

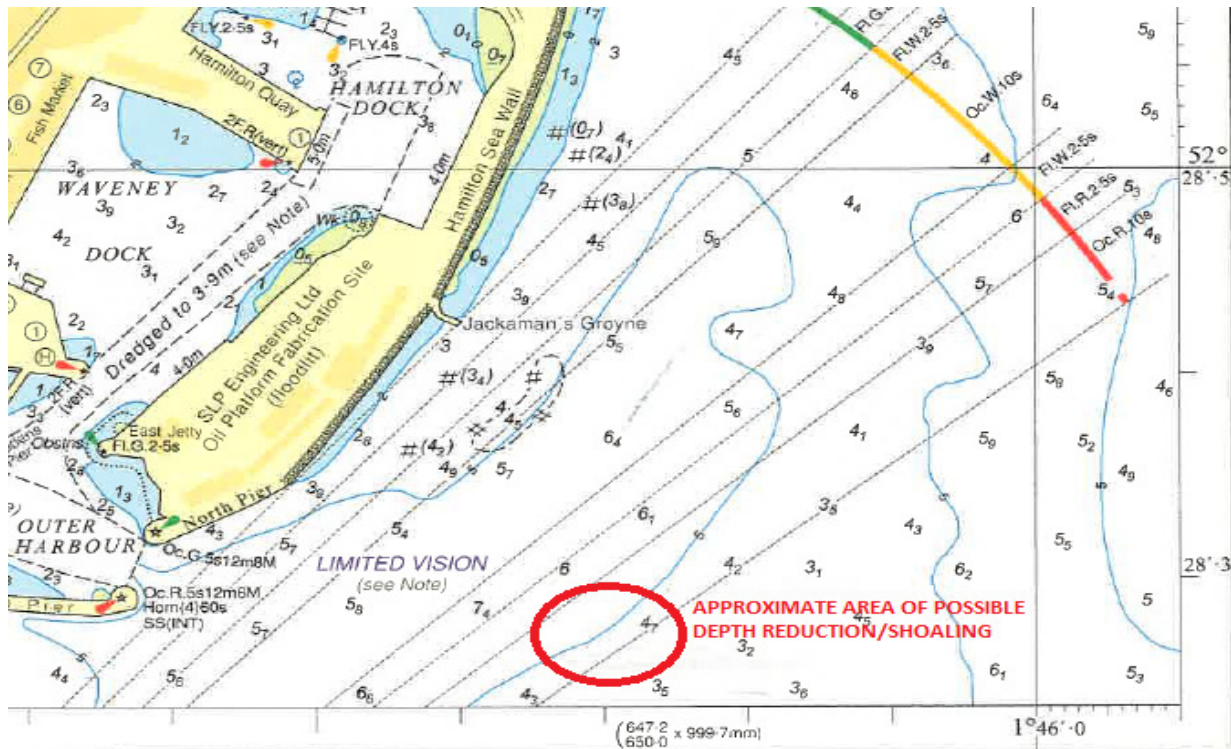


NOTICE TO MARINERS

LOWESTOFT APPROACHES – POSSIBLE SHOALING EAST OF HARBOUR ENTRANCE

Mariners and Port Users are advised of an area of suspected shoaling approx. 350 metres East of Lowestoft Harbour entrance, centred on approx. position 52° 28.260'N, 001° 45.700'E.

This shoaling has yet to be confirmed, but may have resulted in depth reduction of between 0.5m and 1.0m. This area is shown on the chart extract below.



Mariners and Navigators are requested to navigate with caution when in Lowestoft Harbour approaches, using all means available to check and verify vessel position to ensure that the required under keel clearance is available.

The area of concern would appear to be within the occulting red sector of the port entry light. This light is an aid to navigation but should not be solely relied upon for an indication of vessel position.

A survey of this area will be arranged to verify depths. The results of this survey will be promulgated once available.

Please contact Lowestoft Port Control, VHF Ch 14, Tel. 01502 572286, if additional information is required.

Harbour Master

16th January 2019

| |
|---|
| Notices to Mariners Currently in Force: 2006 No.5 2007 No.13 2009 No.19 2011 No.7, No.10, No.19 2012 No.3, 2013 No.17, No.19, 2015 No.24 2016 No.12, 2017 No.5, No.22, No.24, No.32, 2018 No.32, No.34, No.35, No.36, No.37, No.38, 2019 No.01, No.02, No.03 |
|---|