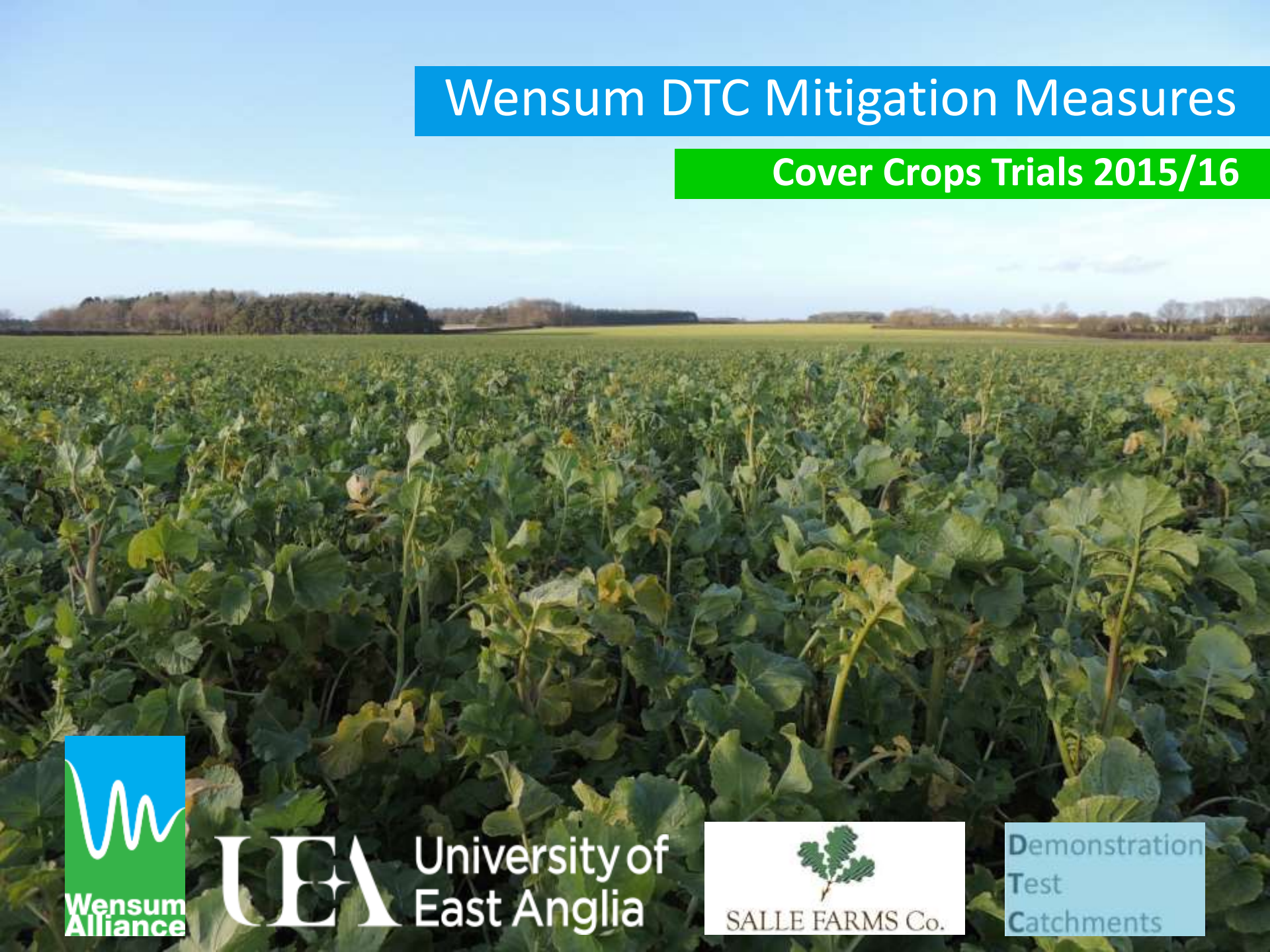


# Wensum DTC Mitigation Measures

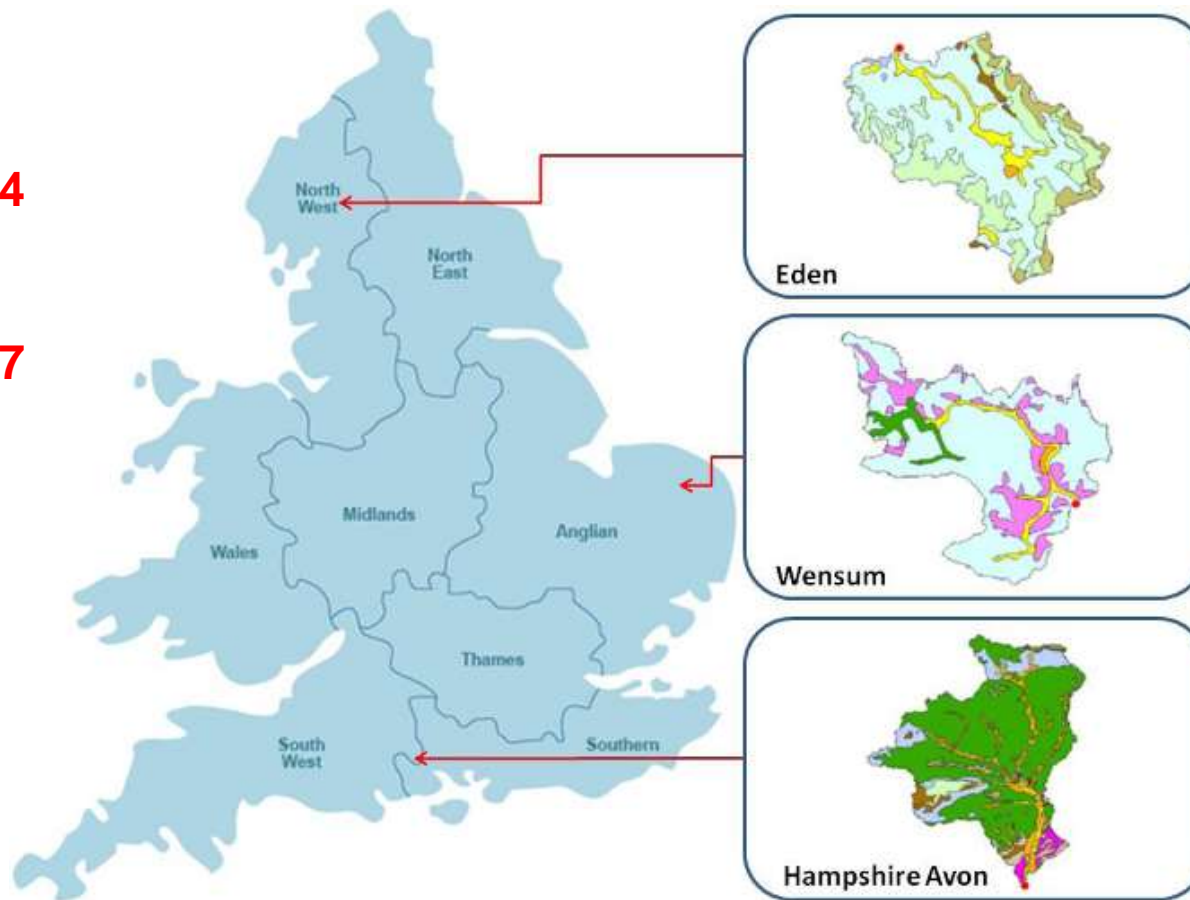
Cover Crops Trials 2015/16



# The Demonstration Test Catchments (DTCs)

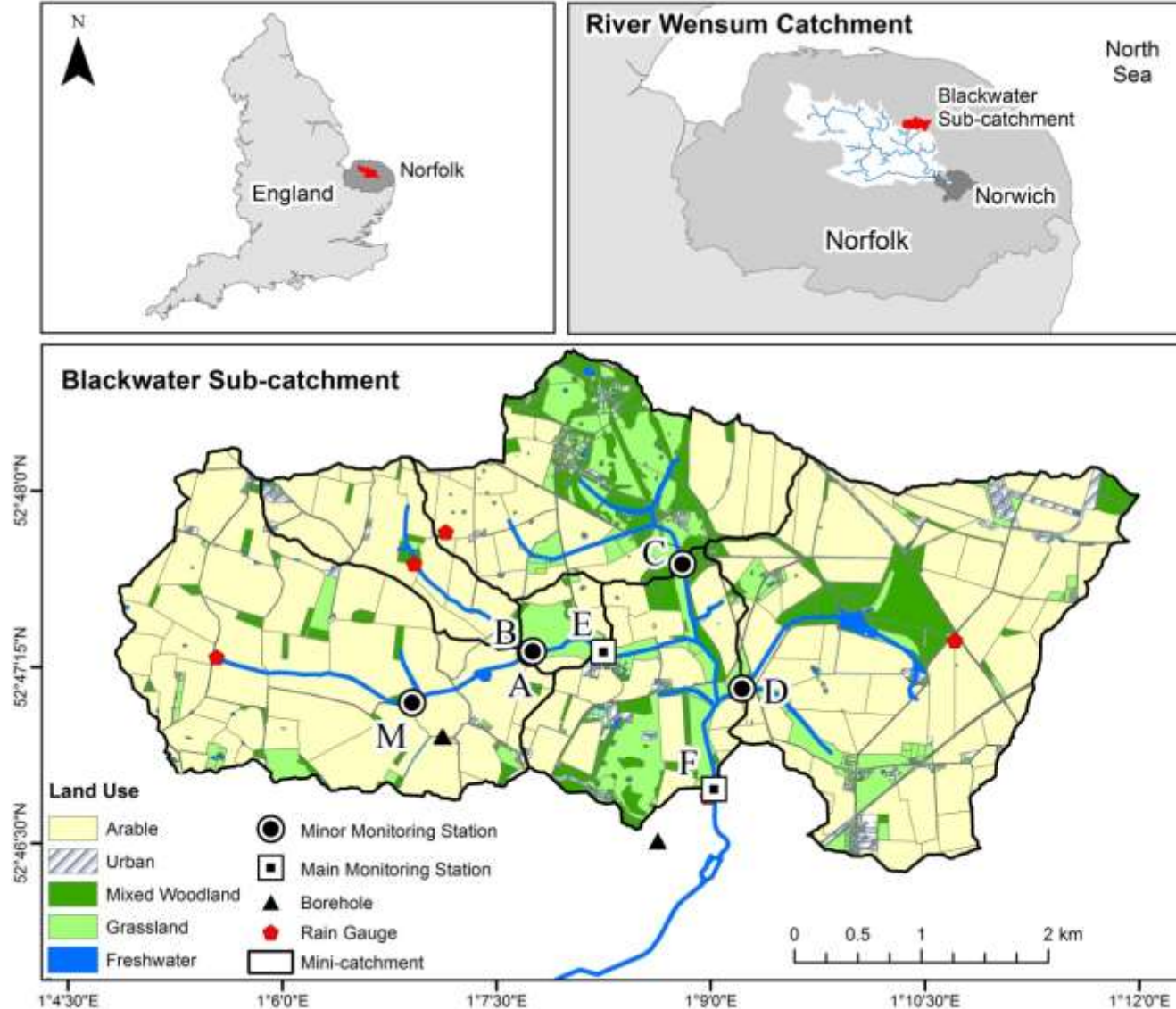
**Phase 1**  
**2010 – 2014**

**Phase 2**  
**2015 – 2017**



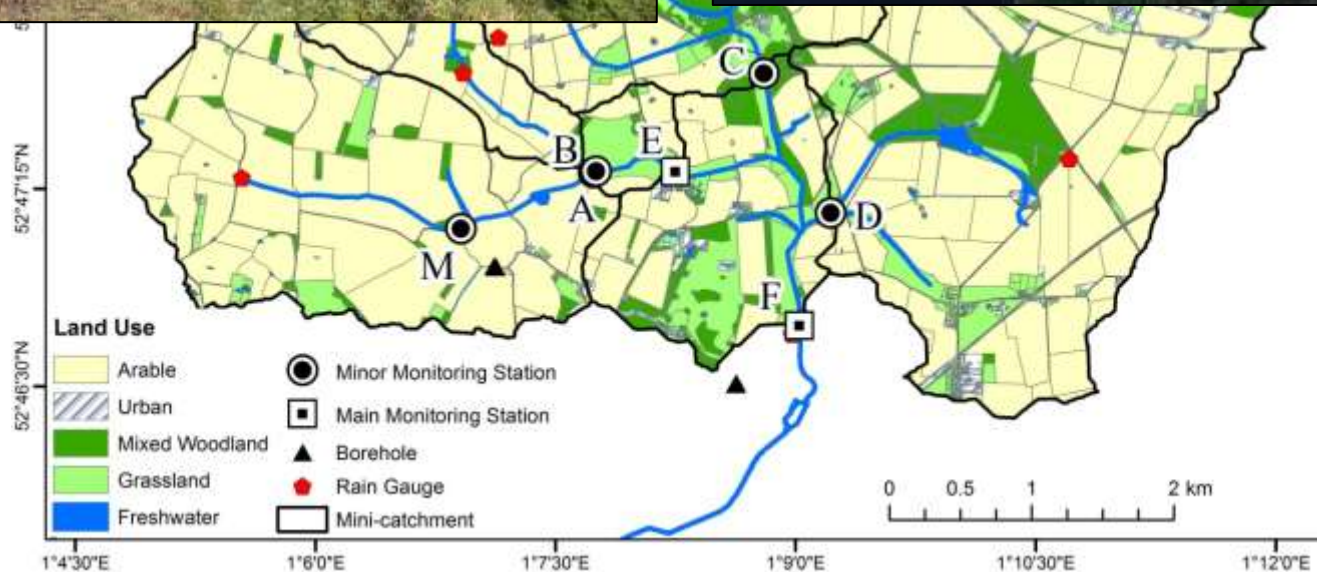
The DTC project aims to evaluate the extent to which on-farm mitigation measures can cost-effectively reduce the impacts of water pollution on river ecology while maintaining food production capacity.

# Blackwater sub-catchment (2,000 ha)

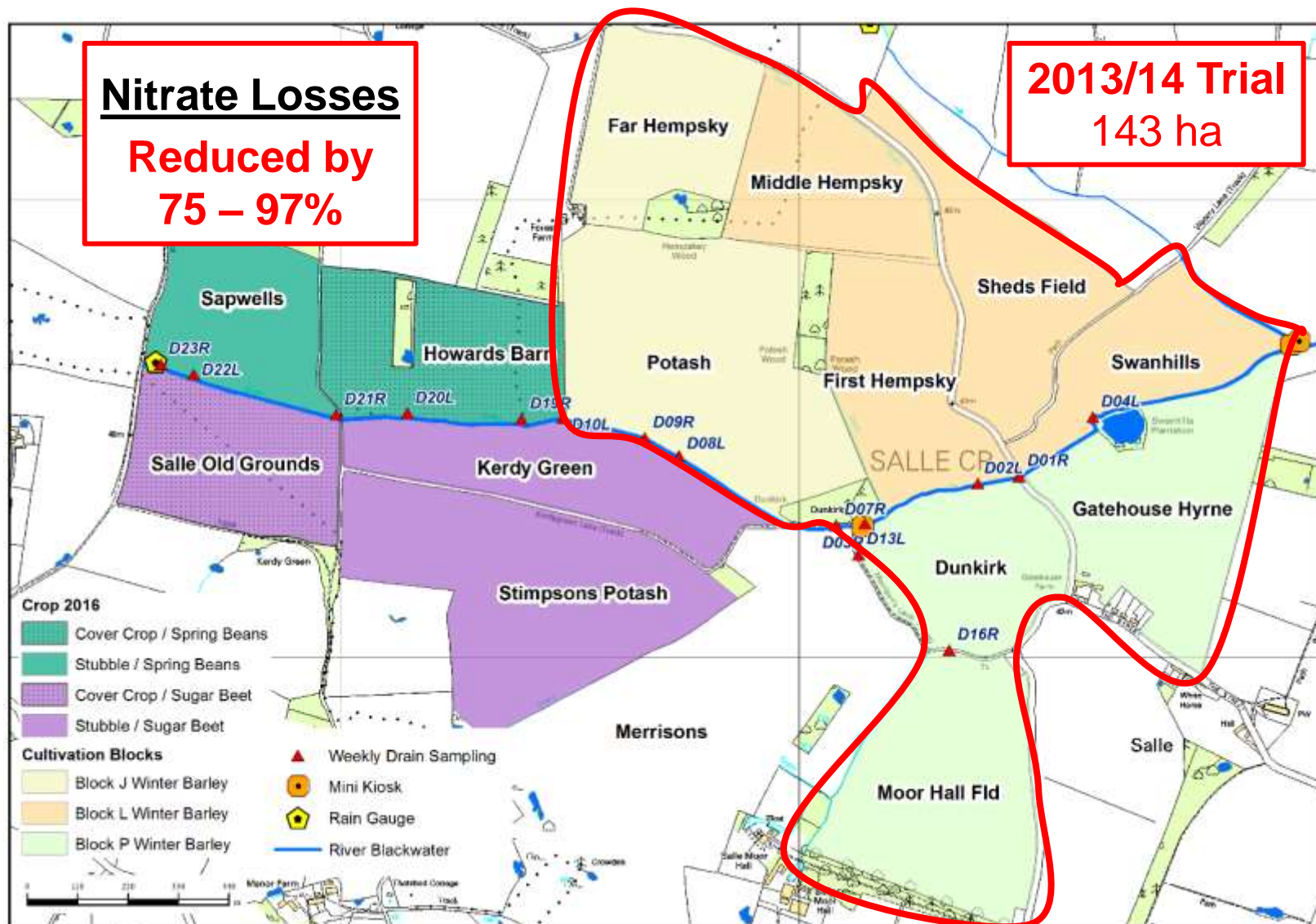




# Blackwater sub-catchment (2,000 ha)

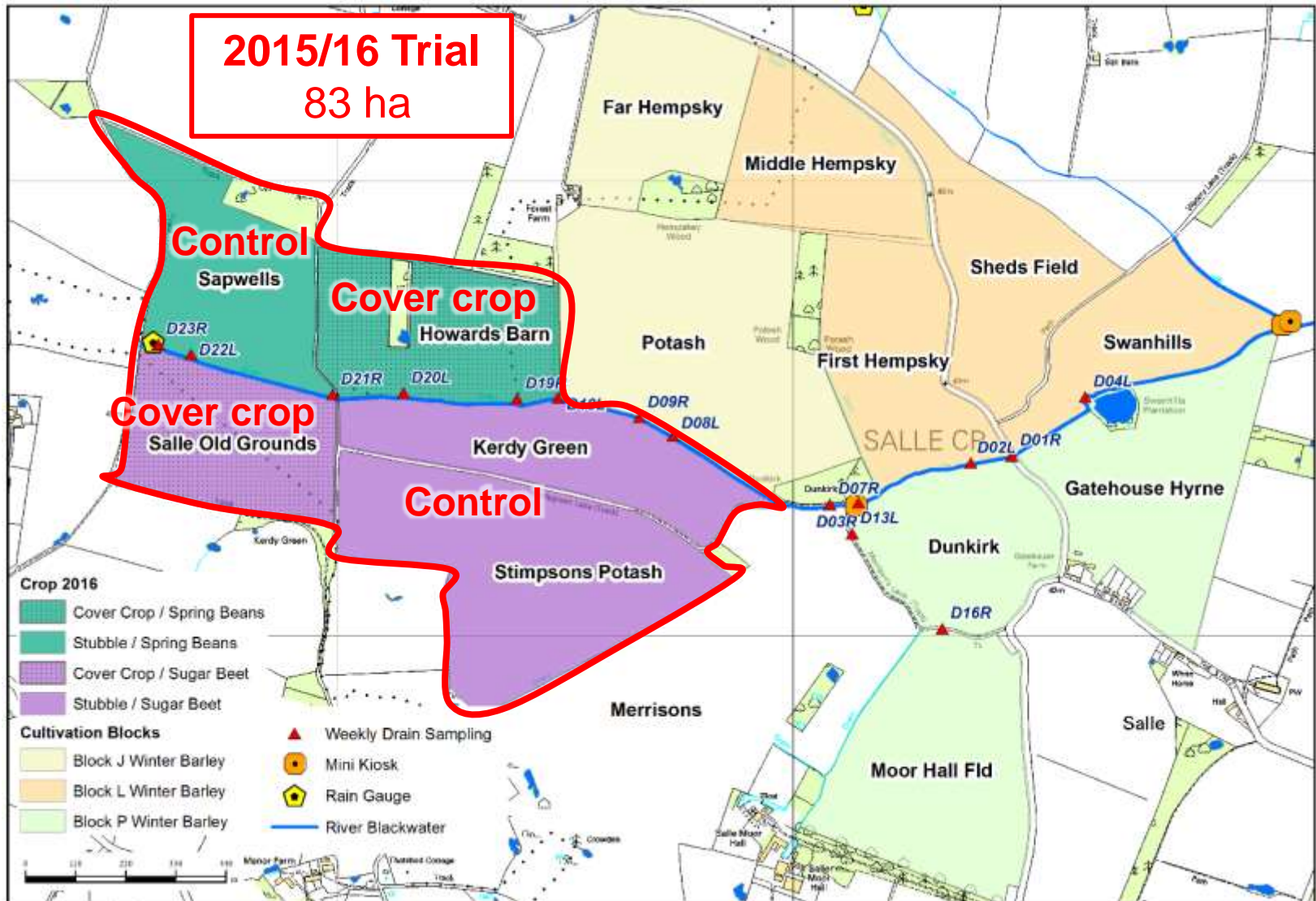


# First Cover Crop Trial





# Second Cover Crop Trial



# Second Cover Crop Trial

Field	Cover Crop	Cash Crop	Harvest
Howards Barn	Oilseed radish (September 2015)	Spring Beans (March 2016)	August 2016
Sapwells	Control - Stubble	Spring Beans (March 2016)	August 2016
Salle Old Grounds	Oilseed radish/rye mix (September 2015)	Sugar Beet (March 2016)	October 2016
Kerdy Green/ Stimpson Potash	Control - Stubble	Sugar Beet (March 2016)	October 2016



# Cover Crop Fields: 3<sup>rd</sup> December 2015

## Salle Old Grounds



Oilseed radish/rye mix (85 seeds/m<sup>2</sup>)



with turkey muck



without turkey muck

## Howards Barn



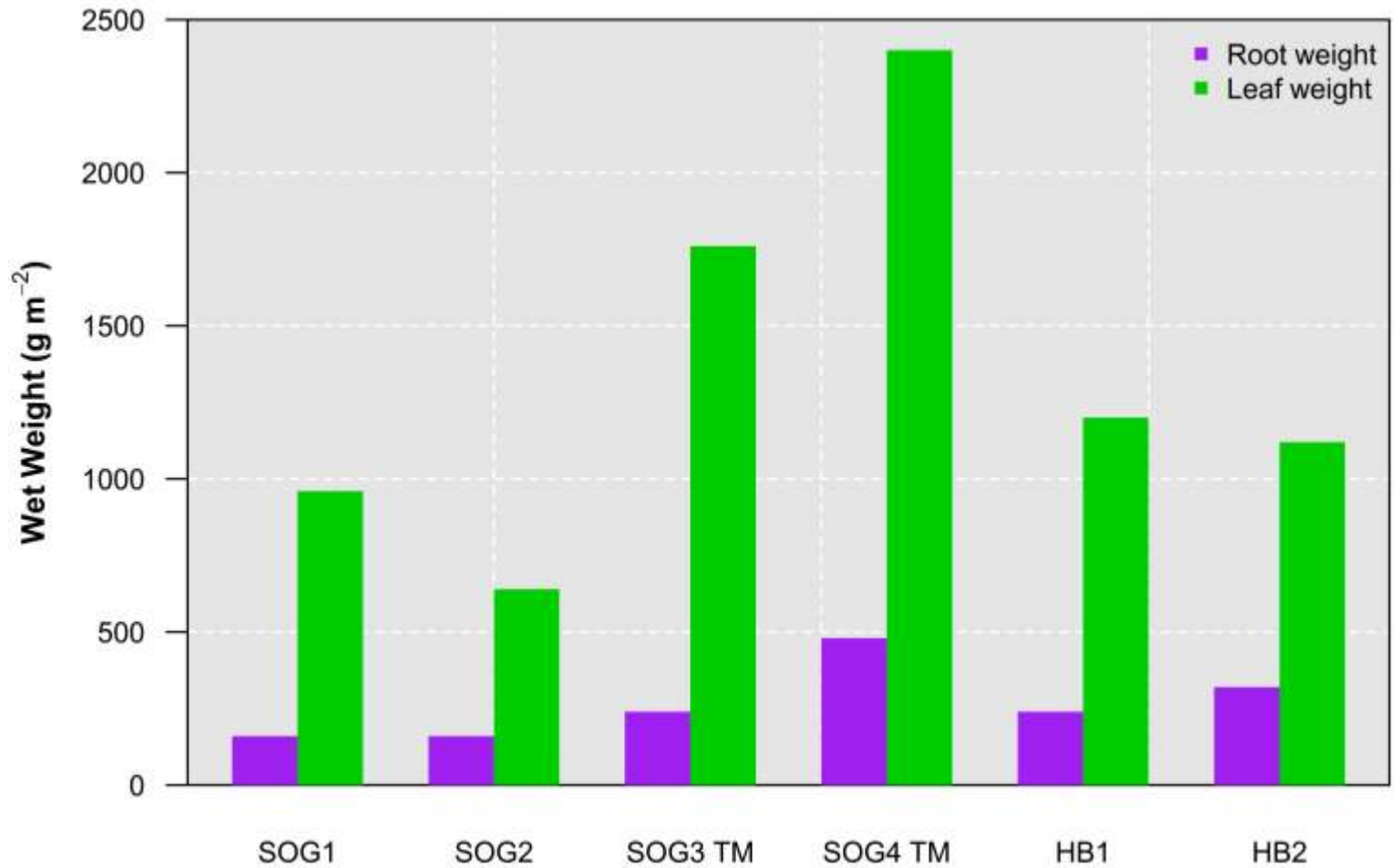
Oilseed radish (165 seeds/m<sup>2</sup>)



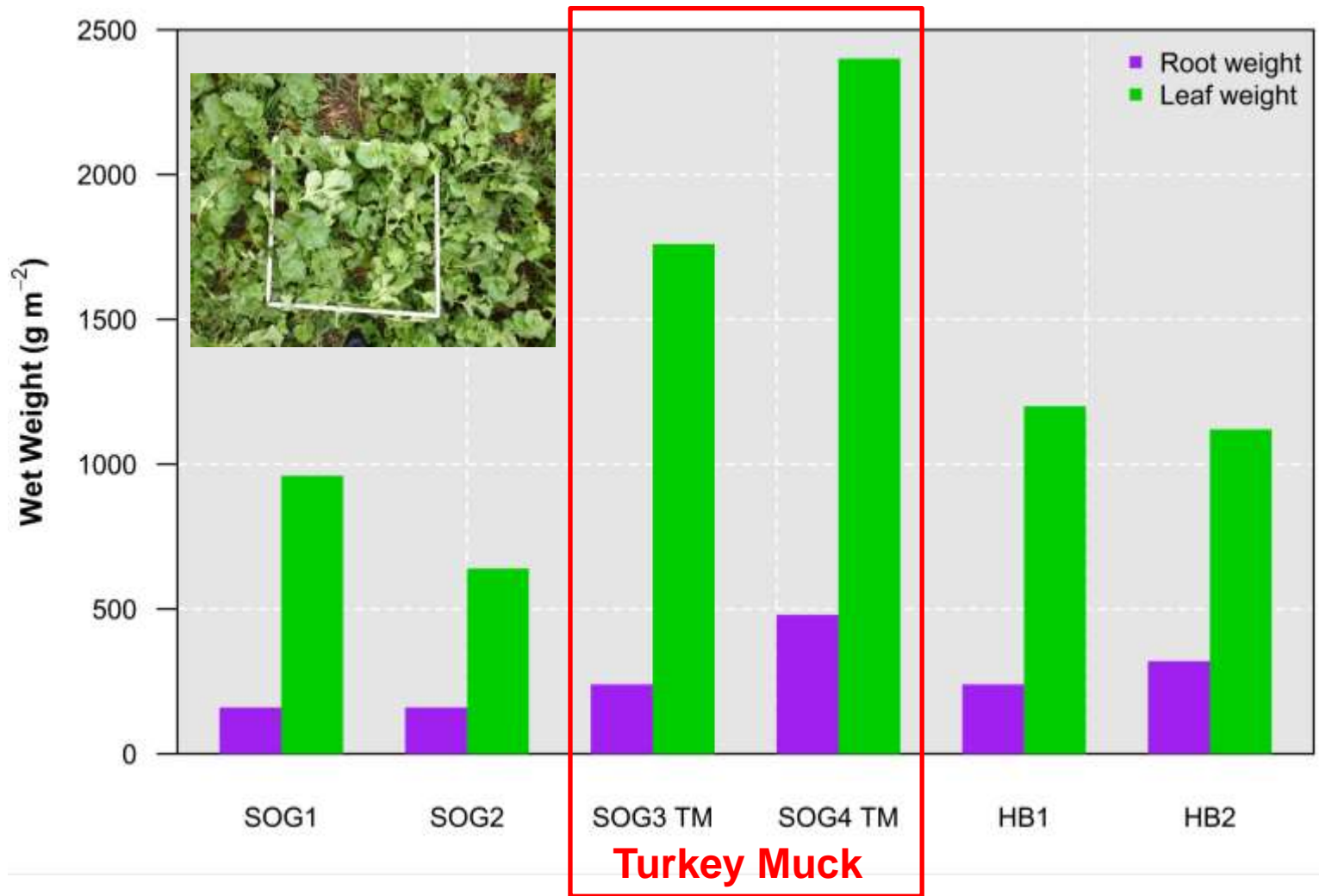
without turkey muck



# Oilseed Radish Biomass: December 2015

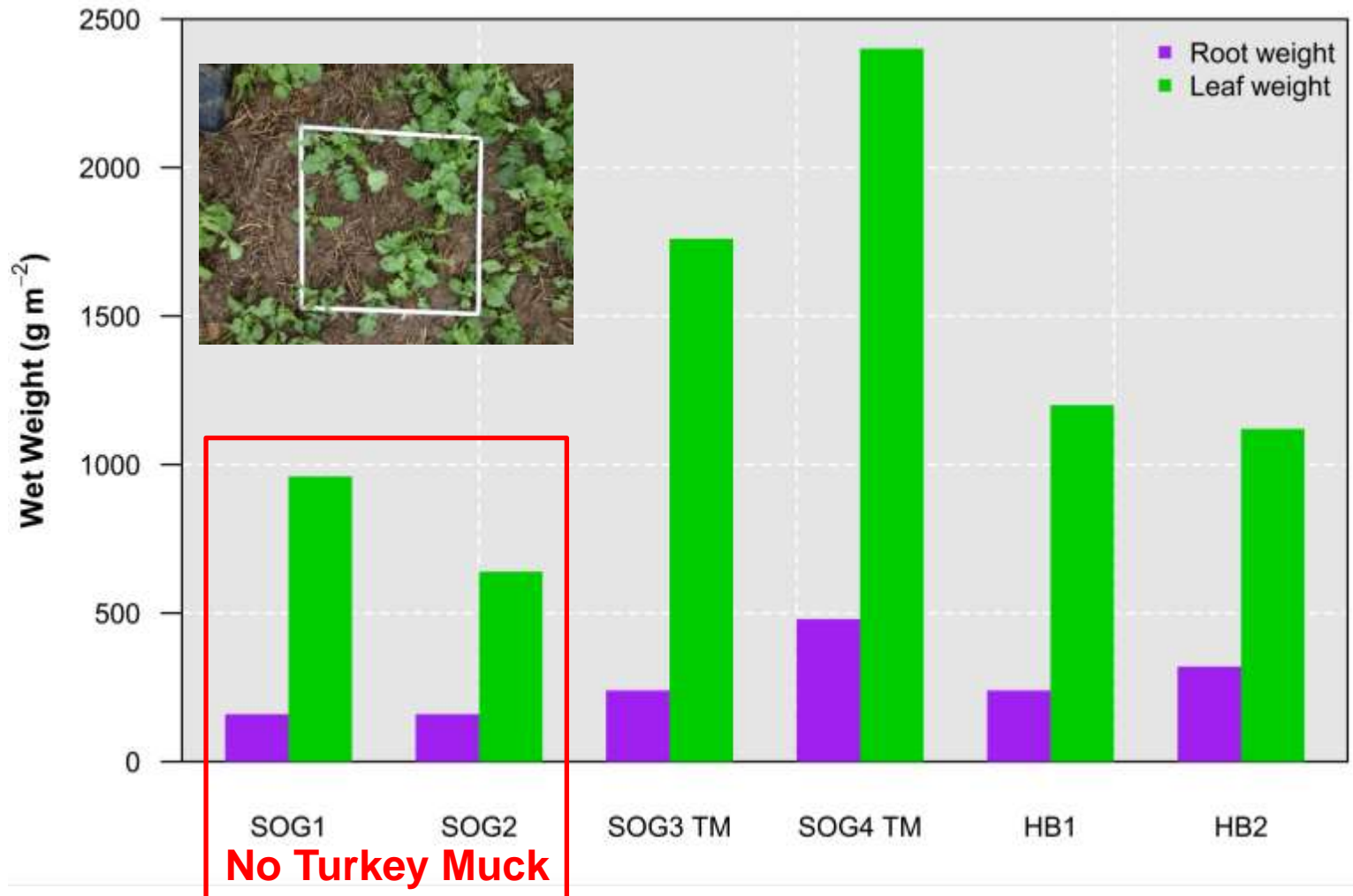


# Oilseed Radish Biomass: December 2015

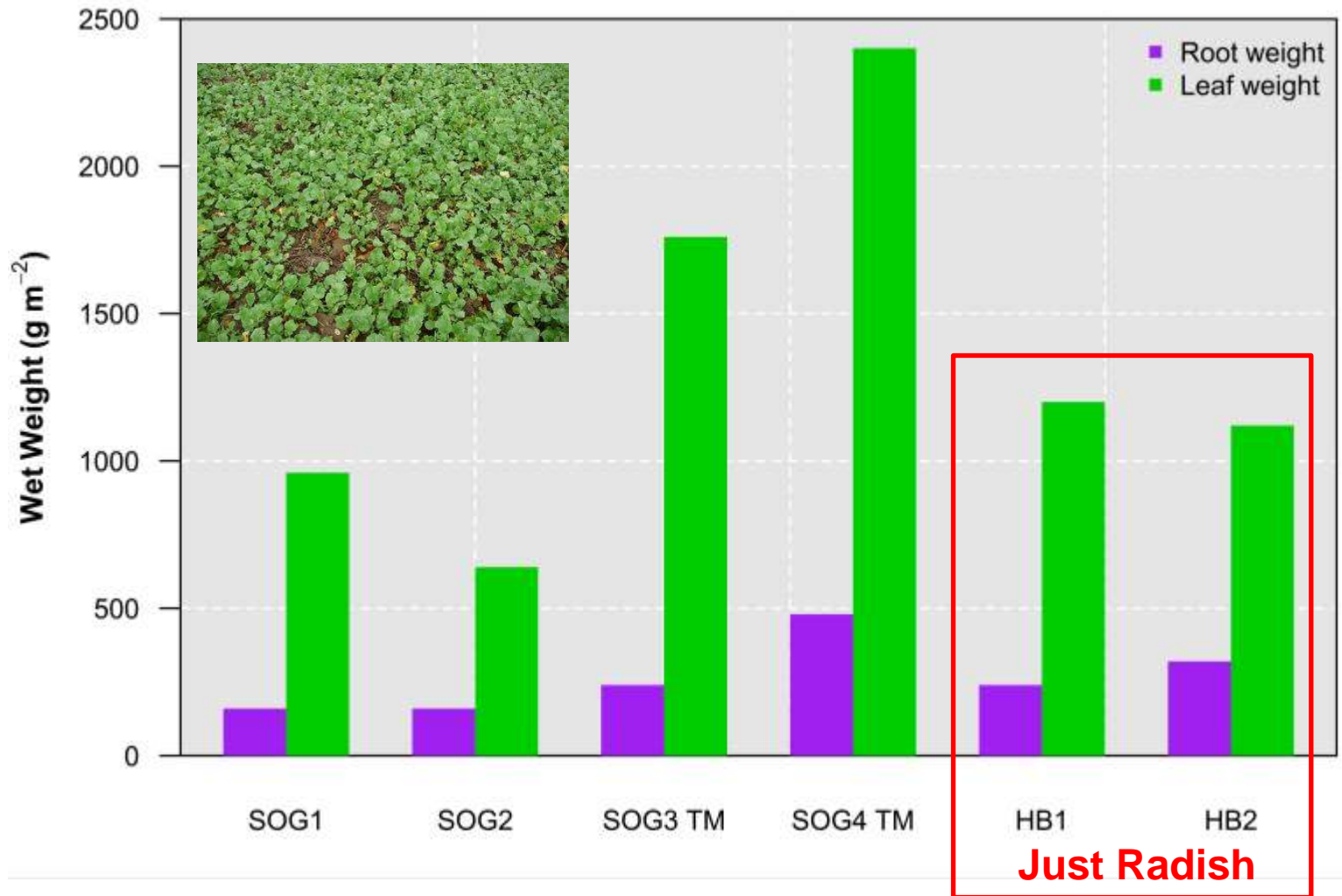




# Oilseed Radish Biomass: December 2015

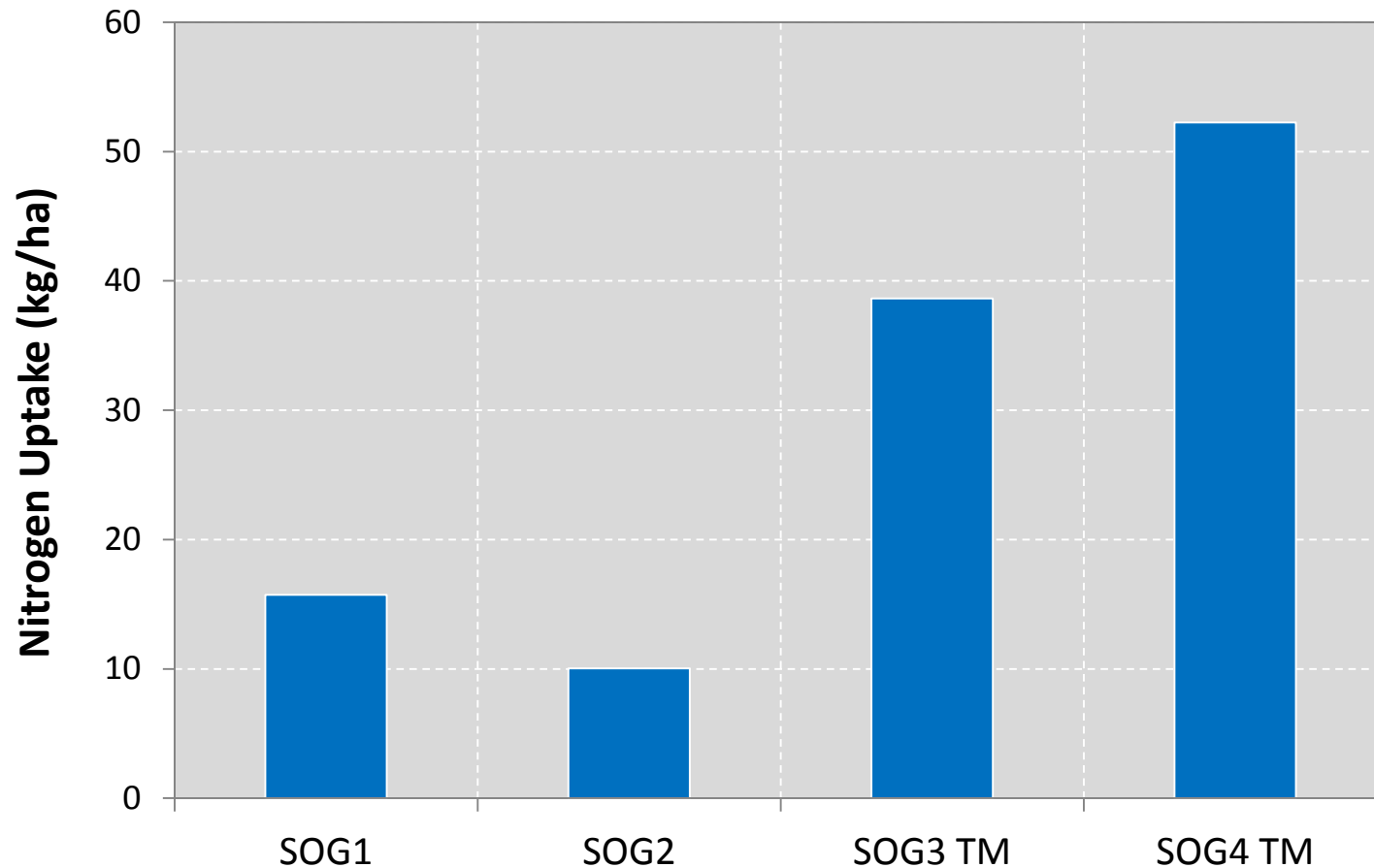


# Oilseed Radish Biomass: December 2015

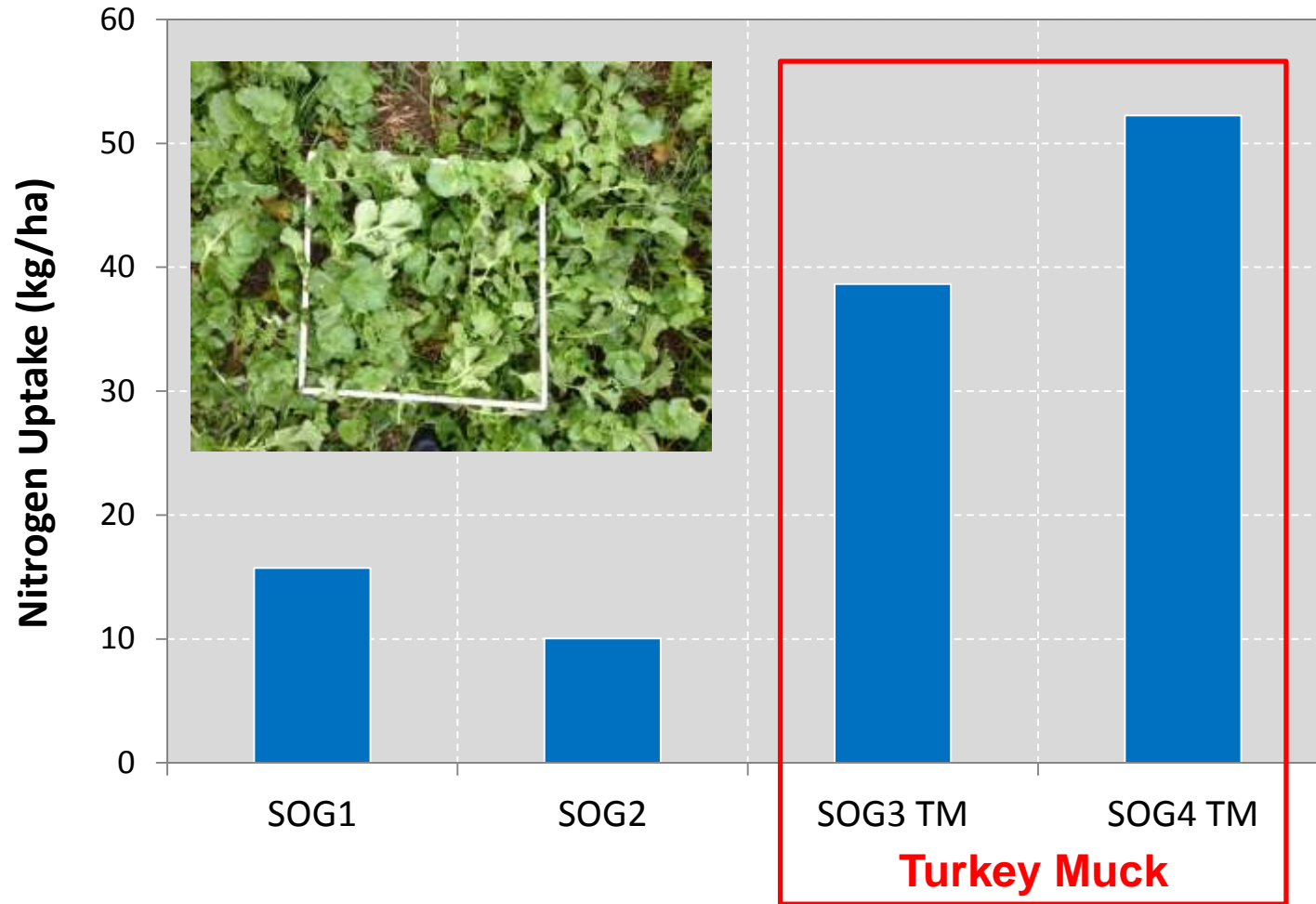




# Oilseed Radish N Uptake: December 2015

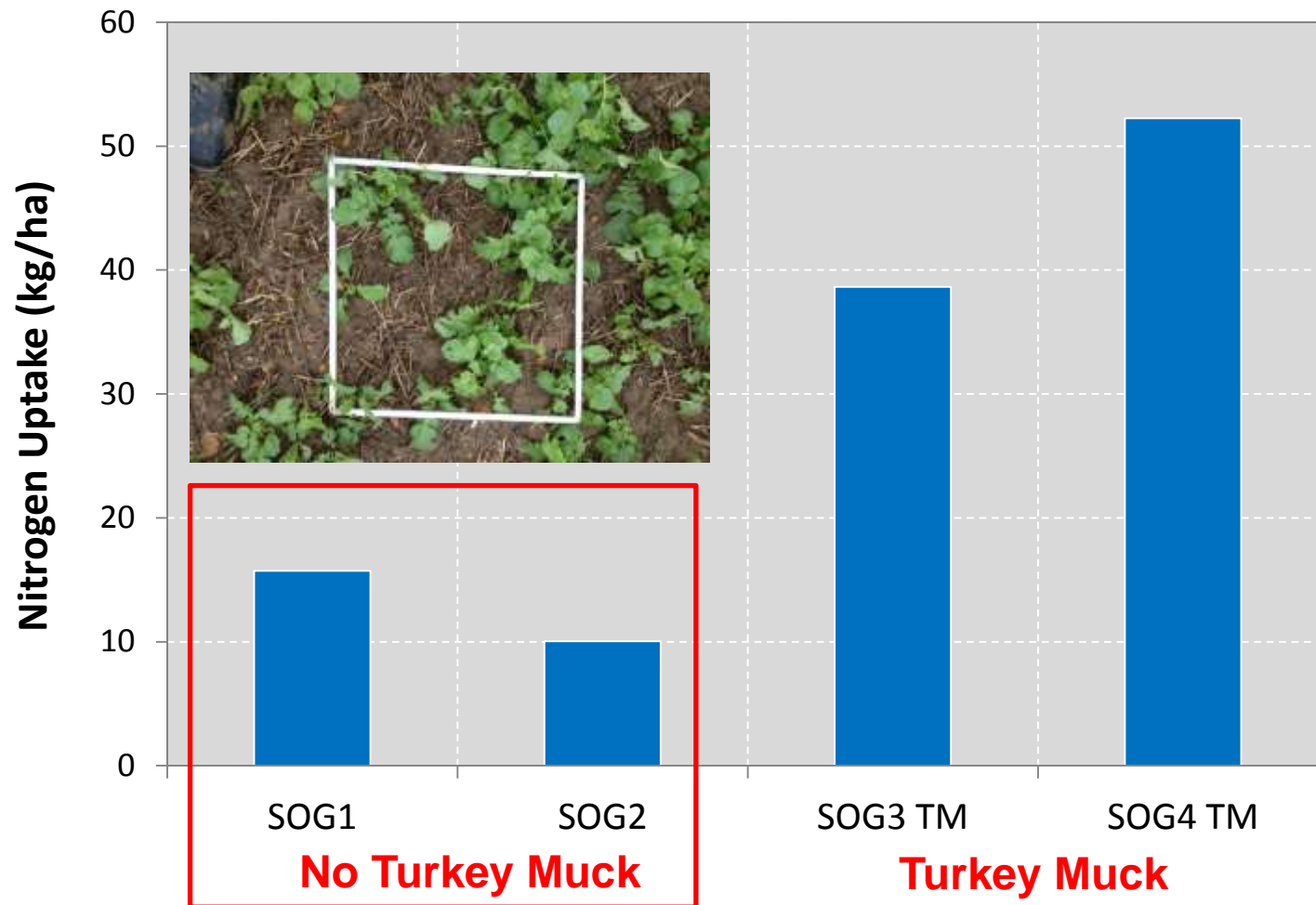


# Oilseed Radish N Uptake: December 2015

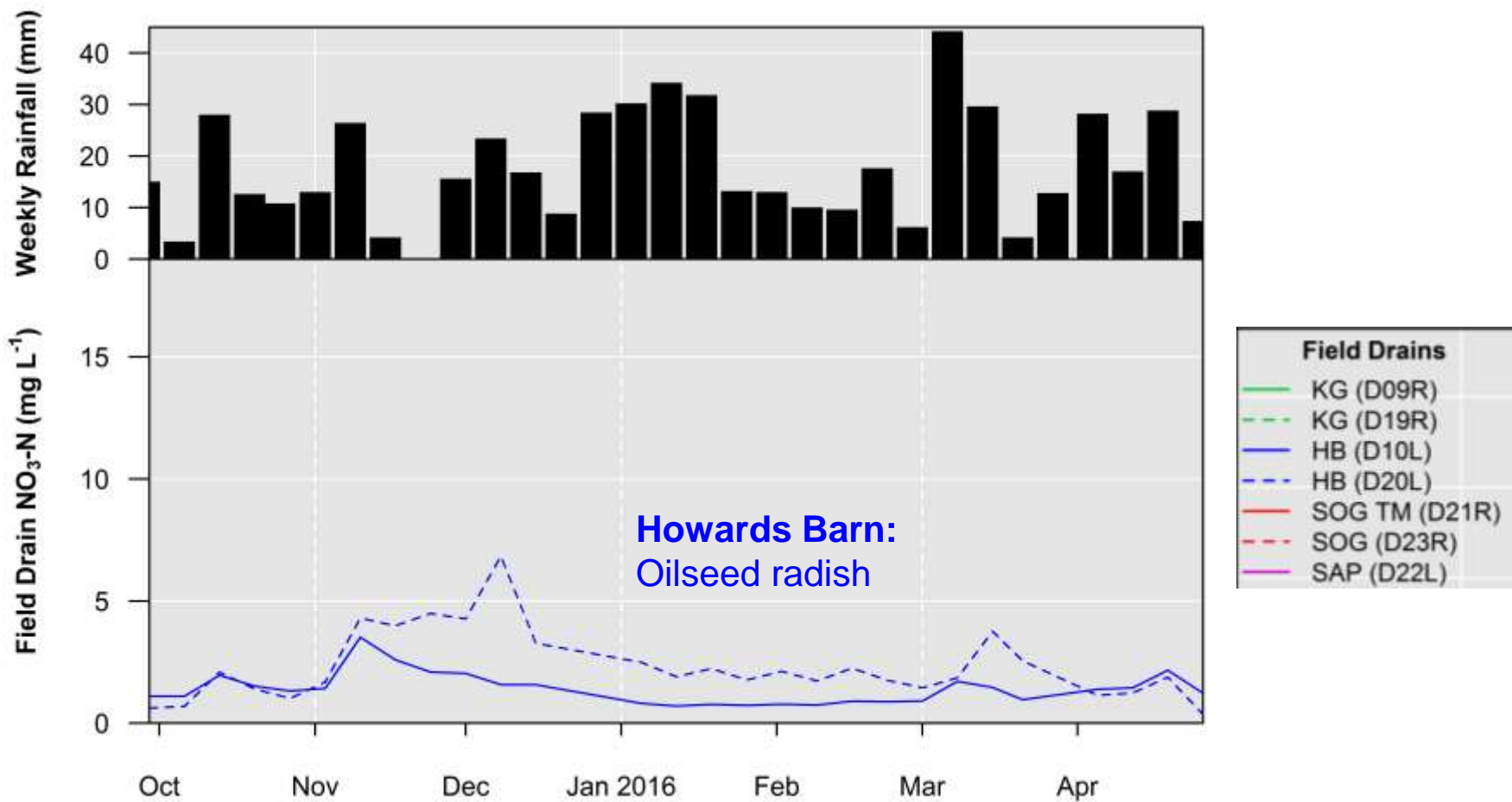




# Oilseed Radish N Uptake: December 2015

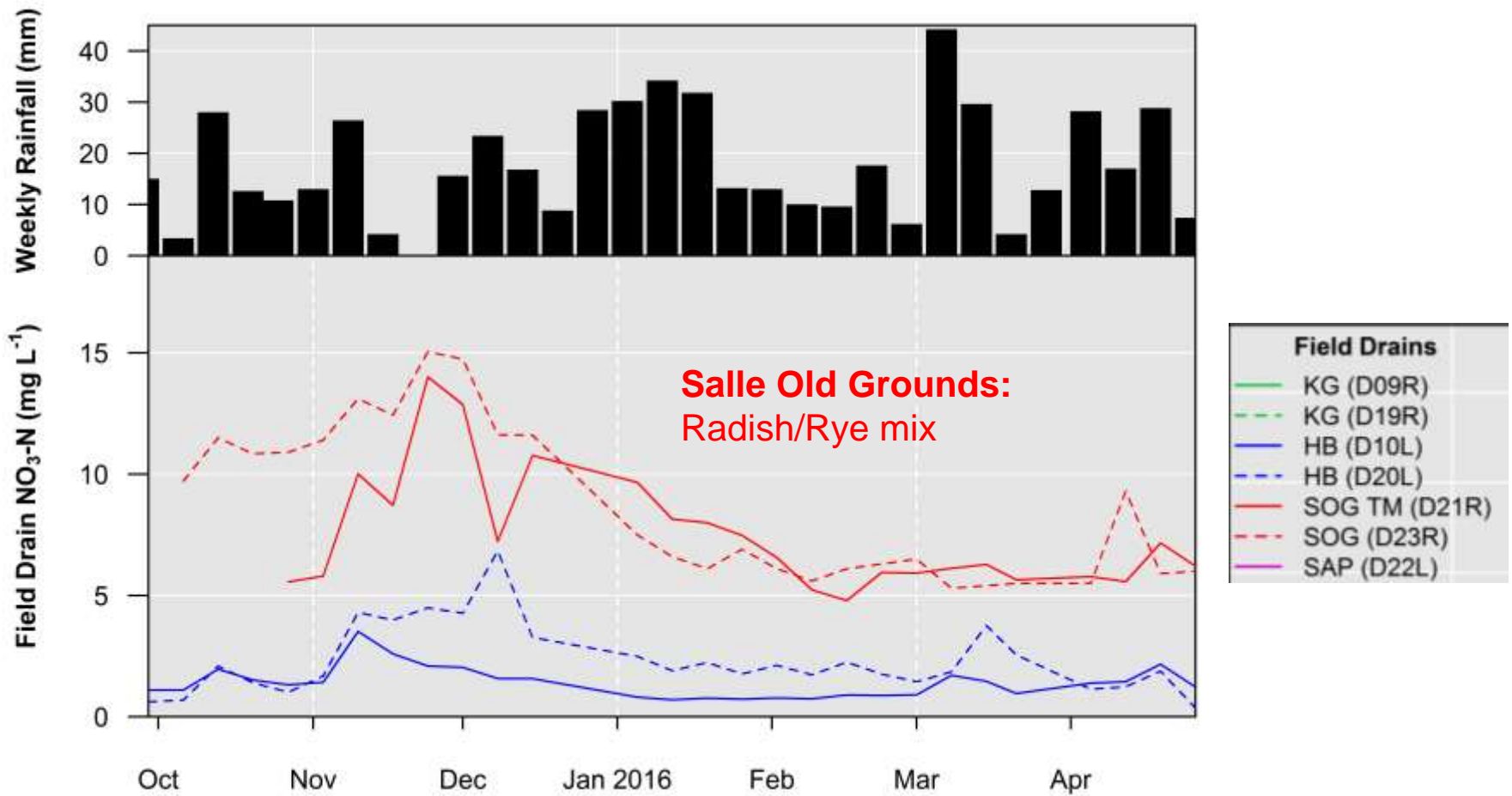


# Field Drain Nitrate Concentrations: Winter 2015/16

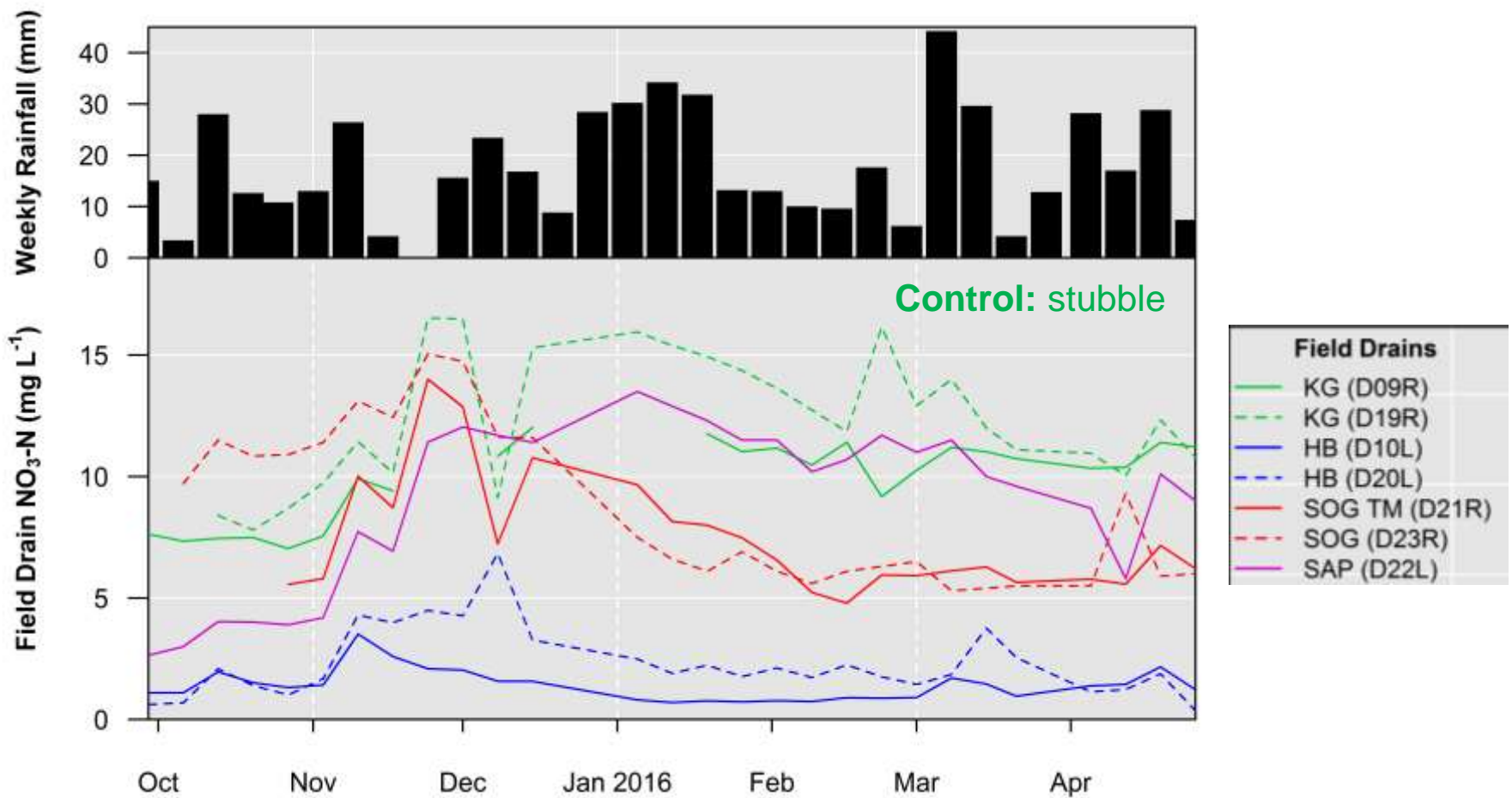




# Field Drain Nitrate Concentrations: Winter 2015/16



# Field Drain Nitrate Concentrations: Winter 2015/16



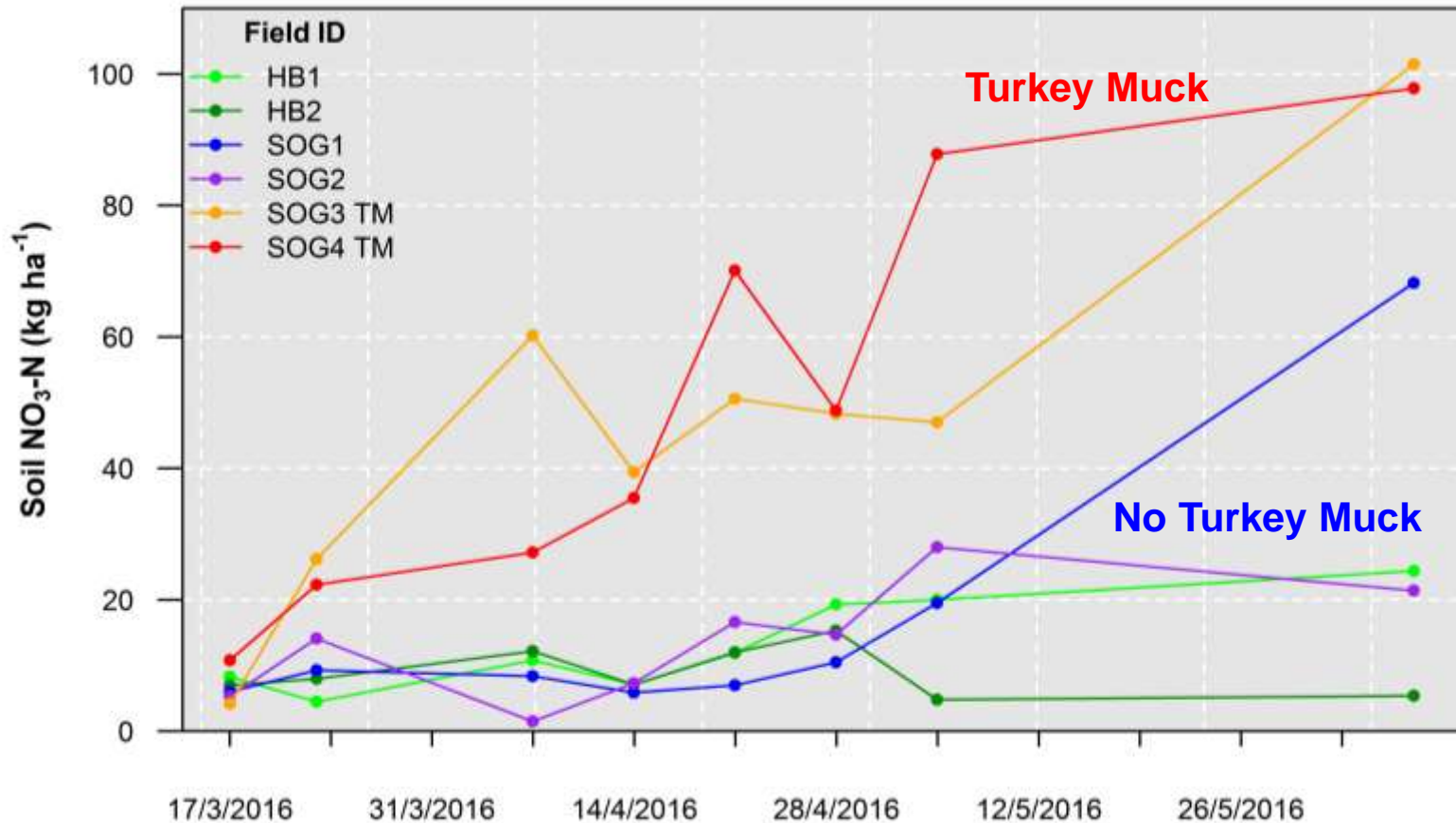
## Field Drain Nitrate Concentrations: Winter 2015/16

	<u>Control</u> Stubble	<u>SOG</u> Radish/rye No TM	<u>SOG</u> Radish/rye With TM	<u>Howards Barn</u> Radish
Nitrate (mg N/L)	10.4	8.6	7.4	1.9
Change (%)	-	- 17%	-29%	-82%





# Soil Nitrate Concentrations: Spring 2016



# Worm Counting: April & September 2016

