



Rob Holland
Catchment Advisor

LOVE EVERY DROP. PUT WATER AT THE HEART
OF A WHOLE NEW WAY OF LIVING.

healthy crops, healthy water



What does it mean?

Top quality food and water produced in an economically and environmentally positive way.

Catchment Management

- Pesticides and Nutrients
- Surface and Ground water
- Land, Arable, Livestock
- Amenity – Golf, Equestrian, Gardens, Allotments
- Biodiversity and Flow

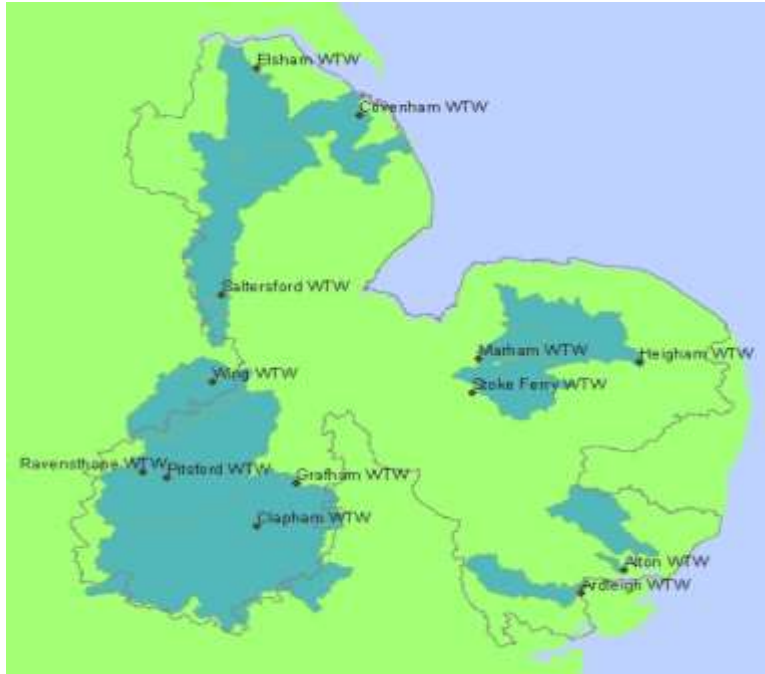


Drinking water standards



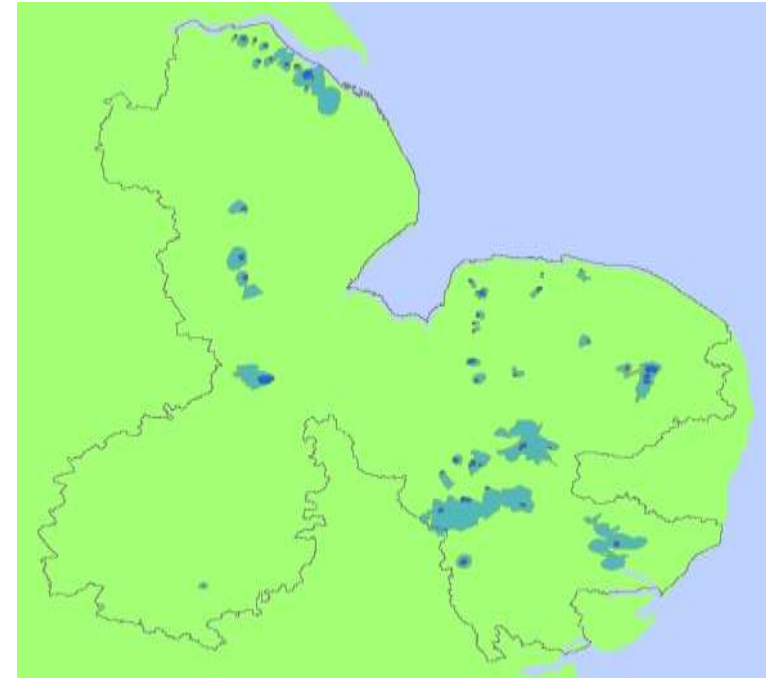
- All water companies must supply water to defined drinking water standards
 - For example:
 - Individual pesticide: 0.1 ug/l
 - Total pesticides: 0.5 ug/l
 - Nitrate: 50 mg/l (as NO₃)
- If any of the standards are exceeded, the DWI requires solutions to be implemented
- Formal enforcement to secure compliance with regulations (Undertakings)

Surface water and high risk groundwater catchments



Approx. 9,000 km²

- Direct river abstraction to treatment works
- Pump from a river to impounding reservoir
- Natural gravity flow to reservoir



Approx. 1,000 km²

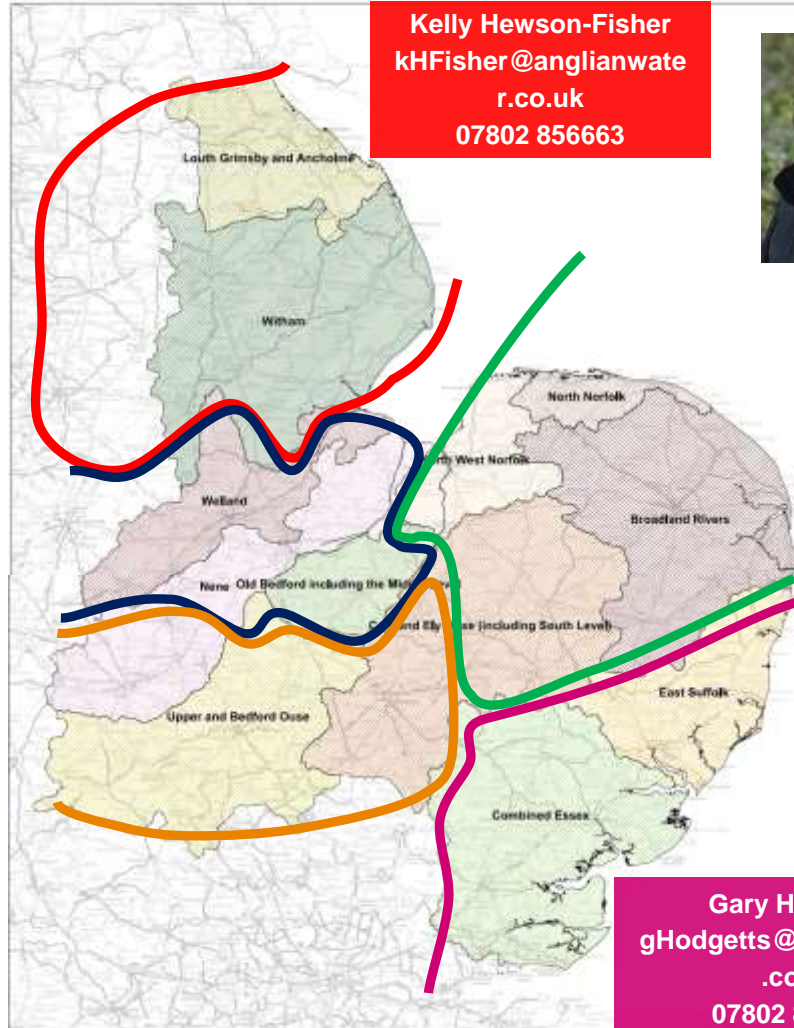
- Variety of aquifers
- Differing vulnerabilities
- 226 Sources
- 500 + Boreholes
- 50% of Total Supply

CATCHMENT ADVISORY TEAM



Joanne Pollock
jPollock@anglianwater.co.uk
07802 856662

Tom Edmondson
tEdmondson2@anglianwater.co.uk
07764 986927



Kelly Hewson-Fisher
kHFisher@anglianwater.co.uk
07802 856663



Rob Holland
rHolland2@anglianwater.co.uk
07802 856872



Gary Hodgetts
gHodgetts@anglianwater.co.uk
07802 856632



Fiona Wood (nutrients)
fWood@anglianwater.co.uk
07764 164874



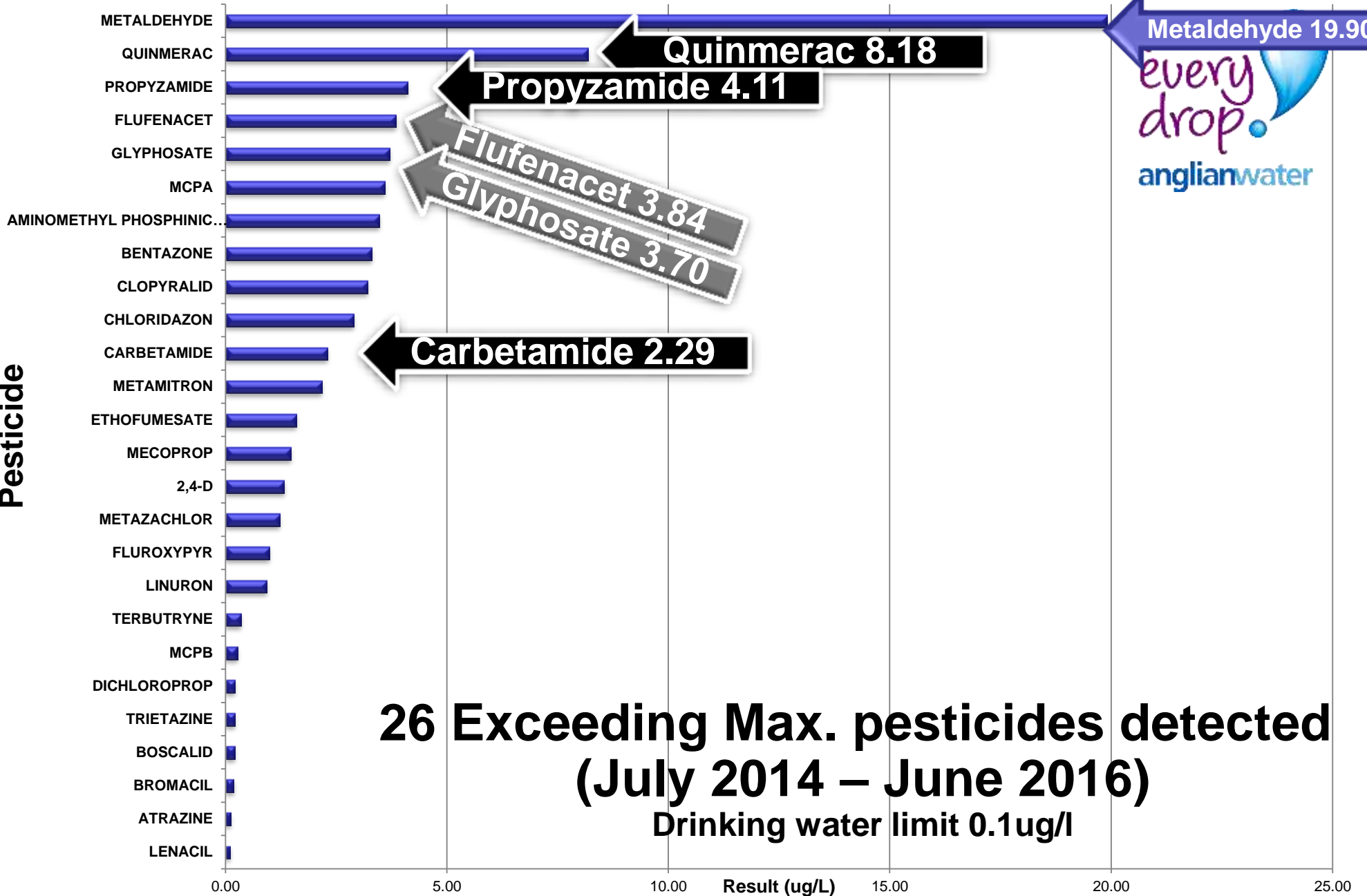
Also another 3 colleagues covering 48 Bathing Waters

Surface Water



- Issues
- Pesticides
- Nutrients – Nitrate + Phosphate (WFD)
- Sediments – (Turbidity)
- Bacteria

Pesticide



Metaldehyde 19.90

Quinmerac 8.18

Propyzamide 4.11

Flufenacet 3.84

Glyphosate 3.70

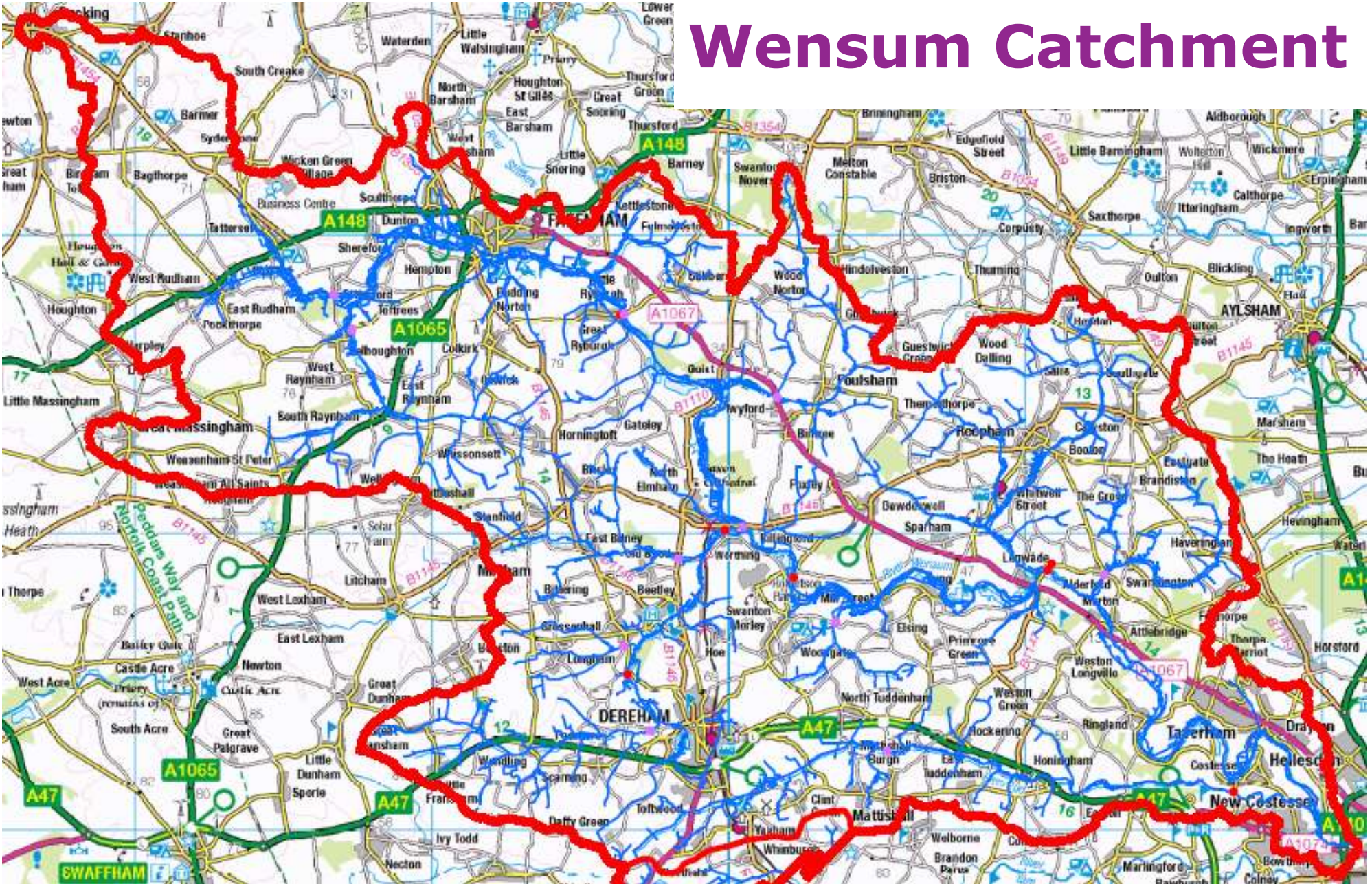
Carbetamide 2.29



**26 Exceeding Max. pesticides detected
(July 2014 – June 2016)**

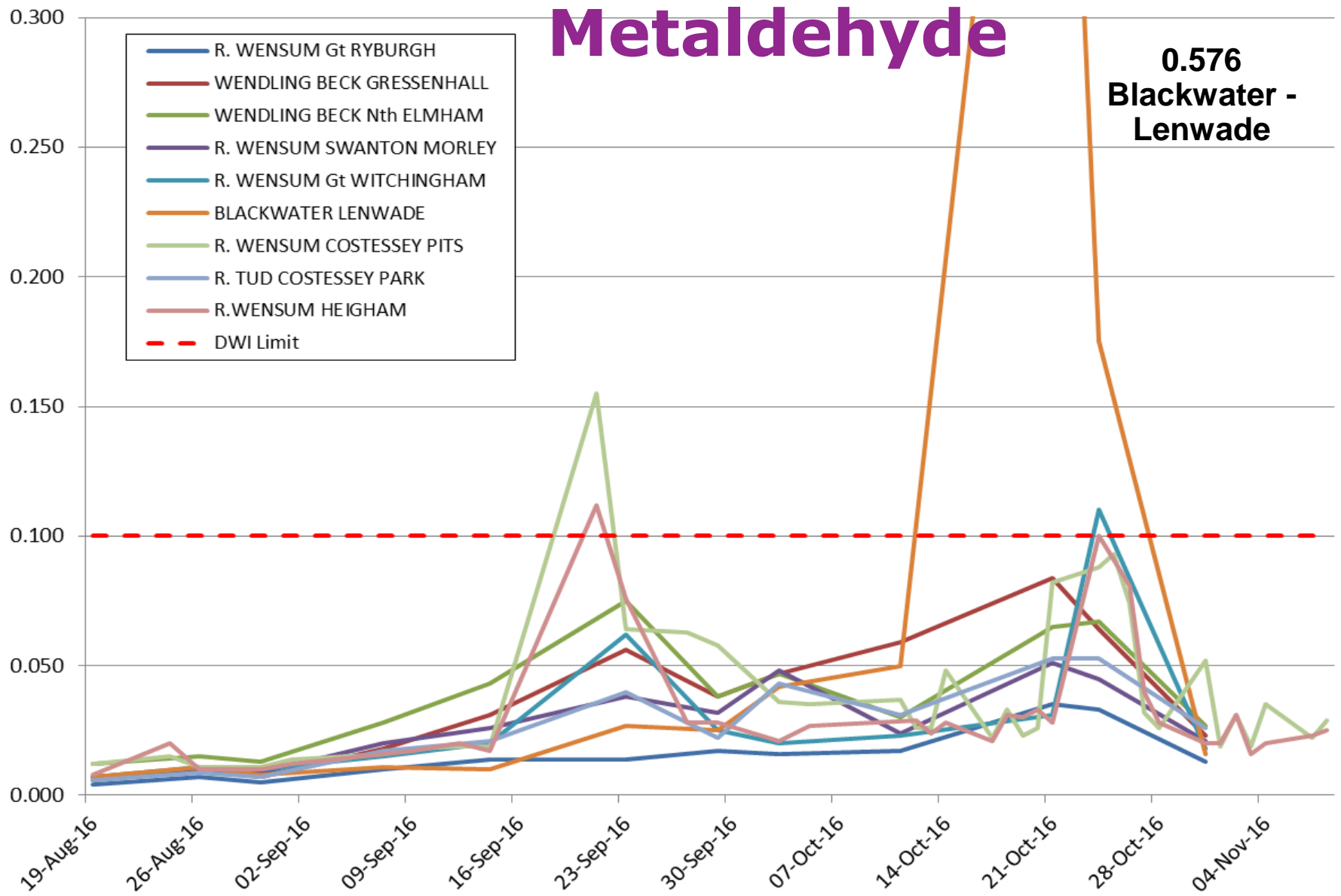
Drinking water limit 0.1ug/l

Wensum Catchment



Metaldehyde

0.576
Blackwater -
Lenwade



What do we want to do



- Work to
- Better communications with farmers
- Better communications with Agronomists
- Support sustainable agronomy
- Understand details of catchments – Cropping, flow, connectivity, urban influence.
- Prolong the availability of pesticide range.

PESTICIDE AMNESTY

FREE PESTICIDE DISPOSAL

Anglian Water is working with farmers to protect the quality of our rivers and reservoirs.

There is always a risk of water contamination from certain types of stored pesticides. Anglian Water are sponsoring an amnesty to give local farmers the opportunity to safely dispose of old, unwanted pesticides discretely, without charge and with no questions asked.

*Terms and conditions apply, see reverse for details

NEW



FREE*
Legal, safe and confidential disposal of unwanted/expired chemicals & pesticides



HOW TO APPLY

- Check if you are in the selected catchment area around the Blackwater. To check, contact Anglian Water Catchment Advisor, Rob Holland on **07802 856872** or Chemclear stating the Anglian Water Blackwater Pesticide Amnesty.
- Check your pesticide stores for eligible unwanted/unused/expired pesticides and chemicals, see pesticides.gov.uk

CATCHMENT AREA



TO ARRANGE COLLECTION

You have until the **31st January 2017** to apply for collection. Collections will be made by arrangement with the applicant during February 2017.

CONTACT

David Brown, ChemClear Ltd

call: **07436 077304**

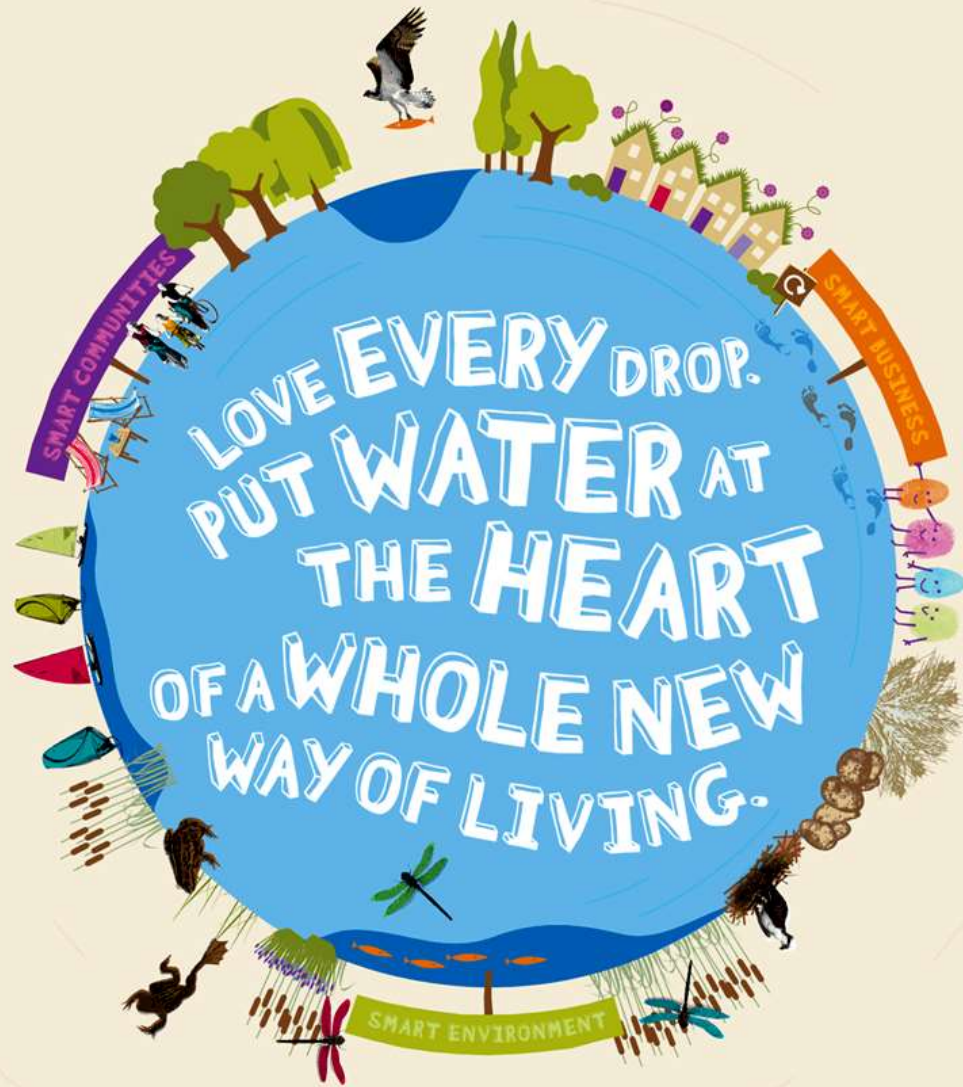
email: info@chemclearltd.co.uk

Details of collections will remain confidential between the applicant and ChemClear Ltd

*TERMS AND CONDITIONS

Your business premises must fall within the relevant catchments. The offer is limited to the date specified and made on a first come first served basis. Anglian Water reserves the right to close the offer early should the allocated funding be reached before the application deadline. It is only open to farmers, growers, gamekeepers and pest controllers (the applicant) who own the eligible pesticide/biocides (the waste). It is not open to other commercial businesses e.g. those engaged in waste disposal services. Any waste which is collected and is then found not to be covered by this scheme or which requires analysis or other investigation will be disposed of by ChemClear Ltd at the applicant's expense.

**ACT
NOW!**



love
every
drop.



anglianwater