

Acle Neighbourhood Plan

Sustainability Appraisal

2014

Non-technical summary

This document comprises an appraisal of the environmental, social and economic impacts that could result from the policies contained within the draft Acle Neighbourhood Plan.

This 'Sustainability Appraisal' report has been subjected to community and statutory consultation prior to submission to Broadland District Council and the Broads Authority. All parties were broadly happy with the content and conclusions of the report and where minor amendments were suggested these have been taken into account.

The need to undertake a Sustainability Appraisal was agreed with Broadland District Council and the Broads Authority through a process of 'screening'. Following that, an Sustainability Appraisal Scoping Report was produced to, amongst other things, identify baseline environmental, social and economic conditions in Acle and set out an appraisal framework. This Scoping Report was subjected to a process of formal consultation. All consultees were broadly happy with the content of the Scoping Report and where minor amendments were suggested they were taken into account.

The Sustainability Appraisal set out in this report appraises each of the draft Neighbourhood Plan policies in turn against a large number of environmental, social and economic criteria.

In total the policies are estimated to have no significant negative effects, 4 negative effects, 1 neutral effect, 69 positive effects and 11 significant positive effects. Where policies (1 and 9) are estimated to have a potentially negative effect, in each case the negative effects are considered to be outweighed by the positive effects. In both instances mitigation measures are suggested that would be delivered through the development control process.

Overall, the policies contained within the draft Neighbourhood Plan are likely to have a positive or significant positive effect on the environment, community and economy of Acle over the short-, medium-, and long-term. Taken as a whole the draft Acle Neighbourhood Plan is therefore likely to have a positive effect if adopted.

Contents

- 1 Introduction and methodology
- 2 Appraisal of draft Neighbourhood Plan objectives
- 3 Appraisal of draft Neighbourhood Plan policies
- 4 Conclusions and next steps

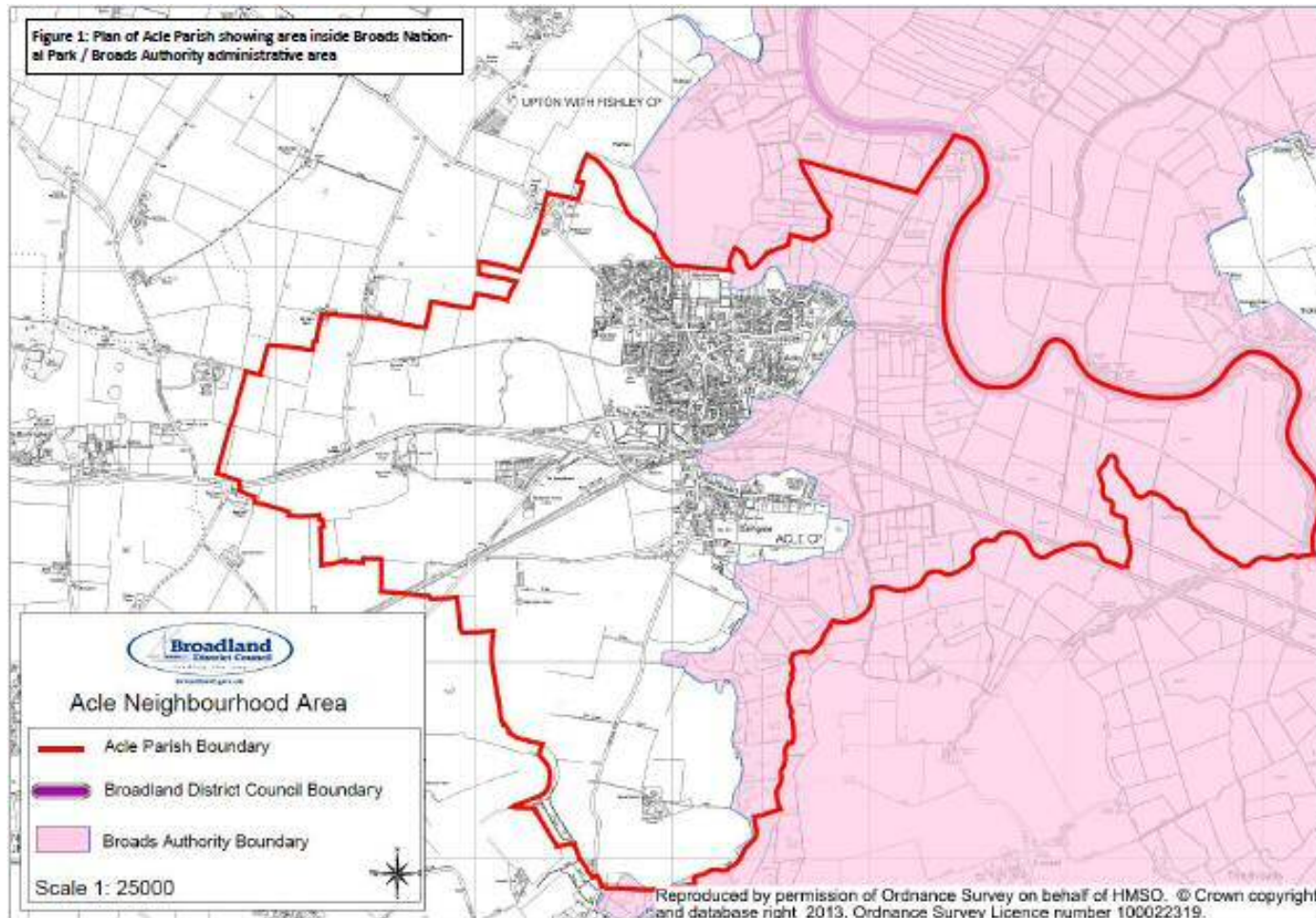
1. Introduction and methodology

- 1.1. This report comprises a Sustainability Appraisal (SA) of the Acle Neighbourhood Plan. It has been developed to test and inform the content of the Plan as required by the EU Directive 2001/42/EC, which is also known as the Strategic Environmental Assessment (SEA) Directive.
- 1.2. Although the SEA Directive only requires Neighbourhood Plans to undertake a Strategic Environmental Assessment (SEA), in order to ensure best practice this report reviews social and economic issues and therefore comprises a broader Sustainability Appraisal.
- 1.3. By undertaking an SA rather than an SEA, the Acle Neighbourhood Plan Working Group (see below) is ensuring that policies are tested against social and economic appraisal criteria as well as environmental criteria.
- 1.4. This SA follows the issuing of a Screening Opinion provided by Broadland District Council (BDC) and the Broads Authority (BA) and the subsequent production of an SA Scoping Report.
- 1.5. The SA Scoping Report was subjected to a formal consultation with relevant statutory agencies. A number of minor alterations to the Scoping Report were made in response to suggestions from Natural England and the Broads Authority. English Heritage and the Environment Agency did not respond to the consultation exercise.

Location and Local Government administrative context

- 1.6. Acle is in the English county of Norfolk. It is located approximately 11 miles to the east of Norwich and nine miles to the west of Great Yarmouth. The village is bounded by the Norfolk and Suffolk Broads to the north and land to the west of the village is predominantly arable agricultural land.
- 1.7. The Acle Neighbourhood Plan boundary is contiguous with the boundary of the civil Parish of Acle (see below).

Figure 1: Acle Neighbourhood Plan Area



- 1.8. As the plan above illustrates, the majority of Acle Parish is located within BDC’s administrative area but parts of the Parish are located within the BA’s administrative area.
- 1.9. Both BDC and the BA are therefore the local planning authorities for the purpose of this Neighbourhood Plan. Reflecting this, this SA takes into account issues affecting both Local Authority areas.

Background to Sustainability Appraisal

- 1.10. Sustainability Appraisal is a systematic process undertaken during the preparation of a plan or strategy, as required by the Planning and Compulsory Purchase Act 2004 (S19(5)).
- 1.11. There is also a requirement for Development Plan Documents such as Neighbourhood Plans to undergo an environmental assessment, (known as a Strategic Environmental Assessment) under European Directive 2001/42/EC (transposed into UK legislation by the Environmental Assessment of Plans and Programmes Regulations 2004).
- 1.12. It is intended that this Sustainability Appraisal incorporates the Strategic Environmental Assessment in accordance with the regulations.
- 1.13. The Sustainability Appraisal process will:
- Adopt a long-term view of development within the area covered by the plan, with particular interest on the social, environmental, and economic effects of the proposed plan
 - Develop an effective system for ensuring that sustainability objectives are transformed into sustainable planning policies
 - Reflect global and national concerns, as well as concerns at the regional and local levels
 - Provide an audit trail of how the ANP has been revised to take into account the findings of the sustainability appraisal.
 - Incorporate the requirements of the Strategic Environmental Assessment Directive
 - Produce and consult on a Scoping Report early in the process for the plan.
- 1.14. Government guidance on undertaking Sustainability Appraisal of Local Development Documents (of which the ANP will be comparable to) presents a five-stage process, each of which contains criteria to fulfil that requirement. These stages are described in Government guidance in the following manner:

Figure 2: Sustainability appraisal tasks

Stage	Tasks
Stage A:	Pre-production, setting the context and objectives, evidence gathering to establish a baseline and deciding on the scope, culminating in production of scoping report
Stage B:	Developing and refining options and assessing effects and mitigation by testing plan objectives against the SA Framework
Stage C:	Documenting and appraising the effects of the plan and preparing the SA Report
Stage D:	Consulting on the plan and the SA Report

Stage E:	Monitoring the significant effects of implementing the plan
-----------------	---

Source: Sustainability Appraisal of Regional Spatial Strategies and Local Development Documents, ODPM 2005)

- 1.15. Sustainability Appraisal is an iterative and on-going process. However, in relation to the table above, Stage A has now been completed.
- 1.16. This report represents a summary of Stage B and the outcome of Stage C.
- 1.17. The six main tasks within Stage B have been completed and are set out in this document. The table below illustrates the specific tasks.

Figure 3: Stage B sustainability appraisal tasks

Stage ref.	Tasks
B1	Testing neighbourhood plan objectives against SA objectives
B2	Developing and refining neighbourhood plan alternative options
B3 & B4	Predicting and evaluating the significant effects of the neighbourhood plan
B5	Considering ways of mitigating adverse effects and maximising benefits
B6	Proposing measures to monitor the significant effects of implementing the neighbourhood plan

Acle Neighbourhood Plan

- 1.18. The Acle Neighbourhood Plan will be a Neighbourhood Development Plan for the Parish of Acle. The power to produce neighbourhood plans is an output of the Localism Act (2011).
- 1.19. The aim of neighbourhood planning is for local communities to have greater control over what happens in their area.
- 1.20. The process of producing the Plan is being undertaken by a Working Group that reports to Acle Parish Council.
- 1.21. The Acle Neighbourhood Plan Working Group comprises a wide cross-section of representatives from local community organisations as follows:
- Acle Parish Council
 - Norfolk County Council
 - Acle Society
 - Acle Youth Club
 - Acle Academy
 - Acle Recreation Centre & Social Club
 - St Edmund VC Primary School
 - Churches Together
 - Acle Youth Ambassador
- 1.22. The Working Group has been in operation since April 2013. Since that time it has held a number of meetings to discuss baseline information, a Neighbourhood Plan vision, objectives and has prepared a set of draft policies.

- 1.23. The Working Group organised and held an open public consultation event on Saturday 29th June. At the event, attendees from the local community were asked to record what they liked and disliked about the village, what their vision was for the future and to review a series of objectives for the ANP. The vision and objectives set out below emerged from this event.

Vision

- 1.24. **The vision for the Neighbourhood Plan is to ensure that Acle is a flourishing village and gateway to the broads that maintains a strong sense of community whilst embracing a sustainable and prosperous future as a place where people choose to live, work and visit.**

Objectives

Community and leisure

- To support enhanced education facilities for all age groups
- To improve the ability of the village centre to be used for community events
- To improve access to formal and informal sports and leisure provision.

Movement and transport

- To improve conditions for walking and cycling from the village centre to the surrounding countryside
- To reduce the dominance of the highway in the village centre
- To support enhanced public transport infrastructure.

Business and employment

- To protect and enhance provision of small traditional retail in the village centre
- To ensure that employment sites are developed for an appropriate mix of employment uses
- To improve the attractiveness of Acle for inward investment

Housing

- To make sure any new housing development has an appropriate mix of affordable units
- To make sure any new housing development includes an appropriate mix of units of different sizes for both young and old households
- To make sure any new housing development is of the highest quality and reflects local and traditional architectural styles

- 1.25. Following this initial public consultation event, the Neighbourhood Plan Working Group prepared an initial set of draft policies. The policies reflected comment received from the local community at the June 2013 consultation event, the views of the stakeholders that make up the Working Group and the results of a process of baseline research.

- 1.26. The initial policies were tested with the local community at a public consultation event in Acle held on 12th October 2013. Responses and input from the local community were then fed into the policies and a number of revisions and amendments were made. The policies were also reviewed informally with officers from Broadland District Council in order to test their conformity with strategic planning policy.
- 1.27. The policies resulting from this process of development and testing were presented in the pre-submission draft Neighbourhood Plan which was the subject of a process of formal consultation alongside this document.

SA report structure

- 1.28. The remainder of this document is structured as follows:
- Section 2 provides an appraisal of the draft Neighbourhood Plan objectives against the SA objectives
 - Section 3 provides an appraisal of the draft Neighbourhood Plan policies against the SA objectives
 - Section 4 concludes the SA report and outlines next steps in the Plan's development.

2. Appraisal of draft Neighbourhood Plan objectives (Task B1)

- 2.1. The purpose of this task of the SA is to assess the sustainability of the draft Neighbourhood Plan objectives against the SA objectives set out and tested in the SA Scoping Report.
- 2.2. The draft Neighbourhood Plan objectives were developed to reflect the objectives of the Neighbourhood Plan Working Group. They were tested with the general public at the public consultation event in June 2013. The results of the public consultation event in relation to this component are presented in Figure 4 below which demonstrates broad support for all of the proposed objectives.
- 2.3. The SA objectives were developed during Stage A of the SA process. They were tested with statutory agencies during the SA Scoping Report consultation. One further objective was added as a result of comments from Natural England on the SA Scoping Report (ENV12).
- 2.4. The results of the appraisal of the draft Neighbourhood Plan objectives are presented in Figure 5 below. The figure illustrates that the majority of the draft Neighbourhood Plan objectives are compatible with the SA objectives. The only two draft Neighbourhood Plan objectives that were found to be incompatible with SA objectives are objectives 8 and 12 which relate to some form of possible greenfield development and could therefore impact biodiversity (ENV4) and soil resources (ENV11).

Figure 4: Feedback on draft objectives from June 2013 public consultation

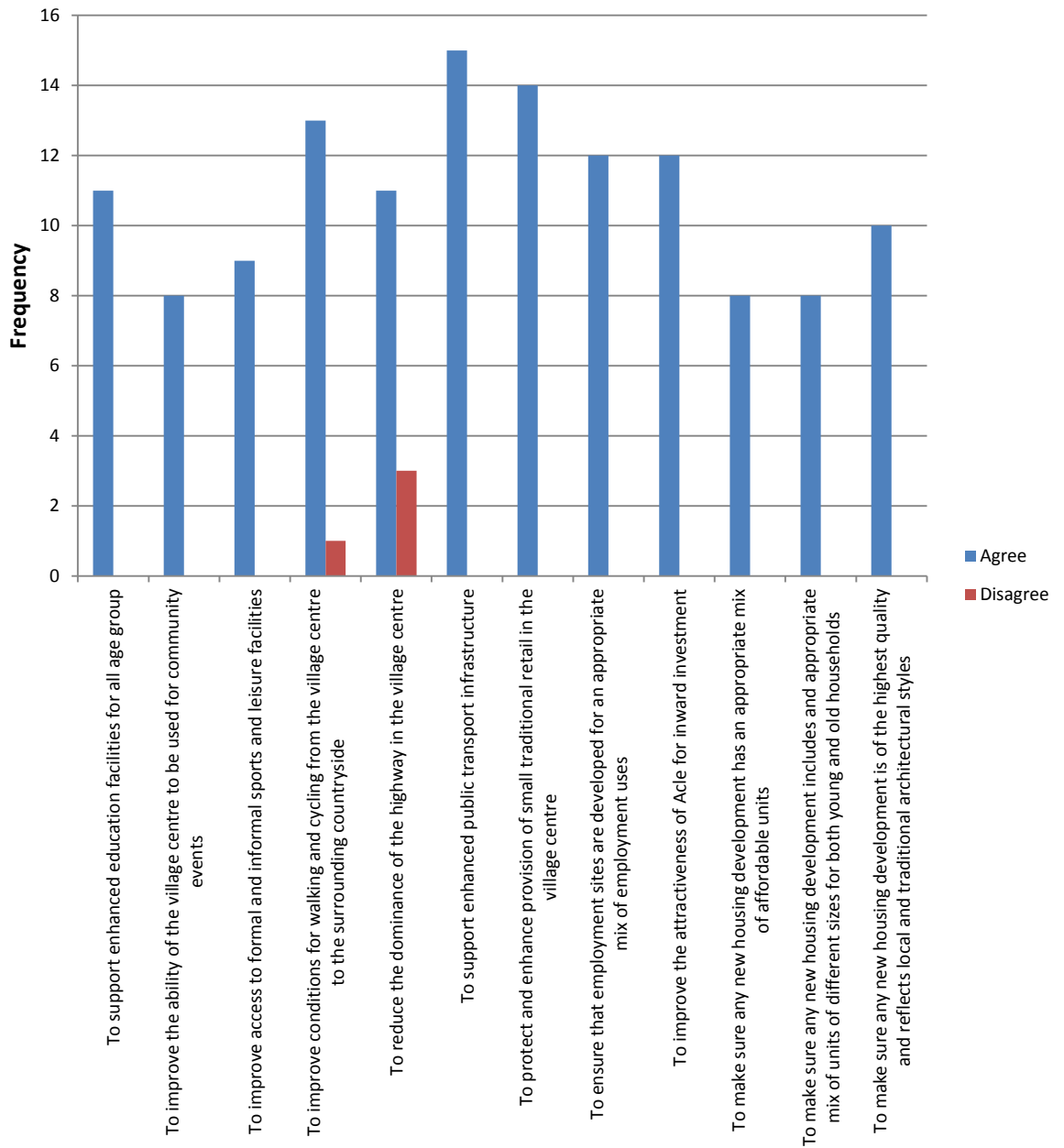


Figure 5: Sustainability appraisal of Neighbourhood Plan objectives

SA Objectives	Neighbourhood Plan Objectives						
		Community and Leisure			Movement and Transport		
		Objective 1	Objective 2	Objective 3	Objective 4	Objective 5	Objective 6
	Ref'	To improve the ability of the village centre to be used for community events	To support enhanced education facilities for all age groups	To improve access to formal and informal sports and leisure provision.	To improve conditions for walking and cycling from the village centre to the surrounding countryside	To reduce the dominance of the highway in the village centre	To support enhanced public transport infrastructure.
Environmental							
To reduce the effect of traffic on the environment	ENV1	Compatible	No links	Compatible	Compatible	Compatible	Compatible
To improve water quality	ENV2	No links	No links	No links	No links	No links	No links
To improve air quality	ENV3	Compatible	Compatible	Compatible	Compatible	Compatible	Compatible
To maintain and enhance biodiversity, flora and fauna	ENV4	No links	Compatible	Compatible	Compatible	Compatible	Compatible
To maintain and enhance the quality of Norfolk and Suffolk Broads landscape	ENV5	Compatible	Compatible	Compatible	Compatible	Compatible	Compatible
To conserve and where appropriate enhance the historic environment	ENV6	Compatible	No links	No links	Compatible	Compatible	No links
To reduce contributions to climate change	ENV7	Compatible	Compatible	Compatible	Compatible	Compatible	Compatible
To avoid, reduce and manage flood risk	ENV8	Compatible	No links	Compatible	Compatible	Compatible	No links
To provide for sustainable sources of water supply	ENV9	No links	Compatible	No links	No links	No links	No links
To minimise the production of waste	ENV10	No links	Compatible	No links	No links	No links	No links
To conserve soil resources and quality	ENV11	No links	No links	No links	No links	No links	No links
To preserve geological assets and geodiversity	ENV12	No links	No links	No links	No links	No links	No links
Social							
To reduce poverty and social exclusion	SOC1	Compatible	Compatible	Compatible	Compatible	No links	Compatible
To improve health of the population overall	SOC2	Compatible	Compatible	Compatible	Compatible	Compatible	Compatible
To improve the education and skills of the population overall	SOC3	Compatible	Compatible	Compatible	No links	No links	No links
To provide everybody with the opportunity to live in a decent home	SOC4	No links	No links	No links	No links	No links	No links

To reduce anti-social behaviour	SOC5	Compatible	Compatible	Compatible	No links	No links	No links
To encourage a sense of community identify and welfare	SOC6	Compatible	Compatible	Compatible	Compatible	Compatible	Compatible
To offer everybody the opportunity for rewarding and satisfying employment locally	SOC7	No links	Compatible	No links	No links	No links	No links
To improve the quality of where people live	SOC8	Compatible	Compatible	Compatible	Compatible	Compatible	Compatible
To improve accessibility to essential services and facilities	SOC9	Compatible	Compatible	Compatible	Compatible	Compatible	Compatible
To improve accessibility for those most in need	SOC10	No links	Compatible	Compatible	Compatible	Compatible	Compatible
Economic							
To encourage sustained economic growth	ECON1	Compatible	Compatible	No links	Compatible	Compatible	Compatible
To reduce disparities in economic performance	ECON2	Compatible	Compatible	No links	Compatible	Compatible	Compatible
To encourage and accommodate both indigenous and inward investment	ECON3	Compatible	Compatible	No links	Compatible	Compatible	Compatible
To encourage efficient patterns of movement in support of economic growth	ECON4	Compatible	No links	No links	Compatible	Compatible	Compatible
To enhance the image of the area as a business location	ECON5	Compatible	Compatible	Compatible	Compatible	Compatible	Compatible
To improve the social and environmental performance of the economy	ECON6	Compatible	Compatible	Compatible	Compatible	Compatible	Compatible

SA Objectives	Neighbourhood Plan Objectives						
		Business and employment			Housing		
		Objective 7	Objective 8	Objective 9	Objective 10	Objective 11	Objective 12
	Ref'	To protect and enhance provision of small traditional retail in the village centre	To ensure that employment sites are developed for an appropriate mix of employment uses	To improve the attractiveness of Acle for inward investment	To make sure any new housing development has an appropriate mix of affordable units	To make sure any new housing development includes an appropriate mix of units of different sizes for both young and old households	To make sure any new housing development is of the highest quality and reflects local and traditional architectural styles
Environmental							
To reduce the effect of traffic on the environment	ENV1	Compatible	Compatible	Compatible	No links	No links	No links
To improve water quality	ENV2	No links	No links	No links	No links	No links	No links
To improve air quality	ENV3	No links	No links	No links	No links	No links	No links
To maintain and enhance biodiversity, flora and fauna	ENV4	No links	Incompatible	Compatible	No links	No links	Compatible
To maintain and enhance the quality of Norfolk and Suffolk Broads landscape	ENV5	Compatible	Compatible	Compatible	No links	No links	Compatible
To conserve and where appropriate enhance the historic environment	ENV6	Compatible	Compatible	Compatible	No links	No links	Compatible
To reduce contributions to climate change	ENV7	Compatible	Compatible	Compatible	No links	No links	Compatible
To avoid, reduce and manage flood risk	ENV8	Compatible	No links	Compatible	No links	No links	Compatible
To provide for sustainable sources of water supply	ENV9	No links	No links	Compatible	No links	No links	Compatible
To minimise the production of waste	ENV10	No links	No links	No links	No links	No links	Compatible
To conserve soil resources and quality	ENV11	No links	Incompatible	No links	No links	No links	Incompatible
To preserve geological assets and geodiversity	ENV12	No links	No links	No links	No links	No links	No links
Social							
To reduce poverty and social exclusion	SOC1	Compatible	Compatible	Compatible	Compatible	Compatible	No links
To improve health of the population overall	SOC2	No links	No links	Compatible	Compatible	Compatible	No links
To improve the education and skills of the population overall	SOC3	No links	No links	Compatible	No links	No links	No links

To provide everybody with the opportunity to live in a decent home	SOC4	No links	No links	Compatible	Compatible	Compatible	Compatible
To reduce anti-social behaviour	SOC5	No links	No links	Compatible	Compatible	Compatible	Compatible
To encourage a sense of community identity and welfare	SOC6	Compatible	Compatible	Compatible	Compatible	Compatible	Compatible
To offer everybody the opportunity for rewarding and satisfying employment locally	SOC7	Compatible	Compatible	Compatible	No links	No links	No links
To improve the quality of where people live	SOC8	Compatible	Compatible	Compatible	Compatible	Compatible	Compatible
To improve accessibility to essential services and facilities	SOC9	Compatible	Compatible	Compatible	Compatible	Compatible	Compatible
To improve accessibility for those most in need	SOC10	Compatible	Compatible	Compatible	Compatible	Compatible	Compatible
Economic							
To encourage sustained economic growth	ECON1	Compatible	Compatible	Compatible	Compatible	Compatible	Compatible
To reduce disparities in economic performance	ECON2	Compatible	Compatible	Compatible	Compatible	Compatible	Compatible
To encourage and accommodate both indigenous and inward investment	ECON3	Compatible	Compatible	Compatible	Compatible	Compatible	Compatible
To encourage efficient patterns of movement in support of economic growth	ECON4	Compatible	Compatible	Compatible	Compatible	Compatible	Compatible
To enhance the image of the area as a business location	ECON5	Compatible	Compatible	Compatible	Compatible	Compatible	Compatible
To improve the social and environmental performance of the economy	ECON6	Compatible	Compatible	Compatible	Compatible	Compatible	Compatible

3. Appraisal of draft Neighbourhood Plan policies (Task B2,3,4 and 5)

- 3.1. The purpose of this task of the SA is to assess the sustainability of the draft Neighbourhood Plan policies against the SA objectives set out and tested in the SA Scoping Report. Where appropriate, the purpose of this section is also to identify mitigation measures to prevent, reduce or offset any significant negative effects of proposed policies and to maximise positive effects.
- 3.2. The policies set out in the draft Neighbourhood Plan provide general guidance on future spatial interventions and do not address the quantum or location of major development. The options represent the preferred approach of the Working Group which is considered the only realistic alternative option compared to a 'policy off' position.

Appraisal of Neighbourhood Plan policies

- 3.3. The tables below contain the appraisal of draft Neighbourhood Plan policies against the SA objectives. The effects of policies against the SA objectives are expressed as follows:
- ++ (significant positive effect)
 - + (positive effect)
 - [blank] (neutral effect)
 - (negative effect)
 - (significant negative effect)

Additional key to tables

- T = Timescale: Over what timescale are the effects likely to occur? (Short-term, ST (0-5 years), Medium Term, MT (5-10 years), Long Term, LT (10+ years))
- P = Permanence: Are effects likely to be permanent (P) or temporary (T)
- G = Geographical area: Over what geographical area are the effects likely to occur (Local Area, A, County wide C, Cross border B)
- L = Likelihood: What is the likelihood or probability of the effects occurring?(Likely, L or Unlikely, U)

Draft policy 1: Acle Bridge area improvements								
SA Objective	Nature of effect	Assessment of effect					Justification and evidence	Suggested mitigation and enhancement measures
		T	P	G	L	S		
ENV1: To reduce the effect of traffic on the environment	Access off the A1064 will be improved	MT	P	A	L	+	Any redevelopment will be required to deliver access improvements	None
ENV2: To improve water quality	Potential for increased run-off into water system	MT	P	B	U	-	The Acle Bridge area is in the flood plain and is bisected by the river Bure	Development is limited to brownfield land. Any development would be subject to detailed floor risk due diligence and appropriate mitigation measures implemented.
ENV3: To improve air quality								
ENV4: To maintain and enhance biodiversity, flora and fauna								
ENV5: To maintain and enhance the quality of the Norfolk and Suffolk Broads landscapes	Appearance of the area will be improved	MT	P	A	L	+	Built environment survey identified area for improvement	None
ENV6: To conserve and where appropriate enhance the historic environment	Potential impact of new development on adjacent SAM	MT	P	A	U	-	The Acle Bridge area is adjacent to the St Mary's Priory SAM	Any new development will need to be mindful of proximity to SAM and seek to enhance its setting and interpretation
ENV7: To reduce contributions to climate change								
ENV8: To avoid, reduce and manage flood risk	Potential for increased run-off into water system	MT	P	B	U	-	The Acle Bridge area is in the flood plain and is bisected by the river Bure	Development is limited to brownfield land. Any development would be subject to detailed floor risk due diligence and appropriate mitigation measures implemented.
ENV9: To provide for sustainable sources of water supply								
ENV10: To minimise the production of waste								

ENV11: To conserve soil resources and quality	Brownfield land will be redeveloped	MT	P	A	L	+	Development on greenfield land in this area is considered unacceptable	None
ENV12: To preserve geological assets and geodiversity								
SOC1: To reduce poverty and social exclusion	Job creation		P	A	L	+	Redevelopment would generate new job opportunities	None
SOC2: To improve health of the population overall	Improved walking and cycling routes		P	A	L	+	Any redevelopment is required to be accompanied by improvements to walking and cycling connections	None
SOC3: To improve the education and skills of the population overall								
SOC4: To provide everybody with the opportunity to live in a decent home								
SOC5: To reduce anti-social behaviour								
SOC6: To encourage a sense of community identity and welfare								
SOC7: To offer everybody the opportunity for rewarding and satisfying employment	Job creation	MT	P	A	L	+	Redevelopment would generate new job opportunities	None
SOC8: To improve the quality of where people live	Appearance of the area will be improved	MT	P	A	L	+	Redevelopment would remove under-used buildings and brownfield sites	None
SOC9: To improve accessibility to essential services and facilities								
SOC10: To improve accessibility for those most in need								
ECON1: To encourage sustained economic growth	Job creation	MT	P	A	L	+	Redevelopment would generate new job opportunities	None
ECON2: To reduce disparities in economic performance	Job creation	MT	P	A	L	+	Redevelopment would generate new job opportunities	None
ECON3: To encourage and accommodate both indigenous and inward investment	Opportunities created for new investment	MT	P	A	L	+	Redevelopment would create opportunities for investment in new facilities	None
ECON4: To encourage efficient patterns of movement in support of economic growth	Improved walking and cycling routes	MT	P	A	L	+	Any redevelopment is required to be accompanied by improvements to walking and cycling connections	None
ECON5: To enhance the image of the area as a business location	Appearance of the area will be improved	MT	P	A	L	+	Redevelopment would remove under-used buildings and brownfield sites	None

<p>ECON 6: To improve the social and environmental performance of the economy</p>	<p>Improved walking and cycling routes</p>	<p>MT</p>	<p>P</p>	<p>A</p>	<p>L</p>	<p>+</p>	<p>Any redevelopment is required to be accompanied by improvements to walking and cycling connections</p>	<p>None</p>
--	--	-----------	----------	----------	----------	----------	---	-------------

Draft policy 2: Village centre public realm improvements								
SA Objective	Nature of effect	Assessment of effect					Justification and evidence	Suggested mitigation and enhancement measures
		T	P	G	L	S		
ENV1: To reduce the effect of traffic on the environment								
ENV2: To improve water quality								
ENV3: To improve air quality								
ENV4: To maintain and enhance biodiversity, flora and fauna								
ENV5: To maintain and enhance the quality of the Norfolk and Suffolk Broads landscapes								
ENV6: To conserve and where appropriate enhance the historic environment	Improved appearance of the historic village core	LT	P	A	L	++	Policy will result in reduction in large areas of high way which detract from attractiveness of the village centre	None
ENV7: To reduce contributions to climate change								
ENV8: To avoid, reduce and manage flood risk								
ENV9: To provide for sustainable sources of water supply								
ENV10: To minimise the production of waste								
ENV11: To conserve soil resources and quality								
ENV12: To preserve geological assets and geodiversity								
SOC1: To reduce poverty and social exclusion								
SOC2: To improve health of the population overall	Improved pedestrian environment will be provided	LT	p	A	L	+	Improvements to public realm should encourage more people to walk and cycle to the village centre rather than drive	None
SOC3: To improve the education and skills of the population overall								
SOC4: To provide everybody with the opportunity to live in a decent home								
SOC5: To reduce anti-social behaviour								
SOC6: To encourage a sense of community identity and welfare	Greater sense of local community identity	LT	P	A	L	++	A new village green will improve the appearance and distinctiveness of Acle centre and improve the environment for pedestrians	None
SOC7: To offer everybody the opportunity for rewarding and satisfying employment								
SOC8: To improve the quality of where people live	Improved pedestrian environment and new public spaces will be	LT	P	A	L	++	A new village green will create a space for events	None

	provided							and activities and improve the environment for pedestrians	
SOC9: To improve accessibility to essential services and facilities	Improvements to the pedestrian environment	LT	P	A	L	+		Improved pedestrian environment will increase accessibility to services and facilities	None
SOC10: To improve accessibility for those most in need	Improvements to the pedestrian environment	LT	P	A	L	+		Improved pedestrian environment will increase accessibility to services and facilities, particularly for specific disadvantaged groups such as the elderly and disabled	None
ECON1: To encourage sustained economic growth	Improved attractiveness of village centre for economic activity	LT	P	A	L	++		Improved attractiveness will create a stronger attraction for economic activity	None
ECON2: To reduce disparities in economic performance	Improved attractiveness of village centre for economic activity	LT	P	A	L	+		Improved attractiveness will create a stronger attraction for economic activity	None
ECON3: To encourage and accommodate both indigenous and inward investment	Improved attractiveness of village centre for economic activity	LT	P	A	L	++		Improved attractiveness will create a stronger attraction for inward investment and new business start-ups	None
ECON4: To encourage efficient patterns of movement in support of economic growth									
ECON5: To enhance the image of the area as a business location	Improved attractiveness of village centre for economic activity	LT	P	A	L	++		Improved attractiveness will create a stronger attraction for economic activity	None
ECON 6: To improve the social and environmental performance of the economy	Improved attractiveness of village centre for economic activity	LT	P	A	L	+		Improved public realm and new green will create space for social interaction which will support economic activity	None

Draft policy 3: Acle Academy								
SA Objective	Nature of effect	Assessment of effect					Justification and evidence	Suggested mitigation and enhancement measures
		T	P	G	L	S		
ENV1: To reduce the effect of traffic on the environment								
ENV2: To improve water quality								
ENV3: To improve air quality								
ENV4: To maintain and enhance biodiversity, flora and fauna								
ENV5: To maintain and enhance the quality of the Norfolk and Suffolk Broads landscapes								
ENV6: To conserve and where appropriate enhance the historic environment								
ENV7: To reduce contributions to climate change	Reduced impact on climate change through delivery of more modern & sustainable building stock	M T	P	B	L	+	Existing building stock is old and likely to be inefficient. Any improvements would reduce the overall impact of the Academy	None
ENV8: To avoid, reduce and manage flood risk								
ENV9: To provide for sustainable sources of water supply								
ENV10: To minimise the production of waste								
ENV11: To conserve soil resources and quality								
ENV12: To preserve geological assets and geodiversity								
SOC1: To reduce poverty and social exclusion	Improved performance of Academy and improved learner attainment	M T	P	A	L	+	New facilities will improve the attractiveness of the Academy and improve the learning environment for students	None
SOC2: To improve health of the population overall	Improved health amongst young people and wider community	M T	P	A	L	++	Increased access to high quality sports facilities will improve the health of students and local residents	None
SOC3: To improve the education and skills of the population overall	New sports facilities will improve education and skills for young people	M T	P	A	L	++	Increased access to high quality sports facilities will improve learner environment	None
SOC4: To provide everybody with the opportunity to live in a decent home								
SOC5: To reduce anti-social behaviour	Reduction in anti-social behaviour by providing new facilities for young people	M T	P	A	L	+	New sports facilities could provide new out of school hours opportunities for young people and	None

								mitigate anti-social behaviour	
SOC6: To encourage a sense of community identity and welfare	New facilities would increase community welfare	M T	P	A	L	+		New facilities would be available for use for the wider community	None
SOC7: To offer everybody the opportunity for rewarding and satisfying employment	Increased employment and increased employability	M T	P	C	L	+		New facilities could provide new jobs and help to increase the employability of local students	None
SOC8: To improve the quality of where people live	New facilities would improve quality of Acle as a place to live	M T	P	A	L	+		New facilities would be available for use for the wider community	None
SOC9: To improve accessibility to essential services and facilities	Improved sports and education facilities in Acle	M T	P	A	L	+		New enhanced facilities in Acle will reduce the need for people to travel elsewhere	None
SOC10: To improve accessibility for those most in need									
ECON1: To encourage sustained economic growth									
ECON2: To reduce disparities in economic performance									
ECON3: To encourage and accommodate both indigenous and inward investment									
ECON4: To encourage efficient patterns of movement in support of economic growth									
ECON5: To enhance the image of the area as a business location									
ECON 6: To improve the social and environmental performance of the economy									

Draft policy 4: Pre School Provision								
SA Objective	Nature of effect	Assessment of effect					Justification and evidence	Suggested mitigation and enhancement measures
		T	P	G	L	S		
ENV1: To reduce the effect of traffic on the environment	Reduction in traffic	MT	P	C	L	+	Enhanced pre-school provision would reduce the need for users to travel elsewhere for equivalent facilities	None
ENV2: To improve water quality								
ENV3: To improve air quality								
ENV4: To maintain and enhance biodiversity, flora and fauna								
ENV5: To maintain and enhance the quality of the Norfolk and Suffolk Broads landscapes								
ENV6: To conserve and where appropriate enhance the historic environment								
ENV7: To reduce contributions to climate change	Reduced contribution to climate change	MT	P	B	L	+	Replacement facilities would be significantly more environmentally sustainable than the current old pre-fabricated building	None
ENV8: To avoid, reduce and manage flood risk								
ENV9: To provide for sustainable sources of water supply								
ENV10: To minimise the production of waste								
ENV11: To conserve soil resources and quality								
ENV12: To preserve geological assets and geodiversity								
SOC1: To reduce poverty and social exclusion								
SOC2: To improve health of the population overall								
SOC3: To improve the education and skills of the population overall	Pre-school needs will be fully met locally	MT	P	A	L	+	New pre-school facilities will enable the needs of the community to be fully met locally	None
SOC4: To provide everybody with the opportunity to live in a decent home								
SOC5: To reduce anti-social behaviour								
SOC6: To encourage a sense of community identity and welfare								
SOC7: To offer everybody the opportunity for rewarding and satisfying employment								
SOC8: To improve the quality of where people live								

SOC9: To improve accessibility to essential services and facilities	Pre-school needs will be fully met locally	MT	P	A	L	+	New pre-school facilities will enable the needs of the community to be fully met locally	None
SOC10: To improve accessibility for those most in need	Pre-school needs will be fully met locally	MT	P	A	L	+	New pre-school facilities will enable the needs of the community to be fully met locally, particularly for those without the means to travel elsewhere for pre-school needs	None
ECON1: To encourage sustained economic growth								
ECON2: To reduce disparities in economic performance								
ECON3: To encourage and accommodate both indigenous and inward investment								
ECON4: To encourage efficient patterns of movement in support of economic growth								
ECON5: To enhance the image of the area as a business location								
ECON 6: To improve the social and environmental performance of the economy								

Draft policy 5: Improving links to the countryside and surrounding villages								
SA Objective	Nature of effect	Assessment of effect					Justification and evidence	Suggested mitigation and enhancement measures
		T	P	G	L	S		
ENV1: To reduce the effect of traffic on the environment	Reduction in vehicular traffic making local journeys	MT	P	A	L	+	Improved walking and cycling routes will make it easier for people to make local trips without the need to travel by car	None
ENV2: To improve water quality								
ENV3: To improve air quality	Reduction in vehicular traffic making local journeys	MT	P	A	L	+	Improved walking and cycling routes will make it easier for people to make local trips without the need to travel by car	None
ENV4: To maintain and enhance biodiversity, flora and fauna								
ENV5: To maintain and enhance the quality of the Norfolk and Suffolk Broads landscapes								
ENV6: To conserve and where appropriate enhance the historic environment								
ENV7: To reduce contributions to climate change	Reduced contribution to climate change	ST	P	B	L	+	Increased levels of walking and cycling could reduce use of private car	None
ENV8: To avoid, reduce and manage flood risk								
ENV9: To provide for sustainable sources of water supply								
ENV10: To minimise the production of waste								
ENV11: To conserve soil resources and quality								
ENV12: To preserve geological assets and geodiversity								
SOC1: To reduce poverty and social exclusion								
SOC2: To improve health of the population overall	Increase in people making local trips on foot or bicycle	MT	P	A	L	+	Improved walking and cycling routes will make it easier for people to make local trips without the need to travel by car and therefore improve their health	None
SOC3: To improve the education and skills of the population overall								
SOC4: To provide everybody with the opportunity to live in a decent home								
SOC5: To reduce anti-social behaviour								
SOC6: To encourage a sense of community identity and welfare								

SOC7: To offer everybody the opportunity for rewarding and satisfying employment								
SOC8: To improve the quality of where people live	Improved access to high quality natural environment	MT	P	A	L	+	Improved walking and cycling routes will make it easier for people to access the countryside around Acle	None
SOC9: To improve accessibility to essential services and facilities	Improved accessibility to services and facilities in Acle	MT	P	A	L	+	Improved walking and cycling routes will make it easier for people from outside the village to access services in Acle	None
SOC10: To improve accessibility for those most in need	Improved accessibility to services and facilities in Acle	MT	P	A	L	+	Improved walking and cycling routes will make it easier for people from outside the village to access services in Acle, particularly for those without the means to travel by car	None
ECON1: To encourage sustained economic growth								
ECON2: To reduce disparities in economic performance								
ECON3: To encourage and accommodate both indigenous and inward investment								
ECON4: To encourage efficient patterns of movement in support of economic growth								
ECON5: To enhance the image of the area as a business location								
ECON 6: To improve the social and environmental performance of the economy								

Draft policy 6: Improving access to the Wherry Line								
SA Objective	Nature of effect	Assessment of effect					Justification and evidence	Suggested mitigation and enhancement measures
		T	P	G	L	S		
ENV1: To reduce the effect of traffic on the environment	Increased use of train as alternative to bus or car to access local towns / cities will reduce traffic	MT	P	C	L	+	Improvements to the station will make it easier and more attractive for people to use and less likely to travel by car or bus	None
ENV2: To improve water quality								
ENV3: To improve air quality	Increased use of train as alternative to bus or car to access local towns / cities will improve air quality	MT	P	C	L	+	Improvements to the station will make it easier and more attractive for people to use and less likely to travel by car or bus	None
ENV4: To maintain and enhance biodiversity, flora and fauna								
ENV5: To maintain and enhance the quality of the Norfolk and Suffolk Broads landscapes								
ENV6: To conserve and where appropriate enhance the historic environment								
ENV7: To reduce contributions to climate change	Increased use of train as alternative to bus or car to access local towns / cities will improve air quality	MT	P	C	L	+	Improvements to the station will make it easier and more attractive for people to use and less likely to travel by car or bus	None
ENV8: To avoid, reduce and manage flood risk								
ENV9: To provide for sustainable sources of water supply								
ENV10: To minimise the production of waste								
ENV11: To conserve soil resources and quality								
ENV12: To preserve geological assets and geodiversity								
SOC1: To reduce poverty and social exclusion								
SOC2: To improve health of the population overall								
SOC3: To improve the education and skills of the population overall								
SOC4: To provide everybody with the opportunity to live in a decent home								
SOC5: To reduce anti-social behaviour								
SOC6: To encourage a sense of community identity and welfare								

SOC7: To offer everybody the opportunity for rewarding and satisfying employment								
SOC8: To improve the quality of where people live								
SOC9: To improve accessibility to essential services and facilities	Improved access to services and facilities in major towns and cities	MT	P	C	L	+	Improvements to the station will make it easier for people to access services outside of Acle	None
SOC10: To improve accessibility for those most in need	Improved access to services and facilities in major towns and cities	MT	P	C	L	+	Improvements to the station will make it easier for people to access services outside of Acle, particularly for those without the means to travel by car	None
ECON1: To encourage sustained economic growth								
ECON2: To reduce disparities in economic performance								
ECON3: To encourage and accommodate both indigenous and inward investment								
ECON4: To encourage efficient patterns of movement in support of economic growth	Increased use of train as alternative to bus or car to access employment in local towns / cities	MT	P	C	L	+	Improvements to the station will make it easier for people to travel to surrounding towns for employment and reduce congestion on local roads	None
ECON5: To enhance the image of the area as a business location	Improved image as Acle as a business location	MT	P	A	L	+	Improved facilities and access at the station will improve attractiveness	None
ECON 6: To improve the social and environmental performance of the economy								

Draft policy 7: Reducing the severance effect of the A1064								
SA Objective	Nature of effect	Assessment of effect					Justification and evidence	Suggested mitigation and enhancement measures
		T	P	G	L	S		
ENV1: To reduce the effect of traffic on the environment	Improved pedestrian movements across the A1064	MT	P	A	L	+	The introduction of a formal crossing will make it easier and safer for residents and visitors to cross the A1064	None
ENV2: To improve water quality								
ENV3: To improve air quality								
ENV4: To maintain and enhance biodiversity, flora and fauna								
ENV5: To maintain and enhance the quality of the Norfolk and Suffolk Broads landscapes								
ENV6: To conserve and where appropriate enhance the historic environment								
ENV7: To reduce contributions to climate change								
ENV8: To avoid, reduce and manage flood risk								
ENV9: To provide for sustainable sources of water supply								
ENV10: To minimise the production of waste								
ENV11: To conserve soil resources and quality								
ENV12: To preserve geological assets and geodiversity								
SOC1: To reduce poverty and social exclusion								
SOC2: To improve health of the population overall								
SOC3: To improve the education and skills of the population overall								
SOC4: To provide everybody with the opportunity to live in a decent home								
SOC5: To reduce anti-social behaviour								
SOC6: To encourage a sense of community identity and welfare								
SOC7: To offer everybody the opportunity for rewarding and satisfying employment								
SOC8: To improve the quality of where people live	Improved quality of life for residents either side of the A1064	MT	P	A	L	+	The introduction of a formal crossing will make it easier and safer for residents and visitors to cross the A1064 to access the facilities on either side	None

SOC9: To improve accessibility to essential services and facilities	Improved access to services and facilities in the village centre	MT	P	A	L	+	A formal crossing will improve the ability of visitors on the Broads and residents to the east of the A1064 to access facilities in the village	None
SOC10: To improve accessibility for those most in need	Improved access to services and facilities in the village centre	MT	P	A	L	+	A formal crossing will improve the ability of disadvantaged residents such as the elderly or disabled living to the east of the A1064 to access village services	None
ECON1: To encourage sustained economic growth	Increased tourism related economic activity in the village centre	MT	P	A	L	+	The introduction of a formal crossing will make it easier and safer for visitors on the Broads to access services in the village centre	None
ECON2: To reduce disparities in economic performance								
ECON3: To encourage and accommodate both indigenous and inward investment								
ECON4: To encourage efficient patterns of movement in support of economic growth								
ECON5: To enhance the image of the area as a business location								
ECON 6: To improve the social and environmental performance of the economy								

Draft policy 8: Village centre development								
SA Objective	Nature of effect	Assessment of effect					Justification and evidence	Suggested mitigation and enhancement measures
		T	P	G	L	S		
ENV1: To reduce the effect of traffic on the environment								
ENV2: To improve water quality								
ENV3: To improve air quality								
ENV4: To maintain and enhance biodiversity, flora and fauna								
ENV5: To maintain and enhance the quality of the Norfolk and Suffolk Broads landscapes								
ENV6: To conserve and where appropriate enhance the historic environment	Preservation and enhancement of the historic environment	MT	P	A	L	+	Policy promotes sensitive development that will enhance the setting of existing historic buildings	None
ENV7: To reduce contributions to climate change								
ENV8: To avoid, reduce and manage flood risk								
ENV9: To provide for sustainable sources of water supply								
ENV10: To minimise the production of waste								
ENV11: To conserve soil resources and quality	Preservation of greenfield sites elsewhere	MT	P	A	L	+	Policy promotes development on brownfield sites in the village centre	None
ENV12: To preserve geological assets and geodiversity	Preservation of greenfield sites elsewhere	MT	P	A	L	+	Policy promotes development on brownfield sites in the village centre	None
SOC1: To reduce poverty and social exclusion								
SOC2: To improve health of the population overall								
SOC3: To improve the education and skills of the population overall								
SOC4: To provide everybody with the opportunity to live in a decent home	Delivery of new housing	MT	P	A	L	+	Policy supports residential development as part of mixture of uses	None
SOC5: To reduce anti-social behaviour								
SOC6: To encourage a sense of community identity and welfare	Increased sense of community	MT	P	A	L	+	Policy promotes development for new economic and social activity which will create a more vibrant and attractive village centre	None

SOC7: To offer everybody the opportunity for rewarding and satisfying employment	Delivery of new employment floorspace	MT	P	A	L	+	Policy supports employment development as part of mixture of uses	None
SOC8: To improve the quality of where people live	Increased quality of new development in village centre	MT	P	A	L	+	Policy promotes high quality sensitive development	None
SOC9: To improve accessibility to essential services and facilities	Increased floorspace for services and facilities	MT	P	A	L	+	Policy promotes delivery of space for services and facilities in the highly accessible village centre	None
SOC10: To improve accessibility for those most in need	Increased floorspace for services and facilities	MT	P	A	L	+	Policy promotes delivery of space for services and facilities in the highly accessible village centre	None
ECON1: To encourage sustained economic growth	New business and job creation	MT	P	A	L	+	Policy supports employment development as part of mixture of uses	None
ECON2: To reduce disparities in economic performance								
ECON3: To encourage and accommodate both indigenous and inward investment	Increased inward investment and new business start-ups	MT	P	A	L	+	Policy promotes redevelopment for inward investors or local business start-ups	None
ECON4: To encourage efficient patterns of movement in support of economic growth								
ECON5: To enhance the image of the area as a business location	Improved image of Acle	MT	P	A	L	+	Improvements to the village centre would enhance the overall image of Acle	None
ECON 6: To improve the social and environmental performance of the economy	Increased environmental performance of local economy	MT	P	A	L	+	Policy promotes delivery of employment space concentrated in the village centre with access to public transport	None

Draft policy 9: Business space								
SA Objective	Nature of effect	Assessment of effect					Justification and evidence	Suggested mitigation and enhancement measures
		T	P	G	L	S		
ENV1: To reduce the effect of traffic on the environment								
ENV2: To improve water quality								
ENV3: To improve air quality								
ENV4: To maintain and enhance biodiversity, flora and fauna								
ENV5: To maintain and enhance the quality of the Norfolk and Suffolk Broads landscapes								
ENV6: To conserve and where appropriate enhance the historic environment								
ENV7: To reduce contributions to climate change								
ENV8: To avoid, reduce and manage flood risk								
ENV9: To provide for sustainable sources of water supply								
ENV10: To minimise the production of waste								
ENV11: To conserve soil resources and quality	Loss of agricultural land to new proposed employment sites	MT	P	A	L	-	The new sites proposed for employment use are currently used for arable farming.	Any new development will be required to deliver environmental improvements to the site boundaries.
ENV12: To preserve geological assets and geodiversity								
SOC1: To reduce poverty and social exclusion								
SOC2: To improve health of the population overall								
SOC3: To improve the education and skills of the population overall								
SOC4: To provide everybody with the opportunity to live in a decent home								
SOC5: To reduce anti-social behaviour								
SOC6: To encourage a sense of community identity and welfare								
SOC7: To offer everybody the opportunity for rewarding and satisfying employment	Employment creation	MT	P	A	L	++	Policy promotes new employment development and proposes new allocations at small sites where there has been market interest.	None
SOC8: To improve the quality of where people live								
SOC9: To improve accessibility to essential services and facilities								
SOC10: To improve accessibility for those most in need								

ECON1: To encourage sustained economic growth	Employment creation	MT	P	A	L	++	Policy promotes two new small sites that could be delivered relatively easily and where there has been market interest. Policy also promotes delivery of space at a range of different sizes.	None
ECON2: To reduce disparities in economic performance	Increased average earnings	MT	P	A	L	+	Policy prioritises higher value added employment uses.	None
ECON3: To encourage and accommodate both indigenous and inward investment	New employment floorspace	MT	P	A	L	++	Policy promotes two new small sites that represent attractive inward investment opportunities.	None
ECON4: To encourage efficient patterns of movement in support of economic growth								
ECON5: To enhance the image of the area as a business location	Delivery of new high quality employment floorspace	MT	P	A	L	+	Policy prioritises high quality development	None
ECON 6: To improve the social and environmental performance of the economy								

Draft policy 10: Future housing mix									
SA Objective	Nature of effect	Assessment of effect					Justification and evidence	Suggested mitigation and enhancement measures	
		T	P	G	L	S			
ENV1: To reduce the effect of traffic on the environment									
ENV2: To improve water quality									
ENV3: To improve air quality									
ENV4: To maintain and enhance biodiversity, flora and fauna									
ENV5: To maintain and enhance the quality of the Norfolk and Suffolk Broads landscapes									
ENV6: To conserve and where appropriate enhance the historic environment									
ENV7: To reduce contributions to climate change									
ENV8: To avoid, reduce and manage flood risk									
ENV9: To provide for sustainable sources of water supply									
ENV10: To minimise the production of waste									
ENV11: To conserve soil resources and quality									
ENV12: To preserve geological assets and geodiversity									
SOC1: To reduce poverty and social exclusion									
SOC2: To improve health of the population overall									
SOC3: To improve the education and skills of the population overall									
SOC4: To provide everybody with the opportunity to live in a decent home	Age profile of Acle residents shifting closer to district trend	L	P	A	L	+	Policy will ensure that any new housing provides a range of different units for different types of residents.	None	
SOC5: To reduce anti-social behaviour									
SOC6: To encourage a sense of community identity and welfare									
SOC7: To offer everybody the opportunity for rewarding and satisfying employment									
SOC8: To improve the quality of where people live									
SOC9: To improve accessibility to essential services and facilities									
SOC10: To improve accessibility for those most in need									

<p>ECON1: To encourage sustained economic growth</p>	<p>Increased proportion of working age residents in Acle</p>	<p>LT</p>	<p>P</p>	<p>A</p>	<p>L</p>	<p>+</p>	<p>Detailed consideration of the type of housing contained within new developments will ensure an appropriate proportion is designed for younger families</p>	<p>None</p>
<p>ECON2: To reduce disparities in economic performance</p>								
<p>ECON3: To encourage and accommodate both indigenous and inward investment</p>								
<p>ECON4: To encourage efficient patterns of movement in support of economic growth</p>								
<p>ECON5: To enhance the image of the area as a business location</p>								
<p>ECON 6: To improve the social and environmental performance of the economy</p>								

Draft policy 11: Future housing integration								
SA Objective	Nature of effect	Assessment of effect					Justification and evidence	Suggested mitigation and enhancement measures
		T	P	G	L	S		
ENV1: To reduce the effect of traffic on the environment								
ENV2: To improve water quality								
ENV3: To improve air quality								
ENV4: To maintain and enhance biodiversity, flora and fauna								
ENV5: To maintain and enhance the quality of the Norfolk and Suffolk Broads landscapes								
ENV6: To conserve and where appropriate enhance the historic environment								
ENV7: To reduce contributions to climate change								
ENV8: To avoid, reduce and manage flood risk								
ENV9: To provide for sustainable sources of water supply								
ENV10: To minimise the production of waste								
ENV11: To conserve soil resources and quality								
ENV12: To preserve geological assets and geodiversity								
SOC1: To reduce poverty and social exclusion								
SOC2: To improve health of the population overall								
SOC3: To improve the education and skills of the population overall								
SOC4: To provide everybody with the opportunity to live in a decent home								
SOC5: To reduce anti-social behaviour								
SOC6: To encourage a sense of community identity and welfare	Increased social integration of new and existing residents	MT	P	A	L	+	Consultation on new housing development will take account of existing residents views on integration and sensitive delivery	None
SOC7: To offer everybody the opportunity for rewarding and satisfying employment								
SOC8: To improve the quality of where people live	Increased physical integration of new and existing parts of Acle	MT	P	A	L	+	Consultation on new housing development will take account of existing residents views on integration and sensitive delivery	None

SOC9: To improve accessibility to essential services and facilities	Increased physical integration of new and existing parts of Acle	MT	P	A	L	+	Consultation on new housing development will ensure that appropriate links are formed between new housing on the edge of Acle and the village centre	None
SOC10: To improve accessibility for those most in need								
ECON1: To encourage sustained economic growth								
ECON2: To reduce disparities in economic performance								
ECON3: To encourage and accommodate both indigenous and inward investment								
ECON4: To encourage efficient patterns of movement in support of economic growth								
ECON5: To enhance the image of the area as a business location								
ECON 6: To improve the social and environmental performance of the economy								

Draft policy 12: Residential car parking								
SA Objective	Nature of effect	Assessment of effect					Justification and evidence	Suggested mitigation and enhancement measures
		T	P	G	L	S		
ENV1: To reduce the effect of traffic on the environment	Increase in car ownership in new developments	MT	P	B	U	0	Consultation suggests that limiting car parking spaces per house in development in Acle does not deter car ownership but results in higher levels of on-street parking.	None
ENV2: To improve water quality								
ENV3: To improve air quality								
ENV4: To maintain and enhance biodiversity, flora and fauna								
ENV5: To maintain and enhance the quality of the Norfolk and Suffolk Broads landscapes								
ENV6: To conserve and where appropriate enhance the historic environment								
ENV7: To reduce contributions to climate change								
ENV8: To avoid, reduce and manage flood risk								
ENV9: To provide for sustainable sources of water supply								
ENV10: To minimise the production of waste								
ENV11: To conserve soil resources and quality								
ENV12: To preserve geological assets and geodiversity								
SOC1: To reduce poverty and social exclusion								
SOC2: To improve health of the population overall								
SOC3: To improve the education and skills of the population overall								
SOC4: To provide everybody with the opportunity to live in a decent home								
SOC5: To reduce anti-social behaviour								
SOC6: To encourage a sense of community identity and welfare								
SOC7: To offer everybody the opportunity for rewarding and satisfying employment								
SOC8: To improve the quality of where people live	Reduced levels of on street parking	MT	P	A	L	+	Policy promotes the provision of increased levels of off-street parking for new residential development	None

SOC9: To improve accessibility to essential services and facilities									
SOC10: To improve accessibility for those most in need									
ECON1: To encourage sustained economic growth									
ECON2: To reduce disparities in economic performance									
ECON3: To encourage and accommodate both indigenous and inward investment									
ECON4: To encourage efficient patterns of movement in support of economic growth									
ECON5: To enhance the image of the area as a business location									
ECON 6: To improve the social and environmental performance of the economy									

4. Conclusions and next steps (Task B6)

Appraisal of policies

- 4.1. The appraisal tables in the previous section highlighted that the majority of draft Neighbourhood Plan policies will have either positive or significant positive effects on the local environment, community and economy.
- 4.2. A summary of the total predicted effects for each policy is provided in the table below.

Figure 6: Summary assessment of effects

	Assessment of effect				
	--	-	0	+	++
Policy 1:Acle Bridge area improvements		3		13	
Policy 2:Village centre public realm improvements				4	6
Policy 3: Acle Academy				7	2
Policy 4: Pre-school provision				5	
Policy 5: Improving links to the countryside and surrounding villages				7	
Policy 6: Improving Access to the Wherry Line				7	
Policy 7: Reducing the severance effect of the A1064				5	
Policy 8: Village centre development				13	
Policy 9: Business space		1		2	3
Policy 10: Future housing mix				2	
Policy 11: Future housing integration				3	
Policy 12: Residential car parking			1	1	
TOTAL	0	4	1	69	11

- 4.3. The summary table above highlights that in total the policies are estimated to have no significant negative effects, 4 negative effects, 1 neutral effect, 69 positive effects and 11 significant positive effects.
- 4.4. Where policies (1 and 9) are estimated to have a potentially negative effect, in each case the negative effects are considered to be outweighed by the positive effects. In both instances mitigation measures are suggested that would be delivered through the development control process.

Cumulative effect

- 4.5. Overall, the policies contained within the draft Neighbourhood Plan are likely to have a positive or significant positive effect on the environment, community and economy of Acle

over the short-, medium-, and long-term. Taken as a whole the draft Acle Neighbourhood Plan is therefore likely to have a positive effect if adopted.

Monitoring

- 4.6. Following adoption, the effects of the Acle Neighbourhood Plan will be monitored by Acle Parish Council. The monitoring framework, indicators / criteria and data sources are set out in the SA Scoping Report.

Next steps

- 4.7. This SA report will now be made available for public consultation alongside the draft Neighbourhood Plan for six weeks. Comment forms and details of where to send them are provided in the draft Neighbourhood Plan.