

**Consultation Documents Update and Proposed Response
Designating Horstead with Stanninghall as a Neighbourhood Area
Designating Lound with Ashby, Herringfleet and Somerleyton as a
Neighbourhood Area**

Report by Planning Policy Officer

Summary: The report briefly introduces two Neighbourhood Plans. Both applications were consulted on during July in relation to the areas becoming Neighbourhood Areas in order to produce a Neighbourhood Plan. The Horstead and Stanninghall consultation comments are included within this report. The Lound area consultation comments will be reported verbally at Planning Committee.

Recommendation: That the Planning Committee notes the comments received and agrees to the written (for Horstead) and verbal (for Lound area) recommendations that will arise from the nature of the comments.

1 Neighbourhood Planning

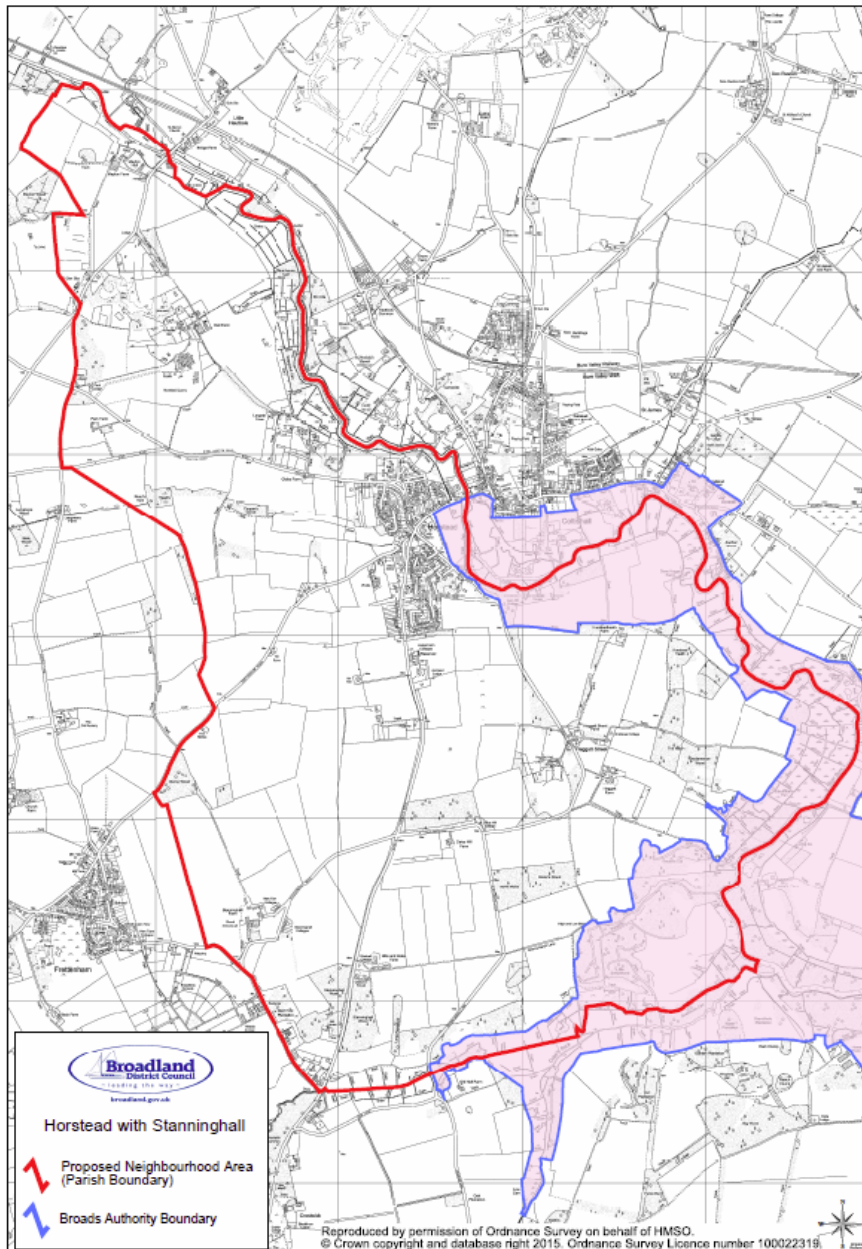
- 1.1 Neighbourhood Planning was introduced through the Localism Act 2011. Neighbourhood Planning legislation came into effect in April 2012 and gives communities the power to agree a Neighbourhood Development Plan, make a Neighbourhood Development Order and make a Community Right to Build Order.
- 1.2 A Neighbourhood Development Plan can establish general planning policies for the development and use of land in a neighbourhood, for example:
 - where new homes and offices should be built
 - what they should look like
- 1.3 Under the Neighbourhood Planning (General) Regulations 2012, parish or town councils within the Broads Authority's Executive area undertaking Neighbourhood Plans are required to apply to the Broads Authority and the relevant District Council to designate the Neighbourhood Area that their proposed plan will cover.
- 1.4 Once these nominations are received, there follows a consultation period within which any member of the public may submit written comments to the Broads Authority and the relevant District Council regarding the proposed Neighbourhood Area, who will then consider the area, and the comments received, before approving or rejecting its designation. The designation of a

Neighbourhood Area is therefore the first step in the process of preparing a Neighbourhood Plan.

- 1.5 This report covers two Neighbourhood Area consultations. The consultation period for the Horstead and Stanninghall Neighbourhood Plan ran from 5 July to 2 August 2016. The consultation period for the Lound area Neighbourhood Plan ran from 1 July to 12 August 2016. The deadline for this report was 3 August. As such, in order not to delay the Neighbourhood Plans, the comments will be reported to Planning Committee verbally with the appropriate recommendation.

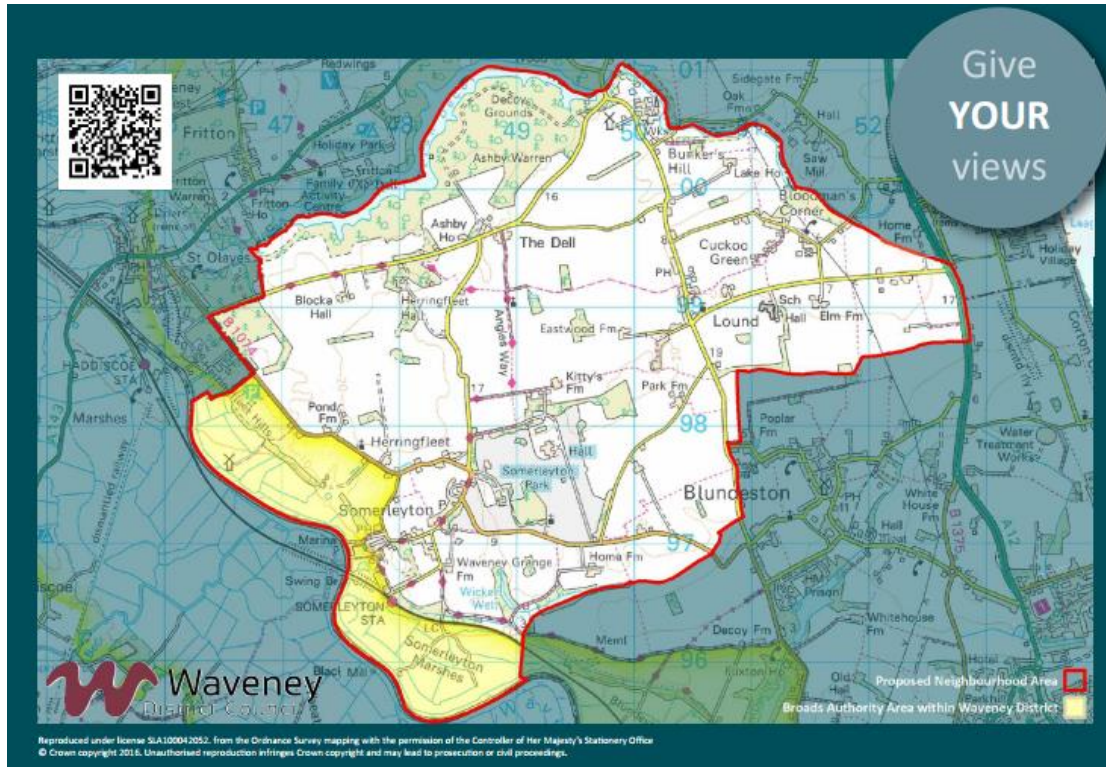
2 Horstead with Stanninghall Neighbourhood Area

- 2.1 Horstead with Stanninghall Parish Council has submitted the application for their entire Parish. The red line shows the Neighbourhood Area. Source: Broadland District Council.



3 Lound with Ashby, Herringfleet and Somerleyton Neighbourhood Area

- 3.1 Lound Parish Council and Ashby, Herringfleet and Somerleyton Parish Council have submitted the application for both Parishes. The red line shows the Neighbourhood Area. Source: Waveney District Council.



4 Links of relevance:

The Broads Authority Neighbourhood Planning webpage:
<http://www.broads-authority.gov.uk/planning/future-planning-and-policies/neighbourhood-planning.html>

Broadland District Council Neighbourhood Planning webpage:
http://www.broadland.gov.uk/housing_and_planning/4994.asp

Waveney District Council Neighbourhood Planning webpage:
<http://consult.waveney.gov.uk/consult.ti/becclesneighbourhoodarea2015/consultationHome>

Some guidance/information on Neighbourhood Planning:
<http://www.rpi.org.uk/planning-aid/neighbourhood-planning/>

5 Financial Implications

- 5.1 Occasional Officer time in supporting the process (as required by regulations). There will be no cost to the Broads Authority for the referendum at the end of the process as Broadland District Council and Waveney District Council have agreed to take on this task and cost.

6 Conclusion

6.1 Comments received will be reported verbally along with the recommendation.

Background papers:	None
Author:	Natalie Beal
Date of report:	5 July 2016
Appendices:	None