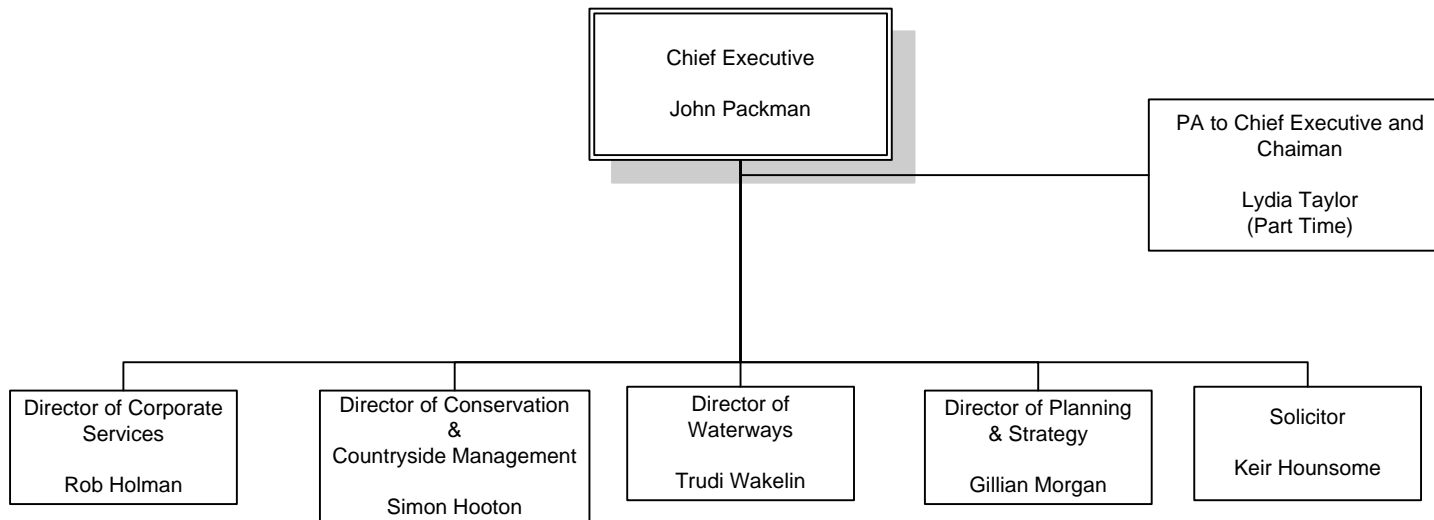
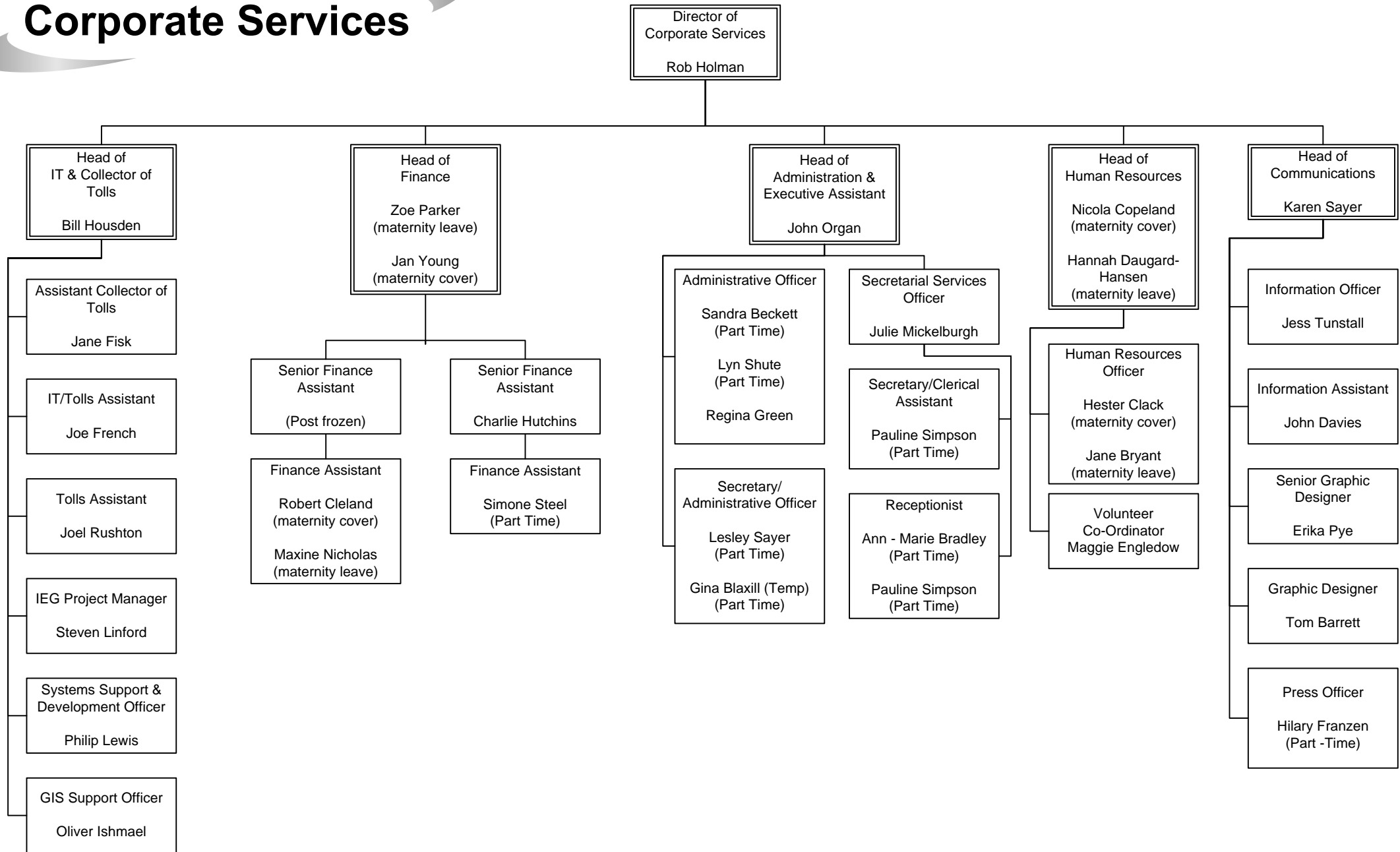


Management Team



Corporate Services



Conservation and Countryside Management

Director of Conservation & Countryside Management
Simon Hooton

Secretary/
Administrative Assistant
Jo Eames

Landscape Architect
Lesley Marsden

Head of Valley Management
Lucy Harris

Head of Recreation & Tourism Development
Bruce Hanson

Head of Conservation
Andrea Kelly

HLF Bursary Project Manager
Graham Bayne

HLF Bursary Training Officer
Sarah Heaffey

Projects Team Supervisor
Ian Walker

Technical Skills Training Officer
Simon Bunting

Senior Projects Technicians
Jason Kerr
Mark Rudrum

Projects Technicians
Glen Owen
Shaun Taylor

Projects Technician (Volunteers)
James Watts

Head Countryside Ranger (Yare)
Nick Sanderson
responsible for
Countryside Estate Ranger (Volunteers)
Malcolm Farrow

Seasonal Countryside Assistant (Mowing)
Mark Gollins
Michael Brown

Winter Seasonal Countryside Assistant
Matt Larkman

Countryside Ranger (Waveney)
Colin Hart

Countryside Ranger (Bure)
Elaina Slark
responsible for

Bure Valley Seasonal Ranger
Matt Larkman

Countryside Ranger (Ant/Thurne)
Eilish Owen-Rothney
responsible for

Seasonal Countryside Asst (Ant/Thurne)
Bob Hindley

Manager -
Whitlingham Broads
Russell Wilson

Whitlingham Countryside Ranger
Paul Botton

Whitlingham Seasonal Countryside Ranger
Edgar Hoddy

Visitor Services Manager
Sam Bates

Seasonal Information Assistant

(Beccles)
Claire Ross
Cathy Smith

(Hoveton)
Dawn Coleman
Lydia Tubby
Tina Etheridge

(Potter Heigham)
Rita Benson
Emily Robertshaw

(Ranworth)
Sue Allerton
Maureen Brown

(Whitlingham)
Maureen Bird
Albert Ward

Seasonal Information Assistant/Warden (Toad Hole Cottage)

Paul Gowman
Robin Jeffries
Brendan Russell-Wells
Stephanie Anderson
David Anderson

Countryside Events & Broads Strategy Admin Officer
Lottie Carlton (Part Time)

Conservation Officer (Fens and Grazing Marshes)
Sandie Tolhurst (Part-time)

Conservation Officer (Fens)
Sally Lucas (Maternity Leave Cover)
Sue Stephenson (Maternity Leave)

Field Conservation Manager
Rob Andrews

Field Officers (Volunteers)
Allen Field
Phil Heath

Field Officer (Machinery Operator and Maintenance)
David Marsham

Field Officer (Operations Coordinator)
Trevor Thorley

Field Officer (Harvester Operator)
Lisa Treadwell

Conservation Officer (Trinity Broads & Lound)
Hannah Gray

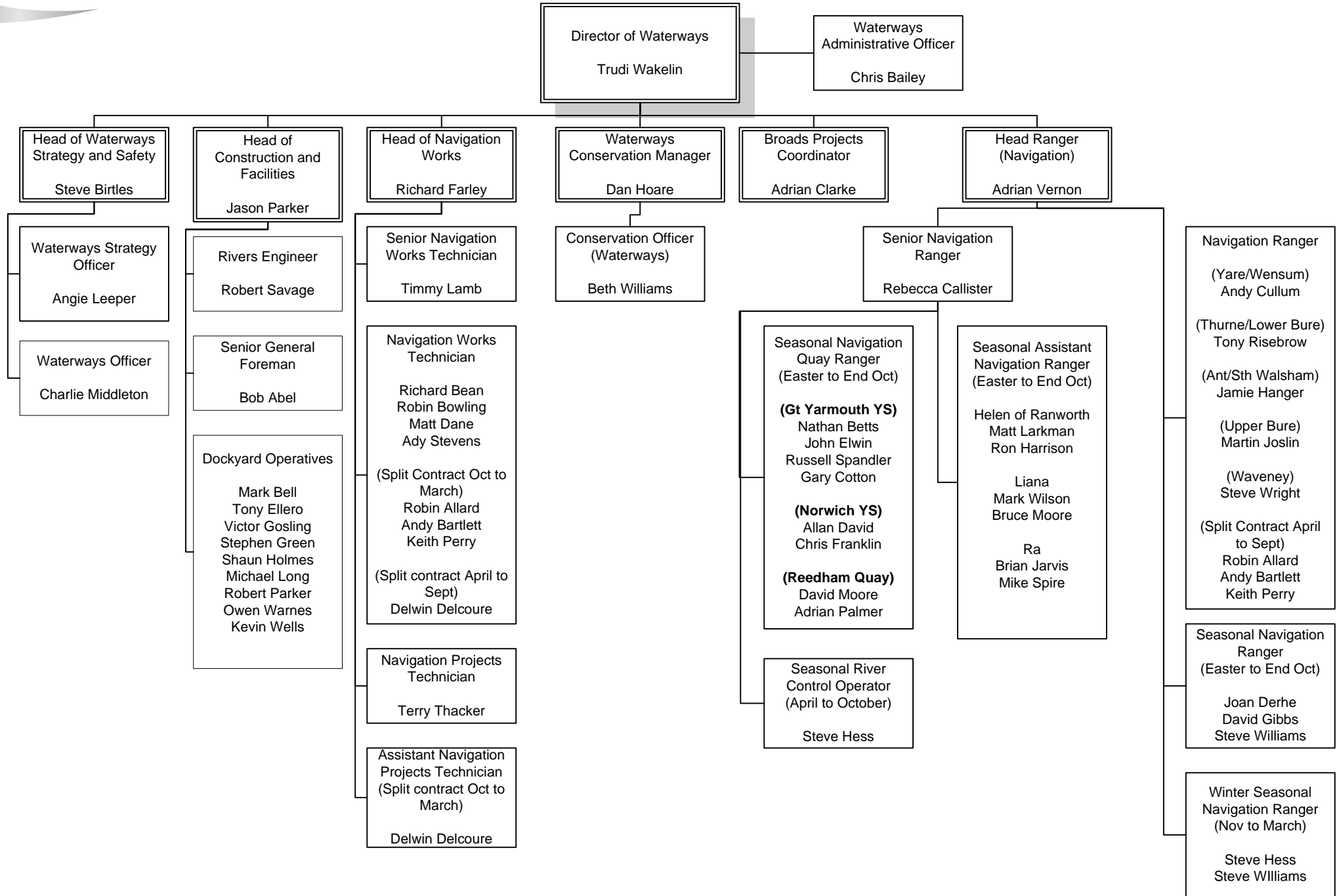
Filby Warden
Lesley Johnson

Trinity Broads Hydrological Research Asst (Nov to March)
(post frozen)

Hydrological Assistant
Holly Berwick (Temp until July 09)

Catchment Officer (Trinity Broads & Lound)
Robert Holland

Waterways



Planning & Strategy

