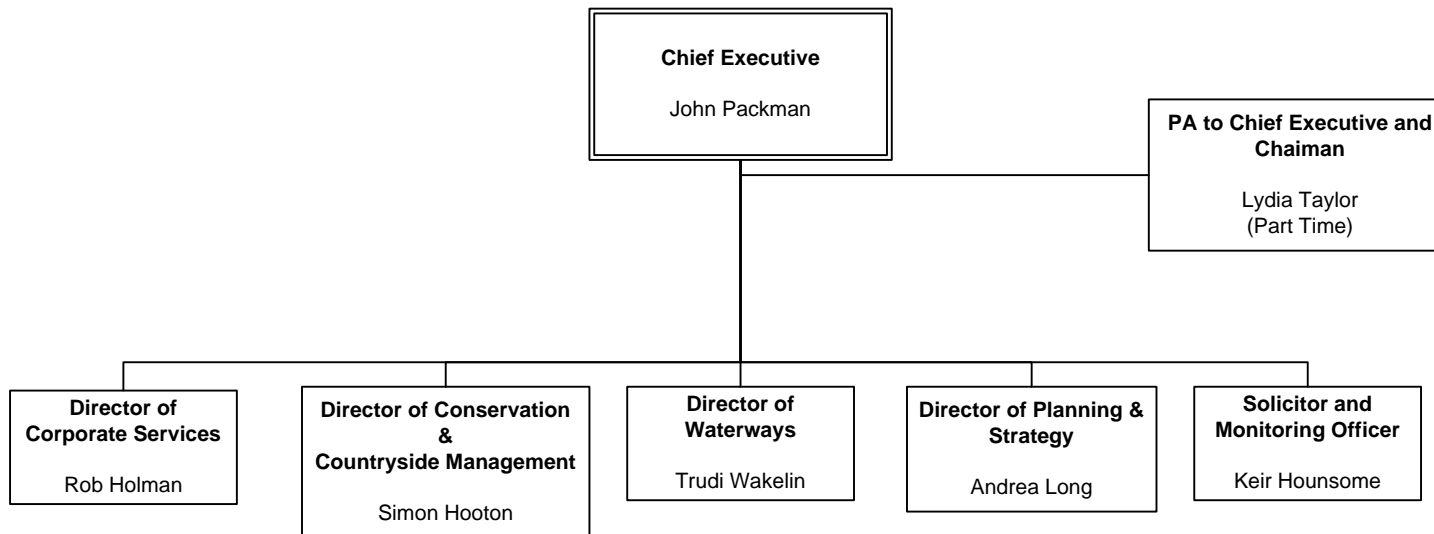
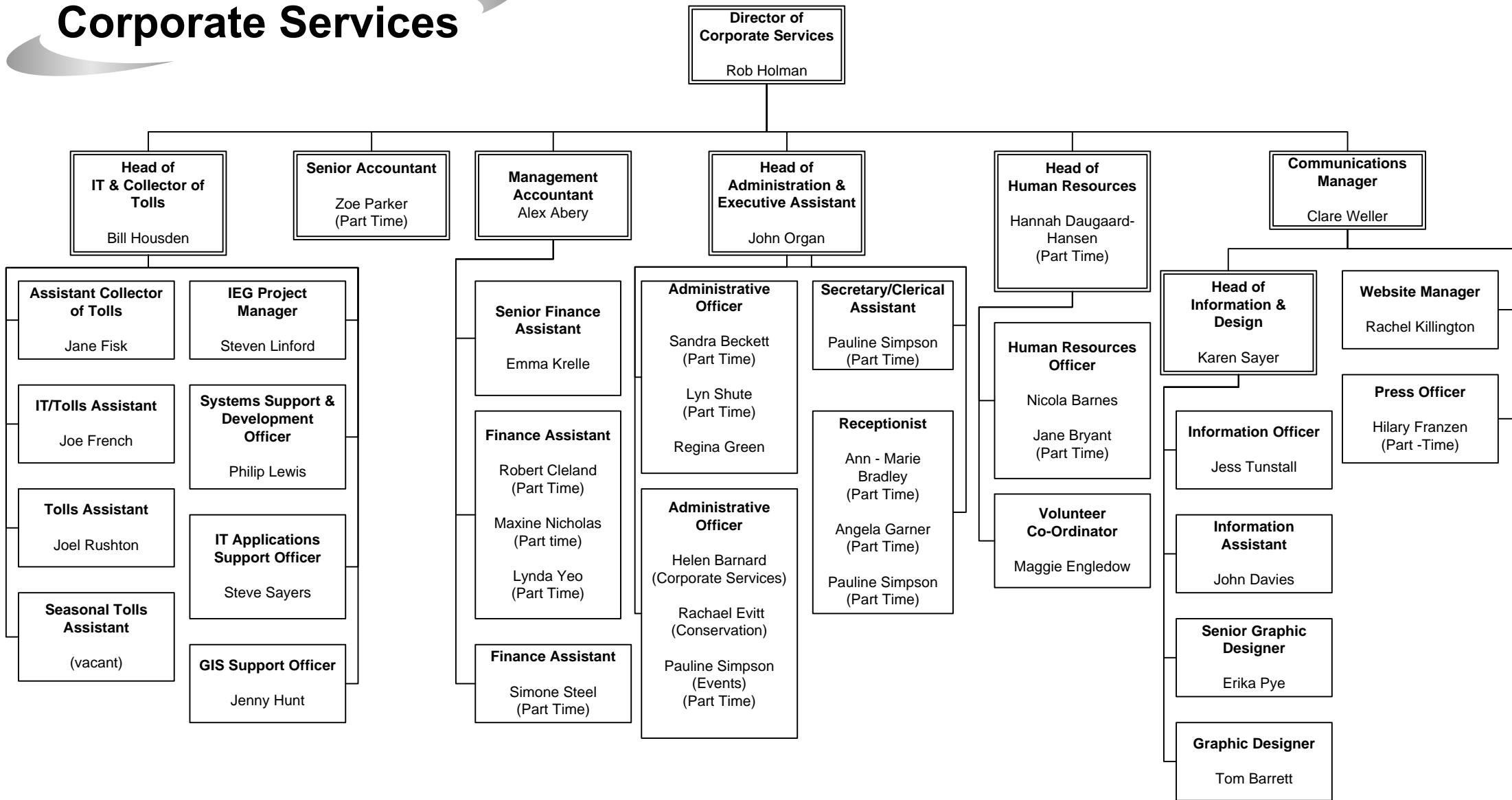


Management Team



Corporate Services



Conservation and Countryside Management

Director of Conservation & Countryside Management
Simon Hooton

Secretary/ Administrative Assistant
Jo Eames

Landscape Architect
Lesley Marsden

Head of Valley Management
Lucy Harris

Head of Recreation & Tourism Development
Bruce Hanson

Head of Conservation
Andrea Kelly

HLF Bursary Project Manager
Graham Bayne

Projects Team Supervisor
Ian Walker

Technical Skills Training Officer
Simon Bunting

Senior Projects Technician
Jason Kerr
Mark Rudrum

Projects Technician (Volunteers)
James Watts

Projects Technician
Glen Owen
Shaun Taylor

Head Countryside Ranger (Yare)
Nick Sanderson
responsible for
Countryside Estate Ranger (Volunteers)
Malcolm Farrow

Seasonal Countryside Assistant (Mowing)
Michael Brown
Jim Hunt

Winter Seasonal Countryside Assistant
Matt Larkman

Countryside Ranger (Waveney)
Colin Hart

Countryside Ranger (Bure)
Elaina Slark
responsible for

Bure Valley Seasonal Ranger
Matt Larkman

Countryside Ranger (Ant/Thurne)
Eilish Rothney
responsible for

Seasonal Countryside Asst (Ant/Thurne)
Bob Hindley

Manager - Whitlingham Broads
Russell Wilson

Whitlingham Countryside Ranger
Paul Bolton

Whitlingham Seasonal Countryside Ranger
Edgar Hoddy

Visitor Services Manager
Sam Bates

Seasonal Information Assistant

(Beccles)
Claire Ross

(Hoveton)
Dawn Coleman
Tina Etheridge
Lydia Tubby

(Potter Heigham)
Rita Benson

(Ranworth)
Sue Allerton
Maureen Brown

(Whitlingham)
Maureen Bird
Albert Ward

Seasonal Information Assistant/Warden (Toad Hole Cottage)

David Anderson
Stephanie Anderson
Paul Gowman
Robin Jeffries
Brendan Russell-Wells

Countryside Events & Broads Strategy Admin Officer
Lottie Carlton
(Part Time)

Broadcaster Delivery
Derek Mackey

Conservation Officer (Fen Strategy)
Sue Stephenson
(Part-time)

Conservation Officer
Sally Lucas
Erica Murray

Field Conservation Manager
Rob Andrews

Field Officers (Volunteers)
Phil Heath
Graham Hewitt

Field Officer (Machinery Operator & Maintenance)
David Marsham

Field Officer (Operations Coordinator)
Trevor Thorley

Field Officer (Harvester Operator)
Lisa Treadwell
(Part time)

Conservation Officer (Trinity Broads & Lound)
Hannah Gray

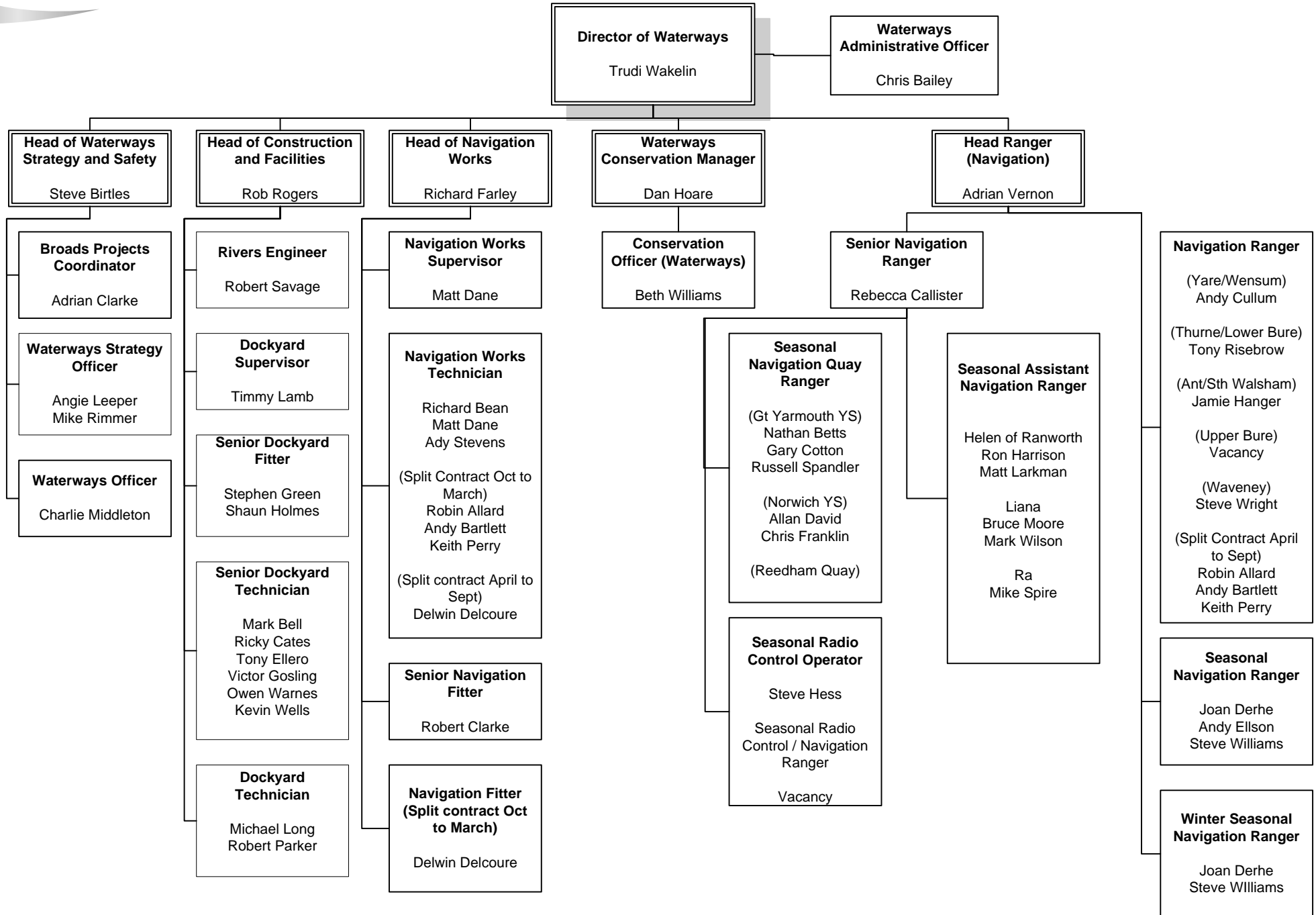
Filby Warden
Lesley Johnson

Trinity Broads Hydrological Research Asst (Nov to March)
(post frozen)

Hydrological Assistant
Holly Berwick

Catchment Officer (Trinity Broads & Lound)
Robert Holland

Waterways



Planning & Strategy

