



**Broads Local Plan 2036**  
**NPPF Paragraph 161 Deprivation Topic Paper**  
**January 2016**

1. Introduction

The NPPF at Paragraph 161 requires a Local Plan to consider deprivation:

161. Local planning authorities should use this evidence base to assess:

- locations of deprivation which may benefit from planned remedial action

This Topic Paper discusses the issue of Deprivation as it relates to the Broads Authority Executive Area.

2. The Broads and Lower Layer Super Output Areas (LSOAs)

**LSOAs** (Lower-layer Super Output Areas) are small areas designed to be of a similar population size, with an average of approximately 1,500 residents or 650 households. There are 32,844 Lower-layer Super Output Areas (LSOAs) in England. They were produced by the Office for National Statistics for the reporting of small area statistics.

For each measure, the LSOA with a **rank** of 1 is the most deprived and the LSOA with a rank of 32,844 is the least deprived. The following map and tables (Figure 1) shows the LSOAs that are part or all within the Broads Authority Executive area.

3. Indices of Multiple Deprivation - Maps

Maps later in the document show the parts of the LSOAs in the Broads and uses a traffic light system showing the least deprived as green (the highest ranking) and most deprived as red (lowest ranking).

It is important to note that whilst looking at the maps, not all of the population of the LSOA are entirely within the Broads. Because LSOAs span the boundary of the Broads Authority Executive Area, an assessment was made to ascertain the likely proportion of population of a particular LSOA in the Broads. This is at Appendix A. The maps later in the document only show LSOAs which are likely to have a population in the Broads part of the LSOA. Those assessed as having 0% population in the Broads are white (and so too is Breydon Water). The following tables summarises the data in Appendix A and shows the percentage of the population of a LSOA within the Broads.

Figure 1: LSOAs which are all or part in the Broads Authority Executive Area.

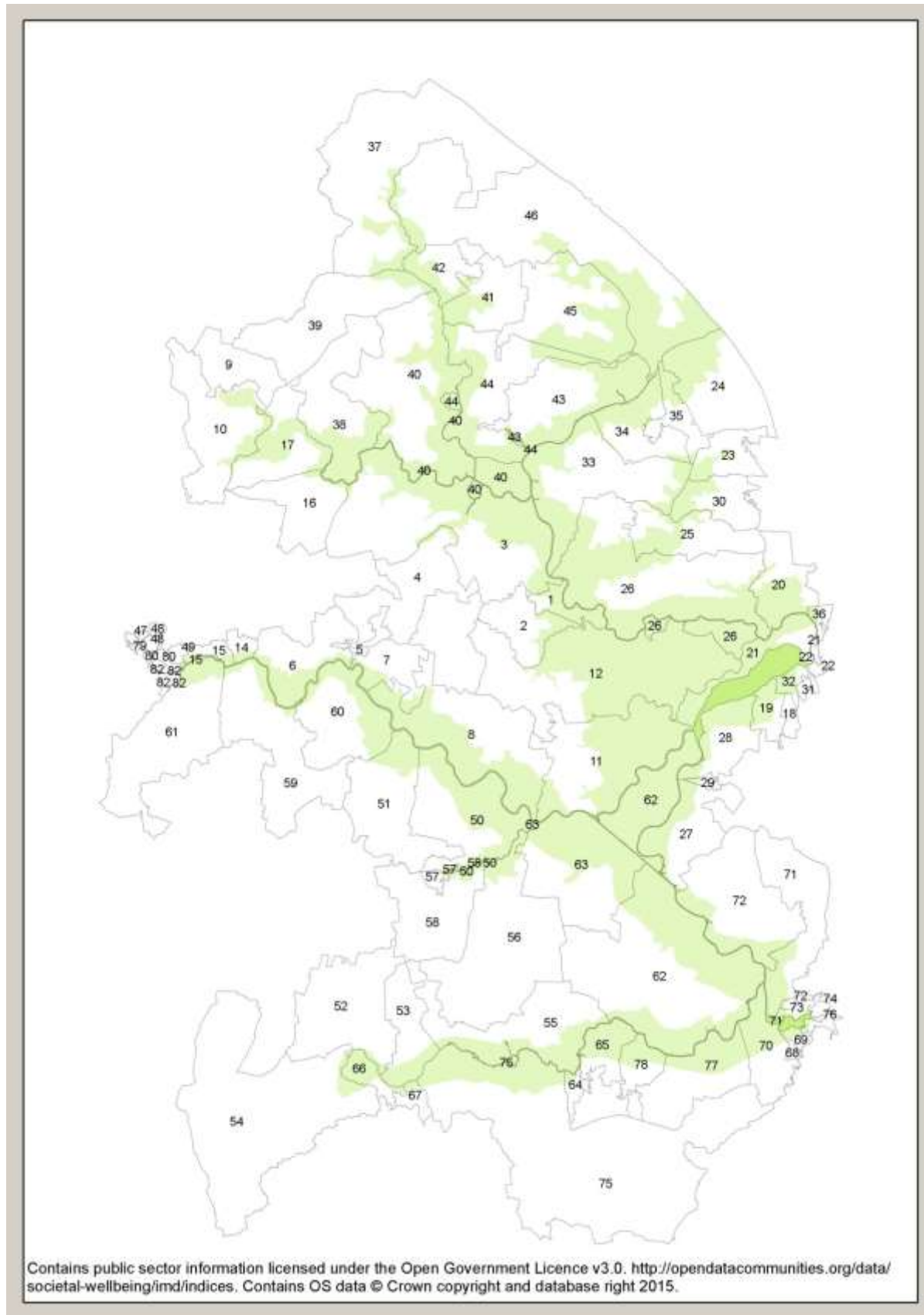


Table 1: This table gives the LSOA reference number for each map reference as well as the estimated percentage of the population of each LSOA within the Broads.

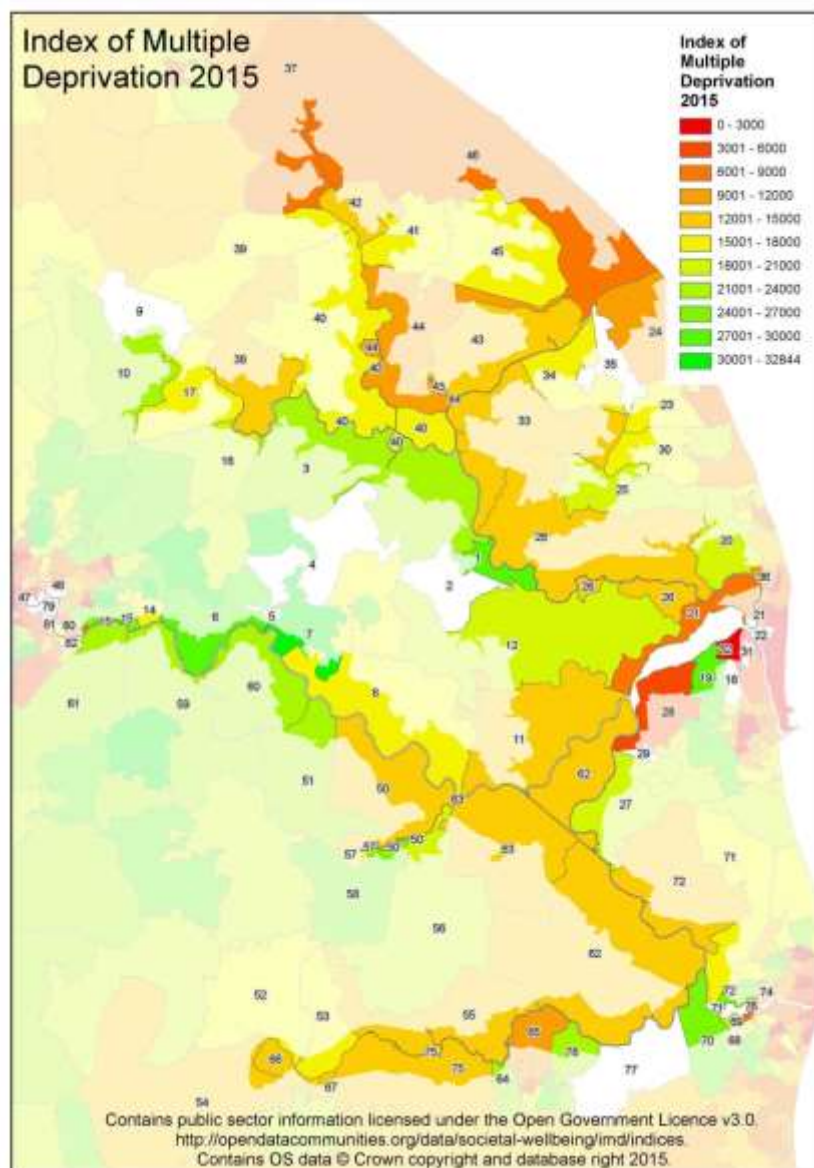
Ref	LSOA11CD	% of LSOA population in the Broads.	Ref	LSOA11CD	% of LSOA population in the Broads.	Ref	LSOA11CD	% of LSOA population in the Broads.	Ref	LSOA11CD	% of LSOA population in the Broads.
1	E01026497	0.90%	22	E01026597	0%	43	E01026783	17.85%	64	E01030224	43.50%
2	E01026498	0%	23	E01026605	0.40%	44	E01026784	28.70%	65	E01030225	11.82%
3	E01026504	5.90%	24	E01026606	13.20%	45	E01026785	3.17%	66	E01030230	25.10%
4	E01026505	0%	25	E01026608	12.30%	46	E01026786	1.72%	67	E01030231	1.35%
5	E01026508	0%	26	E01026609	37.15%	47	E01026823	0%	68	E01030234	0%
6	E01026509	2.12%	27	E01026613	8.57%	48	E01026848	0%	69	E01030235	2.90%
7	E01026510	7.70%	28	E01026614	14.15%	49	E01026849	18.20%	70	E01030237	0.60%
8	E01026511	2.80%	29	E01026616	0%	50	E01026879	22.11%	71	E01030259	26.50%
9	E01026516	0%	30	E01026629	27.80%	51	E01026880	12.10%	72	E01030260	4.11%
10	E01026517	12.40%	31	E01026634	0%	52	E01026892	2.70%	72	E01030268	1.40%
11	E01026538	2.60%	32	E01026635	0.84%	53	E01026893	36.57%	73	E01030269	50.10%
12	E01026539	4.80%	33	E01026636	16.10%	54	E01026894	5.30%	74	E01030270	12.66%
14	E01026575	4.30%	34	E01026637	12.87%	55	E01026898	18.24%	75	E01030286	18.97%
15	E01026577	16.70%	35	E01026638	0%	56	E01026899	4.70%	76	E01030289	23.63%
16	E01026579	2.10%	36	E01026640	11.54%	57	E01026911	6.10%	77	E01030293	0%
17	E01026580	39.80%	37	E01026740	23.41%	58	E01026912	4.07%	78	E01030294	1.10%
18	E01026581	0%	38	E01026744	33.61%	59	E01026929	12.06%	79	E01033438	0%
19	E01026582	3.50%	39	E01026767	22.84%	60	E01026930	3.48%	80	E01033439	0.26%
20	E01026593	26.20%	40	E01026769	33.05%	61	E01026937	5.40%	81	E01033440	0%
21	E01026596	2.30%	41	E01026774	4.36%	62	E01026943	6.30%	82	E01033441	0.42%
			42	E01026776	20.71%	63	E01026944	6.69%			

## 1. Index of Multiple Deprivation

The **Index of Multiple Deprivation** (IMD) is an overall relative measure of deprivation constructed by combining seven domains of deprivation according to their respective weights, as described below.

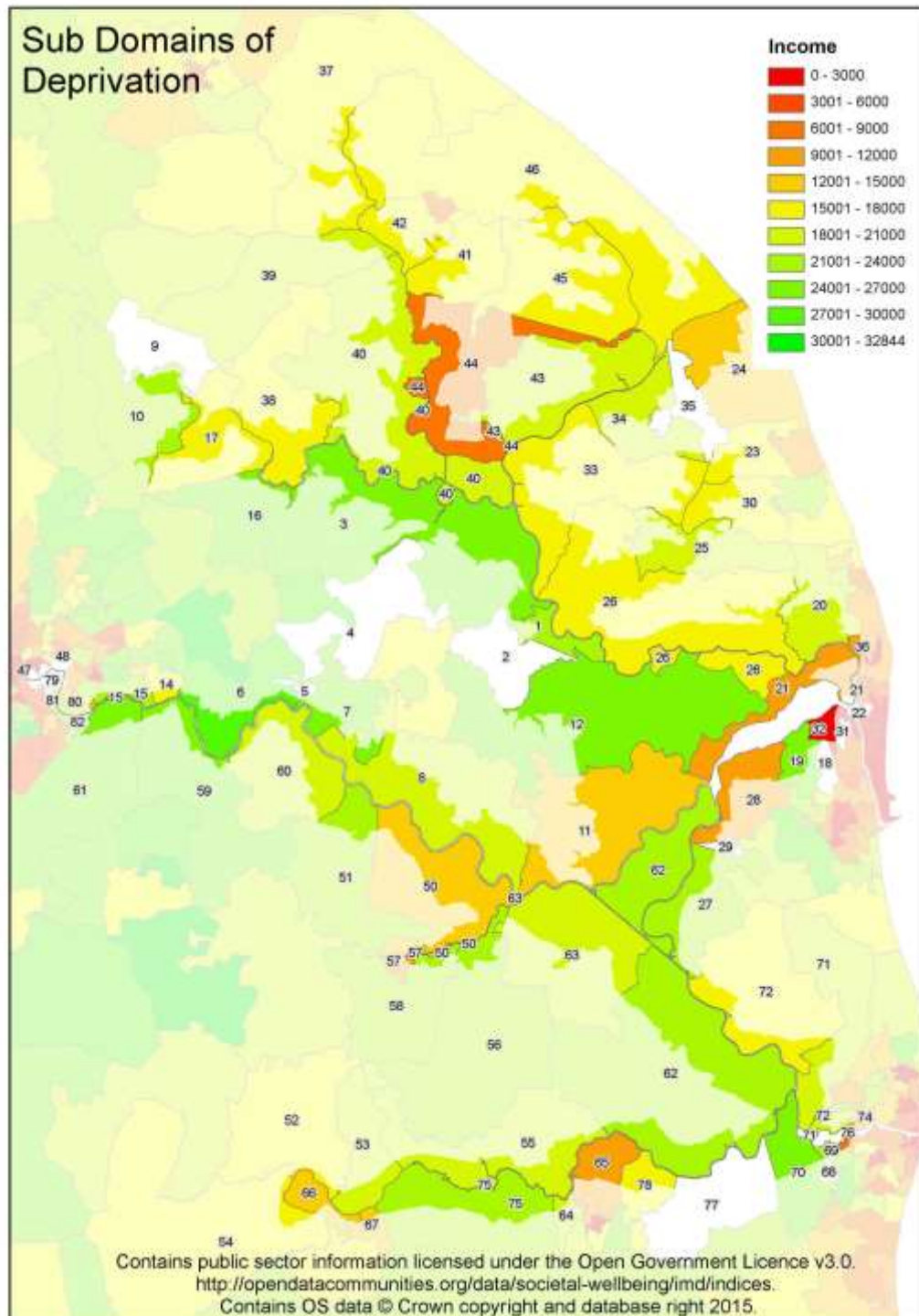
- Income Deprivation (22.5%)
- Employment Deprivation (22.5%)
- Education, Skills and Training Deprivation (13.5%)
- Health Deprivation and Disability (13.5%)
- Crime (9.3%)
- Barriers to Housing and Services (9.3%)
- Living Environment Deprivation (9.3%)

These Domains are also discussed in this document separately.



## 2. The Income Deprivation Domain

The **Income Deprivation** Domain measures the proportion of the population experiencing deprivation relating to low income. The definition of low income used includes both those people that are out-of-work, and those that are in work but who have low earnings (and who satisfy the respective means tests).

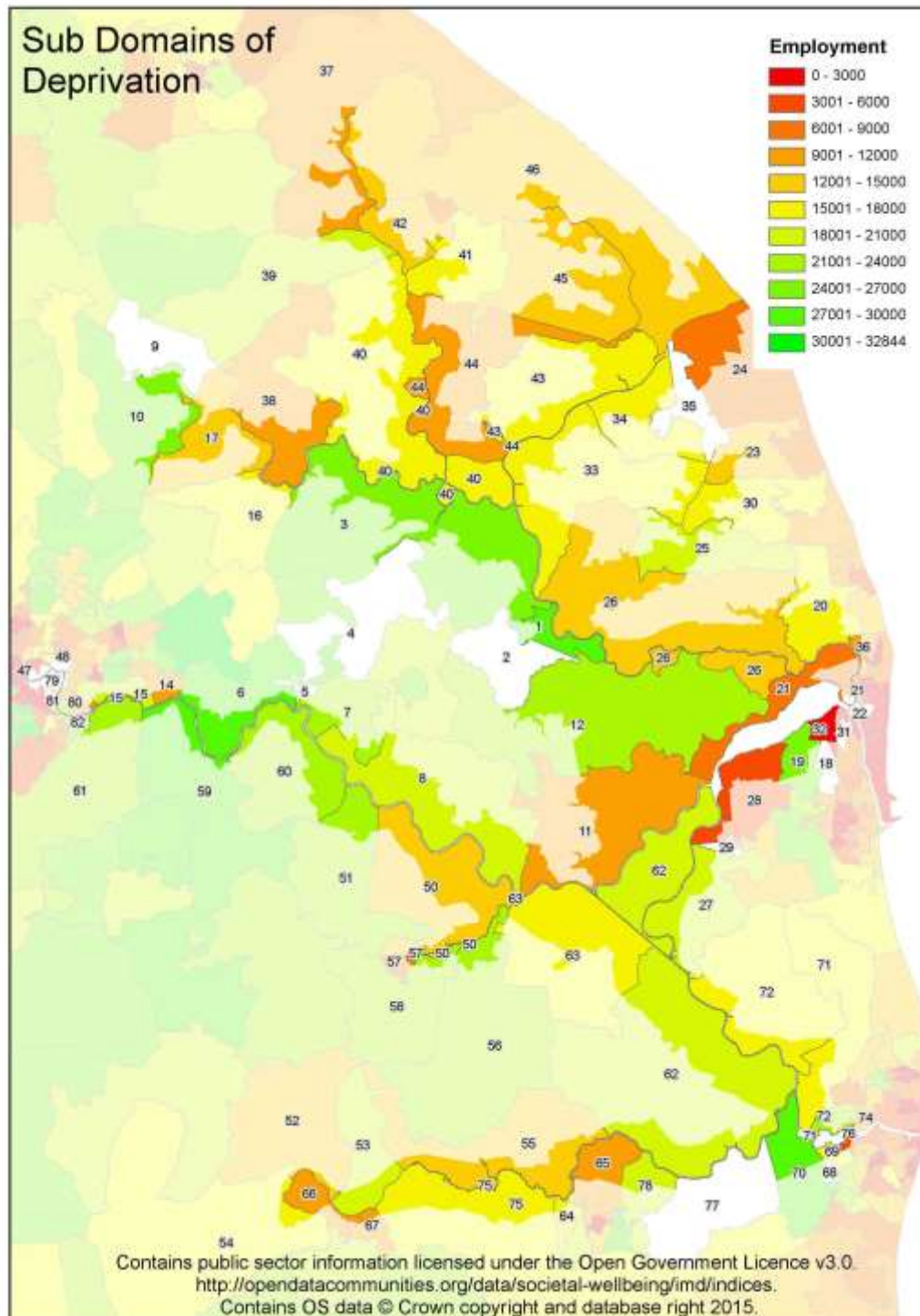


As a whole, income deprivation is generally low. There are some pockets where the deprivation levels are high with the highest area of deprivation (so the red colour and lowest ranking) being near Great Yarmouth.



### 3. The Employment Deprivation Domain

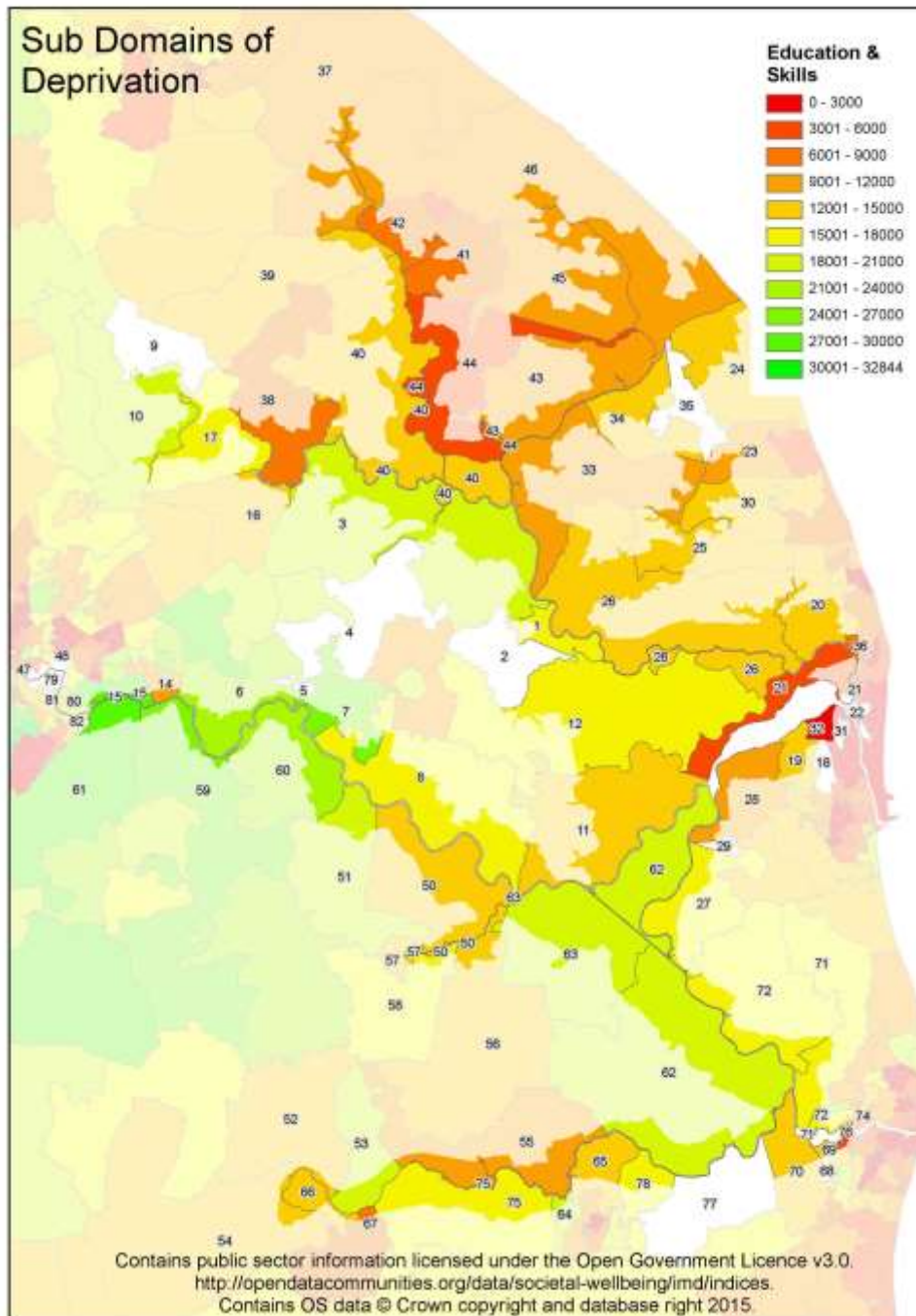
The **Employment Deprivation** Domain measures the proportion of the working-age population in an area involuntarily excluded from the labour market. This includes people who would like to work but are unable to do so due to unemployment, sickness or disability, or caring responsibilities.



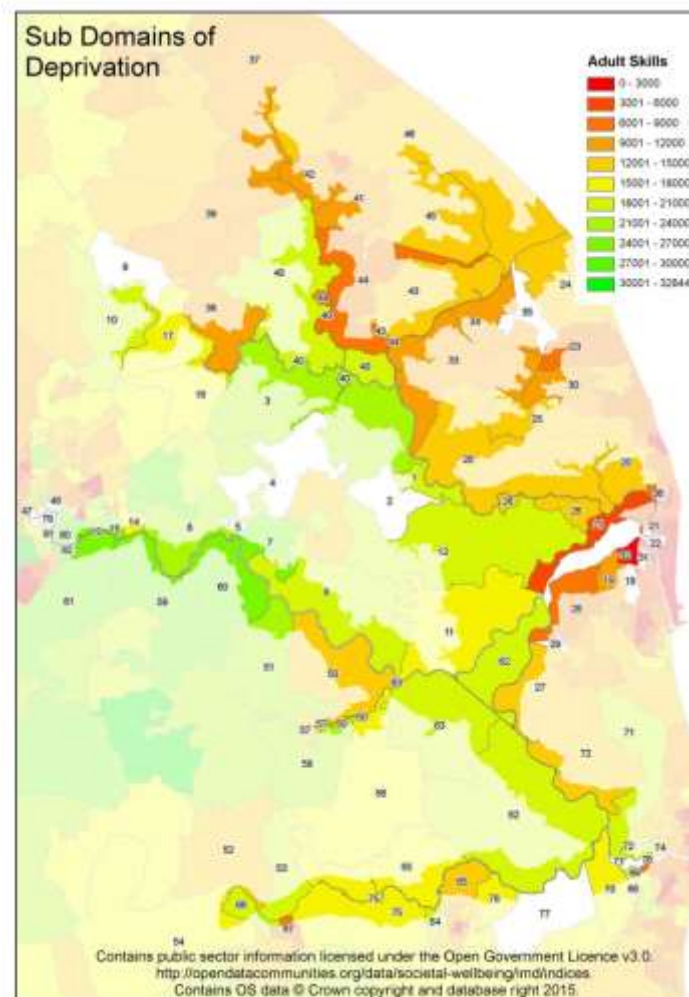
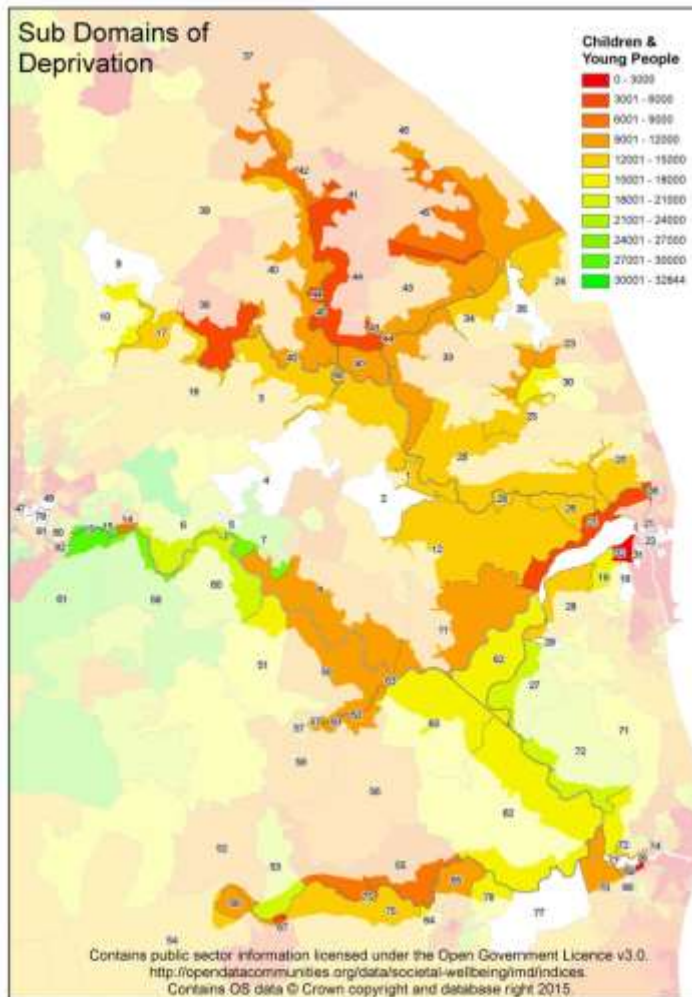
Employment deprivation sees red areas around Great Yarmouth and Burgh Castle as well as a small pocket of red in Oulton Broad.

#### 4. The Education, Skills and Training Deprivation Domain

The **Education, Skills and Training Deprivation Domain** measures the lack of attainment and skills in the local population. The indicators fall into two sub-domains: one relating to children and young people and one relating to adult skills.



The **Education, Skills and Training Deprivation Domain** measures the lack of attainment and skills in the local population. The indicators fall into two sub-domains: one relating to children and young people and one relating to adult skills. These two sub-domains are designed to reflect the ‘flow’ and ‘stock’ of educational disadvantage within an area respectively. That is, the **Children and Young People Sub-domain** measures the attainment of qualifications and associated measures (‘flow’), while the **Adult Skills Sub-domain** measures the lack of qualifications in the resident working-age adult population (‘stock’).

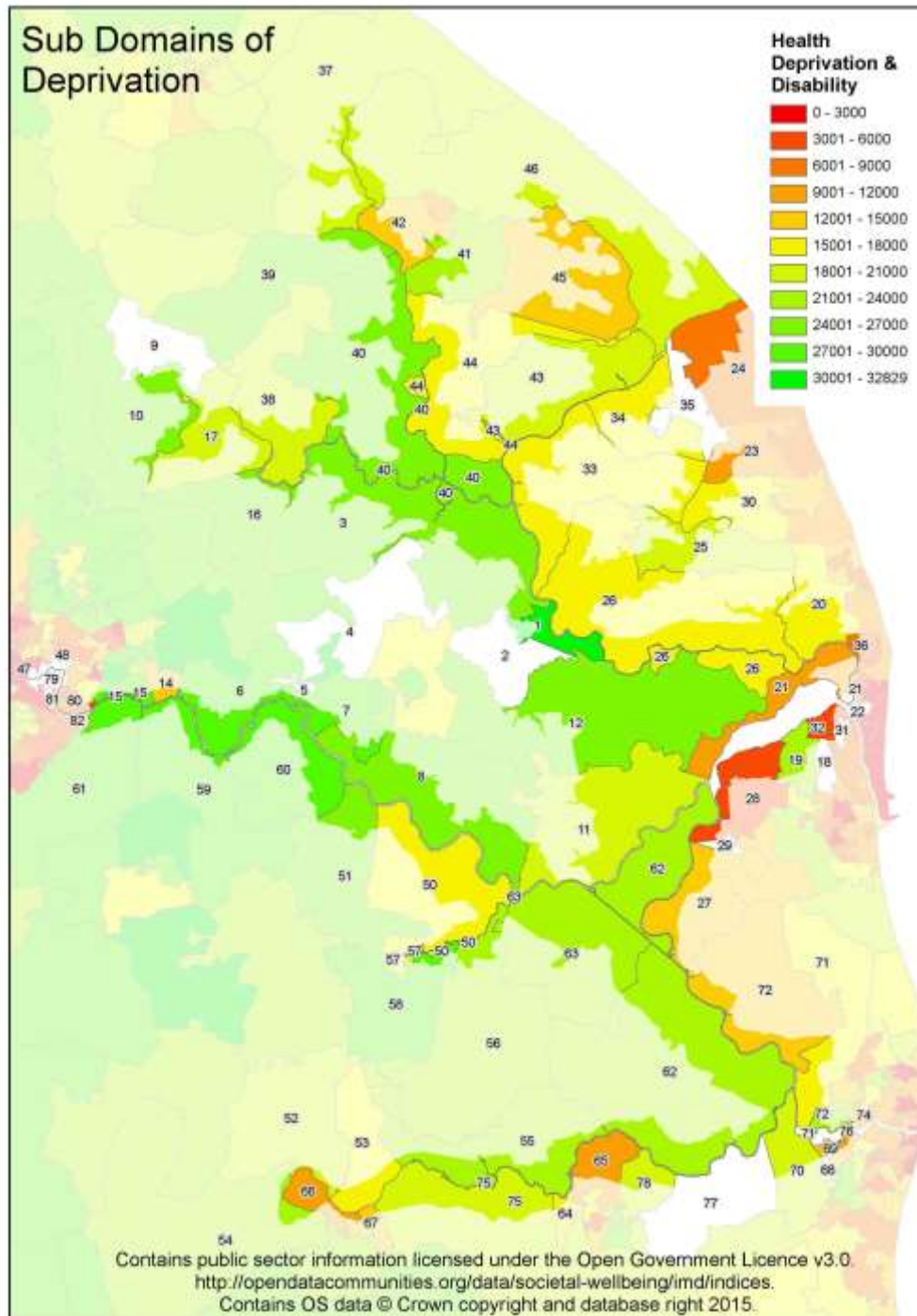


The map on the left shows the children and young people sub-domain. The map is generally orange suggesting the area is towards the more deprived in relation to qualifications attainment of children. Whereas for adults, the map is greener in general so towards the least deprived. Two red pockets are shown on both maps around the Great Yarmouth and north of Breydon Water area.



### 5. The Health Deprivation and Disability Domain

The **Health Deprivation and Disability** Domain measures the risk of premature death and the impairment of quality of life through poor physical or mental health. The domain measures morbidity, disability and premature mortality but not aspects of behaviour or environment that may be predictive of future health deprivation.

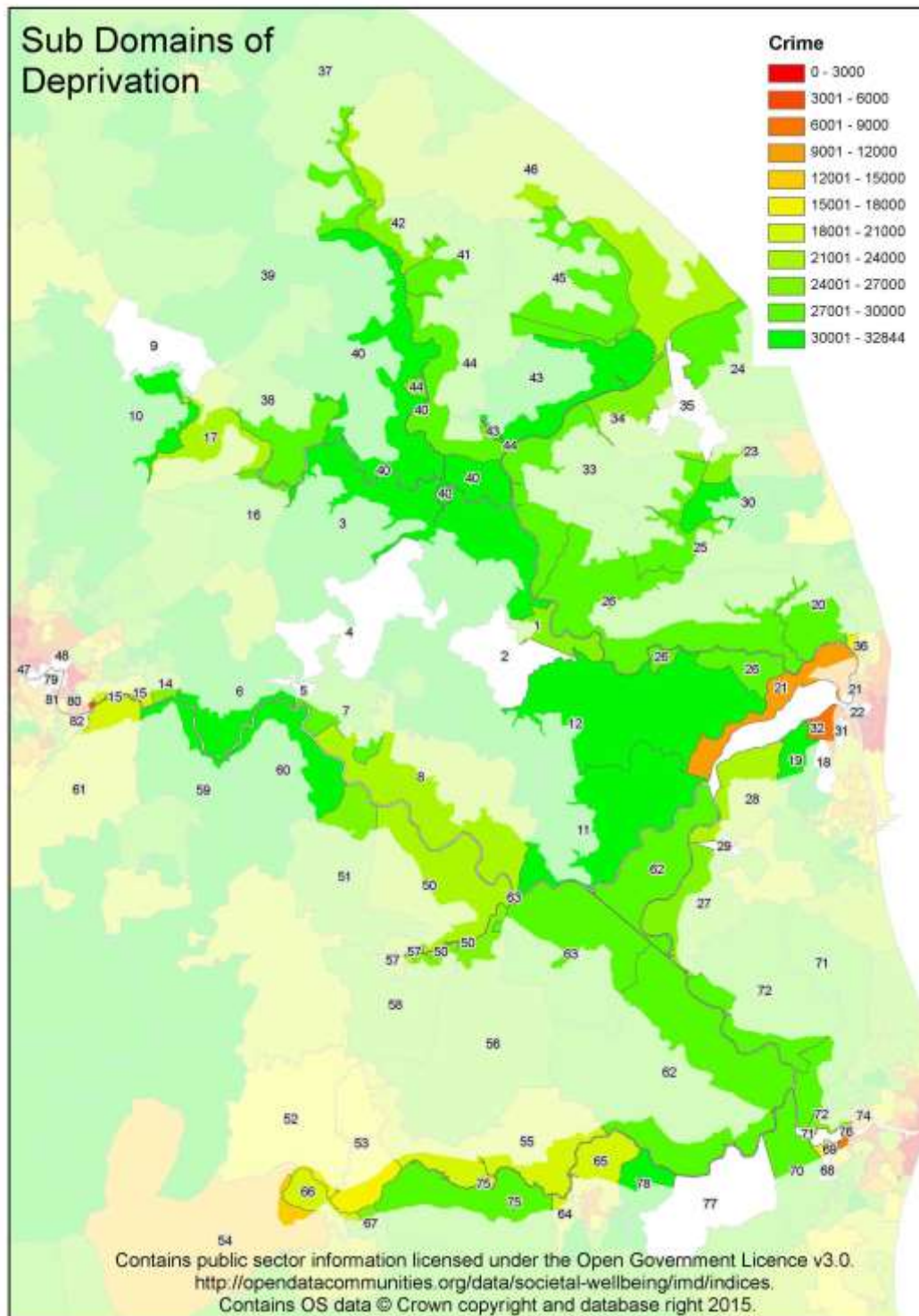


The maps shows that health deprivation is generally towards the least deprived, although there are some darker colours showing more deprivation in some isolated pockets.



## 6. The Crime Domain

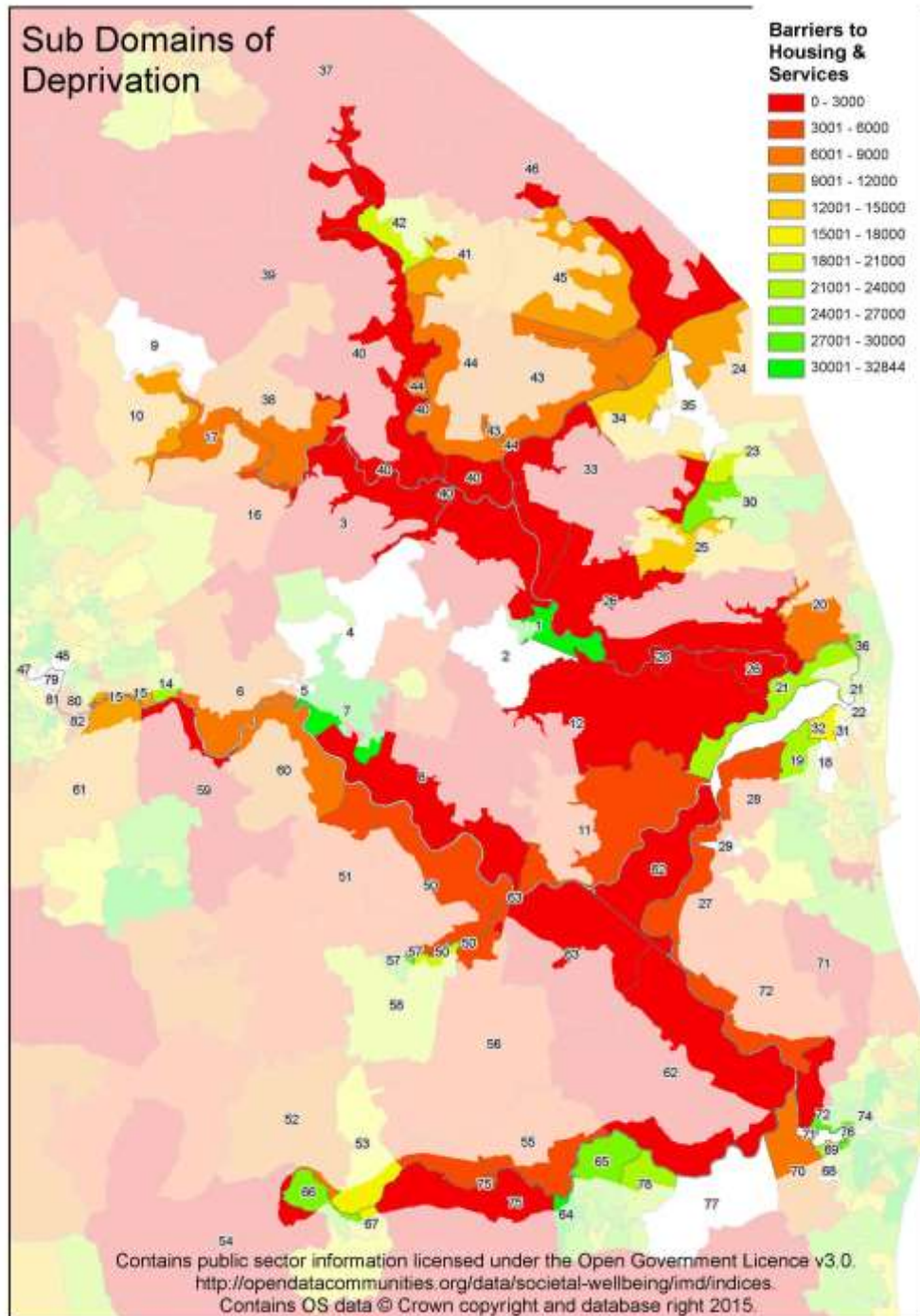
The **Crime** Domain measures the risk of personal and material victimisation at local level.



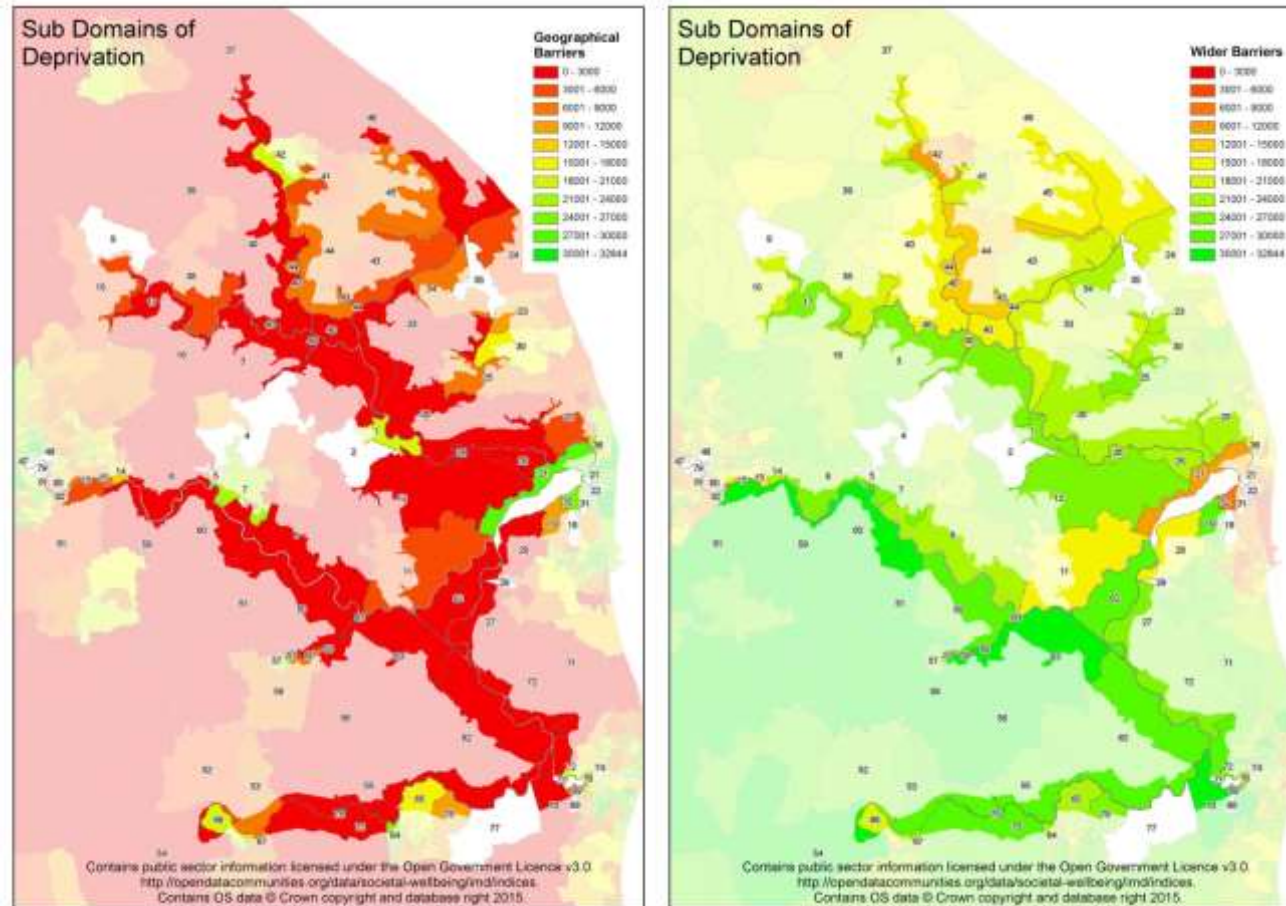
Generally in terms of crime deprivation, the Broads Authority Executive Area is least deprived, shown by the green on the map. There are some areas around Great Yarmouth and Breydon Water which are darker in colour.

## 7. The Barriers to Housing and Services Domain

The **Barriers to Housing and Services Domain** measures the physical and financial accessibility of housing and local services. The indicators fall into two sub-domains: 'geographical barriers', which relate to the physical proximity of local services, and 'wider barriers' which includes issues relating to access to housing such as affordability.



The **Barriers to Housing and Services Domain** measures the physical and financial accessibility of housing and local services. The indicators fall into two sub-domains: the **Geographical Barriers Sub-domain**, which relates to the physical proximity of local services and the **Wider Barriers Sub-domain** which includes issues relating to access to housing such as affordability.

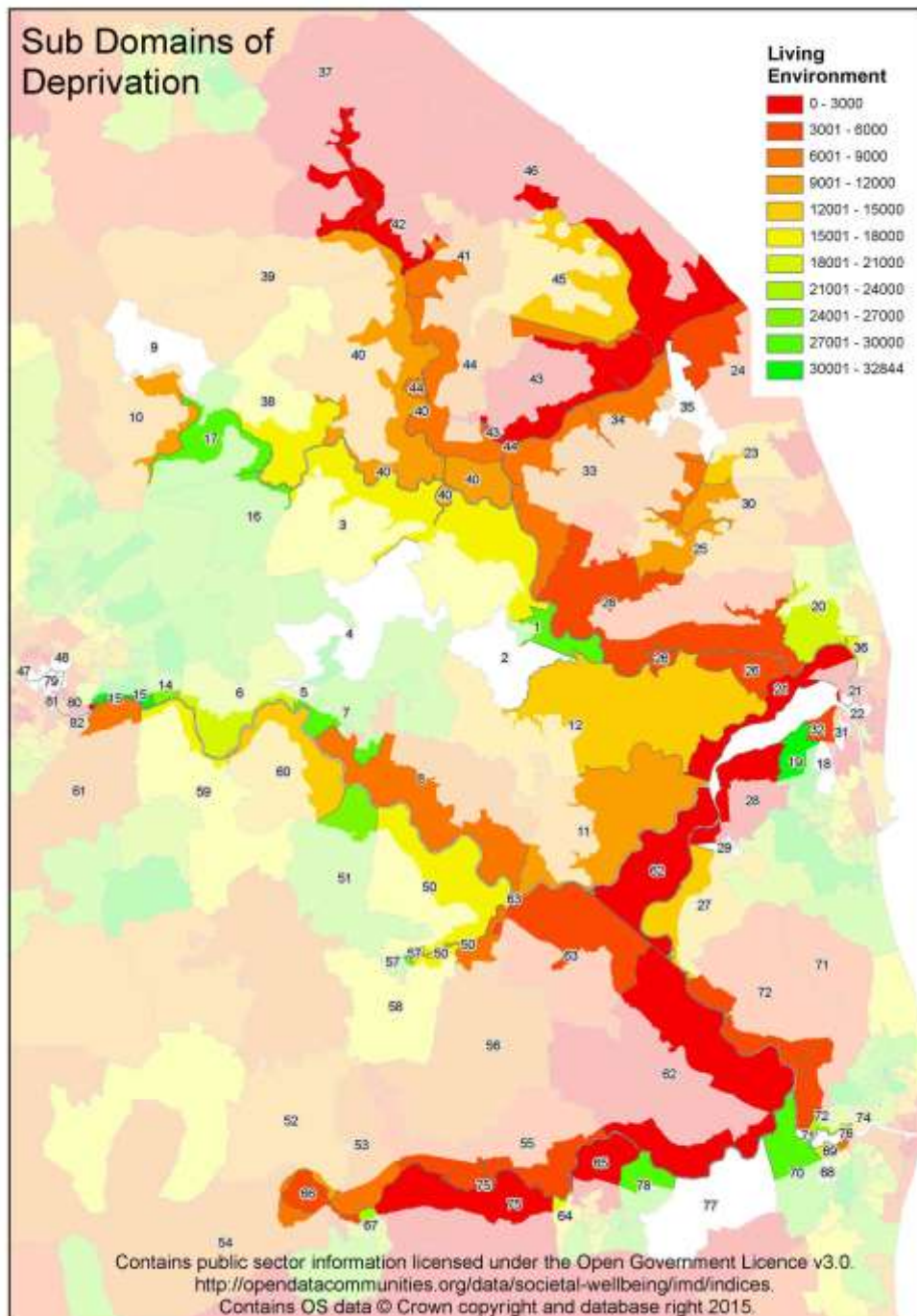


The map on the left shows Geographical Barriers to local services. This shows that the Broads is quite deprived. This could reflect the rural nature of the area with urban areas being lighter in colour. The map on the right show wider barriers such as access to housing and affordability. The Broads is towards the green end of the spectrum showing that in general it is least deprived.

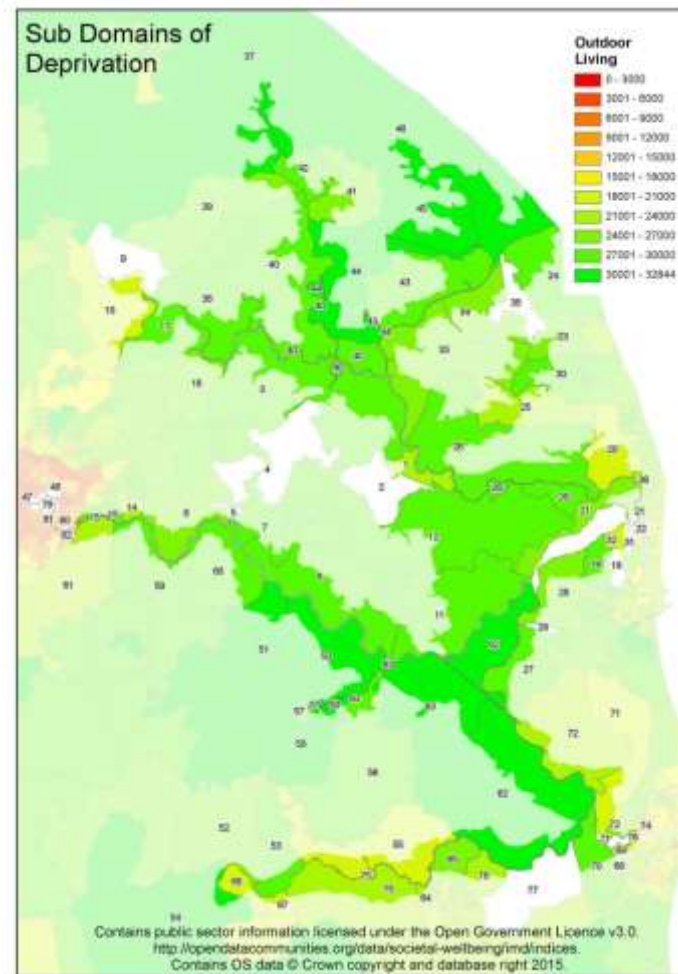
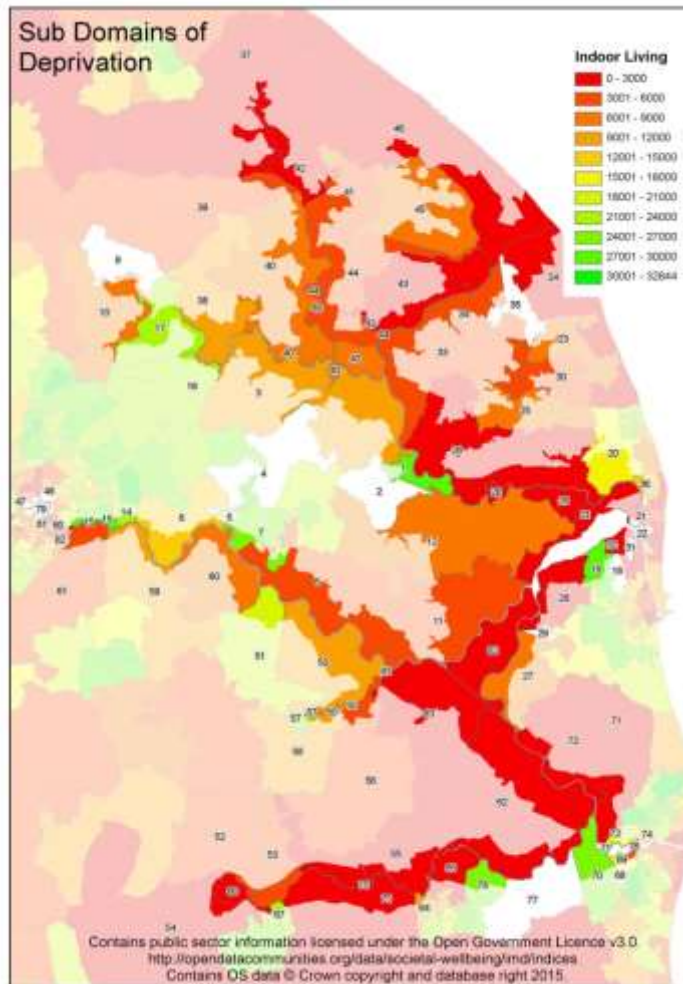


## 8. The Living Environment Deprivation Domain

The **Living Environment Deprivation** Domain measures the quality of the local environment. The indicators fall into two sub-domains. The 'indoors' living environment measures the quality of housing; while the 'outdoors' living environment contains measures of air quality and road traffic accidents.



The **Living Environment Deprivation Domain** measures the quality of the local environment. The indicators fall into two sub-domains. The **Indoors Sub-domain** measures the quality of housing; while the **Outdoors Sub-domain** contains measures of air quality and road traffic accidents.



The map on the left shows indoors subdomain. This seems to paint a picture that housing quality in the Broads overall is quite poor (notwithstanding pockets of green). Whereas the map on the right, which shows outdoors subdomain, shows the entire area of the Broads as being amongst the least deprived in the country.

## Conclusion

The Government requires deprivation to be considered as Local Plans are produced. This report shows the 2015 deprivation domain and sub-domains using a traffic lights system on maps. The results are mixed with the Broads Authority Executive Area being least deprived in relation to crime and health but is more deprived in relation to indoor living and geographical barriers domains.

The following table discusses the findings and indicates how the Local Plan can seek to address the domains.

<b>Domain or Sub-domain</b>	<b>Action in the Local Plan</b>
Income Deprivation Domain	The Local Plan will have an Economy section as well as a section on Tourism which relate to employment and could positively affect this domain.
Employment Deprivation Domain	
Children and Young People Sub-domain	The education authorities do not require the Local Plan to enable schools or school extensions.
Adult Skills Sub-domain	The economy and employment sections of the Local Plan could be of relevance, but no specific actions relating to adult skills are proposed within the Local Plan.
Health Domain	No specific health requirements are set on the Local Plan. The Local Plan will have a section on health and planning with the aim of enabling healthy lifestyles.
Crime Domain	As the area is least deprived on this topic, other than general design policies, no specific action is required.
Geographical Barriers Sub-domain	The Local Plan will have a policy on pubs. There is no education or health requirement set on the Local Plan. The Local Plan will seek to protect the retail areas within the Broads.
Wider Barriers Sub-domain	The Local Plan will address housing need and have a policy on affordable housing.
Indoors Sub-domain	The Local Plan will have policies that enable improvements or changes to dwellings which could positively affect this domain.
Outdoors Sub-domain	No specific action required.

In most cases LSOAs are part in the Broads and part outside of the Broads, so in planning terms, it will be for other Local Planning Authorities to consider actions to benefit the communities in the LSOAs as well as the Broads Authority through the actions stated in the table above.

It is also important to note that the Broads Authority does not exercise functions which Councils do, such as community, education and housing functions. So there is a role for the District and County Councils in addressing deprivation. Furthermore, other partners have a responsibility for and expertise in addressing other domains such as CCGs and NHS England in relation to health or the Local Enterprise Partnership in relation to employment. Addressing deprivation needs a collaborative approach.



Appendix A: The estimated population of the Broads in each LSOA

LSOA11CD	OA11CD	District	Dwelling Count within BA (calculated using GIS in April 2015)	Total Dwelling Count OA (calculated using GIS in April 2015)	% within BA	Total OA population from Census 2011	Population in the Broads part of the OA (Calculated by applying BA Av Household Size of 1.74 to dwelling count within BA (column D))	% of OA population in the Broads (using figures in column H as a percentage of the total OA population from Census 2011 (column G))	% of LSOA population in the Broads. (calculated by dividing column H by G, but adding all the OA in that LSOA)
E01026497	E00134648	Broadland	0	141	0.00	297	0.0	0.0	0.90%
	E00134652	Broadland	0	141	0.00	249	0.0	0.0	
	E00134653	Broadland	6	140	4.29	320	10.4	3.3	
	E00134654	Broadland	0	138	0.00	295	0.0	0.0	
E01026498	E00134649	Broadland	0	126	0.00	289	0.0	0.0	0%
	E00134655	Broadland	0	86	0.00	212	0.0	0.0	
	E00134656	Broadland	0	131	0.00	295	0.0	0.0	
E01026504	E00134697	Broadland	11	179	6.15	431	19.1	4.4	5.90%
	E00134699	Broadland	8	153	5.23	350	13.9	4.0	
	E00134700	Broadland	4	156	2.56	352	7.0	2.0	
	E00134701	Broadland	29	175	16.57	399	50.5	12.6	
E01026505	E00134698	Broadland	0	178	0.00	414	0.0	0.0	0%
E01026508	E00134705	Broadland	0	140	0.00	340	0.0	0.0	0%
E01026509	E00134702	Broadland	3	139	2.16	308	5.2	1.7	2.12%
	E00134714	Broadland	0	130	0.00	275	0.0	0.0	
	E00134718	Broadland	9	167	5.39	404	15.7	3.9	
E01026510	E00134706	Broadland	53	208	25.48	450	92.2	20.5	7.70%
	E00134707	Broadland	0	135	0.00	270	0.0	0.0	
	E00134708	Broadland	0	150	0.00	324	0.0	0.0	
	E00134719	Broadland	3	100	3.00	226	5.2	2.3	
E01026511	E00134715	Broadland	29	95	30.53	229	50.5	22.0	2.80%
	E00134716	Broadland	0	99	0.00	228	0.0	0.0	
	E00134717	Broadland	22	128	17.19	276	38.3	13.9	
	E00134720	Broadland	11	99	11.11	227	19.1	8.4	
E01026516	E00134744	Broadland	0	131	0.00	311	0.0	0.0	0%
E01026517	E00134739	Broadland	56	117	47.86	232	97.4	42.0	12.40%
	E00134741	Broadland	17	115	14.78	252	29.6	11.7	
	E00134747	Broadland	1	175	0.57	404	1.7	0.4	
	E00134748	Broadland	3	128	2.34	191	5.2	2.7	
E01026538	E00134851	Broadland	18	170	10.59	361	31.3	8.7	2.60%
	E00134856	Broadland	61	172	35.47	409	106.1	26.0	
	E00134857	Broadland	0	157	0.00	339	0.0	0.0	
	E00134858	Broadland	2	224	0.89	459	3.5	0.8	
E01026539	E00134850	Broadland	2	191	1.05	436	3.5	0.8	4.80%
	E00134854	Broadland	0	128	0.00	291	0.0	0.0	
	E00134855	Broadland	27	145	18.62	316	47.0	14.9	
E01026575	E00135039	Broadland	13	210	6.19	286	22.6	7.9	4.30%
	E00169823	Broadland	0	109	0.00	244	0.0	0.0	
E01026577	E00135028	Broadland	8	202	3.96	363	13.9	3.8	16.70%
	E00135041	Broadland	0	137	0.00	285	0.0	0.0	
	E00135042	Broadland	94	215	43.72	415	163.6	39.4	
E01026579	E00135057	Broadland	2	60	3.33	163	3.5	2.1	2.10%
E01026580	E00135058	Broadland	40	62	64.52	134	69.6	51.9	39.80%
	E00135059	Broadland	54	111	48.65	231	94.0	40.7	
	E00135060	Broadland	42	116	36.21	230	73.1	31.8	
E01026581	E00135067	Great Yarmouth	0	124	0.00	275	0.0	0.0	0%
E01026582	E00135084	Great Yarmouth	6	121	4.96	297	10.4	3.5	3.50%
E01026593	E00135140	Great Yarmouth	41	81	50.62	272	71.3	26.2	26.20%
E01026596	E00135159	Great Yarmouth	4	154	2.60	307	7.0	2.3	2.30%
E01026597	E00135146	Great Yarmouth	0	154	0.00	175	0.0	0.0	0%

<b>LSOA11CD</b>	<b>OA11CD</b>	<b>District</b>	<b>Dwelling Count within BA</b> (calculated using GIS in April 2015)	<b>Total Dwelling Count OA</b> (calculated using GIS in April 2015)	<b>% within BA</b>	<b>Total OA population from Census 2011</b>	<b>Population in the Broads part of the OA</b> (Calculated by applying BA Av Household Size of 1.74 to dwelling count within BA (column D))	<b>% of OA population in the Broads</b> (using figures in column H as a percentage of the total OA population from Census 2011 (column G))	<b>% of LSOA population in the Broads.</b> (calculated by dividing column H by G, but adding all the OA in that LSOA)
E01026605	E00135198	Great Yarmouth	1	134	0.75	436	1.7	0.4	0.40%
E01026606	E00135205	Great Yarmouth	61	106	57.55	247	106.1	43.0	13.20%
	E00135208	Great Yarmouth	0	160	0.00	289	0.0	0.0	
	E00135209	Great Yarmouth	0	135	0.00	267	0.0	0.0	
E01026608	E00135211	Great Yarmouth	0	170	0.00	308	0.0	0.0	12.30%
	E00135212	Great Yarmouth	55	157	35.03	407	95.7	23.5	
	E00135214	Great Yarmouth	19	112	16.96	358	33.1	9.2	
	E00135215	Great Yarmouth	18	139	12.95	226	31.3	13.9	
E01026609	E00135216	Great Yarmouth	24	87	27.59	266	41.8	15.7	37.15%
	E00135217	Great Yarmouth	52	160	32.50	194	90.5	46.6	
	E00135218	Great Yarmouth	104	143	72.73	383	181.0	47.2	
E01026613	E00135240	Great Yarmouth	0	107	0.00	330	0.0	0.0	8.57%
	E00135251	Great Yarmouth	11	158	6.96	260	19.1	7.4	
	E00135252	Great Yarmouth	30	119	25.21	242	52.2	21.6	
E01026614	E00135243	Great Yarmouth	0	126	0.00	249	0.0	0.0	14.15%
	E00135248	Great Yarmouth	12	141	8.51	352	20.9	5.9	
	E00135250	Great Yarmouth	50	138	36.23	283	87.0	30.7	
	E00169839	Great Yarmouth	32	229	13.97	272	55.7	20.5	
E01026616	E00135247	Great Yarmouth	0	147	0.00	304	0.0	0.0	0%
E01026629	E00135319	Great Yarmouth	45	124	36.29	282	78.3	27.8	27.80%
E01026634	E00135340	Great Yarmouth	0	130	0.00	365	0.0	0.0	0%
E01026635	E00135337	Great Yarmouth	0	160	0.00	302	0.0	0.0	0.84%
	E00135347	Great Yarmouth	0	140	0.00	336	0.0	0.0	
	E00169836	Great Yarmouth	4	158	2.53	192	7.0	3.6	
E01026636	E00135364	Great Yarmouth	82	234	35.04	554	142.7	25.8	16.10%
	E00135365	Great Yarmouth	0	124	0.00	391	0.0	0.0	
	E00135366	Great Yarmouth	9	160	5.63	295	15.7	5.3	
	E00135367	Great Yarmouth	27	138	19.57	336	47.0	14.0	
	E00135368	Great Yarmouth	57	93	61.29	315	99.2	31.5	
E01026637	E00135353	Great Yarmouth	0	146	0.00	260	0.0	0.0	12.87%
	E00135355	Great Yarmouth	59	90	65.56	332	102.7	30.9	
	E00135360	Great Yarmouth	0	262	0.00	206	0.0	0.0	

<b>LSOA11CD</b>	<b>OA11CD</b>	<b>District</b>	<b>Dwelling Count within BA</b> (calculated using GIS in April 2015)	<b>Total Dwelling Count OA</b> (calculated using GIS in April 2015)	<b>% within BA</b>	<b>Total OA population from Census 2011</b>	<b>Population in the Broads part of the OA</b> (Calculated by applying BA Av Household Size of 1.74 to dwelling count within BA (column D))	<b>% of OA population in the Broads</b> (using figures in column H as a percentage of the total OA population from Census 2011 (column G))	<b>% of LSOA population in the Broads.</b> (calculated by dividing column H by G, but adding all the OA in that LSOA)
E01026638	E00135357	Great Yarmouth	0	116	0.00	164	0.0	0.0	0%
	E00135358	Great Yarmouth	0	116	0.00	274	0.0	0.0	
E01026640	E00135371	Great Yarmouth	0	129	0.00	212	0.0	0.0	11.54%
	E00135376	Great Yarmouth	26	110	23.64	178	45.2	25.4	
E01026740	E00135938	North Norfolk	66	159	41.51	243	114.8	47.3	23.41%
	E00135944	North Norfolk	1	143	0.70	255	1.7	0.7	
E01026744	E00135969	North Norfolk	59	90	65.56	249	102.7	41.2	33.61%
	E00135970	North Norfolk	6	132	4.55	319	10.4	3.3	
	E00135974	North Norfolk	105	158	66.46	312	182.7	58.6	
E01026767	E00136099	North Norfolk	55	119	46.22	172	95.7	55.6	22.84%
	E00136100	North Norfolk	0	114	0.00	247	0.0	0.0	
E01026769	E00136103	North Norfolk	68	216	31.48	250	118.3	47.3	33.05%
	E00136104	North Norfolk	96	186	51.61	254	167.0	65.8	
	E00136106	North Norfolk	0	134	0.00	255	0.0	0.0	
	E00136107	North Norfolk	93	203	45.81	467	161.8	34.7	
	E00136108	North Norfolk	26	140	18.57	264	45.2	17.1	
E01026774	E00136140	North Norfolk	10	253	3.95	271	17.4	6.4	4.36%
	E00136149	North Norfolk	4	150	2.67	288	7.0	2.4	
E01026776	E00136142	North Norfolk	28	77	36.36	307	48.7	15.9	20.71%
	E00136147	North Norfolk	44	235	18.72	298	76.6	25.7	
E01026783	E00136203	North Norfolk	13	120	10.83	336	22.6	6.7	17.85%
	E00136204	North Norfolk	38	162	23.46	321	66.1	20.6	
	E00136206	North Norfolk	3	96	3.13	297	5.2	1.8	
	E00136207	North Norfolk	77	212	36.32	323	134.0	41.5	
E01026784	E00136195	North Norfolk	17	116	14.66	156	29.6	19.0	28.70%
	E00136202	North Norfolk	49	131	37.40	244	85.3	34.9	
E01026785	E00136198	North Norfolk	6	171	3.51	348	10.4	3.0	3.17%
	E00136199	North Norfolk	6	164	3.66	312	10.4	3.3	
E01026786	E00136209	North Norfolk	2	117	1.71	256	3.5	1.4	1.72%
	E00136210	North Norfolk	0	136	0.00	214	0.0	0.0	
	E00136211	North Norfolk	1	174	0.57	360	1.7	0.5	
	E00136214	North Norfolk	8	86	9.30	278	13.9	5.0	
E01026823	E00136395	Norwich	0	226	0.00	317	0.0	0.0	0%
	E00136412	Norwich	0	239	0.00	374	0.0	0.0	
	E00136423	Norwich	0	246	0.00	204	0.0	0.0	
	E00136424	Norwich	0	194	0.00	313	0.0	0.0	
	E00173827	Norwich	0	358	0.00	215	0.0	0.0	
E01026848	E00136563	Norwich	0	82	0.00	167	0.0	0.0	0%
	E00136565	Norwich	0	159	0.00	226	0.0	0.0	
	E00136567	Norwich	0	140	0.00	142	0.0	0.0	
E01026849	E00136559	Norwich	38	166	22.89	364	66.1	18.2	18.20%
E01026879	E00136717	South Norfolk	5	173	2.89	284	8.7	3.1	22.11%
	E00136719	South Norfolk	71	178	39.89	314	123.5	39.3	
E01026880	E00136718	South Norfolk	15	111	13.51	215	26.1	12.1	12.10%
E01026892	E00136785	South Norfolk	3	88	3.41	194	5.2	2.7	2.70%
E01026893	E00136781	South Norfolk	4	148	2.70	407	7.0	1.7	36.57%
	E00136784	South Norfolk	116	186	62.37	164	201.8	123.1	
E01026894	E00136792	South Norfolk	6	127	4.72	198	10.4	5.3	5.30%
E01026898	E00136815	South Norfolk	22	63	34.92	192	38.3	19.9	18.24%
	E00136816	South Norfolk	30	172	17.44	225	52.2	23.2	
	E00136817	South Norfolk	27	181	14.92	157	47.0	29.9	
	E00136818	South Norfolk	0	138	0.00	180	0.0	0.0	



<b>LSOA11CD</b>	<b>OA11CD</b>	<b>District</b>	<b>Dwelling Count within BA</b> (calculated using GIS in April 2015)	<b>Total Dwelling Count OA</b> (calculated using GIS in April 2015)	<b>% within BA</b>	<b>Total OA population from Census 2011</b>	<b>Population in the Broads part of the OA</b> (Calculated by applying BA Av Household Size of 1.74 to dwelling count within BA (column D))	<b>% of OA population in the Broads</b> (using figures in column H as a percentage of the total OA population from Census 2011 (column G))	<b>% of LSOA population in the Broads.</b> (calculated by dividing column H by G, but adding all the OA in that LSOA)
E01026899	E00136821	South Norfolk	10	62	16.13	373	17.4	4.7	4.70%
E01026911	E00136884	South Norfolk	17	157	10.83	488	29.6	6.1	6.10%
E01026912	E00136882	South Norfolk	10	147	6.80	291	17.4	6.0	4.07%
	E00136886	South Norfolk	4	172	2.33	308	7.0	2.3	
E01026929	E00136976	South Norfolk	29	144	20.14	297	50.5	17.0	12.06%
	E00136977	South Norfolk	5	81	6.17	194	8.7	4.5	
E01026930	E00136979	South Norfolk	12	160	7.50	296	20.9	7.1	3.48%
	E00136981	South Norfolk	5	134	3.73	135	8.7	6.4	
	E00136982	South Norfolk	1	93	1.08	397	1.7	0.4	
	E00136983	South Norfolk	6	70	8.57	372	10.4	2.8	
E01026937	E00137016	South Norfolk	15	216	6.94	304	26.1	8.6	5.40%
	E00137017	South Norfolk	0	170	0.00	179	0.0	0.0	
E01026943	E00137043	South Norfolk	0	55	0.00	279	0.0	0.0	6.30%
	E00137044	South Norfolk	10	129	7.75	324	17.4	5.4	
	E00137045	South Norfolk	13	120	10.83	301	22.6	7.5	
	E00137046	South Norfolk	27	168	16.07	301	47.0	15.6	
	E00137052	South Norfolk	1	49	2.04	202	1.7	0.9	
E01026944	E00137047	South Norfolk	9	49	18.37	198	15.7	7.9	6.69%
	E00137048	South Norfolk	23	125	18.40	372	40.0	10.8	
	E00137050	South Norfolk	3	167	1.80	340	5.2	1.5	
E01030224	E00154146	Waveney	31	128	24.22	124	53.9	43.5	43.50%
E01030225	E00154141	Waveney	49	163	30.06	183	85.3	46.6	11.82%
	E00154142	Waveney	0	124	0.00	460	0.0	0.0	
	E00154143	Waveney	22	124	17.74	402	38.3	9.5	
E01030230	E00154182	Waveney	50	171	29.24	298	87.0	29.2	25.10%
	E00154191	Waveney	47	138	34.06	375	81.8	21.8	
E01030231	E00154190	Waveney	3	147	2.04	274	5.2	1.9	1.35%
	E00154195	Waveney	0	135	0.00	112	0.0	0.0	
E01030234	E00154199	Waveney	0	125	0.00	298	0.0	0.0	0%
E01030235	E00154208	Waveney	7	133	5.26	413	12.2	2.9	2.90%
E01030237	E00173910	Waveney	1	123	0.81	302	1.7	0.6	0.60%
E01030259	E00154344	Waveney	18	69	26.09	118	31.3	26.5	26.50%
E01030260	E00154345	Waveney	4	106	3.77	253	7.0	2.8	4.11%
	E00154346	Waveney	10	103	9.71	219	17.4	7.9	
	E00173915	Waveney	0	42	0.00	121	0.0	0.0	
E01030268	E00154374	Waveney	2	132	1.52	245	3.5	1.4	1.40%
E01030269	E00154390	Waveney	67	121	55.37	279	116.6	41.8	50.10%
	E00154392	Waveney	186	186	100.00	232	232.0	100*	
	E00154401	Waveney	30	131	22.90	289	52.2	18.1	
E01030270	E00154388	Waveney	4	150	2.67	265	7.0	2.6	12.66%
	E00154391	Waveney	42	130	32.31	367	73.1	19.9	
E01030286	E00154479	Waveney	16	95	16.84	364	27.8	7.6	18.97%
	E00154480	Waveney	41	86	47.67	298	71.3	23.9	
	E00154486	Waveney	31	63	49.21	145	53.9	37.2	
E01030289	E00154492	Waveney	44	135	32.59	211	76.6	36.3	23.63%
	E00154499	Waveney	14	167	8.38	216	24.4	11.3	
E01030293	E00154516	Waveney	0	179	0.00	322	0.0	0.0	0%
	E00154518	Waveney	0	190	0.00	327	0.0	0.0	
E01030294	E00154530	Waveney	2	122	1.64	317	3.5	1.1	1.10%
E01033438	E00136547	Norwich	0	169	0.00	302	0.0	0.0	0%
	E00136548	Norwich	0	231	0.00	271	0.0	0.0	
	E00136550	Norwich	0	151	0.00	154	0.0	0.0	
	E00136551	Norwich	0	202	0.00	252	0.0	0.0	
	E00136566	Norwich	0	138	0.00	213	0.0	0.0	

<b>LSOA11CD</b>	<b>OA11CD</b>	<b>District</b>	<b>Dwelling Count within BA</b> (calculated using GIS in April 2015)	<b>Total Dwelling Count OA</b> (calculated using GIS in April 2015)	<b>% within BA</b>	<b>Total OA population from Census 2011</b>	<b>Population in the Broads part of the OA</b> (Calculated by applying BA Av Household Size of 1.74 to dwelling count within BA (column D))	<b>% of OA population in the Broads</b> (using figures in column H as a percentage of the total OA population from Census 2011 (column G))	<b>% of LSOA population in the Broads.</b> (calculated by dividing column H by G, but adding all the OA in that LSOA)
	E00136572	Norwich	0	258	0.00	259	0.0	0.0	
E01033439	E00136543	Norwich	0	331	0.00	298	0.0	0.0	0.26%
	E00136549	Norwich	1	261	0.38	357	1.7	0.5	
E01033440	E00173858	Norwich	0	145	0.00	352	0.0	0.0	0%
E01033441	E00173851	Norwich	0	128	0.00	211	0.0	0.0	0.42%
	E00173852	Norwich	1	160	0.63	140	1.7	1.2	
	E00173853	Norwich	0	133	0.00	258	0.0	0.0	
	E00173854	Norwich	0	156	0.00	330	0.0	0.0	
	E00173860	Norwich	3	120	2.50	449	5.2	1.2	
	E00173861	Norwich	0	132	0.00	295	0.0	0.0	

**3605**

**28746**

**6181.06**

\*Note that the original calculation results in 139% of the population of an OA is in the Broads. This is a reflection that we are applying the average household density across the Broads to each number of dwellings in the BA part of an OA. On this occasion, all dwellings in this OA are in the Broads. As such, we have taken the population to be that as per the Census. This has resulted in the total population in this table being different to that of the 2011 Census (6,271). However, the table gives an indication of where the population of the Broads lives, which is the purpose of the exercise.