

Channel markers

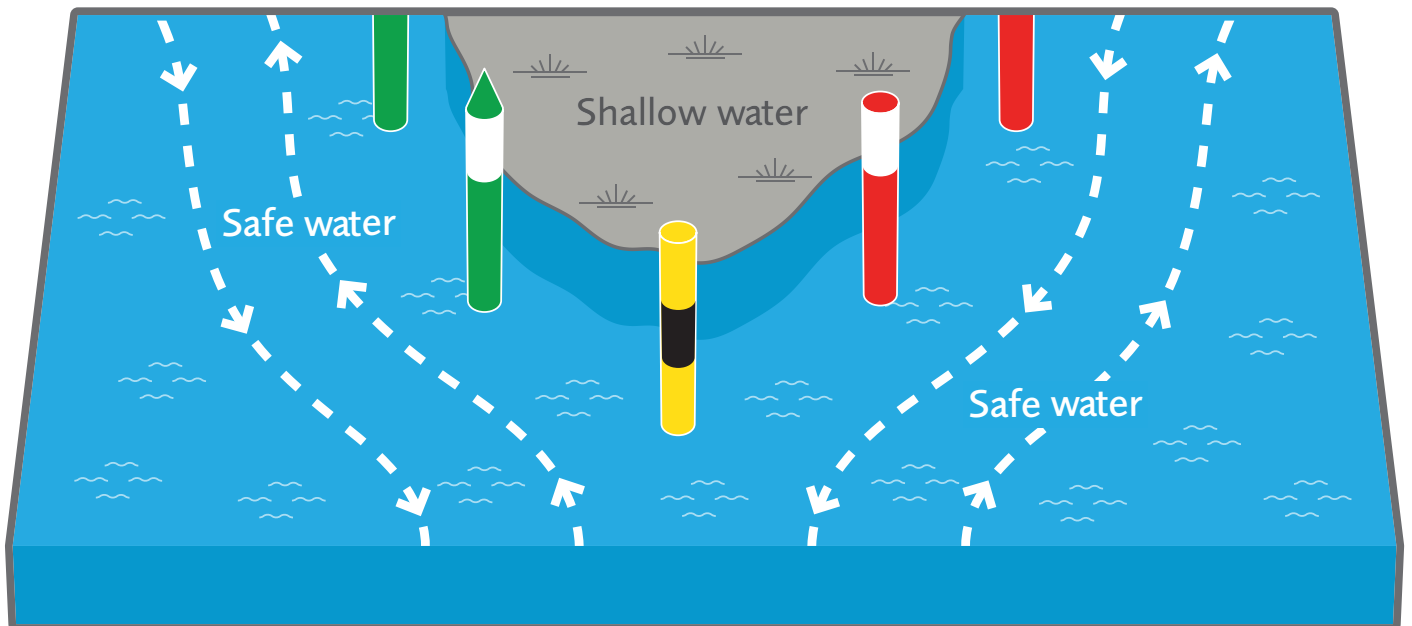
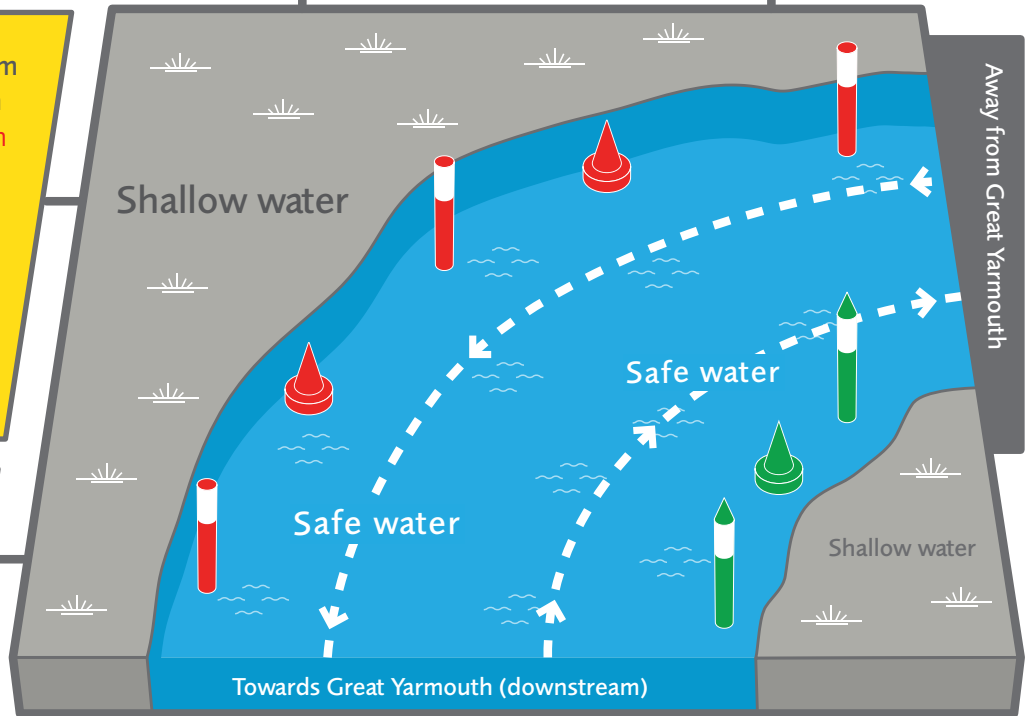
If there are channel markers, stay within the marked channel. In the Broads, markers are usually posts or buoys. Some broads have channels marked across them. Stay clear of all channel markers and don't tie up to them. Unless signs indicate otherwise, keep to the right of the channel.

Markers show where it is safe to proceed within a channel. Areas outside the channel are usually too shallow or they have underwater hazards, even if you can't see them.



- When travelling downstream towards the sea at Gt Yarmouth you should pass **red markers on your right** and **green markers on your left**.
- Travelling upstream (away from the sea at Gt Yarmouth), you should pass **green markers on your right** and **red markers on your left**.

Isolated yellow markers indicate a hazard. Stay clear of them.



A yellow and black marker shows where a river or channel splits in two directions. Pass either side of the marker but don't cut behind it.



Broads Authority
The Broads - a member of the
National Park family