

Sustainability Appraisal Report

to accompany the draft Broads Plan 2022-27

Consultation period: xxxxxxx

Broads Authority
Yare House, 62-64 Thorpe Road
Norwich NR1 1RY
Tel: 01603 610734
Fax: 01603 756069
Email: [broadsplan@broads-authority.gov.uk](mailto:broadspan@broads-authority.gov.uk)
www.broads-authority.gov.uk

Sustainability Appraisal for draft Broads Plan 2022-27

The **Broads Plan** is the key partnership strategy for the Broads National Park. It sets out a long-term vision and strategic objectives to benefit the area’s landscapes, biodiversity, built and cultural environment, economy, and the health and wellbeing of local communities and visitors.

The current 5-year Broads Plan, adopted by the Broads Authority in 2017, is now being updated and will focus on strategic objectives for the period 2022-27.

The purpose of this **Sustainability Appraisal (SA) Report** is to assess any significant environmental, economic and social impacts of implementing the updated Broads Plan. Consultation on the SA Report takes place alongside the consultation on the draft Broads Plan.

Your views are invited on this Sustainability Appraisal Report, to be submitted in writing:

Email: broadspan@broads-authority.gov.uk

Post: Broads Plan, Broads Authority, Yare House, 62-64 Thorpe Road, Norwich NR1 1RY

The consultation period ends at 4pm on ~~xxxxxxxxxxxx~~.



Where to view consultation documents

Visit [Consultations \(broads-authority.gov.uk\)](https://www.broads-authority.gov.uk) to view and download documents relating to this consultation, or contact the Broads Authority for paper copies. You can also see reference copies of the documents at the venues below during the consultation period, but please check individual websites for information on any temporary restrictions to public access as a result of Covid-19).

- Broads Authority, Yare House, 62-64 Thorpe Road, Norwich NR1 1RY
- Broadland District Council, 1 Yarmouth Road, Norwich NR7 ODU
- East Suffolk Council, Riverside, 4 Canning Road, Lowestoft NR33 0EQ
- Great Yarmouth Borough Council, Town Hall, Hall Plain, Great Yarmouth, Norfolk NR30 2QF
- North Norfolk District Council, Holt Road, Cromer NR27 9EN
- South Norfolk Council, Swan Lane, Long Stratton NR15 2XE
- Norfolk County Council, County Hall, Martineau Lane, Norwich NR1 2DH
- Suffolk County Council, Endeavour House, 8 Russell Road, Ipswich IP1 2BX
- Acle Library, Bridewell Lane, Acle NR13 3RA
- Beccles Library, Blyburgate, Beccles NR34 9TB
- Brundall Library, 90 The Street, Brundall NR13 5LH
- Bungay Library, Wharton Street, Bungay NR35 1EL
- Cromer Library, Prince of Wales Road, Cromer NR27 9HS
- Great Yarmouth Library, Tolhouse Street, Great Yarmouth NR30 2SH
- Loddon Library, 31 Church Plain, Loddon NR14 6EX
- Lowestoft Library, Clapham Road South, Lowestoft, NR32 1DR
- Oulton Broad, Library Council Offices, 92 Bridge Road, Oulton Broad NR32 3LR
- Norwich Millennium Library, The Forum, Millennium Plain, Norwich NR2 1AW
- Stalham Library, High Street, Stalham NR12 9AN
- Wroxham Library, Norwich Road, Wroxham NR12 8RX

Contents

Sustainability Appraisal for draft Broads Plan 2022-27	2
1. Introduction	7
1.1. Broads Authority	7
1.2. Broads Plan	7
1.3. Sustainability Appraisal Report	7
1.4. Habitats Regulation Assessment.....	8
2. Scope of the SA	8
2.1. Stages of SA process	8
2.2. Assessing alternatives	9
2.3. Scoping Report.....	9
2.4. SA Objectives and sustainability baseline.....	9
2.5. Summary of assessment	11
2.6. Next steps	11
Appendix 1: Assessment of strategic objectives in draft Broads Plan 2022-27.....	12
Theme A: Responding to climate change and flood risk	12
Theme B: Improving landscapes for biodiversity and agriculture	13
Theme C: Maintaining and enhancing the navigation	14
Theme D: Protecting landscape character and the historic environment.....	15
Theme F: Connecting and inspiring communities.....	17
Appendix 1: SA Framework.....	18
Appendix 2: The Broads: Sustainability baseline	32
A2.1. Biodiversity, geodiversity, flora and fauna	32
A2.2. Habitats	34
A2.3. Land under conservation management.....	35
A2.4. Landscape.....	35
A2.5. Cultural heritage	36

A2.7.	Geodiversity	37
	Peat	37
	Bedrock and soils	40
	Soils	41
2.7.	Water.....	41
	Water supply.....	41
	Water quality	42
	Nitrate Vulnerable Zones and Drinking Water Safeguard Zones.....	44
	Source Protection Zones	45
A2.8.	Climate change.....	46
A2.9.	Flooding.....	48
A2.10.	Air.....	50
A2.11	Material assets.....	51
A2.12.	Minerals and waste.....	51
A2.13.	Ecosystem services.....	51
A2.14	Recreation and economy.....	53
A2.15	Demographic profile	55
A2.16	Economic activity	57
A2.17	Deprivation.....	62
A2.18	Housing	63
	Accommodation type.....	63
	Residential development in the Broads.....	63
	Household composition	65
A2.19	Access and transport.....	66
	Access.....	66
	Car ownership	66
	Rail.....	67

Air.....	67
Travel to work by car	68
Road Traffic Incidents	68
Water	70
Boat usage.....	70
A2.20 Health.....	71
A2.21 Crime.....	71
A2.22 Qualifications	73
A.23 Ethnic group.....	74
Appendix 3: Literature review	75
A3.1. International	75
A3.2. European.....	75
A3.3. National.....	77
A3.4. East Anglia.....	79
A3.5. New Anglia LEP.....	80
A3.6. Norfolk	81
A3.7. Suffolk	82
A3.8. Local	84
A3.9. Broads-specific.....	84
A3.10. Neighbourhood Plans	87

1. Introduction

1.1. Broads Authority

The Broads Authority is a Special Statutory Authority, established under the Norfolk and Suffolk Broads Act 1988 to manage the Broads for the purposes of:

- Conserving and enhancing the natural beauty, wildlife and cultural heritage of the Broads;
- Promoting opportunities for the understanding and enjoyment of the special qualities of the Broads by the public; and
- Protecting the interests of navigation.

None of these three purposes takes precedence. Under the Act, in discharging its functions, the Authority must also have regard to:

- The national importance of the Broads as an area of natural beauty and one which affords opportunities for open-air recreation;
- The desirability of protecting the natural resources of the Broads from damage; and
- The needs of agriculture and forestry and the economic and social interests of those who live or work in the Broads.

Further provisions for the regulation and management of the navigation area were made through the Broads Authority Act 2009.

1.2. Broads Plan

The Broads Authority is required to produce a management plan for the Broads, known as the Broads Plan, and review it at least once every five years¹. The current Broads Plan was adopted in 2017², and is now under review. The draft Broads Plan 2022-27 is published for consultation from xxxxxx to xxxxx.

It is important to note that the Broads Plan is a plan for the Broads, not just for the Broads Authority. While the Authority is responsible for its production, a wide range of organisations, interest groups and communities are involved in caring for the area. As such, the Plan's successful delivery depends on a shared vision and commitment and on partnership working to make the best use of knowledge, efforts and resources.

1.3. Sustainability Appraisal Report

This is the Sustainability Appraisal (SA) Report for the draft Broads Plan 2022-27. It incorporates the requirements of the SEA Directive (2001/42/EC). Strategic Environmental Assessment (SEA) is mandatory for plans and programmes that are prepared for agriculture, forestry, fisheries, energy,

¹ [Norfolk and Suffolk Broads Act 1988](#), part 1 section 3

² [Strategy \(broads-authority.gov.uk\)](#)

industry, transport, waste and water management, telecommunications, tourism, town and country planning or land use, and that set the framework for future development consent of projects listed in the [EIA Directive](#); or that have been determined to require an assessment under the [Habitats Directive](#). Undertaking a broader SA offers a more comprehensive process that considers social and economic factors as well as environmental impacts, and is the best practice approach taken by most National Park Authorities in assessing national park management plans.

This SA Report identifies the likely significant effects on the environment of the draft Broads Plan. The public and the environmental authorities are informed and consulted on the draft Plan and on the SA Report. The SA Report and the consultation responses on the draft Plan are considered before a final Plan is prepared for adoption. Once the Plan is adopted, the environmental authorities and the public are informed and relevant information is made available. To identify unforeseen adverse effects at an early stage, significant environmental effects of the Plan are to be monitored.

1.4. Habitats Regulation Assessment

The draft Broads Plan 2022-27 is also subject to a **Habitats Regulation Assessment (HRA)**, which considers the impacts of the plan on conservation sites designated under the European Habitats Directive. The HRA will be published for consultation alongside the draft Broads Plan and this SA.

2. Scope of the SA

2.1. Stages of SA process

National guidance sets out the requirements for sustainability appraisal at various stages of plan production. Table 1 outlines how these requirements are being addressed in relation to the draft Broads Plan 2022-27.

Table 1

Stages of SA process for Broads Plan 2022-27

Stage	Developing and refining alternatives and assessing effects
Stage A: Setting the context and objectives, establishing the baseline and deciding on the scope	The Broads Authority’s purposes and the long-term Vision for the Broads set the context for the Broads Plan. The sustainability baseline is at Appendix 2 of this draft SA Report. The SA Scoping Report is published at Local Plan for the Broads (broads-authority.gov.uk) .
Stage B: Developing and refining options	The Broads Plan sets the high-level strategic direction for the management of the Broads. The Plan’s objectives are implemented through more detailed plans, programmes and operational procedures that will be subject to their own SA where appropriate.
Stage C: Appraising the effects of the plan	The strategic objectives in the draft Broads Plan 2022-27 have been assessed against the Sustainability Objectives set out in the SA Scoping Report.
Stage D: Consulting on the	CURRENT STAGE

draft plan and SA Report	
Stage E: Monitoring the implementation of the plan	The Broads Plan is monitored through State of the Park indicators, additional monitoring measures at project/operational level, and reporting to the Broads Authority's full board.

2.2. Assessing alternatives

The SA process requires alternatives to be assessed. The core purpose of the Broads Plan is to set the overarching high-level strategic direction for the management of the Broads. It sets out partnership intentions to secure a sustainable future for the Broads environment and communities, with strategic objectives that reflect both the Broads Authority's three statutory purposes (see section 1.1) and the Sustainability Objectives of the SA Framework. As such, alternative options are not formally considered in this SA and the proposed strategic objectives in the draft Broads Plan are evaluated in light of their potential impacts on the SA Sustainability Objectives and the indicators that comprise the sustainability baseline.

2.3. Scoping Report

The **Scoping Report** forms the starting point (Stage A) for sustainability appraisal. Its purpose is to:

- a) Identify other relevant policies, plans and programmes and sustainability objectives;
- b) Collect baseline information;
- c) Identify sustainability issues and problems;
- d) Develop the sustainability appraisal framework; and
- e) Consult the consultation bodies on the scope of the sustainability report.

Alongside this Broads Plan review, the Broads Authority is reviewing the Broads Local Plan, which sets the spatial planning policies for the Broads Authority Executive Area. The same SA scoping exercise, including data collation for the sustainability baseline and literature review, has been undertaken for both plans. The Authority consulted on the [SA Scoping Report](#) with the statutory Environmental Bodies (Natural England, English Heritage and Environment Agency) and other organisations from 23 July to 27 August 2021. The Report and consultation responses may be viewed at [Local Plan for the Broads \(broads-authority.gov.uk\)](http://broads-authority.gov.uk).

2.4. SA Objectives and sustainability baseline

The SA process is designed to inform the content of a developing plan, following its assessment against **SA Objectives**. The SA Objectives used to assess the draft Broads Plan are in Table 2, with a key to the colours and symbols used in Table 3. The **SA Framework** at Appendix 1 includes the decision-making criteria for each SA Objective, together with relevant SEA³ themes.

The SA Objectives relate to different aspects of sustainability. They are broken down into environmental (ENV), social (SOC) and economic (ECO) factors, although there are close interrelationships between them. ENV factors include climate change, air pollution, flood risk,

³ Strategic Environment Assessment

landscape and townscape, wildlife and habitats, water and soil quality; SOC factors include effects on the population such as human health, deprivation, education and housing; and ECO factors include rural economies and economic wellbeing.

Data for the SA Objectives were collected to establish the ‘state of the environment’, known as the **sustainability baseline** (Appendix 2). An analysis of trends and targets was used to help predict how the sustainability baseline might change in light of each of the strategic objectives in the draft Broads Plan. This SA Report also includes a **literature review** of relevant plans, programmes and environmental objectives (Appendix 3).

Table 2

SA Sustainability Objectives

SA Sustainability Objectives
ENV1: To reduce the adverse effects of traffic (on roads and water)
ENV2: To safeguard a sustainable supply of water, to protect and improve water quality and to use water efficiently
ENV3: To protect and enhance biodiversity and geodiversity
ENV4: To conserve and enhance the quality and local distinctiveness of landscapes and towns/villages
ENV5: To adapt, become resilient and mitigate against the impacts of climate change
ENV6: To avoid, reduce and manage flood risk and to become more resilient to flood risk and coastal change
ENV7: To manage resources sustainably through the effective use of land, energy and materials.
ENV8: To minimise the production and impacts of waste through reducing what is wasted, and re-using and recycling what is left
ENV9: To conserve and where appropriate enhance the cultural heritage, historic environment, heritage assets and their settings
ENV10: To achieve the highest quality of design that is innovative, imaginative, sustainable and reflects local distinctiveness
ENV11: To improve air quality and minimise noise, vibration and light pollution
ENV12: To increase the proportion of energy generated through renewable/low carbon processes without unacceptable adverse impacts to/on the Broads landscape
SOC1: To improve the health and wellbeing of the population and promote a healthy lifestyle
SCO2: To reduce poverty, inequality and social exclusion
SOC3: To improve education and skills, including those related to local traditional industries

SA Sustainability Objectives
SOC4: To enable suitable stock of housing meeting local needs, including affordability
SOC5: To maximise opportunities for new/additional employment
SOC6: To improve the quality, range and accessibility of community services and facilities, and to ensure new development is sustainably located with good access by means other than a private car to a range of community services and facilities
SOC7: To build community identity, improve social welfare and reduce crime and anti-social activity
ECO1: To support a flourishing and sustainable economy and improve economic performance in rural areas
ECO2: To ensure the economy actively contributes to social and environmental wellbeing
ECO3: To offer opportunities for tourism and recreation in a way that helps the economy, society and the environment

2.5. Summary of assessment

The outcome of the appraisal (Appendix 1) is that the majority of the strategic objectives in the draft Broads Plan show either a positive or neutral impact on the SA Sustainability Objectives. A small number show uncertain impacts, depending on the implementation of the objective, and none show a negative impact.

It should be noted that a separate SA process will be required for relevant strategies, policies and work programmes that sit below or alongside the Broads Plan and implement its high-level objectives in detail, and these will identify the need for alternative options and for appropriate measures to be put in place to mitigate any negative or uncertain impacts.

2.6. Next steps

The Broads Authority will assess the consultation responses to the draft Broads Plan 2022-27 and accompanying SA Report (this document) and prepare a final draft Broads Plan and SA Report. Pending any final amendments agreed by members at a full Broads Authority meeting in September 2022, the Broads Plan will be adopted and implemented.

Appendix 1: Assessment of strategic objectives in draft Broads Plan 2022-27

Table 3

Key to assessment of SA Objectives

Symbol	Impact on SA Objectives
+	Positive impact
o	No/neutral impact or not relevant
-	Negative impact
?	Uncertain impact / depends on implementation

Theme A: Responding to climate change and flood risk

Strategic objectives 2022-27	ENV1	ENV2	ENV3	ENV4	ENV5	ENV6	ENV7	ENV8	ENV9	ENV10	ENV11	ENV12	SOC1	SOC2	SOC3	SOC4	SOC5	SOC6	SOC7	ECO1	ECO2	ECO3
A1. Work towards making all Broads Authority operations carbon neutral by 2030 and carbon zero by 2040	+	o	+	?	+	o	+	o	o	o	o	+	o	o	o	o	o	o	o	o	o	o
A2. Agree carbon reduction targets for the Broads National Park and promote action to reduce emissions	+	o	+	?	+	+	+	o	o	o	?	+	+	o	o	o	o	o	o	+	o	+
A3. Prepare a long-term integrated flood risk strategy for the Broads, Great Yarmouth and interrelated coastal frontage and maintain current adaptive coastal, tidal and fluvial flood risk management approaches for the area	o	+	+	o	+	+	o	o	o	o	o	o	+	o	o	o	o	o	o	+	o	o

Objectives A1 and A2 should have a positive impact for the environment, and reduce vulnerability of local communities and businesses to the impacts of climate change. The areas of uncertainty acknowledge that the means to reduce carbon emissions may have the potential for either positive or negative effects, depending on the type and scale of development. For example, electric boating may reduce noise and air pollution, but siting electric charging points in rural areas away from power

sources may require more visually intrusive charging structures. Objective A3 should work directly to manage flood risk for the benefit of people, nature and the economy in the Broads and wider area, but the emerging strategy will also be subject to its own SA process.

Theme B: Improving landscapes for biodiversity and agriculture

Strategic objectives 2022-27	ENV1	ENV2	ENV3	ENV4	ENV5	ENV6	ENV7	ENV8	ENV9	ENV10	ENV11	ENV12	SOC1	SOC2	SOC3	SOC4	SOC5	SOC6	SOC7	ECO1	ECO2	ECO3
B1. Restore, maintain and enhance lakes and use monitoring evidence to trial and implement further innovative lake restoration techniques	0	+	+	0	+	+	0	0	0	0	0	0	0	0	0	0	0	0	0	0	0	0
B2. Promote best practice water capture and usage across the Broadland rivers catchment and reduce point and diffuse pollution into the floodplain and water courses	0	+	+	0	+	+	+	0	0	0	0	0	0	0	0	0	0	0	0	0	0	0
B3. Maintain, enhance and increase areas of priority fen, reed bed, grazing marsh and wet woodland, protecting peatland ecosystems as carbon sinks and seeking environmental net gain	0	+	+	0	+	+	+	0	0	0	0	0	0	0	+	0	0	0	0	0	0	0
B4. Define, implement and monitor management regimes for priority species and invasive non-native species	0	+	+	0	+	+	0	0	0	0	0	0	0	0	0	0	0	0	0	0	0	0
B5. Improve partnership coordination and communication of Broads biodiversity monitoring and research effort, linked to national biodiversity network	0	0	+	0	0	0	0	0	0	0	0	0	0	0	0	0	0	0	0	0	0	0

All objectives in this section should have a significant beneficial effect on protecting and enhancing local biodiversity and geodiversity and managing resources sustainably. The objectives should also increase the resilience of Broads’ habitats, wildlife and agriculture to the impacts of climate change, for example through protecting and restoring peatlands to capture and store carbon. A healthy natural environment should also have a secondary beneficial effect in terms of supporting the local tourism economy and promoting social health and wellbeing.

Theme C: Maintaining and enhancing the navigation

Strategic objectives 2022-27	ENV1	ENV2	ENV3	ENV4	ENV5	ENV6	ENV7	ENV8	ENV9	ENV10	ENV11	ENV12	SOC1	SOC2	SOC3	SOC4	SOC5	SOC6	SOC7	ECO1	ECO2	ECO3	
C1. Maintain navigation water depths to defined specifications, reduce sediment input and dispose of dredged material in sustainable and beneficial ways	o	?	?	o	o	o	+	+	o	o	o	o	o	o	o	o	o	o	o	o	o	o	+
C2. Maintain existing navigation water space and develop appropriate opportunities to extend access for various types of craft	o	o	?	o	o	o	o	o	o	o	o	o	+	o	o	o	o	o	o	o	o	o	+
C3. Manage water plants and riverside trees and scrub, and seek resources to increase operational targets	o	?	?	o	o	o	+	o	o	o	o	o	o	o	o	o	o	o	o	o	o	o	o
C4. Maintain and improve safety and security standards and user behaviour on the waterways	o	o	o	o	o	o	o	o	o	o	o	o	+	o	o	o	o	o	+	o	o	o	+

Protecting the interests of navigation is one of the Broads Authority’s statutory purposes. The areas of uncertainty acknowledge that some activities under this theme have the potential to cause mainly short-term negative environmental or ecological effects, such as dredging increasing turbidity and releasing pollutants into the water. To mitigate such impacts, the Broads Authority applies [Environmental Standard Operating Procedures](#) to all its practical and engineering works, including dredging and water plant management, and this guidance is generic across all operators in the Broads. However, these activities can also enhance biodiversity, such as improving water quality by restoring depth and flow and by removing polluted sediment. In terms of managing flood risk, various modelling studies have shown that increasing the depth in tidal rivers such as in the Broads does not influence the water levels during flood events.

To minimise the potential for waterborne recreational activities within the navigation area to have negative environmental impacts, such as disturbing wildlife and increasing sedimentation from bank erosion, the Authority applies measures such as zoning agreements and permits (e.g. for water-skiing) and speed limit byelaws. It also works with local tourism operators and other partners to promote safe and environmentally friendly boating guidance to waterways users. Maintaining and improving the navigation should have a beneficial secondary effect on supporting the local economy and on promoting peoples’ health and wellbeing.

Theme D: Protecting landscape character and the historic environment

Strategic objectives 2022-27	ENV1	ENV2	ENV3	ENV4	ENV5	ENV6	ENV7	ENV8	ENV9	ENV10	ENV11	ENV12	SOC1	SOC2	SOC3	SOC4	SOC5	SOC6	SOC7	ECO1	ECO2	ECO3	
D1. Record, protect and enhance local built and cultural features, archaeology and potential hidden heritage, including ‘at risk’ assets	0	0	+	+	0	0	0	0	+	+	0	0	0	0	+	0	+	0	0	0	0	?	+
D2. Maintain an up-to-date Broads Landscape Character Assessment and use to inform conservation action plans	0	0	+	+	0	0	0	0	+	+	0	0	0	0	0	0	0	0	0	0	0	?	+
D3. Maintain up-to-date Conservation Area designations, appraisals and management proposals	0	0	+	+	0	0	0	0	+	+	0	0	0	0	0	0	0	0	?	+	0	?	?
D4. Reduce the impacts on the Broads of visual intrusion and noise and light pollution, and promote Dark Sky Discovery Sites	0	0	+	+	0	0	0	0	+	+	+	0	+	0	0	0	0	0	0	0	0	0	+

The objectives to monitor, protect and enhance the Broads’ landscape character and heritage assets, including ‘at risk’ assets, should have a positive effect on the area’s distinctiveness and quality, on improving local community services and facilities, and on supporting local traditional industries such as thatching and millwrighting. Action to deliver the objectives may have a negative impact on the natural and cultural environment if not appropriately planned for, but the potential for this to happen should be mitigated through local landscape and conservation area assessments where relevant, asset management plans, the provision of advice to owners and developers, and the application of Local Plan development policies (that are subject to their own SA process to limit the potential for negative impacts, using the same SA Sustainability Objectives as used for the Broads Plan). The objectives are also likely to have a beneficial secondary effect on the tourism economy, and may help to foster community identity and a sense of place.

Theme E: Promoting understanding and enjoyment

Strategic objectives 2022-27	ENV1	ENV2	ENV3	ENV4	ENV5	ENV6	ENV7	ENV8	ENV9	ENV10	ENV11	ENV12	SOC1	SOC2	SOC3	SOC4	SOC5	SOC6	SOC7	ECO1	ECO2	ECO3
E1. Improve the integrated network of access routes and points (with easier access for people with mobility and sensory needs), linked to visitor facilities	+	o	?	o	+	o	o	o	o	o	o	o	+	+	o	o	o	+	o	+	o	+
E2. Offer a coordinated and year-round programme of visitor activities that promote a ‘Broads’ experience’, taking measures to prevent any adverse environmental impacts	o	o	?	o	o	o	o	o	o	o	o	o	+	o	+	o	o	o	o	+	o	+
E3. Maintain and upgrade the range and provision of integrated multimedia interpretation about the special qualities of the Broads National Park, and ‘point of need’ information for visitors	o	o	o	o	o	o	o	o	o	o	o	o	o	o	o	o	o	o	o	o	o	+
E4. Strengthen the quality and distinctiveness of the local tourism offer, including careers and skills training	o	o	o	o	o	o	o	o	o	o	o	o	o	+	+	o	+	o	o	+	o	+

The objectives in this section support the Broads Authority’s second purpose to promote understanding and enjoyment of the Broads National Park. They should have beneficial impacts on the local tourism economy and employment and on the social health and wellbeing, environmental awareness and social inclusion of local communities and visitors. The areas of uncertainty acknowledge that an increase in infrastructure to support recreational access and activity could have negative environmental impacts, as could a significant increase in visitor numbers. These potential outcomes are mitigated through good communication about the area’s protected status and special qualities, and through the application of Broads Local Plan policies that are subject to their own SA process to limit the potential for negative impacts (using the same SA Sustainability Objectives as used for the Broads Plan). Projects identified in county access and travel improvement plans will also be subject to SA.

Theme F: Connecting and inspiring communities

Strategic objectives 2022-27	ENV1	ENV2	ENV3	ENV4	ENV5	ENV6	ENV7	ENV8	ENV9	ENV10	ENV11	ENV12	SOC1	SOC2	SOC3	SOC4	SOC5	SOC6	SOC7	ECO1	ECO2	ECO3
F1. Increase and promote accessible and ‘taster’ activities that foster physical and mental health and wellbeing for all, including under-represented groups	o	o	o	o	o	o	o	o	o	o	o	o	+	+	+	o	?	o	o	o	+	+
F2. Offer varied, flexible and sustainable volunteering opportunities and skills training to suit diverse audiences	o	o	?	?	o	o	o	o	?	o	o	o	+	+	+	o	?	o	o	o	+	+
F3. Provide and expand schools-based and outreach environmental education opportunities for young people, using the Broads as a learning resource	o	o	?	o	o	o	o	o	o	o	o	o	+	+	+	o	?	o	o	o	+	+
F4. Provide up-to-date planning policy, site-specific allocations and planning guidance to support local community needs and ensure development happens within environmental limits	? The Local Plan for the Broads will be reviewed during this Broads Plan period and will be subject to its own SA process to limit the potential for negative impacts in the spatial delivery of Broads Plan objectives.																					
F5. Increase income generation to support Broads-themed projects	? Any activity supported through increased income would be subject to its own SA process to limit the potential for negative sustainability impacts.																					

The objectives in this section to provide opportunities for all, including young people and those from under-represented or disadvantaged groups, to experience the Broads should have positive social and economic impacts, including promoting health and wellbeing and reducing social exclusion. Offering volunteering and skills training opportunities and providing environmental education and outreach should foster greater engagement with young people and local communities, raising awareness of and respect for the Broads’ environment and special qualities, and may also help to build community identity. Depending on their implementation, these activities should also help to protect and enhance the environment and may be beneficial for participants’ employment opportunities, for example by enhancing practical and life skills.

Appendix 1: SA Framework

Table 4 sets out the SA Sustainability Objectives, relevant SEA themes, and the decision-making criteria used to help assess the strategic objectives in the Broads Plan. It should be noted that the same SA Framework is being used to assess the policies and allocations in the emerging Broads Local Plan, and some of the decision-making criteria will be more relevant to that document.

Table 4

SA Sustainability Objectives (SO) decision-making criteria

SO	SEA themes	Reason for SO	Decision-making criteria
ENV1: To reduce the adverse effects of traffic (on roads and water)	Climate change, air and pollution	Modes of transport can impact local air quality, heritage, health and carbon emissions.	<ul style="list-style-type: none"> • How does the policy/allocation/strategic objective affect: <ul style="list-style-type: none"> ○ Walking, cycling, public transport? ○ Air quality? ○ Amenity? ○ Single occupancy car use? ○ Use of waterways? ○ Access to special qualities of the Broads by sustainable transport modes? ○ The net impact of transport infrastructure such as road signage, lighting, conspicuous structures and parking? • What is the resulting impact of traffic on: <ul style="list-style-type: none"> ○ Heritage? ○ Landscape? ○ People? ○ Water? • Is the allocation within walking distance⁴ of key services?

⁴ Manual for Streets states this as being 10 minutes/800m

SO	SEA themes	Reason for SO	Decision-making criteria
			<ul style="list-style-type: none"> • Will routes be: <ul style="list-style-type: none"> ○ functional and accessible for all? ○ safe and attractive public spaces? • Does it consider the needs of the most vulnerable users first: pedestrians, then cyclists, then public transport users, specialist vehicles like ambulances and finally other motor vehicles?
ENV2: To safeguard a sustainable supply of water, to improve water quality and to use water efficiently	Land, water and soil resources	Water quality in the Broads is critical to the area's value for wildlife, and to its appeal for recreation providing a higher value tourism economy. Anglia Water Services estimate that the Norwich and the Broads (Norwich) resource zone will be in deficit by 2045.	<ul style="list-style-type: none"> • How does the policy/allocation/strategic objective affect: <ul style="list-style-type: none"> ○ Water quality? ○ Water quantity? ○ Surface water run off? Does it reduce run-off rates? Does it increase water absorption / management? ○ Wastewater? ○ Drainage? ○ Pathways for pollutants?
ENV3: To protect and enhance biodiversity and geodiversity	Biodiversity	One of the statutory purposes of the Broads Authority is to conserve and enhance the natural beauty and wildlife of the Broads. It is one of the most important freshwater wetlands in Europe and over 25% of the 300km of the nationally protected landscape has a European designation for its	<ul style="list-style-type: none"> • How does the policy/allocation/strategic objective affect: <ul style="list-style-type: none"> ○ The ability to retain and maintain soil carbon? ○ Geological interests? ○ The potential for managed accessible geological feature exposures? ○ County Wildlife Sites? ○ Local and National Nature Reserves? ○ Ramsar Sites? ○ SPAs, SACs? ○ SSSIs? ○ BAP Priority Species and habitats?

SO	SEA themes	Reason for SO	Decision-making criteria
		<p>nature conservation interest, including three Special Areas of Conservation and two Special Protection Areas; large parts are designated as an internationally important wetland under the Ramsar convention. Soils in the Broads contain and continue to store large amounts of carbon and archaeological remains.</p>	<ul style="list-style-type: none"> ○ Habitat connectivity and Ecological Networks? ○ Trees and hedgerows? ○ Waterbodies? ○ Green Infrastructure?
<p>ENV4: To conserve and where appropriate enhance the quality and local distinctiveness of landscapes and towns/villages</p>	<p>Cultural heritage, landscape and townscape</p>	<p>It is the tranquil character or the characteristic of the Broads together with its expansive character of open undeveloped skylines that are among the primary special qualities underpinning the national designation of the Broads. The open distinctive landscape comprises a complex and interlinked mosaic of wetland habitats including open water,</p>	<ul style="list-style-type: none"> ● How does the allocation/policy/strategic objective affect: <ul style="list-style-type: none"> ○ The setting of the Broads? ○ The perception of the Broads? ○ The landscape character? ○ Cultural heritage and heritage assets? ○ Dark skies and tranquillity? ○ The special qualities of the Broads⁵? ○ Landscape features? ○ Peat? ○ Conservation Areas? ○ Designated and undesignated heritage assets? ○ The quality and local distinctiveness of the Broads towns/villages/buildings?

⁵ Taken from the Broads Climate Change Adaptation Plan: Open water in lakes and rivers, Breydon Water (estuary), Fens/reed beds, Grazing marshes and ditches, Wet woodlands, Historic buildings, especially mills, Boating and the riverside economy, Farmland (including rights of way), Open landscapes, big skies and tranquillity and the coast.

SO	SEA themes	Reason for SO	Decision-making criteria
		reedbeds, carr woodland, grazing marsh and fen meadow. Human interaction has helped shape the Broads.	<ul style="list-style-type: none"> ○ Open Space? ○ Green Infrastructure? ○ Harmful incremental change?
ENV5: To adapt to and mitigate against the impacts of climate change	Climate change, air and pollution	The Broads is an ever-changing living landscape, shaped over centuries by the interaction between people, the environment and the climate. While these dynamic processes will continue, sea level rise and the predicted more rapid changes to the climate pose considerable challenges and opportunities to this easterly, low-lying wetland.	<ul style="list-style-type: none"> ● How does the allocation/policy/strategic objective affect: <ul style="list-style-type: none"> ○ Emissions of greenhouse gases? ○ Sequestering carbon dioxide? ○ Single occupancy car use? ○ HGV/delivery movements? ○ Public transport? ○ Cycling/walking? ○ Boat emissions? ○ The ability of communities to adapt? ○ The ability of habitats and species to adapt? ○ Peat? ○ Energy use? ○ Open Space? ○ Green Infrastructure?
ENV6: To avoid, reduce and manage flood risk and to become more resilient to flood risk	Land, water and soil resources, climate change, air and pollution	80% of the Broads Executive Area is at risk of flooding. There are well-known impacts of flooding to people, the environment and the economy. The coastal area of the Broads is at risk of saline incursion further	<ul style="list-style-type: none"> ● Is flood risk avoided? ● Is flood risk managed/mitigated? ● How does the allocation/policy/strategic action affect flooding: <ul style="list-style-type: none"> ○ On site? ○ In the vicinity? ○ Elsewhere? ● Is the allocation in the area of highest risk of flooding?

SO	SEA themes	Reason for SO	Decision-making criteria
and coastal change		up the rivers during spring tides and storm surges, drought and flooding events as well as erosion or breach of the sea defences.	<ul style="list-style-type: none"> • Is the allocation appropriate to the flood risk on site? • Does the policy/strategic objective consider different sources of flooding⁶? • What is the impact of climate change on flood risk? • Can flood risk be reduced? • How vulnerable is the proposed land use⁷? • Does the policy/allocation/strategic objective reduce run-off rates? • Does it increase water absorption / management? • Does it affect risk to people or property? • Does it affect opportunities for future coastal management? • Does it restrict choice for managing the coast in the future? • Does it consider the effect of or potential for damage (e.g. to a structure)?
ENV7: To manage resources sustainably through the effective use of land, energy and materials	Land, water and soil resources	The efficient and effective use of resources is a key consideration in plan making, especially with regards to not sterilising mineral resources, the re-use of brownfield land appropriately and reducing energy consumption.	<ul style="list-style-type: none"> • Is the allocation on: <ul style="list-style-type: none"> ○ Brownfield Land? ○ Greenfield Land? • Does the allocation use land effectively? • Does the allocation/policy/strategic objective affect energy efficiency? • Are there any safeguarded mineral sites? • Will it prevent the sterilisation of known or suspected mineral resources by development? • Does the policy consider origin of resource/where resource derived from?
ENV8: To minimise the	Population and human	National and local policy aims to reduce the amount of waste	<ul style="list-style-type: none"> • Does the policy/strategic objective help reduce waste, reuse waste or recycle/compost?

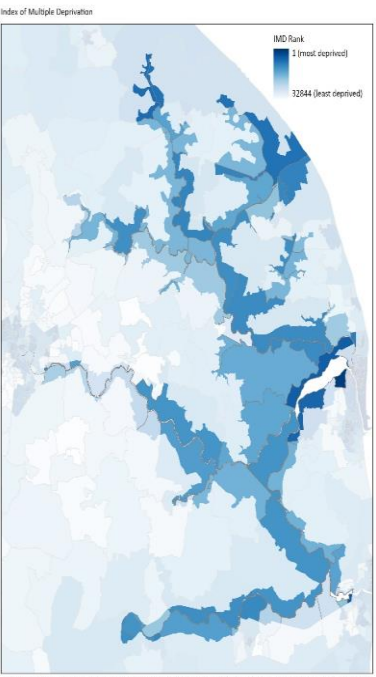
⁶ Including from rivers and the sea, directly from rainfall on the ground surface and rising groundwater, overwhelmed sewers and drainage systems, and from reservoirs, canals and lakes and other artificial sources.

⁷ <http://planningguidance.planningportal.gov.uk/blog/guidance/flood-risk-and-coastal-change/flood-zone-and-flood-risk-tables/table-2-flood-risk-vulnerability-classification/>

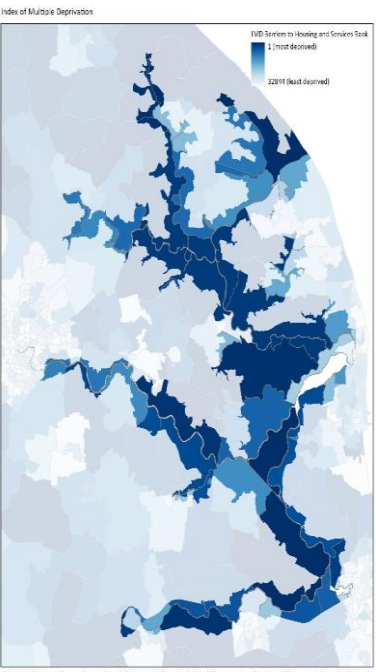
SO	SEA themes	Reason for SO	Decision-making criteria
production and impacts of waste through reducing what is wasted, and re-using and recycling what is left	health, climate change, air and pollution	produced and to reduce the amount and proportion of waste disposed of to landfill, in accordance with the waste hierarchy, to meet the Landfill Directive targets.	
ENV9: To conserve and where appropriate enhance the cultural heritage and archaeological importance of the area	Cultural heritage, landscape and townscape	The cultural heritage includes the landscape and built environment, archaeology, conservation areas, and local skills, crafts and traditions. The Broads is of significant cultural value. Its landscape reflects historic patterns of human activity over thousands of years, and contains features particular to the area.	<ul style="list-style-type: none"> • Does the allocation/policy/strategic objective affect: <ul style="list-style-type: none"> ○ The quality and local distinctiveness of the Broads towns/villages/buildings? ○ Designated and undesignated heritage assets? ○ Conservation Areas? ○ Archaeology? ○ Local culture and traditions? ○ The wider cultural heritage of the broads? ○ The history, traditions, customs and the spaces and places these rely upon or relate to?
ENV10: To achieve the highest quality of design that is innovative, imaginable,	Cultural heritage, landscape and townscape	Design is crucial in a protected landscape like the Broads. Development needs to take account of the characteristics of the site as well as what is distinctive in the wider Broads	<ul style="list-style-type: none"> • Does the allocation/policy/strategic objective: <ul style="list-style-type: none"> ○ Appreciate what is special about the site? ○ Relate to the site's setting in the landscape/townscape? ○ Appreciate the rich cultural heritage of the area? • Are these issues considered? <ul style="list-style-type: none"> ○ local character (including landscape setting)

SO	SEA themes	Reason for SO	Decision-making criteria
and sustainable and reflects local distinctiveness		setting.	<ul style="list-style-type: none"> ○ safe, connected and efficient streets ○ a network of greenspaces (including parks) and public places ○ crime prevention ○ security and lighting measures in the context of dark skies ○ access and inclusion ○ efficient use of natural resources ○ cohesive & vibrant neighbourhoods ○ layout – the way in which buildings and spaces relate to each other ○ form – the shape of buildings ○ scale – the size of buildings ○ detailing – the important smaller elements of building and spaces ○ materials – what a building is made from ○ sensitive design of road infrastructure? (e.g. reduced signage road markings, use of local materials and alternative traffic calming methods)
ENV11: To improve air quality and minimise noise, vibration and light pollution	Population and human health. Climate change, air and pollution	Air quality, noise and light can affect health, well-being and biodiversity.	<ul style="list-style-type: none"> ● Does the allocation/policy/strategic objective affect: <ul style="list-style-type: none"> ○ Air quality? ○ Noise production? ○ Vibration? ○ Light pollution/dark skies? ● How does it relate to Air Quality Management Areas? ● Would it make additional noise or be sensitive to the prevailing acoustic environment? ● Have cumulative impacts of development/change been considered? ● Does it affect the tranquillity of the Broads?
ENV12: To increase the	Climate change, air	National policy seeks renewable energy generation to reduce	<ul style="list-style-type: none"> ● Does the allocation/policy/strategic objective affect: <ul style="list-style-type: none"> ○ Renewable/low carbon energy generation?

SO	SEA themes	Reason for SO	Decision-making criteria
<p>proportion of energy generated through renewable/low carbon processes without unacceptable adverse impacts to/on the Broads landscape</p>	<p>and pollution, cultural heritage, landscape and townscape</p>	<p>carbon emissions and potentially have economic benefits, but generating equipment and supporting infrastructure can affect landscape character.</p>	<ul style="list-style-type: none"> ○ Renewable/low carbon energy transmission? ○ The setting of the Broads? ○ The perception of the Broads? ○ The landscape character? ○ The special qualities of the Broads? ● Have cumulative impacts of renewable/low carbon energy generation been considered?
<p>SOC1: To improve the health of the population and promote a healthy lifestyle</p>	<p>Population and human health</p>	<p>Mental health, healthy life styles, wellbeing and reducing health inequalities.</p>	<ul style="list-style-type: none"> ● Does the allocation/policy/strategic objective: <ul style="list-style-type: none"> ○ Affect physical and/or mental health? ○ Affect wellbeing? ○ Promote active lifestyles? ○ Promote active travel? ● Does it include: <ul style="list-style-type: none"> ○ Publicly accessible open space? ○ Sports facilities? ○ Health infrastructure? ● Does it enable active use of water space?

SO	SEA themes	Reason for SO	Decision-making criteria
<p>SOC2: To reduce poverty, inequality and social exclusion</p>	<p>Population and human health, inclusive communities</p>	 <p>The darker the blue, the more deprived the area.</p>	<ul style="list-style-type: none"> ● Does the policy/allocation/strategic objective affect any of these domains: <ul style="list-style-type: none"> ○ Income ○ Employment ○ Health and Disability ○ Education, Skills and Training ○ Barriers to Housing and Services ○ Crime ○ Living Environment ● Does it affect inclusive communities? ● Does it affect community cohesion? ● Does it affect quality of life? ● Does it avoid potential for inequality or serve to positively address existing identified inequalities through its implementation?
<p>SOC3: To improve education and skills including those related to local traditional</p>	<p>Population and human health, economic activity</p>	<p>Children and young people in Norfolk schools achieve less well than in other parts of England. Suffolk is still performing poorly in comparison with national averages and its statistical</p>	<ul style="list-style-type: none"> ● Is the policy/allocation/strategic objective for an education/skills establishment? ● Does it enable improved understanding of the special qualities, pressures and management of the Broads to all? ● Does it relate to traditional Broads industries? ● Will it facilitate improved access to vocational training, education and skills for all, including young people? ● Will it facilitate opportunity for delivery and uptake of traditional skills training which may

SO	SEA themes	Reason for SO	Decision-making criteria
industries		neighbours. 'Special qualities' of the Broads include cultural heritage, wetland landscape, biodiversity, navigable waterways. National policy supports heritage and cultural skills training and employment in traditional Broads industries.	benefit wider Broads purposes?
SOC4: To enable suitable stock of housing meeting local needs including affordability	Population and human health. Inclusive communities	The Broads Authority will have a housing need figure for the Local Plan to address. With constraints on new development, meeting the residential needs of the local community for affordable housing is a key challenge.	<ul style="list-style-type: none"> • Does the policy/allocation/strategic objective affect: <ul style="list-style-type: none"> ○ Housing? ○ Affordable Housing? ○ Gypsy and Traveller accommodation? ○ Residential moorings/boats used as residences?
SOC5: To maximise opportunities for new/additional employment	Economic activity	Local planning authorities should have a clear understanding of business needs within the economic markets operating in and across their area. Sustainable economic development.	<ul style="list-style-type: none"> • Does the policy/allocation/strategic objective affect: <ul style="list-style-type: none"> ○ Employment land uses? ○ Numbers of jobs? ○ Tourism? ○ Does it relate to traditional Broads industries?

SO	SEA themes	Reason for SO	Decision-making criteria
<p>SOC6: To improve the quality, range and accessibility of community services and facilities and to ensure new development is sustainability located with good access by means other than a private car to a range of community services and facilities</p>	<p>Population and human health, inclusive communities</p>	 <p>The darker the blue, the more deprived in terms of barriers to Housing and Services. With a sparse population, it can be difficult to maintain essential rural services such as shops, post offices and public transport.</p>	<ul style="list-style-type: none"> • Is the allocation/policy/strategic action within walking distance (800m) from Key Services? • Is the allocation within a settlement boundary? • Is the allocation/policy/strategic action for a key service? • Will the allocation/policy/strategic action affect public transport, walking and cycling? • Does the policy/allocation/strategic action relate to Local Green Space? • Will routes be functional and accessible for all? • Will routes be safe and attractive public spaces? • Does it consider the needs of the most vulnerable users first: pedestrians, then cyclists, then public transport users, specialist vehicles like ambulances and finally other motor vehicles? • Will it support the retention of key facilities and services ensuring that local needs are met locally wherever possible or alternative sustainable access is provided?

SO	SEA themes	Reason for SO	Decision-making criteria
SOC7: To build community identity, improve social welfare and reduce crime and anti-social activity	Population and human health, inclusive communities	The planning system can play an important role in facilitating social interaction and creating healthy, inclusive communities.	<ul style="list-style-type: none"> ● Does the policy/allocation/strategic objective relate to: <ul style="list-style-type: none"> ○ Designing out crime? ○ Designing in community safety? ○ An inclusive environment? ○ Robust structure and identity? ○ Interaction with other uses positively? ○ Avoiding opportunities for conflict?
ECO1: To support a flourishing and sustainable economy and improve economic performance in rural areas	Economic activity	<p>Local planning authorities should have a clear understanding of business needs within the economic markets operating in and across their area. Sustainable economic development. Planning policies and decisions should help create the conditions in which businesses can invest, expand and adapt. Planning policies should support economic growth in rural areas in order to create jobs and prosperity by taking a positive approach to sustainable new development.</p>	<ul style="list-style-type: none"> ● Will the policy/allocation provide the spaces and infrastructure to support self-employment opportunities and business start-up? ● Will it support existing business viability and local employment growth? ● Does it contribute to a thriving rural community? ● Does it contribute to a prosperous rural community?

SO	SEA themes	Reason for SO	Decision-making criteria
ECO2: To ensure the economy actively contributes to social and environmental well-being	Economic activity, population and human health, inclusive communities	Local plans need to positively and proactively encourage sustainable economic growth.	<ul style="list-style-type: none"> • How does the policy/allocation/strategic objective affect ‘Social Capital’? <ul style="list-style-type: none"> ○ Skills development ○ Community cohesion ○ Amenity ○ Job provision ○ Quality of life • How does it affect ‘Low Carbon’? <ul style="list-style-type: none"> ○ Innovation ○ Resource efficiency • How does it affect ‘Natural Capital’? <ul style="list-style-type: none"> ○ Landscape ○ Biodiversity
ECO3: To offer opportunities for Tourism and recreation in a way that helps the economy, society and the environment.	Economic activity. Population and human health. Inclusive communities	Tourism is important to the Broads economy and promoting the area for enjoyment and recreation is a statutory purpose of the Broads Authority. The Broads is one of the most extensive and varied inland waterway systems in the UK, offering 190km of boating on lock-free tidal navigable rivers, including navigation to the sea. Wetland and coastal habitats and species can be negatively affected by	<ul style="list-style-type: none"> • Does the policy/allocation/strategic objective affect: <ul style="list-style-type: none"> ○ Sustainable tourism ○ Responsible tourism • Does it: <ul style="list-style-type: none"> ○ Promote enjoyment and understanding of the Broads? ○ Raise awareness of the Broads as a special destination? ○ Drive up the quality of the visitor experience? ○ Strengthen tourism performance across the whole Broads area? ○ Maintain the Broads’ position as a premier inland boating destination in the UK? ○ Respect the sensitive environment of the Broads? ○ Provide the right conditions for successful tourism businesses? ○ Will it maximise benefits and minimise impacts from visitors to communities?

SO	SEA themes	Reason for SO	Decision-making criteria
		recreational disturbance. Land based tourism is popular (and the Broads Authority would like to encourage more land-based activity) and contributes significantly to the local tourist economy.	

DRAFT

Appendix 2: The Broads: Sustainability baseline

A2.1. Biodiversity, geodiversity, flora and fauna

The Broads contains a mosaic of habitats which gives the area a high conservation value and contributes to the distinctiveness of the landscape. The wetlands which characterise the Broads are essentially a freshwater system, becoming more brackish towards the coast. As well as rivers, estuary and broads, there are fens, reedbeds, wet woodlands, coastal dunes and grazing marshes.

The Biodiversity Audit headlines are that the Broads is home to around 1,500 species of conservation concern, with 66 species relying almost entirely on the Broads for UK survival.

As well as having status equivalent to a national park, the Broads contains many areas with national and international designations for their environmental and wildlife importance, including Special Areas of Conservation (SAC), Special Protection Areas (SPA), Ramsar sites, Sites of Special Scientific Interest (SSSI), numerous County Wildlife Sites (both within the area and close to or on the border of the Broads), as well as 8 National Nature Reserves and one Local Nature Reserve. Virtually the entire SSSI network is designated as internationally important for nature conservation and has either SPA or SAC status under European legislation. A large number of SPAs are also Ramsar sites. Table 1 shows the condition of SSSI in the Broads area. (Source: [Natural England, December 2021](#))

Table 1

SSSI condition in Broads (Dec 2021)

SSSI	% area of favourable/unfavourable recovering	% area favourable	% area unfavourable recovering	% area unfavourable no change	% area unfavourable declining
Alderfen Broad	100.00%	8.65%	91.35%	0.00%	0.00%
Ant Broads and Marshes	92.71%	49.90%	42.81%	0.00%	7.29%
Barnby Broad & Marshes	100.00%	59.93%	40.07%	0.00%	0.00%
Breydon Water	100.00%	100.00%	0.00%	0.00%	0.00%
Broad Fen, Dilham	100.00%	0.00%	100.00%	0.00%	0.00%
Bure Broads and Marshes	89.93%	43.08%	46.85%	10.07%	0.00%
Burgh Common and Muckfleet Marshes	96.57%	27.00%	69.57%	3.43%	0.00%
Crostick Marsh	0.00%	0.00%	0.00%	100.00%	0.00%
Damgate Marshes, Acle	100.00%	74.73%	25.27%	0.00%	0.00%
Decoy Carr, Acle	100.00%	70.21%	29.79%	0.00%	0.00%
East Ruston Common	100.00%	38.11%	61.89%	0.00%	0.00%
Geldeston Meadows	0.00%	0.00%	0.00%	97.18%	2.82%

SSSI	% area of favourable/unfavourable recovering	% area favourable	% area unfavourable recovering	% area unfavourable no change	% area unfavourable declining
Hall Farm Fen, Hemsby	100.00%	100.00%	0.00%	0.00%	0.00%
Halvergate Marshes	81.77%	72.75%	9.02%	18.23%	0.00%
Hardley Flood	100.00%	100.00%	0.00%	0.00%	0.00%
Leet Hill, Kirby Cane (near to BA boundary)	0.00%	0.00%	0.00%	0.00%	100%
Limpenhoe Meadows	100.00%	0.00%	100.00%	0.00%	0.00%
Ludham - Potter Heigham Marshes	100.00%	100.00%	0.00%	0.00%	0.00%
Poplar Farm Meadows, Langley	100.00%	100.00%	0.00%	0.00%	0.00%
Priory Meadows, Hickling	100.00%	29.79%	70.21%	0.00%	0.00%
Sprat's Water and Marshes, Carlton Colville	99.67%	80.48%	19.19%	0.33%	0.00%
Stanley and Alder Carrs, Aldeby	100.00%	0.00%	100.00%	0.00%	0.00%
Trinity Broads	87.46%	45.48%	41.98%	12.54%	0.00%
Upper Thurne Broads and Marshes	80.62%	63.97%	16.65%	4.82%	14.57%
Upton Broad & Marshes	99.28%	7.43%	91.84%	0.72%	0.00%
Winterton-Horsey Dunes	77.80%	67.92%	9.88%	22.20%	0.00%
Yare Broads and Marshes	50.52%	39.22%	11.30%	47.27%	2.20%

Where unfavourable condition exists, it is mostly due to eutrophication, excessive nutrients and water abstraction, agricultural runoff and water pollution from sewage, and industrial and urban discharge.

Peatland is a particularly important feature of the Broads, covering about 27% of the area and the basis of both fen and wet woodland habitats and some drained marshes (or fen meadows). These are highly valuable for the characteristic and specialised wildlife of the Broads. Altogether, the Broads contains the largest expanse of species-rich fen in lowland Britain as well as the most extensive tract of wet woodland within the region. Grazing marshes are another characteristic habitat of the area. Each of these habitats supports a different wealth of species, and each requires active management to maintain.

Biodiversity within the Broads is being affected by a number of threats and pressures. These include land-take for development, invasion of non-native species, pollution, habitat fragmentation, disturbance (such as recreation impact), sea level rise and climate change. In particular, the area is threatened by two sets of water resource problems – low river flows and depleted groundwater and the threat of increased salt water incursion and tidal salt water flooding. Water quality is also an issue – the main threat comes from waste

water and diffuse pollution, often arising from outside the Broads boundary, for example, from sewage, farm and road run-off.

A2.2. Habitats

The various habitat sites of the Broads (area circled in red) and the wider local area shown on Map 1 and in Table 2 (Source: [Natural Capital Evidence Compendium for Norfolk and Suffolk](#), 2020) show that much of the Broads is pastures and natural grassland.

Map 1

Broads habitat classes

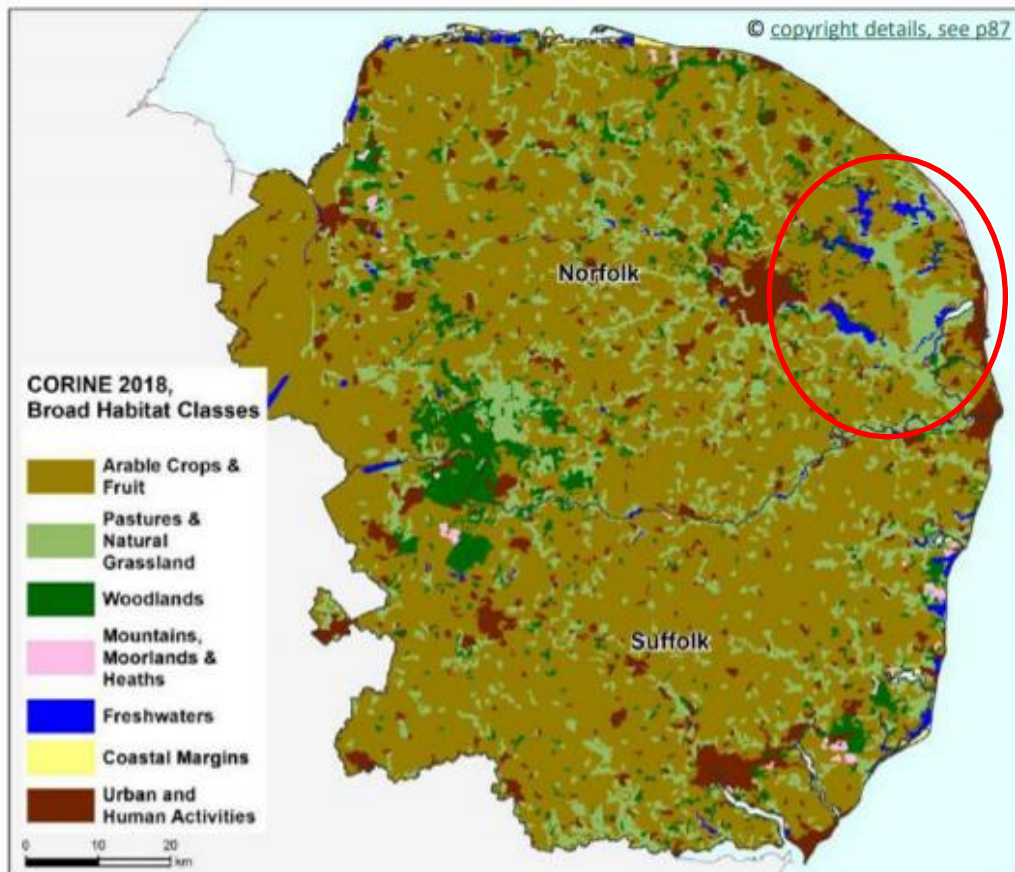


Table 2

Broads habitats by type (data)

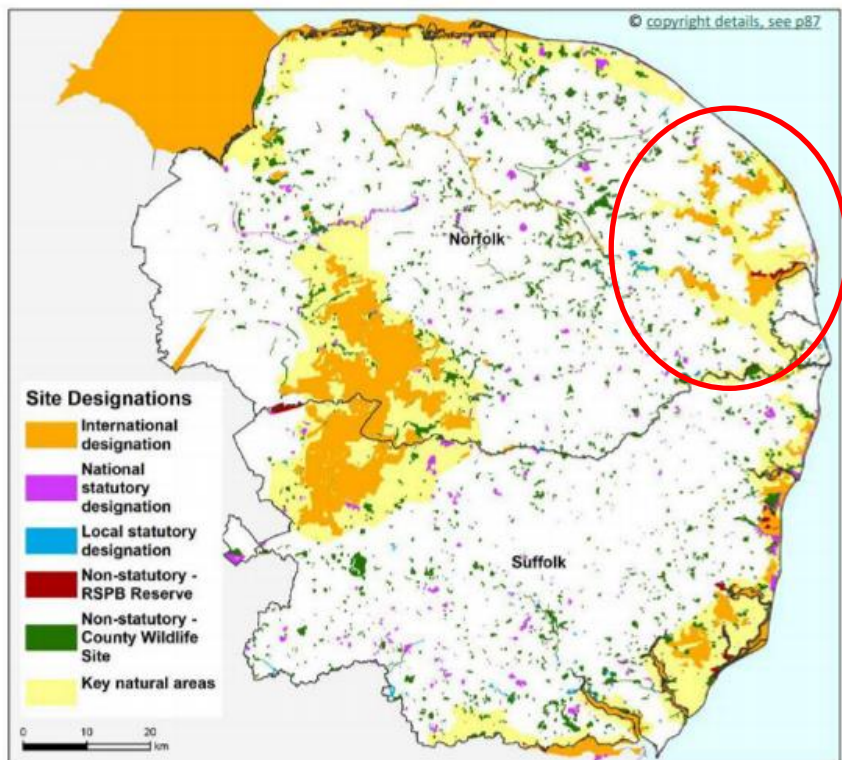
LAND TYPES BY AREA (Ha)	Norfolk	Suffolk	England TOTAL	The Brecks	Broads NP	N&S AONBs TOTAL
Arable crops and Fruit	380,622	280,916	5,759,358	55,206	6,623	45,954
Pastures and Natural Grassland	71,618	41,734	3,967,464	15,077	15,358	14,336
Heaths (Mountains, Moors & Heaths)	1,198	1,732	671,428	407	111	1,935
Woodlands	35,814	20,443	831,116	24,532	2,371	9,481
Freshwaters	7,445	2,677	77,755	240	4,640	2,634
Coastal Margins	3,674	1,587	49,046	0	501	14,460
Urban and Human Activities	37,477	31,020	1,696,614	6,465	547	5,019
Unclassified	164	60	1,679	0	-1	369
TOTAL AREA	538,011	380,169	13,054,460	101,926	30,151	94,187

A2.3. Land under conservation management

Map 2 shows how much of the Broads (circled in red) and the wider local area are under conservation management (map taken from [Natural Capital Evidence Compendium for Norfolk and Suffolk 2020](#)). This shows that a lot of the Broads is under an international designation.

Map 2

Broads area under conservation management



A2.4. Landscape

The Broads is considered to be the UK's premier wetland and is part of a global network of protected landscapes. Its national designation, equivalent to a national park, both reflects its landscape value and provides the highest level of landscape protection under national planning policy. The Broads has a largely undeveloped yet highly managed landscape of water, fens, marshes and woodland. The 2.7 km long coastal strip at Winterton is also part of the North Norfolk Coast Area of Outstanding Natural Beauty.

'Landscape' is a term with a variety of meanings. It can include components such as visual amenity, character, integrity and sensory factors, which are harder to identify and quantify than a view, and consequently more sensitive and vulnerable to change. Anecdotal evidence suggests a continuing incremental change to some aspects of the Broads' landscape.

Although the area benefits from protection, there are pressures from development, including large scale housing development planned for the areas outside but close to the Broads, which could adversely affect the landscape of the area. In the past the area has been threatened by, for instance, the impact of intensive agriculture. To counter this, Halvergate Marshes became the birthplace of agri-environment support, with the Broads Grazing Marsh Scheme which lead to the Environmentally Sensitive Area (ESA) scheme – the total

area eligible for grant support was 32,400 ha (75% of the wider ESA). The recent ELM scheme has been developed by Defra to provide public benefits such as sustainable farming, nature recovery and landscape recovery.

Above all, it is the landscape of the Broads that gives rise to the unique character and distinctiveness of the area. One of the main issues for the Broads Plan and the Local Plan, therefore, is the need to protect the landscape character, and to conserve the Broads as a living, working landscape.

A2.5. Cultural heritage

The historic landscape reflects patterns of human activity over hundreds of years, and contains distinctive landscape features particular to the area. These include drainage mills, waterside chalets and villages with houses of brick and thatch. This unique environment has a high economic value, attracting business and tourism to the area.

The built and historic environment are important parts of the cultural landscape and reflect the activities of people living and working in the Broads over time; for example, there are over 70 surviving drainage mills. Together these contribute significantly to the character and distinctiveness of the Broads.

There is evidence that there has been gradual erosion of the Broads' historical assets, and of the quality and distinctiveness of the built environment. Successive development plans and management plans for the Broads have recognised the need to protect and enhance the historic and cultural landscape of the area, which is as important as its natural assets. Nevertheless, it is essential that these general aims be framed within the context of a changing Broads. It is neither possible nor desirable to protect the area exactly as it is now, but it is feasible to maintain the best elements and enhance those that have been degraded. Enhancement may necessitate a dramatic change in management in certain areas.

Conservation Area Appraisals reviewed

(Source: Broads Authority)

- 2021: Horning Conservation Area ready to be consulted
- 2021: Belaugh Conservation Area re-appraisal to be consulted upon May-June 2021
- 2021: Halvergate and Tunstall Conservation Area re-appraisal being prepared
- 2020: Ludham Conservation Area adopted
- 2018-2019: Somerton Conservation Area adopted
- 2016-2017: Loddon and Chedgrave Conservation Area re-appraisal adopted, Stalham Staithe Conservation Area re-appraisal adopted
- 2015-2016: Oulton Broad Conservation Area re-appraisal adopted
- 2014-2015: Beccles and Halvergate Marshes Conservation Area re-appraisals were adopted
- 2013- 2014: Langley Abbey re-appraisal adopted
- 2012-2013: Ellingham, Ditchingham Dam and Geldeston Conservation Areas re-appraisals adopted

- 2011-2012: Neatishead and Somerleyton Conservation Areas re-appraisals adopted
- 2010-2011: Belaugh and Wroxham Conservation Areas re-appraisals adopted

Number of Listed Buildings at Risk

(Source: Broads Authority)

- 2020-2021: 18
- 2019- 2020: 18
- 2018 - 2019: 18
- 2017 - 2018: 22
- 2016 - 2017: 26
- 2015 - 2016: 28
- 2014 - 2015: 28
- 2013 - 2014: 29
- 2012 - 2013: 26
- 2011 - 2012: 37
- 2010 - 2011: 49

A2.7. Geodiversity

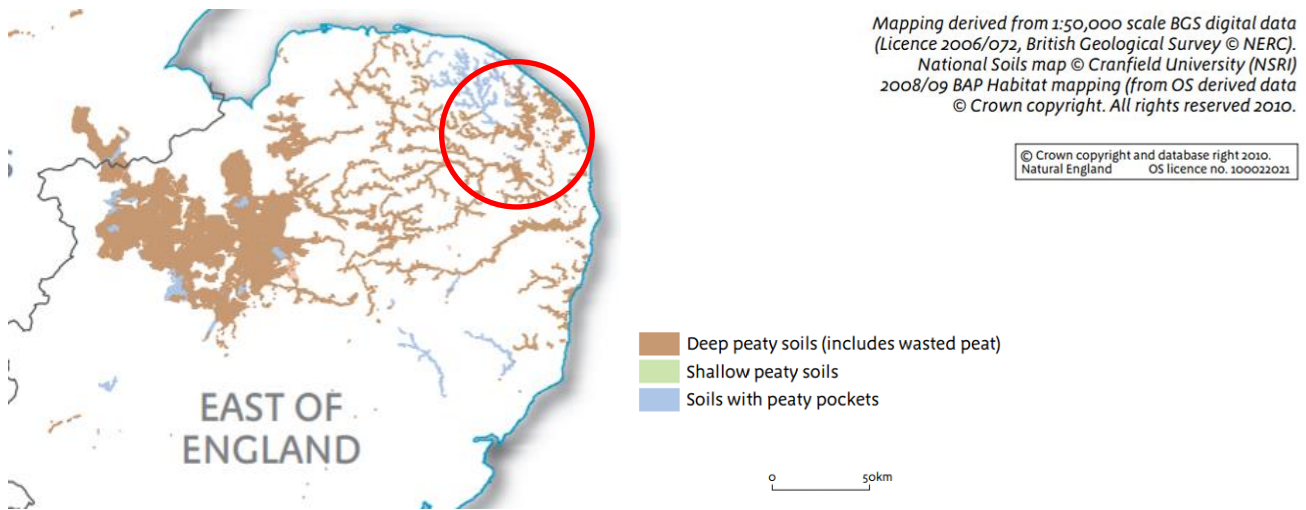
Peat

England's deep peatlands cover much of our uplands, but also include large lowland areas. Shallower peaty soils fringe the uplands. Map 3 shows the general areas of peat around the Broads (circled in red).

Map 3

Areas of peat around the Broads

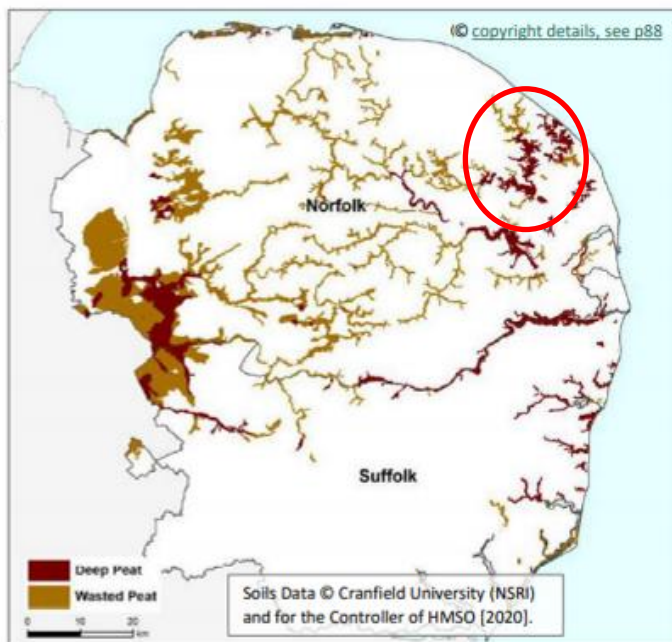
Source: [England's peatlands – carbon storage and greenhouse gases, Natural England \(2010\)](#).



Map 4a, taken from [Natural Capital Evidence Compendium for Norfolk and Suffolk](#) (2020), shows the location of deep and wasted peat (Broads area circled in red). Map 4b shows data gained from peat coring and is from [Assessing carbon stocks within the peat of the Broads National Park](#) (2021).

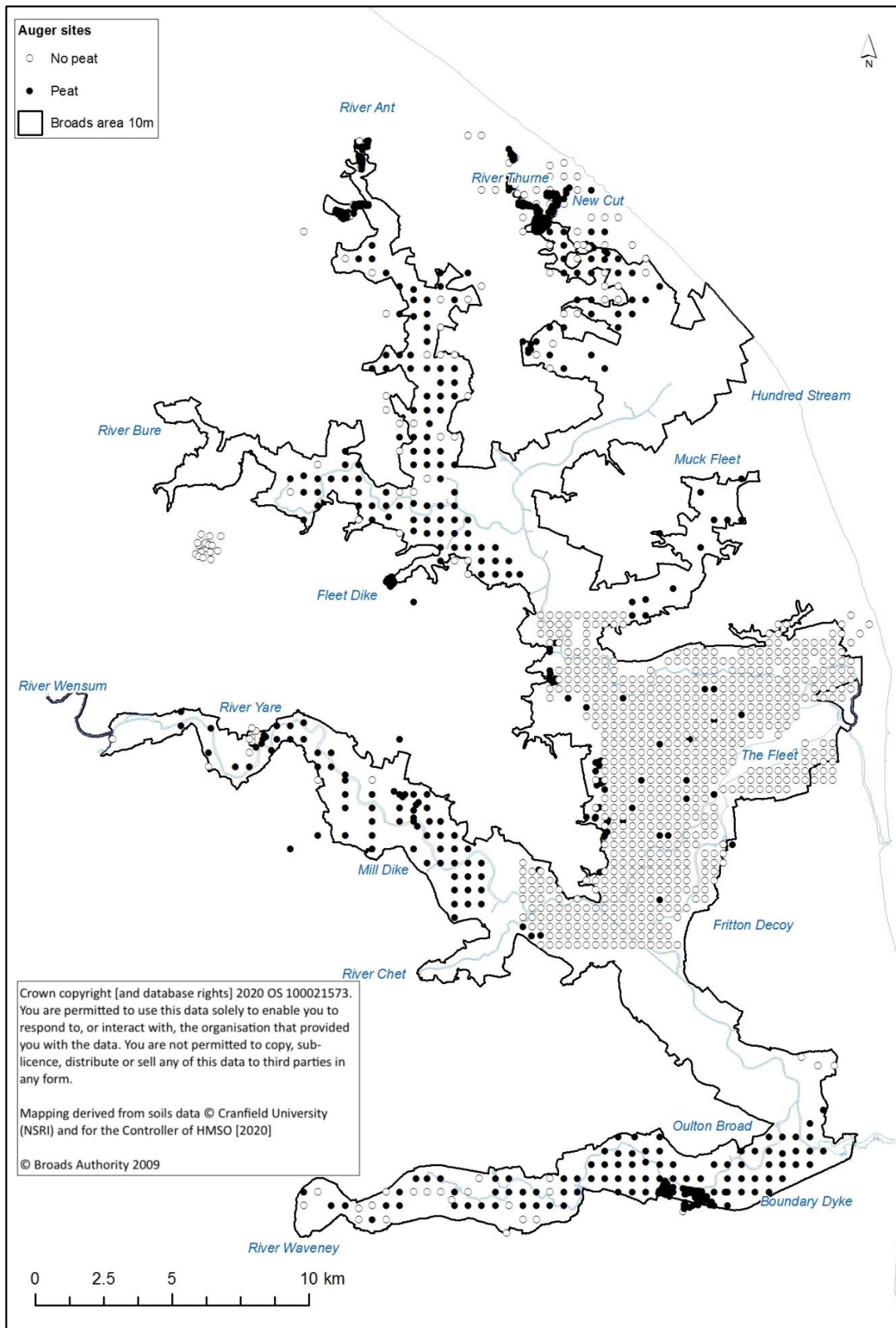
Map 4a

Location of deep and wasted peat



Map 4b

Peat coring



Bedrock and soils

Maps 5a and 5b show that the Broads lie on Crag Group bedrock and Aluvium soil. Source: [Norfolk's Earth Heritage - valuing our geodiversity](#) (2010).

Map 5a

Bedrock deposits

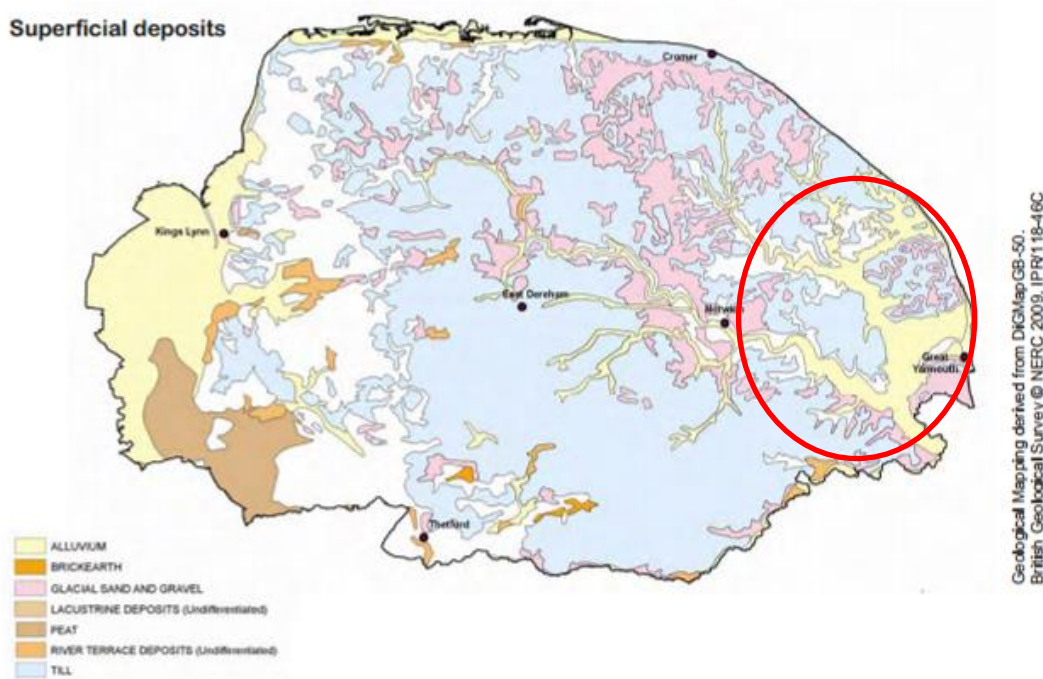
Bedrock deposits



Map 5b

Bedrock deposits - superficial

Superficial deposits



Soils

The Agricultural Land Class map shows that the majority of the Broads area is Grade 3.

2.7. Water

Water is an essential natural resource, but especially important for the Broads as a sensitive wetland. Before reaching the Broads, its rivers drain large parts of Norfolk and Suffolk, including some of the most built up areas and those planned to receive major growth in housing and other development. The Broads therefore remains vulnerable to impacts of upstream abstraction and pollution. In the East of England there is a deficiency between demand for water and supply; influx during the tourist season will only exacerbate the problem.

Water supply

Source: [Anglian Water Resource Management Plan 2019](#)

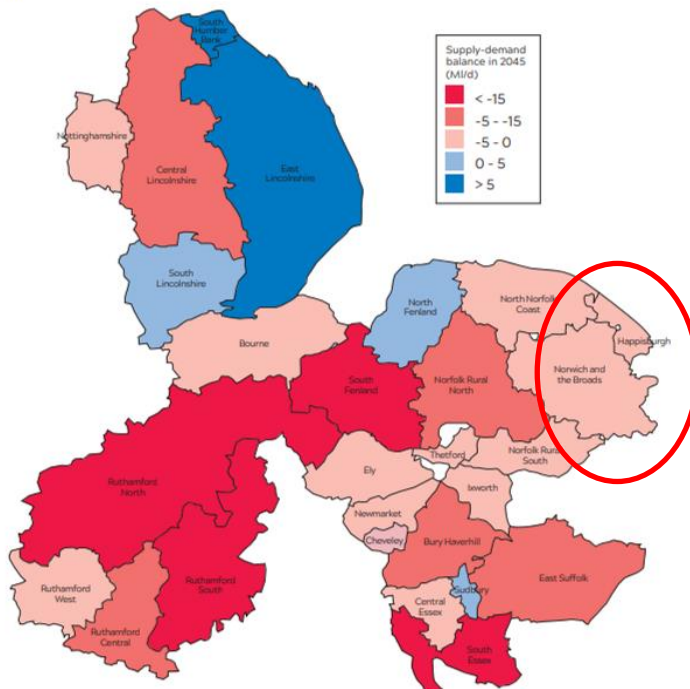
Map 6 shows that the Norwich and the Broads zone will be in deficit by 2045.

‘Impacts are not distributed evenly; some Water Resource Zones (WRZs) are affected more than others. Central Lincolnshire, Ruthamford North and South, South Fenland, Bury Haverhill, East Suffolk and South Essex are particularly affected. By 2045, only six WRZs remain in surplus: East Lincolnshire, South Lincolnshire, North Fenland, Sudbury, South Humber Bank and Hartlepool’.

Map 6

Water supply demand balance in 2045

Baseline supply-demand balance in 2044-45 (DYAA scenario)



Part of the Broads is covered by Essex & Suffolk Water, and their [WRMP](#) is shown in Table 3.

Table 3

Suffolk Northern Central balance of supply

Table 8.4: Suffolk Northern Central balance of supply

Northern Central WRZ	End of AMP6	End of AMP7	End of AMP8	End of AMP9	End of AMP10	End of Planning Horizon	End of 40 Year Planning Horizon
Year	2019/20	2024/25	2029/30	2034/35	2039/40	2044/45	2059/60
Balance of Supply (excluding headroom)	23.93	24.03	23.95	23.62	22.91	22.13	19.97
Balance of Supply (including headroom)	19.16	18.66	18.93	18.93	18.42	17.76	15.99

The balance of supply with target headroom ranges from 19.16 MI/d at the end of AMP6 to 17.76 MI/d at the end of the 25 year planning horizon and 15.99 MI/d at the end of the 40year planning horizon.

Given the supply surplus, no supply or demand schemes will be required.

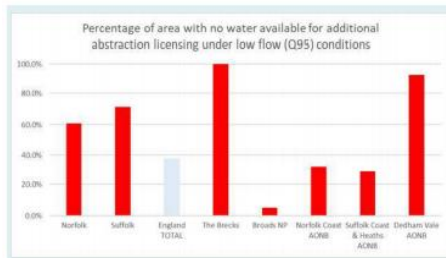
Figure 1 is taken from the [Natural Capital Evidence Compendium for Norfolk and Suffolk \(2020\)](#).

Figure 1

Water related information, including pressures and responses.

Water Resources East (WRE) is the organisation tasked under the National Framework for Water Resources (EA, 2020) with producing an integrated water resource plan for eastern England. The WRE initial position statement (2020) includes an assessment of the current and future supply-demand balance based on water company Water Resource Management Plans, taking into consideration climate change impacts, abstraction reductions in environmentally-sensitive areas, and demand considerations based on forecasted economic growth and development. The maps on the right show the current supply-demand status and projections out to 2040. Across the whole region there is a **net projected deficit of around -200 MI/d by 2050** (WRE, 2020).

Water Use: (Baseline 2020/21): “On an average day, in a dry year, the total consumptive demand for water in the WRE region is equivalent to 2,311 million litres (megalitres) per day. Most of this water (85%) is used for **public water supply**. Most of the rest is used for **spray irrigation (8%), power generation (3%)** and in the **manufacturing, food and drink sectors (2%)**. (WRE, 2020 p.9)



Water Resource Availability and Abstraction Reliability Cycle 2 data (EA, 2019), indicates the current demand stress on water for irrigation. Norfolk and Suffolk both have a greater area of land where additional water is not available for abstraction than the average for England. This is most critical for The Brecks and Dedham Vale AONB.



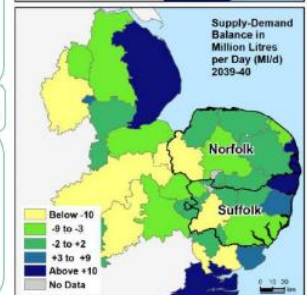
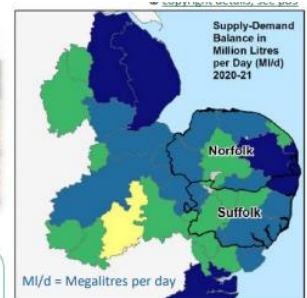
Pressures

- Driest region in the UK
- Highest forecast growth outside London
- Internationally important natural habitats
- Leading agricultural producer
- Tension between water needed for the environment, public supply and irrigation
- Little surplus water currently available

Responses

- Increase efficiency of all water users
- Promote need for additional water storage within the landscape through opportunities to link water scarcity with flood risk management solutions
- Transfer water from areas of surplus to areas of deficit, increasing connectivity and maximising open water channels
- Explore other technologies, e.g. water transfers, desalination and water re-use.

Source: WRE (2020)



Water quality

Water quality is a key issue for the Broads. Poor water quality had become a serious problem in the Broads in the mid to late 20th century, affecting both biodiversity and recreational enjoyment. Sustained efforts on particular water bodies and on reducing pollution inputs from agricultural and waste water sources have produced major improvements to date, but more remains to be done. Both maintenance of previous gains and further improvements depend on Asset Management Planning schemes, the Review of Abstraction Consents, Catchment Sensitive Farming Projects and control and co-ordination of development over the Broads and beyond. The Norwich Growth Area Water Cycle Study is an important component of the latter.

Water is essential for wetland habitats and species. The Broads is rich in wetland and related habitats including wet woodland, grazing marsh, reedbed, lakes, and fen. Many animal and plant species supported by these are important in national and European terms.

The majority of the water bodies in the Broads are rated as Moderate, with some as poor and some as bad.

Water management is also important for biodiversity within drained areas. Management of water levels and the poor-quality river water has continued to significantly constrain the environmental potential of the Broads. SSSIs in unfavourable condition in the Broads are due mainly to the impacts of water pollution and water management problems on biodiversity. Some of this will be addressed by Internal Drainage Board investment and agri-environment schemes.

Water quality (particularly phosphate levels) in parts of the Broads improved since the 1970s, helped by improvements and new initiatives in sewage treatment and agri-environmental practices. However, in most recent decades, further improvements have not occurred and levels have largely stabilised. WFD targets measure 30 different elements with a principle of 'one out, all out' (i.e. the poorest individual result drives the overall classification). The lake specific targets for Natura 2000 Protected Area - Special Areas of Conservation (SACs) - requires a lower level of phosphate. As many of these lakes are connected to their river catchments, achievement of the SAC target requires that all factors that affect phosphates are regulated throughout the catchment, including development⁸. In March 2022, Natural England released nutrient neutrality advice that requires competent authorities under the Habitats Regulations to carefully consider the nutrient impacts of any new planning applications and projects on habitats sites, and whether those impacts may have an adverse effect on the integrity of a habitats site that requires mitigation.

Map 7 shows the ecological status of waterbodies in the Broads (and wider area) in 2019 as moderate.

⁸ [Proposed total phosphorus targets for Lake Natura 2000 Protected Area Special Areas of Conservation for the updated river basin management plan consultation \(naturalengland.org.uk\)](https://www.naturalengland.org.uk)

Map 7

Ecological status of waterbodies in the Broads



Nitrate Vulnerable Zones and Drinking Water Safeguard Zones

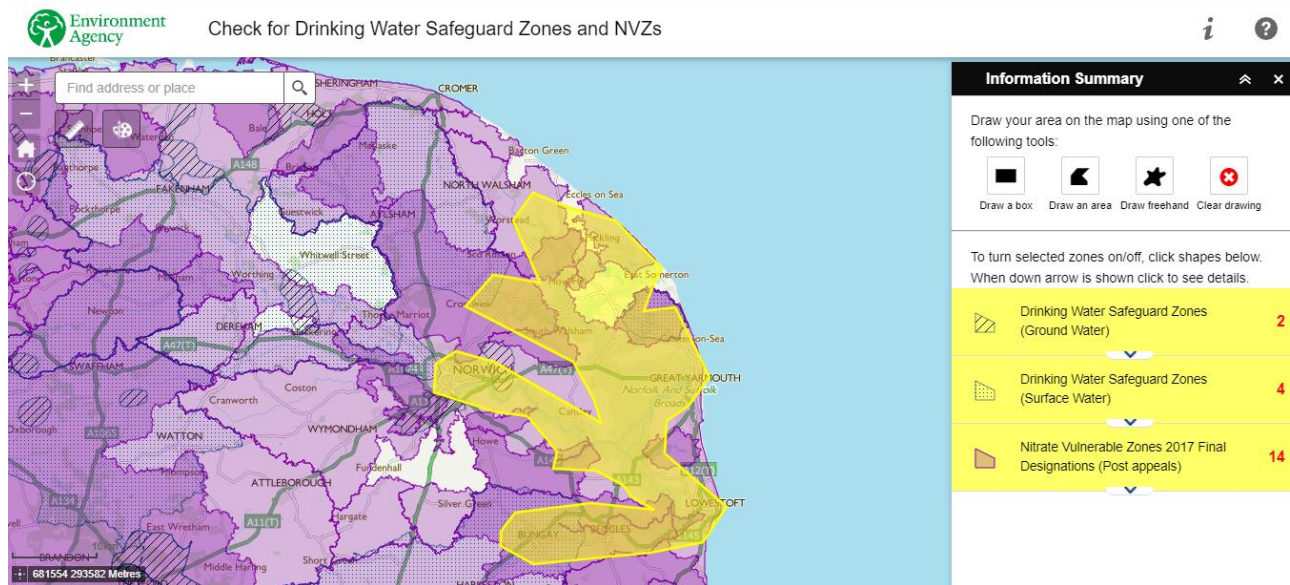
A Nitrate Vulnerable Zone (NVZ) is designated where land drains and contributes to the nitrate found in “polluted” waters. Polluted waters include:

- Surface or ground waters that contain at least 50mg per litre (mg/l) nitrate
- Surface or ground waters that are likely to contain at least 50mg/l nitrate if no action is taken
- Waters which are eutrophic, or are likely to become eutrophic if no action is taken

Drinking Water Safeguard Zones are designated areas in which the use of certain substances (including fertilisers, pesticides or other chemicals) must be carefully managed to prevent the pollution of water that is abstracted for use as drinking water.

Map 8

Drinking water safeguard zones and nitrate vulnerable zones



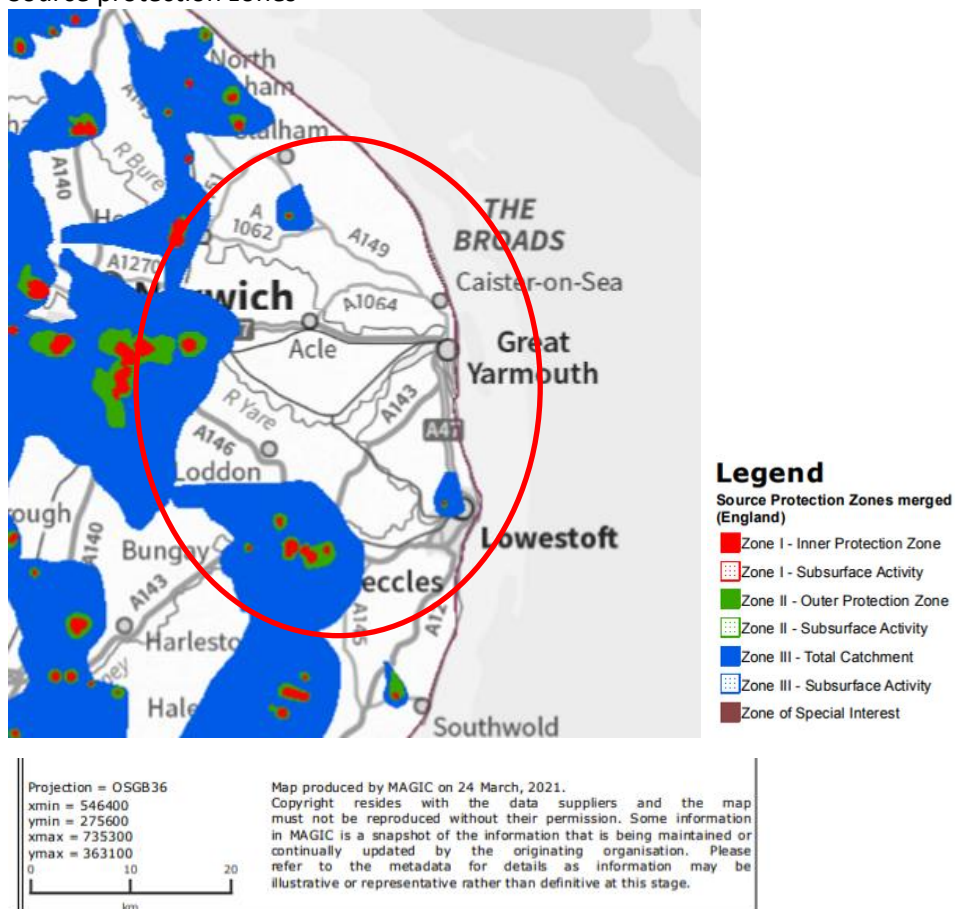
Source: [Check for Drinking Water Safeguard Zones and NVZs \(data.gov.uk\)](https://data.gov.uk)

Source Protection Zones

The Environment Agency has defined Source Protection Zones (SPZs) for 2000 groundwater sources such as wells, boreholes and springs used for public drinking water supply. These zones show the risk of contamination from any activities that might cause pollution in the area. The closer the activity, the greater the risk. The maps show three main zones (inner, outer and total catchment) and a fourth zone of special interest, which we occasionally apply, to a groundwater - see map 9. Source: [Magic Map Application \(defra.gov.uk\)](https://defra.gov.uk).

Map 9

Source protection zones



A2.8. Climate change

Climate change and the emissions of greenhouse gases that contribute to climate change are a matter of concern for the Broads Authority, both in terms of mitigation and adaptation to climate change. Our approach is not to assign blame to a particular group, but it is worth noting that two significant direct emitters are the traffic on the A47 and Cantley Sugar Factory.

Figure 2 includes graphs and tables taken from [Towards a GHG Reduction Strategy for the Broads – Identifying and Prioritising Actions Final Report On Behalf of: The Broads Authority May 2010](#).

The Broads Authority has commissioned an updated carbon footprint for the Broads, which will be presented in subsequent Sustainability Appraisals.

Figure 2

Extracts from the greenhouse gas reduction strategy for the Broads.

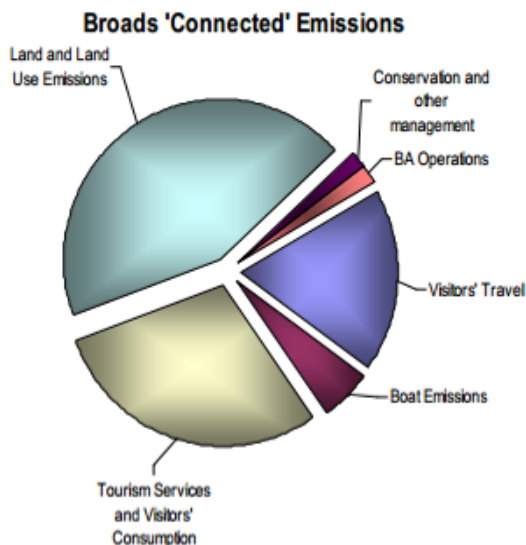
Caveats explained, the data suggests emissions at the various levels with the following approximate magnitudes:

- Broads Authority operations (Level1): **~1,900 tCO₂e³**;
- Activities and operations connected with Broads services (including the above): **~131,000 tCO₂e**; and
- Other activities in the Executive Area (but not specifically connected with the Broads itself): **~359,000 tCO₂e**.

In addition to GHG emissions, the carbon stored in soils and vegetation within the Broads Executive Area has also been estimated. This suggests a total carbon store within the Broads Executive Area of the order of **40 million tCO₂e**.

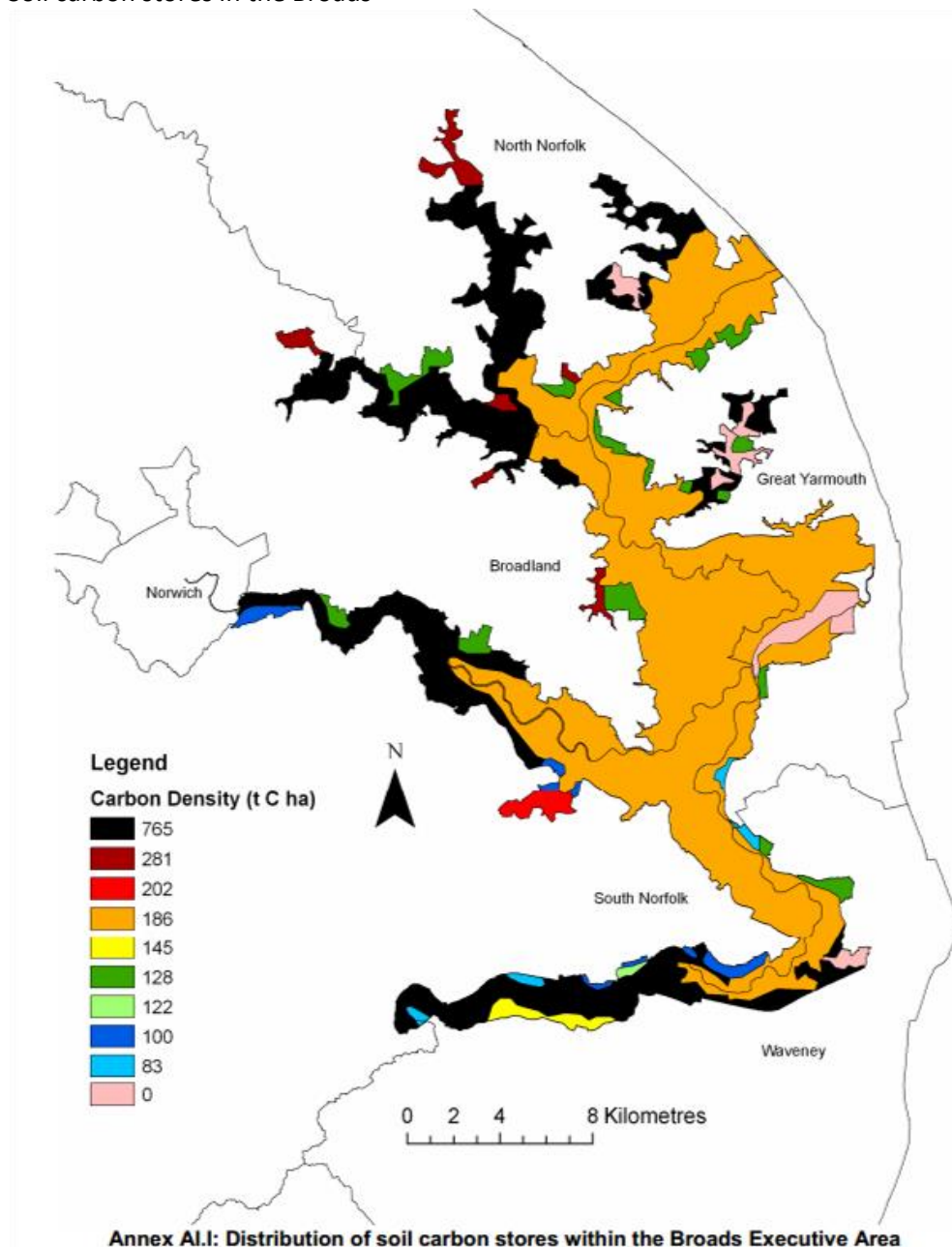
	Level 2a: estimated magnitude of GHG emissions 'connected with' the Broads	Level 1: Broads Authority Operations	1,900	131,000
			Other management and organisations	
	Tourism and Recreation	54,000		
	Land and Land Use	73,500		
Broads Emissions	Level 2b: estimated magnitude of emissions 'NOT connected with' the Broads	Emissions from industry & commerce*	75,000	360,000
		Emissions from domestic sources	55,000	
		Emissions from transport**	76,000	
		Point source emissions (British Sugar Cantley factory)	154,000	
Broads Carbon Stores	Soil	38,800,000	39,900,000	
	Vegetation	1,100,000		

BA Operations	BA Operations	1,900
Tourism and Recreation	Visitor's Transport	18,920
	Boat Emissions	5,500
	Services	30,000
Land and Land Use	Land Use Emissions	73,500
	Conservation and other management	1,900
TOTAL		~131,000



Map 10

Soil carbon stores in the Broads



A2.9. Flooding

In the longer term, a critical issue for the Broads is the potential impacts of climate change, particularly the anticipated and possible rises in sea level. These have the potential to affect the character and integrity of the area through breaches of the coast, increase water and soil salinity, and temporary and permanent flooding. More immediate issues include the protection of water resources and water quality. Elevated water levels are already a problem in many of the river valleys. Parts of the Yare Broads and Marshes SSSI, SAC, SPA and Ramsar site are already in an unfavourable condition and one of the management principles is 'Sympathetic management of water levels is necessary for the maintenance of optimal water depths

throughout the year, according to the requirements of the plant and animal species present'. A report on the future impacts of climate change on flood risk was published by the Broadland Futures Initiative (BFI).

The implementation of the Water Framework Directive will also be important. The Environment Agency produces a number of plans and programmes to address these issues. In particular, the Broadland Rivers Catchment Flood Management Plan (CFMP) and the Broadland Rivers Catchment Abstraction Management Strategy will exert a considerable influence on the Broads Plan and the Local Plan. In overall terms, this catchment-based approach to water management will be critical for the future of the Broads.

As a low-lying wetland area sited almost wholly within the flood plains of the rivers Yare, Bure, Ant, Thurne and Waveney, over [85%](#) of the Broads area is at risk from flooding. The [flood zone maps](#) produced by the 2017 and 2018 SFRA show the extent of flooding in the Broads (these are interactive PDFs, but you will need to save them first before clicking layers on or off).

Flooding can occur as a result of high river flows or, more frequently, high sea levels and the risk of flooding will increase with sea level rise, more intense rainfall and the other changes predicted as a consequence of climate change. The impacts of such flooding are often minor, as buildings and occupiers have adapted to the usually low levels and speeds of flood water in the Broads. History shows, however, that this is not always the case and the effects can occasionally be devastating to communities and to wildlife and biodiversity within the Broads, with the latter being particularly affected by saline intrusion into the freshwater system.

Flood alleviation and management are constant issues for the Broads. Much of the flooding occurs from tidal surges, which damage property and introduce brackish water into fresh water habitats. Flood defences require regular maintenance and will need to be strengthened in areas of special risk. In particular, continued flood management is required to sustain those areas that currently rely on earth embankments for flood defence.

There are c.240km of flood banks protecting approximately 21,300 hectares, almost wholly within the designated Broads area, containing more than 1,700 properties of which more than 1,000 are residential. This network of flood defences was subject to a 20-year programme (Broadland Flood Alleviation Project) of repair and strengthening.

Flood risk to existing property in the Broads area, however, remains significant and widespread. The anticipated future increase in serious flood events as a result of sea level change, climate change, and continuing settlement and erosion of flood defences, adds impetus to the need to take a very cautious approach to developing in the flood plain which makes up most of the Broads area.

As part of the BFI the Environment Agency is reviewing and updating the hydraulic modelling for fluvial, tidal and coastal flooding relevant to the Broads area. This work is underway, but due to the size of the project it is not due to be completed for some time (around the end of 2023). As well as informing the BFI this modelling will update our understanding of flood risk to communities in the Broads and help us identify locations where flood risk management could be improved.

The Environment Agency is also currently working on the following flood risk management projects in the Broads Authority area:

- Great Yarmouth flood defences Project - The EA is currently delivering the Great Yarmouth flood defences Epoch 2 (2016 –2021) project to refurbish and improve approximately 4km of flood defences and the supporting quayside in the town to help manage the flood risk to around 2000 homes and 700 businesses. Epoch 3 (2021-2026) is at an early stage of business case development. A substantial amount of partnership funding will again need to be secured in order for this project to progress as planned. Partners are beginning work to identify funding sources for Epoch 3 and to identify a sustainable income stream to meet future investment required to manage flood risk to the town.
- Beccles Flood Risk Management Project - The Environment Agency is in the early stages of a project to investigate ways to reduce the number of people and properties at risk of flooding from the River Waveney in Beccles. We have undertaken an ‘initial assessment’ report which produced a number of potential ways to improve the management of flood risk in Beccles. Options include maintaining the existing flood wall but replacing the flood boards with flood gates and individual Property Flood Resilience (PFR) measures i.e. flood doors or barriers, air brick covers. The EA will be undertaking a number of surveys and additional assessments of the existing defences in Beccles. This along with information from the flooding in December 2020 will help to inform the projects next steps.
- Bungay Flood Risk Management Project – The EA is in the early stages of a project in Bungay. They are updating our flood risk model of the River Waveney to help improve our understanding of flood risk in Bungay and the surrounding area. This update will use information obtained from the December flood event to make the modelling as representative as possible. This modelling will help inform an ‘initial assessment’ to explore options to manage the flood risk, working with the community and partners, such as East Suffolk Council, Suffolk County Council and Norfolk County Council.

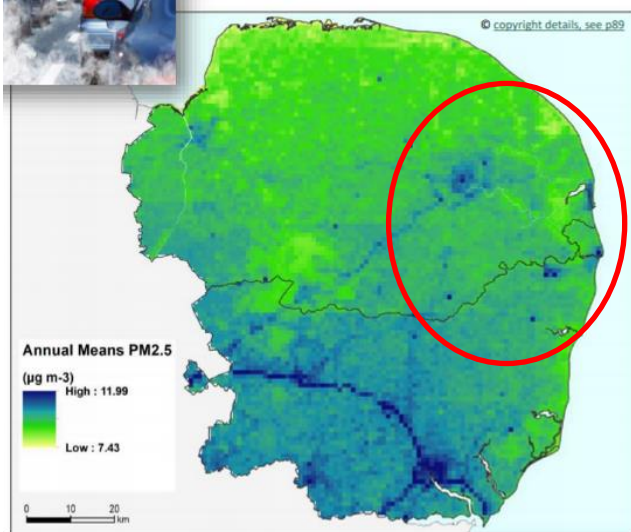
A2.10. Air

There are no air quality management areas currently declared for breaching Government objective threshold limits for air pollutants in the Broads. However, there are areas, such as just north of the bridge in Hoveton, where congested traffic has adverse air quality impacts.

Map 11 is taken from the [Natural Capital Evidence Compendium for Norfolk and Suffolk](#) (2020). It shows that the annual PM2.5 levels are greater in the urban areas.

Map 11

PM2.5 levels



The [NAEI interactive map](#) allows you to explore emissions data from the UK National Atmospheric Emissions Inventory for 2018 (the maps have not been copied over to this document).

A2.11 Material assets

Notwithstanding the generally rural and undeveloped appearance of most of the Broads, the area does contain a great deal in the way of physical infrastructure, including important sections of the road network (including the A47 Acle Straight and Postwick Bridge), railway lines, waterworks and public water supply reservoir at Trinity Broads, 240km of flood defences, a 200km navigation with around 30 bridges (including swing or lifting bridges) and many stretches of moorings.

A2.12. Minerals and waste

The Minerals and Waste designations in the Broads are shown on the following map links. The Broads Authority will consider and include such designations as it produces the Local Plan.

- [Nature conservation & heritage assets - North East](#)
- [Nature conservation & heritage assets - North West](#)
- [Nature conservation & heritage assets - South](#)

A2.13. Ecosystem services

The [Natural Capital Evidence Compendium for Norfolk and Suffolk](#) (2020) identifies ten nationally important assets such as soil quality, peat and high productive aquifers as shown on Map 12.

Map 12

National important assets

State: Nationally important assets

Norfolk and Suffolk constitute 7% of the land area of England and in 2018, supported 3% of its population. As the maps to the right show, the counties include over 10% of a variety of natural assets and protected areas. These examples span provisioning, regulating and cultural ecosystem services, as well as aspects of biodiversity and terrestrial and marine designations. The land, coast and sea of Norfolk and Suffolk therefore make a substantial contribution to the total stock of England's natural assets.

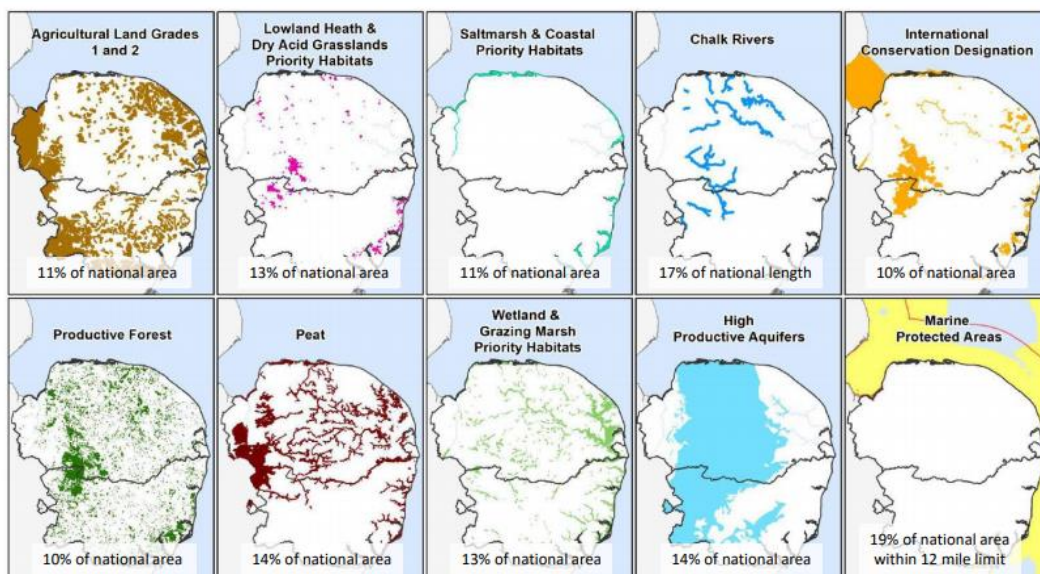


Figure 3, from the Compendium, shows the outcome of comparing the ten nationally important assets, shown above, against the key findings of the risk review.

Figure 3

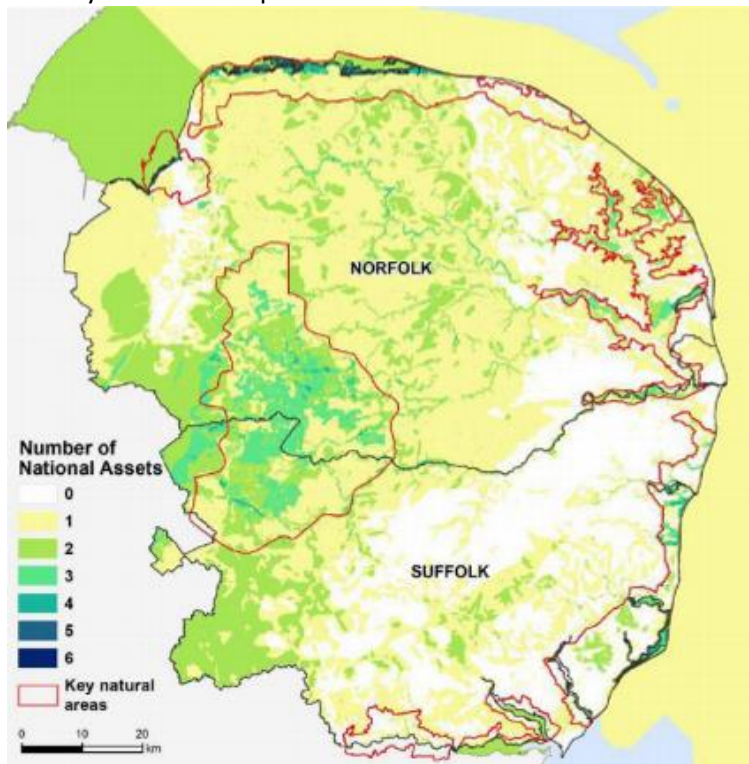
Risk of nationally important assets

Risk Category	Nationally Important Assets
High	High productive aquifers
	Peat
	Saltmarsh & coastal habitats
	Wetlands & grazing marsh
Medium	Grade 1 & 2 agricultural land
	Productive forest
	Chalk rivers
	Marine Protected Areas
Low	International conservation designations
	Lowland heath & dry acid grasslands

Map 13 overlays the ten important assets and shows that much of the Broads is covered by at least one asset. The Compendium suggests that 'initiatives in areas currently without such assets (the 'white space' on the map) might well improve quality further afield and indeed may be places where the greatest benefits could be achieved from investments in the local environment'.

Map 13

Overlay of the ten important assets

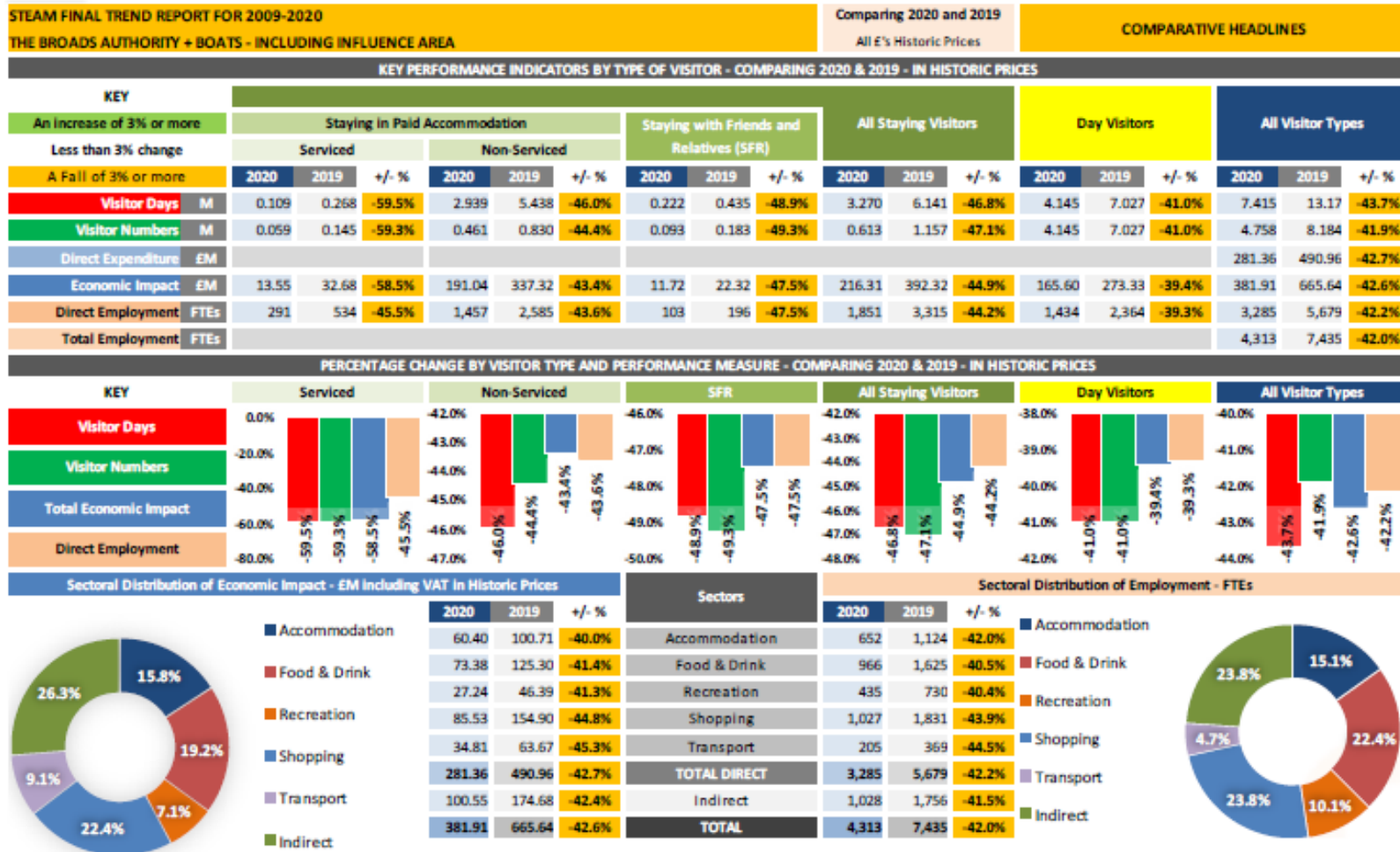


A2.14 Recreation and economy

Figure 4 is taken from the STEAM report [2020](#), and shows facts and figures about tourism in the Broads and surrounding area (known as the 'area of influence').

Figure 4

STEAM report data from 2020 comparing indicators with the same indicators in 2019. Covid-19 restrictions of access and movement during much of 2020 significantly impacted figures for that year.



A2.15 Demographic profile

According to the 2011 Census, the population of the Broads Executive Area was 6,300, which was 6.7% (400 people) greater than at the 2001 Census. With an area of 290 km², the population density is 21.7 per km². The population is markedly elderly, as shown in Graph 1.

Graph 1

Census age profile

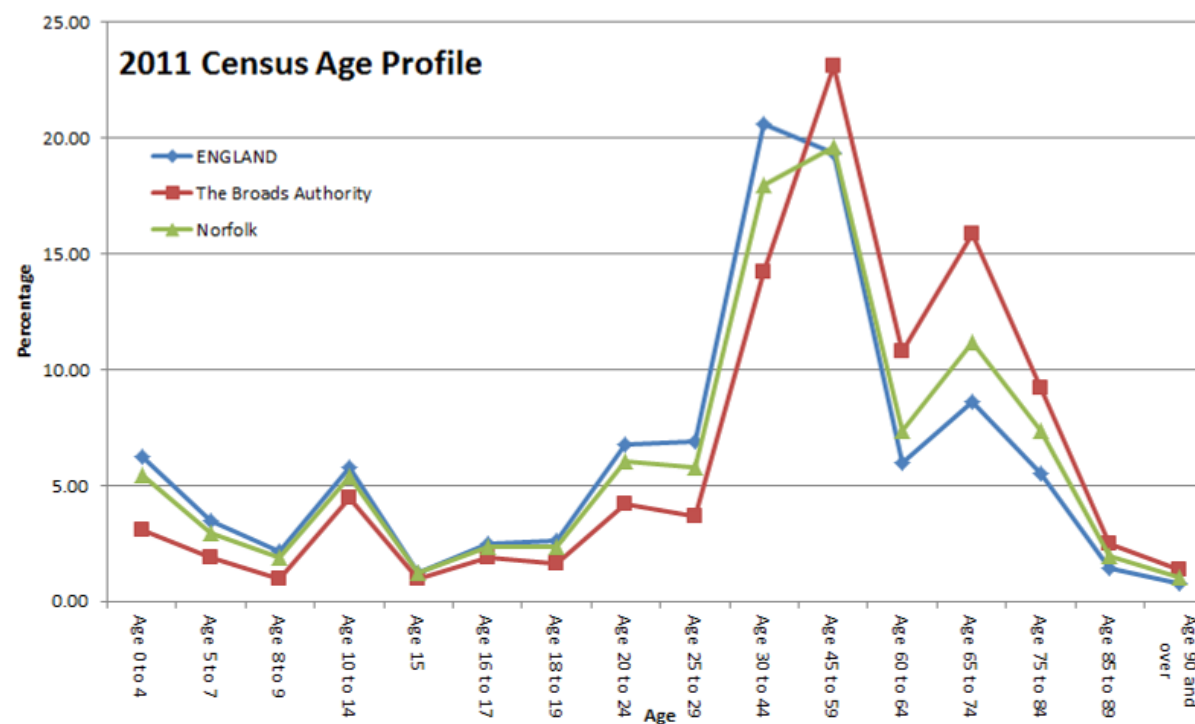


Table 4

Population comparisons between 2001 and 2011 Census

2001 pop	2011 pop	Pop change	Pop change (%)	Area (km ²)	2011 Pop density (per km ²)
5,900	6,300	400	6.7	290	21.7

Compared to the other National Parks, the Broads has the second greatest increase in population (South Downs increase was 6.8%; in contrast, Exmoor had a 5.5% decrease in population). The % change in size of usual resident population by age between 2001 and 2011 (Census 2011 data) is in Table 5. Compared to the other National Parks, the Broads had the greatest increase in change in the age category 75 and over.

Table 5

Percentage change in size of usual resident population by age between 2001 and 2011

Age	0 - 14	15 - 29	30 - 44	45 - 59	60 - 74	75 and over
Change	-11.4	6.7	-13.8	-5.0	41.6	23.8

The Broads Authority Executive Area has the least percentage of households with dependent children when compared to the national average, neighbouring districts and other National Parks. Table 6 shows data from the 2011 Census.

Table 6

Percentage of households with dependent children

Area	Dependent children in household: All ages %	Dependent children in household: Age 0 to 4 %
Broads Authority	16.2	5.2
National Park average	21.7	7.1
Broadland	26.3	9
Great Yarmouth	27.6	10.6
South Norfolk	26.7	10
North Norfolk	20.7	7.4
Waveney	25.3	9.7
Norwich	23.3	11
England	29.1	11.8

Table 7 shows country of birth (2011 Census). The Broads Authority Executive Area is similar to the other more rural districts in Norfolk.

Table 7

Country of birth (percentages)

Area	England	Northern Ireland	Scotland	Wales	UK not otherwise specified	Ireland	Other EU	Other countries
Broads Authority	93.4	0.1	1.2	0.7	0.0	0.3	1.6	2.7
National Park Average	78.3	0.29	1.65	14.78	0.01	0.34	1.73	2.86
Broadland	93.6	0.3	1.3	0.7	0	0.3	1.4	2.5
Great Yarmouth	91.3	0.3	1.4	0.5	0	0.4	3.5	2.7
South Norfolk	92.9	0.3	1.3	0.7	0	0.3	1.8	2.8
North Norfolk	93.6	0.3	1.2	0.8	0	0.3	1.7	2.1
Waveney	94	0.2	1.3	0.7	0	0.3	1.5	2
Norwich	84.8	0.4	1.3	0.6	0	0.5	4.6	7.8
England	83.5	0.4	1.3	1	0	0.7	1.9	9.4

A2.16 Economic activity

Table 8 shows the economically active and inactive in the Broads (2011 Census).

Table 8

Economically active and inactive according to the 2011 Census (%)

Area	Part-time	Full-time	Self-employed	Unemployed	F/T student
Broads Authority	13.1	30.9	16.3	3.0	1.7
National Park average	13.9	30.5	20.1	2.4	1.9
England	13.7	38.6	9.8	4.4	3.4

The Broads area is on a par with other National Parks. Like the National Park average, the Broads has fewer full-time workers, but more people self-employed when compared to England's average.

Table 9

Economically inactive and unemployed

Area	Economically inactive %					Unemployed %	
	Retired	Student	Looking after home or family	Long-term sick or disabled	Other	Never worked	Long-term
Broads Authority	24.2	2.6	3.1	3.5	1.5	0.3	1.0
National Park average	20.3	3.3	3.1	2.8	1.6	0.2	0.9
England	13.7	5.8	4.4	4.0	0.8	0.7	1.7

The Broads area has a higher proportion of retirees and a lower proportion of students compared to the National Park average and to England.

Table 10

Professions

Area	Managers, directors, senior officials	Professional	Associate professional and technical	Admin and secretarial	Skilled trades	Caring, leisure and other service	Sales and customer service	Process, plant and machine operatives	Elementary
Broads Authority	18.1	16.4	11.0	10.2	14.4	9.0	5.5	5.9	9.4
National Park average	15.3	17.4	10.5	8.5	18.9	8.5	5.3	5.1	10.4
England	10.9	17.5	12.8	11.5	11.4	9.3	8.4	7.2	11.1

According to the 2011 Census, the Broads shows a higher proportion of Managerial occupations and a lower proportion of Elementary occupations when compared to both England and other National Parks.

Table 11

Detailed occupation data

Area name	A Agriculture, forestry and fishing	B Mining and quarrying	C Manufacturing	D Electricity, gas, steam and air conditioning supply	E Water supply; sewerage, waste management and remediation activities	F Construction	G Wholesale and retail trade; repair of motor vehicles and motor cycles	H Transport and storage	I Accommodation and food service activities	J Information and communication	K Financial and insurance activities	L Real estate activities	M Professional, scientific and technical activities	N Administrative and support service activities	O Public administration and defence; compulsory social security	P Education	Q Human health and social work activities	R, S, T, U Other
The Broads Authority	3.8	0.9	9.7	0.4	0.8	7.8	13.9	3.6	7.2	2.6	3.1	1.6	6.7	5.5	4.9	9.3	12.5	5.8
National Park Average	7.5	0.5	6.9	0.4	0.6	8.1	12.9	3.0	10.7	2.4	1.9	1.6	6.4	4.2	5.1	10.3	11.4	5.9
Broadland	1.4	0.3	8.8	0.5	0.7	9.7	17.6	4.0	4.8	2.6	6.4	1.4	5.2	4.1	5.8	8.9	13.3	4.6
Great Yarmouth	1.1	1.6	9.4	0.6	0.7	8.1	18.0	4.9	9.5	1.2	2.0	0.9	4.8	4.7	4.4	7.7	14.7	5.4
North Norfolk	3.7	0.3	9.3	0.5	0.7	9.1	17.5	3.7	7.9	1.6	2.3	1.4	4.9	4.6	4.2	9.2	13.1	5.8
Norwich	0.3	0.1	6.9	0.2	0.6	6.3	17.2	3.6	7.5	3.4	6.4	1.3	5.9	4.7	4.7	11.5	13.9	5.5
South Norfolk	3.0	0.2	9.3	0.3	0.6	8.8	16.1	3.8	4.3	2.5	5.2	1.6	6.5	3.9	5.4	10.6	13.4	4.5
Waveney	1.6	1.1	11.6	1.1	1.1	9.3	17.4	4.1	7.1	1.4	2.0	1.2	5.1	4.5	4.8	9.0	12.9	4.8

More detailed occupation data from the 2011 census shows the main industry in the Broads wholesale and retail trade.

Table 12 shows out of work claimants for February and October 2021 (the trend can be seen on [nomisweb](#) by adding the ward name). Rates are high at the moment, which may be as a result of Covid-19 restrictions.

Table 12

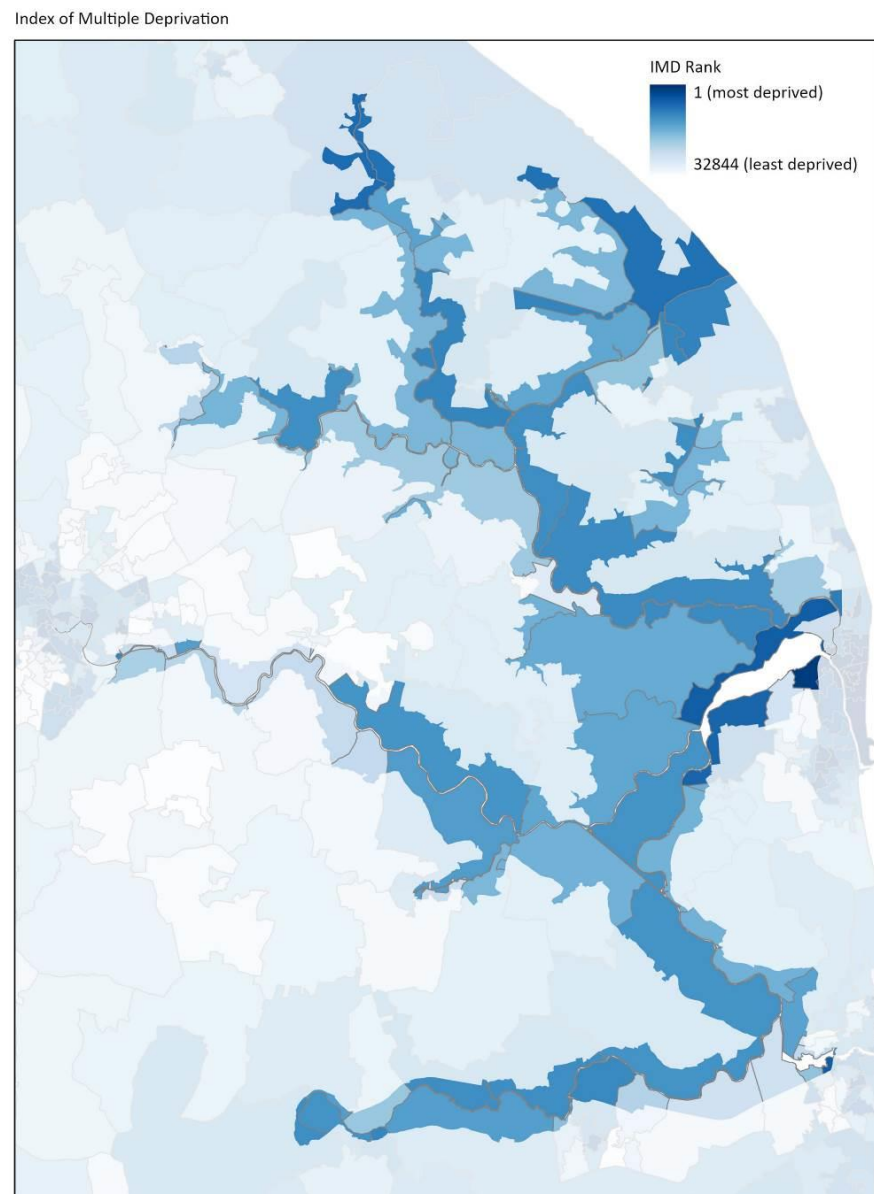
Out of work benefits claimants

Ward	Out of work benefits Feb 2021	Out of work benefits Oct 2021
33UCGN: Acle	4.3%	2.7%
33UCGQ: Blofield with South Walsham	3.4%	1.9%
33UCGR: Brundall	4.1%	2.6%
33UCGT: Buxton	2.7%	2.0%
33UCGU: Coltishall	3.8%	2.6%
33UCHE: Marshes	3.9%	2.6%
33UCHQ: Thorpe St Andrew South East	4.2%	2.5%
33UCHR: Wroxham	3.7%	1.8%
33UDFY: Bradwell North	4.3%	2.3%
33UDGB: Caister South	6.4%	4.0%
33UDGE: East Flegg	6.7%	2.9%
33UDGF: Fleggburgh	4.3%	3.0%
33UDGL: Ormesby	6.3%	3.7%
33UDGP: West Flegg	5.1%	2.9%
33UFGY: Happisburgh	4.9%	3.0%
33UFHB: Hoveton	5.1%	3.2%
33UFHM: Scottow	3.1%	1.7%
33UFHR: Stalham and Sutton	5.6%	3.8%
33UFHX: Waterside	4.9%	2.8%
33UFHY: Waxham	4.9%	2.4%
33UHHA: Chedgrave and Thurton	4.9%	3.5%
33UHHF: Ditchingham and Broome	2.7%	2.3%
33UHHG: Earsham	3.3%	3.1%
33UHHK: Gillingham	4.4%	3.4%
33UHHQ: Loddon	5.2%	3.4%
33UHHY: Rockland	3.3%	2.7%

Ward	Out of work benefits Feb 2021	Out of work benefits Oct 2021
33UHJC: Stoke Holy Cross	3.1%	2.3%
33UHJF: Thurlton	4.6%	2.4%
42UHFY: Beccles North	5.8%	2.4%
42UHGB: Bungay	5.7%	4.4%
42UHGD: Carlton Colville	3.7%	2.8%
42UHGE: Gunton and Corton	4.6%	2.4%
42UHGK: Lothingland (GYBC)	6.4%	3.6%
42UHGN: Oulton Broad (Whitton)	5.1%	3.5%
42UHGT: Wainford	4.2%	3.1%
42UHGW: Worlingham	3.3%	2.2%

A2.17 Deprivation

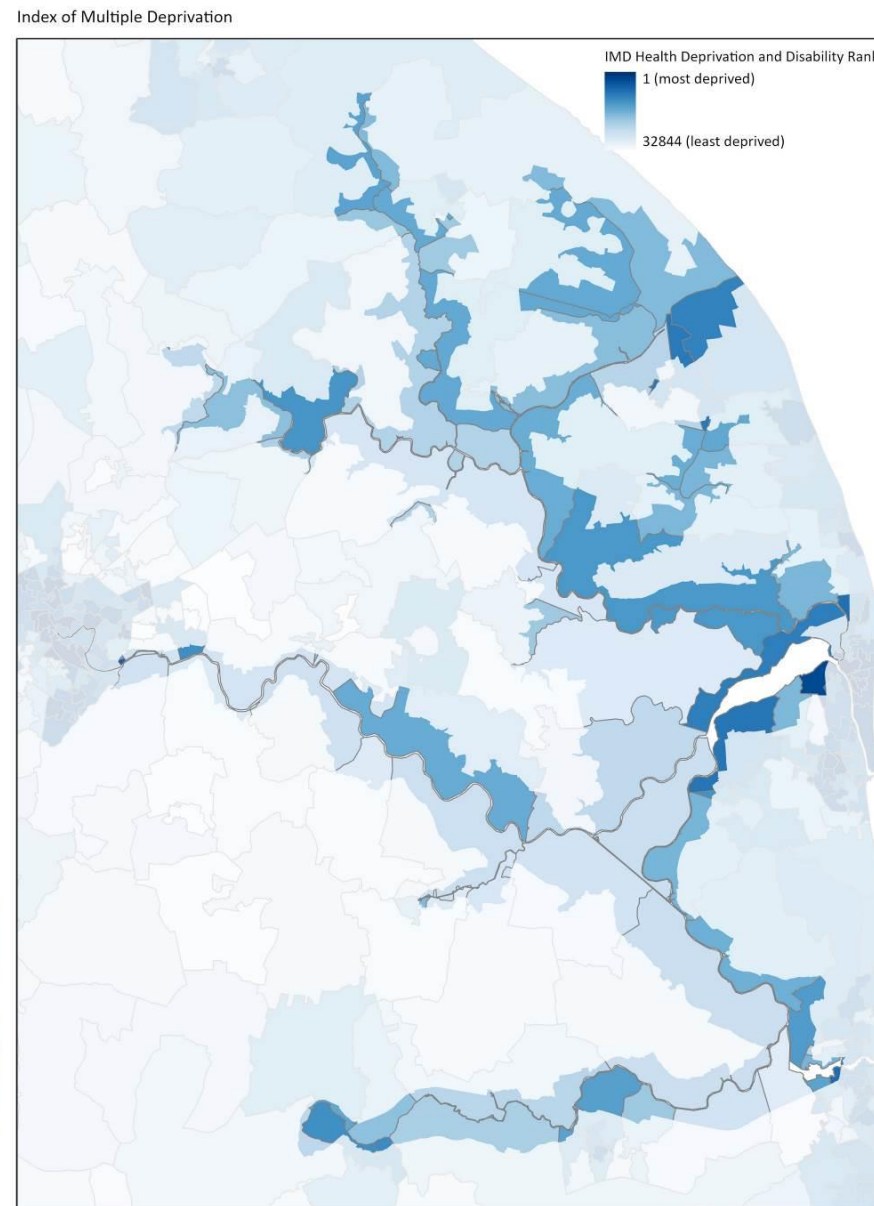
Indices of Multiple Deprivation (IMD) are often used to highlight those areas most likely to suffer from social exclusion. Maps 13, 14 and 15 reflect the most recent IMD data (2019) at Lower Super Output Area. The English IMD 2019 provide a relative measure of deprivation at small area level across England. Areas are ranked from least deprived (green) to most deprived (red) on seven different dimensions and an overall composite measure of multiple deprivation.



Ministry of Housing Communities and Local Government. Contains National Statistics data. Contains public sector information licensed under the Open Government Licence v3.0. © Crown copyright and database rights 2020 OS 100021573.

Map 13

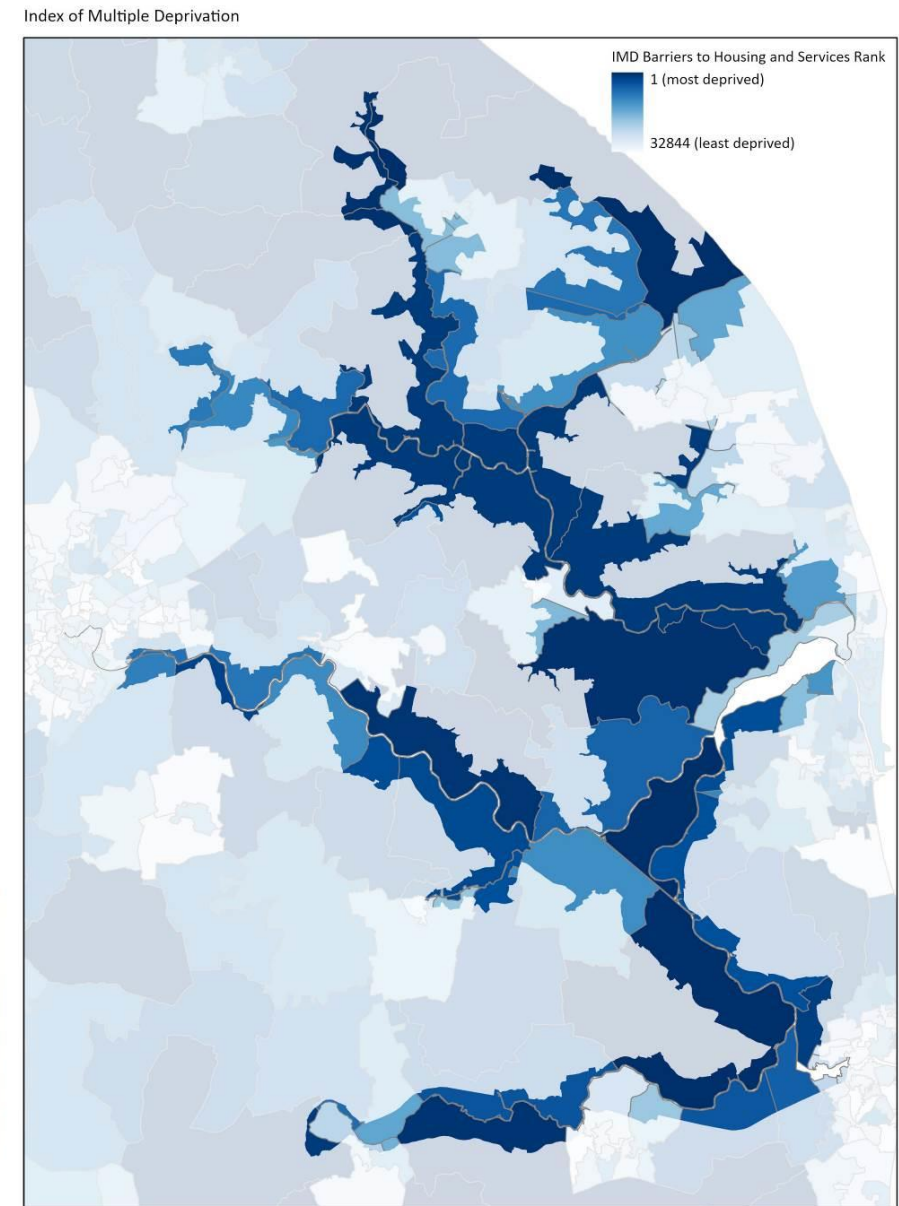
Index of Multiple Deprivation for the Broads constructed by combining the seven transformed domain scores, using the following weights: Income (22.5%) Employment (22.5%) Health and Disability (13.5%) Education, Skills and Training (13.5%) Barriers to Housing and Services (9.3%) Crime (9.3%) Living Environment (9.3%)



Ministry of Housing Communities and Local Government. Contains National Statistics data. Contains public sector information licensed under the Open Government Licence v3.0. © Crown copyright and database rights 2020 OS 100021573.

Map 14

Health Deprivation and Disability Rank for the Broads Authority Executive Area. In the main, the Broads area reflects the rest of the surrounding areas.



Ministry of Housing Communities and Local Government. Contains National Statistics data. Contains public sector information licensed under the Open Government Licence v3.0. © Crown copyright and database rights 2020 OS 100021573.

Map 15

Barriers to housing and services for the Broads
This shows much dark blue, although in Norfolk the Broads is not alone in having barriers to houses and services.

A2.18 Housing

Accommodation type

Tables 16 and 17 show accommodation types as set out in the 2011 Census.

Table 16

Accommodation types

Area	Whole house or bungalow						Flat, maisonette or apartment		Caravan or other mobile / temporary structure	
	Detached		Semi-detached		Terraced					
	Number	%	Number	%	Number	%	Number	%	Number	%
Broads Authority	1,900	53.6	700	19.3	400	11.9	440	12.1	110	3.2
National parks	89,800	44.2	50,430	24.8	39,500	19.4	21,100	10.4	2,420	1.2
England and Wales	5,512,300	22.6	7,506,350	30.7	6,028,300	24.7	5,276,620	21.6	106,010	0.4

A greater number proportion of residents in the Broads live in detached properties compared to other National Parks and nationally, with fewest in terraced properties.

Table 17

Property ownership

Area	Owned outright	Owned with a mortgage or loan	Shared ownership (part owned and part rented)	Social rented: Rented from council (Local Authority)	Social rented: Other	Private rented: Private landlord or letting agency	Private rented: Other	Living rent free
Broads Authority	48.2	23.3	0.4	2.4	3.0	18.0	2.0	2.7
National Park average	45.9	24.5	0.5	4.0	5.9	13.7	2.4	3.0

While the level of owner occupation is roughly similar to that for the English National Parks average, the level of outright ownership (without a mortgage) in the Broads is significantly higher than each of the comparator averages. The level of private renting in the Broads is higher, and the level of social housing (council and housing association, etc.) significantly lower, than the averages for the English National Parks.

Residential development in the Broads

Housing development in the Broads typically comprises primarily replacement dwellings or conversion to dwellings and small infill development. This applies both to permanent residential

properties and holiday accommodation. A small number of new houses are permitted each year. A major constraint on housing development is flood risk and the application of national planning policy in relation to this.

The number of dwellings permitted in the Broads is given below (taken from Broads Authority Annual Monitoring Report):

- 2020/2021 – 7 net new residential dwellings and 0 holiday homes.
- 2019/2020 – 13 net new residential dwellings and 8 holiday dwellings.
- 2018/2019 – 6 net new residential dwellings and 7 holiday dwellings.
- 2017/2018 – 10 net new residential dwellings and 16 holiday dwellings.
- 2016/2017 – 4 net new residential dwellings and 8 holiday dwellings.

Settlements in the Broads are often dominated by the importance of the waterways, with their associated trades and activities. Villages are typically centred around the staithe, with building designs that reflect their special functions, whether connected with riverside trade or management of the land.

Housing costs in the Broads are generally very high, because of the attractiveness of the area. The high cost of housing could impact on the economy of the Broads, as it affects those traditional trades such as agriculture and boat manufacture. Reed and sedge cutters have also indicated the importance of the proximity of living close to the reed and sedge beds. Because of the relative remoteness of parts of the Broads, housing and services in general are in some cases less accessible than elsewhere in the Norfolk and Suffolk counties.

All six Housing Authorities in the Broads area have identified a need for additional local affordable housing, but it will be rarely possible to provide this within the Broads because of the flood risk in most of the area and high land values.

Household composition

Table 18

Household composition

Area	One person household: Aged 65 and over	One person household: Other	One family only: All aged 65 and over	One family only: Married or same-sex civil partnership couple: No children	One family only: Married or same-sex civil partnership couple: Dependent children	One family only: Married or same-sex civil partnership couple: All children non-dependent	One family only: Cohabiting couple: No children	One family only: Cohabiting couple: Dependent children	One family only: Cohabiting couple: All children non-dependent	One family only: Lone parent: Dependent children	One family only: Lone parent: All children non-dependent	Other household types: With dependent children	Other household types: All full-time students	Other household types: All aged 65 and over	Other household types: Other
National Park average	15.5	14.6	12.9	18.3	13.3	5.6	4.8	3.1	0.4	3.7	2.7	1.6	0.0	0.5	3.0
Broads Authority	16.0	16.6	14.3	19.0	9.3	5.3	5.9	3.0	0.6	2.7	2.1	1.3	0.0	0.5	3.4
Broadland	14.1	12.3	12.6	16.8	16.2	6.3	5.5	3.9	0.5	4.9	2.7	1.3	0.0	0.3	2.6
Great Yarmouth	14.8	15.0	10.3	13.4	12.0	5.8	4.9	5.7	0.7	7.7	3.4	2.2	0.0	0.3	3.7
North Norfolk	17.9	13.2	15.2	16.5	11.1	5.0	4.9	3.8	0.5	4.3	2.7	1.4	0.0	0.6	2.8
Norwich	12.7	25.4	6.0	9.7	9.8	3.3	7.7	4.7	0.4	7.3	3.0	1.5	2.4	0.2	5.9
South Norfolk	13.5	12.8	12.5	16.8	16.4	5.7	6.0	4.1	0.5	4.9	2.6	1.3	0.0	0.4	2.5
Waveney	16.3	14.6	12.6	14.4	12.4	5.2	5.0	4.8	0.6	6.2	3.1	1.8	0.0	0.3	2.5

The percentage of 'one family only, with no children' households in the Broads is slightly higher than the National Park average, but much higher than constituent councils. The percentage of 'lone parent with dependent children' households is much lower than constituent councils. Around a hundred residents live in around 10 private residential care homes in the Broads. There are no NHS, local authority, housing association, children's home or psychiatric communal residential establishments in the Broads.

A2.19 Access and transport

Access

The Broads is a living and working environment, and because of its geography there is a high level of inter-dependence with the surrounding areas. Although the population within the area is small, and includes a high proportion of retirees, there are many adjacent villages and communities that are economically dependent on the Broads and are part of its social and cultural network. Conversely, many of those who live within the Broads boundaries rely on facilities and employment in the surrounding villages, towns and city.

Access to facilities and services is critical for the well-being of the local population and the continued enjoyment of the Broads by its many visitors. Improvement and maintenance of safe access for all to facilities, services and recreational facilities have been identified as a key issue.

Access to the Broads is of varied quality, and is difficult, without private transport, to many parts of the area. Due to the geography and network of waterways, much of the Broads area is also relatively difficult to access and the best – and sometimes only – way to reach certain parts of the system is by water. Moreover, links between land and water-based recreational provisions are not as plentiful as they might be. Nevertheless, there are 29km of Bridleways and 291km of footpaths. There are also many community transport schemes based in and around Broads villages. For example, Acle Area Ring and Ride flexi bus serves the villages of Martham, Ormesby, Rollesby, Thurne, Filby, Fleggburgh, Stokesby, Thrigby, Clippesby, Upton, Pilsen Green, South Walsham, Ranworth, Woodbastwick, Salhouse and Wroxham. Another example is Transport Plus which is a unique public transport service provided jointly by Norfolk County Council, East of England Ambulance Service and NHS Norfolk assisting adult members of the public to access essential health, social and wellbeing services. There is also Beccles and Bungay Area Community Transport.

The Broads area is crossed by a number of major transportation links, including the A47 trunk road east of Norwich, the A12 south of Great Yarmouth, and a number of other important roads. Despite this, access to the villages, rivers and Broads is usually off minor roads, as the area is predominantly rural in nature.

Car ownership

Looking at car ownership figures from the 2011 Census, in the 0, 1 and 2 cars or vans categories, the Broads area is similar to other rural districts of Norfolk. The proportion of households with 3 or more cars is greatest in the Broads when compared to the other areas in Table 19.

Table 19

Car ownership (percentages)

Area	No cars or vans in household	1 car or van in household	2 cars or vans in household	3 cars or vans in household	4 or more cars or vans in household
Broads Authority	12.4	40.7	32.3	10.3	4.3
National Park average	11.9	40.8	33.6	9.6	4.1
Broadland	11.4	44.4	33.5	7.8	2.9
Great Yarmouth	27.2	44.8	21.2	5	1.8
South Norfolk	11.7	42.4	34.3	8.4	3.3
North Norfolk	16.2	46.1	28.1	6.9	2.7
Waveney	21.9	46.4	24.3	5.6	1.9
Norwich	33.4	47.6	15.8	2.5	0.7
England	25.8	42.2	24.7	5.5	1.9

Most visitors to the Broads arrive by private car, causing seasonal congestion during the summer travel period, particularly in and around towns acting as a focus for attractions and which provide easy access to the rivers or Broads. The result is increased pressure on the area in terms of demands for visitor attractions, accommodation, road space and parking. This creates a contradictory impression to visitors who expect the Broads to be tranquil and not an area of dense traffic and congestion.

Rail

There are three railway lines that cross the Broads – these serve many of the smaller settlements between Norwich, Great Yarmouth and Lowestoft. The Bittern Line goes north from Norwich via Wroxham, whilst the Wherry Line service runs from Norwich to Great Yarmouth and Lowestoft. Service improvements on the latter resulted in a marked increase in the use of the line. There is also a route from Lowestoft south to Ipswich, with a connection to London Liverpool Street, giving a total journey time of less than three hours.

Air

Norwich International Airport is within a few miles of the western edge of the Broads and offers an increasing number of commercial and low-cost flights. However, air traffic from the airport remains relatively low, and the Broads has as yet not suffered the adverse impacts of air traffic on tranquillity and quiet enjoyment that affect several UK national parks. Stansted Airport is well connected to the area by rail and road.




Travel to work by car

According to the 2001 Census, the Broads has a higher level of travel to work by car, and a lower level of travel on foot than the English National Parks', Norfolk county's and England's averages. The level of cycling to work in the Broads is about the national average, but this is around half the Norfolk average though higher than any of the English National Parks. At the time of writing, 2011 Census Travel to Work data was not available.

Road Traffic Incidents

Maps 20 and 21 show data relating to road traffic collisions in the Broads Authority Area.

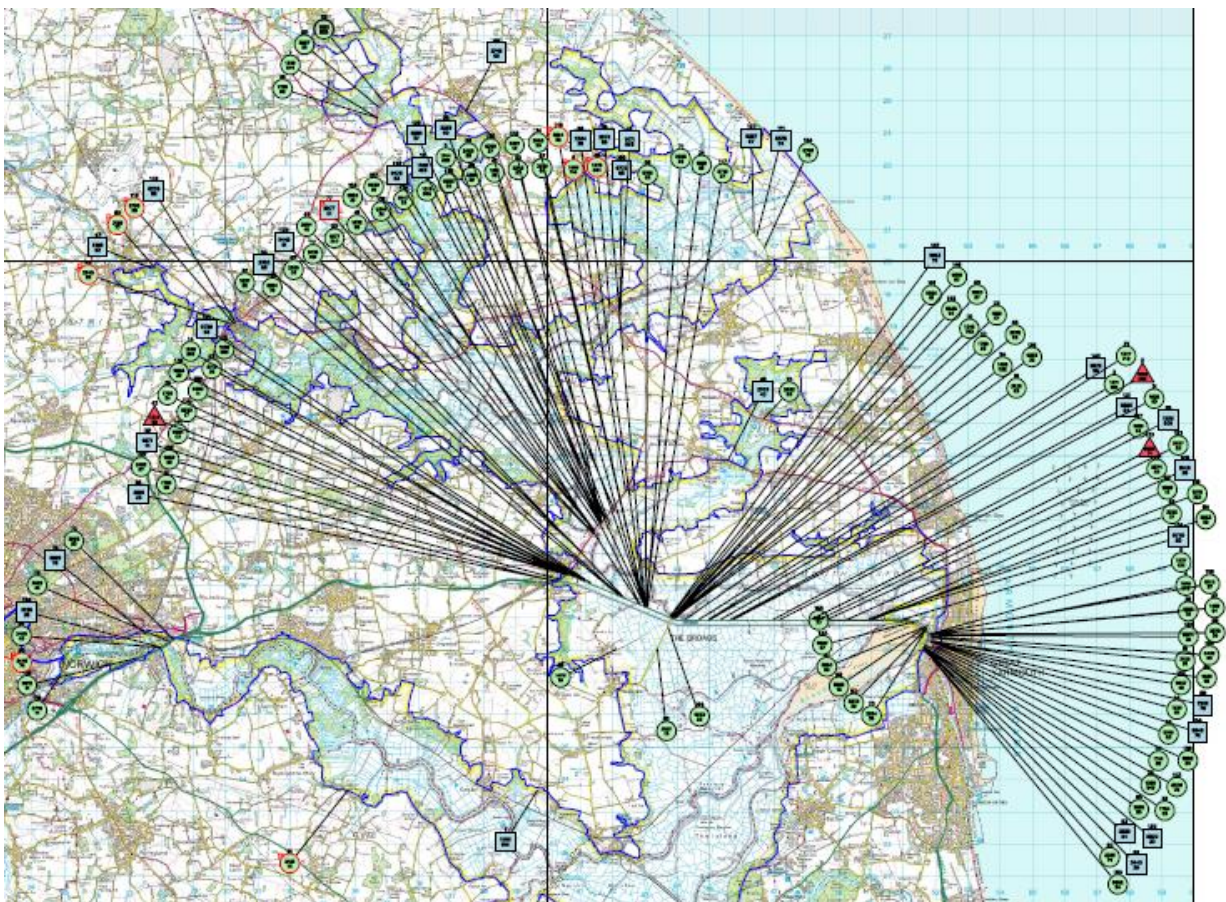
Source: Norfolk County Council. Covering 30/11/2016 to 30/11/2021. Legend: Icons with red outlined shapes and "P" are collisions involving pedestrians. Numbers inside shapes are accident references.

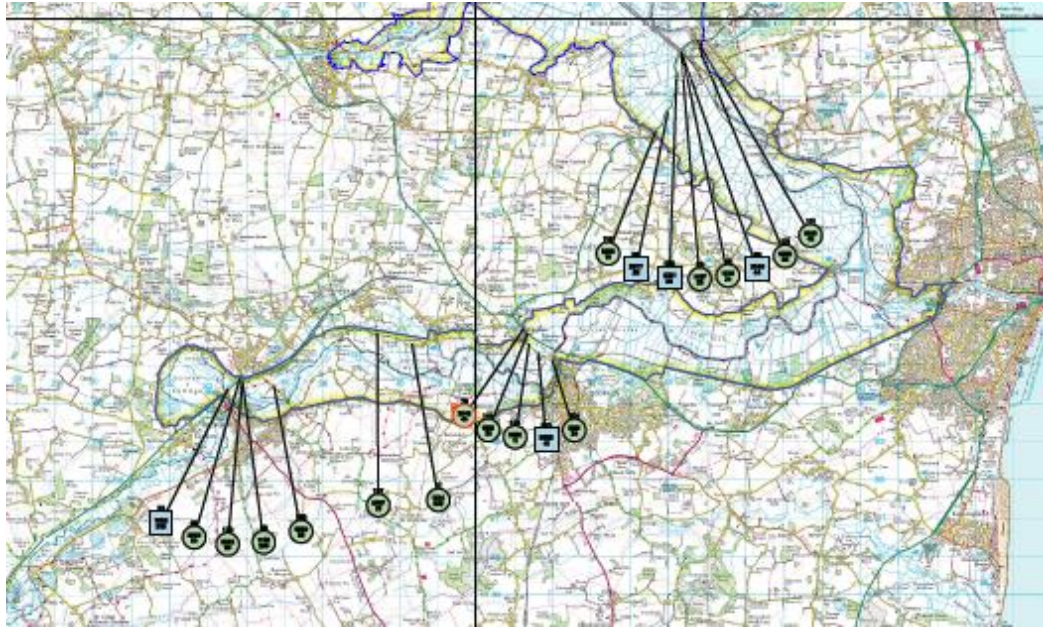
Fatal Collision:  Serious Collision:  Slight Collision: 

Map 20

Traffic incidents in the Norfolk part of the Broads

© Crown copyright
and database rights
2021. Ordnance
Survey 100019340





Map 21

Traffic incidences in Suffolk part of the Broads Authority

Source: Suffolk County Council.

Covering 01/09/2019 to 31/08/2021

TRAFFMAP
AccesMap - Accident Analysis System

SELECTION RESULTS

Run on: 03/12/2021

Accidents between dates 01/09/2016 and 31/08/2021 (60) months

Selection: Notes:

Selected using Manual Selection

Police Ref.	Date	Cas.	Sev.	P2W	Cycs	Ped:	Ch	OAPs:	Vis.	Manv.	Road Cond.	Time	Location
16142741	26/12/2016	1	Slight	0	0	0	0	0	Light	No turn	Dry	1400	CHERRY TREE FARMLOW ROAD
17151970	31/01/2017	1	Serious	1	0	0	0	0	Dark	No turn	Wet/Damp	1715	B & MGEORGE WESTWOOD WAY (A145)
17184221	19/05/2017	3	Slight	0	0	0	1	0	Light	No turn	Dry	1223	BECCLES NEW BRIDGE
17198351	14/06/2017	2	Slight	1	0	0	0	0	Light	No turn	Dry	1240	NORWICH ROAD (A146)
17227059	12/09/2017	1	Slight	0	0	0	0	0	Light	No turn	Dry	1921	BECCLES ROAD A146
17231256	14/10/2017	1	Slight	1	0	0	0	0	Light	No turn	Dry	1118	GEORGE WESTWOOD WAY A145
18268983	02/02/2018	3	Slight	0	0	0	0	1	Dark	No turn	Wet/Damp	1705	NORWICH ROAD A146
18290034	01/05/2018	1	Serious	0	0	0	0	1	Light	No turn	Dry	1700	A146 AT JN WITH GEORGE WESTWOOD WAY
18320993	28/07/2018	2	Slight	0	0	0	0	0	Light	No turn	Dry	1211	A146 NEAR JN WITH A145
18355200	20/12/2018	1	Slight	0	0	0	0	0	Light	No turn	Dry	0807	BECCLES (A146) 100 METRES EAST OF JUNCTION WITH GEORGE WES
19813071	11/01/2019	1	Slight	0	0	0	0	0	Dark	Both	Dry	1653	MORRISON'S CAR PARK
19815036	09/02/2019	1	Slight	0	0	0	0	0	Dark	No turn	Wet/Damp	2000	NORWICH ROAD (A146)
19865429	30/06/2019	1	Serious	1	0	0	0	0	Light	Right	Dry	1635	NORWICH ROAD (A146)
19911399	30/09/2019	3	Slight	0	0	0	0	1	Light	No turn	Dry	0951	A146
19921583	02/11/2019	5	Slight	0	0	0	3	0	Light	No turn	Wet/Damp	1315	NORWICH ROAD (A146)
19923697	10/11/2019	1	Slight	0	0	0	0	0	Light	No turn	Dry	1210	GEORGE WESTWOOD WAY NEAR JUNCTION WITH A146
19926695	26/11/2019	1	Slight	0	0	0	0	1	Light	No turn	Wet/Damp	1030	NORWICH ROAD (A146) - 68 METRES FROM JUNCTION WITH UNCLA
19930537	04/12/2019	2	Serious	0	0	2	0	0	Dark	No turn	Wet/Damp	1958	NORWICH ROAD (A146)
20942645	25/02/2020	2	Slight	0	0	0	0	0	Dark	No turn	Wet/Damp	1635	NORWICH ROAD (A146)
20944675	13/03/2020	1	Slight	0	1	0	0	1	Light	No turn	Dry	1726	WATCH HOUSE HILL (B1062) - 75 METRES FROM JUNCTION WITH V
20947853	24/04/2020	1	Slight	0	1	0	0	1	Light	No turn	Dry	1628	BECCLES ROAD (B1062) - 58 METRES FROM JUNCTION WITH UNCLA
20996649	18/10/2020	1	Slight	0	1	0	0	0	Light	No turn	Wet/Damp	1200	NORTHGATE
211070001	25/06/2021	2	Slight	0	0	0	0	1	Light	Right	Dry	1136	MORRISON'S EXIT AT JUNCTION WITH GEORGE WESTWOOD WAY

Column Totals 38 4 3 2 4 7
No. of Accidents 4 3 1 2 7

Total number of accidents listed: 23

Water

Table 22 shows the length in metres of public moorings managed by the Broads Authority.

Table 22

Public moorings (m) in the Broads. (Source: Broads Authority Asset Management figures)

	2010/11	2011/12	2012/13	2013/14	2014/15	2015/16	2016/17	2017/8	2018/9	2019/202	2020/21
Total Length	7778.6m	7824.6m	7847.6m	7814.5	7568.50	7568.50	7760.30	8456.3	8625.8	8636.8	8741.8

Boat usage

Table 23 shows a breakdown of various types of craft registered to use the Broads.

Table 23

Boat usage

Source: Broads Authority (November 2021)

Annual Boat Numbers as at 1st November

PRIVATE BOATS	2012	2013	2014	2015	2016	2017	2018	2019	2020	2021
Motor Cruisers	4,945	4,967	5,059	5,091	5,086	5,110	5,079	5,083	5,004	5,237
Auxiliary Yachts	1,188	1,166	1,168	1,152	1,127	1,132	1,093	1,107	965	1,048
Day Launches	542	521	514	504	495	556	574	558	562	582
Outboard Dinghies	1,058	1,043	1,062	1,016	962	1,064	1,060	1,058	1,051	1,140
Workboats	179	188	180	172	156	158	156	153	144	142
Passenger Vessels SPB	<i>Small Passenger Boats (Charitable Trusts & Ferries)</i>									
	22	21	23	13	19					
TOTAL MOTOR BOATS:	7,912	7,885	7,983	7,935	7,826	8,042	7,983	7,982	7,739	8,168
Sailing Craft	1,262	1,214	1,230	1,191	1,107	1,076	1,081	1,023	844	920
Rowing Craft	1,701	1,636	1,578	1,532	1,513	1,483	1,513	1,545	1,800	2,039
Houseboats	23	33	27	33	45	45	49	52	49	52
Total	10,898	10,768	10,818	10,691	10,491	10,646	10,626	10,602	10,432	11,179
HIRE BOATS	2012	2013	2014	2015	2016	2017	2018	2019	2020	2021
Motor Cruisers	804	869	842	821	789	802	806	801	734	729
Auxiliary Yachts	46	46	47	43	44	45	46	44	39	45
ALL CABIN HIRE BOATS:	940	915	889	864	833	847	852	845	773	774
Day Launches	294	289	299	290	295	290	301	297	261	326
Outboard Dinghies	4	7	8	10	11	9	9	8	4	4
Passenger Vessels MCA	13	11	10	10	6	6	6	6	5	6
Passenger Vessels SPB	<i>Small Passenger Boats (Commercial)</i>									
	6	7	7	4	8					
TOTAL MOTOR BOATS:	1,251	1,222	1,206	1,174	1,145	1,158	1,175	1,163	1,047	1,118
Sailing Craft	110	109	110	108	102	101	95	87	74	88
Rowing Craft	184	188	175	184	192	191	194	193	182	227
Houseboats	16	16	16	16	16	28	26	26	27	27
Total	1,561	1,535	1,507	1,482	1,455	1,478	1,490	1,469	1,330	1,460
Grand Total	12,459	12,303	12,325	12,173	11,946	12,124	12,116	12,071	11,762	12,639

The numbers of boats on the Broads has reduced gradually, although 2021 shows a upwards move.

A2.20 Health

Those who completed the 2011 Census were asked to rate their health, as shown in Table 24.

Table 24

Health rating of population (Source: 2011 Census)

Area	Very good health	Good health	Fair health	Bad health	Very bad health
Broadland	44.3	37	14	3.6	1.1
Gt Yarmouth	40.3	36	16.6	5.5	1.6
North Norfolk	38.9	37.8	17.2	4.8	1.4
Norwich	44.9	35.4	14.1	4.4	1.2
South Norfolk	46.4	35.8	13.4	3.5	1
Waveney	41.1	36.3	16.1	5.1	1.5
Broads Authority	39.9	38.1	16.0	4.8	1.3

A2.21 Crime

Statistics from Norfolk Police (March 2021) are as follows:

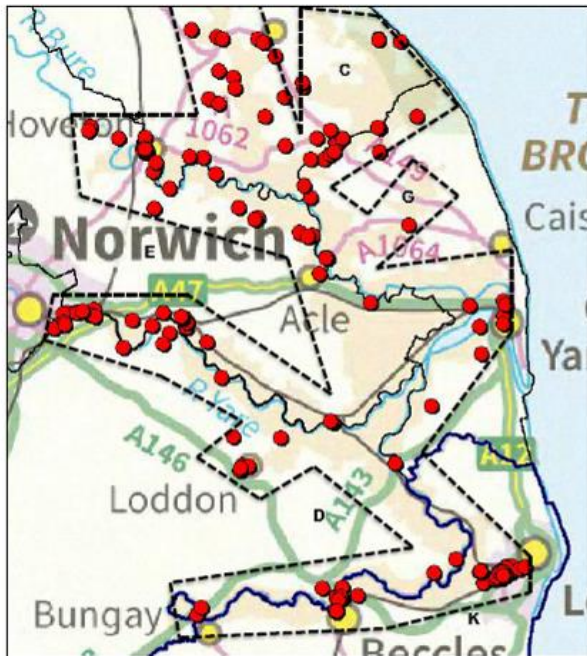
- Between 1st January 2018 to 31st December 2020 a total of 247 crimes were reported across the Broads in Norfolk and Suffolk. The yearly figures have remained relatively constant with a mean average of 82 crimes per year.
- The peak times for crime to be committed is during the summer months. This coincides with the high season on the Broads when the public visit the area for a holiday.
- Theft accounts for 47 of total crime committed in the past 3 years. This includes the theft of various types of property such as boats, outboard engines, navigational equipment and fuel.
- Crime has been reported from locations across the whole of the Broads; however, there are repeat locations. These include Oulton Broad, Wroxham, Potter Heigham, Trowse, Brundall and Beccles.
- Of the five districts that cover the Broads, East Suffolk has reported the highest number of crimes in the last 3 years (73). This is reflected by the hot spot seen at Oulton Broad. In Norfolk, Broadland district has reported the most crime (69).
- In addition to the crimes reported on the Broads, there were 23 marine crimes along the River Wensum in Norwich City Centre. A third of these are located around the Yacht Station on Riverside Road. A quarter of the crime reported in Norwich is theft. The property reported stolen include kayak, boats and canoes.

Map 25

Crime on the Broads in Norfolk and Suffolk



Crime on the Broad in Norfolk and Suffolk



Map 1: location of crimes reported in the area of the Broads. The Broads have been outlined using a dashed line.

KEY

- Crime
 - Point
- Suffolk/Norfolk boarder
 - ▭ Region
- District boundary
 - ▭ Region
- Approximate outline of the Broads

Districts

- C North Norfolk district
- D South Norfolk district
- E Broadland district
- G Great Yarmouth district
- K East Suffolk district

STRATEGIC, BUSINESS & OPERATIONAL SERVICES

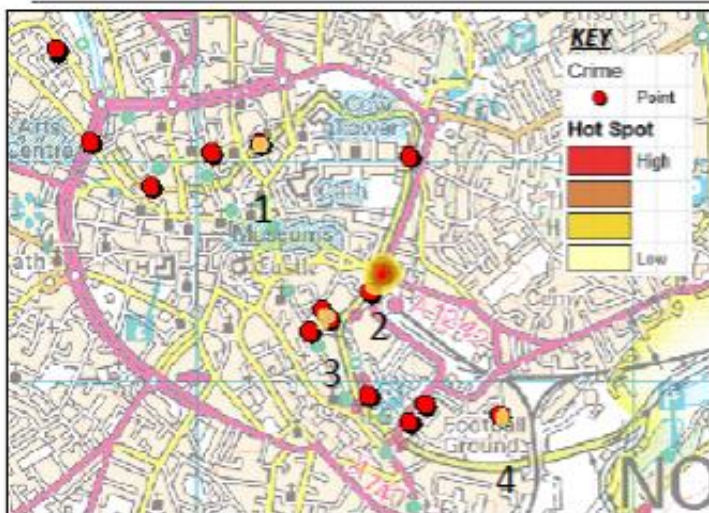
OFFICIAL

5

Map 26

Crime in Norwich

Crime in Norwich



Map 3: location of crimes reported on or along the banks of the River Wensum in Norwich only. The hotspots highlight repeat locations.

A2.22 Qualifications

Table 27

Qualifications (Source: 2011 Census)

Area	None	Level 1 highest	Level 2 highest	Apprenticeship highest	Level 3 highest	Level 4 highest	Other highest	School children and full-time students age 16 to 17	School children and full-time students 18 and over	Full-time students 18 to 74: economically active in employment	Full-time students 18 to 74: economically active unemployed	Full-time students 18 to 74: economically inactive
Broads Authority	23.8	12.3	15.6	5.3	11.1	27.9	4.0	1.8	1.7	0.8	0.1	0.8
National Park average	19.8	11.8	15.6	3.9	11.2	33.6	4.0	2.4	2.0	0.8	0.1	1.1
Broadland	22.9	14.8	17.5	5.5	12.0	23.2	4.3	2.6	2.1	1.1	0.1	0.8
Great Yarmouth	32.8	15.7	16.1	4.7	10.6	14.2	5.9	2.6	2.5	1.0	0.3	1.2
North Norfolk	27.5	14.1	16.2	4.7	10.5	22.3	4.7	2.2	1.5	0.7	0.1	0.7
Norwich	22.6	12.8	13.8	2.6	15.2	27.7	5.2	1.9	11.6	3.3	1.0	7.3
South Norfolk	22.6	13.6	17.1	4.2	11.5	27.0	4.0	2.7	2.1	1.0	0.1	1.0
Waveney	29.8	14.2	16.2	5.4	11.7	17.9	4.7	2.6	2.1	0.9	0.3	0.9

The Broads has a greater proportion of people with no qualifications than the National Park average.

A.23 Ethnic group

Table 28

Ethnic Group (Source: 2011 Census)

Area	White: English/Welsh/Scottish/ Northern Irish/British	White: Irish	White: Gypsy or Irish Traveller	White: Other White	Mixed/multiple ethnic group: White and Black Caribbean	Mixed/multiple ethnic group: White and Black African	Mixed/multiple ethnic group: White and Asian	Mixed/multiple ethnic group: Other Mixed	Asian/Asian British: Indian	Asian/Asian British: Pakistani	Asian/Asian British: Bangladeshi	Asian/Asian British: Chinese	Asian/Asian British: Other Asian	Black/African/Caribbean/Black British: African	Black/African/Caribbean/Black British: Caribbean	Black/African/Caribbean/Black British: Other Black	Other ethnic group: Arab	Other ethnic group: Any other ethnic group
Broads Authority	96.4	0.6	0.0	1.6	0.2	0.1	0.2	0.2	0.1	0.0	0.0	0.0	0.3	0.1	0.1	0.0	0.0	0.0
National Parks average	95.9	0.4	0.1	1.9	0.2	0.1	0.3	0.2	0.1	0	0	0.2	0.4	0.1	0	0	0	0.1

Appendix 3: Literature review

This literature review was produced for the review of the Local Plan for the Broads. For the purposes of this Sustainability Appraisal Report, it also relates to the review of the Broads Plan where relevant.

A3.1. International

[Ramsar Convention on Wetlands of International Importance, Especially Waterfowl Habitat](#) (1971) (amended 1982)

The Ramsar Convention on Wetlands of International Importance Especially as Waterfowl Habitat (also known as the Convention on Wetlands) is an international treaty for the conservation and sustainable use of wetlands. It is named after the city of Ramsar in Iran, where the convention was signed in 1971.

[Kyoto Protocol](#) (1997)

The Kyoto Protocol is an international treaty. It extends the 1992 United Nations Framework Convention on Climate Change that commits state parties to reduce greenhouse gas emissions, based on the scientific consensus that global warming is occurring and that human-made CO₂ emissions are driving it.

[Rio Earth Summit 1992](#)

Through this summit the United Nations sought to help national governments to rethink economic development and find ways to stop polluting the planet and depleting its natural resources.

[Johannesburg Declaration on Health and Sustainable Development](#) (2002)

The Johannesburg Declaration builds on earlier declarations made at the United Nations Conference on the Human Environment at Stockholm in 1972, and the Earth Summit in Rio de Janeiro in 1992. While committing the nations of the world to sustainable development, it also includes substantial mention of multilateralism as the path forward.

[UN Convention on Human Rights](#)

The Universal Declaration of Human Rights (UDHR) is an international document adopted by the United Nations General Assembly. It enshrines the rights and freedoms of all human beings.

[Paris Agreement](#) (2016)

The Paris Agreement is a legally binding international treaty on climate change. Its goal is to limit global warming to well below 2, preferably to 1.5 degrees Celsius, compared to pre-industrial levels. To achieve this long-term temperature goal, countries aim to reach global peaking of greenhouse gas emissions as soon as possible to achieve a climate neutral world by mid-century. Climate change will be a key topic in the Local Plan and the Broads Plan.

A3.2. European

While the UK has left the EU, there are still some documents of relevance as they have been transposed into UK law, as listed below. Over the period of producing the Local Plan and the Broads Plan, some of these documents may no longer be relevant, and these plans will meet all necessary requirements as they are produced.

[European Climate Change Programme](#)

The European Commission established the European Climate Change Programme (ECCP) in 2000 to help identify the most environmentally and cost-effective policies and measures that can be taken at European level to cut greenhouse gas emissions.

[Air Quality Framework Directives](#)

European Union policy on air quality aims to develop and implement appropriate instruments to improve air quality. The main instruments are a series of Directives setting ambient air quality standards to provide protection from excessive pollution concentrations, based on the latest research on the health effects of air pollution.

[Directive 2002/49/EC on the Assessment and Management of Environmental Noise](#)

This Directive aims to “define a common approach intended to avoid, prevent or reduce on a prioritised basis the harmful effects, including annoyance, due to the exposure to environmental noise.”

[Birds Directive 1979 79/409/EEC](#)

Habitat loss and degradation are the most serious threats to the conservation of wild birds. The Directive therefore places great emphasis on the protection of habitats for endangered and migratory species. It establishes a network of Special Protection Areas (SPAs) including all the most suitable territories for these species. Since 1994, all SPAs are included in the Natura 2000 ecological network, set up under the Habitats Directive 92/43/EEC. Protecting and enhancing wildlife is key to the Local Plan and the Broads Plan, and impacts will be assessed through Habitats Regulations Assessment.

[Conservation of Natural Habitats and of Wild Flora and Fauna Directive \(92/43/EC\)](#)

The Habitats Directive ensures the conservation of a wide range of rare, threatened or endemic animal and plant species. Some 200 rare and characteristic habitat types are also targeted for conservation in their own right. It forms the cornerstone of Europe's nature conservation policy with the Birds Directive and establishes the EU wide Natura 2000 ecological network of protected areas, safeguarded against potentially damaging developments. Protecting and enhancing wildlife is key to the Local Plan and the Broads Plan, and impacts will be assessed through Habitats Regulations Assessment.

[Water Framework Directive 2000 2000/60/EC](#)

Citizens, environmental organisations, nature, water-using sectors in the economy all need cleaner rivers and lakes, groundwater and bathing waters. Water protection is therefore one of the priorities of the Commission. European Water Policy should get polluted waters clean again, and ensure clean waters are kept clean. Water management will be a key consideration in the Local Plan and the Broads Plan.

[European Strategic Environmental Assessment Directive \(2001/42/EC\)](#)

The Protocol on Strategic Environmental Assessment augments the Espoo Convention by ensuring that individual Parties integrate environmental assessment into their plans and programmes at the earliest stages, and thus help in laying down the groundwork for sustainable development. This Directive is met through Sustainability Appraisals.

[European Renewable Energy Directive \(2018/2001/EU\)](#)

In December 2018, the recast Renewable Energy Directive 2018/2001/EU entered into force, as part of the Clean Energy for all Europeans package, aimed at keeping the EU a global leader in renewables and, more broadly, helping the EU to meet its emissions reduction commitments under the Paris Agreement.

[Transforming our World: the 2030 Agenda for Sustainable Development \(2015\)](#)

This agenda, including its 17 Sustainable Development Goals (SDGs) and 169 targets, was adopted on 25 September 2015 by Heads of State and Government at a special UN summit. The Agenda is a commitment to eradicate poverty and achieve sustainable development by 2030 world-wide, ensuring that no one is left behind. The adoption of the 2030 Agenda was a landmark achievement, providing for a shared global vision towards sustainable development for all.

A3.3. National

[National Planning Policy Framework \(NPPF\) \(2019\)](#)

The NPPF sets out Government planning policy and will influence Local Plans. The Local Plan for the Broads will reflect the most up-to-date national policy.

[National Planning Policy Guidance \(NPPG\)](#)

The NPPG sets out guidance to Government planning policy and will influence Local Plans. From time to time, aspects are updated, and the Local Plan for the Broads will reflect the most up-to-date national policy.

[Dark Skies APPG Policy Plan \(2021\)](#)

The All-Party Parliamentary Group has produced policy areas where there could be improvements relating to dark skies.

[National design code \(consultation version, February 2021\)](#)

The National Model Design Code provides detailed guidance on the production of design codes, guides and policies to promote successful design. It expands on the ten characteristics of good design set out in the National Design Guide, which reflects the government's priorities and provides a common overarching framework for design.

[Indices of Multiple Deprivation \(IMD\) \(2019\)](#)

The Indices of Multiple Deprivation are updated every five years or so. A Local Plan topic paper will be produced on how the Broads rates against the IMD.

[English National Parks and the Broads UK Government Vision and Circular \(2010\)](#)

The purpose of this circular is to provide updated policy guidance on the English National Parks and the Broads ('the Parks').

[Planning for the Future, White Paper \(2020\)](#)

This White Paper proposes many changes to the planning system, and any changes will be reflected in the Local Plan.

[Fixing our broken housing market \(2017\)](#)

This housing white paper sets out the Government's plans to reform the housing market and boost the

supply of new homes in England. While the scale of growth in the Broads is quite small, the economic section of the Local Plan will reflect this strategy as appropriate.

[Building our Industrial Strategy](#) (2017)

This document identifies 10 pillars we believe are important to drive forward our industrial strategy across the entire economy: science, research and innovation; skills; infrastructure; business growth and investment; procurement; trade and investment; affordable energy; sectoral policies; driving growth across the whole country; and creating the right institutions to bring together sectors and places. These pillars frame our approach, and across each of them we set out a programme of new policy. While the scale of growth in the Broads is quite small, the economic section of the Local Plan will reflect this strategy as appropriate.

[National Planning Policy for Waste](#) (2014)

This document sets out the Government's detailed waste planning policies. It may be more relevant to Minerals and Waste Planning Authorities than to the Broads Authority, but this will be checked when producing the Local Plan. The Authority will also work closely with the county councils regarding minerals and waste.

[Air quality plan for nitrogen dioxide \(NO₂\) in UK](#) (2017)

This plan sets out the UK's plan for reducing roadside nitrogen dioxide concentrations. This may be of relevance to the transport and health policies of the Local Plan, as well as the Habitats Regulations Assessment.

[UK Marine Policy Statement](#) (2011)

The Marine Policy Statement is the framework for preparing Marine Plans and taking decisions affecting the marine environment. The East inshore and offshore plans relate to the Statement.

[Planning policy for traveller sites](#) CLG (2012 and 2015)

This Government planning policy for traveller sites should be read in conjunction with the National Planning Policy Framework.

Various consultations on planning reforms

There could be changes to the planning system over the coming years, and the Local Plan will need to reflect and be in conformity with those changes.

[Landscapes Review: National Parks and AONBs](#) (2019)

The Landscapes Review contains proposals for the future management of National Parks and Areas of Outstanding Natural Beauty (AONBs) in England. Any proposals taken forward by the Government could have implications for the Local Plan and the Broads Plan.

[Environment Bill](#) (ongoing)

The Environment Bill will make provision about targets, plans and policies for improving the natural environment; for statements and reports about environmental protection; for the Office for Environmental Protection; about waste and resource efficiency; about air quality; for the recall of products that fail to meet environmental standards; about water; about nature and biodiversity; for conservation covenants; about the

regulation of chemicals; and for connected purposes. These aspects could influence the Local Plan and Broads Plan.

A3.4. East Anglia

[A47 Business Case](#) (2017)

The Acle Straight passes through the Broads and is part of the A47. We are aware of the desire of some people to dual this part of the A47. The Local Plan already has a policy relating to this, and it is likely that this policy will be rolled forward into the new Local Plan.

[East Anglia Rail Prospectus](#) (2015)

Rail lines and rail stations run throughout the Broads. There is a policy in the Local Plan that relates to rail stations and halts, and this is likely to be rolled forward into the new Local Plan.

[Norfolk and Suffolk Gypsy and Traveller Strategy](#) (2012)

The actual need for Gypsy, Travellers and Travelling Show People was calculated as part of a 'needs assessment', completed jointly with other Local Planning Authorities. This concluded a need of zero in the Broads, but we included a development management policy relating to such sites, which is likely to be rolled forward in the new Local Plan.

[East Inshore and East Offshore Marine Plans / MMO](#) (2014)

These Marine Plans are already reflected in the Local Plan. The MMO is a key stakeholder and will be consulted at various stages of plan production.

[Anglian Water: Water Resources Management Plan](#) (2019)

Anglian Water supplies water to parts of the Broads and is responsible for waste water for the whole of the Broads Authority Executive Area. Their plans will be of relevance to the Local Plan and the Broads Plan.

[Essex & Suffolk Water WRMP](#) (2019)

Essex & Suffolk Water supplies water to parts of the Broads. They also extract water from the Broads. Their plans will be of relevance to the Local Plan and the Broads Plan.

[Shoreline Management Plans](#)

There is a small section of coastline in the Broads executive area. There is a policy that seeks to protect the general openness and low-key development on the coast in the current Local Plan, and this policy stance is likely to be rolled forward in the new Local Plan. The SMPs are also relevant to the Broads Plan review.

[Broadland Catchment Plan](#) (2018) and [Anglian River Basin District River Basin Management Plan](#) (2018)

What happens upstream of the Broads can have significant impacts on the Broads. These reports will inform the Local Plan and the Broads Plan.

[Water Resource East Updated Resource Position Statement](#) (February 2021)

Water Resources East (WRE) is one of five Regional Planning Groups working under the National Framework for Water Resources to develop a long-term integrated water management plan for Eastern England. WRE's vision is for Eastern England to have sufficient water resources to support a flourishing economy, a thriving environment and the needs of its population, and for the region to be seen as an international exemplar for

collaborative integrated water resource management. Water resource management will be an important theme for the Local Plan and the Broads Plan.

[Norfolk and Suffolk Natural Capital Assets Evidence Compendium | Norfolk Biodiversity Information Service \(nbis.org.uk\)](#) (2020)

The counties of Norfolk and Suffolk have stewardship of a wealth of natural assets. The purpose of this Evidence Compendium is to present information about these assets and the potential risks to them, to provide an element of the preparatory work that will feed into a Norfolk & Suffolk 25 Year Environment Plan. Where possible, data is provided by county and also for five important natural areas within them: the Norfolk Coast Area of Outstanding Natural Beauty (AONB) and Suffolk Coasts & Heaths AONB, plus The Broads, The Brecks and the Dedham Vale AONB.

A3.5. New Anglia LEP

[Local Industrial Strategy](#) (2020)

This Local Industrial Strategy is based on strong evidence and sets out the actions local partners are taking and how they are working with government to continue to make this one of the best places in the world to live, work, learn and succeed in business. While the scale of growth in the Broads is quite small, we will ensure that the economic section of the Local Plan reflects this strategy as appropriate.

[Economic Strategy and Investment Plan](#) (2017)

The Economic Strategy for Norfolk and Suffolk is a shared endeavour between businesses, education providers, local councils, the voluntary and community sector and is led by New Anglia LEP. It outlines ambitious plans for future growth across Norfolk and Suffolk. While the scale of growth in the Broads is quite small, we will ensure that the economic section of the Local Plan reflects this strategy as appropriate.

[Covid-19 Economic Recovery Plan](#) (ongoing)

The Norfolk and Suffolk Covid-19 Economic Recovery Restart Plan brings together commitments and actions from local authority, private sector, third sector and education organisations to outline the key activities in place to help our region's economy restart after the COVID-19 pandemic. The Norfolk and Suffolk Visitor Economy Recovery Plan, from New Anglia LEP and Visit East of England, outlines commitments and actions to support our tourism and cultural sectors.

[Local Energy East Strategy](#) (2018)

The three LEP areas of Cambridgeshire and Peterborough (formerly Greater Cambridge and Greater Peterborough), Hertfordshire and New Anglia have joined together to create a tri-LEP area project. The project also involves their constituent local authorities, the Distribution Network Operator (DNO), universities, third sector and energy sector businesses. This strategy sets out the collective ambitions to 2030. These are underpinned by a range of activities that the LEE Network and the Greater South East Energy Hub will take forward to ensure that we remain at the forefront of Clean Growth in the UK and grasp the opportunities ahead. This will be relevant to the energy section of the Local Plan.

[Rail Prospectus](#) (2015)

There are rail lines and rail stations that run throughout the Broads. There is a policy already in the Local Plan that relates to rail stations and halts and this is likely to be rolled forward into the new Local Plan.

A3.6. Norfolk

[Central Norfolk SHMA \(2017\)](#)

This SHMA calculated the housing need for the Broads. While it is a few years old, it still contains relevant information. The BA will shortly start work on calculating the housing need for the new Local Plan.

[Norfolk Minerals and Waste Core Strategy and Site Allocations documents.](#)

There may be some sites that the new Local Plan allocates near or on sites that have been identified as sources of minerals. Working with the planners at Norfolk County Council, we will seek to safeguard/seek the use of such materials as relevant.

[Norfolk Rural Development Strategy \(2017\)](#)

This strategy is relevant to the Local Plan and Broads Plan, as much of the Broads is rural.

[Norfolk's Earth Heritage - valuing our geodiversity \(2010\)](#)

Geodiversity is addressed through the natural environment policy of the Local Plan, which is likely to be rolled forward to the new Local Plan.

Norfolk Strategic Planning Framework, Version 3 (2021)

This framework includes agreements that Local Plans need to address as they are produced. This is also important in addressing the Duty to Cooperate requirements. At the time of writing, the document is in the process of being endorsed by the Norfolk Local Planning Authorities.

[Norfolk County Council Environment Policy \(2019\)](#)

This policy reflects the areas that the Council sees as key to protecting and maintaining the health of Norfolk's distinctive environment and its occupants. The Policy signposts to overarching activity spanning a range of environmental interactions the Council is involved with, including those where it already has its own statutory environmental responsibilities. Generally, the policy aligns with the general aims of the Local Plan.

[Norfolk Local Transport Plan \(being updated\)](#)

This plan sets out the approach to transport over the coming years. As well as liaising with the County Council Highways team, this document will be of relevance to the Local Plan.

[Norfolk Strategic Infrastructure Plan \(2020\)](#)

The Strategic Infrastructure Delivery Plan (SIDP) sets out Norfolk's high-level infrastructure priorities for the next 10 years (see [project map](#)). Some projects are near to the Broads. The Acle Straight passes through the Broads and is part of the A47. We are aware of the desire of some to dual this part of the A47. The current Local Plan already has a policy relating to the dualling and it is likely that this policy will be rolled forward into the new Local Plan.

[Norfolk Rail Prospectus \(being updated\)](#)

There are rail lines and rail stations that run through the Broads. There is a policy already in the Local Plan that relates to rail stations and halts and this is likely to be rolled forward into the new Local Plan.

[Wroxham and Hoveton Network Improvement Strategy \(2020\)](#)

This strategy could influence the Hoveton and Wroxham sections of the Local Plan.

[Public Health Strategy](#) (2016) and [Joint Health and Wellbeing Strategy](#) (2018)

These strategies look at health issues across Norfolk and review Public Health priorities and vision for the next four years. The link between health and planning is clear and we will ensure health continues to be addressed in the new Local Plan.

[Norfolk Access Improvement Plan](#) (2019)

This looks into land and water-based ways to enjoy the area, with benefits to the economy and health and wellbeing. The Local Plan will look to protect existing routes and safeguard future routes, and the Broads Plan includes an objective for improving integrated access.

[Digital Inclusion Strategy](#) (2018)

The strategy's aim is that: "Every Norfolk resident has ability to take full advantage of the opportunities and benefits of accessing online services and harnessing internet technology." Generally, this aim is supported in the current Local Plan and the relevant policies are likely to be rolled forward into the new Local Plan. Care needs to be taken to balance the importance of providing telecommunications and the impact on protected landscapes.

[Local Flood Risk Management Strategy](#) (most recent parts adopted 2020)

Flood risk from all sources of flooding and the impact of climate change are fundamental issues the Local Plan will need to address. The Pitt Review produced 91 recommendations for the Government to act upon. At the heart of these recommendations are: Knowing where and when it will flood, reducing the risk and impact of flooding, better advice and help for people to protect their families and homes, maintaining power and water supplies and protecting essential services, rescuing and caring for people during an emergency, staying healthy and speeding up recovery. To fulfil these recommendations locally, Norfolk County Council as Lead Local Flood Authority is required to develop, maintain, apply and monitor a Local Flood Risk Management Strategy.

[Surface Water Management Plans](#)

As Lead Local Flood Authority, Norfolk County Council is responsible for looking at the causes of surface water flooding and its consequences, in order to learn lessons and help predict potential future flooding and minimise its effects. They do this through our Surface Water Management Plans (SWMP) which use historical flood records and detailed models of potential future floods. If there are any SWMP for areas that are allocated for development in the Local Plan, we will liaise with the LLFA.

Emerging documents

The Norfolk Green Infrastructure and Recreation Impact Avoidance and Mitigation Strategy and the Norfolk Older Persons Accommodation report were in preparation at the time of preparing this report. Their findings will inform the new Local Plan and Broads Plan.

A3.7. Suffolk

[Suffolk Minerals and Waste Local Plan](#) (2020)

There may be some sites that the new Local Plan allocates near or on sites that have been identified as sources of minerals. Working with the planners at Suffolk County Council, we will seek to safeguard/seek the use of such materials as relevant.

[Suffolk Green Access Strategy](#) (2020)

This strategy looks into land and water-based ways to enjoy the area, with benefits to the economy and health and wellbeing. The Local Plan will look to protect existing routes and safeguard future routes.

[Suffolk Transport Plan](#) (2011)

This plan sets out the approach to transport over the coming years. As well as liaising with the County Council Highways team, this document will be of relevance to the Local Plan and the Broads Plan.

[Suffolk Growth Strategy](#)

This strategy provides the broad framework showing how the county, district and borough councils, working together, intend to do “whatever they can” to enable business to be successful. This will be relevant to the economic section of the Local Plan.

[Suffolk Design](#)

Suffolk Design is an initiative to ensure the quality of new buildings, public spaces and neighbourhoods throughout the county meets today’s needs and tomorrow’s challenges. This will be relevant to the design section of the Local Plan.

[Suffolk’s Nature Strategy](#) (2015) and [Suffolk Biodiversity Action Plan](#) (2012)

These documents outline priorities and how the landscapes and wildlife in Suffolk contribute to economic growth and health and wellbeing. This will be relevant to the natural environment aspects of the Local Plan and the Broads Plan.

[Suffolk Flood Risk Management Strategy](#) (2016) and [Preliminary Flood Risk Assessment](#)

Flood risk from all sources of flooding and the impact of climate change are a fundamental issue that the Local Plan will need to address. This is an important tool to help everyone understand and manage flood risk within Suffolk. The strategy summarises the information available on the risk of flooding in Suffolk and way to manage that risk. The strategy document has been published by the Suffolk Flood Risk Management Partnership, which is made up of all the relevant Risk Management Authorities (RMAs) relevant to flood risk in Suffolk. The Preliminary Flood Risk Assessment is an assessment of floods that have taken place in the past, floods that could take place in the future. It considers flooding from surface water runoff, groundwater and ordinary watercourses.

[A policy to address poverty in Suffolk](#) (2015)

The aim of this policy is to ensure that we build on work that is already in place to address poverty, so that it is embedded in the planning and delivery of all services, in particular for our most vulnerable groups.

[Suffolk Local Geodiversity Action Plan](#) (2006)

Geodiversity is addressed through the natural environment policy of the Local Plan, and is likely to be rolled forward to the new Local Plan.

[Health and Wellbeing Strategy](#) (2019)

The link between health and planning is clear, and we will ensure health continues to be addressed in the new Local Plan and through objectives in the Broads Plan.

A3.8. Local

[North Norfolk AONB Management Plan](#) (2014) and [\(more recent version under preparation\)](#)

Part of the AONB is in the Broads and therefore this management plan is an important consideration.

Neighbouring Local Planning Authority Local Plans, Core Strategies, Development Management and Site Allocations documents

More Local Plans will be adopted while the Local Plan for the Broads is being prepared. These documents will not directly be relevant to the Broads, as the Broads Authority is the Local Planning Authority and produces its own documents, but it will be important to understand local policy approaches, particularly for settlements that are partly in the Broads and partly in the neighbouring Local Planning authority's area.

Constituent county/district/borough council economic strategies, environment strategies, housing strategies and business plans

While the Broads Authority is the Local Planning Authority for the Broads, the Broads sits within six district council and two county council areas that provide services to residents, and the various strategies produced by these councils will therefore be of relevance and could inform the Local Plan for the Broads.

District and County Sustainable Community Strategies

While these strategies are past their published end date, they are still in place as far as we are aware. A note produced to support the 2019 Local Plan will be updated when policies of the new Local Plan are formulated.

[Solar PV and Building Regulations in Conservation areas](#) – covering Suffolk

This was produced to cover all of Suffolk. As we produce the Local Plan, we will review the potential and need to incorporate this into the Local Plan.

[Strategic Flood Risk Assessment](#) (2017, 2018 and 2019) and [Broadland Futures Initiative](#) (ongoing)

This sets out detailed flood risk zones. Working with other Local Planning Authorities and the Environment Agency, we will assess the need to review these documents. But flood risk from all sources of flooding and the impact of climate change are a fundamental issue that the Local Plan and the Broads will address. The Broadland Futures Initiative work will be relevant to these plans.

[River Wensum Strategy](#)

The River Wensum Strategy's vision is: "To breathe new life into the river by enhancing it for the benefit of all and increasing access to, and greater use of, this important asset. An enhanced river corridor, with its unique natural and historic environment, will once again play an important part in the growth and vitality of the city, strengthening the visitor economy and helping to give the city a competitive advantage in attracting inward investment."

[Suffolk Coast RAMS strategy](#)

The RAMS project allows for a strategic approach to mitigating the in-combination effects of development on these designated areas and allows mitigation to be delivered across the project area.

A3.9. Broads-specific

[Broads Integrated Access Strategy](#) (2019)

This strategy looks into land and water-based ways to enjoy the Broads, with benefits to the economy and health and wellbeing. The Local Plan will look to protect existing routes and safeguard future routes. The

Authority's Waterways and Recreation Officer will advise on relevant aspects of the Local Plan and Broads Plan.

[Broads Flood Risk SPD](#) (2020)

Flood risk is a key constraint in the Broads. This elaborates on adopted policy. It does provide more detail than might be relevant for a Local Plan, but the potential to incorporate elements of the SPD into the Local Plan will be reviewed. The SPD may need updating over the coming years, certainly when a new Local Plan is adopted.

[Landscape Character Assessment](#) (2016) and [Landscape Sensitivity Study](#) (2012)

Impact of development on landscape character is a key consideration for the Local Plan. These documents will be reviewed and may be updated and findings will be reflected in the Local Plan.

[Sustainable Tourism in the Broads](#) (2016)

Tourism is an important part of the local economy, and for the wider economy as many businesses, located outside of the Broads, rely on the Broads. The Strategy will be updated during the production of the Local Plan.

[Education Strategy](#) (2017-2022)

The Education Strategy provides a framework for environmental education and wider outreach in the Broads, including the [Broads Curriculum](#).

[Volunteer Strategy](#) (2017-2022)

The Volunteer Strategy outlines how the Broads Authority uses volunteers to help its work in the Broads, and identifies objectives to develop and refine our volunteer offer.

[Broads Climate Change Adaptation Plan](#) (2016) and [Cutting the Broads' Carbon Footprint](#) (ongoing)

The Broads Authority, like many other Authorities, has declared a climate emergency. A lot of work is ongoing on the issue of climate change mitigation and adaptation. Climate change will be a fundamental theme in the Local Plan and the Broads Plan, and the Authority's Climate Reduction Project Manager will provide advice.

[Knackers Wood Water Recycling Centre Joint Position Statement](#) (2017)

Produced in 2017, this Statement will be reviewed and updated. Depending on the current position, development may still be difficult to bring forward in Horning, until the capacity issues at the Water Recycling Centre are addressed.

[Mooring Design Guide](#) (2015)

Moorings, including their design and availability, is a key consideration for the Broads. The topics covered in this guide will be important when producing the Local Plan. The need to review and update this guide will be scoped out during the Local Plan production alongside the potential to incorporate elements of the guide into the Local Plan.

[River bank stabilisation guide](#) (2015)

Most of the Broads is water and so there are many river banks. With natural erosion and the effects of climate change, as well as the need to protect the character of the area, the topics covered in this guide will be important when producing the Local Plan. The need to review and update this guide will be scoped out

during the Local Plan production alongside the potential to incorporate elements of the guide into the Local Plan.

[Peat Guide](#) (2021)

With part of the Broads being peat soils and pressures from development, and considering the special qualities of peat, peat will be an important consideration in the Local Plan. The potential to incorporate elements of the guide into the Local Plan will be reviewed.

[Biodiversity Enhancements Guide](#) (2016)

Protecting and enhancing biodiversity is an important theme in the Local Plan and the Broads Plan. It is anticipated that over the coming months/years the need for biodiversity net gain will be a requirement, which could inform the review of this guide.

[Planning for waterside bungalows/chalets](#) (2016)

There are many riverside bungalows and chalets, which are part of the character of the area, and with owners often wishing to undertake work to them, these buildings will be an important consideration when producing the Local Plan. The need to review and update this guide will be scoped out during the Local Plan production, alongside the potential to incorporate elements of the guide into the Local Plan.

[Guide to integrating development into the Broads Landscape](#) (2017)

Protecting and enhancing landscape character will be an important theme in this Local Plan. The need to review and update this guide will be scoped out during the Local Plan production alongside the potential to incorporate elements of the guide into the Local Plan.

[Annual Monitoring Reports](#) (various years)

The most recent AMRs (2019/20 and 2020/21) will be of particular relevance to the Broads Plan review as they are the first to reflect the 2019 Local Plan; showing, for example, where some policies are used more than others or where schemes tend to depart from some policies.

[Statement of Community Involvement](#) (2020)

The SCI sets out how we will consult on the Local Plan, Broads Plan and other key documents. The SCI may need to be updated to reflect Covid-19 social distancing requirements during public consultation on these documents.

[Broads Biodiversity and Water Strategy](#) and [action plan](#) (2019)

Protecting and enhancing biodiversity will be an important theme in the Local Plan and the Broads Plan. We will work closely with our ecologists and external environment advisors when producing the plans.

[Evidence Base](#) and [Examination Library](#) to support the 2019 Local Plan

The evidence base produced to support the last Local Plan may still be relevant to the new Local Plan and will be reviewed and updated as required.

[Management of the Marshes](#) (2014)

This document is an analysis of the intentions of farmers and landowners in respect of marsh management post ESA and Environmental Stewardship.

A3.10. Neighbourhood Plans

Numerous Neighbourhood Plans are in production, and details are on the Authority's website at [Neighbourhood planning \(broads-authority.gov.uk\)](https://www.broads-authority.gov.uk). The following Plans have been adopted:

- [Acle](#) (2015)
- [Brundall](#) (2016)
- [Salhouse](#) (2016)
- [Strumpshaw](#) (2014)
- [Wroxham](#) (2019)

The Local Plan will have a site-specific policies section. Neighbourhood Plans will be checked as policies for each area are formulated.

(end of document)