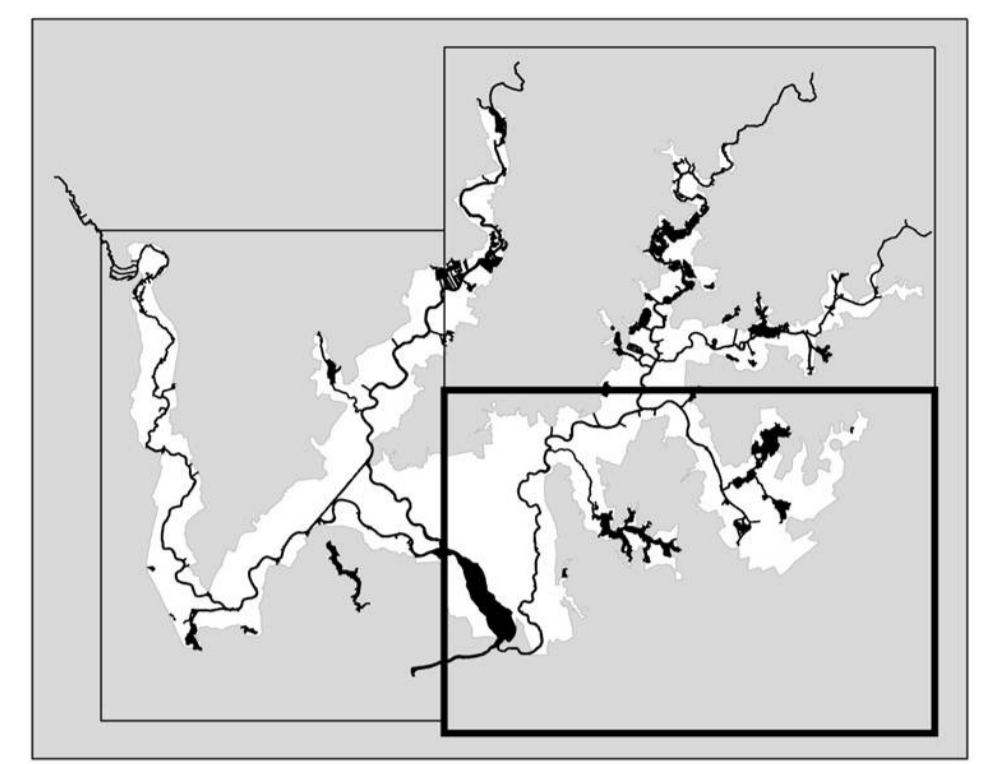
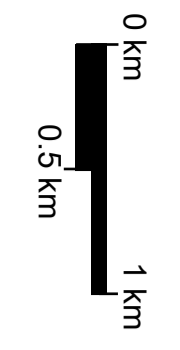


**Broad Local Plan
Nature Conservation Designation &
Heritage Asset,
plus Minerals and Waste Sites**

North East Scale 1:30,000
December 2018

Note: The whole of the Broads area has a designation equivalent to a National Park.



- Listed Mill
- Listed Building
- Local List
- Unlisted Stream/Mill
- SAM
- Registered Parks & Gardens
- Conservation Areas
- Minerals Extraction Sites
- Waste Management Sites
- Key Wastewater Treatment Works
- INTERNATIONAL (Special Areas of Conservation, Special Protection Areas, Ramsars)
- NATIONAL (Special Sites of Scientific Interest, National Nature Reserves)
- LOCAL (County Wildlife Sites, Local Nature Reserves)
- Norfolk Coast Area of Outstanding Natural Beauty

© Crown Copyright (Land database rights) 2018. OS 100021573. You are granted a non-exclusive, royalty free, revocable licence solely to view the licensed data for non-commercial purposes for the period during which the Broads Authority makes it available. You are not permitted to copy, sub-license, distribute, sell or otherwise make available the licensed data to third parties in any form. Third party rights to enforce the terms of this licence shall be reserved to OS. © Historic England 2018. © Natural England 2018. Ordnance Survey data. The Historic England GIS Data contained in this material was obtained on 10/12/2018. The most publicly available up to date Historic England GIS Data can be obtained from www.historicengland.org.uk. © Norfolk County Council. © Suffolk Biological Records Service.

