

Fishing from land

- You may only fish at the discretion of the landowner and you could be trespassing if you do not have permission.
- When picking your fishing spot, be mindful of other river users. Pick a spot where approaching boats can see you.
- If fishing close to boats, be considerate and don't scatter bait over their decks. Try using a pole cup to place your bait, rather than a catapult.
- Keep your distance from moored boats and respect their privacy.
- Remember it is an offence not to give way to boats trying to moor up. This applies particularly to boats under sail and electric boaters wishing to use the electric charging points.
- Always keep the pathway clear of equipment for footpath users.

Recycle it!

Try to recycle your rubbish if possible.



Never leave your rubbish on the bank, as it is unsightly and harmful to wildlife and the environment.

- ★ Wildlife in distress - tel RSPCA 08705 555999
- ★ Environmental incidents such as pollution or unusual numbers of dead fish tel Environment Agency 0800 807060

Help!

Try to take a mobile phone, make sure it is charged and know your number.

Useful numbers

Emergencies 999

Coastguard, Police, Ambulance, Fire

Problems/advice Broads Radio Control

Broads Authority 01603 756056

Police 0845 4564567

non-emergency number for crime and anti-social behaviour

If you have to telephone in an emergency be as specific as possible about your location. Give:

- the name of the boat
- how many people are on board
- the name of the river
- the nearest village
- any nearby landmarks/post number
- the nearest 24 hour mooring site - this may include a grid reference

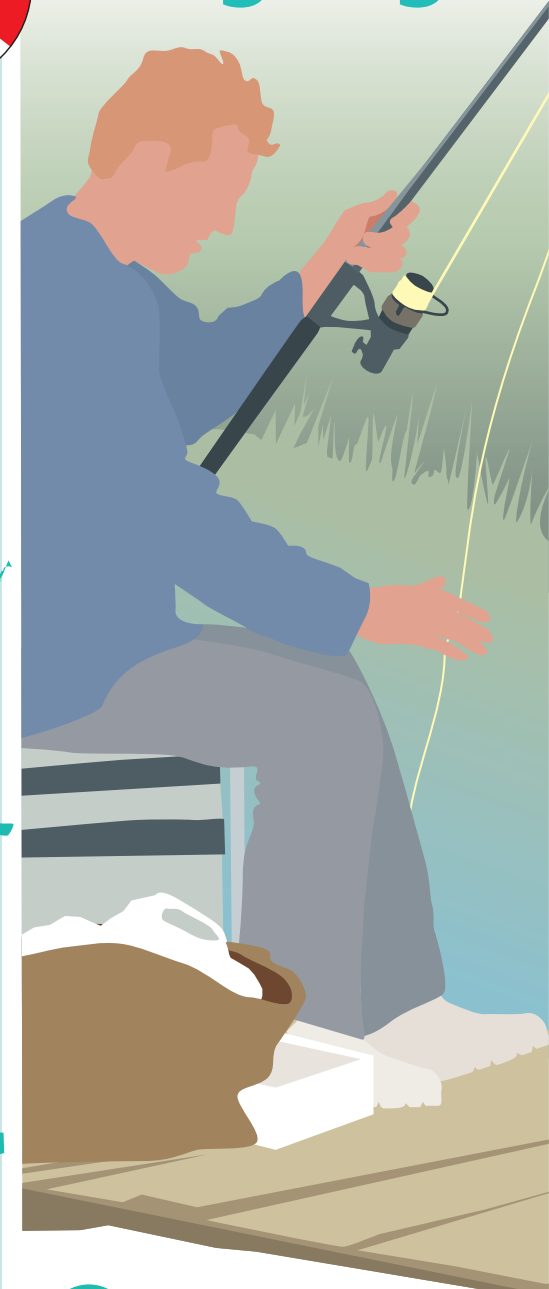


5k0409

Further information, Byelaws and Better Boating DVD available from the Broads Authority, Dragonfly House, 2 Gilders Way, Norwich NR3 1UB tel 01603 610734 fax 01603 756069 broads@broads-authority www.broads-authority.gov.uk



Angling



Broads Authority
The Broads - a member of the National Park family



Going fishing?

The Broads is a very good place for angling and following these simple hints will help you enjoy it.

Remember that to fish in The Broads you need a current Environment Agency licence, available from post offices or the Environment Agency website.

In general there is a closed season on all rivers and broads for coarse fishing from 15 March to 15 June inclusive. **Do not fish during this period.** Local byelaws also apply.

To find out more about angling in The Broads, try the following places:

Broads Information Centres:

Beccles tel 01502 713196

Hoveton tel 01603 782281

Ranworth tel 01603 270453

Broads Authority tel 01603 610734

Environment Agency tel 08708 506 506

www.environment-agency.gov.uk

Contact details for licensed and qualified coaches in Norfolk and Suffolk:


National Federation of Anglers

www.nfadirect.com

Professional Anglers Association

www.paauk.com

Take care of yourself

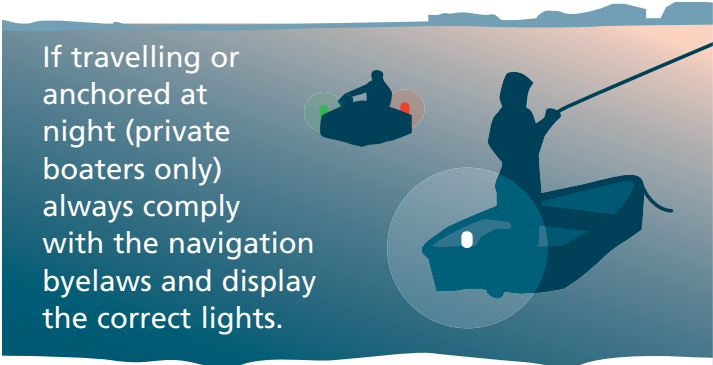
- Don't fish near power lines - LOOK OUT, LOOK UP! 
- Wear appropriate footwear and be careful of slippery surfaces close to the water.
- Clean your hands with antiseptic wipes before eating and drinking.
- Beware of Weil's disease (leptospirosis) - cover all cuts and grazes with waterproof plasters. Weil's disease is a very rare but serious infection with flu-like symptoms. If you have any concerns seek medical advice immediately.

Take care of your gear

- Ask permission if you need to board a boat to retrieve any gear.
- If you accidentally get your hook caught in a boat's mooring ropes or in overhanging branches, please make sure, wherever possible, to remove the hook and don't leave it to possibly end up in someone's hand or face.
- It is an offence to leave your rod or pole unattended. It is also harmful to any fish that might be on the hook and to passing wildlife.
- Think of the wildlife and don't throw away any line or weights. If you find any discarded tackle, please dispose of it responsibly.

Out on the water

- Always wear a life-jacket.
- Take a mobile phone and let others know where you are going and when you come back - **especially if you are out on your own.**
- Watch your speed and wash.
- Be considerate where you moor up and don't be a navigation hazard.
- Never tow your keep net.
- You can fish from any moored motorised boat but it is an offence to fish from any moving motorised boat.
- Make sure your mooring lines do not obstruct the path.
- Remember, it is best not to drink alcohol while out on the water.



If travelling or anchored at night (private boaters only) always comply with the navigation byelaws and display the correct lights.