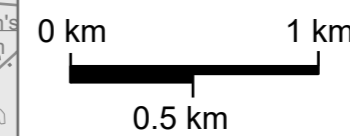
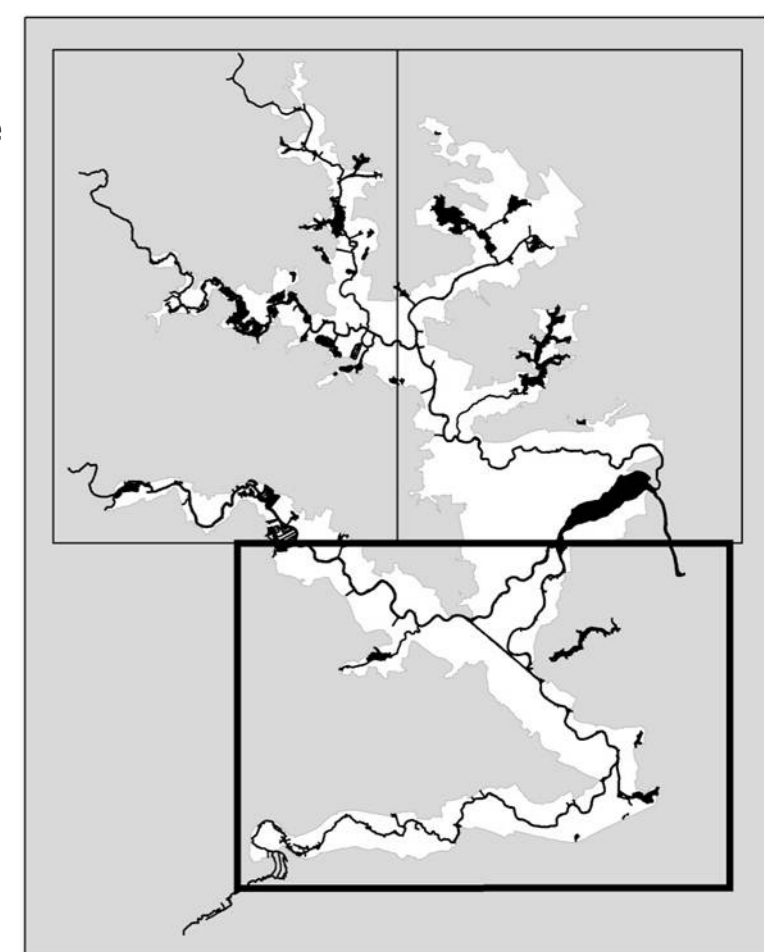


**Broads Local Plan**  
Nature Conservation Designations &  
Heritage Assets plus Minerals and Waste  
South Scale 1:30,000  
December 2018



**Key**

- Listed Mill
- Listed Building
- Local List
- Unlisted Site/Mill
- SAM
- Registered Parks & Gardens
- Conservation Areas
- Minerals Extraction Sites
- Waste Management Sites
- Key Wastewater Treatment Works
- INTERNATIONAL (Special Areas of Conservation, Special Protection Areas, Ramsars)
- NATIONAL (Special Sites of Scientific Interest, National Nature Reserves)
- LOCAL (County Wildlife Sites, Local Nature Reserves)



© Crown copyright (and database right) 2018, OS 100021573. You are granted a non-exclusive, royalty free, revocable licence solely to view the Licensed Data for non-commercial purposes for the period during which the Broads Authority makes it available. You are not permitted to copy, sub-license, distribute, sell or otherwise make available the licensed Data to third parties in any form. Third party rights to enforce the terms of this licence shall be reserved to OS. © Historic England 2018. © Natural England 2018. Contains Ordnance Survey data. The Historic England GIS Data contained in this material was obtained up to date Historic England GIS Data can be obtained from www.HistoricEngland.org.uk. © Norfolk County Council. © Suffolk Biological Records Service.

