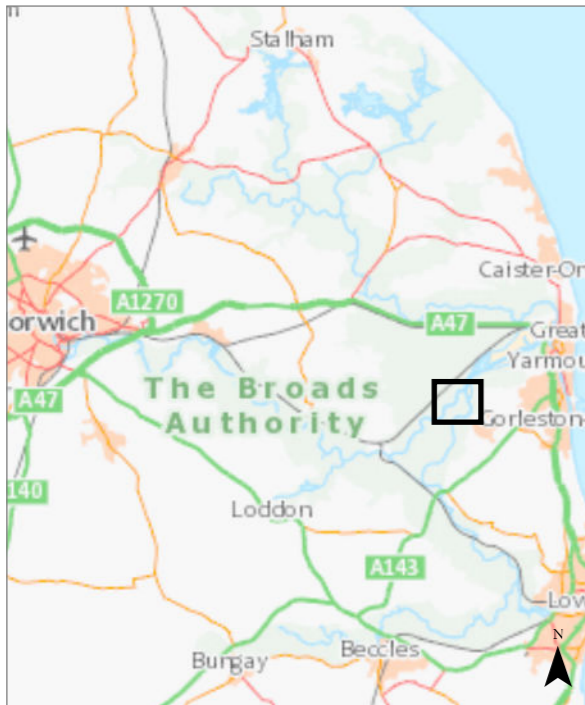
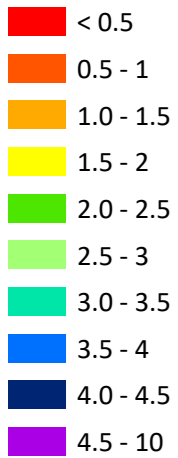


## Turntide Jetty, past Berney Arms (Berney Arms Reach)

The information has been published by the Broads Authority in order to meet its duties as a harbour authority under the Port Marine Safety Code and the requirements of the UK Hydrographic Office. River Yare last surveyed winter 2024/25. River Waveney surveyed 2021.

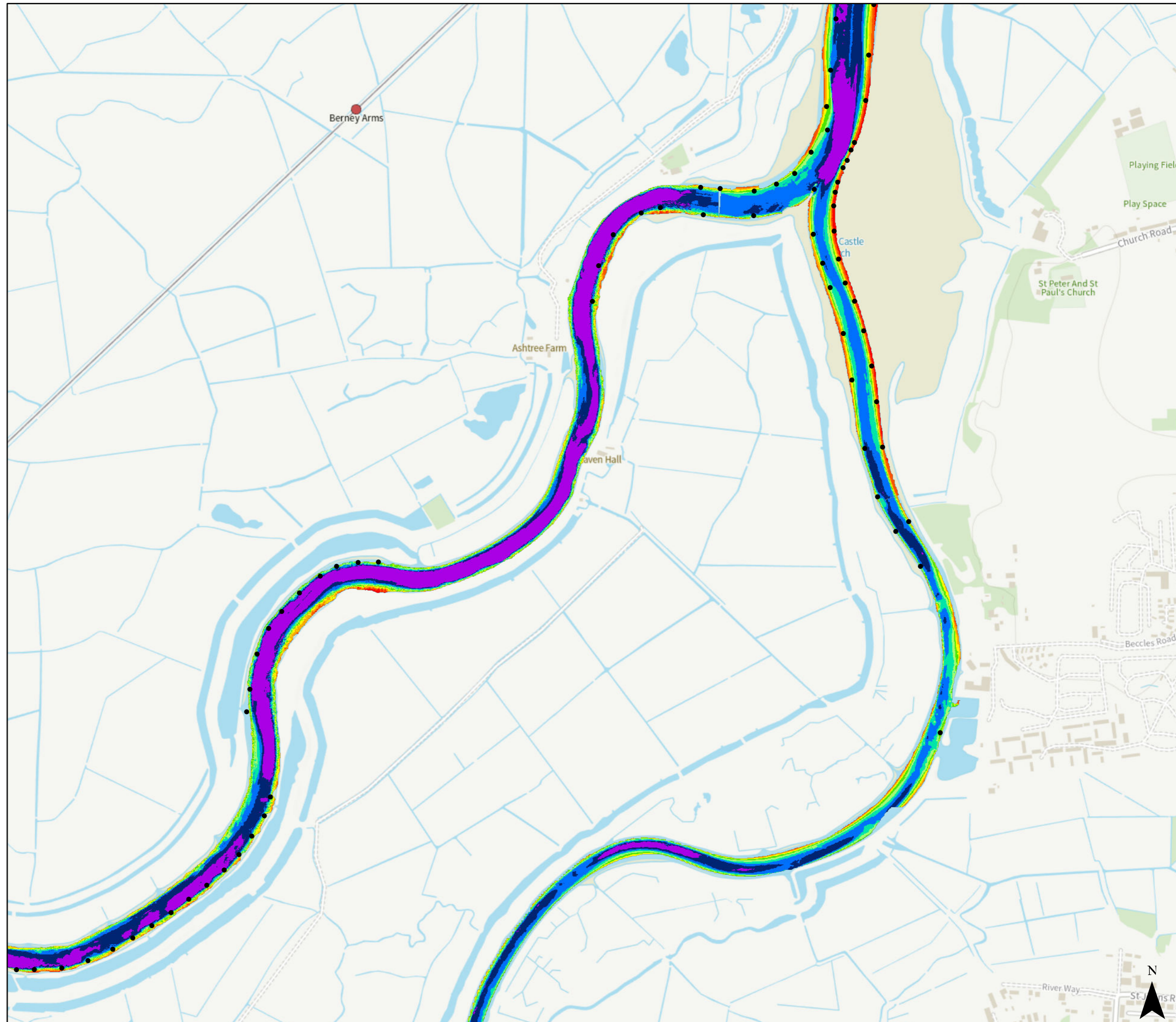


Depth below MLW (m)



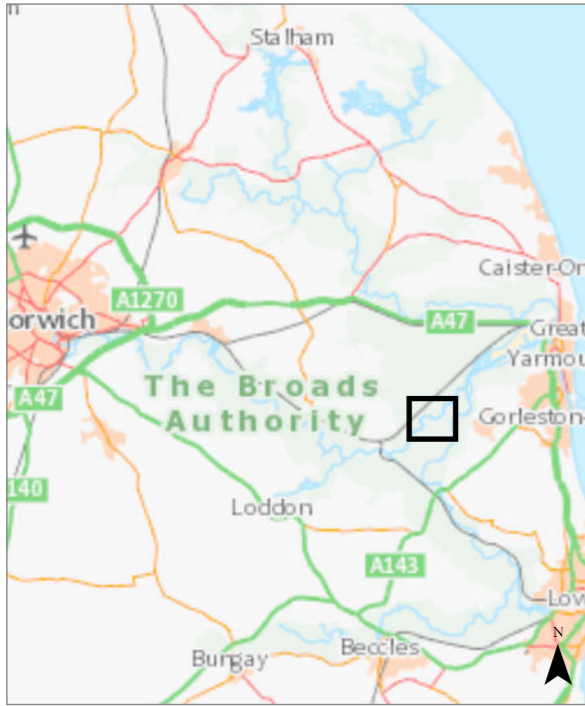
• Post

© Crown copyright [and database rights] 2025 OS AC0000814754. You are permitted to use this data solely to enable you to respond to, or interact with, the organisation that provided you with the data. You are not permitted to copy, sub-licence, distribute or sell any of this data to third parties in any form.

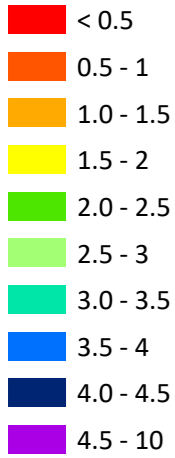


## Stretch past Polkey's Mill and Seven Mile House (Seven Mile Reach)

The information has been published by the Broads Authority in order to meet its duties as a harbour authority under the Port Marine Safety Code and the requirements of the UK Hydrographic Office. Last surveyed winter 2024/25.

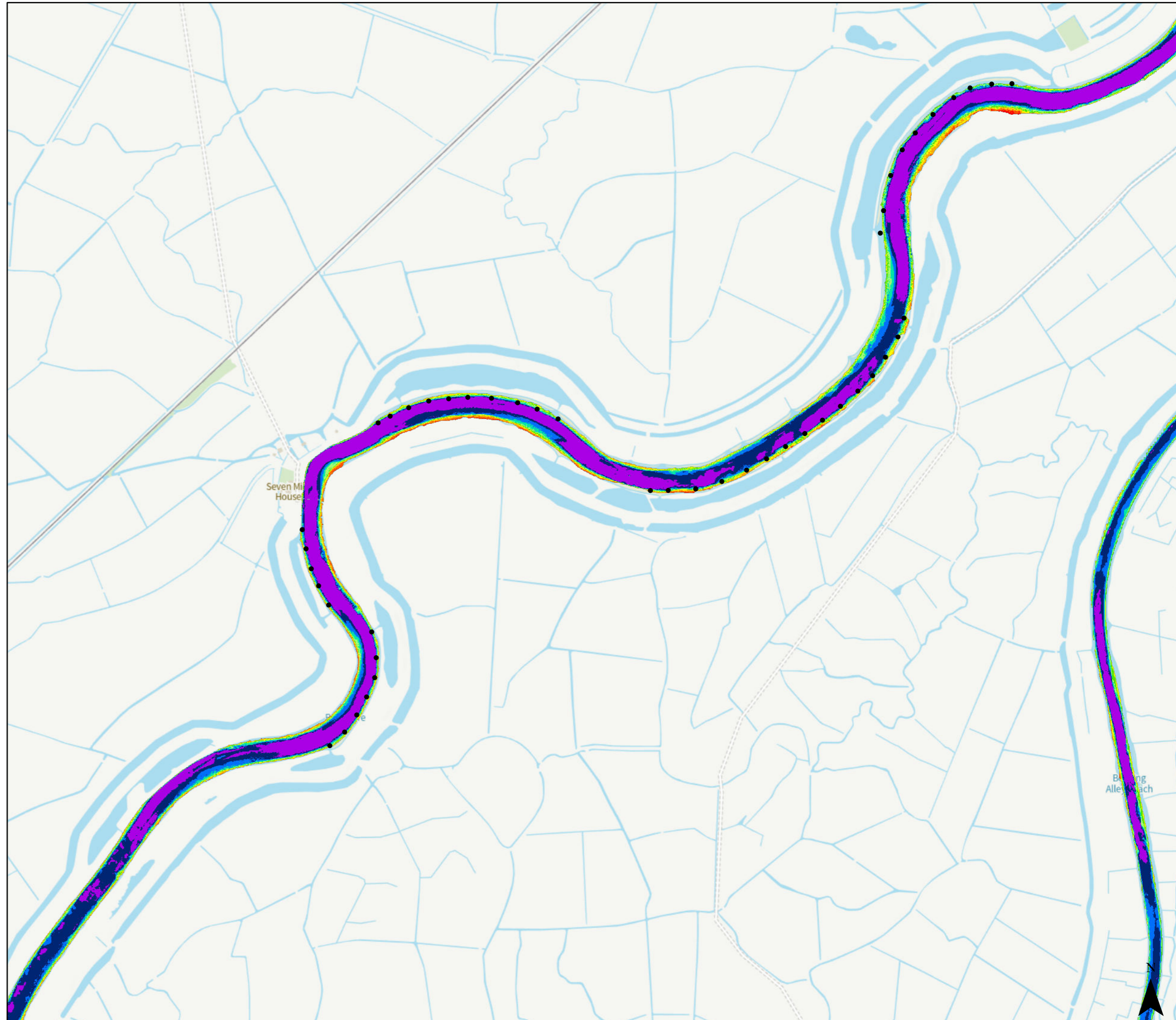


Depth below MLW (m)



• Post

© Crown copyright [and database rights] 2025 OS AC0000814754. You are permitted to use this data solely to enable you to respond to, or interact with, the organisation that provided you with the data. You are not permitted to copy, sublicense, distribute or sell any of this data to third parties in any form.

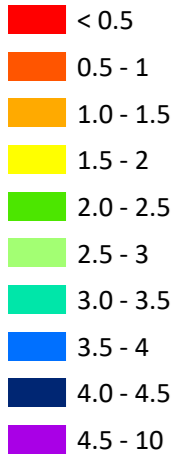


## Upstream of Seven Mile house to Reedham (Reedham Street Reach)

The information has been published by the Broads Authority in order to meet its duties as a harbour authority under the Port Marine Safety Code and the requirements of the UK Hydrographic Office. River Yare last surveyed winter 2024/25. Haddiscoe Cut 2021.



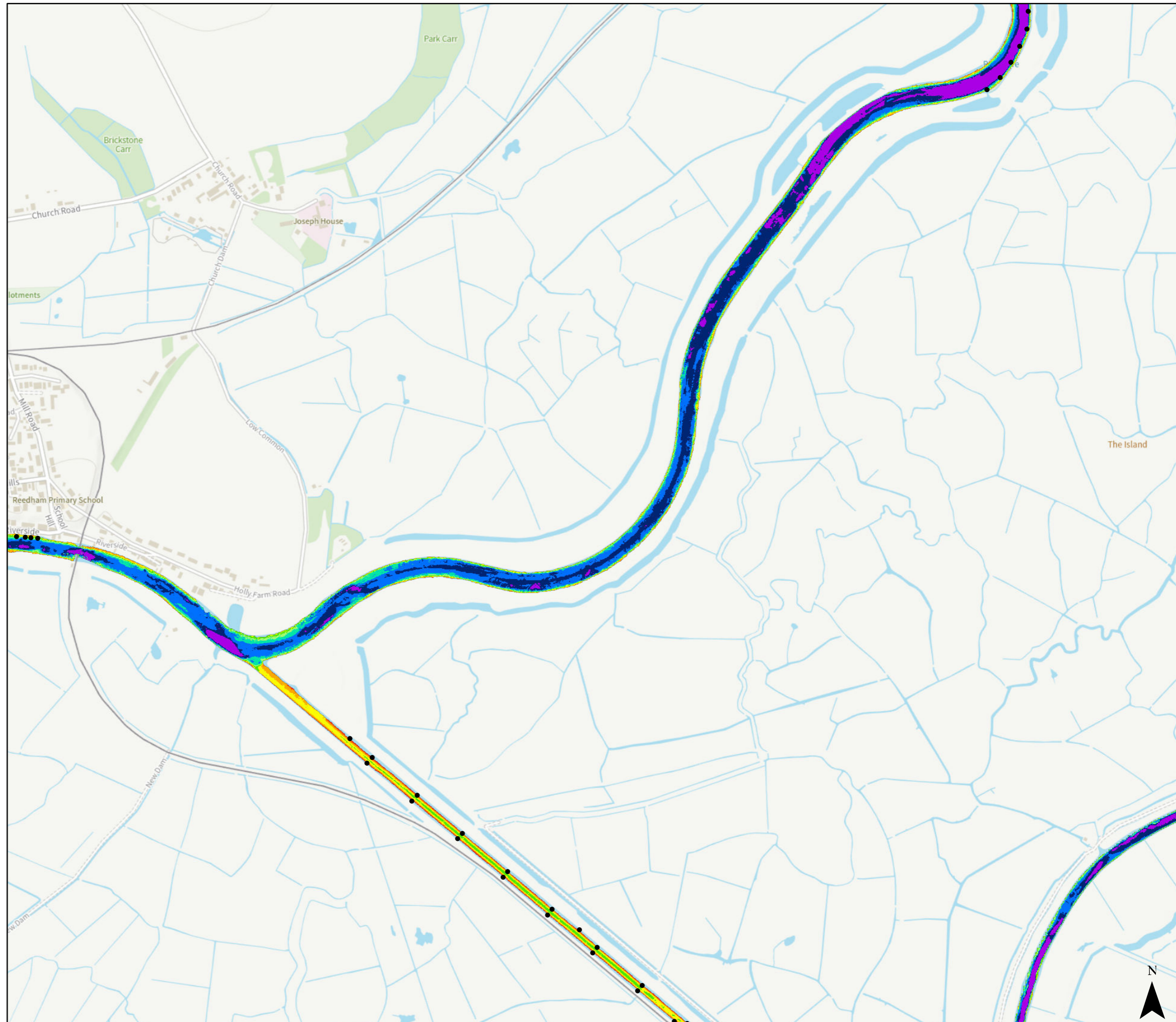
Depth below MLW (m)



• Post

© Crown copyright [and database rights] 2025 OS AC0000814754. You are permitted to use this data solely to enable you to respond to, or interact with, the organisation that provided you with the data. You are not permitted to copy, sub-licence, distribute or sell any of this data to third parties in any form.

0 0.5 Kilometers

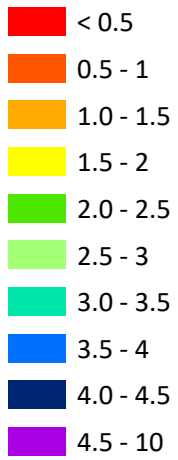


## Haddiscoe New Cut (Reedham to St Olaves)

The information has been published by the Broads Authority in order to meet its duties as a harbour authority under the Port Marine Safety Code and the requirements of the UK Hydrographic Office. Last surveyed 2024.



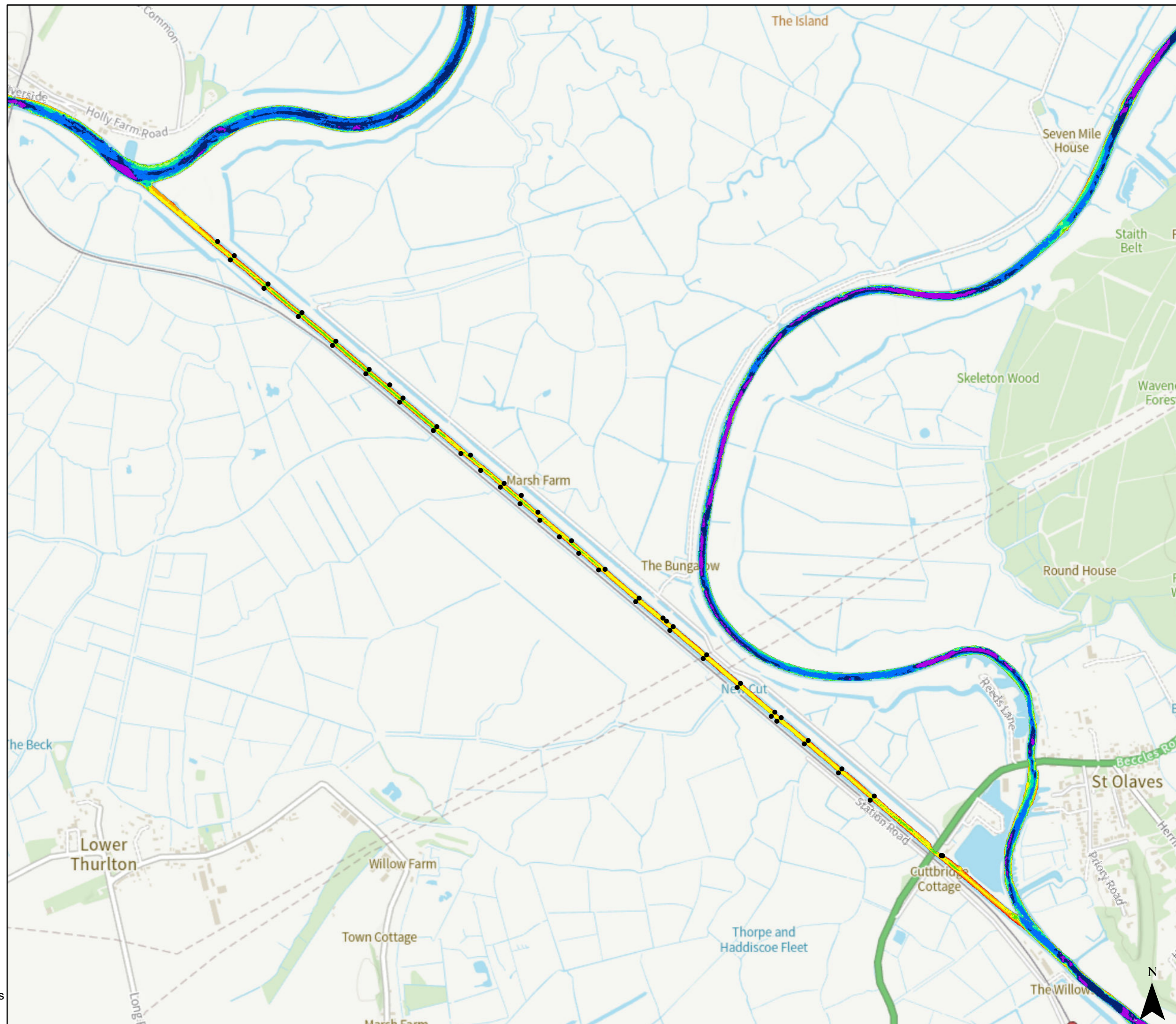
Depth below MLW (m)



• Post

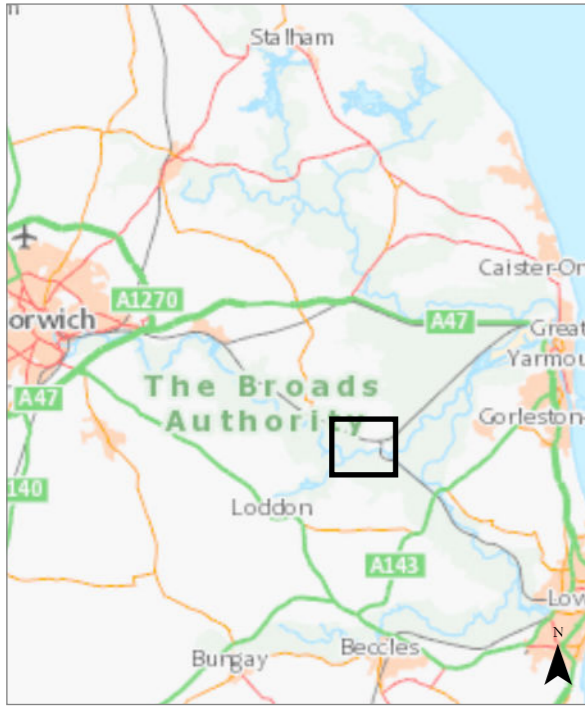
© Crown copyright [and database rights] 2025 OS AC0000814754. You are permitted to use this data solely to enable you to respond to, or interact with, the organisation that provided you with the data. You are not permitted to copy, sub-licence, distribute or sell any of this data to third parties in any form.

0 0.7 Kilometers

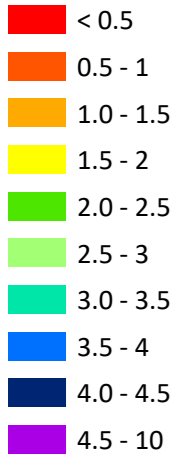


## Reedham to Limpenhoe Mill (Reedham Ferry Reach)

The information has been published by the Broads Authority in order to meet its duties as a harbour authority under the Port Marine Safety Code and the requirements of the UK Hydrographic Office. River Yare last surveyed winter 2024/25. River Chet 2021.



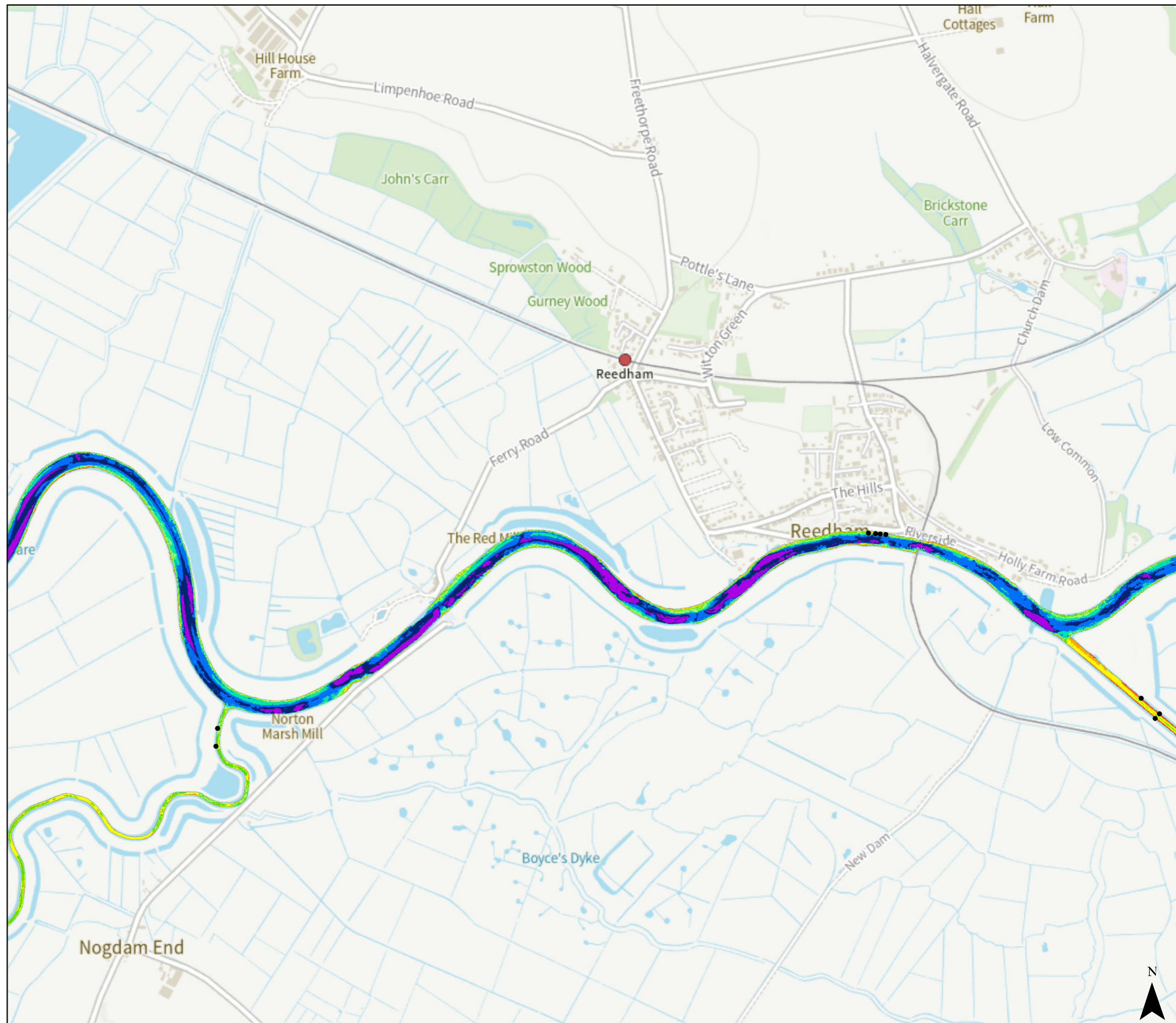
Depth below MLW (m)



• Post

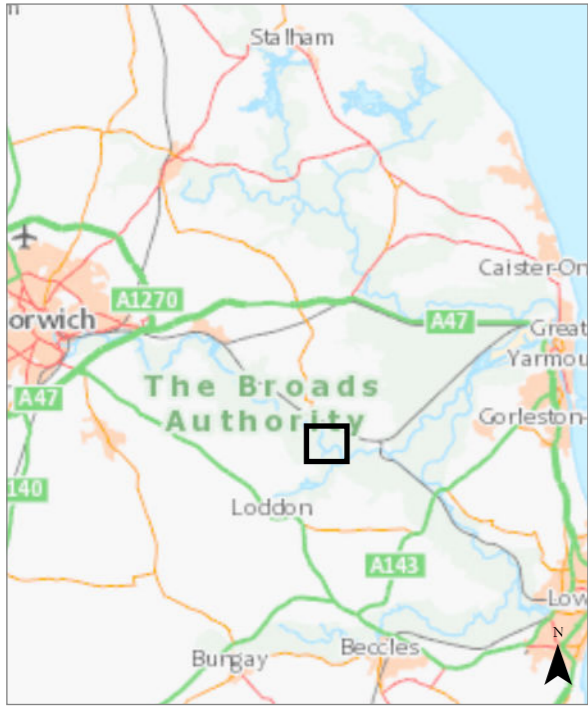
© Crown copyright [and database rights] 2025 OS AC0000814754. You are permitted to use this data solely to enable you to respond to, or interact with, the organisation that provided you with the data. You are not permitted to copy, sub-licence, distribute or sell any of this data to third parties in any form.

0 0.6 Kilometers



# Limpenhoe Mill to Cantley (Limpenhoe Reach)

The information has been published by the Broads Authority in order to meet its duties as a harbour authority under the Port Marine Safety Code and the requirements of the UK Hydrographic Office. Last surveyed winter 2024/25.



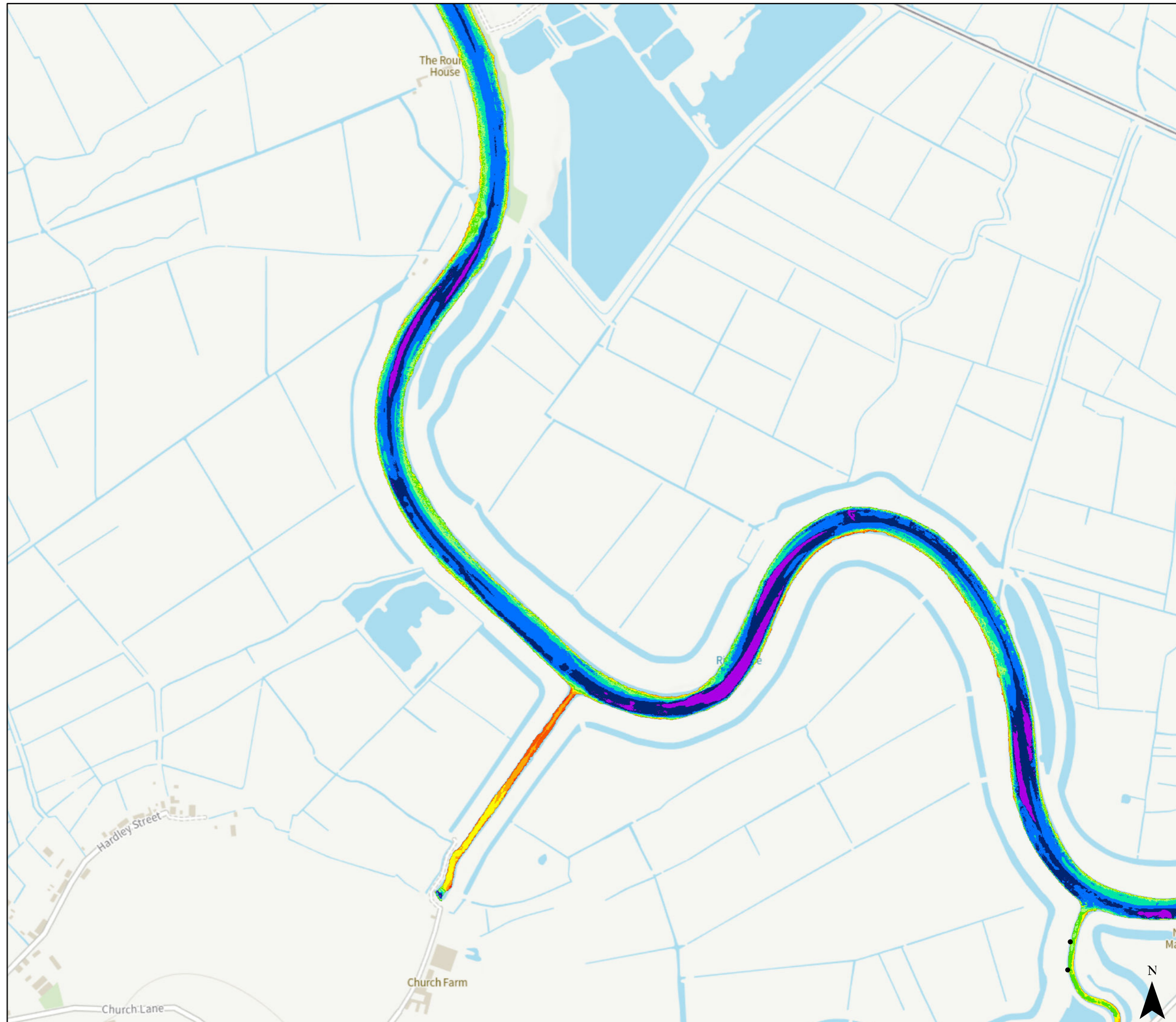
## Depth below MLW (m)

- < 0.5
- 0.5 - 1
- 1.0 - 1.5
- 1.5 - 2
- 2.0 - 2.5
- 2.5 - 3
- 3.0 - 3.5
- 3.5 - 4
- 4.0 - 4.5
- 4.5 - 10

- Post

© Crown copyright [and database rights] 2025 OS AC0000814754. You are permitted to use this data solely to enable you to respond to, or interact with, the organisation that provided you with the data. You are not permitted to copy, sub-licence, distribute or sell any of this data to third parties in any form.

0 0.4 Kilometers

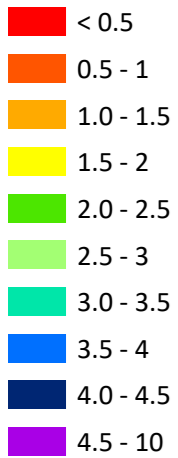


## Cantley to Langley Dyke (Cantley Reach)

The information has been published by the Broads Authority in order to meet its duties as a harbour authority under the Port Marine Safety Code and the requirements of the UK Hydrographic Office. Last surveyed winter 2024/25.



Depth below MLW (m)



• Post

© Crown copyright [and database rights] 2025 OS AC0000814754. You are permitted to use this data solely to enable you to respond to, or interact with, the organisation that provided you with the data. You are not permitted to copy, sub-licence, distribute or sell any of this data to third parties in any form.

0 0.4 Kilometers

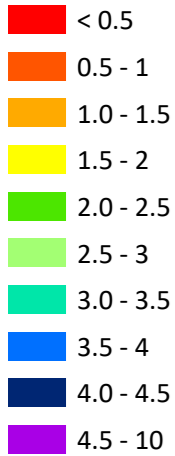


## Langley Dyke to Buckenham Mill (Langley Reach)

The information has been published by the Broads Authority in order to meet its duties as a harbour authority under the Port Marine Safety Code and the requirements of the UK Hydrographic Office. Last surveyed winter 2024/25.

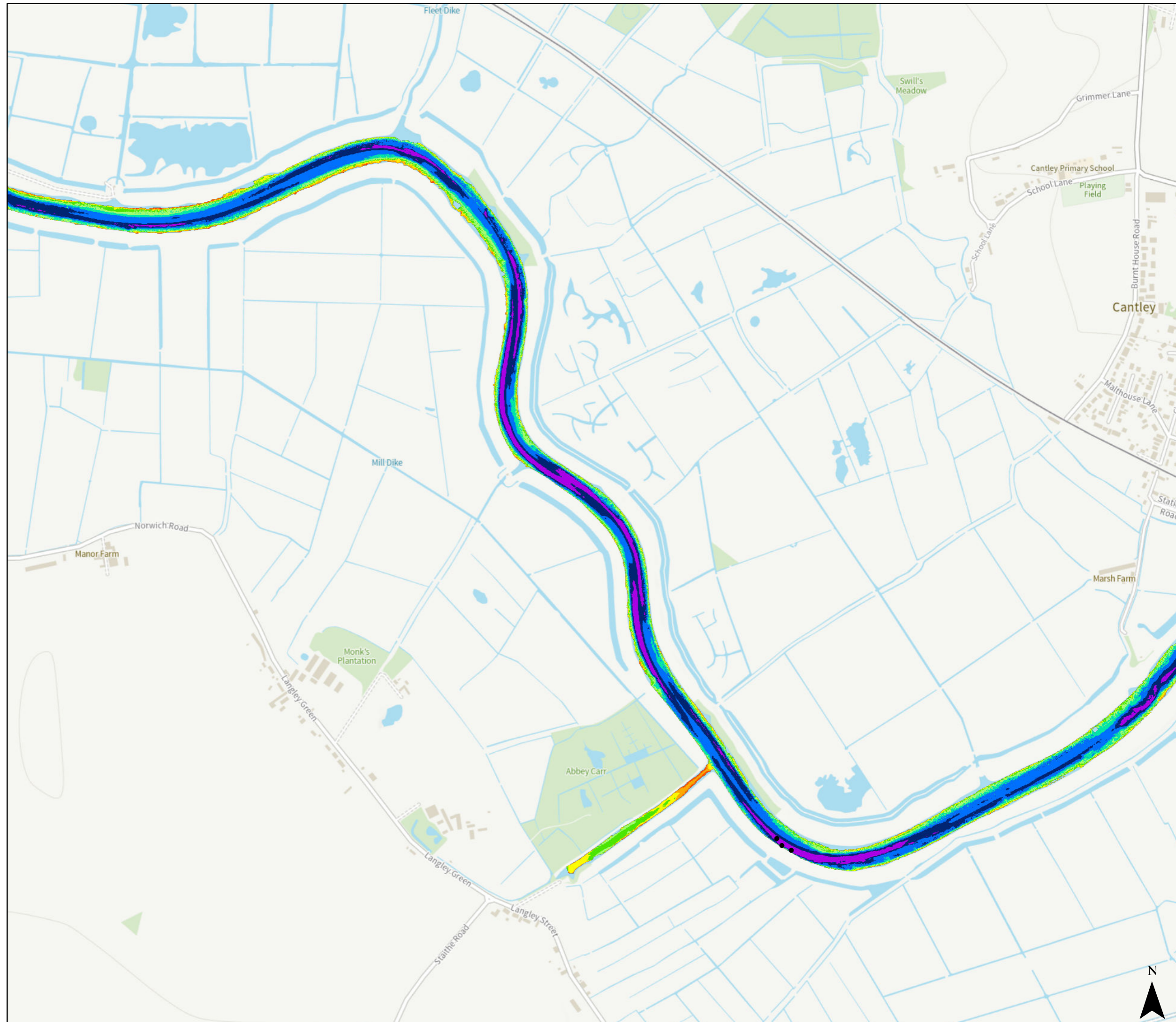


Depth below MLW (m)



• Post

© Crown copyright [and database rights] 2025 OS AC0000814754. You are permitted to use this data solely to enable you to respond to, or interact with, the organisation that provided you with the data. You are not permitted to copy, sub-licence, distribute or sell any of this data to third parties in any form.

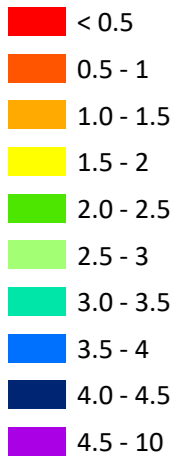


## Buckenham Mill to Strumpshaw Common (Beauchamp Arms Reach)

The information has been published by the Broads Authority in order to meet its duties as a harbour authority under the Port Marine Safety Code and the requirements of the UK Hydrographic Office. Last surveyed winter 2024/25.



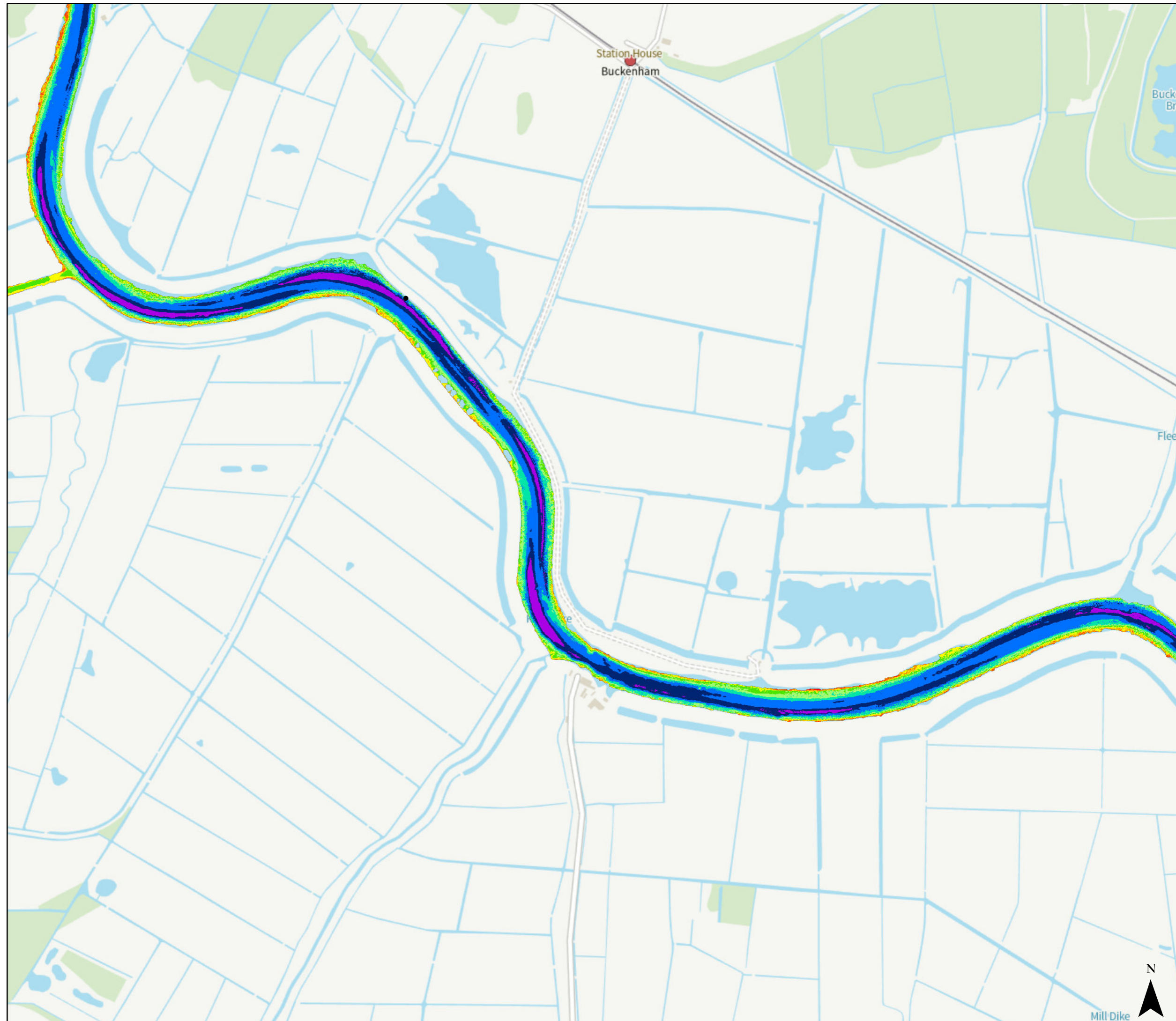
Depth below MLW (m)



• Post

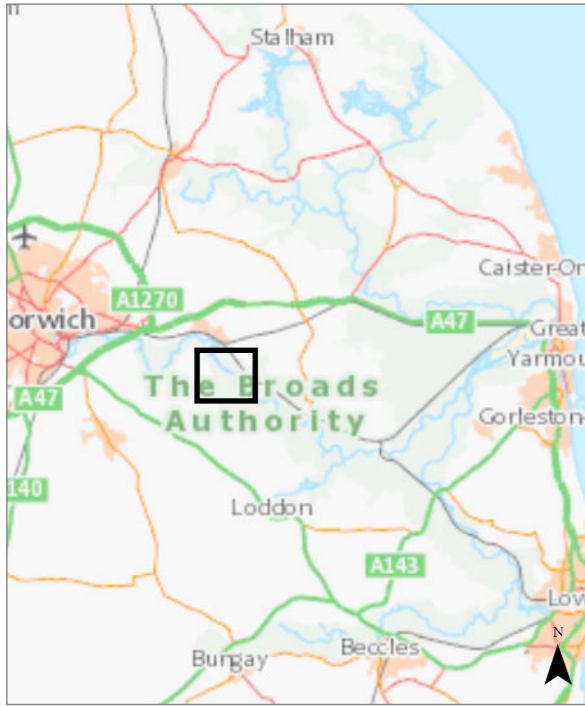
© Crown copyright [and database rights] 2025 OS AC0000814754. You are permitted to use this data solely to enable you to respond to, or interact with, the organisation that provided you with the data. You are not permitted to copy, sub-licence, distribute or sell any of this data to third parties in any form.

0 0.4 Kilometers

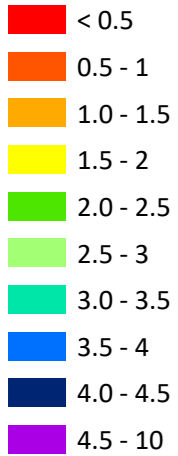


## Strumpshaw Marsh to Brundall Marina (Strumpshaw Reach)

The information has been published by the Broads Authority in order to meet its duties as a harbour authority under the Port Marine Safety Code and the requirements of the UK Hydrographic Office. Last surveyed winter 2024/25.

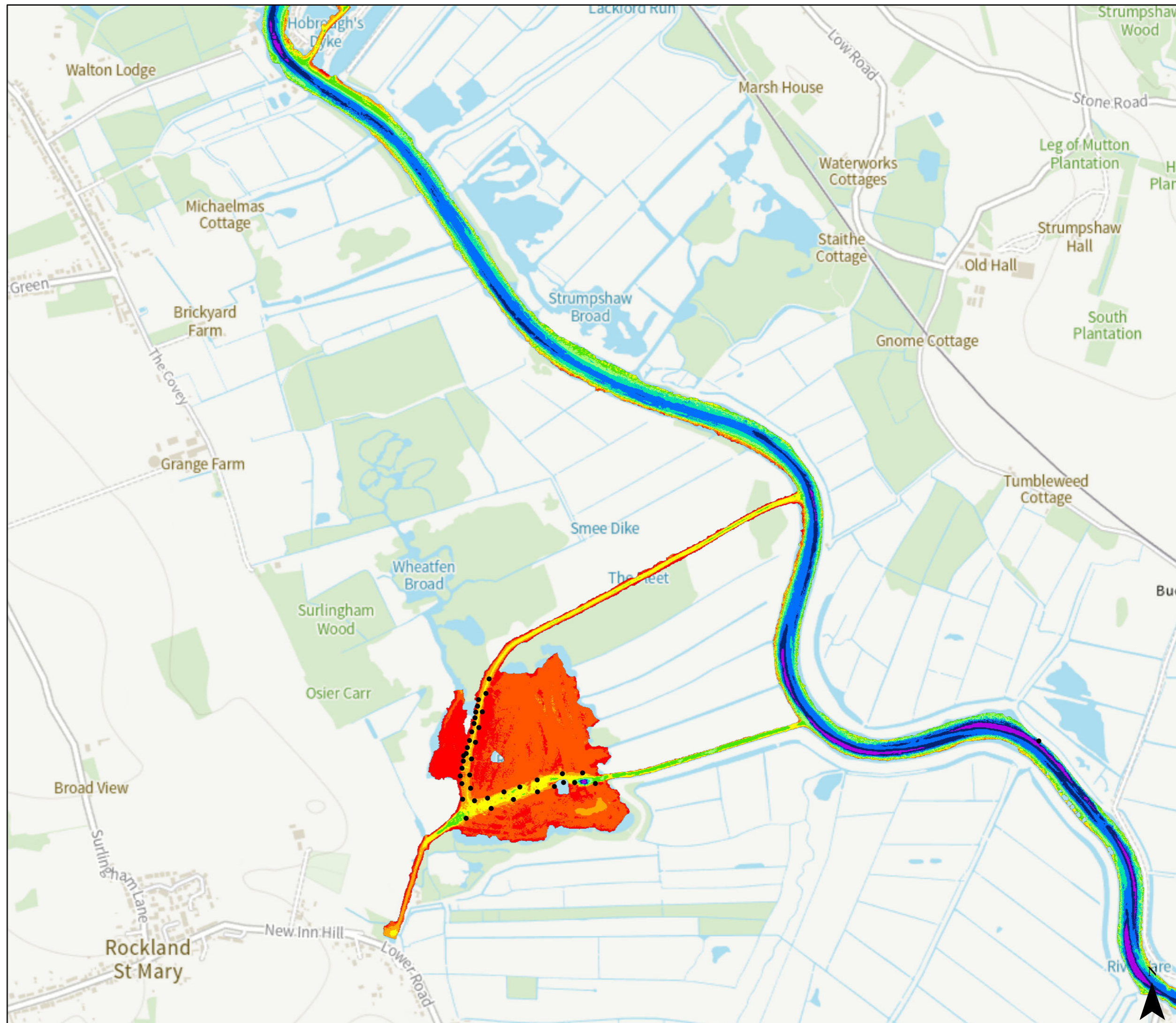


Depth below MLW (m)



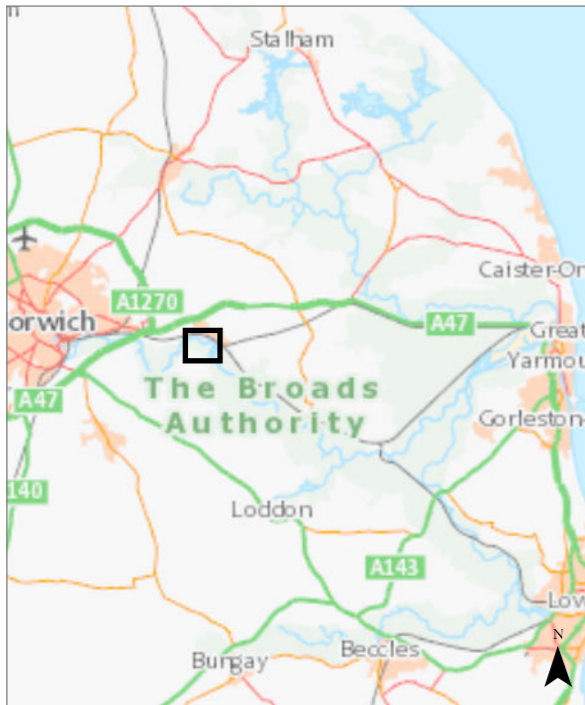
• Post

© Crown copyright [and database rights] 2025 OS AC0000814754. You are permitted to use this data solely to enable you to respond to, or interact with, the organisation that provided you with the data. You are not permitted to copy, sub-licence, distribute or sell any of this data to third parties in any form.

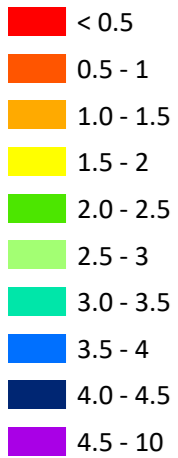


## Brundall Marina to Brundall Gardens Marina (Brundall Reach)

The information has been published by the Broads Authority in order to meet its duties as a harbour authority under the Port Marine Safety Code and the requirements of the UK Hydrographic Office. Last surveyed winter 2024/25.



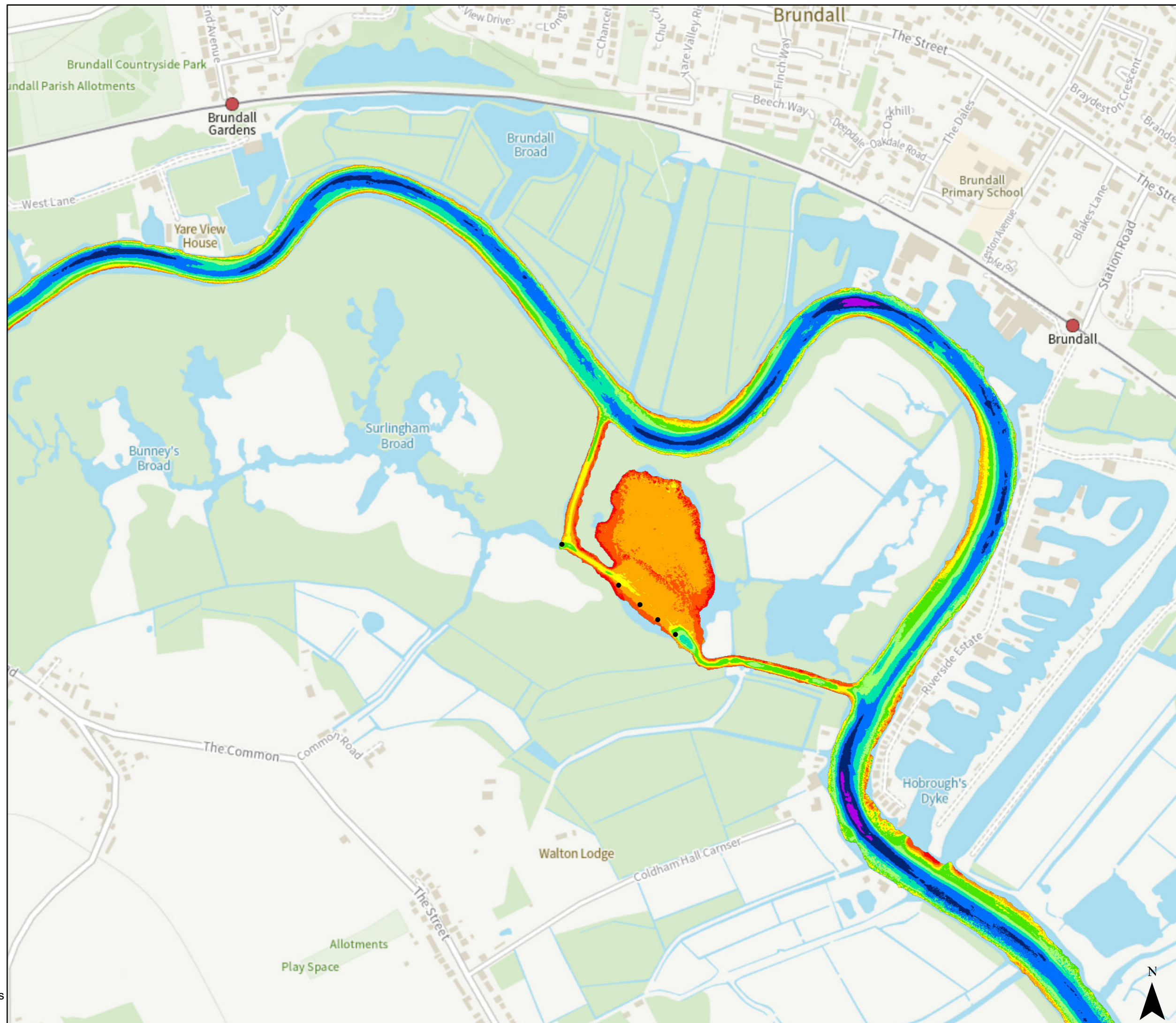
Depth below MLW (m)



• Post

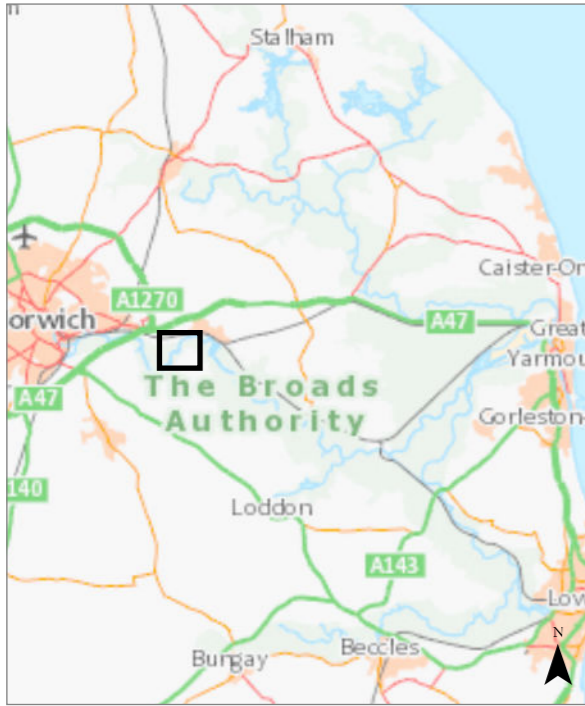
© Crown copyright [and database rights] 2025 OS AC0000814754. You are permitted to use this data solely to enable you to respond to, or interact with, the organisation that provided you with the data. You are not permitted to copy, sub-licence, distribute or sell any of this data to third parties in any form.

0 0.3 Kilometers

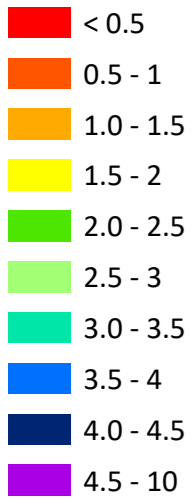


## Brundall Gardens Marina to Postwick Marsh (Surlingham Reach)

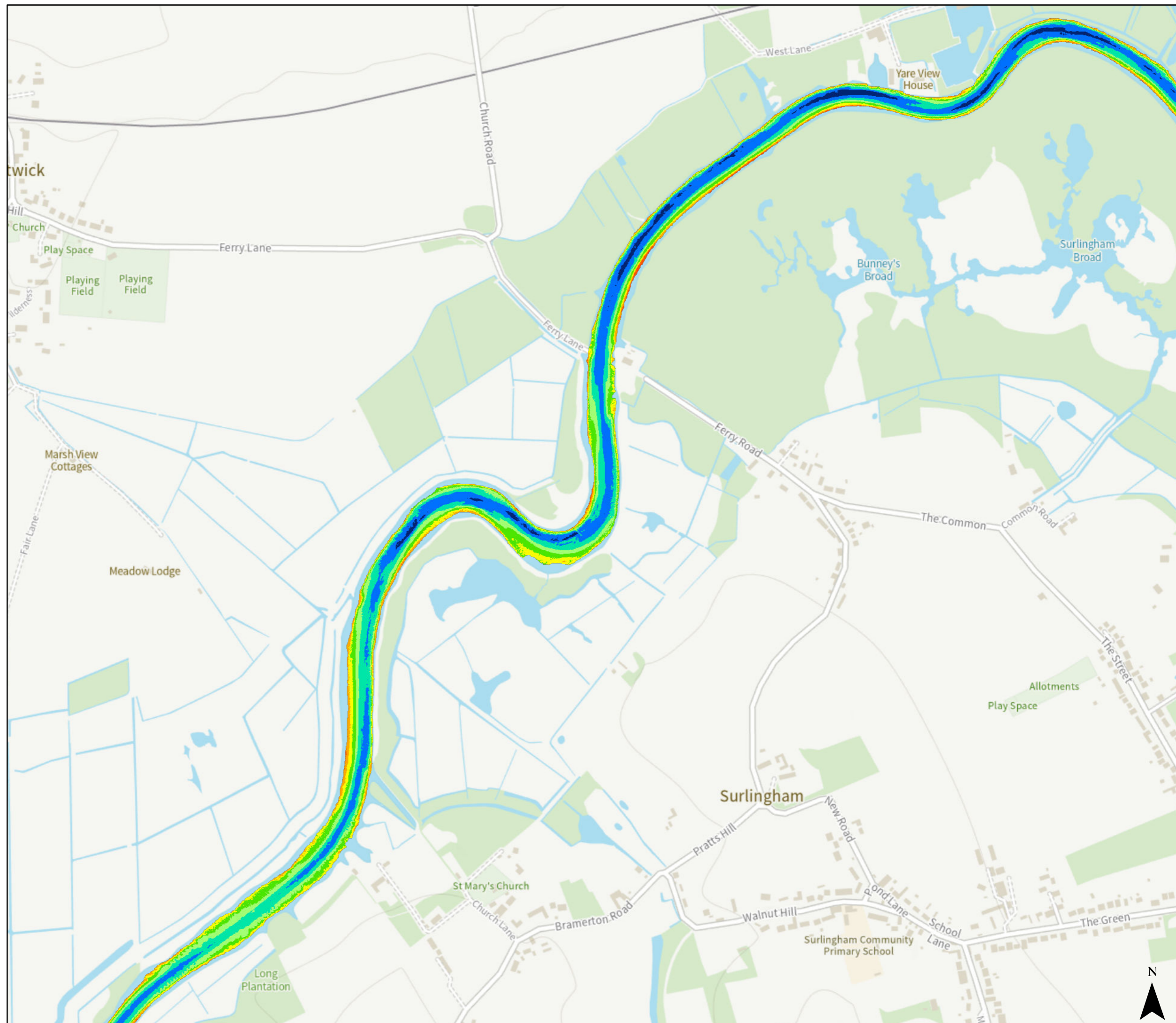
The information has been published by the Broads Authority in order to meet its duties as a harbour authority under the Port Marine Safety Code and the requirements of the UK Hydrographic Office. Last surveyed winter 2024/25.



Depth below MLW (m)

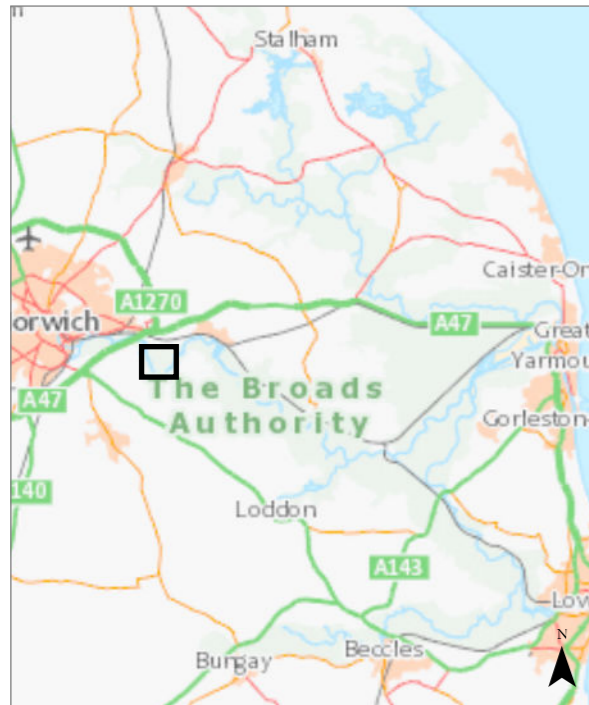


© Crown copyright [and database rights] 2025 OS AC0000814754. You are permitted to use this data solely to enable you to respond to, or interact with, the organisation that provided you with the data. You are not permitted to copy, sub-licence, distribute or sell any of this data to third parties in any form.

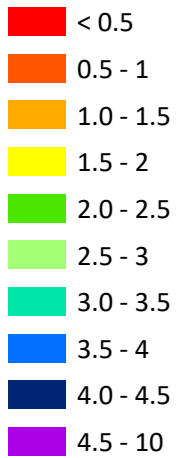


## Postwick Marsh to Kirby Marsh (Bramerton Reach)

The information has been published by the Broads Authority in order to meet its duties as a harbour authority under the Port Marine Safety Code and the requirements of the UK Hydrographic Office. Last surveyed winter 2024/25.



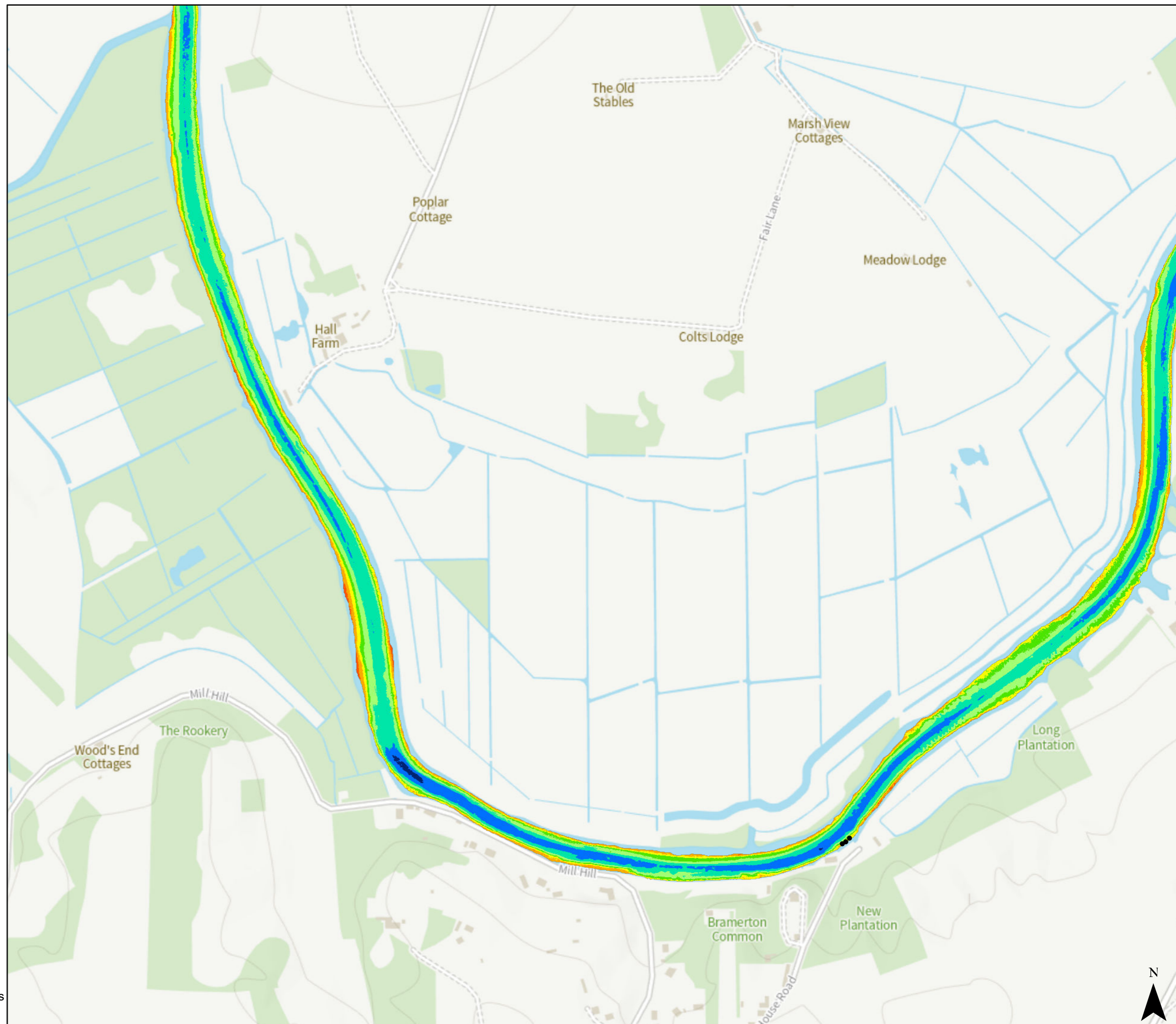
Depth below MLW (m)



• Post

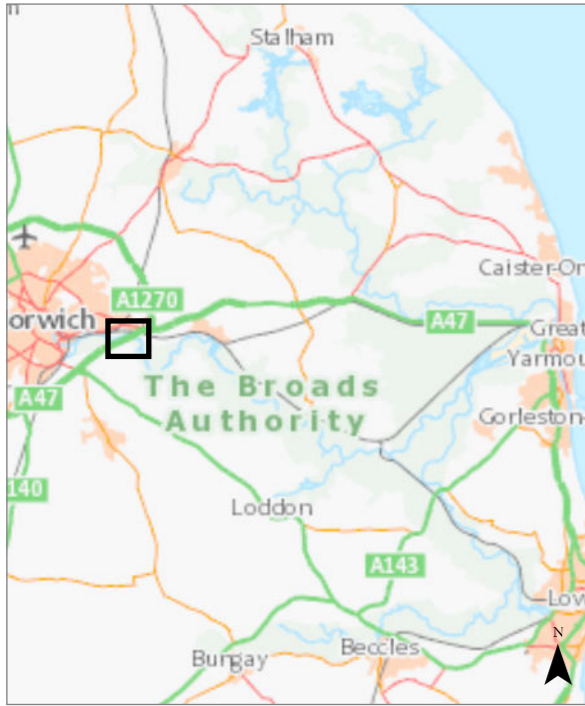
© Crown copyright [and database rights] 2025 OS AC0000814754. You are permitted to use this data solely to enable you to respond to, or interact with, the organisation that provided you with the data. You are not permitted to copy, sub-licence, distribute or sell any of this data to third parties in any form.

0 0.3 Kilometers

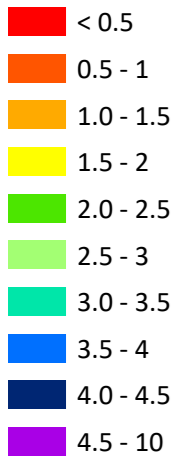


## Kirby Marsh to Thorpe Marshes (Postwick Reach)

The information has been published by the Broads Authority in order to meet its duties as a harbour authority under the Port Marine Safety Code and the requirements of the UK Hydrographic Office. Last surveyed winter 2024/25.



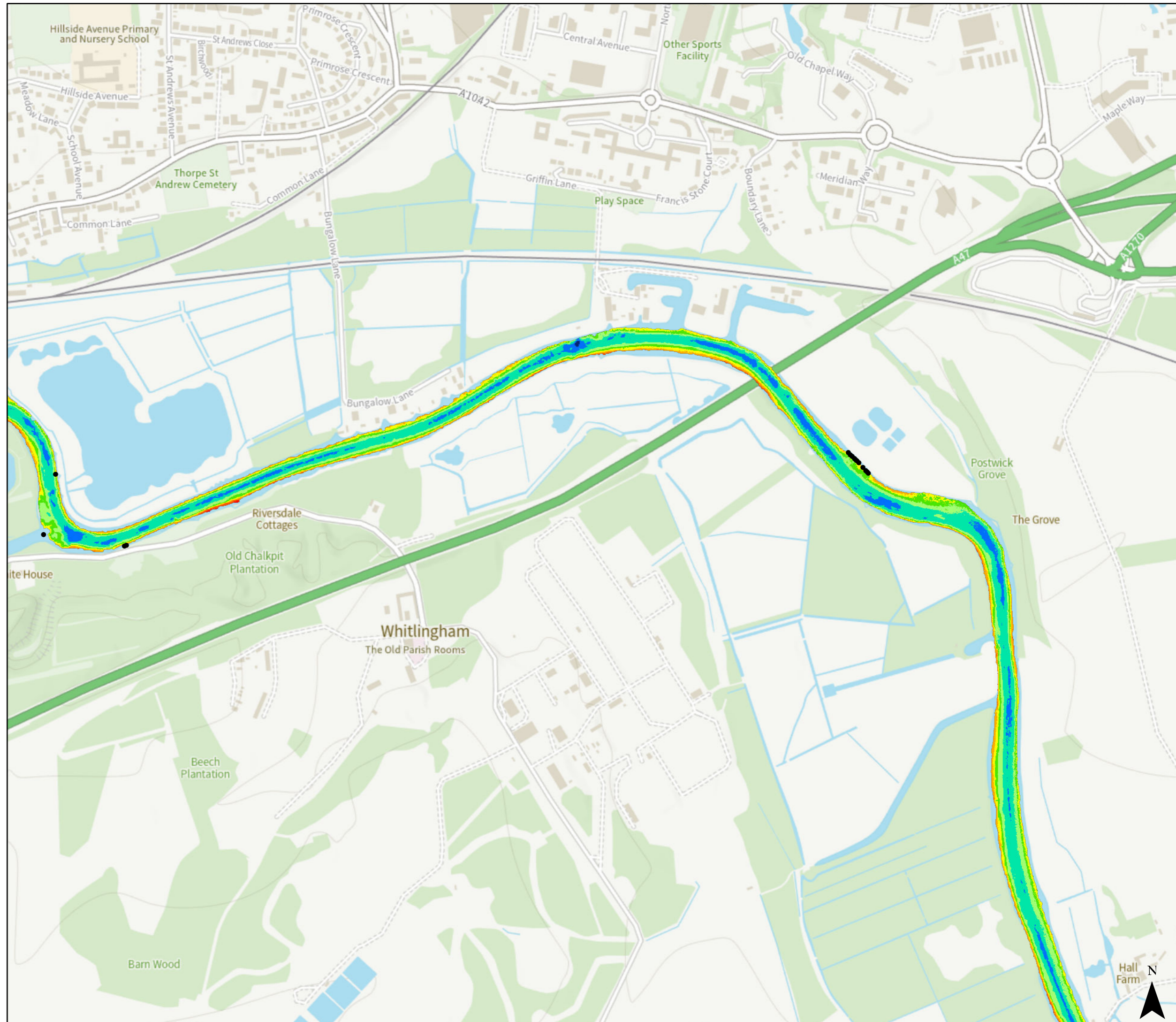
Depth below MLW (m)



• Post

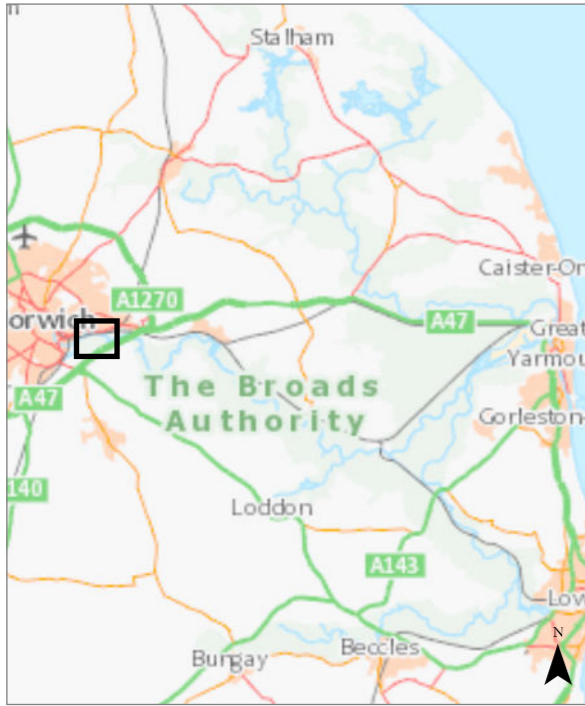
© Crown copyright [and database rights] 2025 OS AC0000814754. You are permitted to use this data solely to enable you to respond to, or interact with, the organisation that provided you with the data. You are not permitted to copy, sub-licence, distribute or sell any of this data to third parties in any form.

0 0.4 Kilometers

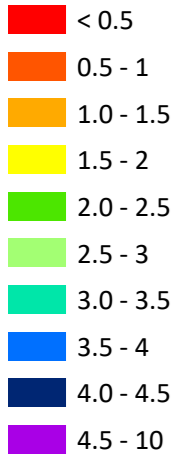


## Thorpe Marshes to Yare/Wensum confluence (Thorpe Reach)

The information has been published by the Broads Authority in order to meet its duties as a harbour authority under the Port Marine Safety Code and the requirements of the UK Hydrographic Office. Last surveyed winter 2024/25.



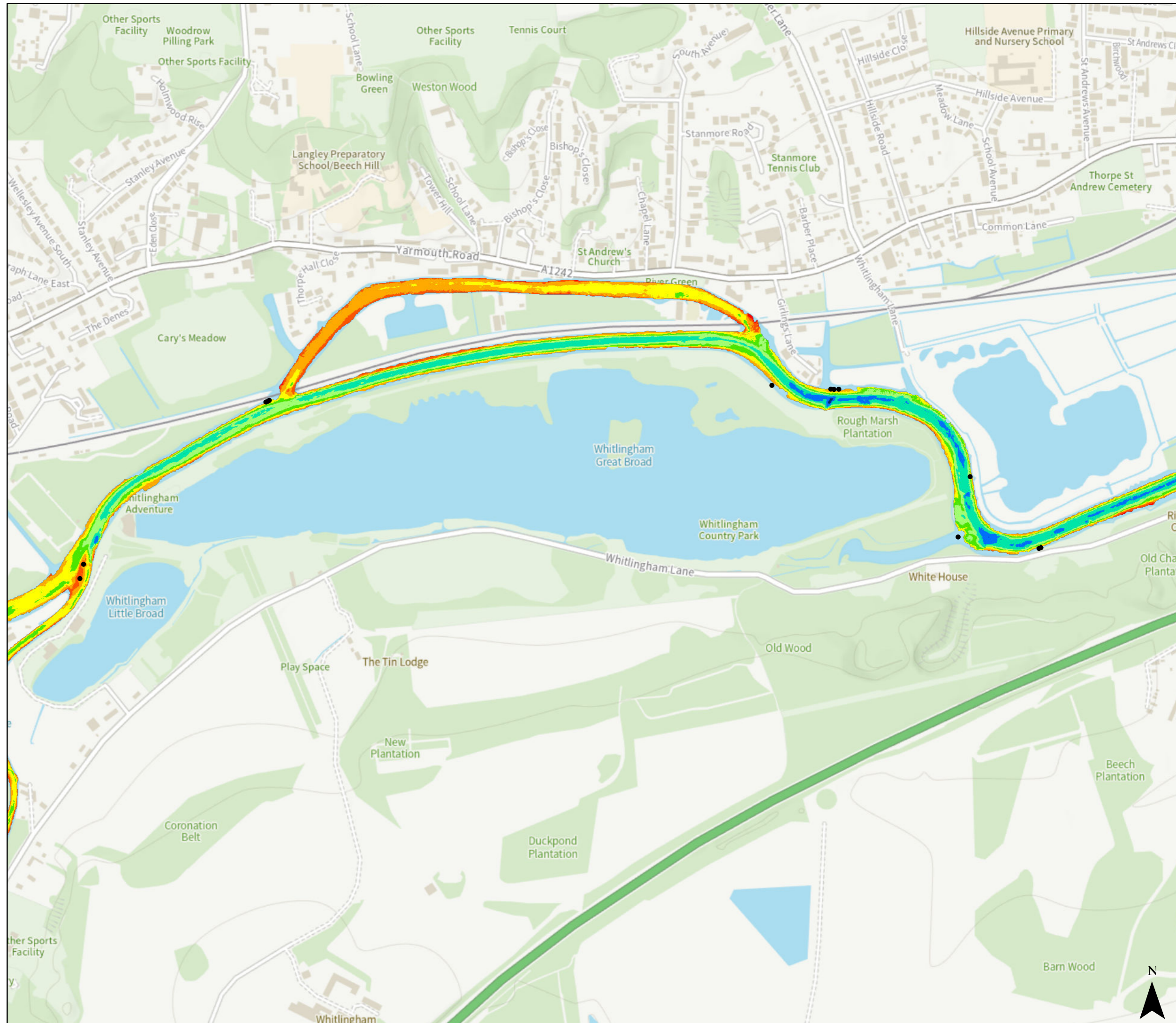
Depth below MLW (m)



• Post

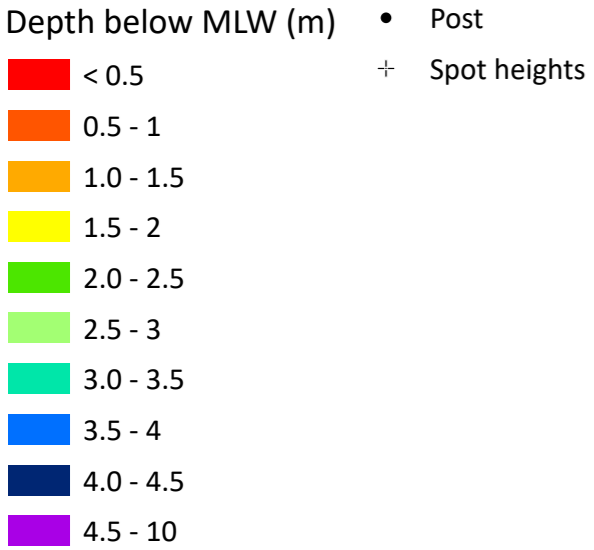
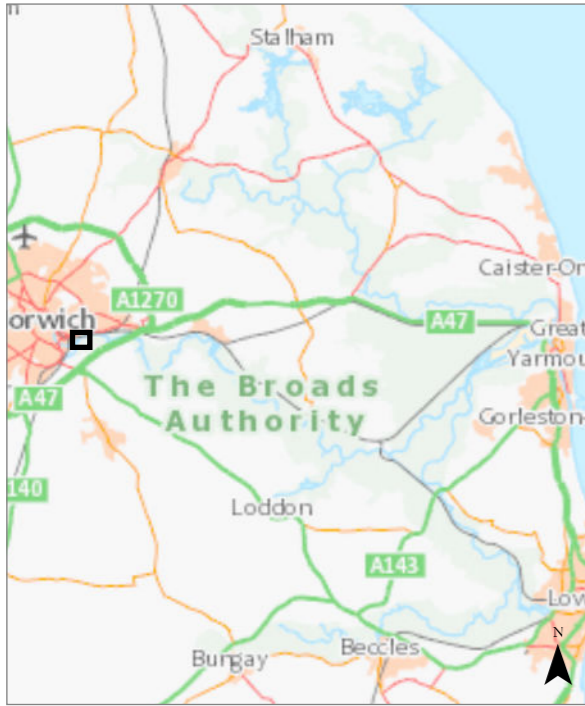
© Crown copyright [and database rights] 2025 OS AC0000814754. You are permitted to use this data solely to enable you to respond to, or interact with, the organisation that provided you with the data. You are not permitted to copy, sub-licence, distribute or sell any of this data to third parties in any form.

0 0.4 Kilometers

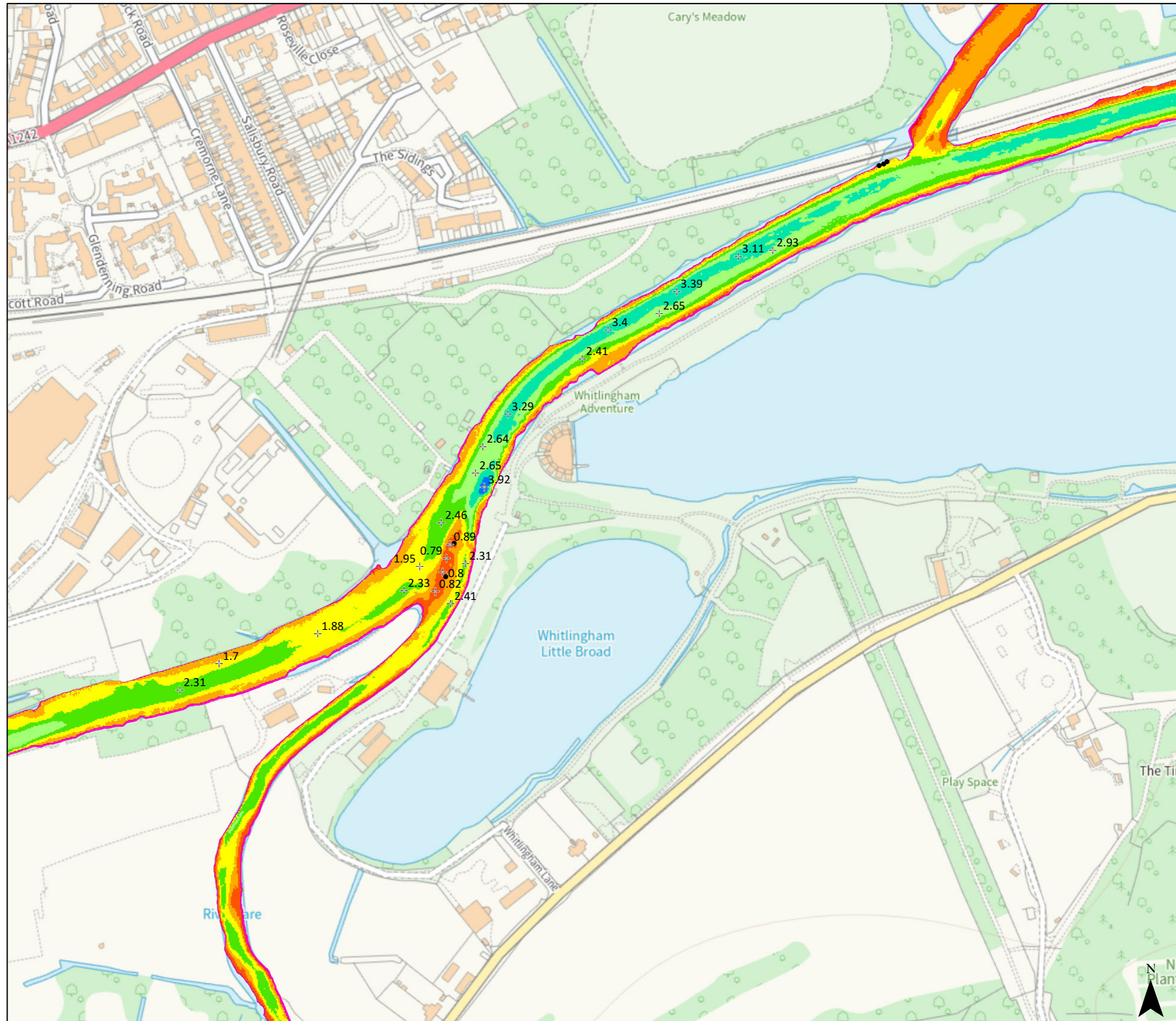


## Trowse Eye (detailed)

The information has been published by the Broads Authority in order to meet its duties as a harbour authority under the Port Marine Safety Code and the requirements of the UK Hydrographic Office. Last surveyed 2022.

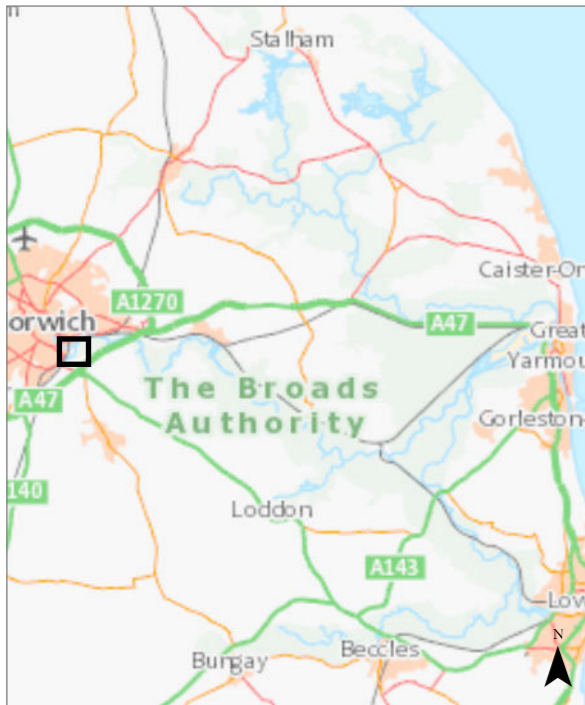


© Crown copyright [and database rights] 2025 OS AC0000814754. You are permitted to use this data solely to enable you to respond to, or interact with, the organisation that provided you with the data. You are not permitted to copy, sub-licence, distribute or sell any of this data to third parties in any form.

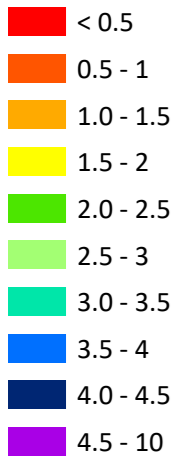


## Yare/Wensum confluence (Trowse Eye)

The information has been published by the Broads Authority in order to meet its duties as a harbour authority under the Port Marine Safety Code and the requirements of the UK Hydrographic Office. Last surveyed winter 2024/25.



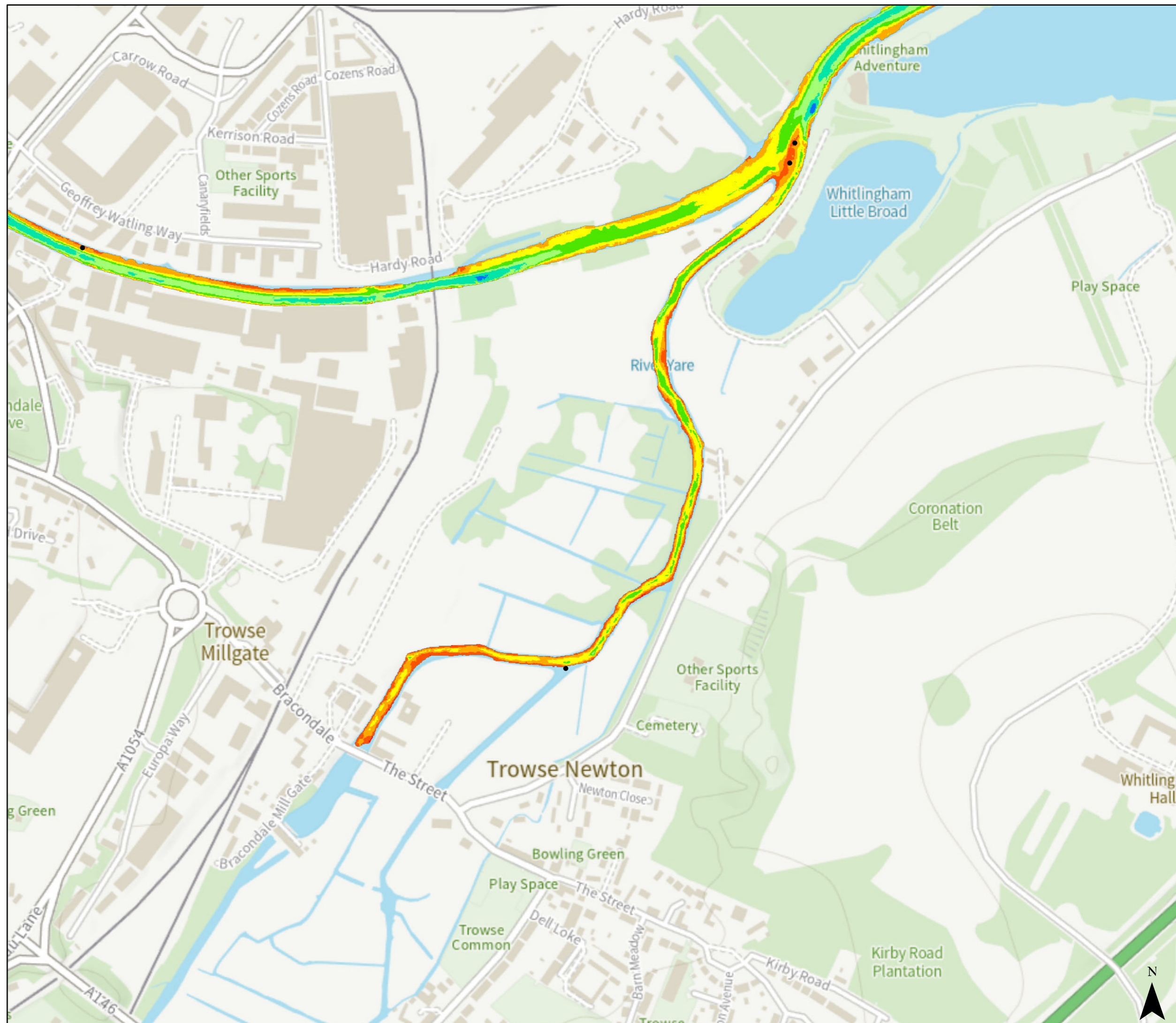
Depth below MLW (m)



• Post

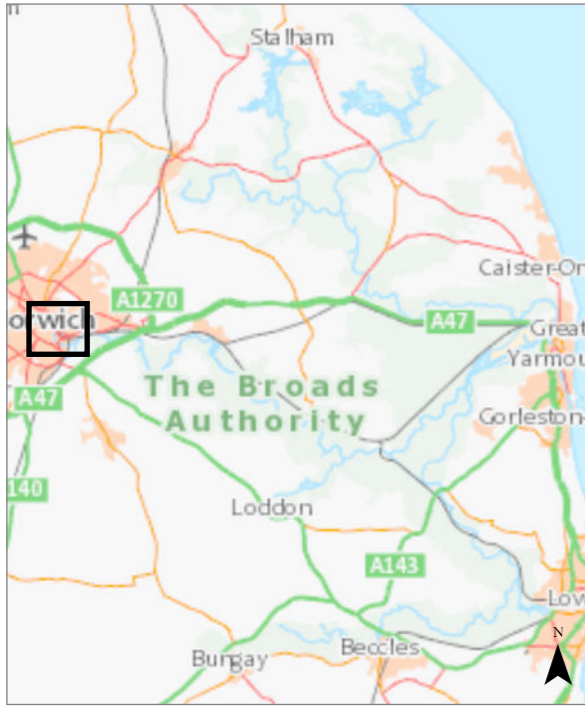
© Crown copyright [and database rights] 2025 OS AC0000814754. You are permitted to use this data solely to enable you to respond to, or interact with, the organisation that provided you with the data. You are not permitted to copy, sub-licence, distribute or sell any of this data to third parties in any form.

0 0.3 Kilometers

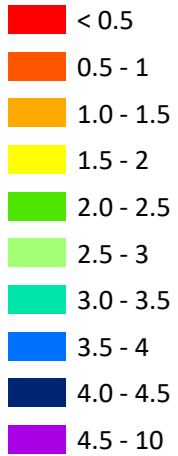


## Yare/Wensum confluence to New Mills Yard (Norwich Reach)

The information has been published by the Broads Authority in order to meet its duties as a harbour authority under the Port Marine Safety Code and the requirements of the UK Hydrographic Office. Last surveyed winter 2024/25.



Depth below MLW (m)



• Post

© Crown copyright [and database rights] 2025 OS AC0000814754. You are permitted to use this data solely to enable you to respond to, or interact with, the organisation that provided you with the data. You are not permitted to copy, sub-licence, distribute or sell any of this data to third parties in any form.

0 0.6 Kilometers

