

Annual Report 2016-17



Broads
Authority

INTRODUCTION

While many projects essential to the fulfilment of our responsibilities take place on an annual basis and contribute to a greater whole, some of our longer-term projects, which frequently take far longer than one financial year to complete, have reached very significant stages during the period principally covered by this report.

Some key strategies for management of the Broads have been developed. First and foremost, the new Broads Plan was adopted in March 2017. It will guide not only the Broads Authority's work for the next five years, but the work of many of our partners as well.

Two other strategies that derive from the Broads Plan have also been published: our Education Strategy and our Volunteer Strategy, again both covering the period 2017-22.

Education in the widest sense is essential for securing

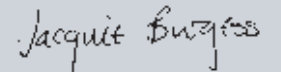
support for our work and that of our partners and through it, the future of the Broads. Education and volunteering go hand in hand, and we simply wouldn't be able to carry out many of our projects and achieve many of our ambitions for the Broads without our volunteers. The new strategy for volunteers will guide us in making best use of this tremendous resource.

The Tolls Working Group has created a framework for another area of our work, for now and for the future. Authority members approved a new charging structure for boat tolls, which is fairer, simpler and more flexible, with, in general, bigger boats paying more and smaller boats paying less.

Our Heritage Lottery Fund project, Water, Mills & Marshes, has made exciting progress and we are now waiting to hear the outcome of the final stage in the funding application process. A funding application was also submitted to allow further development of the Hickling Broad Enhancement Project, which we have now heard has been successful. Both projects are and will continue to be, hugely significant for major areas of the Broads.

You can read more about all of these projects and many others in the following pages, but drawing them all together is a project symbolising the Broads and everything that we do here, and that is the Broads National Park brand. Use of the brand for marketing purposes was endorsed at the end of March 2017, when we were fortunate enough to host a visit to the Southern Broads by the Defra Minister responsible for national parks, Lord Gardiner of Kimble, who unveiled a new sign, to be the first of many, welcoming visitors to the Broads National Park.

We look forward to hearing from you if you would like more details about any of our projects.



Prof Jacquie Burgess
Chairman



Dr John Packman
Chief Executive



Yare House, 62-64 Thorpe Road,
Norwich, Norfolk NR1 1RY
01603 610734

broads@broads-authority.gov.uk
www.broads-authority.gov.uk

Front cover photo:
Norfolk Show by Julian Claxton
see page 4

This report has been designed to be read as a pdf on screen. If you require one of the limited number of printed copies please contact us.

It can be viewed or downloaded at:
[www.broads-authority.gov.uk/
corporate-publications-and-reports](http://www.broads-authority.gov.uk/corporate-publications-and-reports)

| | | | | | |
|---------------------------------------|---|---|----|-----------------------------------|------------|
| Promoting the Broads | 4 | Working with the community | 11 | Broads Authority membership | 16 |
| Showcasing the Broads National Park | | Supporting Broads-related projects | | Broads Authority staff | 17 |
| Valuable volunteers | 7 | Practical works | 12 | Revenue accounts | 19 |
| For the love of the Broads | | Improving the infrastructure on land and water | | Broads information centres..... | back cover |
| Conserving the Broads | 8 | Planning for the future | 14 | | |
| Protecting our waterways and wildlife | | Maintaining the special character of the Broads | | | |

Coot



Promoting the Broads



Show time

After a period of some years, the Broads Authority made a very welcome return to the Royal Norfolk Show in June 2016, enabling us to meet people who perhaps don't know the Broads, and really encourage them to visit and understand what's special about it.

An ambitious Broads Village, a new feature for the show, was coordinated by the Authority, drawing together a diverse range of Broads organisations including those involved in wildlife, boating and the history of the Broads, and the Authority and partners provided a huge

range of activities for the public and especially children to get involved with, as well as goody bags promoting the Broads.

Giant decorative wooden letters spelling out the name 'Broads' welcomed village visitors (see front cover), and there was an innovative Broads breathing space experience – a teepee complete with the relaxing sights and sounds of being out on the water. The show was also a fantastic opportunity to promote other areas of our work, such as Pony Power, a key part of our fen management programme.

A highlight of the activities was the chance for show-goers to step aboard Liana, our Edwardian-style electric boat, on the lake at the showground. Liana offers regular trips from Easter to October along the River Bure from Hoveton. Passengers at the show included the Prince of Wales and the Duchess of Cornwall, who also met many other exhibitors within the village.

Show organisers felt that the Broads Village was a very successful new feature within the Norfolk Show and plans were swiftly put in place for a return in 2017.





Access All Areas

During spring 2016 filming took place for the Access All Areas video, commissioned by the Broads Authority, with excellent presentation by broadcaster and journalist Mik Scarlet.

The video includes visits to Barton Broad Boardwalk, Fairhaven Woodland and Water Garden at South Walsham, the Nancy Oldfield Trust at Neatishead and Broads Tours at Wroxham, with glimpses of other places as well. Mik also visits Whitlingham Country Park and takes a trip on board the Authority's wheelchair-accessible solar boat, Ra.

The video, which is available on YouTube, <http://bit.ly/2k6FHPA>, had

a very successful launch at the Nancy Oldfield Trust's facility on Barton Broad in September and features on the new visitor site: www.VisitTheBroads.co.uk

Mik Scarlet, presenter of the video, very kindly wrote a 'welcome' article for our Broadcaster visitor magazine, published in March 2017, in which he gave the Broads a great accolade: "I think you can tell I've fallen in love with the Broads. The landscape, the wildlife and the activities all have me hooked, but the most impressive thing is how committed everyone I met is to accessibility. If you, a family member or friend are disabled you must visit the Broads. I know I will be back, very soon. In fact as soon as I finished typing this I was booking my return trip."

A new brand for the Broads

Following the consultation with partners on the new brand for the Broads and adoption of the name Broads National Park for marketing purposes, the Broads Authority has sought all appropriate opportunities to use the new name and branding. A key area is introducing its use where relevant within our signing.

At the end of March 2017 we hosted a visit by our national parks minister, Lord Gardiner of Kimble. We arranged a full day, starting at the railway station at Beccles where he unveiled a new Broads National Park sign, welcoming visitors to the Southern Broads. His programme there included meeting our apprentices, and the Mayor of Beccles and other councillors. As a result of the success



Above: Unveiling the new sign at Beccles

Below left: New brand guidelines

of the visit, Greater Anglia is pursuing options for introducing the new Broads branding at other stations within the region.

Lord Gardiner went on to Oulton Broad to hear about the check, clean, dry campaign against invasive species, and met our dredging crew who were finishing the year's work at Haddiscoe Cut. He also met a group of local farmers and took a trip on the Spirit of Breydon to see some of our water management challenges. He then toured a local boatyard, walked around Burgh Castle Roman fort, where he heard about the Water, Mills & Marshes project, and visited the Suffolk Wildlife Trust's Carlton Marshes.

Festival time

The sixth Broads Outdoors Festival was launched on 4 May 2016 at Ranworth Church, known as the cathedral of the Broads. Guests and representatives from partner organisations, including media partner Archant, Richardson's Boating Holidays and Broads Tourism, were present. A climb up the church tower rewards visitors with fantastic views of all that the great outdoors of the Broads has to offer.

The festival, which featured events across the Broads from 7 to 22 May,

was a celebration of the wealth of opportunities for outdoor activity within the Broads National Park, attracting visitors and local people to enjoy activities that they might not otherwise try and to do so out of high season.

Festival participants also had the chance to discover some secret places rarely open to the public, such as the bluebell woodland adjacent to Fairhaven Woodland and Water Garden, and Heigham Holmes Nature Reserve. Many of the drainage mills offered guided tours, there were local food and drink

events, Broads crafts were on display and festival-goers could breakfast with the birds at dawn chorus events.

One aim of the festival is to offer taster sessions out on the water, and canoeing, paddleboarding, sailing, wherry trips and windsurfing all featured.

The festival brochure, with full details of all events, was distributed as a supplement in the Eastern Daily Press newspaper and was also available from local tourist information centres. Full details were also on the festival website, www.outdoorsfestival.co.uk



A new site for the Broads National Park

VisitTheBroads.co.uk

Spring 2017 saw the launch of the new Broads visitor website, which is a joint project for the Broads Authority and Broads Tourism, the membership organisation that brings together a very wide range of businesses and others involved in tourism in the Broads.

The site has replaced the previous joint site, enjoythebroads.com, and provides new content and the opportunity for the Authority to have full control of the functionality of the site, making much

more effective and efficient use of our resources. Editorial content, images and listings are all managed by the Authority, while Broads Tourism members supply details for an enhanced listing for their individual businesses.

The site has already boosted membership of Broads Tourism, which has wider benefits for tourism strategy as a whole within the Broads, and the Authority has now employed a new Communications Officer (Digital and PR), who will develop the site further, together with our social media profile, working closely with Broads Tourism as well as with Authority colleagues.

Valuable volunteers

7

Let's celebrate!

The annual Volunteer Celebration Day took place on 17 September 2016, based around Potter Heigham. The event is an occasion to thank our valuable volunteers for all the assistance that they have given to the Broads Authority in the last year. The event also offers informal learning and training opportunities. Volunteers and staff who work with them regularly could enjoy a talk at the Wind Energy Museum with a stroll along the river to Thurne Mill, the chance to explore on the water aboard boats from Herbert Woods, or time to do some vegetation management.

Volunteers love the Broads

A new, five-year Volunteer Strategy for the Broads Authority was approved in March 2017. The strategy outlines the numerous benefits of volunteering, both for the Authority and, importantly, for the volunteers.

Its four key objectives are to: provide practical training and support to volunteers and supervisory staff in an up-to-date, effective, efficient and fair way; build the capacity of volunteers

to lead tasks and run public events and activities; encourage volunteering from a more diverse range of people, particularly young people and those with disabilities or health-related issues; and increase the Authority's long-term capacity to sustain an active and improving volunteer service.

We use the time and skills offered by volunteers to support our work and achieve our objectives. Working alongside staff, volunteers provide valuable expertise and increased flexibility, and enhance the experience of everyone working for the Authority. In turn, by offering a range of volunteering opportunities, we seek to inform and influence people's life choices and behaviour, and improve their health and well-being, skills and employment opportunities, and overall quality of life.

Volunteer activities include patrolling on the waterways and on land; removing obstructions from the rivers; moving vessels and vessel maintenance; litter picking; assisting with public events; support for environmental education, information centres and yacht stations; fen management; and invasive species control and monitoring.



Volunteer harvesting willow

Love the Broads grants

Love the Broads continues to keep the Broads special thanks to the generosity of nearly 80 participating businesses and their customers. The businesses collect donations from customers to raise money for grants for projects that protect, preserve and enhance the Broads for today and tomorrow. In 2016 grants were awarded to the projects listed below.

Museum of the Broads - Safety equipment on the river frontage of the museum

Carlton & Oulton Marshes - Contribution towards fen harvesting, sponsored by Waveney River Centre's customers

Fen Raft Spiders in the Broads - Establishing new populations of these rare spiders

Broads Authority

- Moorings at Boundary Farm on the River Bure, sponsored by Herbert Woods' customers
- Nesting tower for swifts at Whitlingham Country Park

Love the Broads is administered by the Norfolk and Suffolk Broads Charitable Trust, an independent charity with trustees from local businesses, the Broads Society and the Broads Authority.

More details from www.lovethebroads.org.uk



Swift tower at Whitlingham

Conserving the Broads



Managing the Broads fens

Fen management work is a very large part of the Broads Authority's practical conservation programme. It is also the largest source of regular income, funded primarily through agri-environment scheme payments direct to the Authority or via management agreements with third-party landowners.

The Authority itself holds three Higher Level Stewardship (HLS) schemes, at our How Hill National Nature Reserve and at Horning Marsh Farm. The Authority's grazing land at How Hill, Locks Meadow at Geldeston and Cary's Meadow at Thorpe St Andrew also attracts income. Other management agreements exist for an additional 11 priority biodiversity fen sites owned by a variety of third parties, typically holding their own HLS agreements. The annual work programming, budget

planning and monitoring is carried out by the Environment and Design Team, and Ecologists, with Environment Officers having responsibility for individual sites.

Plant monitoring and mapping in the priority fen and open water broads forms an integral part of the active management work. Monitoring to enhance knowledge and evidence of the success of management actions, or identifying site trends in habitat quality, is carried out as part of the annual work programme.

Currently 238ha of fen habitat are regularly managed by the Broads Authority under management agreements, with additional areas managed on a one-off or contractual basis. In 2016/17 1.2km of dykes were cleared and re-profiled, and 78.23ha of fen were subject to active management work, not including commercial reed cutting.

Flood Management High Level Review

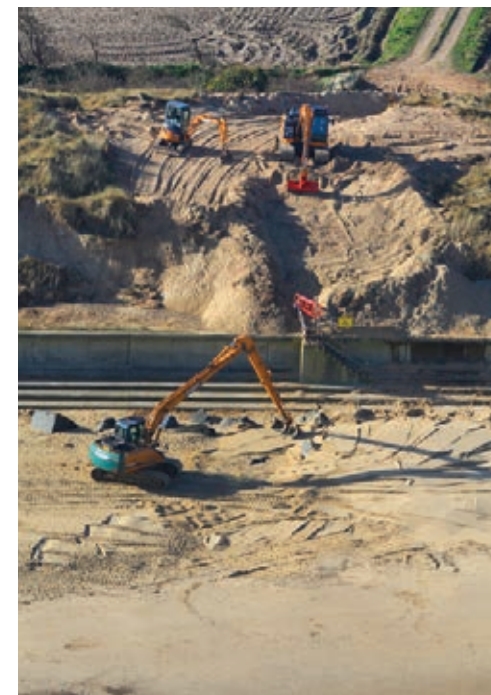
Consultants CH2M produced this report in October 2016 for the Broads Climate Partnership (BCP), which is led by the Broads Authority, working with the Environment Agency, Natural England, the National Farmers' Union, Norfolk County Council, other local authorities and the University of East Anglia.

The consultants studied the three strategies in place to manage flood risk for the Eccles to Winterton coastal frontage, Broadland and Great Yarmouth. The review found that despite the successful implementation of each of these strategies to date, the total costs of continuing them over the next 50 years were likely to be between £200m and £300m at present value, with a projected future estimated value of between £400m and £500m. Under current funding eligibility rules, central government grant aid will not meet all of that cost.

The review concluded that there was a clear need for a single strategic overview for flood risk management in the areas that not only took into

account the two-way relationship between coastal and inland flood risk, but also wider concerns around the use of the areas by residents, visitors and the people who work in them.

Further work and analysis is needed, and the BCP, along with stakeholders and other partners, will be considering the issues and funding before taking forward development of any future strategy.



Flood defence work at Waxham

Anyone for a CANAPE?

During 2016/17 work continued to secure European funding needed to achieve the full vision for the Hickling Broad Enhancement Project, within the Upper Thurne area of the Broads waterways.

An expression of interest was approved and the full funding application was submitted in January 2017. The Broads Authority has since heard that the full application was successful and we are

Right and below: Hickling Broad



now the lead partner responsible for the delivery of a €5m project, involving 14 partners from five European countries, known as CANAPE, or Creating a New Approach to Peatland Ecosystems to give it its full title.



The Hickling Broad Enhancement Project was originally developed with the Upper Thurne Working Group, involving partner organisations and stakeholders including Norfolk Wildlife Trust, Natural England, the Environment Agency, other conservation partners and local landowners.

Following dredging of a channel running through Hickling Broad other parts of the project have progressed, including creating new reed islands and restoring a sensitive and badly eroded reed margin habitat, re-using dredged material and improving habitats using novel geotextiles and engineering techniques. The project has already created a greatly improved aquatic environment with sheltered bays, more reedbed areas, better water quality, more water plants and higher numbers of water birds.

The application for new funding included developing additional parts of the project, to explore the potential for re-use of fen materials for composting or biofuels, which would assist the Authority in its fen management and create carbon benefits.

Water, Mills & Marshes

In October 2015 the Heritage Lottery Fund (HLF) awarded £2.6m to the Water, Mills & Marshes partnership scheme. Development funding of £226,000 was released, and the Broads Authority is extremely grateful for the overwhelming support from partners, stakeholders and communities.

Water, Mills & Marshes will save precious drained marsh landscape and mills, conserve threatened habitat and species, and reconnect people with the environment. The scheme aims to enrich and promote heritage sites in the area between Norwich, Great Yarmouth, Lowestoft, Acle and Loddon, and enable those who wish, to gain the skills to protect it for future generations.

The development phase progressed well. A review of the Landscape Character Assessment was undertaken, and a Landscape Conservation Action Plan was produced, which describes the scheme in detail. Additional funding and access agreements with landowners were secured. Drainage mills that will receive structural work were laser surveyed, specifications and schedules of works



were compiled, and planning applications prepared. Consultants created strategies for improved access; learning, interpretation and audience development; and heritage skills training.

Twelve projects received development phase funding for research and engagement activity trials. The work significantly expanded the data available, and improved the methodology and potential output of these projects. Engagement activities generated great interest and enthusiasm, and the partnership developed.

One exciting project was the building of the Chet boat, a replica of a medieval

wooden boat discovered in the River Chet in 2013 (*see above left*). Students from the International Boatbuilding Training College (IBTC) at Lowestoft carried out the work. Subsequently, the boat featured with fen plants in the artisan garden designed by Gary Breeze and sponsored by the IBTC, which won a gold medal at London's Chelsea Flower Show in May 2017 (*see above*).

Other projects so far include a dawn chorus soundscape of Halvergate Marshes, an oral history project, and creation and production by Eastern Angles Theatre Company of Breydon Crowther, a play exploring life on the marshes in the late 1800s.

The second-round application was completed in March 2017 and submitted in May. A successful application will release the remaining £2.4m grant for projects. A decision on the application is due in autumn 2017.

Fifty-five organisations will be involved in 41 projects during the full delivery phase. The complete scheme will be worth a total of £4.5m including match funding, and aims to enable everyone, of any age, from any area, to understand, benefit from and enjoy the special Broads landscape. Through capturing stories from older generations and training younger people, the project will ensure that the full history

of the area, as well as the landscape itself, is there to be enjoyed in the future.

There are opportunities to get involved through public consultation, stakeholder workshops and running projects. For details, please contact the Programme Manager, Will Burchnall, at the Broads Authority, or follow these links:

www.broads-authority.gov.uk/looking-after/projects/water,-mills-and-marshes

www.facebook.com/WaterMillsandMarshes

www.twitter.com/Broads_LPS

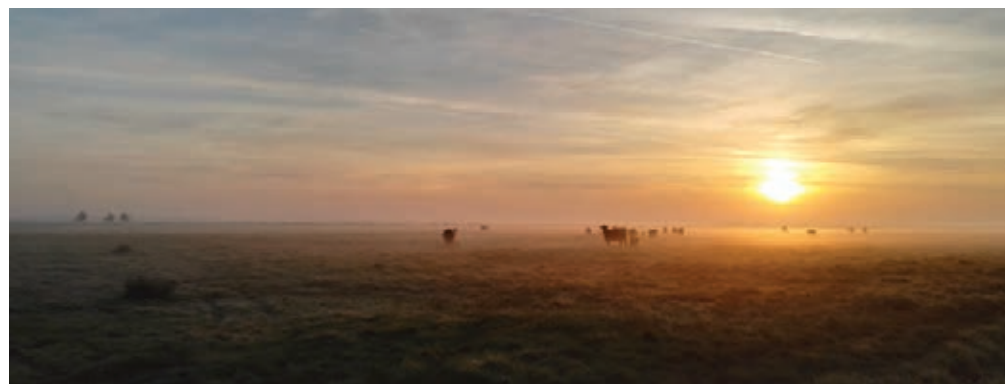
www.youtube.com/watch?v=SNmpuHE5-kg



Supported by
The National Lottery
through the Heri

I Lottery®

**heri
lottery**



Working with the community

11

A Broads education

A new five-year Education Strategy for the Broads Authority was approved in March 2017. It includes the long-term aim that everyone, particularly young people, disadvantaged people and people with disabilities, should have opportunities to connect with the Broads for recreation, learning, and physical and mental health and well-being.

The focus is on outreach opportunities, including events, volunteering, training and schemes such as Forest Schools, as well as formal education.

The Broads Environmental Education Network is a key partner in the strategy, with over 30 organisations involved, including wildlife and other voluntary organisations, boating businesses and others involved in tourism, Norfolk County Council, English Heritage and Natural England.



Fun in the Broads



The Broads Authority publicises and participates in many local events as part of its duty to promote opportunities for understanding and enjoyment of the special qualities of the Broads by the public. Events are publicised in our Broadcaster visitor magazine and on www.VisitTheBroads.co.uk

Go Wild at Barton Turf takes place each May, run by the Barton Turf Adventure Centre in conjunction with the Authority. Visitors enjoy walks, boat trips, crafts, pond dipping, minibeast hunting and worm charming.

In the Southern Broads, Fair on the Yare is organised by local people each June

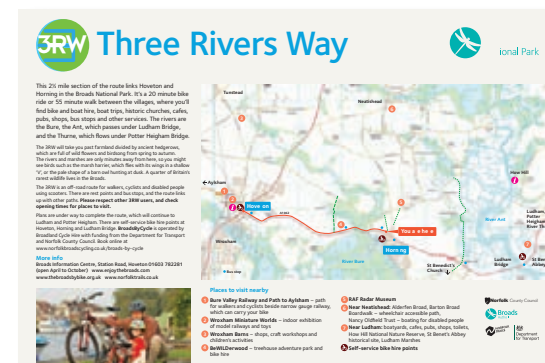
at Claxton Manor. Countryside and conservation activities are a key part of the fair, with Authority staff participating. Staff from the farm at Claxton make an important contribution to school visits, working with our Education Officer.

Picnic in the Park is organised by the Education Officer for National Parks Week, taking place annually in July. The aim is to encourage people to make the most of their national parks. The Authority's 2016 event took place at Whitlingham Country Park, with stands from charities, businesses and other organisations.

Three Rivers Way

The first part of the Three Rivers Way (3RW), an off-road route for walkers, cyclists and people using wheelchairs or mobility scooters, opened in July 2016. This part of the path goes from Hoveton to Horning, following the A1062. The project includes self-service bike hire points, with online or telephone booking, at Hoveton (next to the Broads Authority's information centre), Horning and Ludham Bridge.

The Three Rivers Way Association initiated and leads the project, working with Norfolk County Council and the Authority. The path was partly funded through the Department for Transport's scheme for national parks. There are plans for links to Ludham and Potter Heigham.



New and refurbished moorings

Major re-piling of the Cockshoot mooring started in January 2017, ready to be open by the start of the new season. From the mooring visitors can also gain access to the boardwalk leading to Cockshoot Broad.

A lease was agreed on Rockland Short Dyke for a new, 120-metre stretch of moorings and building work has since begun. The mooring will improve

boating facilities on the River Yare and provide direct access to the Wherryman's Way long-distance walking route between Norwich and Great Yarmouth.

The Broads Authority also took on management of the mooring at Pye's Mill near Loddon, a key site in the Southern Broads, while a new emergency mooring was installed at Scare Gap, on the River Bure towards Great Yarmouth.



Work in progress at Rockland and...



...at Cockshoot

Good progress with dredging

The Broads Authority has made good progress again this year with dredging, mainly on the rivers Bure, Yare and Waveney, and at Hickling Broad. The complex planning for dredging projects in a protected landscape calls for environmental benefits to be built into projects. The restoration of two reed swamp areas using sediment dredged from the channel in Hickling Broad is this year's example of best practice.

Dredging to improve the navigable depths in areas critical for waterways users is a key part of the 2007 Sediment Management Strategy. The strategy provided a good basis for a structured approach to dredging, particularly by providing waterways specifications, methods of assessing compliance with these and a means of prioritising work. The Authority has since refined and adapted its approach in response to land use changes, experience and improved modelling of hydrographic data.

Delivery of the programme also depends on availability of suitable equipment and land. Variations to plans often occur, as this year. Dredging of Limekiln

Dyke from Gaye's Staithe to Neatishead Staithe was deferred until winter 2017/18, as essential equipment could not be replaced until after April 2017. Work on the Bure Loop could not progress as planned due to the requirements of the agricultural support payments to landowners, which limit the length of time that sediment can be stored on flood banks. An alternative area and methodology for dredging at Stokesby was identified, with sediment re-used in raising flood banks.

The Authority is steadily tackling some of the most difficult areas to manage and we were able to remove 42,960m³ of sediment from priority areas in 2016/17.





Celebrating the opening of a new path

Monastic meanderings

Broads visitors can follow in the footsteps of medieval monks with the opening of a footpath along the River Ant. The path completes the link from the Broads Authority's How Hill National Nature Reserve to the Norfolk Archaeological Trust's St Benet's Abbey, via Ludham Bridge. There are existing moorings at all three sites for waterborne visitors.

The Authority negotiated with land-owners to gain access for the path, allowing visitors to experience the wonderful landscape, wildlife and cultural heritage here, and especially the abbey.

The path was identified as a key link in our Integrated Access Strategy. The strategy aims to open links for public access, particularly between land and water, enabling visitors to reach village facilities such as those at Ludham easily, from moorings and other popular destinations.



New charging structure for boat tolls

The biggest change in boat tolls for more than three decades was adopted by Broads Authority members in November 2016, when they approved a new charging structure.

The new system is fairer, simpler and more flexible, with, in general, bigger boats paying more and smaller boats paying less. The Authority appreciates that the increases necessary for bigger boats to shift to the new structure in the first year may have

been unwelcome, but hopes that the rationale for the system is clear. Even after the annual tolls rise of 3% for 2017/18, the changes meant that 44% of boaters were due to pay less than in 2016/17. We hope that the new system will boost entry level boating.

The hire boat multiplier has also been abandoned in favour of different charges per square metre for each vessel classification within each fleet. This will allow greater flexibility, to respond to changes. Hire boats will continue to pay significantly higher rates than the equivalent sized private boats.

The changes followed a year of analysis by the Tolls Working Group, made up of seven Authority members, five of whom were also Navigation Committee members, and toll payers representing commercial and private boating. The review was based on comprehensive independent research, as well as views expressed at a workshop in 2015 with stakeholders from the British Marine Federation, the Broads Hire Boat Federation, and the Norfolk and Suffolk Boating Association. Representatives from these organisations were also involved at other key points.

Go electric

Over many years the Broads Authority has encouraged more environmentally-friendly forms of propulsion with reduced charges for electrically powered motor craft and a network of charging points.

During last winter new meters were installed at all the points, at 20 locations, to bring them up to date with new legal requirements, with a system for the use of contactless cards. The work was followed by rigorous testing, before the points were opened to the public for the main boating season.

The new cards are available from local outlets, price £1 as before. Details and instructions are available from our yacht stations and information centres, or www.broads-authority.gov.uk



Planning for the future

New plans for the Broads

The Broads Plan is the key management plan for the Broads. The plan, last published in 2011, has been reviewed and updated through an 18-month process that included two stages of public consultation in spring and autumn 2016. The new Broads Plan, covering the period 2017-22, was adopted by the Broads Authority in March 2017.

The plan sets out a long-term vision for the Broads and guiding partnership actions to benefit the environment, communities and visitors. Management themes include landscape and cultural heritage, water resources and flood risk, navigation, biodiversity and agriculture, promoting understanding, recreation, climate-smart communities, and

connecting and inspiring people. While the Authority is responsible for its production, the success of the plan depends very much on the shared vision and commitment of the many organisations, interest groups and community groups involved in its development and implementation.

As the local planning authority, the Broads Authority must also prepare a Broads Local Plan, which sets spatial planning policies for the Broads executive area. The Authority consulted on its Broads Local Plan: Preferred Options between December 2016 and February 2017. The local plan is expected to be adopted in 2018. The Authority's Flood Risk Supplementary Planning Document was adopted in March 2017.



Good neighbours

Neighbourhood planning powers give people a say in how their local area should develop. This planning legislation was introduced in 2012 through the Localism Act.

A neighbourhood development plan can establish general planning policies for the development and use of land in a neighbourhood, such as where new homes and offices should be built and what they should look like. It also gives communities the power to make a neighbourhood development order and make a community right to build order.

Broads parish or town councils that are developing neighbourhood plans need to apply to the Broads Authority and the relevant district council to designate the neighbourhood area that their proposed plan will cover. Several councils within the Broads are developing neighbourhood plans,

Launch of the Broads Plan, left to right: Laura Drysdale, Director, the Restoration Trust; Caroline Davison, Director, the Norfolk Archaeological Trust; Michael Strand, Development Manager, Suffolk Wildlife Trust; Professor Jacqui Burgess, Chairman, the Broads Authority; and Dr John Packman, Chief Executive, the Broads Authority



Above: Riverside at Brundall

consulting on them or have had neighbourhood plans approved and adopted.

The neighbourhood plan for Brundall was adopted in May 2016, and the following neighbourhood plans have been in preparation during the period of this report: Beccles; Bungay; Horstead with Stanninghall; Lound with Ashby, Herringfleet and Somerleyton; Oulton; Rollesby; Salhouse; Thorpe St Andrew; Worlingham; and Wroxham.

Keeping the Broads special

In order to keep the Broads landscape special, in line with the Broads Authority's legal duty to conserve and enhance the natural beauty, wildlife and cultural heritage of the Broads, and to uphold planning legislation, it is sometimes necessary for the Authority to take planning enforcement action.



Three major and lengthy enforcement cases have reached a conclusion over the period of this report: Jenner's Basin at Thorpe Island, the Ferry Inn at Horning and Wayford Mill near Stalham.

The case at Jenner's Basin, part of Thorpe Island, on the River Yare just outside Norwich, reached a final conclusion in June 2016, when the Broads Authority was awarded a permanent injunction by the High Court, with the judge complimenting the Authority on its conduct. The owner had been developing the site without planning permission for five years and renting out moorings. Following the granting of the injunction, he had the option to submit an acceptable planning application, but this was not forthcoming and the property has since been sold.

In the case of the Ferry Inn at Horning, Authority members noted that the business provided an important service to the local community and visitors, but there had been concerns about possible unauthorised development going back to 2012, so enforcement action was agreed. However, negotiations continued, the site was inspected at the

end of March 2017 and all unauthorised structures had been removed.

Finally, a breach of planning regulations at Wayford Mill near Stalham, originally dating back to 2011, involving works to the mill and sub-division of property to create two units of holiday accommodation, was also resolved satisfactorily.

A new old look

Toad Hole Cottage is a tiny, late 18th or early 19th-century cottage, which serves as the Broads Authority's information centre at our How Hill National Nature Reserve, giving visitors a glimpse of life on the marshes in Victorian times.

In spring 2017 it was rethatched. Local materials were used, and the processes and tools used were nearly all traditional. The work was done by two local thatchers and an apprentice over four-and-a-half to five days, using about 380 bundles of reed and about 120 bundles of sedge. The patterning was done with local hazel.

Above: Jenner's Basin

Right: Thatching Toad Hole Cottage at How Hill

Toad Hole was probably last rethatched in the late 1940s or 50s, when it belonged to the Boardman family, with repairs probably done in the 1990s and a new ridge in 2005. The reed part of a roof lasts 60-70 years, while the ridge, made of sedge, lasts about 15 years.

The reed for this project was cut at West Somerton, and Martham North and South Broads, supplied by the Broads Reed and Sedge Cutters Association, with whom the Authority has worked closely to revitalise the industry.

We encourage the use of thatch as a roofing material. It's sustainable, reed and sedge cutting are part of managing the marshes, and thatch is practical as well as picturesque – warm in winter and cool in summer.

The materials for the cottage roof come from the landscape around us, so it's not surprising that it and others like it blend in so well. A video of the rethatching project is available on our website: www.broads-authority.gov.uk/about-the-broads/heritage-and-culture/thatching



The Broads Authority has a membership of 21. Nine members are appointed by the two county councils and six district councils whose boundaries fall within the Authority's executive area, and 10 members by the Secretary of State. Two members are co-opted from the appointed members of the Navigation Committee.

The July 2017 membership is set out to the right.

There are six meetings every year of the full Authority, supported by four-weekly meetings of the Planning Committee, six meetings of the Navigation Committee, three meetings of the Financial Scrutiny and Audit Committee, four meetings of the Broads Forum and four meetings of the Broads Local Access Forum.

The full Authority is the executive body for decision taking and overseeing all strategic issues. The Planning Committee exercises many of the Authority's powers and duties in relation to planning. The statutory Navigation Committee is a consultative body on navigation issues, while the Financial Scrutiny and Audit Committee scrutinises the Authority's accounts and ensures that financial planning risk is managed effectively. The Broads Forum is a consultative body with membership being made up from key stakeholder groups.

The Local Access Forum is a semi-independent body, established under the Countryside and Rights of Way Act, to advise on the improvement of public access to land within the Authority's executive area.

All meetings are open to the public and details of the dates and venues of meetings are available from the Authority's committee staff and on the Authority's website.

The Authority has a public question time scheme for all of its committees, in which members of the public are invited to submit written questions, statements or petitions to the Authority, and to attend the meeting to present these in person.

The Authority has a complaints procedure which was developed in accordance with advice from the Local Government Ombudsman and the Audit Commission. The procedure is intended to be free from unnecessary bureaucracy and easy to understand, while providing effective remedies. The procedure is aimed at cases where the complainant is not satisfied with an initial explanation and wishes to pursue the matter further. Details are available from the Authority's offices and on the Authority's website.

Norfolk County Council

Mr B Iles (from 16 September)
Mr J Timewell

Suffolk County Council

Mr G McGregor (until 23 June)
Mrs M Vigo di Gallidoro (from 23 June)

Broadland District Council

Mrs L Hemsall

Great Yarmouth Borough Council

Mr H Thirtle

North Norfolk District Council

Mr P Rice

City of Norwich

Ms G Harris

South Norfolk Council

Mr V Thomson

Waveney District Council

Mr M Barnard

Secretary of State for the Environment

Mr K Allen
Mr J Ash
Mr L Baugh
Mr M Bradbury
Prof J Burgess
Mr W Dickson
Sir Peter Dixon
Ms S Mukherjee
Mr G Munford
Mr P Warner (until 31 March)
Vacancy - to be confirmed

Co-opted from Navigation Committee

Mrs N Talbot
Mr M Whitaker (until 19 May)
Mr B Wilkins (from 19 May)

Appointed Members of the Navigation Committee

Mrs L Aspland
Mr A Goodchild
Mr M Heron
Mr J Knight
Mr S Sparrow (from 1 April)
Mrs N Talbot
Mr M Whitaker
Mr B Wilkins

**Chief Executive
and Governance**

John Packman
Chief Executive

Emma Krelle
Chief Financial Officer

Shirmila Venn
Financial Accountant

Susan Buller
Senior Finance Assistant

Robert Cleland
Finance Assistant

Maxine Nicholas
Finance Assistant

Simone Steel
Finance Assistant (Insurance)

Lynda Yeo
Finance Assistant (Treasury)

Angie Leeper
Asset Officer

Kathy Browne
Asset Administrative Assistant

David Harris
Solicitor and Monitoring Officer

Sandra Beckett
Administrative Officer

Esmeralda Guds
Administrative Officer

Sarah Mullarney
Administrative Officer

**Planning and Resources
Directorate**

Andrea Long
Director of Planning and Resources

Cally Smith
Head of Planning

Nigel Catherall
Planning Officer

Alison Cornish
Planning Officer

Maria Hammond
Planning Officer

George Papworth
Planning Assistant

Tony Risebrow
Planning Officer (Compliance
and Implementation) /
Hire Boat Licensing Officer

Kayleigh Wood
Planning Officer (Compliance
and Implementation)

Natalie Beal
Planning Policy Officer

Asa Coulstock
Planning Technical Support Officer

Jo Eames
Administrative Officer

Jackie Dent
Historical Files Scanning Assistant

Simon Hooton
Head of Strategy and Projects

Ben Hogg
Historic Environment Manager

Maria Conti
Strategy and Projects Officer

Will Burchnell
Broads Landscape Partnership
Programme Manager

Adrian Clarke
Senior Waterways
and Recreation Officer

Mark King
Waterways and Recreation Officer

Andrea Kelly
Senior Ecologist

Erica Murray
Ecologist

Neil Punchard
Broadland Catchment
Partnership Officer

Beth Williams
Volunteer Coordinator

Abi Charter
Administrative Officer

Lottie Carlton
Administrative Officer

Anna Lynch
Administrative Officer

Lucy Pointer
Head of Human Resources

Vacancy
HR and Payroll Coordinator

Julie Spinks
HR Assistant

Rob Leigh
Head of Communications

Karen Sayer
Design and Information Supervisor

Tom Barrett
Communications Officer
(Graphic Design)

Jess Tunstall
Communications Officer
(Information)

Demelza Craven
Communications Officer
(Media and PR)

Tom Waterfall
Communications Officer
(Digital and PR)

Nick Sanderson
Education Officer

Sam Bates
Visitor Services Supervisor

Angela Garner
Receptionist

Robert Organ
Receptionist

Julie Spinks
Receptionist

Maureen Bird
Information Assistant

Dawn Coleman
Information Assistant

John Davies
Information Assistant

David Frost
Information Assistant

Ron Harrison
Information Assistant

Brian Jarvis
Information Assistant

Robin Jeffries
Information Assistant

Nicky Jones
Information Assistant

Mark Mobbs
Information Assistant

Max Phillips
Information Assistant

Bren Russell-Wells
Information Assistant

Mike Spire
Information Assistant

Mark Wilson
Information Assistant

Dave Abbott
Quay Assistant

Nathan Betts
Quay Assistant

Gary Cotton
Quay Assistant

Rob Ford
Quay Assistant

Dean Harrington
Quay Assistant

Christon Iliffe
Quay Assistant

David Jones
Quay Assistant

Billy Lund
Quay Assistant

Duncan Moore
Quay Assistant

Dave Paddick
Quay Assistant

Bill Housden
Head of ICT /
Collector of Tolls

Steve Linford
IT Project Officer

Jon Rudd
Senior IT Support Officer

Ian Brown
IT Support Officer

Vicky Short
GIS Support Officer

Robert Organ
IT Support Technician

Joel Rushton
Assistant Collector of Tolls

Theresa Smith
Tolls Assistant

Joseph Baker
Seasonal Tolls Assistant

Tom Carter
Seasonal Tolls Assistant

continued on next page

Operations Directorate

Rob Rogers

Director of Operations

Dan Hoare

Head of Construction,
Maintenance and Environment

Timmy Lamb

Construction Supervisor

Mark Bell

Senior Operations Technician

Ricky Cates

Senior Operations Technician

Tony Ellero

Senior Operations Technician

Dougie Martin

Senior Operations Technician

Richard Smith

Senior Operations Technician

Wayne Collins

Operations Technician

Steve Green

Operations Technician

Michael Long

Operations Technician

Eddie Nichols

Operations Technician

Kevin Roll

Operations Technician

Adam Thompson

Operations Technician

Ian Walker

Operations Technician

Matt Dane

Maintenance Supervisor

Simon Bunting

Senior Operations Technician

Dave Goodhand

Senior Operations Technician

Phil Heath

Senior Operations Technician

Mark Rudrum

Senior Operations Technician

Ady Stevens

Senior Operations Technician

James Watts

Senior Operations Technician

Malcolm Farrow

Operations Technician

Glen Owen

Operations Technician

Keith Perry

Operations Technician

Wyn Purdy

Operations Technician

Shaun Taylor

Operations Technician

Robert Clarke

Plant and Equipment Supervisor

Shaun Holmes

Senior Operations Fitter

Ian Brigham

Operations Fitter

Kevin Wells

Operations Fitter

Chris Glasel

Operations Fitter (Small Tools
and Equipment)

Vacancy

Environment and
Design Supervisor

Tom Hunter

Rivers Engineer

Sue Stephenson

Senior Environment Officer

Jonathan Cook

Environment Officer

Gavin Devaney

Environment Officer

Emma Harris

Environment Officer

Hannah Southon

Environment Officer

Lucy Burchnall

Head of Ranger Services

Andy Ellson

Senior Ranger

Graeme Hewitt

Senior Ranger

Robin Allard

Ranger

Andy Bartlett

Ranger

Howard Constantine

Ranger

Andy Cullum

Ranger

Colin Hart

Ranger

Dave Hemnall

Ranger

Adam Hick

Ranger

Edgar Hoddy

Ranger

Chris Morphew

Ranger

Steve Wright

Ranger

Theo Blossom

Ranger - Summer Seasonal

Stephen Fairbrass

Ranger - Summer Seasonal

John Gibson

Ranger - Summer Seasonal

Keith Griffin

Ranger - Summer Seasonal

Jon Hopes

Ranger - Summer Seasonal

Polly King

Ranger - Summer Seasonal

Matt Larkman

Ranger - Summer Seasonal

John Ragan

Ranger - Summer Seasonal

Clive Rushworth

Ranger - Summer Seasonal

Jon Hopes

Ranger - Winter Weekend Seasonal

Dave Paddick

Ranger - Winter Weekend Seasonal

Maxine Willoughby

Broads Control Officer

Nigel Pulham

Broads Control Officer - Seasonal

Steve Birtles

Head of Safety Management

Kathy Browne

Administrative Officer

Laura Milner

Administrative Officer

REVENUE ACCOUNTS FOR THE YEAR ENDED 31 MARCH 2017

A summary of the Broads Authority's consolidated income and expenditure for 2016/17 is set out below.

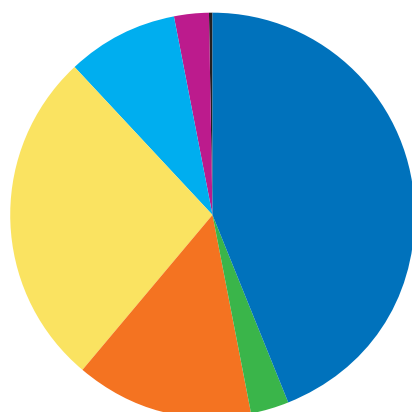
National Park Grant is awarded to the Authority in recognition of the Authority's status equivalent to that of a national park. It is spent on matters relating to conservation, planning, recreation, and information and design. The level of National Park Grant has slightly increased from that received in 2015/16 following a four-year settlement from Defra. The four-year settlement sees a protection in real terms until 2019/20.

Navigation activity is self-financing from tolls paid by users of the Broads waterways.

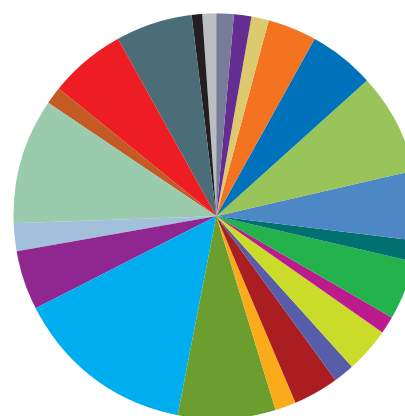
Although the Broads Authority Act 2009 removed the statutory requirement to maintain separate general

and navigation revenue accounts, there is still a requirement to prepare a report at the end of each financial year describing the navigation income received by the Authority and the navigation expenditure incurred during the year. A copy of this report is available on the Authority's website.

The Authority is required to prepare a full and detailed Statement of Accounts in accordance with guidelines issued by the Chartered Institute of Public Finance and Accountancy (CIPFA). These accounts are scrutinised by the Authority's External Auditors and are made available for public inspection. A copy can be viewed on the Authority's website or can be obtained from the Chief Financial Officer, Broads Authority, Yare House, 62-64 Thorpe Road, Norwich NR1 1RY.



| Income | £'000 |
|---|----------------|
| ● National Park Grant (Defra) | 3,243.8 |
| ● Heritage Lottery Fund Grant (Landscape Partnership Development phase) | 210.5 |
| ● Tolls from hire craft | 1,053.8 |
| ● Tolls from private craft | 1,977.0 |
| ● Other national park income | 645.1 |
| ● Other navigation income | 204.5 |
| ● Interest | 14.8 |
| TOTAL | 7,349.4 |
| Contribution from reserves | 2.4 |



Expenditure

| | £'000 |
|---|----------------|
| ● Asset management | 117.4 |
| ● Biodiversity strategy | 91.1 |
| ● Collection of tolls | 114.4 |
| ● Communications (including education, events, design, interpretation and information) | 275.4 |
| ● Development management | 385.3 |
| ● Dredging | 601.0 |
| ● Equipment, vehicles and vessels | 414.7 |
| ● Fen and tree management | 105.5 |
| ● Finance (including insurance) | 348.9 |
| ● Governance | 118.9 |
| ● Heritage Lottery Fund Grant (Landscape Partnership Development phase) | 260.5 |
| ● Human resources | 122.0 |
| ● ICT | 259.7 |
| ● Legal services | 123.4 |
| ● Management and other costs | 580.1 |
| ● Practical maintenance | 1,053.0 |
| ● Premises and property management | 356.2 |
| ● Projects | 145.6 |
| ● Ranger services | 737.2 |
| ● Safety | 116.5 |
| ● Strategy (including strategy and projects, policy, Broads Plan, cultural heritage and climate change) | 441.1 |
| ● Visitor services (including boat trips and yacht stations) | 441.3 |
| ● Volunteers | 65.4 |
| ● Waterways strategy | 77.1 |
| TOTAL | 7,351.9 |

Broads information centres

Hoveton/Wroxham

Station Road
tel 01603 756097
email hovetontic@broads-authority.gov.uk

How Hill

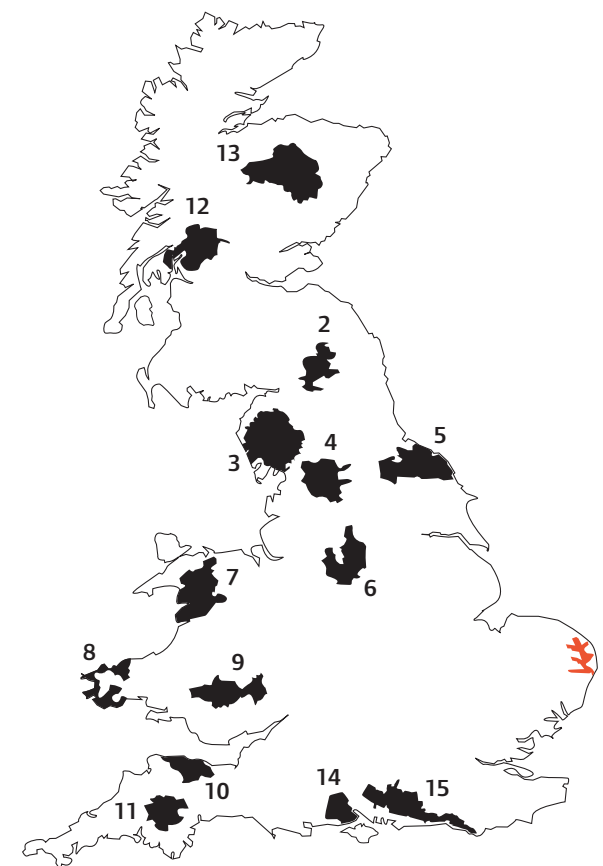
Ludham
tel 01603 756096
email toadholetic@broads-authority.gov.uk

Whitlingham Visitor Centre

Whitlingham Lane
Trowse
Norwich
tel 01603 756094
email whitlinghamtic@broads-authority.gov.uk

For a large print copy
please telephone
01603 610734

Text: Jess Tunstall
Design: Karen Sayer
Photos: Tom Barrett, James Bass, Will Burchnell,
Julian Claxton, Matt Dane, Eastern Daily Press,
Simon Finlay, Ben Hogg, Tom Hunter,
International Boatbuilding Training College, Mike Page,
Andrew Parkinson/2020Vision, Bill Smith,
Heather Wallis Archaeology
Print: Healeys, Ipswich



UK National Park family

- | | |
|-----------------------|----------------------------------|
| 1 The Broads | 9 Brecon Beacons |
| 2 Northumberland | 10 Exmoor |
| 3 Lake District | 11 Dartmoor |
| 4 Yorkshire Dales | 12 Loch Lomond and The Trossachs |
| 5 North York Moors | 13 Cairngorms |
| 6 Peak District | 14 New Forest |
| 7 Snowdonia | 15 South Downs |
| 8 Pembrokeshire Coast | |