

**Duty to Cooperate:  
Norfolk Strategic Planning Framework (NSPF) update**  
Report by Planning Policy Officer

<b>Summary:</b>	The Norfolk Strategic Planning Framework has now been endorsed by all Local Planning Authorities in Norfolk. The document needs to be kept up to date and a review has started with the aim of updating the NSPF and turning it into a Statement of Common Ground as this is required in the emerging NPPF.
<b>Recommendation:</b>	To note the report and endorse the work that is planned to review the NSPF and turn it into a Statement of Common Ground.

**1. Norfolk Strategic Planning Framework**

- 1.1. The Norfolk Strategic Planning Framework (NSPF) is a document that has been produced by all the Local Planning Authorities (LPAs) in Norfolk, together with the involvement of relevant bodies such as the Environment Agency. The NSPF sets out guidelines for strategic planning matters across the County, and beyond, and demonstrates how the LPAs will work together under the Duty to Co-operate through a series of agreements on planning related topics. The Framework has been put together by officers from the Norfolk LPAs, under the oversight of a member level group comprising representatives from all the authorities.
- 1.2. Although the Framework is not a statutory planning document, as it has not been through the full process required to achieve such status, it sets out the strategic matters to be taken account of in the production of Local Plans by the constituent Norfolk LPAs. It was subject to a public consultation between 1st August and 22nd September 2017.
- 1.3. The Framework sets out a proposed Spatial Vision and shared objectives for the Norfolk LPAs, having regard to the main spatial planning issues of population growth, housing, economy, infrastructure and environment. There are a number of “agreements” which explain how the LPAs will seek to deal with the matters through their spatial planning role. The Framework is a guide for future planning work and has been endorsed by all Local Planning Authorities in Norfolk. It was endorsed by the Broads Authority at its meeting in March 2018. The NSPF is being used in examinations of Local Plans.

**2. Further work**

- 2.1 The future work programme is focused on the update of the NSPF and

developing this into a Statement of Common Ground.

2.2 In addition to the work programme, the strategic function will continue to:

- Support and report to the Norfolk Strategic Planning Member Forum and NSPG
- Support Neighbour engagement /cross boundary meetings
- Improve Utilities and Health engagement and meetings
- Support engagement in countrywide Strategic Planning Review of the NSPF

2.3 The revised NPPF introduces the requirement for authorities to produce Statements of Common Ground (SCG) over an area which is deemed the most appropriate functional area. It is proposed that the NSPF is developed into an SCG covering the whole of Norfolk.

2.4 The currently endorsed NSPF needs to be reviewed in light of the new NPPF and to complete commitments set out in the document. These include:

- Review of agreements in the NSPF to ensure they fit the government guidelines on the SCG requirements;
- Review the impacts of the new housing methodology on the housing section and the ability of each authority to meet its own housing needs;
- Review of the section on delivery issues and proposed actions to take forward jointly;
- Production of shared guidance on the location of base and booster stations for the 5G network;
- Production of Transport agreement to be included in revised NSPF;
- Production of a Green Infrastructure (GI) Strategy for Norfolk and review of GI section within the NSPF; and
- Review Tier one Employment sites and update to the employment section in light of the new East of England Forecast Model run.

2.5 A general review to update information and improve areas where time was limited will also be completed. This will include the following:

- Update to the utilities section following further improved engagement with UK Power Networks and Anglian Water;
- Update to the Health protocol and Health section following further improved engagement with the Norfolk Clinical Commissioning Groups and the Sustainability and Transformation Partnership (STP); and
- Updates to the information regarding Elderly housing needs following the Norfolk County Council's development of a 'Supported Housing Delivery Programme' which will include a supported and agreed planning and housing need evidence base.

### **3. Delivery**

3.1 There are a number of groups working across Norfolk and Suffolk looking at

various aspect of housing delivery, these include:

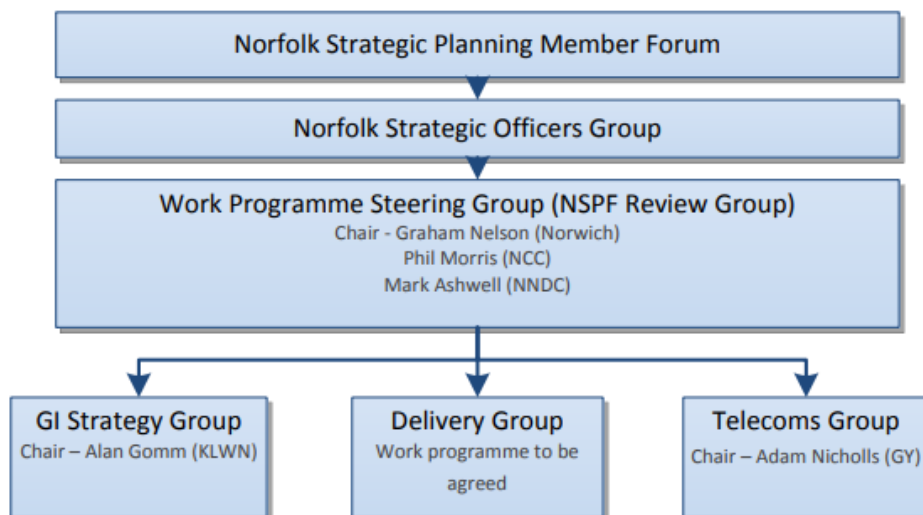
- Norfolk Operational Growth Group;
- Various Building Growth sub groups who are looking at housing delivery/innovation, planning innovation and the land market; and
- Norfolk Strategic Growth Group

3.2 It is proposed that before further delivery work is taken forward by the NSPF group it will be necessary to identify other work being completed and ensure a more joined up approach is taken to establish which tasks fit best within which groups. A more detailed report over how delivery matters can be cooperatively progressed is expected to be reported at the July Member Forum.

#### 4. Governance

4.1 The governance structure to oversee the 2018 work programme will remain broadly the same as the structure used for the production of the NSPF. The structure is set out in the diagram below. The changes to the NSPF will be created by the existing Steering Group which will report up to the NSPF and the Member Forum. The steering group will use Task and Finish Group to oversee specific specialist work covering the Green Infrastructure Strategy and Telecoms Shared Guidance.

4.2 Once it is clear what delivery work can be taken forward by the group it is likely a delivery group will be set up to oversee this work but this arrangement will be confirmed at the next member forum.



#### 5. Financial implications

5.1. Compliance with the Duty to Cooperate is important and actions consistent with the agreements within this document will be undertaken as appropriate

in the Local Plan. The Authority has contributed £5,000. Other Norfolk Local Planning Authorities have contributed £10,000.

## **6. Recommendation**

- 6.1 That Members note the report and endorse the work that is planned to review the NSPF and turn it into a Statement of Common Ground, plus additional work.

Background papers: None

Author: Natalie Beal

Date of report: 7 June 2018