

**Review of Waste Facilities**  
Report by Asset Officer

<p><b>Summary:</b> This report sets out the current position in relation to waste facilities throughout the Broads Authority's area.</p>
--

## **1 Background**

- 1.1 Changes in the Controlled Waste Regulations introduced on 1 April 2012 now specify that boat waste, where the boat is used for self-catering accommodation, is now classified as commercial waste rather than household waste. The local authorities also confirm that waste from other vessels which do not come under this definition, although not specifically stated in the regulations, will be treated by them as commercial waste.
- 1.2 Under the new regulations it is designated that "the polluter" has to pay for the cost of both the collection and disposal of the waste and Norfolk County Council has confirmed that they will be charging the local authorities for the services backdated to 1 April 2012.
- 1.3 This has resulted in the local authorities reviewing their provision of waste facilities over the Broads area.
- 1.4 A position paper regarding the provision of waste facilities was produced in conjunction with the Norfolk Waste Partnership and the local authority officer liaison group but unfortunately the Broads Authority was not initially consulted or included in the preparation of the document. The paper sets out the policy in regard to future provision for local authorities.
- 1.5 A meeting was held on 8 September 2014 at the request of the Broads Authority where representatives from all of the local authorities, Norfolk County Council and the Broads Hire Boat Federation were in attendance. The local authorities confirmed what facilities would be provided and those that would be withdrawn, and so together with facilities provided by boatyards and marinas a map and list of waste provision sites has been produced and distributed (Appendix 1).

## **2 Consultation**

- 2.1 Further to ongoing concerns from members and industry representatives, it was agreed that the Authority should closely monitor the situation and seek information from stakeholders as to waste facilities and any changing pattern of behaviour which could then be considered by members at a workshop. A

consultation pack (Appendix 2) requesting information on waste provision and feedback on complaints received regarding waste issues was sent out on 16 July 2015 to 129 local businesses including boatyards, marinas, local authorities and stakeholders. Seventeen replies were received although five were a nil return.

- 2.2 No specific information on complaints was received, with only one yard saying that they had received many complaints from hirers who would otherwise flytip their rubbish in the Burgh Castle area. The main elements of the information requested and general comments have been noted in a spreadsheet (Appendix 3). A further complaint had been received from Stokesby Parish Council, although did not submit any information on receipt of the consultation pack.

### **3 Gaps in Future Provision**

- 3.1 With the planned removal of further facilities by the end of 2015 it is likely that the facilities at Ranworth become even more heavily used.
- 3.2 Whilst provision on the river Yare appears reasonable, the river Waveney is poorly served, with no facilities downstream of Burgh St Peter, and other facilities only at the Yacht Stations at Oulton Broad and Beccles. However, the major difficulty here is that moorings do not have good access to enable bin lorries to service facilities.
- 3.3 The Broads Authority at the December 2014 meeting agreed to support the ongoing provision of replacement rubbish facilities at Ranworth, on the basis that the Broads Authority as landowner was liable at a cost of approximately £3,000 p.a.

### **4 Current Position**

- 4.1 The Authority has noticed an increase in the volume of refuse disposal at the Great Yarmouth and Norwich Yacht Stations over the last season at an additional of £1,000 p.a. and it is expected that this trend will continue.
- 4.2 We are continuing to monitor the waste issue and are continue to liaise with the local authorities on a regular basis.
- 4.3 The Asset Officer has attended a Westminster briefing “Recycling and Waste Management under the New Government” in October to ensure the Authority is up to date regarding current political issues and future trends regarding waste management.
- 4.4 The rangers report that during 2015 there have been no significant complaints or issues of fly tipping in any of the sites.
- 4.5 The table below shows the past/current and immediate future position on waste facility provision in the Broads area:

Local Authority	Position in 2014	Withdrawn facilities	Position in 2015
<b>Great Yarmouth</b>	Withdrew all facilities	<ul style="list-style-type: none"> <li>– Bell PH, St Olaves</li> <li>– Burgh Castle Marina</li> <li>– Repps Riverbank</li> <li>– Staithe Road, Repps</li> <li>– Thurne Staithe East &amp; West bank</li> <li>– Bridge Stores, Acle</li> <li>– Stokesby</li> <li>– Somerton Staithe East &amp; West bank</li> </ul>	No change by Great Yarmouth Borough Council but additional trade waste facilities now provided at Acle Bridge Stores and small bin provided at Repps riverbank.
<b>North Norfolk</b>	Consulted on intended removal for the majority of current provision – not undertaken	<ul style="list-style-type: none"> <li>– Horning Ferry</li> </ul>	It is still the Council's intention to withdraw all the current facilities by the end of the year, with the exception of 3 sites <ul style="list-style-type: none"> <li>– Hoveton Riverside Rd</li> <li>– Neatishead</li> <li>– Irstead</li> </ul>
<b>Broadland</b>	Consulted on withdrawal of 5 facilities - withdrawn	<ul style="list-style-type: none"> <li>– Reedham Ferry</li> <li>– Ranworth,</li> <li>– South Walsham Car park</li> <li>– Upton Boat Dyke</li> <li>– Salhouse Broad</li> </ul>	No change
<b>South Norfolk</b>	Withdrew 6 waste facilities	<ul style="list-style-type: none"> <li>– Bramerton</li> <li>– Waveney Inn</li> <li>– Beauchamp Arms</li> <li>– Langley Dyke</li> </ul>	Bramerton provision re-instated
<b>Norwich</b>	Do not provide boat waste facilities	N/A	No change
<b>Waveney</b>	Do not provide boat waste facilities	N/A	No change

## 5 Provision of Information

- 5.1 In order to avoid fly tipping as a result of boaters being unaware of the location of facilities, information has been produced for inclusion in the skippers manual which is placed on each hire boat, published on the Broads Authority and local authority websites, and included in relevant Broads Authority publications to ensure that the boating public are aware of the locations for waste facility provision.
- 5.2 Information signs are being placed at Broads Authority moorings to provide information on the location of the nearest sites both upstream and downstream of each mooring to aid boaters.

## **6 Conclusion**

- 6.1 Members guidance was sought at the last Navigation Committee meeting whether a workshop was still a priority and it was agreed that this report would be considered in the first instance. Given the lack of complaints received and any budgetary provision being made, it was proposed that the position regarding waste facilities continue to be closely monitored over the next year. This would enable officers to see whether any further issues arise and that consideration be given to a further project in future for a more comprehensive waste facility provision in future years should the need be determined and budget available.
- 6.2 At the meeting members supported the need to continue monitoring the situation and it was suggested that the Members Workshop be held at the end of the 2016 season.
- 6.3 Further to the report being presented to members there have been indications that North Norfolk District Council will be withdrawing 13 of its waste sites and retaining only three: Station Rd, Wroxham, Irstead and Neatishead Staithe prior to Easter 2016.









Background papers: Nil

Author: Angie Leeper  
Date of report: 11 January 2016  
Broads Plan Objectives: TR2.2

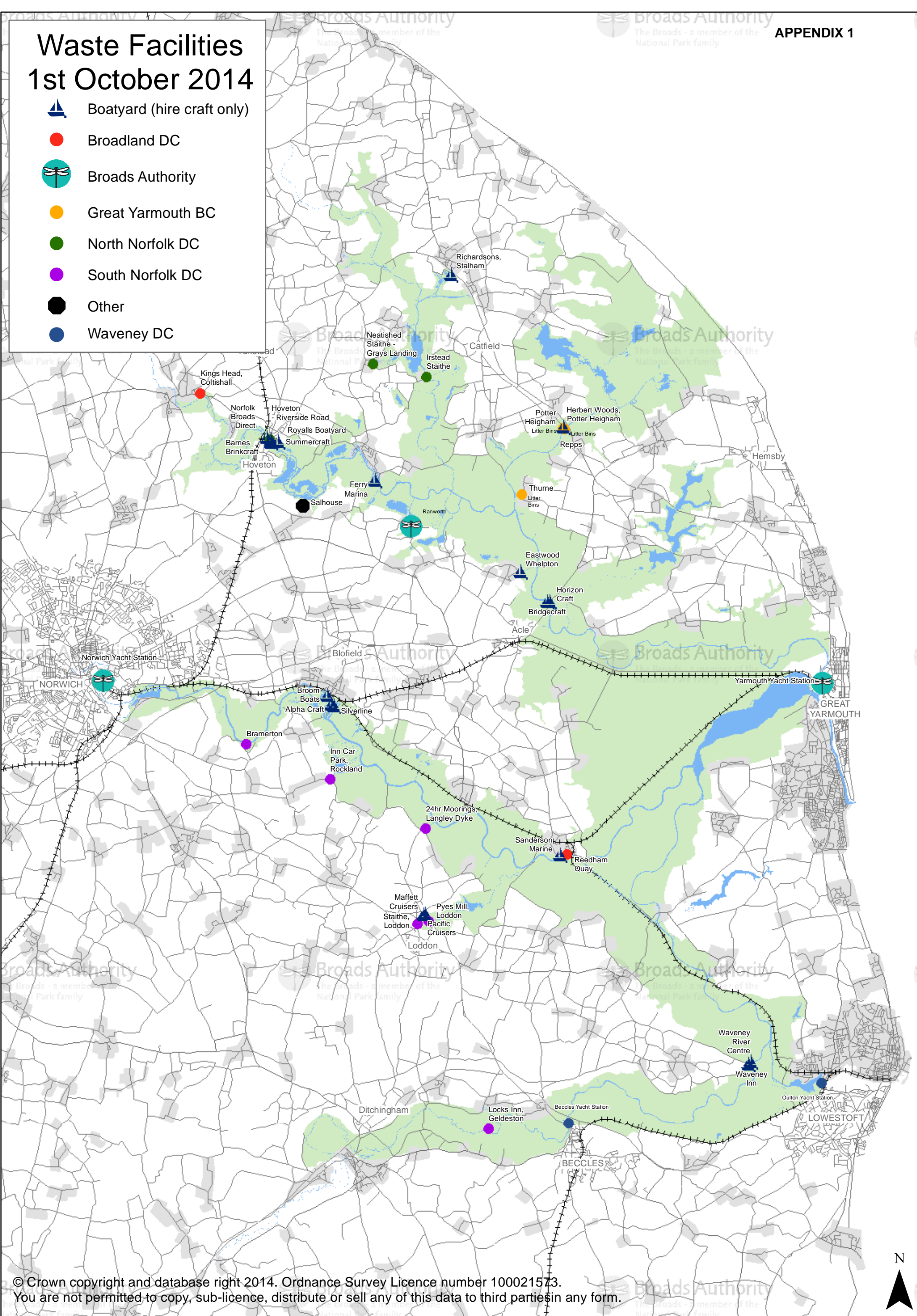
Appendices: Appendix 1 – Waste facility provision map  
Appendix 2 – Consultation pack  
Appendix 3 – Consultations responses

# Waste Facilities

## 1st October 2014

-  Boatyard (hire craft only)
-  Broadland DC
-  Broads Authority
-  Great Yarmouth BC
-  North Norfolk DC
-  South Norfolk DC
-  Other
-  Waveney DC

APPENDIX 1



Marina  
Boatyard

16 July 2015

Dear Sir/Madam

**Re: Waste Facilities**

At a recent meeting with the Broads Hire Boat Federation it was agreed that the Broads Authority would seek to collate information regarding waste facilities and related issues in the Broads, as this issue is considered a high priority by the industry. I have set out below some background to this topic, and enclose a copy of a recent Navigation Committee Report for your information.

As a result of changes in the Controlled Waste Regulations introduced on 1 April 2012 local authorities reviewed the provision of waste facilities across the Broads area and a number of facilities were subsequently removed. Facilities provided have been confirmed and a map and list of waste provision sites has been produced by boatyards, marinas, and local authorities. The map and list have also been enclosed.

To avoid fly tipping and to ensure that boaters are fully aware of the location of waste facilities, this information is published on Broads Authority and local authority websites, and is included in the hire boat operators' skippers manual, which is placed on each hire boat.

To ascertain whether more comprehensive waste facilities are required in future years it is also proposed that the situation is monitored during the coming summer period, to see whether issues arise at other sites due to the reduction of facilities in some areas. In order to assist with this process I would be grateful if you would provide information about any bins provided by your boatyard/marina on the enclosed Information Form.

I would also like to know of any complaints received from customers regarding waste facilities and would be grateful if you would record these on the Complaints Form provided.

Please return both forms to the Broads Authority by 1<sup>st</sup> November 2015. If you would like to return either of these forms via email please contact Jo Eames (Jo.Eames@broads-authority.gov.uk). Please note that we would like these forms returned even if you have no bins on site and no complaints to report as this is also useful information.

The information will be collated with data from the Broads Authority and local authorities, and it is intended to be reviewed at a stakeholder workshop in the Winter. All data provided which may be commercially sensitive will be treated confidentially.

Yours faithfully,

*Trudi Wakelin*

Trudi Wakelin  
Director of Operations

Enc

Strategic Review of Waste Facilities Report to the Navigation Committee  
Navigation Committee Minute  
Map of Waste Facilities  
List of Waste Facilities  
Information Form  
Complaints Form

## Waste Facilities Complaints Form

CONFIDENTIAL

Name of Boatyard/Marina \_\_\_\_\_

Date	Private or Hire User?	Location of Complaint (facility/site )	Description of Complaint	Description of Resolution	Any Other Comments



## WASTE FACILITIES INFORMATION FORM

Name of Boatyard/Marina: \_\_\_\_\_

<b>Please indicate the number of bins provided:</b>				
General:	Paper:	Bottle Bank:	Recycling:	Sanitary:
<b>Where are these facilities located?</b>				
General:				
Paper:				
Bottle Bank:				
Recycling:				
Sanitary:				
<b>Please indicate the size/number of bins provided (e.g. 1100L x 2):</b>				
General:	Paper:	Bottle Bank:	Recycling:	Sanitary:
<b>How often are the bins emptied or collected?</b>				
General:	Paper:	Bottle Bank:	Recycling:	Sanitary:
<b>Who is the waste contractor?</b>				
General:	Paper:	Bottle Bank:	Recycling:	Sanitary:
<b>How much does this service cost per unit/collection?</b>				
General:	Paper:	Bottle Bank:	Recycling:	Sanitary:
<b>How does this compare with the service provided last year?</b>				
General:	Paper:	Bottle Bank:	Recycling:	Sanitary:
<b>Any other comments:</b>				

Thank you for taking the time to complete this form. This information will help the Broad Authority to assess waste facilities in your area.

	Waveney River Centre	Marthan Ferry Boatyard	Horizon Craft, Acle	Fencraft	South Quays Marina	Galleon Storage & Mooring	Anchor Moorings, Coltishall	Topcraft	H E Hipperson	Southgates, Horning	St Olaves Marina	Goodchild Marine	Bank Boats	Oulton Broad Day Boats	Hunters Yard	Coxs Boatyard	Silverline Marine
General Bin Provision	7	x	1	1	1	1	x	x	1	2	3	x	x	x	x	2	2
Paper		x	1	x	x	x	x	x	1	x	x	x	x	x	x	x	1
Bottle Bank	1	x	x	x	x	x	x	x	2	x	x	x	x	x	x	x	1
Recycling	7	x	x	x	1	x	x	x	1	x	x	x	x	x	x	x	1
Sanitary	20	x	x	x	x	x	x	x	x	x	5	x	x	x	x	x	x
Dog Bin	x	x	x	x	x	x	1	x	x	x	x	x	x	x	x	x	x
Waste Contractor	Biffa	Glazewing	G W White	Norse	NNDC	V C Cooke	n/a	n/a	Waveney DC	x	Cookes	x	x	n/a	n/a	NNDC	Veolia

#### No feedback on complaints received were fed back but general comments received are listed below

There are no bins provided for boats. They use our skips but this costs us as a company as we pay commercial rate for the disposal of rubbish, and hire baots fly tip if not allowed to use our commercial bins

These bins are provided for mooring customers and hire boats purchasing diesel/ pump outs and water

We have no waste facilities

We have all private boats and they take their waste home with them We have a red doggy bin which is emptied by myself regualry. Passing holiday cruisers stop and use it also

The bins provided are not commercial and are provided by NNDC for residents

The bins provided are for our marina customers only. There are bins on the Staithe for the public

We have not completed the form as our bins are not for public use

We do not provide any facilities

Facilities provided are mainly used by paying customers although some visiting boat owners use the facilities without payment although this does prove difficult with ever increasing charges

Our facilities are predominantly used by our paying customers but there will eb some visiting boat owners and hirers who use the waste facilities without payment ( we do not charge for daytime mooring) We simply accept this, though it bewcomes harder as collection and disposal charges go up each year. If Council services are withdrwan it is inevitable that more of this boat waste will end up in our bins. We also provide 2 dog bins, which are again trated as a public facilitiy by dog owners.

We only hire out dayboats and canoes, and have signage to 'respectfully request customers to take their litter home. They actually generate very little waste.We do feel that as business rates are so high, with little being received, that councils should provide facilities.