

# 1 Appendix D.3: Mapping Supporting Information

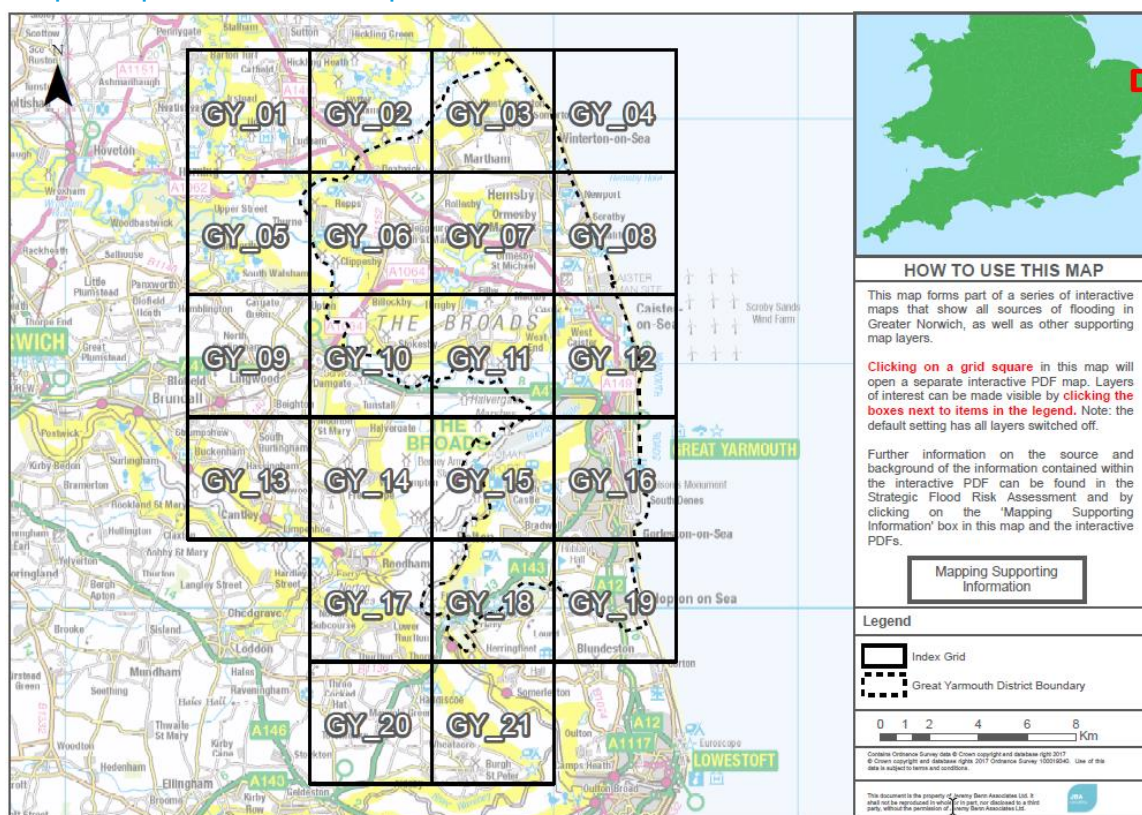
## 1.1 Introduction

This document provides supporting information to Appendix A: mapping of all sources of flood risk across the SFRA study area. Appendix A is presented as interactive GeoPDFs. The information in this document provides a visual guide of how to use GeoPDFs. The guide explains how the provided Index Map links to the Local Flood Risk Area Maps and their functionalities.

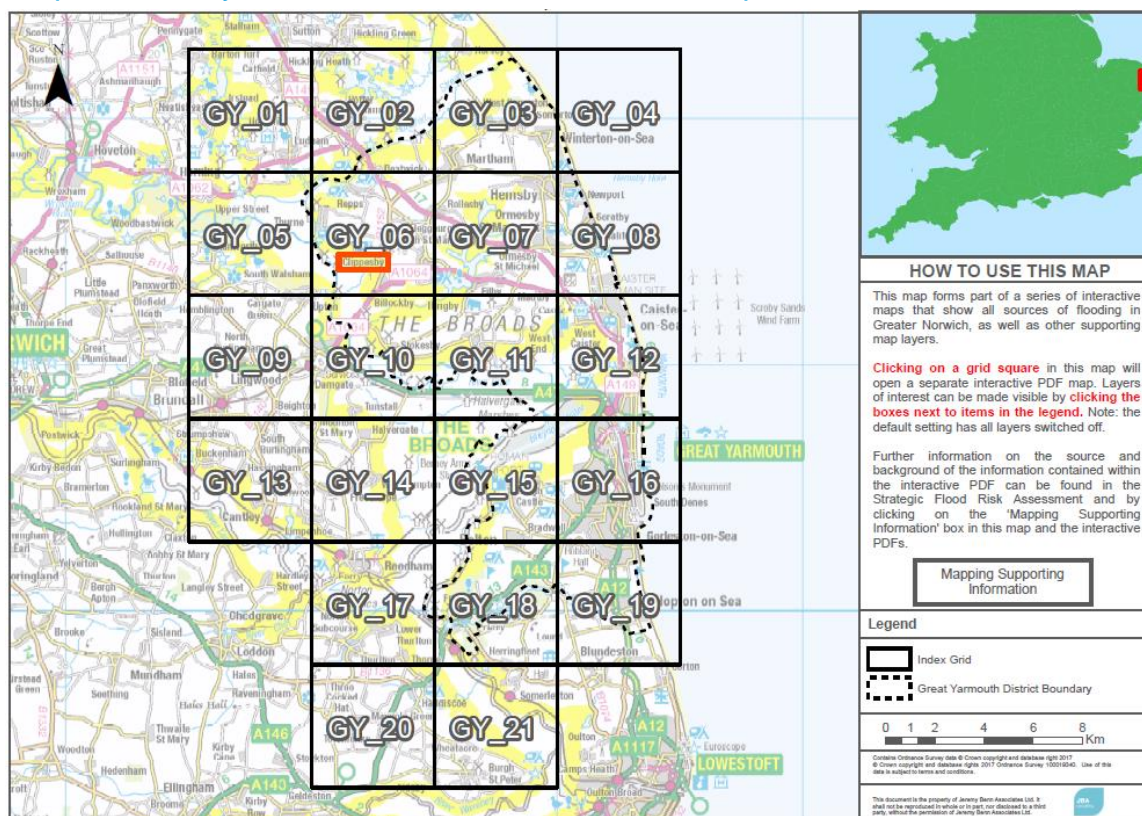
An accompanying document lists the mapping layers contained in Appendix A and the approaches used to derive the mapping layers in Appendix D.2.

## 2 Index Map - navigating to area of interest

### 2.1 Step 1: Open the Index Map

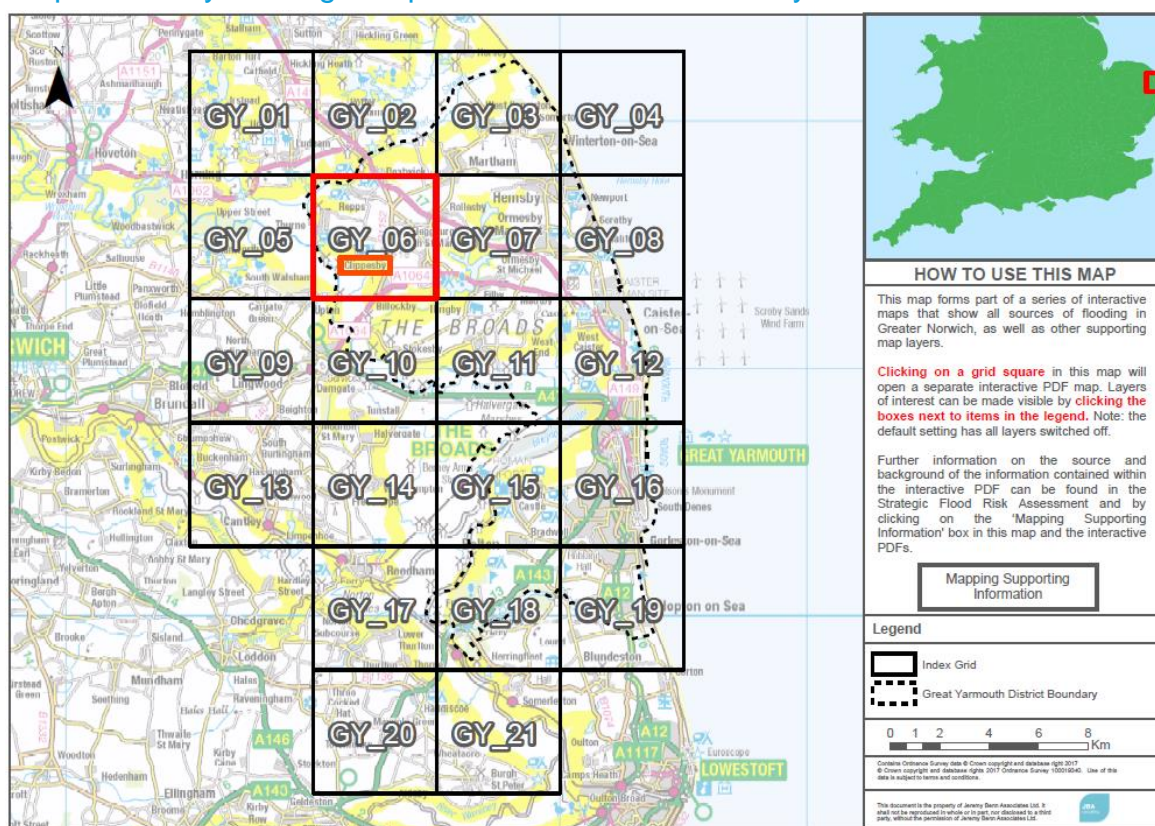


### 2.2 Step 2: Locate your area of interest on the index map

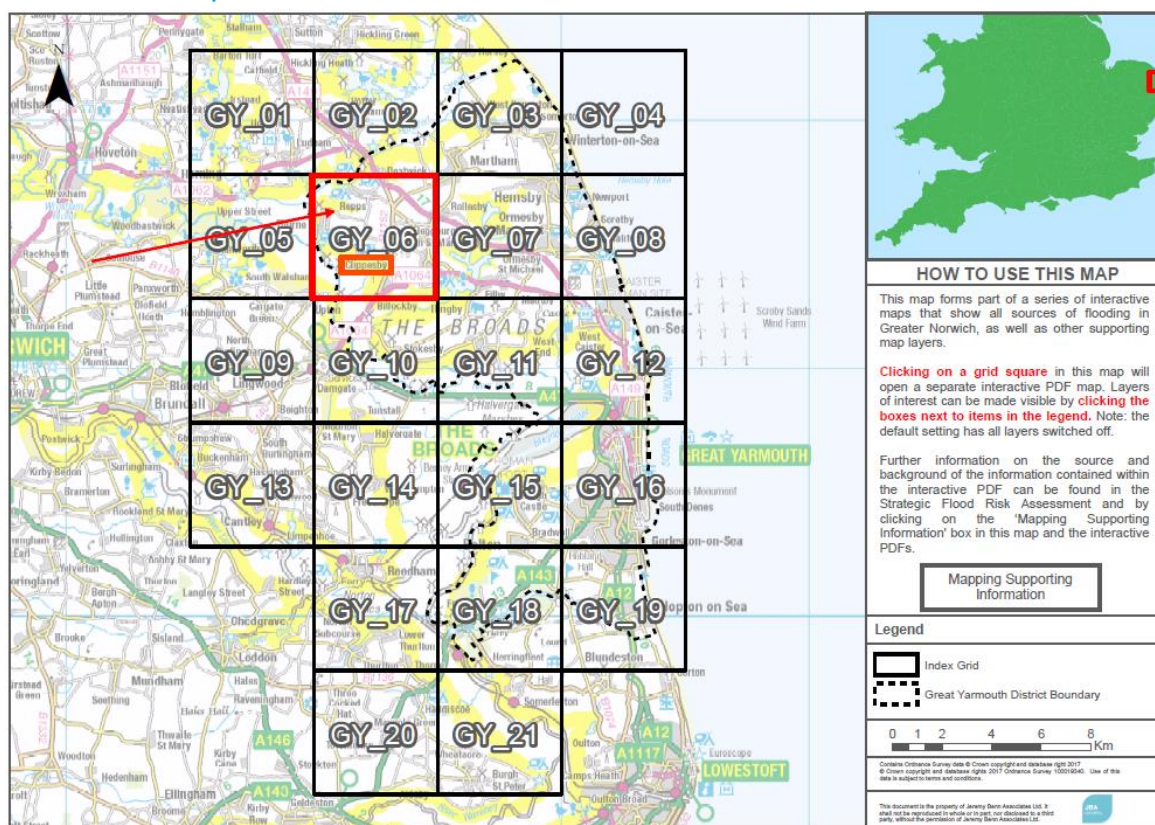




## 2.3 Step 3: Identify which grid square this area is covered by



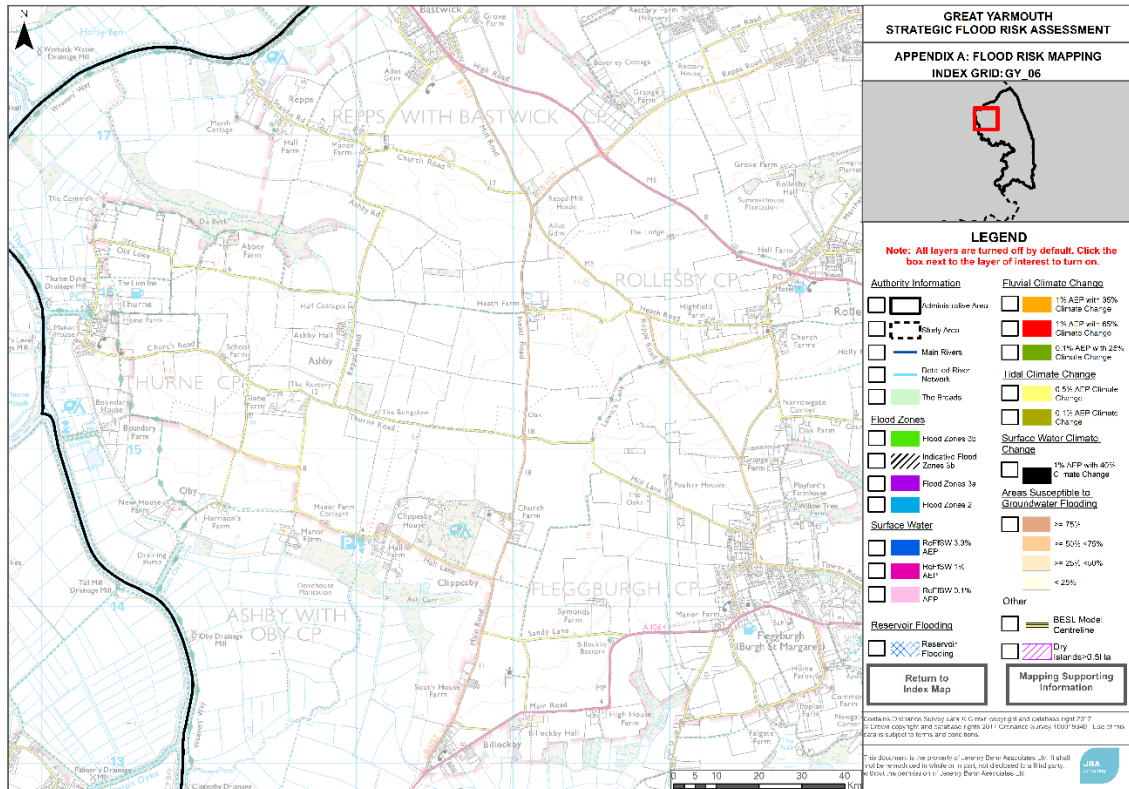
## 2.4 Step 4: Click on the identified grid square to open a new PDF - the Local Area Flood Risk Map



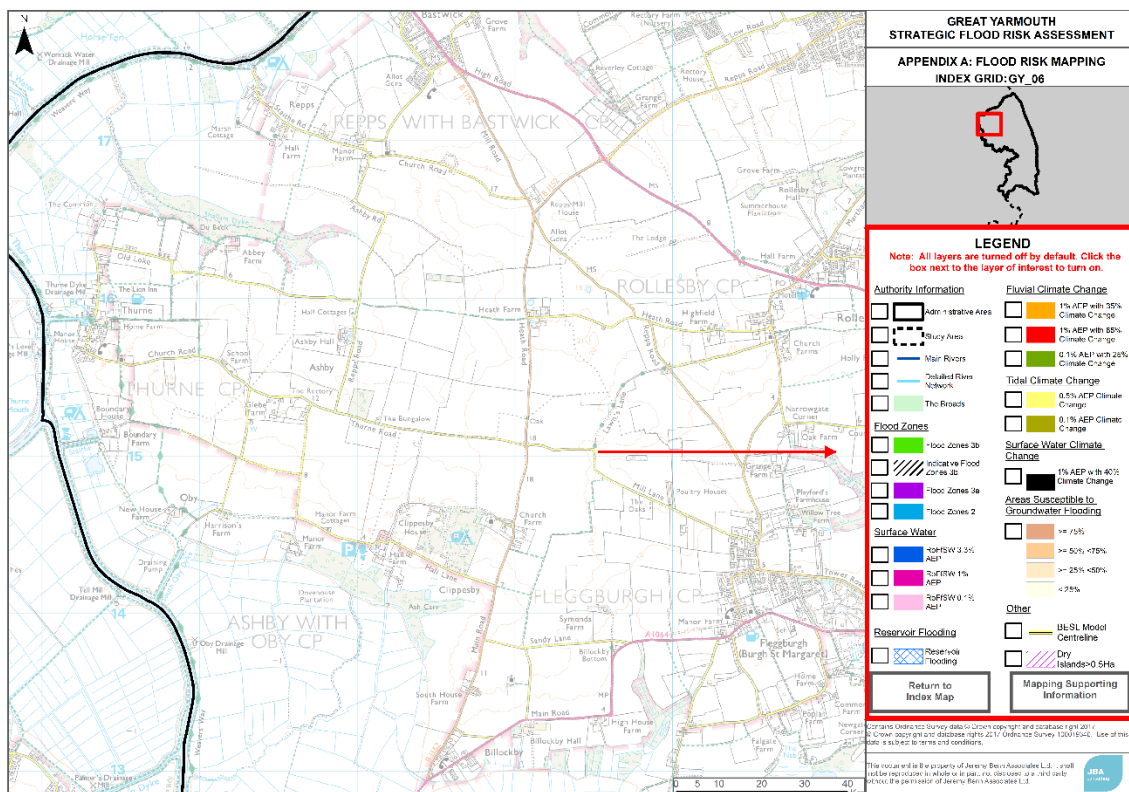


### 3 Local Area Flood Risk Map - displaying information

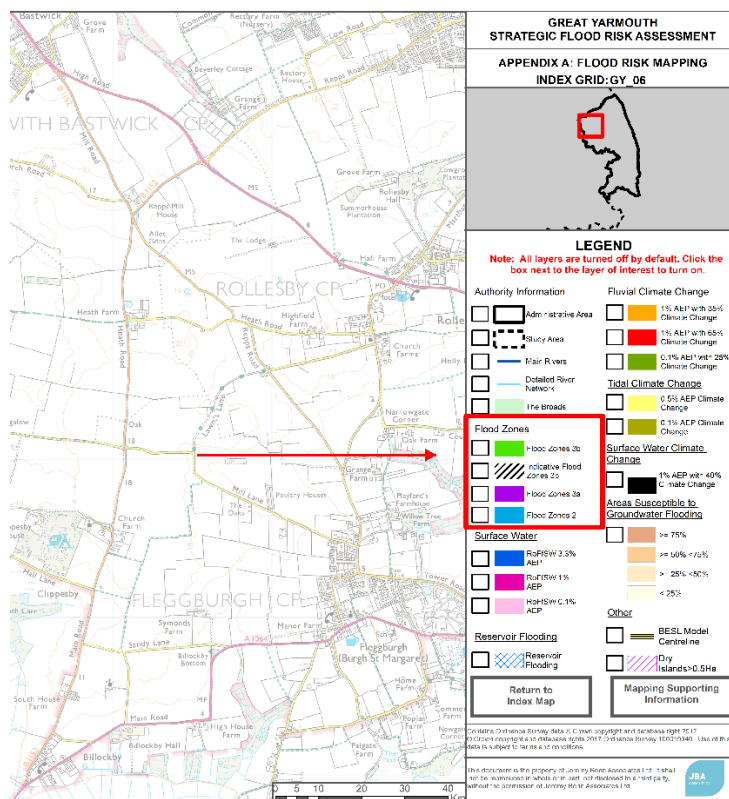
#### 3.1 Step 1: Local Area Flood Risk Map (Opened as part Step 2.4)



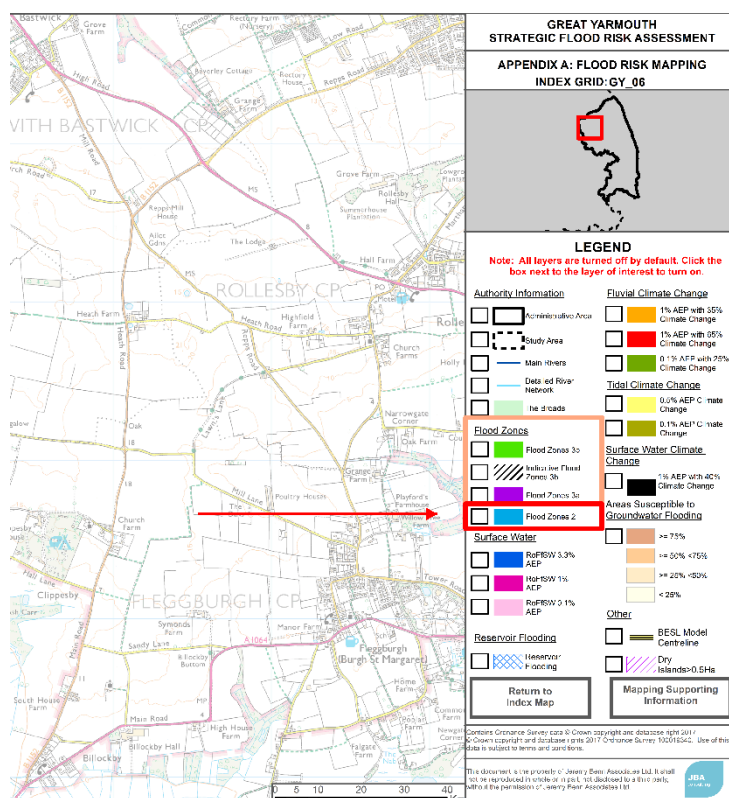
#### 3.2 Step 1: Look at the Legend in the white tab on the right-hand side of the map



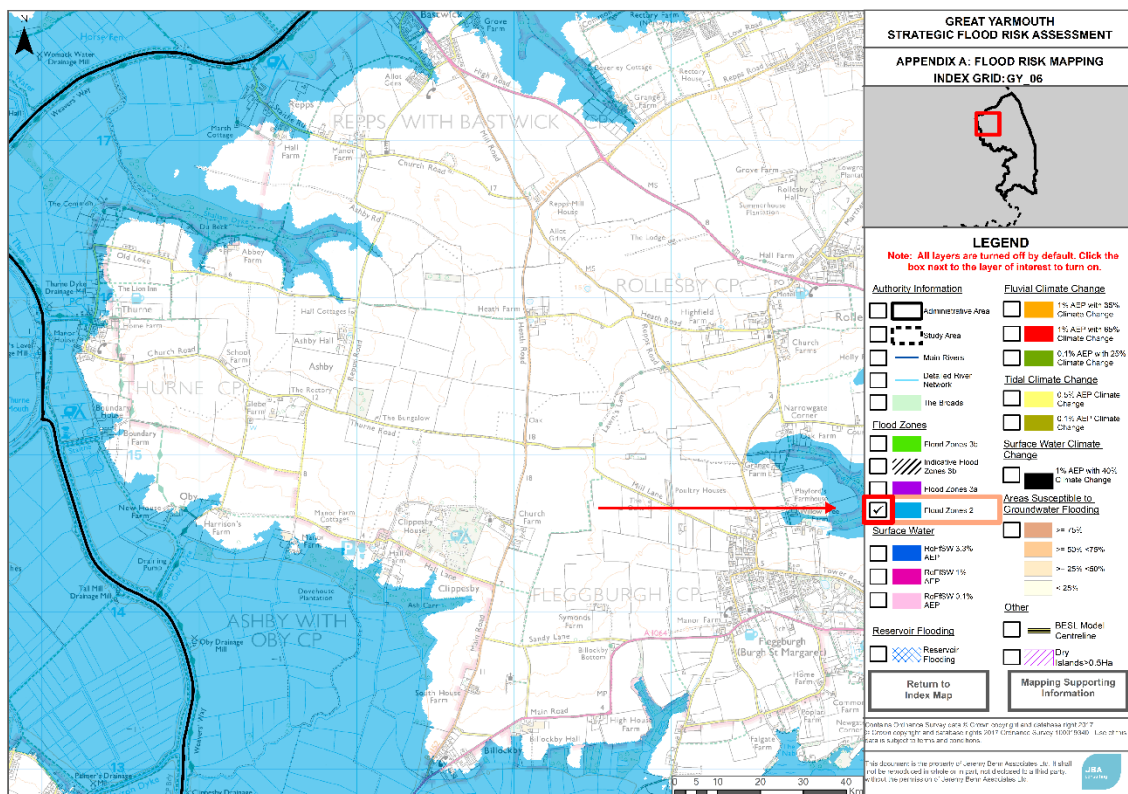
### 3.3 Step 2: Look at the underlined heading to identify the theme of the data you would like to look at



### 3.4 Step 3: Look at the information under the heading to identify which dataset you would like to look at



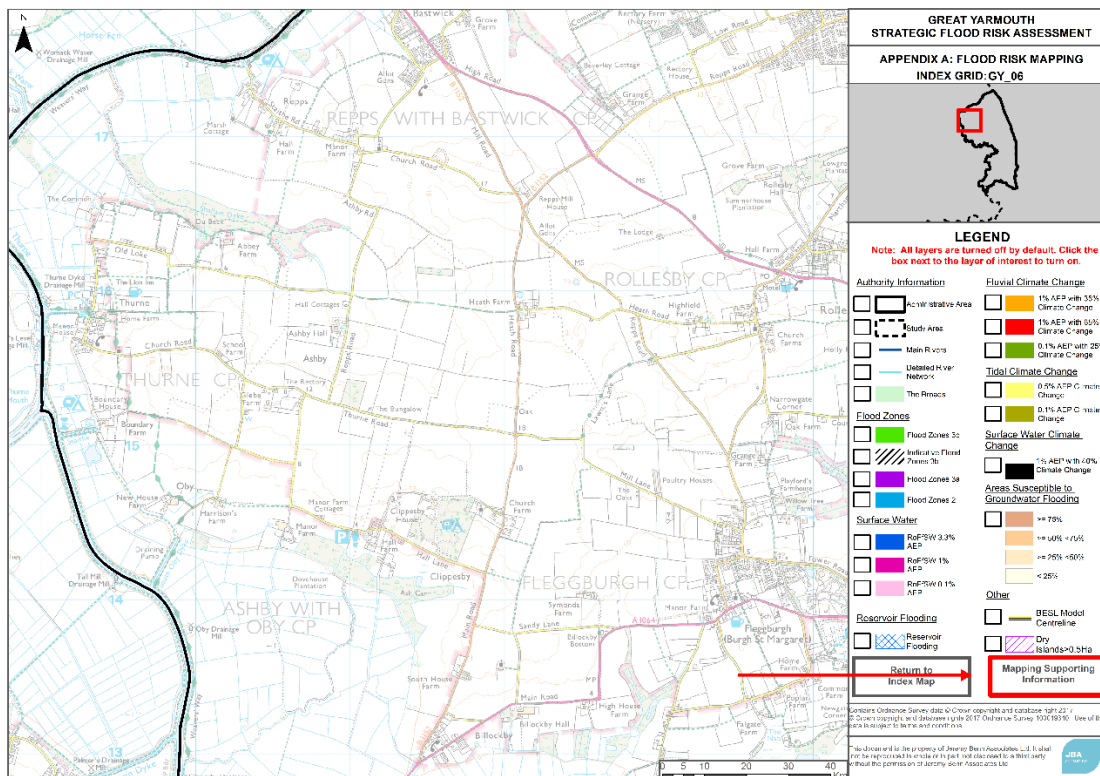
3.5 Step 4: Click in the grey box to the left of the coloured line or box denoting the dataset you are interested in. A tick will appear in the grey box which means that this dataset is 'turned on' and will appear on the map to the left



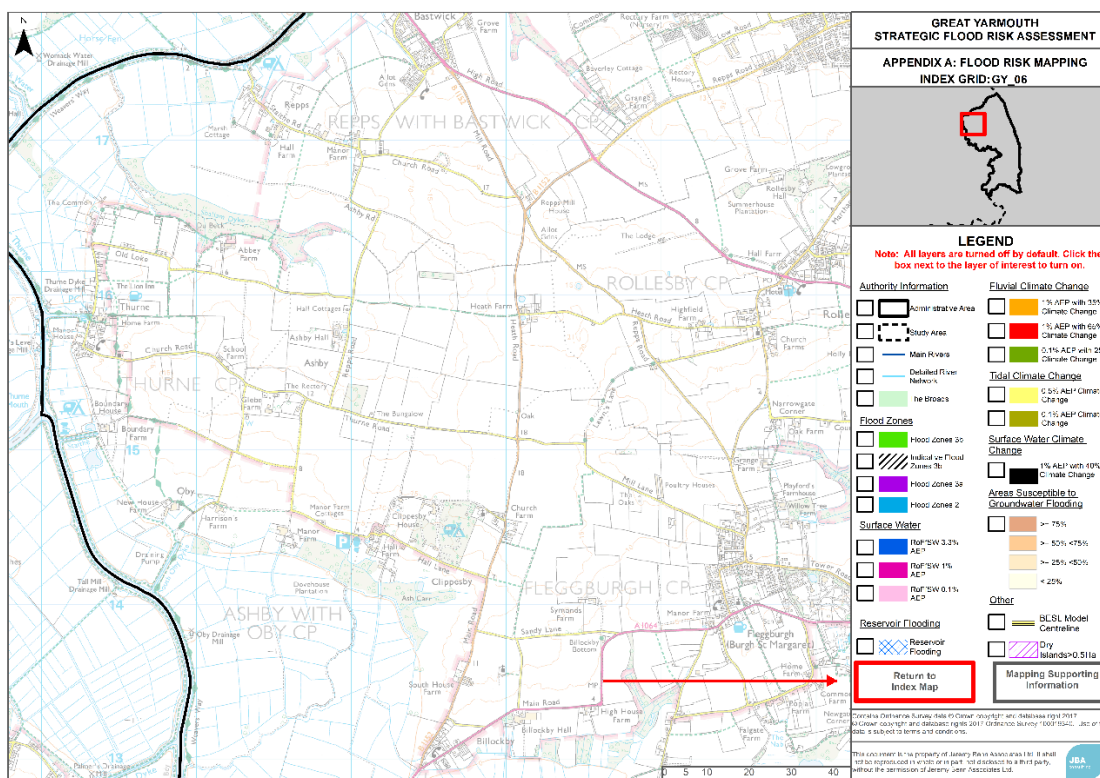


## 4 Other Map Functions

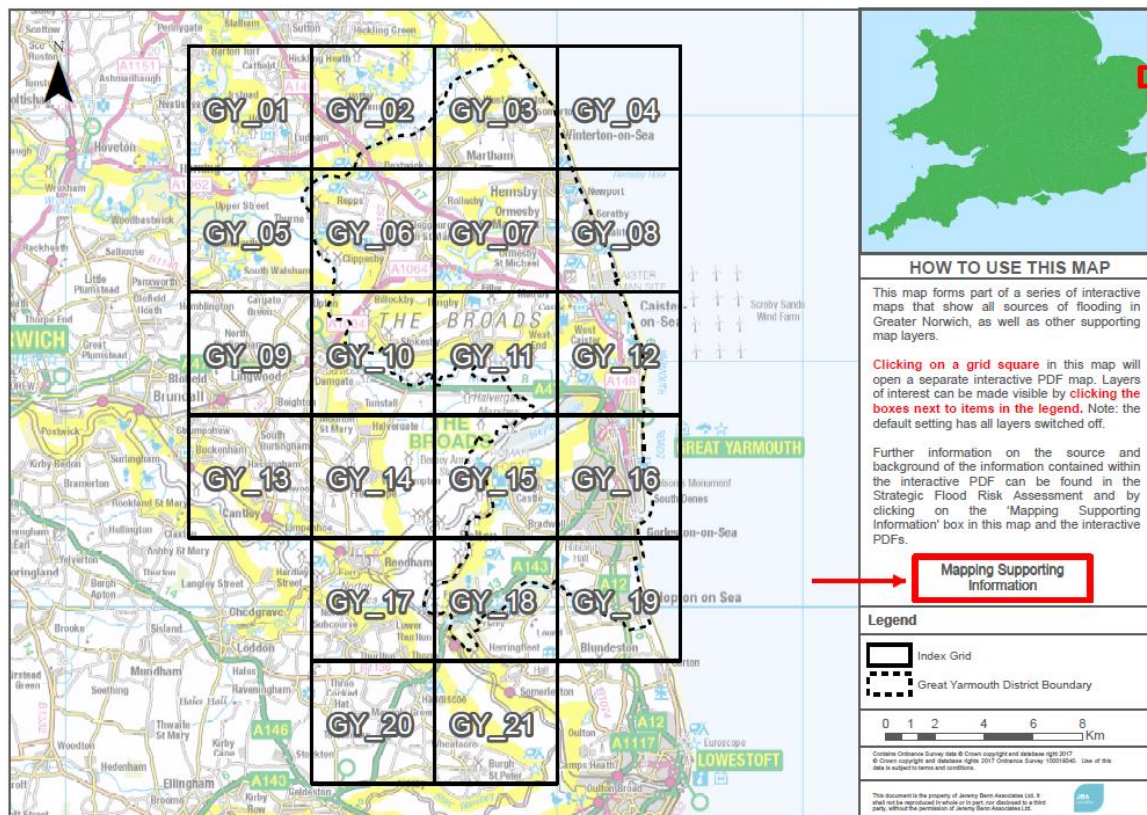
- 4.1 Clicking on the box 'Mapping Supporting Information' will open a new PDF file with information about the data that can be found on the map and the information in the 'How To' guide



- 4.2 Clicking on the box 'Return to Index Map' will open a new PDF file containing the Index Map



- 4.3 Clicking on the box 'Mapping Supporting Information' will open a new PDF file with information about the data that can be found on the map and the information in the 'How To' guide





## 5 FAQs

### 5.1 Can I have multiple datasets displayed on the map at once?

Yes, by clicking multiple grey boxes, as described in **Section 3.5**, you can have multiple datasets on the map.

### 5.2 Why is there data outside the District boundary?

This is to give a broader overview of the local area.

### 5.3 Why do some boxes not display any data?

This is because there is not any data in this local area for this dataset.

### 5.4 How do I know which grid I clicked on in the Index grid to get this Local Flood Risk Map?

At the top of the white tab and the right-hand side of the map, the map title in the second box down gives the Index grid code.