



Broads Local Plan
Deprivation Topic Paper
September 2021

Contents

1. Introduction.....	3
2. The Broads and Lower Layer Super Output Areas (LSOAs).....	3
3. Indices of Multiple Deprivation - Maps.....	3
4. Index of Multiple Deprivation	5
5. The Income Deprivation Domain	7
6. The Employment Deprivation Domain.....	9
7. The Education, Skills and Training Deprivation Domain	11
8. The Health Deprivation and Disability Domain	14
9. The Crime Domain.....	16
10. The Barriers to Housing and Services Domain	18
11. The Living Environment Deprivation Domain	21
12. Conclusion	24
Appendix 1: The estimated population of the Broads in each LSOA.....	29

1. Introduction

This Topic Paper discusses the issue of Deprivation as it relates to the Broads Authority Executive Area.

2. The Broads and Lower Layer Super Output Areas (LSOAs)

LSOAs (Lower-layer Super Output Areas) are small areas designed to be of a similar population size, with an average of approximately 1,500 residents or 650 households. There are 32,844 Lower-layer Super Output Areas (LSOAs) in England. They were produced by the Office for National Statistics for the reporting of small area statistics.

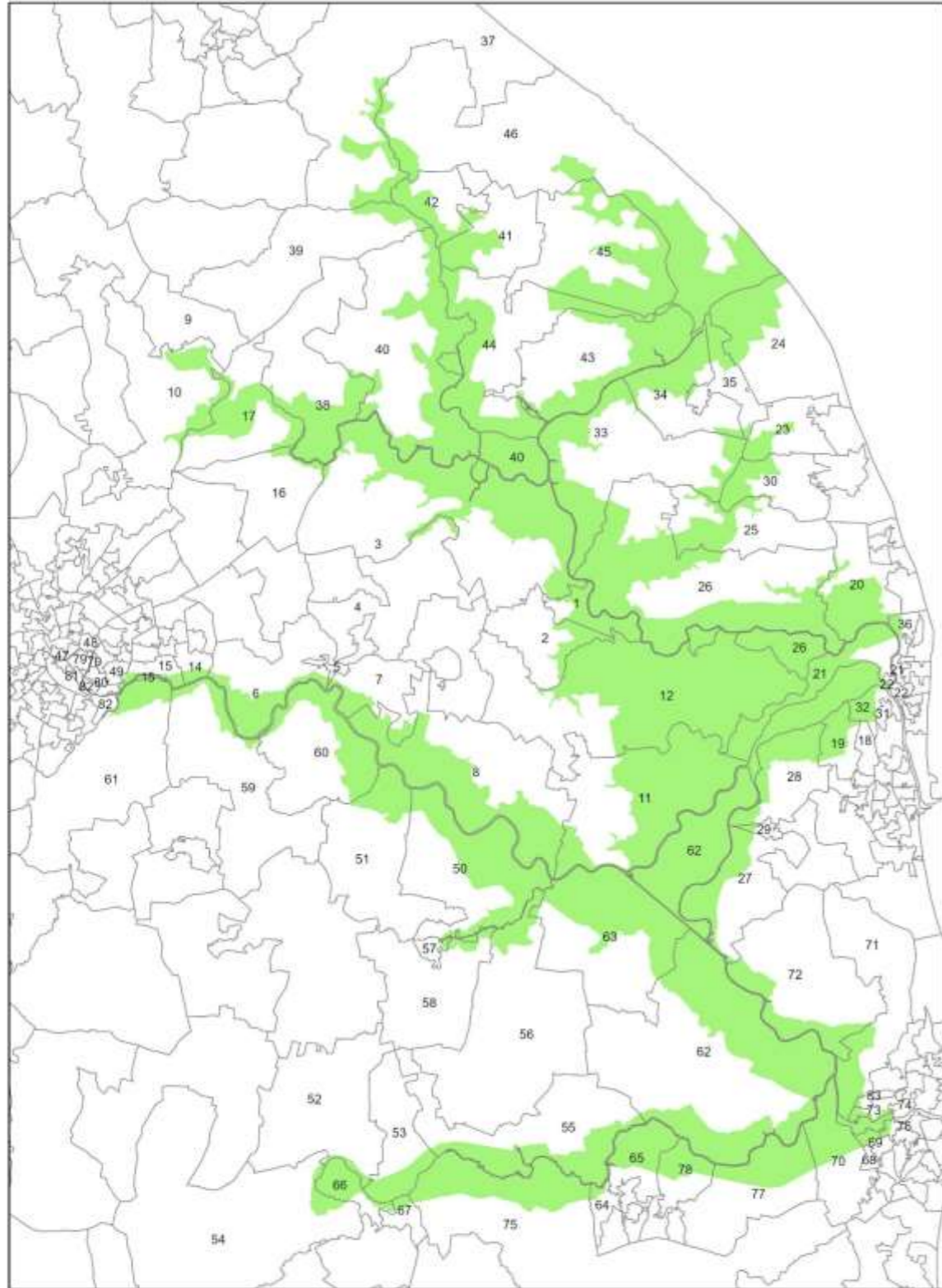
For each measure, the LSOA with a **rank** of 1 is the most deprived and the LSOA with a rank of 32,844 is the least deprived. The following map and tables (Figure 1) shows the LSOAs that are part or all within the Broads Authority Executive area.

3. Indices of Multiple Deprivation - Maps

Maps later in the document show the parts of the LSOAs in the Broads and the 2019 Indices of Deprivation (dark blue is lowest and light blue is highest) as well as comparisons to the 2015 Indices (using a traffic light system showing the least deprived as green and most deprived as red).

It is important to note that whilst looking at the maps, not all of the population of the LSOA are entirely within the Broads. Because LSOAs span the boundary of the Broads Authority Executive Area, an assessment was made to ascertain the likely proportion of population of a particular LSOA in the Broads. The summary is displayed in the table on the following page. The maps later in the document only show LSOAs which are likely to have a population in the Broads part of the LSOA. Those assessed as having 0% population in the Broads are white (and so too is Breydon Water).

Figure 1: LSOAs which are all or part in the Broads Authority Executive Area.



Ministry of Housing Communities and Local Government. Contains National Statistics data. Contains public sector information licensed under the Open Government Licence v3.0. © Crown copyright and database rights 2020 OS 100021573.

Table 1: This table gives the LSOA reference number for each map reference as well as the estimated percentage of the population of each LSOA within the Broads.

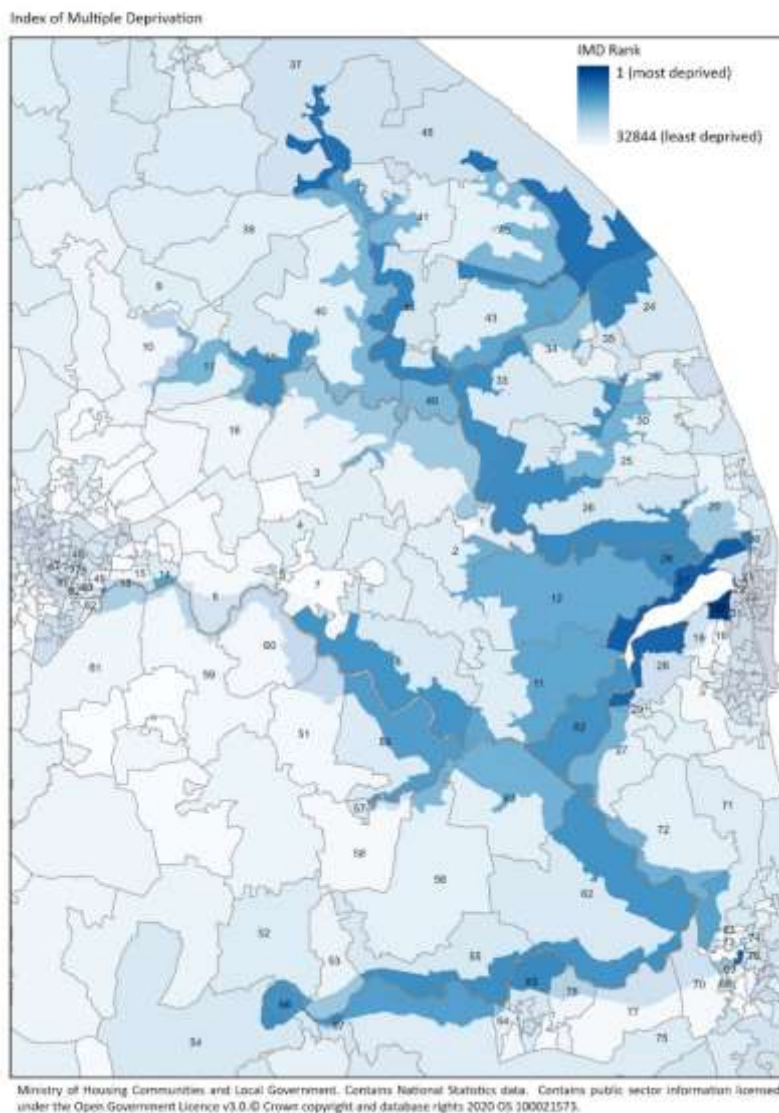
Ref	LSOA11CD	% of LSOA population in the Broads.	Ref	LSOA11CD	% of LSOA population in the Broads.	Ref	LSOA11CD	% of LSOA population in the Broads.	Ref	LSOA11CD	% of LSOA population in the Broads.
1	E01026497	0.90%	22	E01026597	0.00%	43	E01026783	17.85%	64	E01030224	44.90%
2	E01026498	0.00%	23	E01026605	0.40%	44	E01026784	28.28%	65	E01030225	12.49%
3	E01026504	5.00%	24	E01026606	13.22%	45	E01026785	3.16%	66	E01030230	25.85%
4	E01026505	0.00%	25	E01026608	13.13%	46	E01026786	1.73%	67	E01030231	1.35%
5	E01026508	0.00%	26	E01026609	38.60%	47	E01026823	0.00%	68	E01030234	0.00%
6	E01026509	2.82%	27	E01026613	9.00%	48	E01026848	0.00%	69	E01030235	6.32%
7	E01026510	12.60%	28	E01026614	14.75%	49	E01026849	19.12%	70	E01030237	0.58%
8	E01026511	9.61%	29	E01026616	0.00%	50	E01026879	22.40%	71	E01030259	30.97%
9	E01026516	0.00%	30	E01026629	28.38%	51	E01026880	12.95%	72	E01030260	4.11%
10	E01026517	11.93%	31	E01026634	0.00%	52	E01026892	3.59%	73	E01030269	50.68%
11	E01026538	8.77%	32	E01026635	3.56%	53	E01026893	52.11%	74	E01030270	12.94%
12	E01026539	4.84%	33	E01026636	16.65%	54	E01026894	5.27%	75	E01030286	19.20%
14	E01026575	2.95%	34	E01026637	13.30%	55	E01026898	18.69%	76	E01030289	34.64%
15	E01026577	19.48%	35	E01026638	0.40%	56	E01026899	4.66%	77	E01030293	0.00%
16	E01026579	1.07%	36	E01026640	11.60%	57	E01026911	5.70%	78	E01030294	0.55%
17	E01026580	29.24%	37	E01026740	23.41%	58	E01026912	4.07%	79	E01033438	0.00%
18	E01026581	2.53%	38	E01026744	34.01%	59	E01026929	12.76%	80	E01033439	0.27%
19	E01026582	3.52%	39	E01026767	23.67%	60	E01026930	3.48%	81	E01033440	0.00%
20	E01026593	24.95%	40	E01026769	33.52%	61	E01026937	5.40%	82	E01033441	1.96%
21	E01026596	3.97%	41	E01026774	4.98%	62	E01026943	7.54%	83	E01030268	0.71%
			42	E01026776	20.13%	63	E01026944	6.69%			

4. Index of Multiple Deprivation

The **Index of Multiple Deprivation (IMD)** is an overall relative measure of deprivation constructed by combining seven domains of deprivation according to their respective weights, as described below. These Domains are also discussed in this document separately.

- Income Deprivation (22.5%)
- Employment Deprivation (22.5%)
- Education, Skills and Training Deprivation (13.5%)
- Health Deprivation and Disability (13.5%)
- Crime (9.3%)
- Barriers to Housing and Services (9.3%)
- Living Environment Deprivation (9.3%)

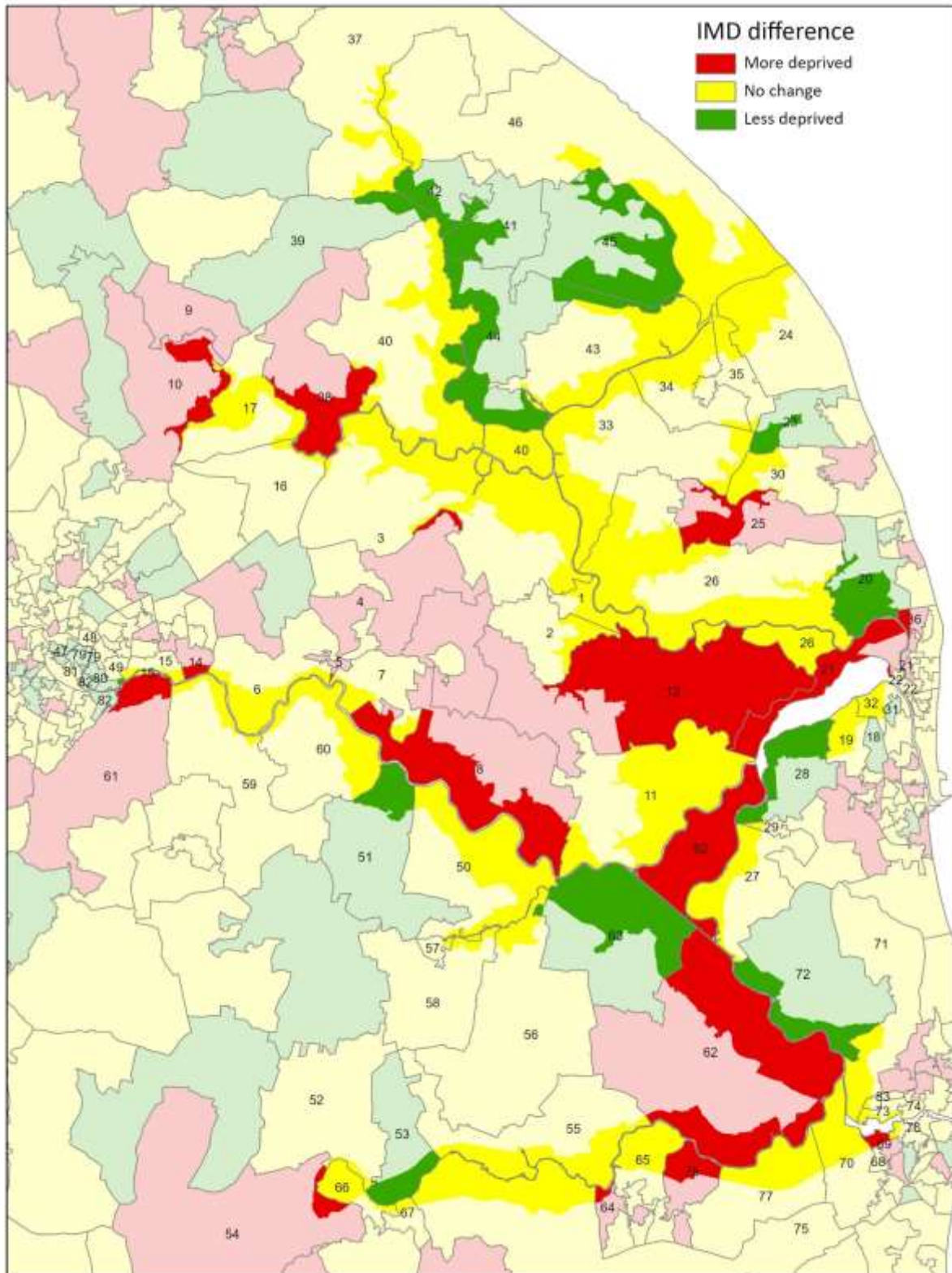
The following map shows the 2019 Indices of Multiple Deprivation.



There is an area of dark blue (most deprived) near to Great Yarmouth.

The following map compares the 2015 and 2019 data. Generally, the results are mixed. Perhaps for the most of the area, there is no change, but as can be seen, some areas have improved, but some areas have got worse.

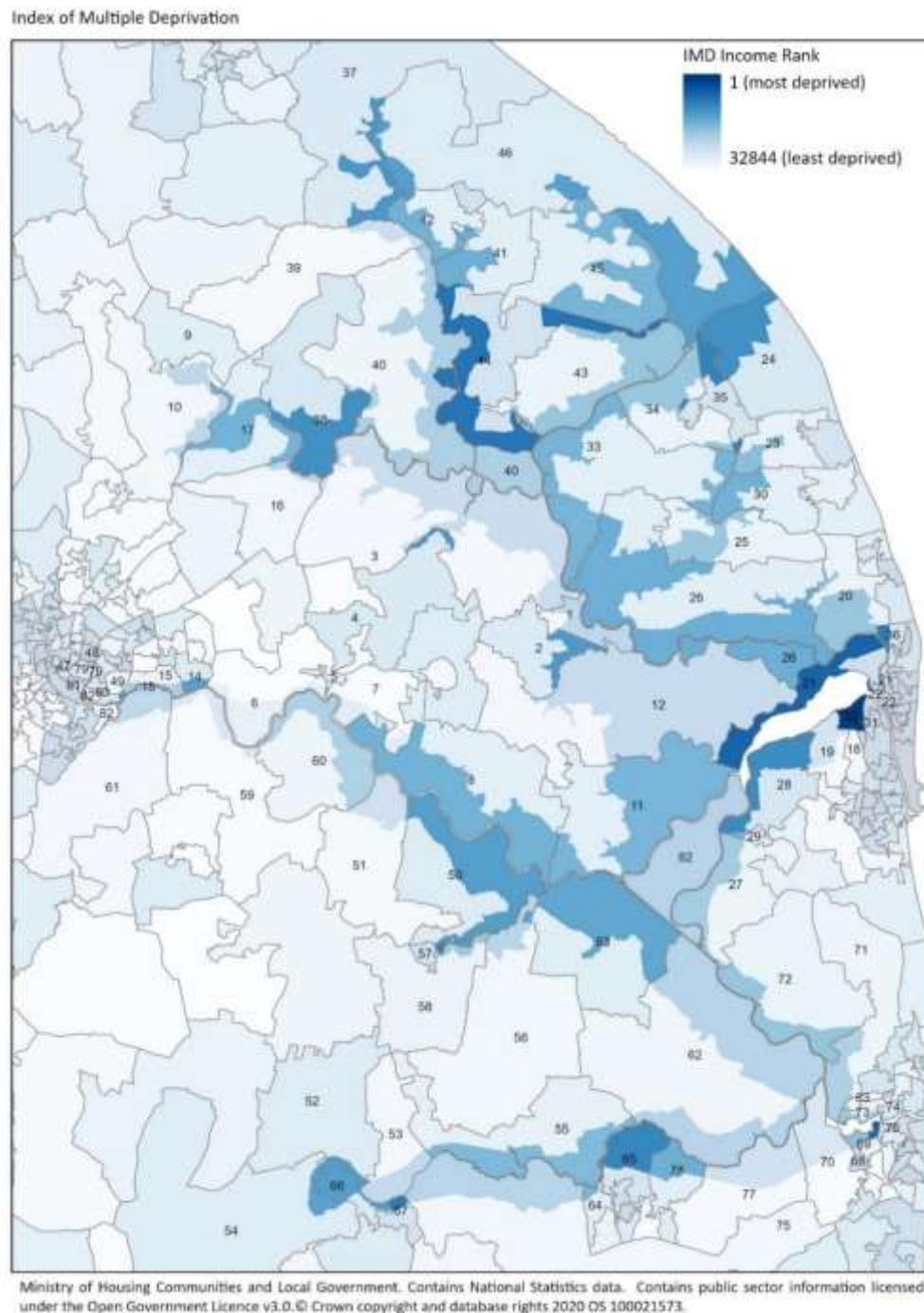
Index of Multiple Deprivation - 2019 vs. 2015 decile comparison



Ministry of Housing Communities and Local Government. Contains National Statistics data. Contains public sector information licensed under the Open Government Licence v3.0. © Crown copyright and database rights 2020 OS 100021573.

5. The Income Deprivation Domain

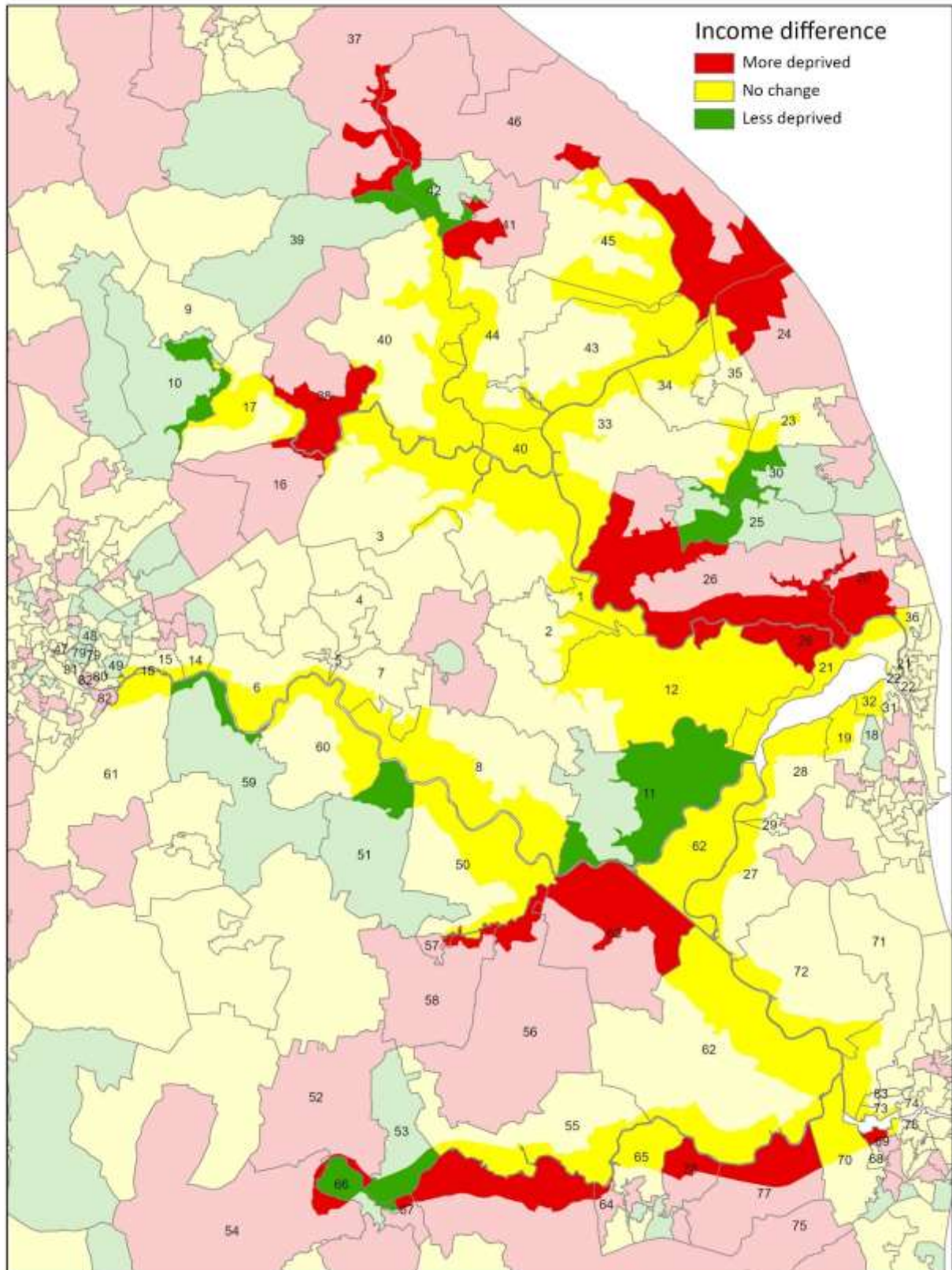
The **Income Deprivation** Domain measures the proportion of the population experiencing deprivation relating to low income. The definition of low income used includes both those people that are out-of-work, and those that are in work but who have low earnings (and who satisfy the respective means tests). The following map shows the 2019 Income Rank.



Generally, the shades of blue are lighter around the Broads, although there are some pockets of darker blue, particularly the LSOA near to/in Great Yarmouth being the darkest blue for the area.

The following map compares the 2015 and 2019 data. This again shows a mixture of change. It seems most of the area has not changed in relation to this domain.

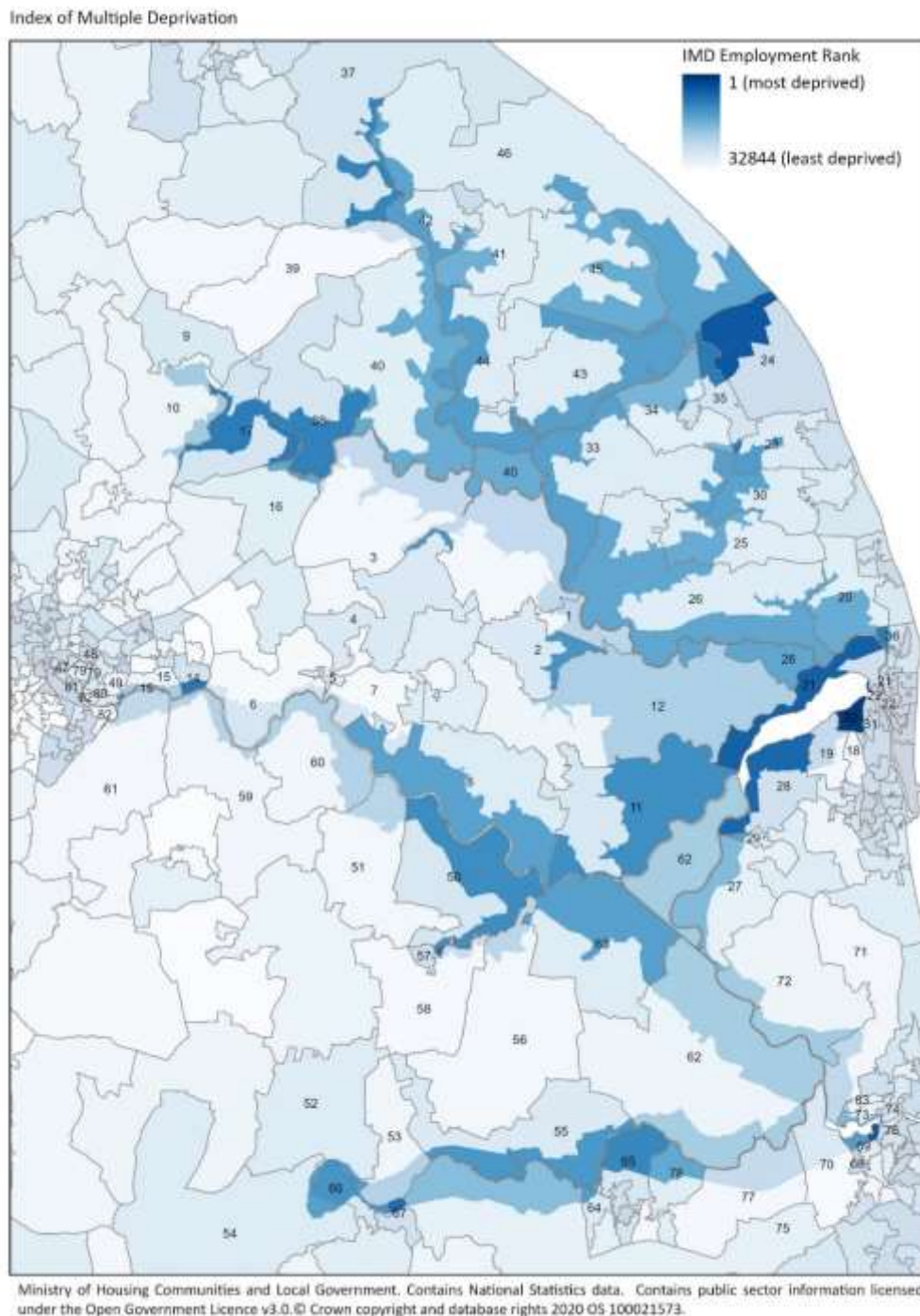
Index of Multiple Deprivation - 2019 vs. 2015 decile comparison



Ministry of Housing Communities and Local Government. Contains National Statistics data. Contains public sector information licensed under the Open Government Licence v3.0. © Crown copyright and database rights 2020 OS 100021573.

6. The Employment Deprivation Domain

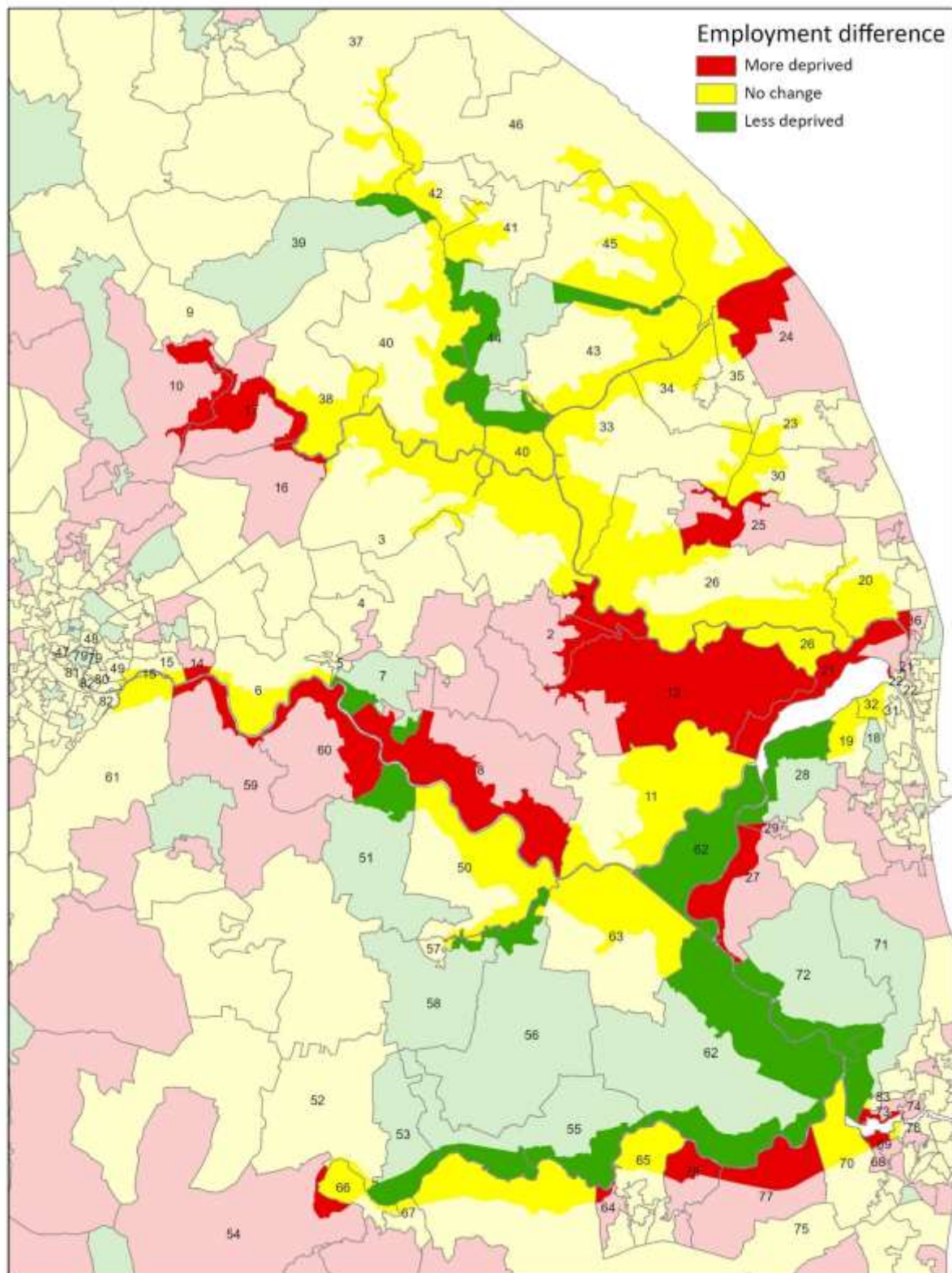
The **Employment Deprivation** Domain measures the proportion of the working-age population in an area involuntarily excluded from the labour market. This includes people who would like to work but are unable to do so due to unemployment, sickness or disability, or caring responsibilities.



Generally, the colouring is towards the dark end of the spectrum. Again, the LSOA near to Great Yarmouth stands out as being the darkest blue and therefore the most deprived for this domain.

The following map compares the 2015 and 2019 data. A mixture is evident again with the majority of the area having no change.

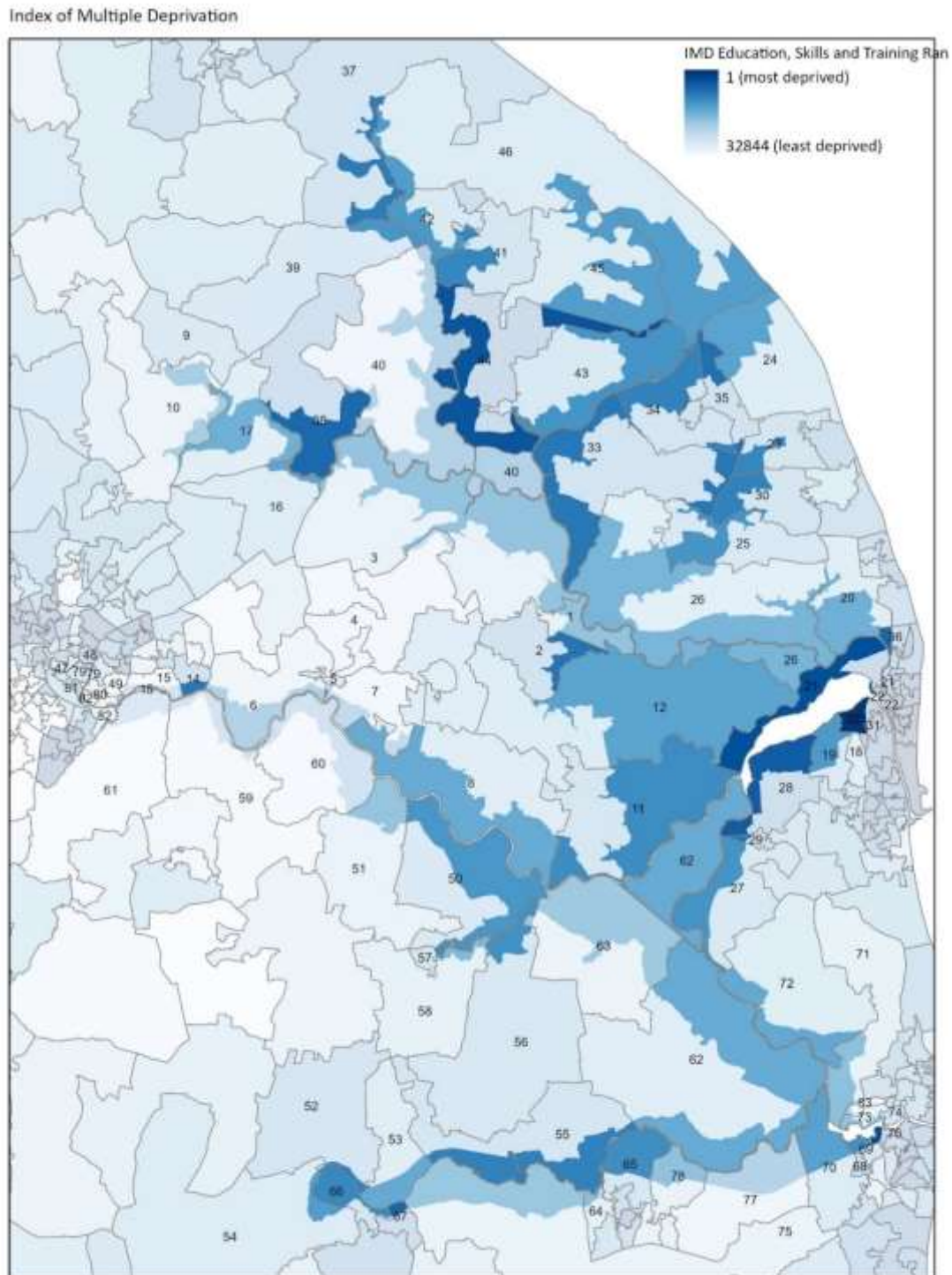
Index of Multiple Deprivation - 2019 vs. 2015 decile comparison



Ministry of Housing Communities and Local Government. Contains National Statistics data. Contains public sector information licensed under the Open Government Licence v3.0. © Crown copyright and database rights 2020 OS 100021573.

7. The Education, Skills and Training Deprivation Domain

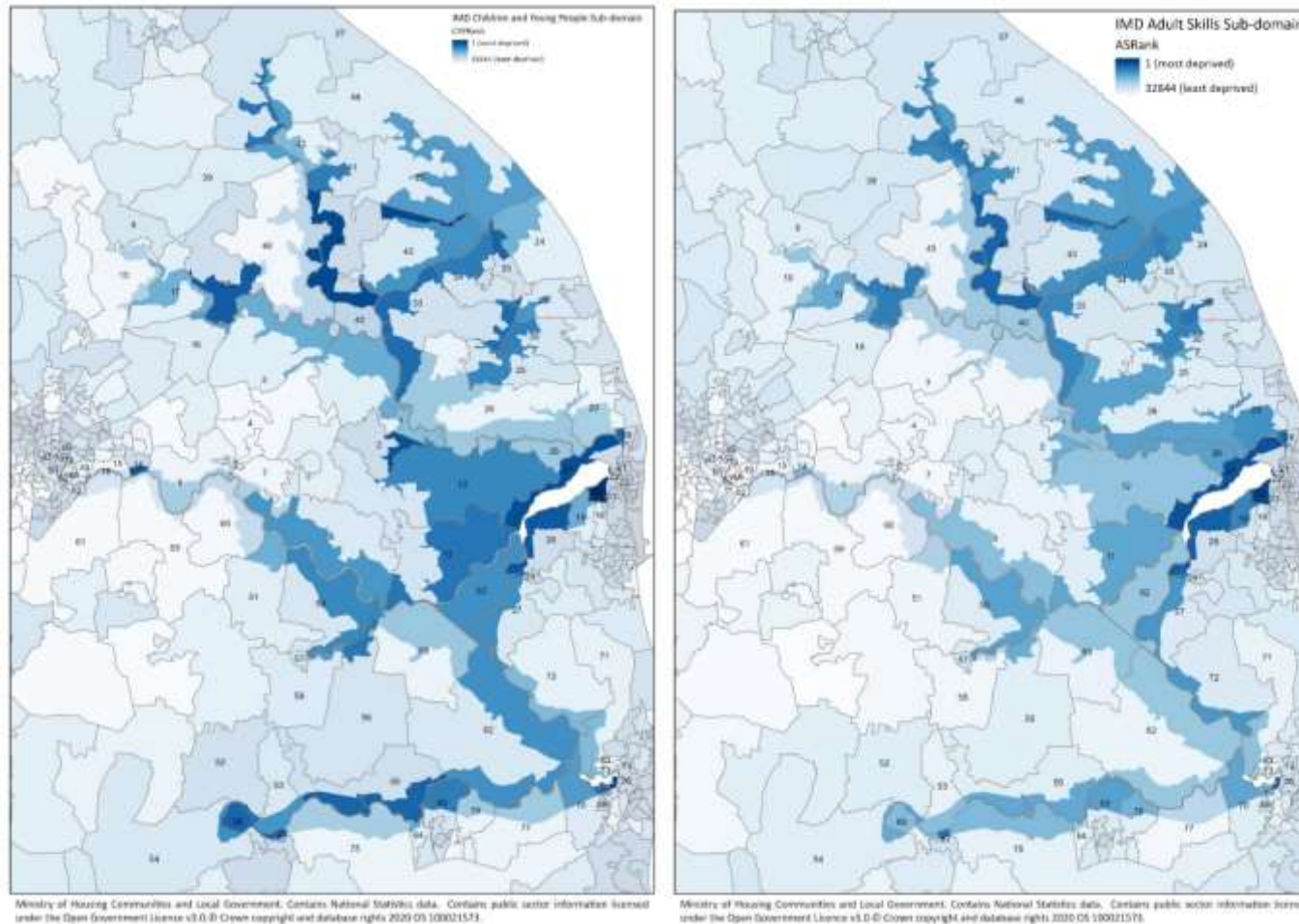
The **Education, Skills and Training Deprivation** Domain measures the lack of attainment and skills in the local population. The indicators fall into two sub-domains: one relating to children and young people and one relating to adult skills.



Ministry of Housing Communities and Local Government. Contains National Statistics data. Contains public sector information licensed under the Open Government Licence v3.0. © Crown copyright and database rights 2020 OS 100021573.

Generally towards the darker blue of the colouring. The LSOA nearer to Great Yarmouth is again the darkest blue, so most deprived in relation to this domain.

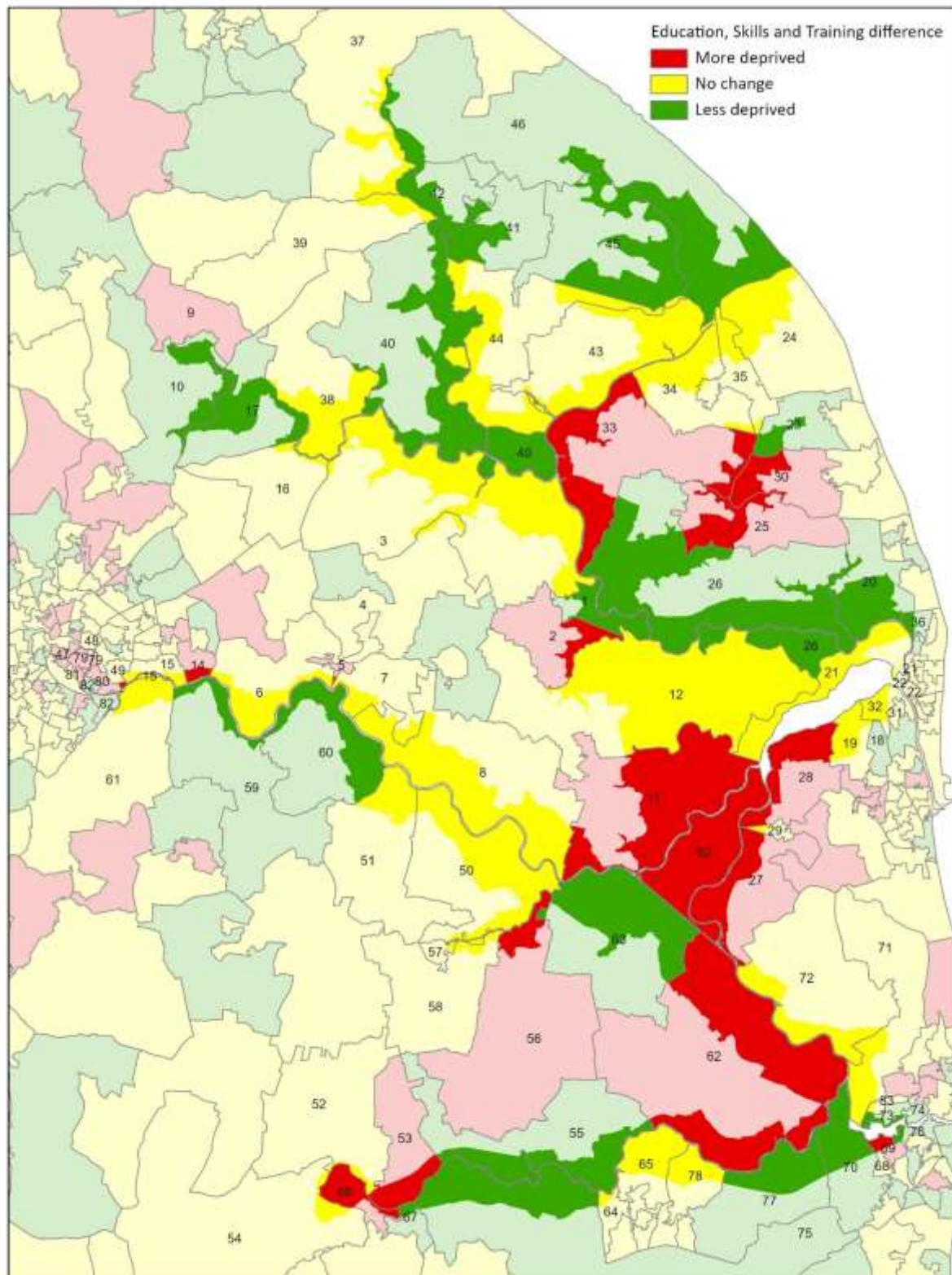
The education, skills and training domain is made up for two sub-domains. The map on the left shows the children and young people sub-domain and on the right, the adult skills sub-domain.



The children and young people map is generally medium blue suggesting the area is towards the more deprived in relation to qualifications attainment of children. There are some areas of particularly dark blue. Whereas for adults, the map is lighter blue in general so towards the least deprived. The LSOA near to Great Yarmouth again is the darkest blue.

The following map compares the 2015 and 2019 data. The area seems mixed, but in fairly equal proportions in terms of got worse, better or stayed the same.

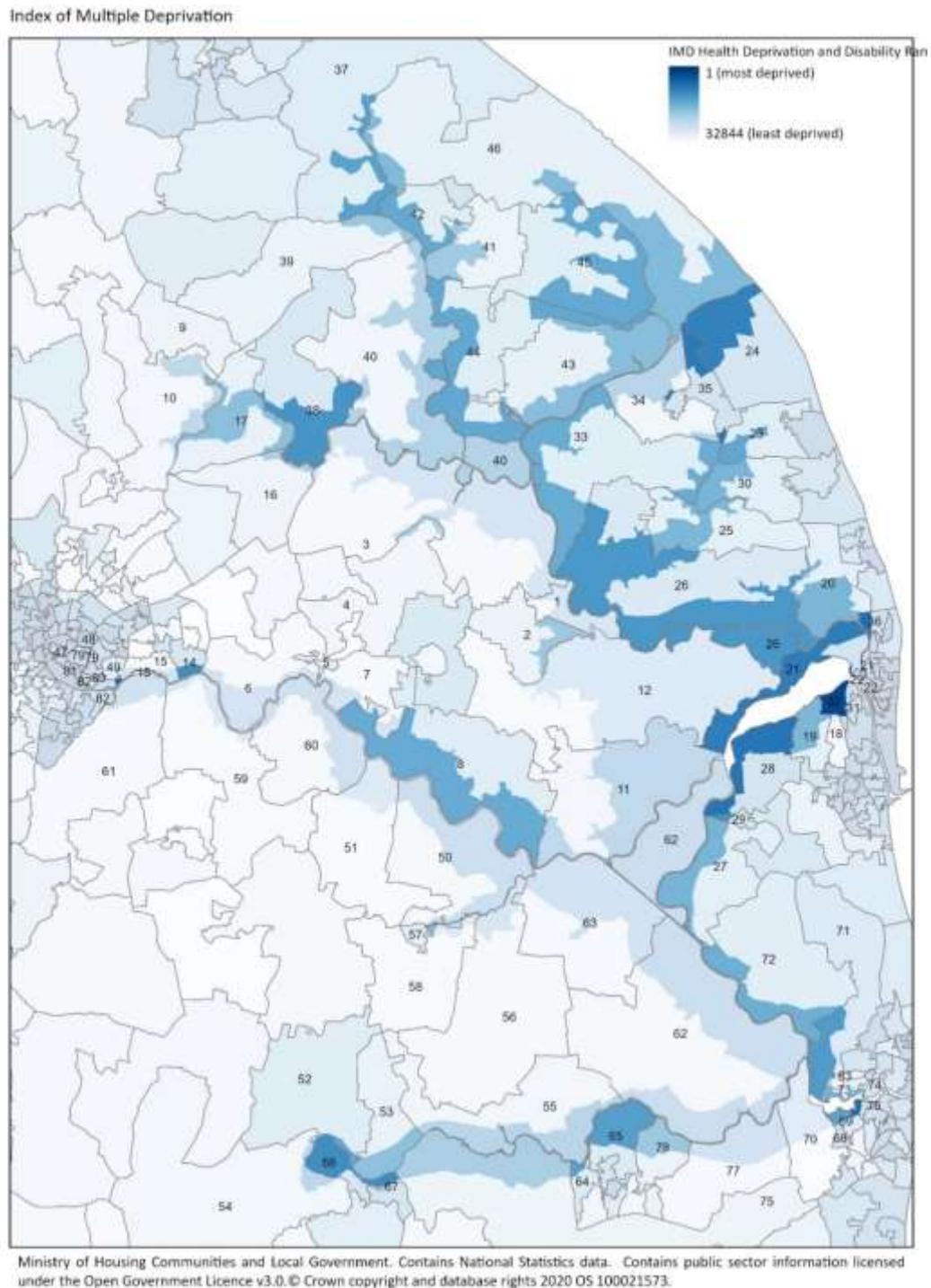
Index of Multiple Deprivation - 2019 vs. 2015 decile comparison



Ministry of Housing Communities and Local Government. Contains National Statistics data. Contains public sector information licensed under the Open Government Licence v3.0. © Crown copyright and database rights 2020 OS 100021573.

8. The Health Deprivation and Disability Domain

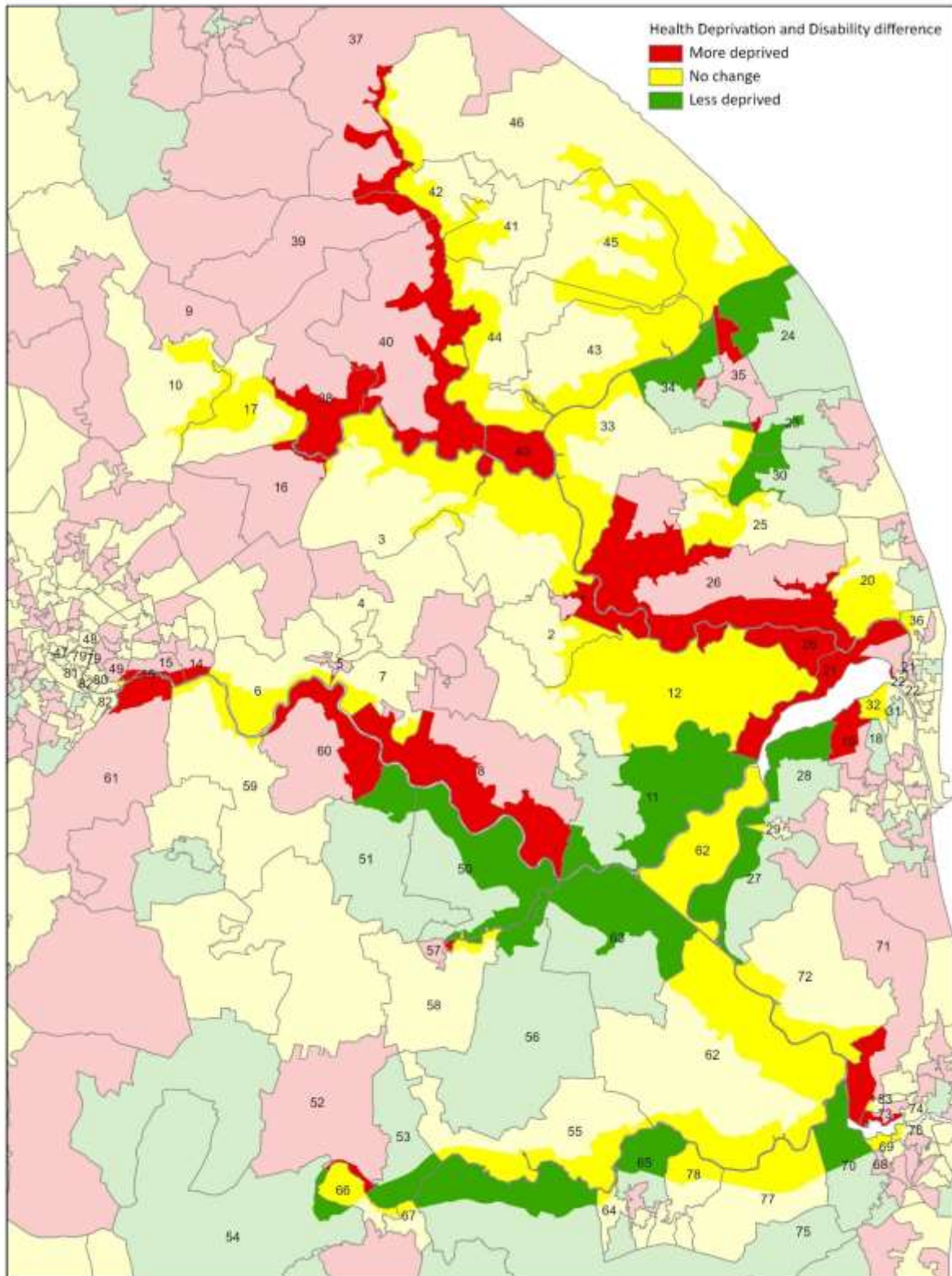
The **Health Deprivation and Disability** Domain measures the risk of premature death and the impairment of quality of life through poor physical or mental health. The domain measures morbidity, disability and premature mortality but not aspects of behaviour or environment that may be predictive of future health deprivation.



The map is lighter in shading generally in terms of this domain. There are a few areas that are darker. Again, the LSOA near to Great Yarmouth stands out as being darkest.

The following map compares the 2015 and 2019 data. As with other maps, this shows a mixture. It seems fairly equal proportion of areas have got worse, better or not changed.

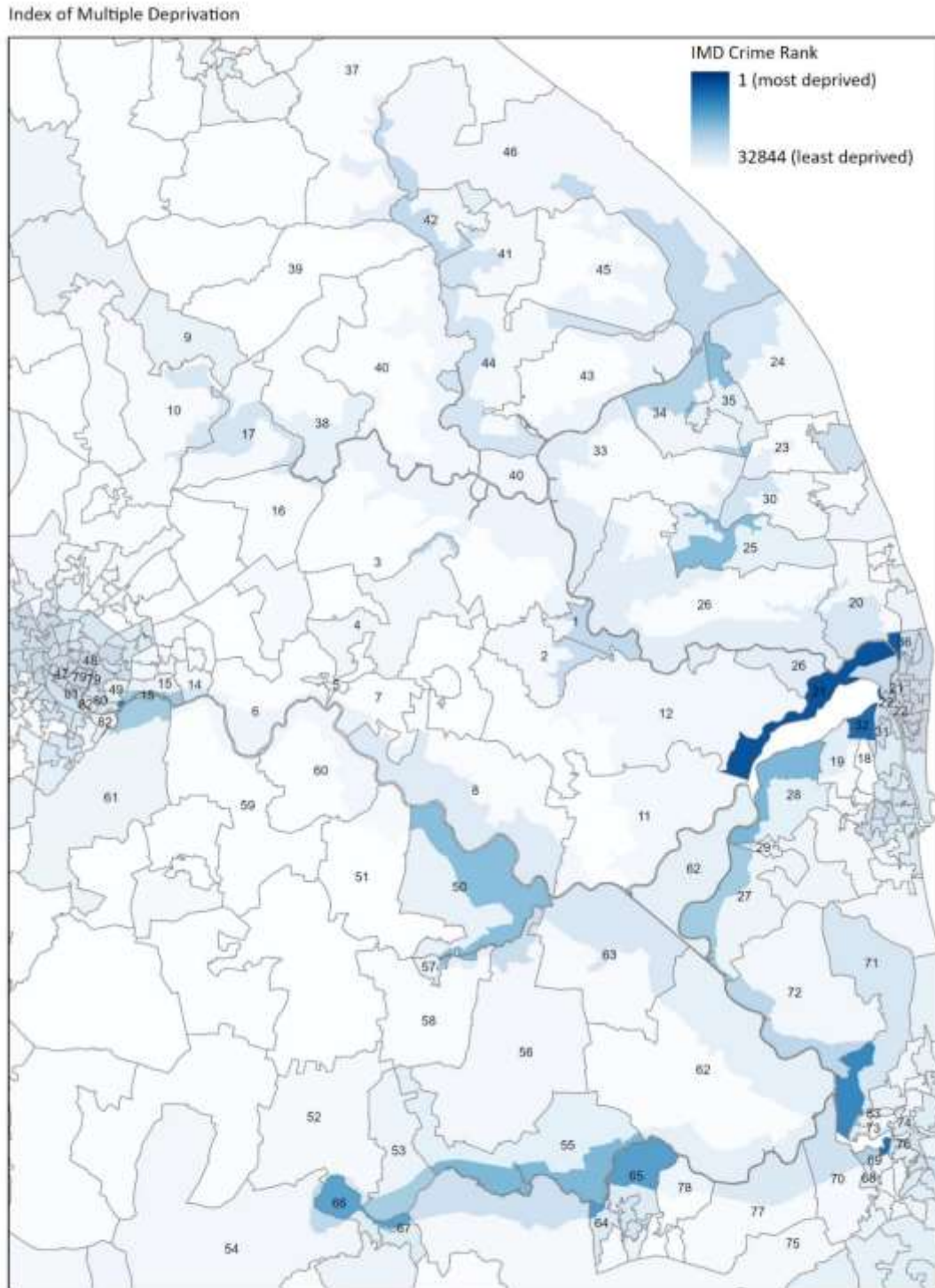
Index of Multiple Deprivation - 2019 vs. 2015 decile comparison



Ministry of Housing Communities and Local Government. Contains National Statistics data. Contains public sector information licensed under the Open Government Licence v3.0. © Crown copyright and database rights 2020 OS 100021573.

9. The Crime Domain

The **Crime** Domain measures the risk of personal and material victimisation at local level.

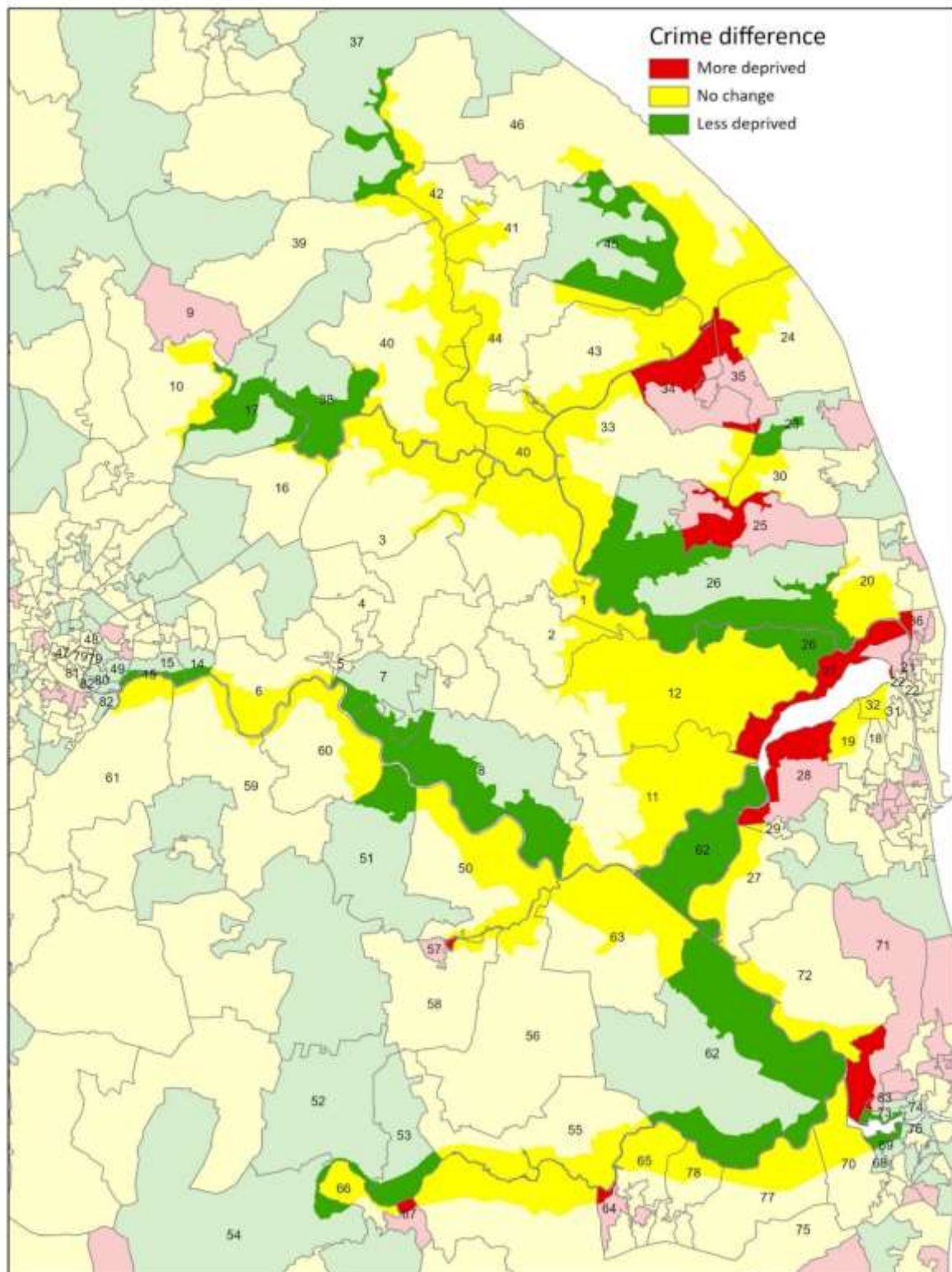


Ministry of Housing Communities and Local Government. Contains National Statistics data. Contains public sector information licensed under the Open Government Licence v3.0. © Crown copyright and database rights 2020 OS 100021573.

The Broads is a very light shade of blue. There are a few pockets of darker blue, showing more deprived. The LSOA north/west of Breydon Water (number 21) is the most deprived in the area.

The following map compares the 2015 and 2019 data.

Index of Multiple Deprivation - 2019 vs. 2015 decile comparison

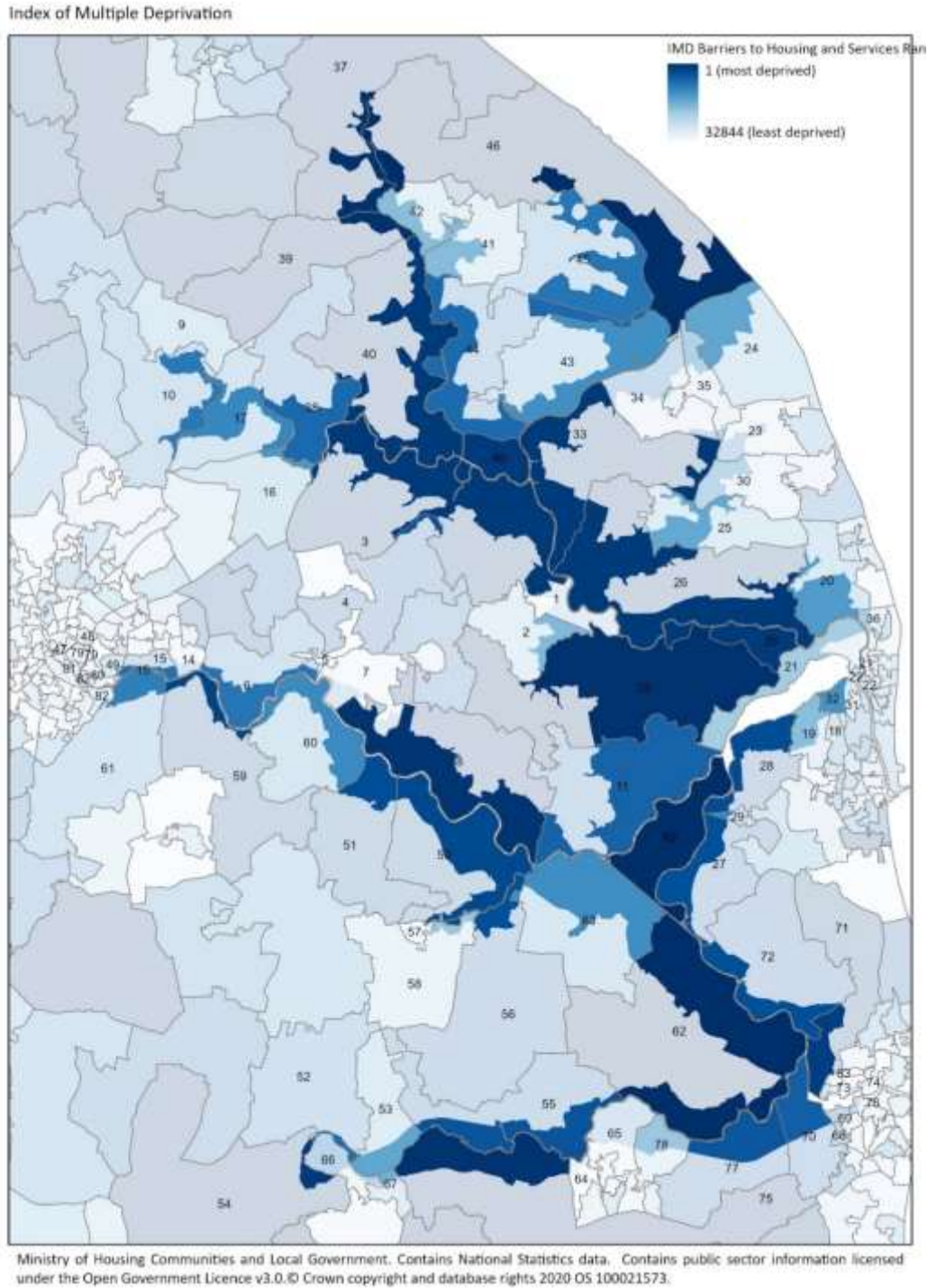


Ministry of Housing Communities and Local Government. Contains National Statistics data. Contains public sector information licensed under the Open Government Licence v3.0. © Crown copyright and database rights 2020 OS 100021573.

This comparison shows that most of the area has either got better or stayed the same with only a few areas getting worse.

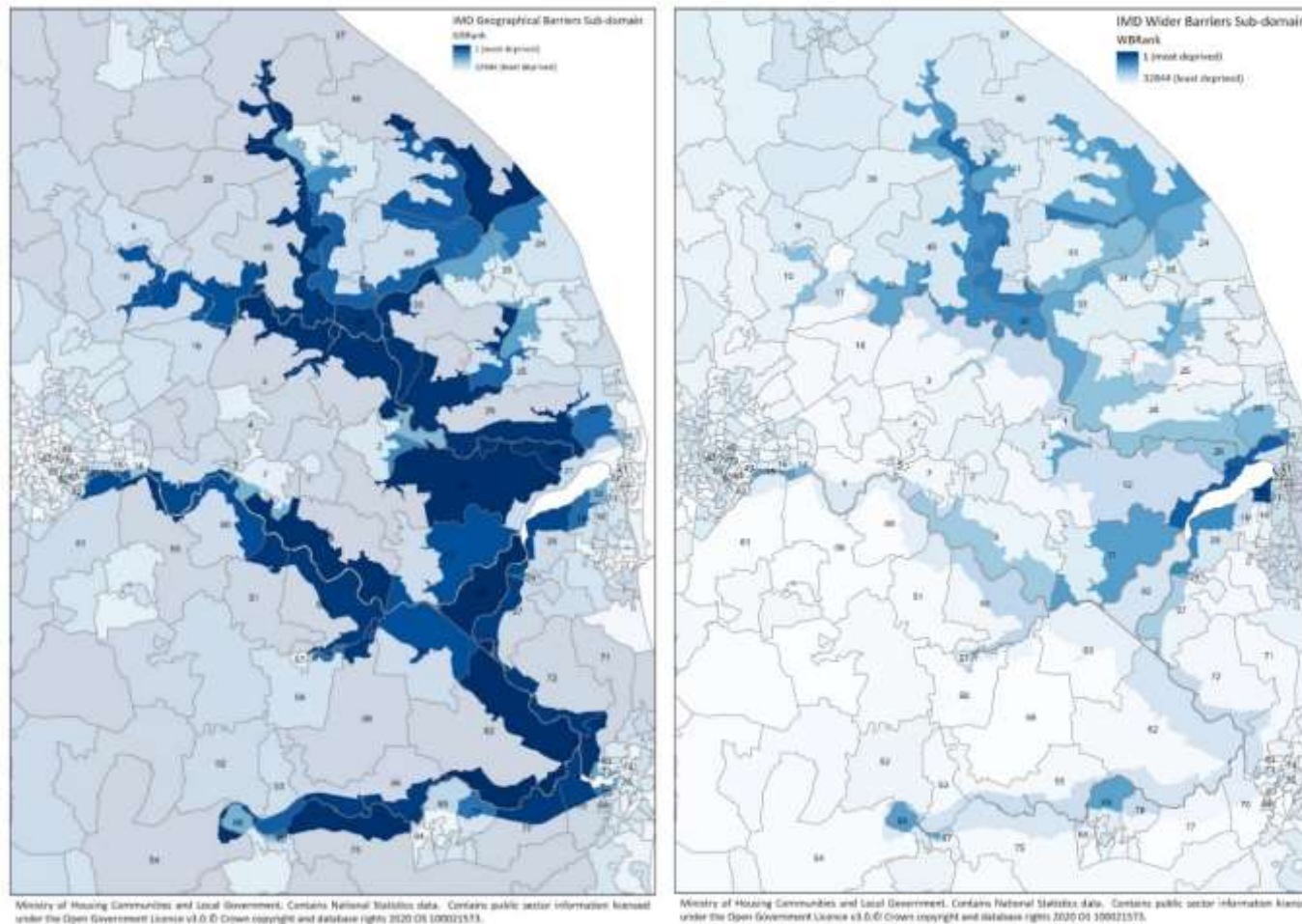
10. The Barriers to Housing and Services Domain

The **Barriers to Housing and Services** Domain measures the physical and financial accessibility of housing and local services. The indicators fall into two sub-domains: 'geographical barriers', which relate to the physical proximity of local services, and 'wider barriers' which includes issues relating to access to housing such as affordability.



The map shows that the vast majority of the area is dark blue, so most deprived in regards to this domain.

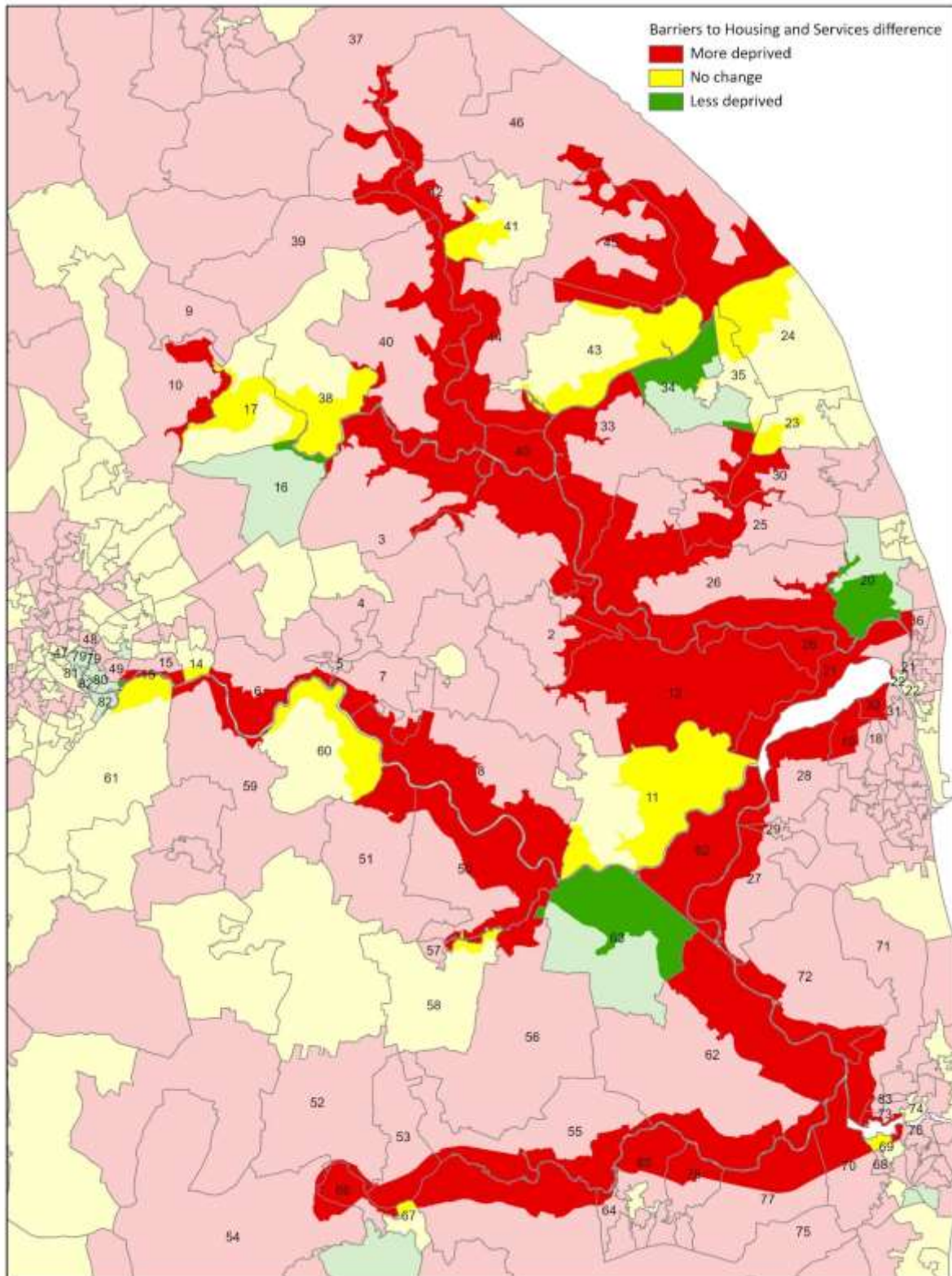
This domain has two sub domains. On the left is geographical barriers sub-domain and the right is wider barriers sub-domain.



The map on the left shows that the Broads is quite deprived in relation to geographical barriers. This could reflect the rural nature of the area with urban areas being lighter in colour. The map on the right shows wider barriers such as access to housing and affordability. The Broads is towards the light blue end of the spectrum showing that in general it is least deprived. Again, the LSOA near to Great Yarmouth is the most deprived.

The following map compares the 2015 and 2019 data. This map shows that most of the area has got more deprived.

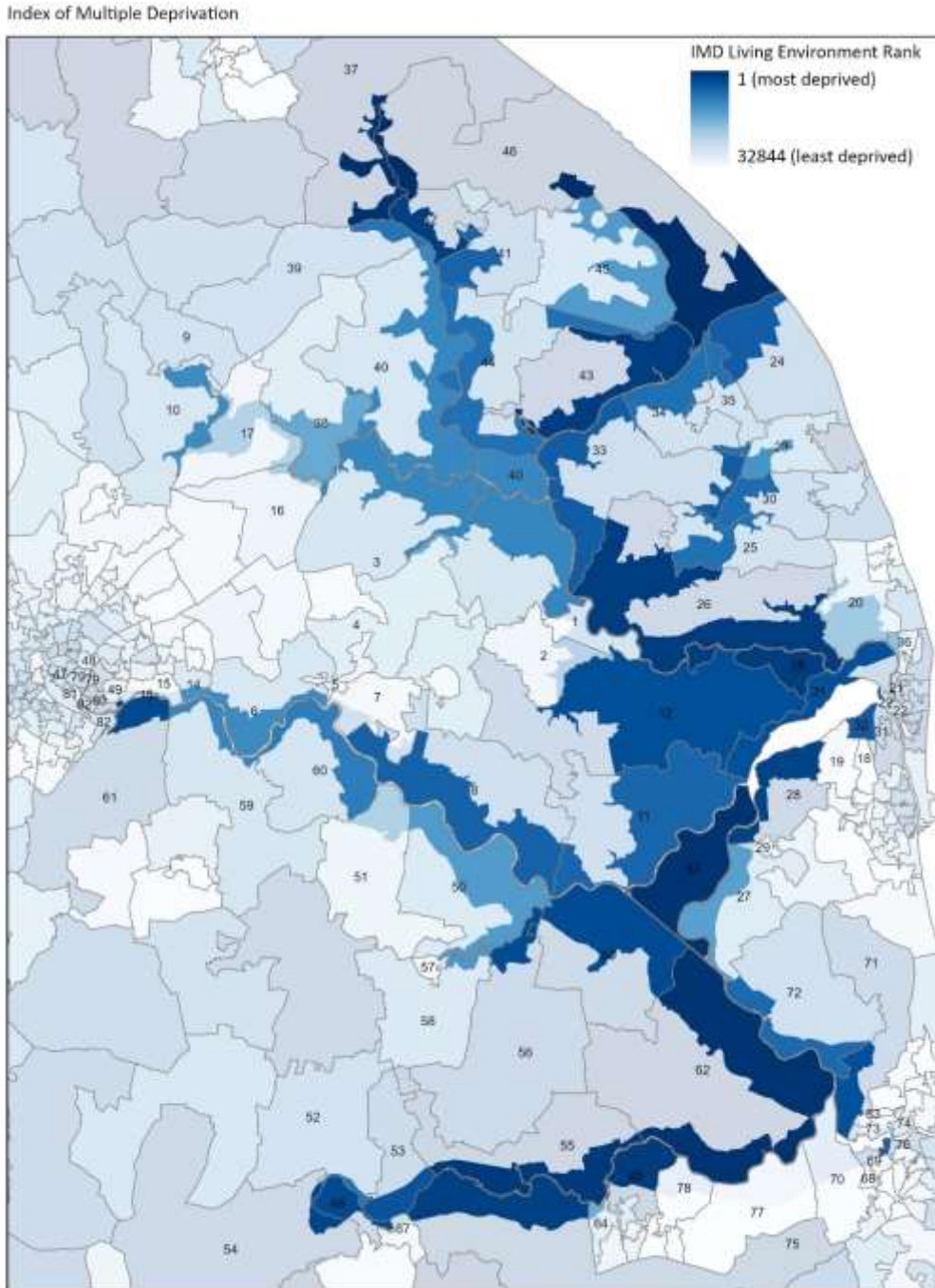
Index of Multiple Deprivation - 2019 vs. 2015 decile comparison



Ministry of Housing Communities and Local Government. Contains National Statistics data. Contains public sector information licensed under the Open Government Licence v3.0. © Crown copyright and database rights 2020 OS 100021573.

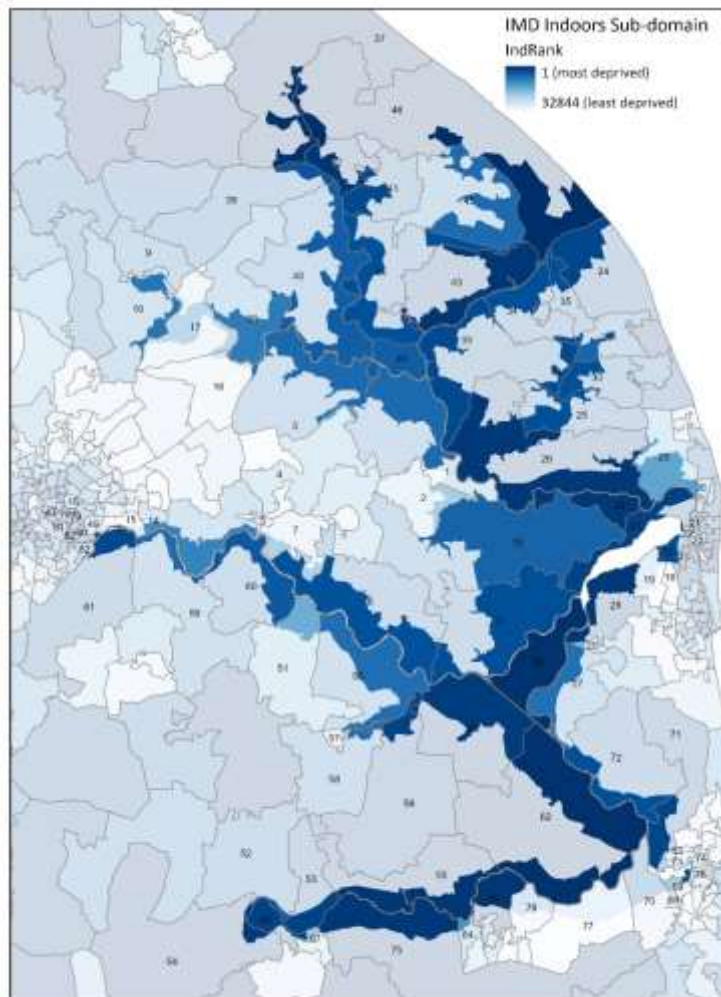
11. The Living Environment Deprivation Domain

The **Living Environment Deprivation** Domain measures the quality of the local environment. The indicators fall into two sub-domains. The ‘indoors’ living environment measures the quality of housing; while the ‘outdoors’ living environment contains measures of air quality and road traffic accidents.

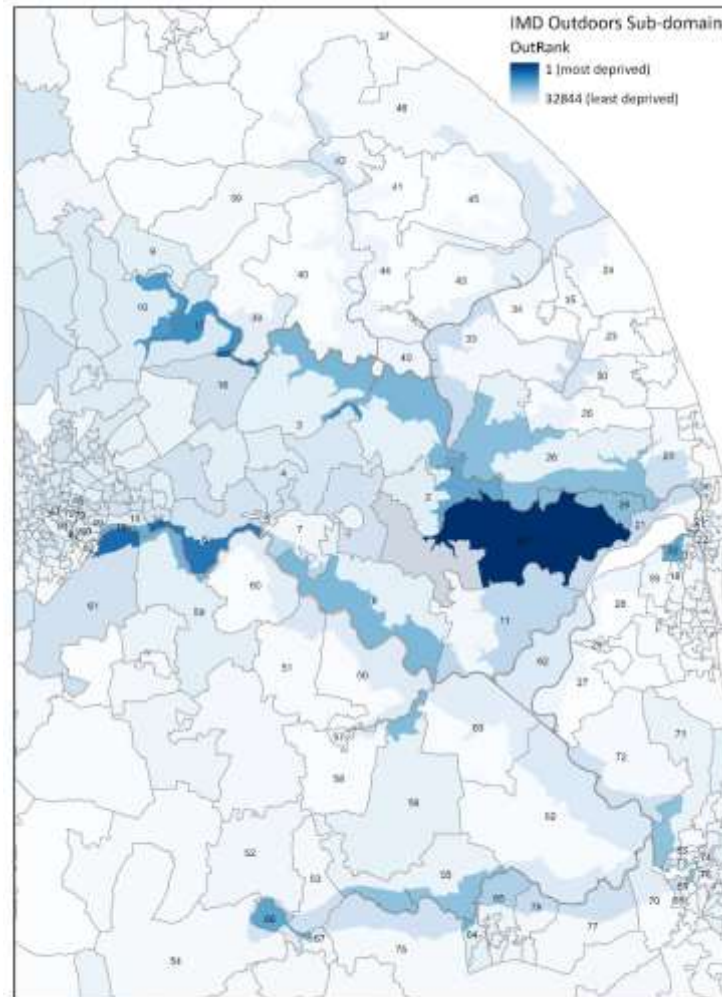


Ministry of Housing Communities and Local Government. Contains National Statistics data. Contains public sector information licensed under the Open Government Licence v3.0. © Crown copyright and database rights 2020 OS 100021573.

The map is generally darker blue in shading. There are pockets of particularly dark blue around the Broads.



Ministry of Housing Communities and Local Government. Contains National Statistics data. Contains public sector information licensed under the Open Government Licence v3.0 © Crown copyright and database rights 2020 OS 200021573.

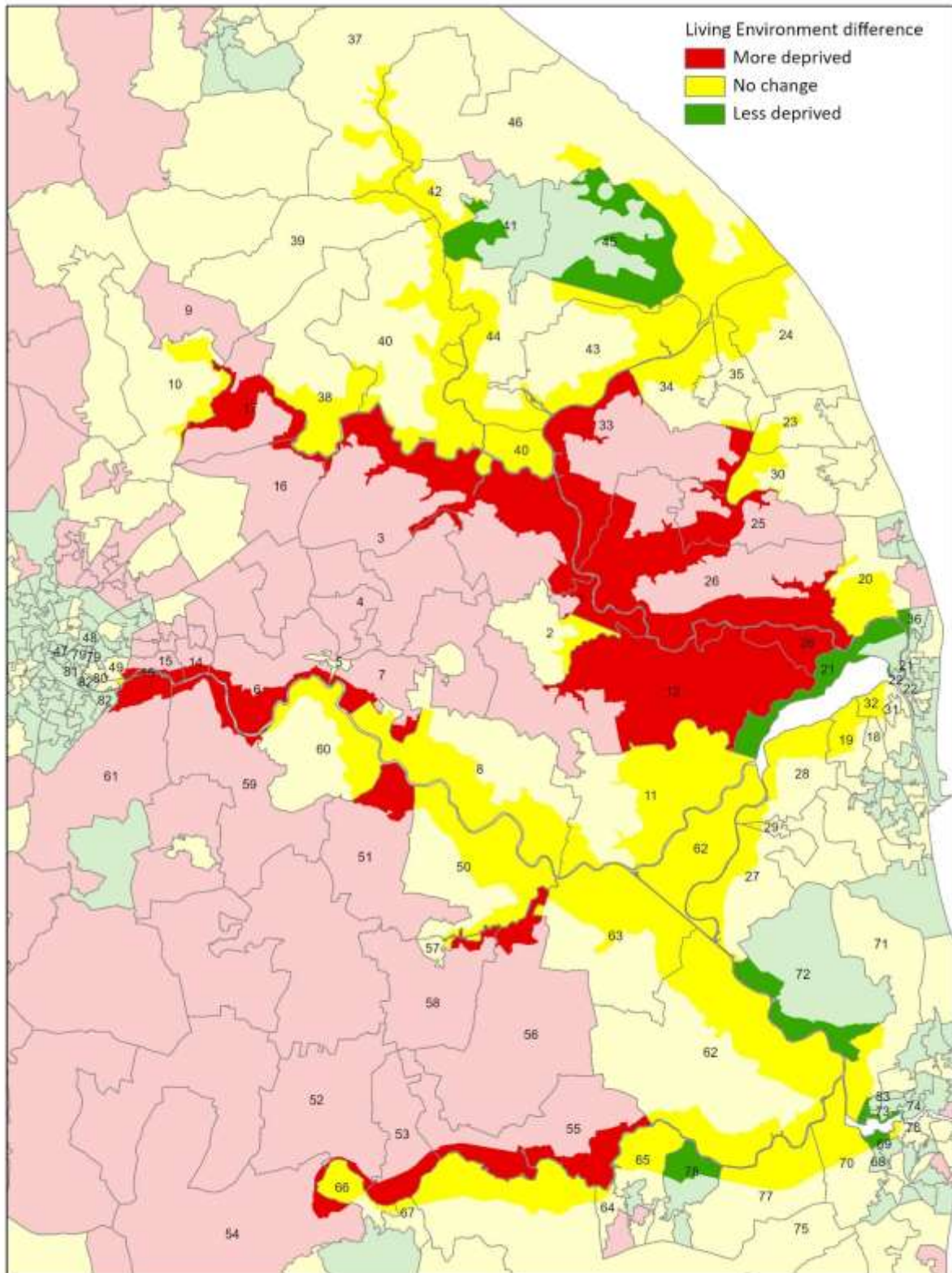


Ministry of Housing Communities and Local Government. Contains National Statistics data. Contains public sector information licensed under the Open Government Licence v3.0 © Crown copyright and database rights 2020 OS 200021573.

The map on the left shows indoors subdomain. This seems to paint a picture that housing quality in the Broads overall is quite poor (notwithstanding pockets of light blue). Whereas the map on the right, which shows outdoors subdomain, shows the entire area of the Broads as being amongst the least deprived in the country.

The following map compares the 2015 and 2019 data. This shows that only a few LSOA's have improved with the most either getting worse or not changing.

Index of Multiple Deprivation - 2019 vs. 2015 decile comparison



Ministry of Housing Communities and Local Government. Contains National Statistics data. Contains public sector information licensed under the Open Government Licence v3.0. © Crown copyright and database rights 2020 OS 100021573.

12. LSOA number 32

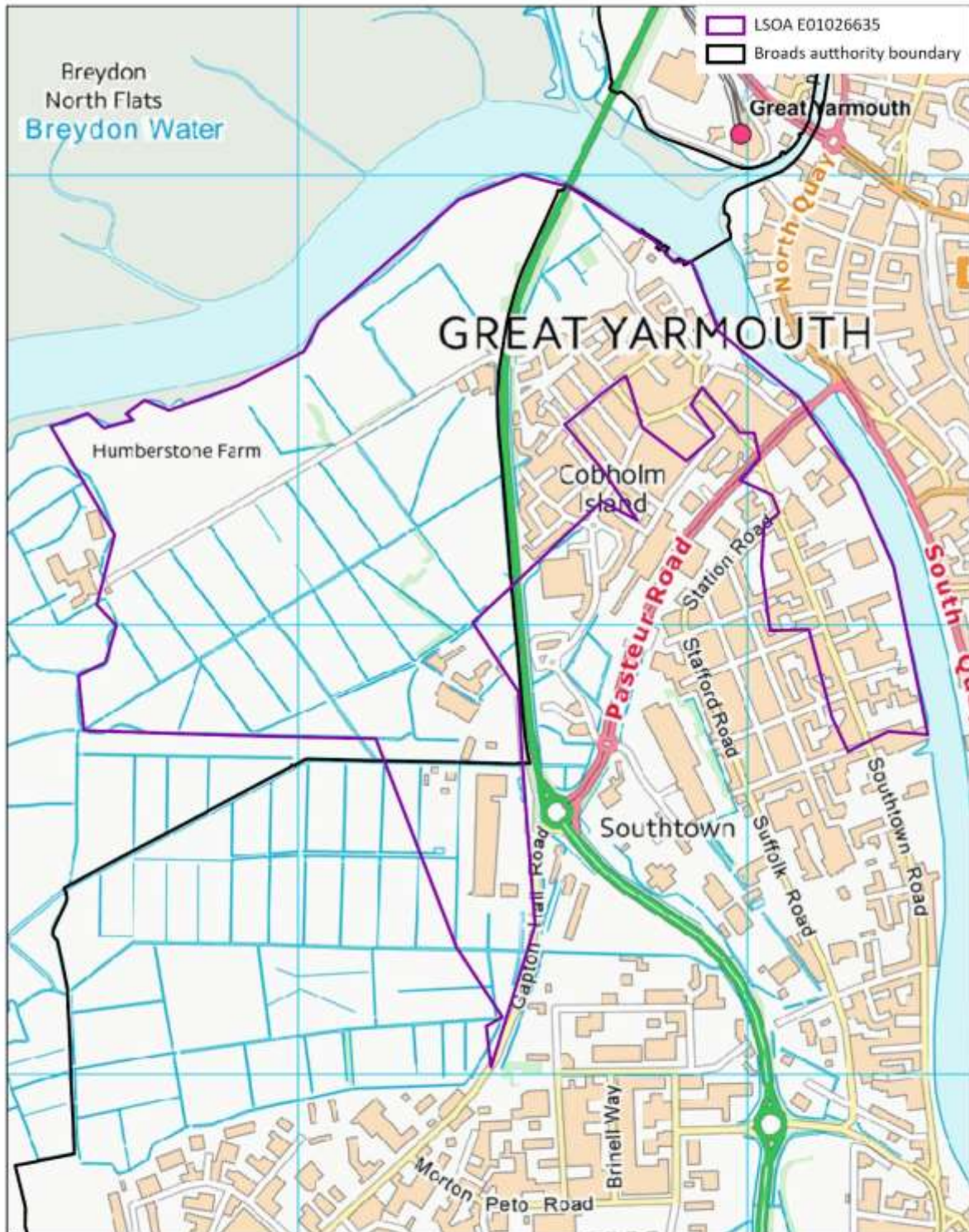
The maps tend to show that LSOA number 32 tends to be quite deprived under the majority of the domains. It's identification number is E01026635. The area is shown on the following maps. According to our calculations, only 3.56% of the population of this area is within the Broads.

We contacted Great Yarmouth Borough Council about this LSOA and how they, as the Local Authority for the area, seek to address issues relating to deprivation.

The [Neighbourhood Management structures](#) across the urban wards were designed as a way to address our more deprived urban statistics. The [Make it Happen](#) board covers Southtown, Cobholm, Halfway house and the Gapton traveller site. These structures were set up so that GYBC could support community activity, ideas and events which would help create a vibrant and cohesive place to live, as well as work alongside partners to get the best deal for local people. It is intended that the Make it Happen neighbourhood board will feed into the GYBC operational plan and the locality strategy. So resident's concerns and priorities inform future work not just led by GYBC but by the partners that make up the locality board. They are resourced by a Neighbourhood Manager who supports community groups and leads on partnership work to help residents get the best deal.

There have been some recent investments in this area:

- New £100K skate park in Cobholm (official opening on August 1st) funded by S106 and capital funds
- Business grants during Covid times to support Cobholm Community Centre who now run a Cobholm food bank from their building
- Community license (zero rent) for a community garden in Cobholm
- Hosting an Intern every summer for the last 9 years to work on engaging communities on flood resilience messaging – this work focussed on Cobholm especially.



Ministry of Housing Communities and Local Government. Contains National Statistics data. Contains public sector information licensed under the Open Government Licence v3.0. © GetMapping & Bluesky International 2020. Crown copyright and database rights 2020 OS 100021573. © Crown copyright and database rights 2021 Ordnance Survey 100021573. You are permitted to use this data solely to enable you to respond to, or interact with, the organisation that provided you with the data. You are not permitted to copy, sub-licence, distribute or sell any of this data to third parties in any form.



Ministry of Housing Communities and Local Government. Contains National Statistics data. Contains public sector information licensed under the Open Government Licence v3.0.© GetMapping & Bluesky International 2020. Crown copyright and database rights 2020 OS 100021573.

13. Conclusion

The results are mixed with the Broads Authority Executive Area being least deprived in relation to crime and health but is more deprived in relation to indoor living and

geographical barriers domains. The following table discusses the findings and indicates how the Local Plan can seek to address the domains.

Domain or Sub-domain	Action in the Local Plan
Income Deprivation Domain	The Local Plan will have an Economy section as well as a section on Tourism which relate to employment and could positively affect this domain.
Employment Deprivation Domain	
Children and Young People Sub-domain	The education authorities are not likely to require the Local Plan to enable schools or school extensions given the likely scale of growth in the Broads. But this will be confirmed as and when we understand the housing/residential moorings need for the Broads. It is important to note that the Broads Authority does have an education programme which seeks to enable children to experience the Broads and what it has to offer.
Adult Skills Sub-domain	The economy and employment sections of the Local Plan could be of relevance, but no specific actions relating to adult skills are proposed within the Local Plan. As an Authority, we employ apprentices and our Water Mills and Marshes scheme seeks to train and educate in traditional skills. We also have a team of volunteers who undertake a variety of roles from rangers, data analysis to land management.
Health Domain	There is not likely to be the need for specific health related facilities given the likely scale of growth in the Broads. But this will be confirmed as and when we understand the housing/residential moorings need for the Broads. There will continue to be a policy that seeks new development to enable a healthy lifestyle. Building for a Healthy Life guidance will be of importance. Any Norfolk-wide work relating to health under the auspices of the Norfolk Strategic Framework will also be addressed in the Local Plan.
Crime Domain	As the area is least deprived on this topic, other than general design policies, no specific action is required. That being said, we always consult Suffolk

Domain or Sub-domain	Action in the Local Plan
	and Norfolk Police on the Local Plan and will seek to address their concerns or comments.
Geographical Barriers Sub-domain	It is important to note that the rural parts of settlements tend to be in the Broads with the built up areas outside of the Broads. So therefore many facilities and services in the area are outside of the Broads. We will ensure, through our policies like development boundaries, site allocations and residential moorings policies, that new homes will be in areas with good access to services and facilities. The Local Plan will have a policy on pubs. There is likely to be no need for education or health facilities in the Local Plan. The Local Plan will seek to protect the retail areas within the Broads.
Wider Barriers Sub-domain	The Local Plan will address housing need and residential moorings need and have a policy on affordable housing.
Indoors Sub-domain	The Local Plan will have policies that enable improvements or changes to dwellings which could positively affect this domain.
Outdoors Sub-domain	No specific action required as the area is amongst the least deprived under this domain.

In most cases LSOAs are part in the Broads and part outside of the Broads, so in planning terms, it will be for other Local Planning Authorities to consider actions to benefit the communities in the LSOAs as well as the Broads Authority through the actions stated in the table above.

It is also important to note that the Broads Authority does not exercise functions which Councils do, such as community, education and housing functions. So there is a role for the District and County Councils in addressing deprivation. Furthermore, other partners have a responsibility for and expertise in addressing other domains such as CCGs and NHS England in relation to health or the Local Enterprise Partnership in relation to employment. Addressing deprivation needs a collaborative approach.

Appendix 1: The estimated population of the Broads in each LSOA

LSOA11CD	OA11CD	District	Dwelling Count within BA (calculated using GIS in June 2021)	Total Dwelling Count OA (calculated using GIS in June 2021)	% within BA (2021)	Total OA population from Census 2011	2021 Population in the Broads part of the OA (Calculated by applying BA Av Household Size of 1.74 to dwelling count within BA)	% of LSOA population in the Broads from Census 2011.
E01026497	E00134648	Broadland	0	152	0.00	297	0	0.90%
	E00134652	Broadland	0	137	0.00	249	0	
	E00134653	Broadland	6	163	3.68	320	10.44	
	E00134654	Broadland	0	139	0.00	295	0	
E01026498	E00134649	Broadland	0	246	0.00	289	0	0.00%
	E00134655	Broadland	0	106	0.00	212	0	
	E00134656	Broadland	0	179	0.00	295	0	
E01026504	E00134697	Broadland	11	182	6.04	431	19.14	5.00%
	E00134699	Broadland	2	147	1.36	350	3.48	
	E00134700	Broadland	3	156	1.92	352	5.22	
	E00134701	Broadland	28	174	16.09	399	48.72	
E01026505	E00134698	Broadland	0	181	0.00	414	0	0.00%
E01026508	E00134705	Broadland	0	138	0.00	340	0	0.00%
E01026509	E00134702	Broadland	6	146	4.11	308	10.44	2.82%
	E00134714	Broadland	0	132	0.00	275	0	
	E00134718	Broadland	10	176	5.68	404	17.4	
E01026510	E00134706	Broadland	81	267	30.34	450	140.94	12.60%
	E00134707	Broadland	9	146	6.16	270	15.66	
	E00134708	Broadland	0	176	0.00	324	0	
	E00134719	Broadland	2	113	1.77	226	3.48	
E01026511	E00134715	Broadland	26	94	27.66	229	45.24	9.61%
	E00134716	Broadland	0	101	0.00	228	0	
	E00134717	Broadland	18	125	14.40	276	31.32	
	E00134720	Broadland	9	101	8.91	227	15.66	
E01026516	E00134744	Broadland	0	135	0.00	311	0	0.00%
E01026517	E00134739	Broadland	58	125	46.40	232	100.92	11.93%
	E00134741	Broadland	11	109	10.09	252	19.14	
	E00134747	Broadland	1	174	0.57	404	1.74	
	E00134748	Broadland	4	151	2.65	191	6.96	
E01026538	E00134851	Broadland	17	192	8.85	361	29.58	8.77%
	E00134856	Broadland	59	173	34.10	409	102.66	
	E00134857	Broadland	0	159	0.00	339	0	
	E00134858	Broadland	3	241	1.24	459	5.22	
E01026539	E00134850	Broadland	2	201	1.00	436	3.48	4.84%
	E00134854	Broadland	1	125	0.80	291	1.74	
	E00134855	Broadland	26	137	18.98	316	45.24	
E01026575	E00135039	Broadland	9	202	4.46	286	15.66	2.95%
	E00169823	Broadland	0	108	0.00	244	0	
E01026577	E00135028	Broadland	8	204	3.92	363	13.92	19.48%
	E00135041	Broadland	0	139	0.00	285	0	
	E00135042	Broadland	111	267	41.57	415	193.14	
E01026579	E00135057	Broadland	1	62	1.61	163	1.74	1.07%
E01026580	E00135058	Broadland	41	66	62.12	134	71.34	29.24%
	E00135059	Broadland	56	113	49.56	231	97.44	
	E00135060	Broadland	3	134	2.24	230	5.22	
E01026581	E00135067	GYBC	4	127	3.15	275	6.96	2.53%
E01026582	E00135084	GYBC	6	121	4.96	297	10.44	3.52%
E01026593	E00135140	GYBC	39	81	48.15	272	67.86	24.95%
E01026596	E00135159	GYBC	7	165	4.24	307	12.18	3.97%
E01026597	E00135146	GYBC	0	154	0.00	175	0	0.00%
E01026605	E00135198	GYBC	1	141	0.71	436	1.74	0.40%
E01026606	E00135205	GYBC	61	121	50.41	247	106.14	13.22%
	E00135208	GYBC	0	155	0.00	289	0	
	E00135209	GYBC	0	133	0.00	267	0	
E01026608	E00135211	GYBC	1	202	0.50	308	1.74	13.13%
	E00135212	GYBC	59	178	33.15	407	102.66	

LSOA11CD	OA11CD	District	Dwelling Count within BA (calculated using GIS in June 2021)	Total Dwelling Count OA (calculated using GIS in June 2021)	% within BA (2021)	Total OA population from Census 2011	2021 Population in the Broads part of the OA (Calculated by applying BA Av Household Size of 1.74 to dwelling count within BA)	% of LSOA population in the Broads from Census 2011.
	E00135214	GYBC	20	127	15.75	358	34.8	
	E00135215	GYBC	18	146	12.33	226	31.32	
E01026609	E00135216	GYBC	22	91	24.18	266	38.28	38.60%
	E00135217	GYBC	52	160	32.50	194	90.48	
	E00135218	GYBC	113	155	72.90	383	196.62	
E01026613	E00135240	GYBC	0	109	0.00	330	0	9.00%
	E00135251	GYBC	12	151	7.95	260	20.88	
	E00135252	GYBC	31	120	25.83	242	53.94	
E01026614	E00135243	GYBC	0	128	0.00	249	0	14.75%
	E00135248	GYBC	12	222	5.41	352	20.88	
	E00135250	GYBC	51	147	34.69	283	88.74	
	E00169839	GYBC	35	291	12.03	272	60.9	
E01026616	E00135247	GYBC	0	146	0.00	304	0	0.00%
E01026629	E00135319	GYBC	46	129	35.66	282	80.04	28.38%
E01026634	E00135340	GYBC	0	131	0.00	365	0	0.00%
E01026635	E00135337	GYBC	0	164	0.00	302	0	3.56%
	E00135347	GYBC	0	138	0.00	336	0	
	E00169836	GYBC	17	179	9.50	192	29.58	
E01026636	E00135364	GYBC	88	244	36.07	554	153.12	16.65%
	E00135365	GYBC	0	130	0.00	391	0	
	E00135366	GYBC	8	167	4.79	295	13.92	
	E00135367	GYBC	26	146	17.81	336	45.24	
	E00135368	GYBC	59	95	62.11	315	102.66	
E01026637	E00135353	GYBC	0	151	0.00	260	0	13.30%
	E00135355	GYBC	61	138	44.20	332	106.14	
	E00135360	GYBC	0	343	0.00	206	0	
E01026638	E00135357	GYBC	0	116	0.00	164	0	0.40%
	E00135358	GYBC	1	118	0.85	274	1.74	
E01026640	E00135371	GYBC	0	128	0.00	212	0	11.60%
	E00135376	GYBC	26	110	23.64	178	45.24	
E01026740	E00135938	North Norfolk	66	168	39.29	243	114.84	23.41%
	E00135944	North Norfolk	1	148	0.68	255	1.74	
E01026744	E00135969	North Norfolk	56	88	63.64	249	97.44	34.01%
	E00135970	North Norfolk	5	136	3.68	319	8.7	
	E00135974	North Norfolk	111	192	57.81	312	193.14	
E01026767	E00136099	North Norfolk	57	123	46.34	172	99.18	23.67%
	E00136100	North Norfolk	0	116	0.00	247	0	
E01026769	E00136103	North Norfolk	67	223	30.04	250	116.58	33.52%
	E00136104	North Norfolk	93	181	51.38	254	161.82	
	E00136106	North Norfolk	0	136	0.00	255	0	
	E00136107	North Norfolk	101	210	48.10	467	175.74	
	E00136108	North Norfolk	26	144	18.06	264	45.24	
E01026774	E00136140	North Norfolk	10	258	3.88	271	17.4	4.98%
	E00136149	North Norfolk	6	155	3.87	288	10.44	
E01026776	E00136142	North Norfolk	27	79	34.18	307	46.98	20.13%
	E00136147	North Norfolk	43	283	15.19	298	74.82	
E01026783	E00136203	North Norfolk	16	122	13.11	336	27.84	17.85%
	E00136204	North Norfolk	39	166	23.49	321	67.86	
	E00136206	North Norfolk	3	99	3.03	297	5.22	
	E00136207	North Norfolk	73	209	34.93	323	127.02	
E01026784	E00136195	North Norfolk	15	122	12.30	156	26.1	28.28%
	E00136202	North Norfolk	50	139	35.97	244	87	
E01026785	E00136198	North Norfolk	6	174	3.45	348	10.44	3.16%
	E00136199	North Norfolk	6	165	3.64	312	10.44	
E01026786	E00136209	North Norfolk	3	127	2.36	256	5.22	1.73%
	E00136210	North Norfolk	0	133	0.00	214	0	
	E00136211	North Norfolk	1	184	0.54	360	1.74	
	E00136214	North Norfolk	7	86	8.14	278	12.18	

LSOA11CD	OA11CD	District	Dwelling Count within BA (calculated using GIS in June 2021)	Total Dwelling Count OA (calculated using GIS in June 2021)	% within BA (2021)	Total OA population from Census 2011	2021 Population in the Broads part of the OA (Calculated by applying BA Av Household Size of 1.74 to dwelling count within BA)	% of LSOA population in the Broads from Census 2011.
E01026823	E00136395	Norwich	0	267	0.00	317	0	0.00%
	E00136412	Norwich	0	227	0.00	374	0	
	E00136423	Norwich	0	185	0.00	204	0	
	E00136424	Norwich	0	206	0.00	313	0	
	E00173827	Norwich	0	251	0.00	215	0	
E01026848	E00136563	Norwich	0	82	0.00	167	0	0.00%
	E00136565	Norwich	0	158	0.00	226	0	
	E00136567	Norwich	0	140	0.00	142	0	
E01026849	E00136559	Norwich	40	170	23.53	364	69.6	19.12%
E01026879	E00136717	South Norfolk	6	184	3.26	284	10.44	22.40%
	E00136719	South Norfolk	71	185	38.38	314	123.54	
E01026880	E00136718	South Norfolk	16	120	13.33	215	27.84	12.95%
E01026892	E00136785	South Norfolk	4	93	4.30	194	6.96	3.59%
E01026893	E00136781	South Norfolk	4	154	2.60	407	6.96	52.11%
	E00136784	South Norfolk	167	248	67.34	164	290.58	
E01026894	E00136792	South Norfolk	6	126	4.76	198	10.44	5.27%
E01026898	E00136815	South Norfolk	22	68	32.35	192	38.28	18.69%
	E00136816	South Norfolk	31	193	16.06	225	53.94	
	E00136817	South Norfolk	27	184	14.67	157	46.98	
	E00136818	South Norfolk	1	140	0.71	180	1.74	
E01026899	E00136821	South Norfolk	10	106	9.43	373	17.4	4.66%
E01026911	E00136884	South Norfolk	16	167	9.58	488	27.84	5.70%
E01026912	E00136882	South Norfolk	10	157	6.37	291	17.4	4.07%
	E00136886	South Norfolk	4	201	1.99	308	6.96	
E01026929	E00136976	South Norfolk	31	166	18.67	297	53.94	12.76%
	E00136977	South Norfolk	5	85	5.88	194	8.7	
E01026930	E00136979	South Norfolk	12	185	6.49	296	20.88	3.48%
	E00136981	South Norfolk	5	143	3.50	135	8.7	
	E00136982	South Norfolk	1	94	1.06	397	1.74	
	E00136983	South Norfolk	6	73	8.22	372	10.44	
E01026937	E00137016	South Norfolk	15	217	6.91	304	26.1	5.40%
	E00137017	South Norfolk	0	217	0.00	179	0	
E01026943	E00137043	South Norfolk	0	60	0.00	279	0	7.54%
	E00137044	South Norfolk	14	133	10.53	324	24.36	
	E00137045	South Norfolk	16	126	12.70	301	27.84	
	E00137046	South Norfolk	30	175	17.14	301	52.2	
	E00137052	South Norfolk	1	51	1.96	202	1.74	
E01026944	E00137047	South Norfolk	9	53	16.98	198	15.66	6.69%
	E00137048	South Norfolk	23	126	18.25	372	40.02	
	E00137050	South Norfolk	3	198	1.52	340	5.22	
E01030224	E00154146	East Suffolk	32	131	24.43	124	55.68	44.90%
E01030225	E00154141	East Suffolk	53	180	29.44	183	92.22	12.49%
	E00154142	East Suffolk	0	121	0.00	460	0	
	E00154143	East Suffolk	22	129	17.05	402	38.28	
E01030230	E00154182	East Suffolk	51	176	28.98	298	88.74	25.85%
	E00154191	East Suffolk	49	136	36.03	375	85.26	
E01030231	E00154190	East Suffolk	3	150	2.00	274	5.22	1.35%
	E00154195	East Suffolk	0	140	0.00	112	0	
E01030234	E00154199	East Suffolk	0	125	0.00	298	0	0.00%
E01030235	E00154208	East Suffolk	15	145	10.34	413	26.1	6.32%
E01030237	E00173910	East Suffolk	1	124	0.81	302	1.74	0.58%
E01030259	E00154344	East Suffolk	21	73	28.77	118	36.54	30.97%
E01030260	E00154345	East Suffolk	5	105	4.76	253	8.7	4.11%
	E00154346	East Suffolk	9	102	8.82	219	15.66	
	E00173915	East Suffolk	0	44	0.00	121	0	
E01030268	E00154374	East Suffolk	1	133	0.75	245	1.74	0.71%
E01030269	E00154390	East Suffolk	69	125	55.20	279	120.06	50.68%
	E00154392	East Suffolk	133	133	100.00	232	231.42	

LSOA11CD	OA11CD	District	Dwelling Count within BA (calculated using GIS in June 2021)	Total Dwelling Count OA (calculated using GIS in June 2021)	% within BA (2021)	Total OA population from Census 2011	2021 Population in the Broads part of the OA (Calculated by applying BA Av Household Size of 1.74 to dwelling count within BA)	% of LSOA population in the Broads from Census 2011.
	E00154401	East Suffolk	31	132	23.48	289	53.94	
E01030270	E00154388	East Suffolk	5	168	2.98	265	8.7	12.94%
	E00154391	East Suffolk	42	134	31.34	367	73.08	
E01030286	E00154479	East Suffolk	16	97	16.49	364	27.84	19.20%
	E00154480	East Suffolk	42	89	47.19	298	73.08	
	E00154486	East Suffolk	31	64	48.44	145	53.94	
E01030289	E00154492	East Suffolk	48	148	32.43	211	83.52	34.64%
	E00154499	East Suffolk	37	191	19.37	216	64.38	
E01030293	E00154516	East Suffolk	0	178	0.00	322	0	0.00%
	E00154518	East Suffolk	0	194	0.00	327	0	
E01030294	E00154530	East Suffolk	1	126	0.79	317	1.74	0.55%
E01033438	E00136547	Norwich	0	122	0.00	302	0	0.00%
	E00136548	Norwich	0	262	0.00	271	0	
	E00136550	Norwich	0	144	0.00	154	0	
	E00136551	Norwich	0	298	0.00	252	0	
	E00136566	Norwich	0	143	0.00	213	0	
	E00136572	Norwich	0	379	0.00	259	0	
E01033439	E00136543	Norwich	1	553	0.18	298	1.74	0.27%
	E00136549	Norwich	0	305	0.00	357	0	
E01033440	E00173858	Norwich	0	626	0.00	352	0	0.00%
E01033441	E00173851	Norwich	0	130	0.00	211	0	1.96%
	E00173852	Norwich	6	241	2.49	140	10.44	
	E00173853	Norwich	0	133	0.00	258	0	
	E00173854	Norwich	0	157	0.00	330	0	
	E00173860	Norwich	13	142	9.15	449	22.62	
	E00173861	Norwich	0	131	0.00	295	0	
			3729	31131		56474	6488.46	

* The total population in this table is different to that of the 2011 Census. This is a reflection that we are applying the average household density across the Broads to each number of dwellings in the BA part of an OA. However, the table gives an indication of where the population of the Broads lives, which is the purpose of the exercise.