

Farming Methods and Machinery Event 2017



Agenda



Time	What	Who
10:00 - 10:15	Water sensitive farming introduction	Neil Punchard
10:15 - 10:55	Cultivations – cover crops and row crops	Philip Wright
10:55 - 11:25	A machinery policy for healthier soils	Dick Godwin
11:25 - 11:45	CTF – practical steps in arable and veg.	Tim Chamen
11:45 - 12:00	Comfort break	All
12:00 - 12:20	Sustainable maize growing	Stephen Temple
12:20 - 12:40	Wensum DTC – reduced cultivations	Richard Cooper
12:40 - 13:00	Salle Farms update	Poul Hovesen
13:00 - 13:30	Lunch	All
13:45 - 14:30	Soil pit and cover crops (trailer ride)	Philip Wright + Richard Cooper
14:30 - 15:00	Tramline management	Robert Camps + Ian Skinner



**A clear solution
for farmers**
CATCHMENT SENSITIVE FARMING



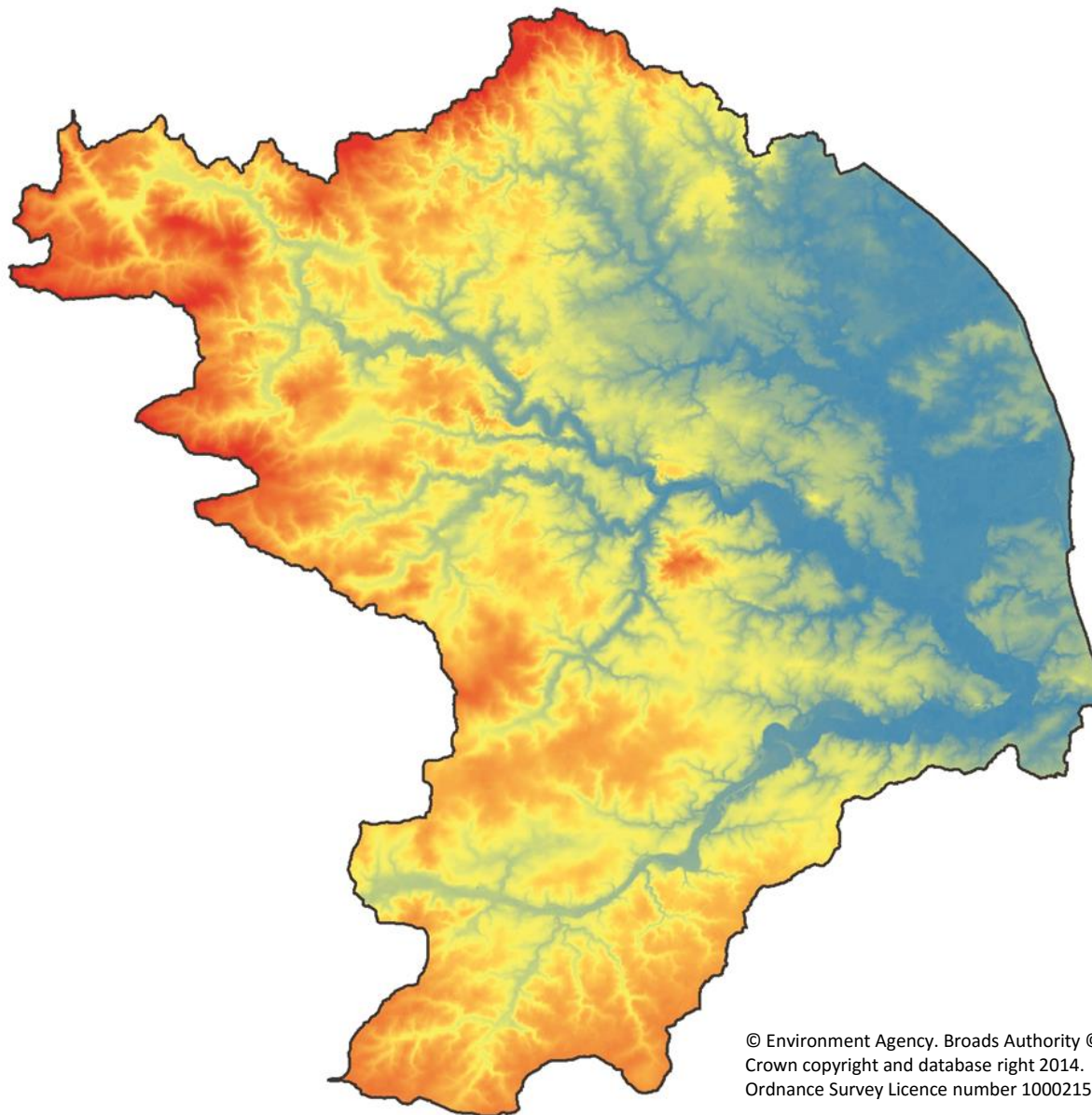
Farming Methods and Machinery Event 2017



Farming Methods and Machinery Event

15 November 2017

Neil Punchard



© Environment Agency. Broads Authority ©
Crown copyright and database right 2014.
Ordnance Survey Licence number 100021573.



The Broads National Park



Broadland
Catchment
Partnership



A breathing space for the cure of souls
Ted Ellis, Naturalist



The economic impact of the Broads to the local economy in 2013 was **£786 million** with over **8 million visitors** per year



19% of UK designated species
in 0.4% of UK area

The River Wensum and Norfolk Valley Fens Special Areas of Conservation

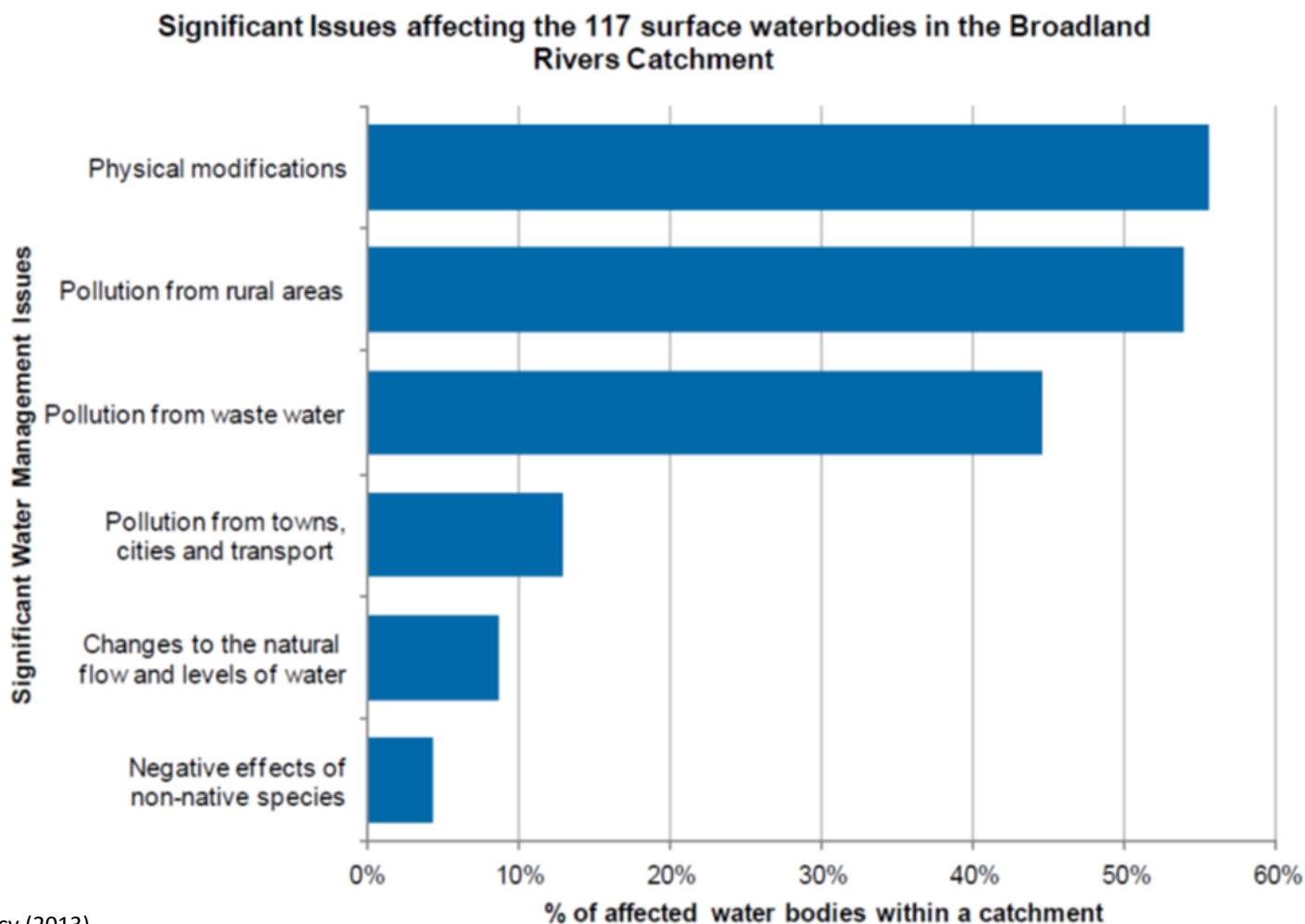


Broadland
Catchment
Partnership



- **90% of water bodies fail** to achieve Water Framework Directive Good Ecological Status (105 of 117)

EA Challenges and Choices: Broadland Rivers Catchment 2013



Broadland Rivers Catchment Plan

A strategic plan connecting local communities, organisations and businesses with the management of land and water



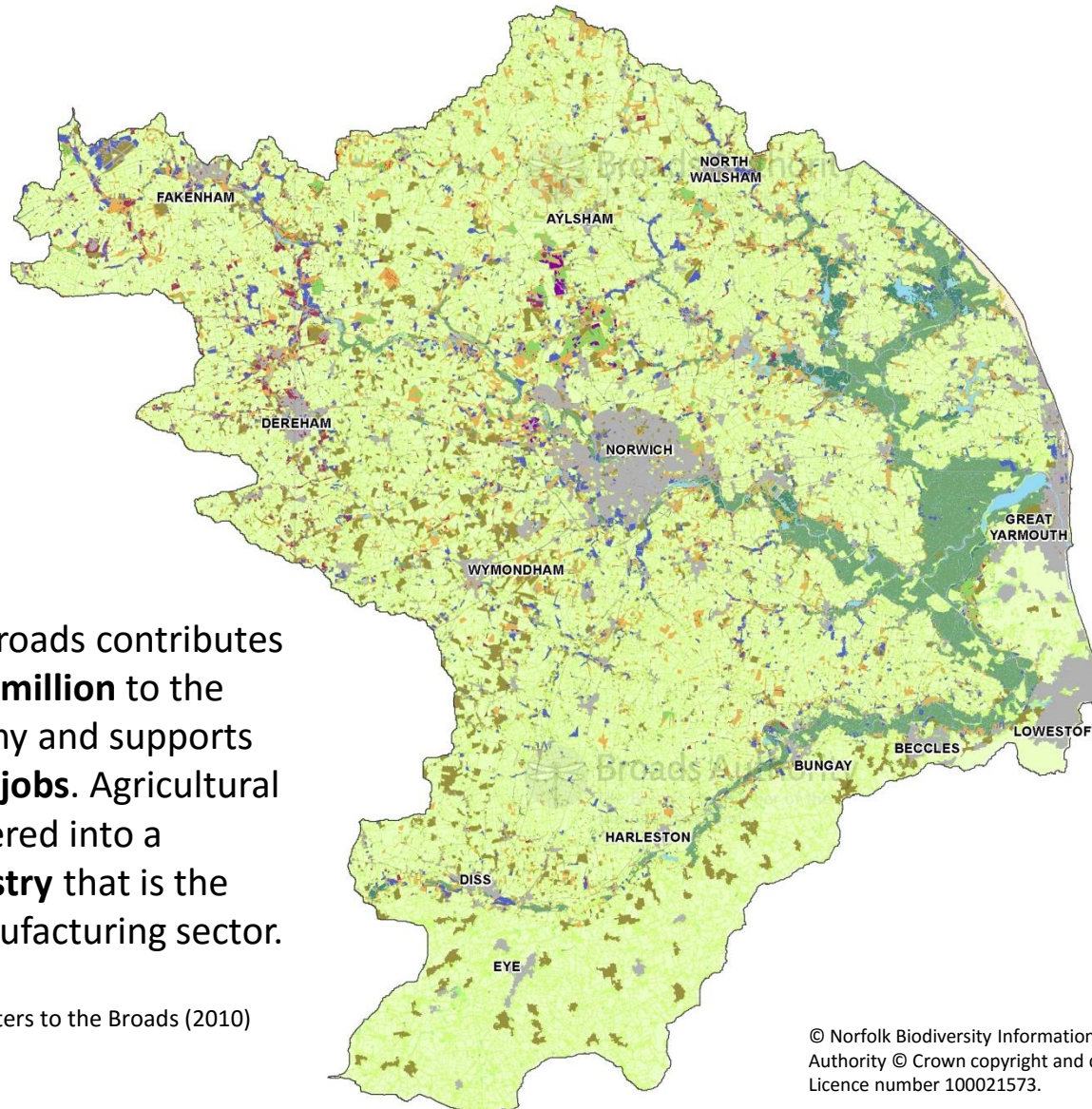
2014



Our aim is 'to improve our water environment and provide wider benefits to people and nature'

- To achieve our goals we will encourage and promote:
 - Uptake of cost-effective sustainable measures
 - Targeting of the right measures in the right places for multiple benefits
 - Close working between different organisations and groups

Land use



Farming in the Broads contributes more than **£150 million** to the Regional economy and supports more than **8500 jobs**. Agricultural produce is delivered into a **processing industry** that is the UK's largest manufacturing sector.

Source: Why Farming Matters to the Broads (2010)
NFU

Water Sensitive Farming 2016-2018

- 1 farm adviser providing bespoke water sensitive farming advice
- 3 knowledge exchange events for farmers to support Basin scale up and behaviour change
- 75 on-farm advisory visits
- 3000 acres farming improvements to enhance soil and water quality
- 15 silt traps type interventions to intercept run-off into rivers (£57,500 available)



Encouraging innovation



Encouraging innovation

Free kit trials

"New technology could increase your profit, improve the environment and help your business to comply with GAEC 5 - minimising soil erosion."

Louis Baugh, Norfolk Campaign for the Farmed Environment Chairman

See reverse for more details



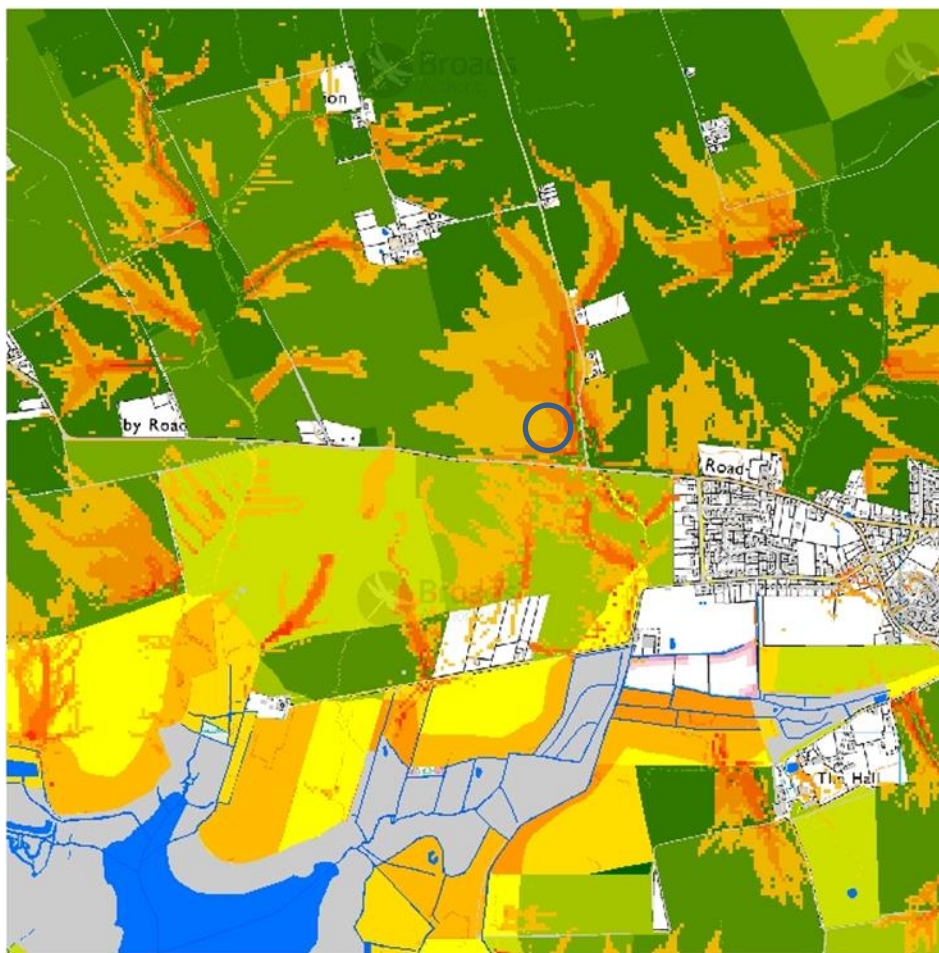
Demonstrating and monitoring



Demonstrating and monitoring



Silt trap targeting and construction



Silt trap targeting and construction



Cost effective measures

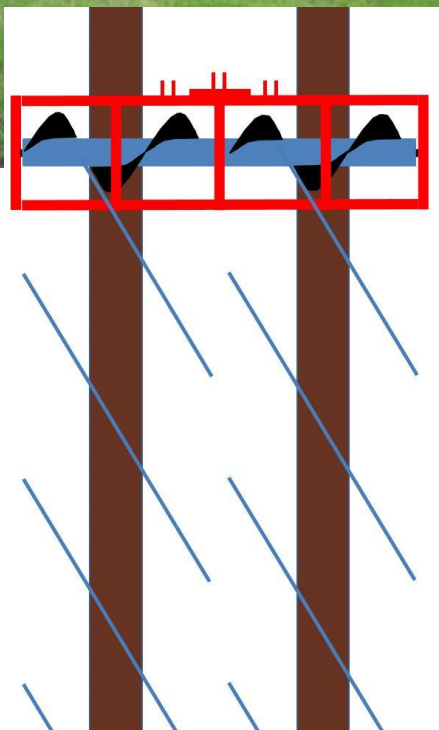
Tramlines can account for over 80% of over-winter losses of phosphorus, nitrogen and sediment in surface run-off on moderate slopes on both lighter and heavier soils



Tramline management was able to reduce sediment and nutrient losses by 72-99% in MOPS project trials

Encouraging innovation

Lland Ho *Earthwake*



Encouraging innovation



Broadland Catchment Partnership

