

**Beccles Area Neighbourhood Plan  
Designating the Beccles Area as a Neighbourhood Area**  
Report by Planning Policy Officer

<b>Summary:</b>	The report briefly introduces the Beccles Area Neighbourhood Plan with the comments received during the six week consultation period on Beccles area becoming a Neighbourhood Area in order to produce a Neighbourhood Plan being reported verbally at the meeting.
<b>Recommendation:</b>	That the Planning Committee notes the comments received and agrees to the verbal recommendation that will arise from the nature of the comments.

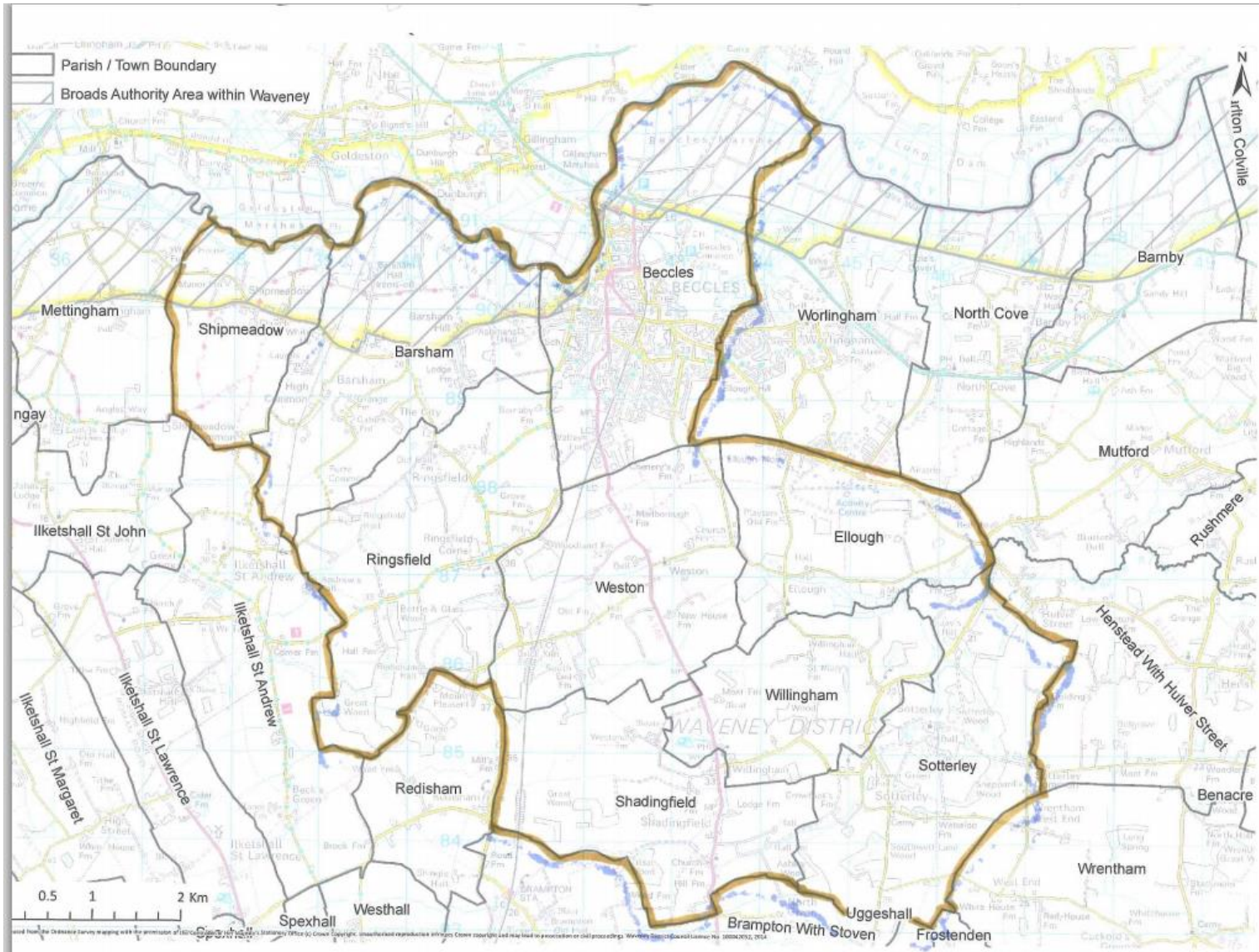
## **1 Neighbourhood Planning**

- 1.1 Neighbourhood planning was introduced through the Localism Act 2011. Neighbourhood Planning legislation came into effect in April 2012 and gives communities the power to agree a Neighbourhood Development Plan, make a Neighbourhood Development Order and make a Community Right to Build Order.
- 1.2 A Neighbourhood Development Plan can establish general planning policies for the development and use of land in a neighbourhood, for example:
  - where new homes and offices should be built
  - what they should look like.
- 1.3 Under the Neighbourhood Planning (General) Regulations 2012, parish or town councils within the Broads Authority's Executive area undertaking Neighbourhood Plans are required to apply to the Broads Authority and the relevant District Council to designate the Neighbourhood Area that their proposed plan will cover.
- 1.4 Once these nominations are received, there follows a six week period within which any member of the public may submit written comments to the Broads Authority and the relevant District Council regarding the proposed Neighbourhood Area, who will then consider the area, and the comments received, before approving or rejecting its designation. The designation of a Neighbourhood Area is therefore the first step in the process of preparing a Neighbourhood Plan.
- 1.5 Consultation on becoming a Neighbourhood Area runs from Friday 8 May to Friday 19 June 2015. The deadline for this report was 10 June. As such, in

order to not delay the Beccles Area Neighbourhood Plan, the comments will be reported to Planning Committee verbally with the appropriate recommendation.

## **2 Beccles Area Neighbourhood Area**

- 2.1 Beccles Town Council has submitted the application on behalf of the following Parishes who would become part of the Neighbourhood Area: Beccles, Barsham, Shipmeadow, Ringsfield, Weston, Shadingfield, Sotterley, Willingham and Ellough. The brown line shows the Neighbourhood Area and the stripes shows the Broads Authority Executive Area.



Source:  
Waveney District  
Council

### **3 Links of relevance**

- 3.1 The Broads Authority Neighbourhood Planning webpage:  
<http://www.broads-authority.gov.uk/planning/planning-policies/neighbourhood-planning>
- 3.2 Waveney District Council Neighbourhood Planning webpage:  
<http://consult.waveney.gov.uk/consult.ti/becclesneighbourhoodarea2015/consultationHome>
- 3.3 Some guidance/information on Neighbourhood Planning:  
<http://www.rtpi.org.uk/planning-aid/neighbourhood-planning/>

### **4 Financial Implications**

- 4.1 Occasional Officer time in supporting the process (as required by regulations).
- 4.2 There will be no cost to the Broads Authority for the referendum at the end of the process as Waveney District Council have agreed to take on this task and cost.

### **5 Conclusion and recommendation**

- 5.1 Comments received will be reported verbally along with the recommendation.

Background papers: None

Author: Natalie Beal  
Date of report: 9 June 2015

Appendices: None