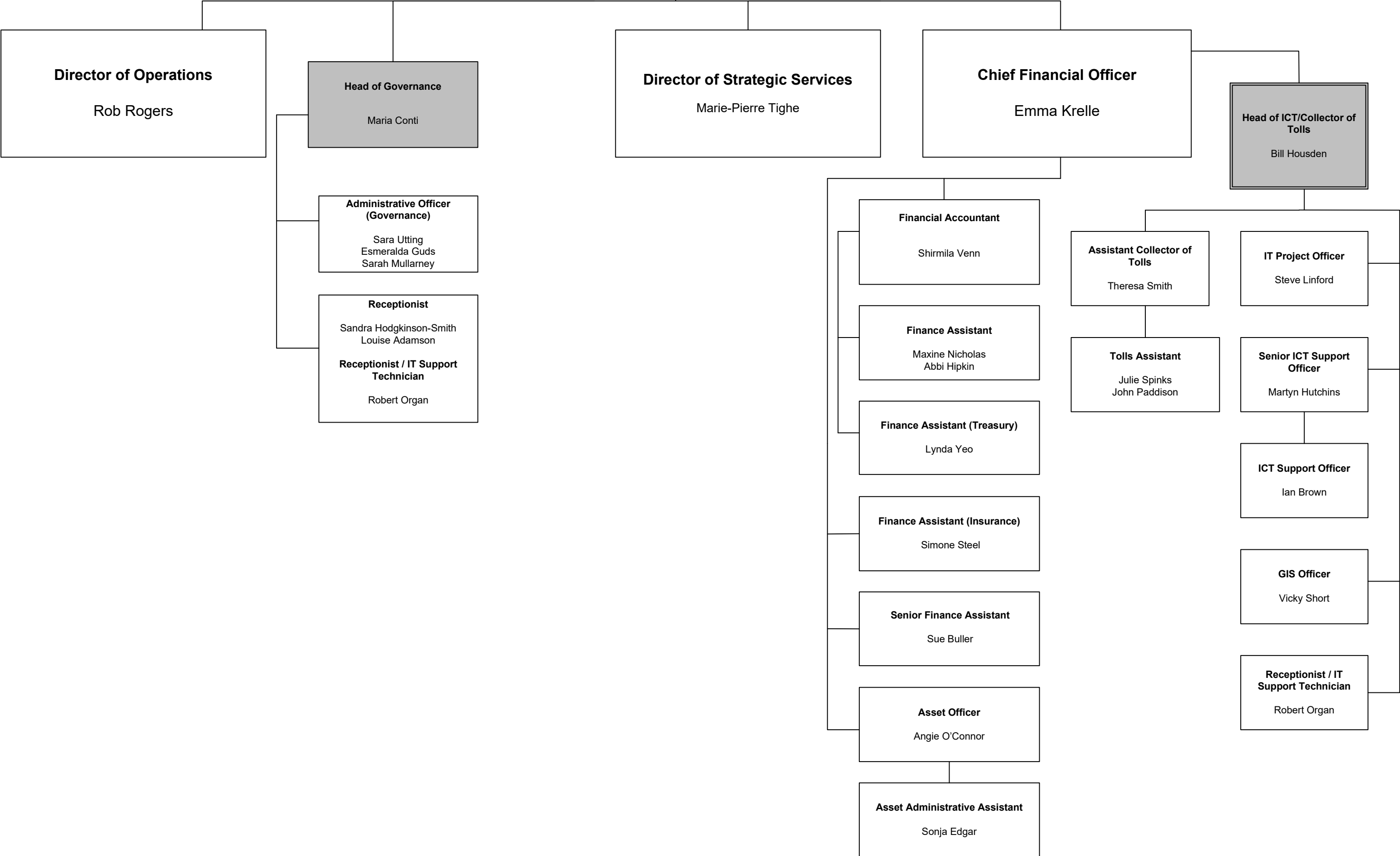
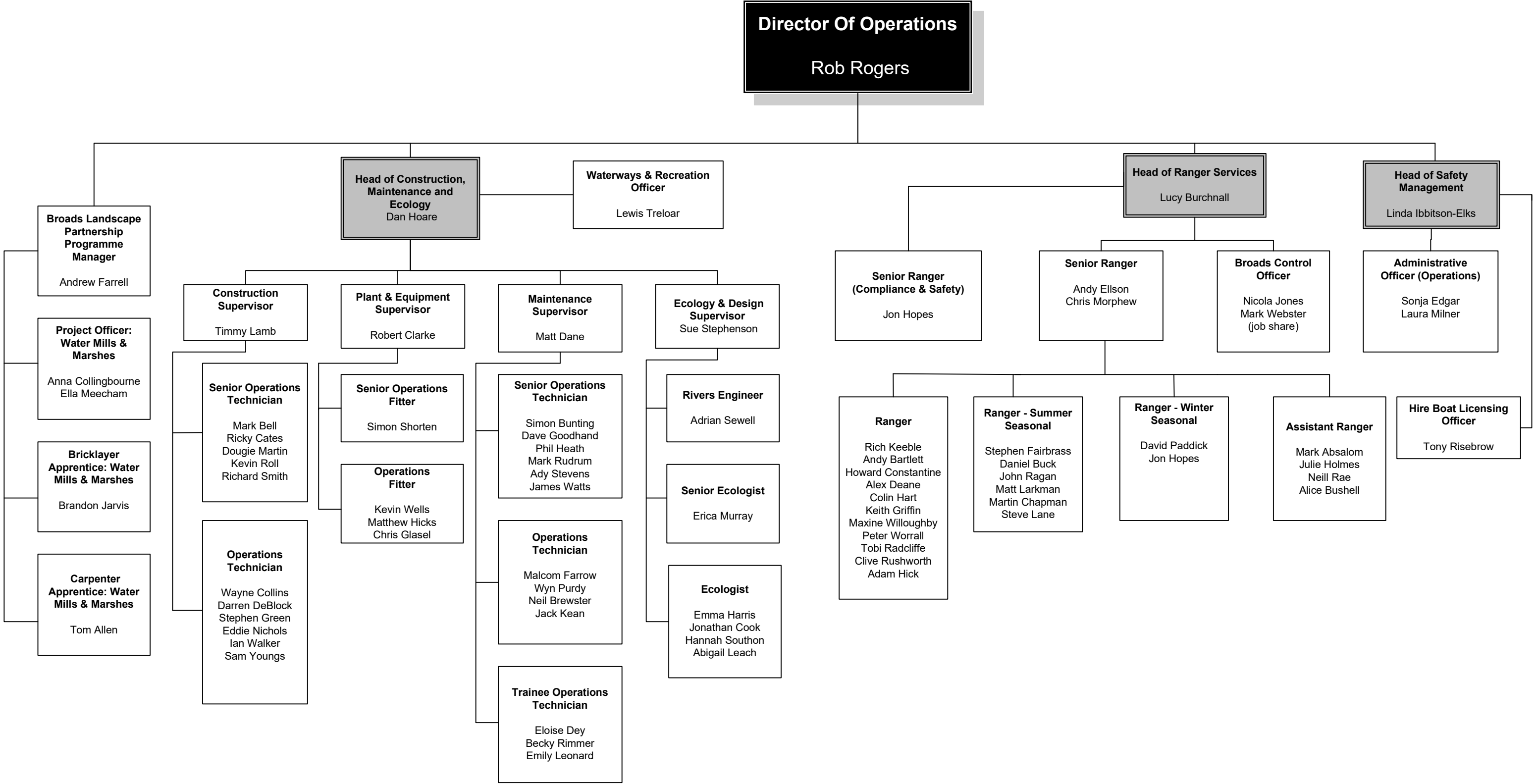


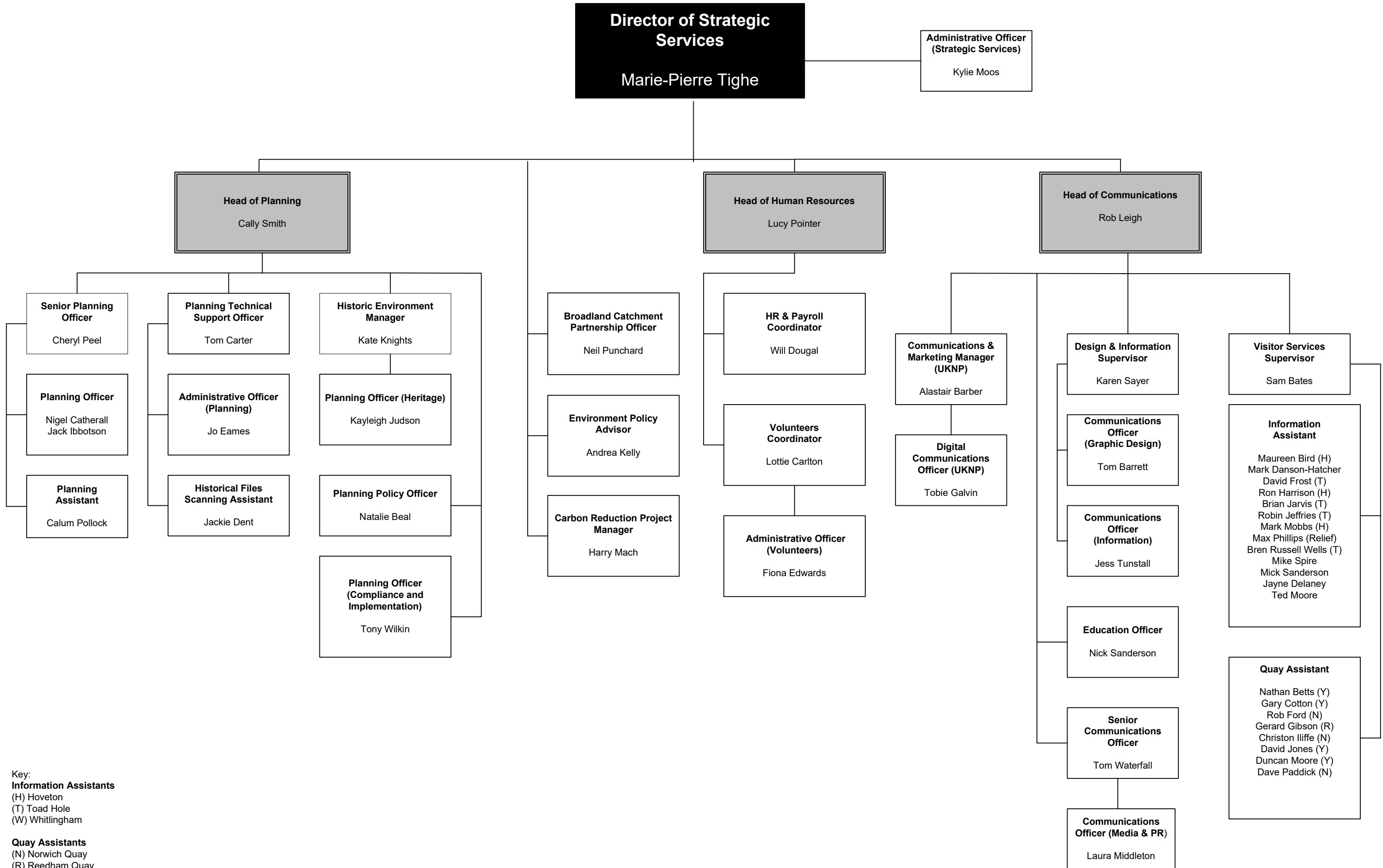
**Chief Executive**  
John Packman



# Operations Directorate



# Strategic Services Directorate



Key:  
**Information Assistants**  
 (H) Hoveton  
 (T) Toad Hole  
 (W) Whitlingham  
  
**Quay Assistants**  
 (N) Norwich Quay  
 (R) Reedham Quay  
 (Y) Yarmouth Yacht Station