

2.2 HISTORICAL CONTEXT

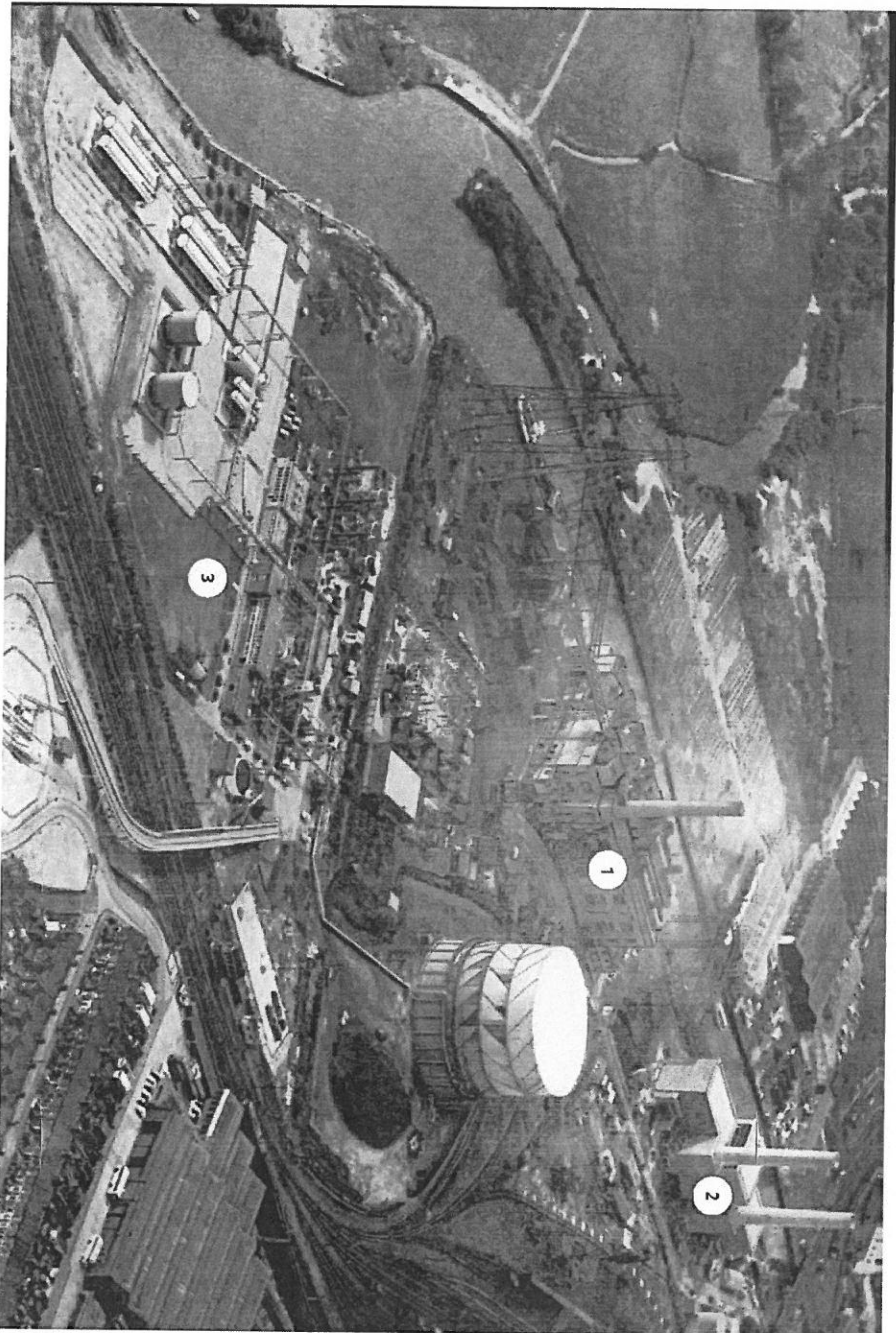


Figure 2.2.1: Historical Image of Site

**2.2.1** What has recently been known as the 'Utilities site' was first defined in 1845 with the construction of the Norfolk Railway between the construction of the Norfolk Railway between Norwich and Great Yarmouth

**2.2.2** Development of the site itself began in the 1920s with the construction of the Thorpe power station. The location benefited from an abundant supply of process water and service access - for coal and goods, excellent railway connections and a good foundation of gravel resting on chalk. The power station was officially opened in October 1926

**2.2.3** The coal fire plant was extended, before being superseded in the 1960s by a new gas-oil fired power station constructed at the western end of the site. This was served by a dedicated rail siding and a new inlet off the river.

**2.2.4** Grid connection infrastructure including the 75m high pylons are still in operation.

**2.2.5** Also during the 1960s the Cremorne Lane Gas Works were constructed within the eastern part of the site - served by a bridge over the railtracks from Cremorne Lane. Only the extreme eastern point of the site has remained undeveloped

**KEY**

- 1. Coal Fired Power Station
- 2. Gas-Oil Fired Power Station
- 3. Cremorne Lane Gas Works

An aerial photograph of an industrial site, likely a munitions plant. The image shows a complex of buildings, including several large, rectangular structures with gabled roofs. There are numerous smaller buildings and structures scattered throughout the site. The surrounding area appears to be a mix of open fields and wooded areas. The photograph is oriented vertically on the page.

## The Site

An aerial photograph showing the airstrip, S-4 Ferry Co. Airstrip, Living over Arrow Works and Norwich's 1st Football Ground with Peel Ground and the Cliffliss sites in the middle distance. 0932