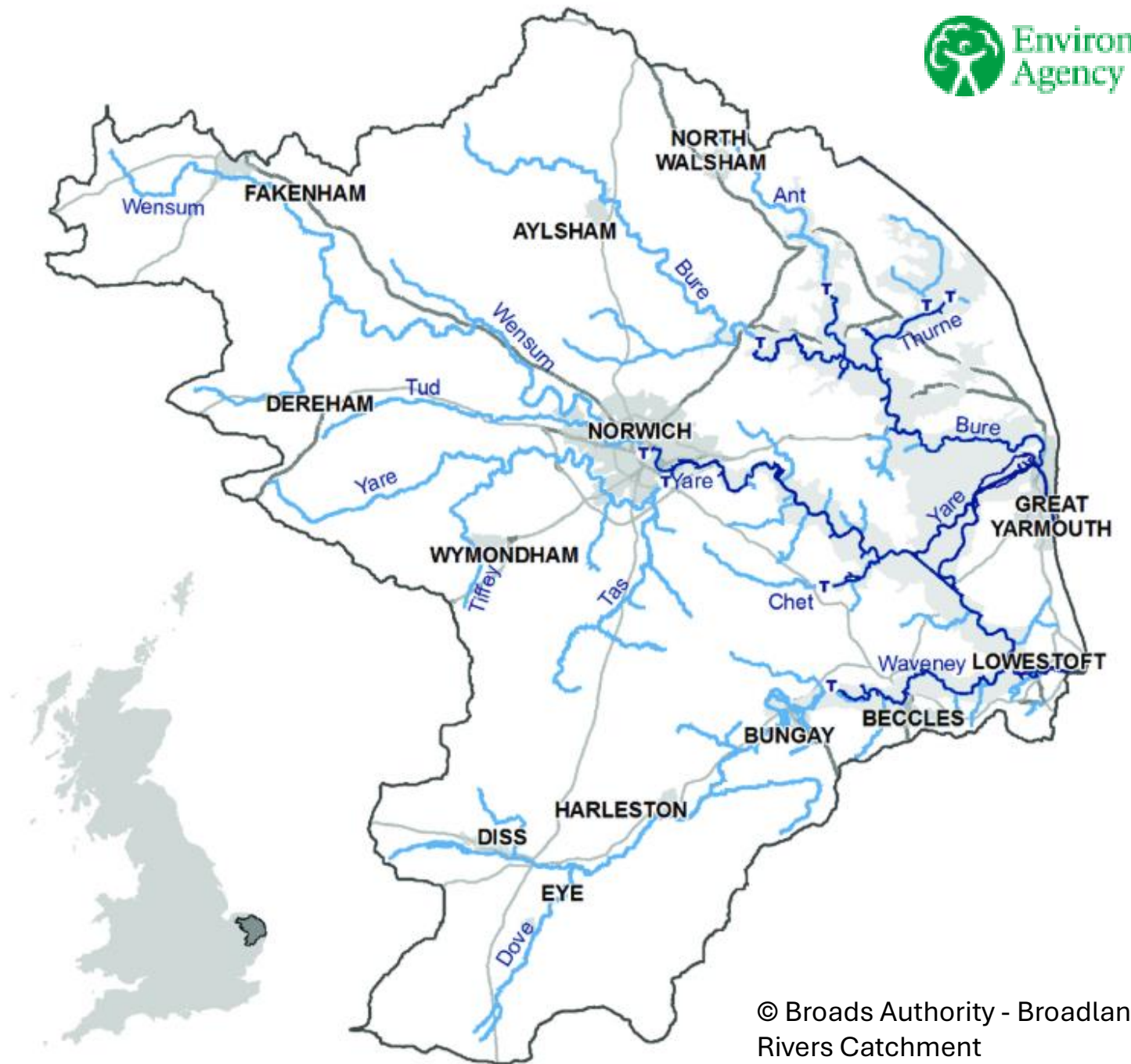


Planning for sustainable land and water use

Tony Grayling – Environment Agency
Director for Nature and Place



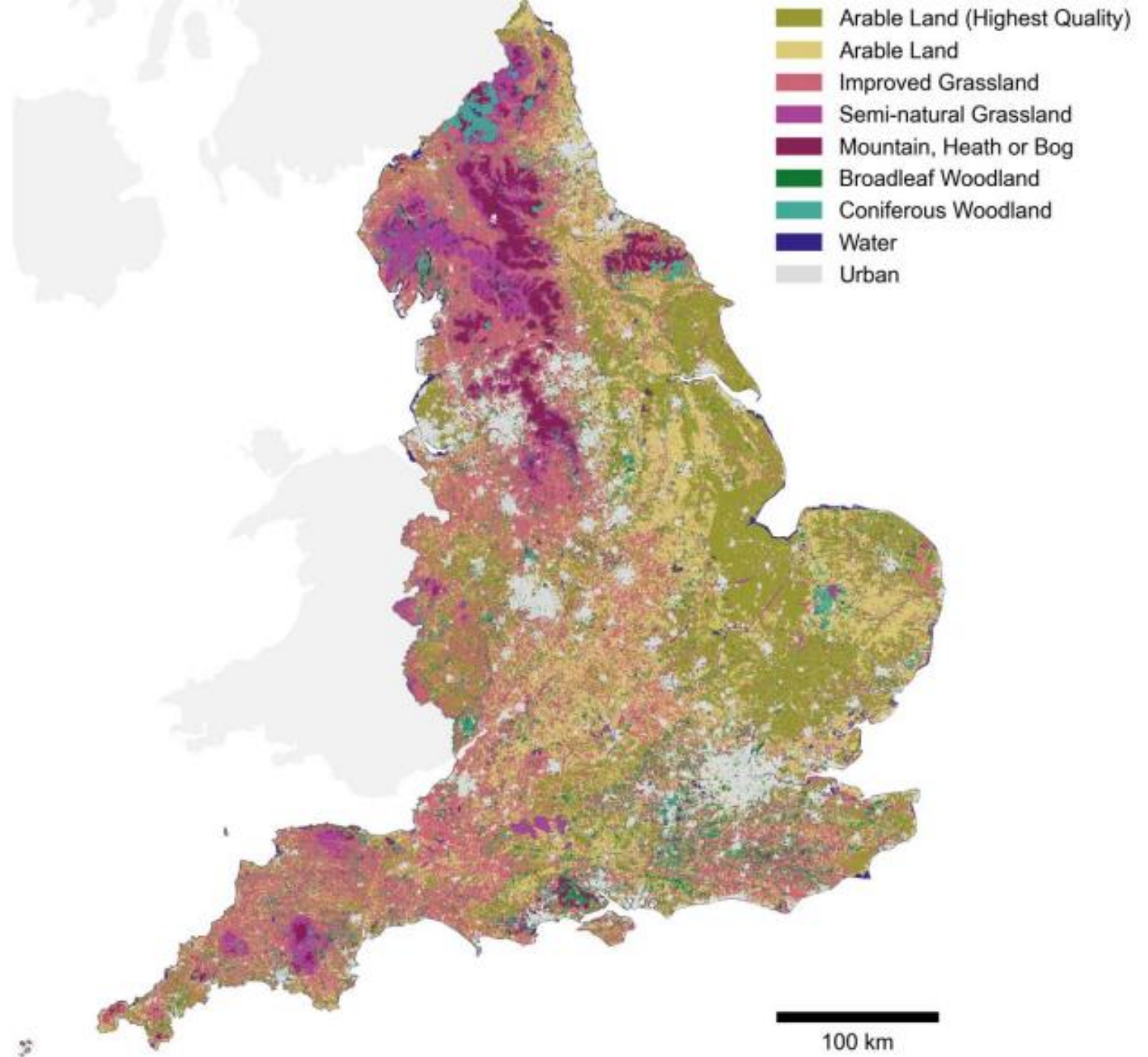
Land Use Framework

Meet environmental goals (EIP 2025)
- associated statutory and non-statutory targets (including 30 by 30)

Manage this in a changing climate
and with rising sea levels

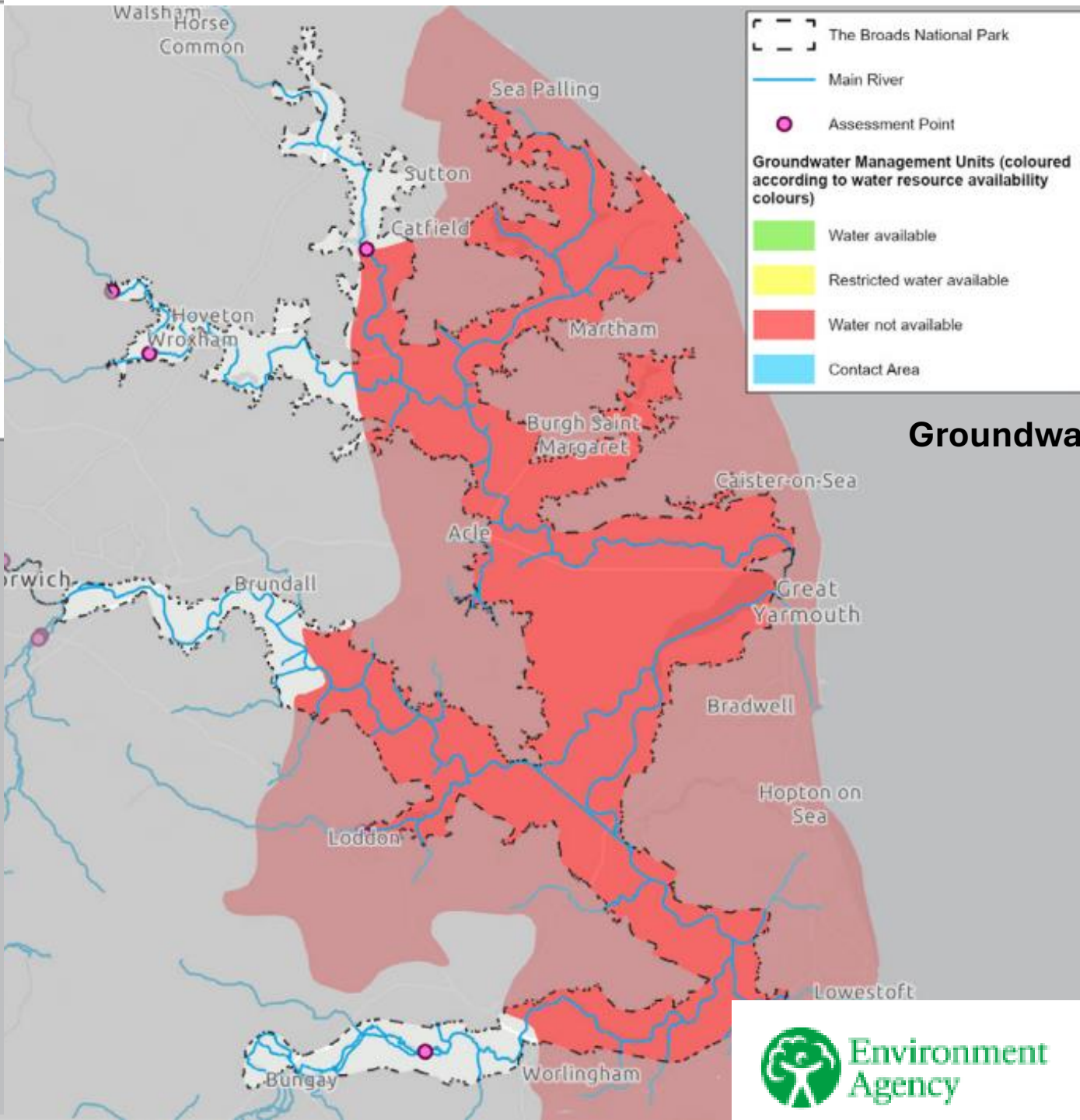
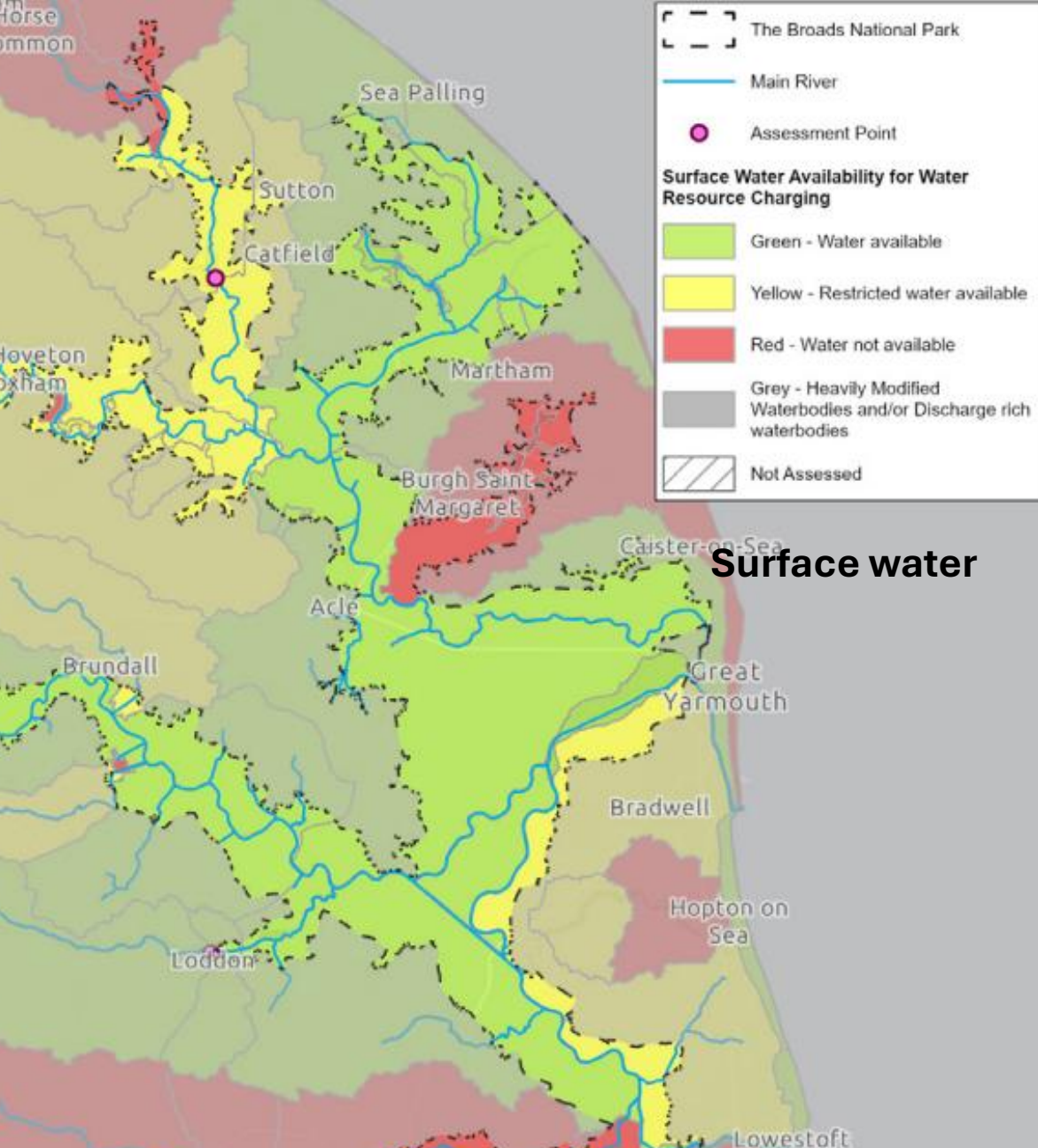
Reconcile this change with farming
and food production - [Food strategy](#)

Ensuring flood and wider climate
resilience



Flooded fields around Geldeston, River Waveney





'Design Guide to Support Water Table and Water Resource Management in the Broads National Park'



Land Use Choices Tool

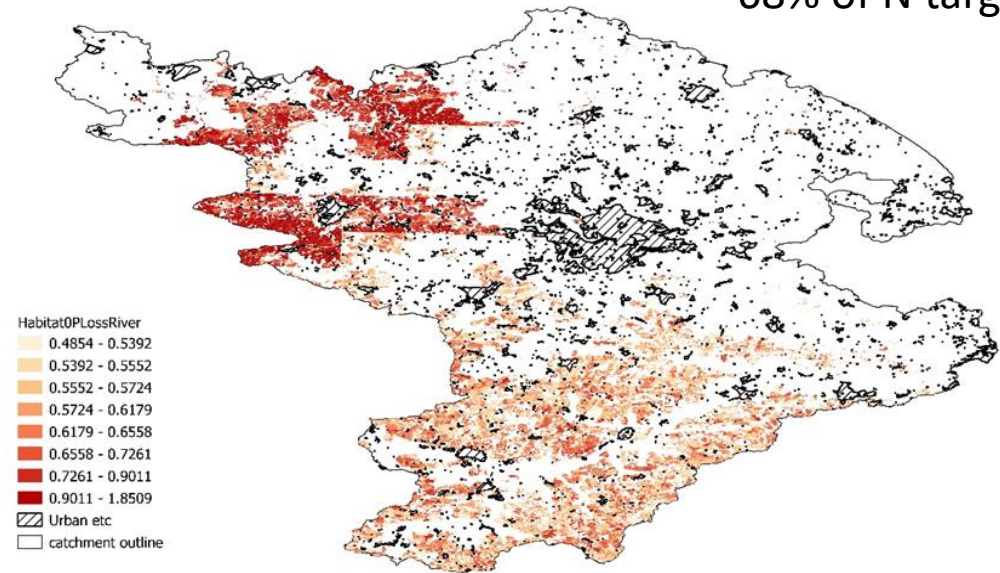
Integrates multiple spatial datasets

Enables options to meet environmental outcomes to be explored

Can be used to inform choices and decision making

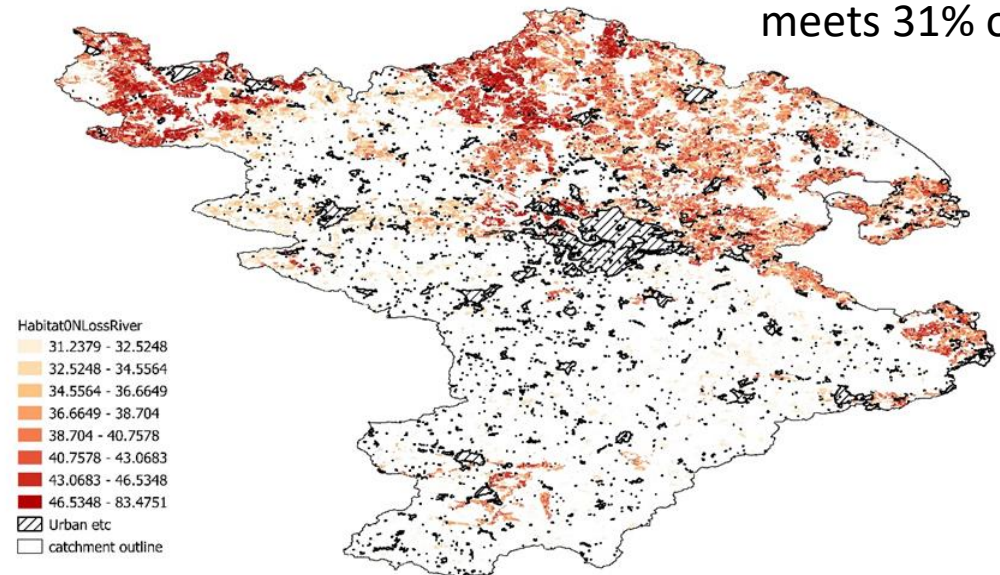
P Loss to river

Meeting P target delivers 68% of N target



N Loss to river

Meeting N target only meets 31% of P target

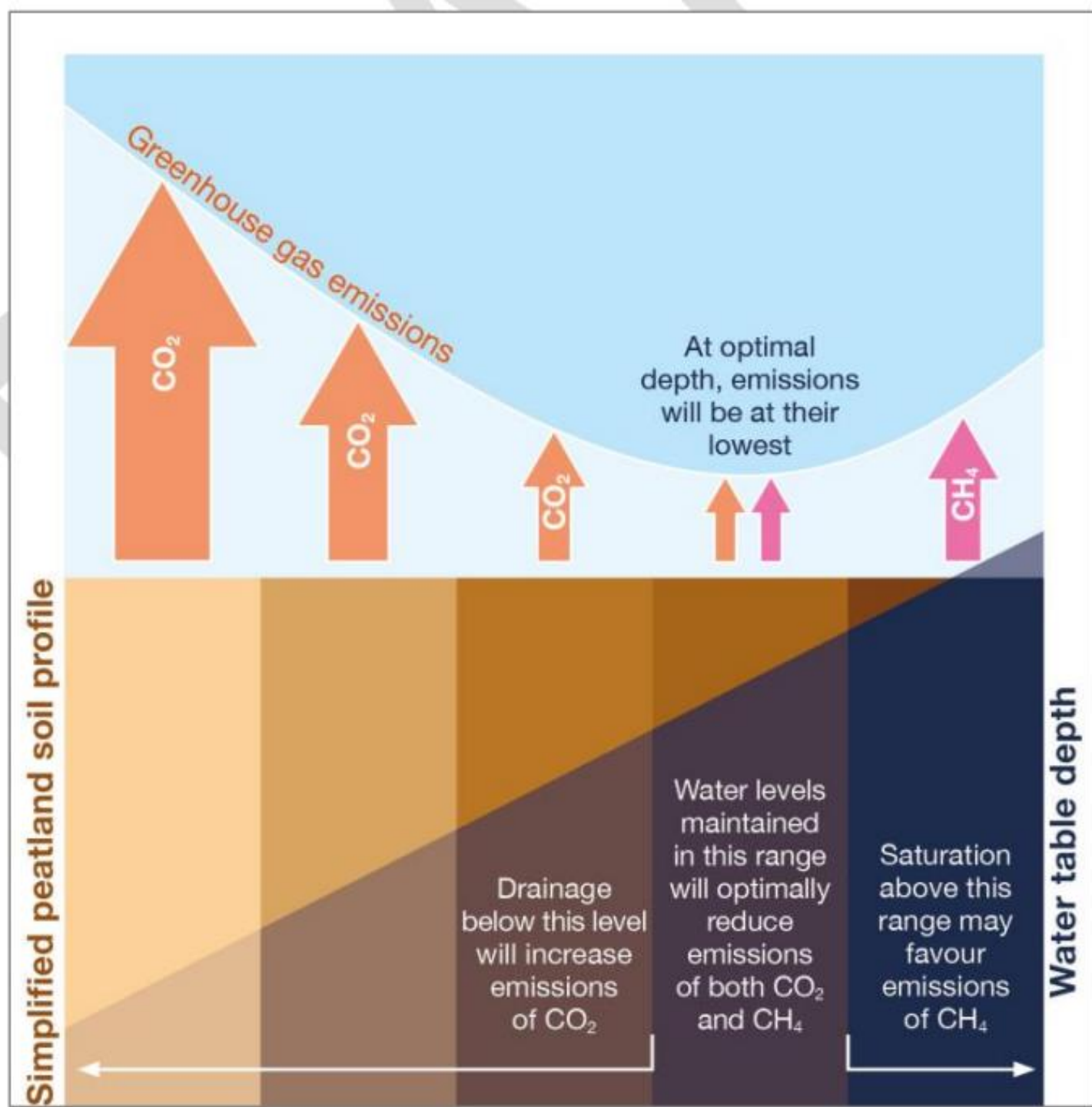


Wetter farming is a key intervention for preventing further carbon loss from agricultural peat

For every 10cm reduction in water-table depth (up to 30cm below ground surface), we could save the equivalent of 3 tonnes of carbon dioxide per hectare per year

Evans et al 2021, Nature

Diagram from the Lowland Agricultural Peat TaskForce Report. 2023



Campfield Marsh



Nichols Moss



Lyth Valley



Scaleby Moss



Durham Carrs



Leven Carrs



Winmarleigh



Rindle Moss



Little Wolden Moss



Lapwing Estate



Thorne & Hatfield Moors



Swinefleet



Harper Adams



Dunham Massey



Bourne North Fen



Stretham



Wissington



Horsey



Gold Corner



Greylake



Northmoor



Ramsey Mereside



Langley Abbey



Heckingham



Agglestone Mire



Canford Heath



Flit Valley



Holme



Great Fen



Beccles Marshes



ReMeMaRe

Vision:

Restored estuarine & coastal habitats that benefit people & nature

Mission:

Restore at least 15% of our priority habitats along the English coast



Credit: Michael Vos



Credit: Nicola Shearer



Credit: Paul Naylor

Better regulation for nature recovery – our aims

1. Implement key recommendations from the **Corry Review** and **Independent Water Commission**
2. Simplify the permitting journey **for everyone** delivering nature recovery work
3. Unlock **landscape-scale delivery** at pace to meet ambitious **nature recovery targets**
4. Develop an **Earned Autonomy** model that **increases trust** and **regulatory confidence**.
5. **Focus EA regulatory resources** where they deliver greatest impact for people, communities and the environment.

Key messages:

- Large scale change in land use and water management is needed to meet environmental goals
- Significant reform is needed, including spatial targeting to optimise land use
- A huge collaborative effort is needed, building a consensus and with everyone playing their part