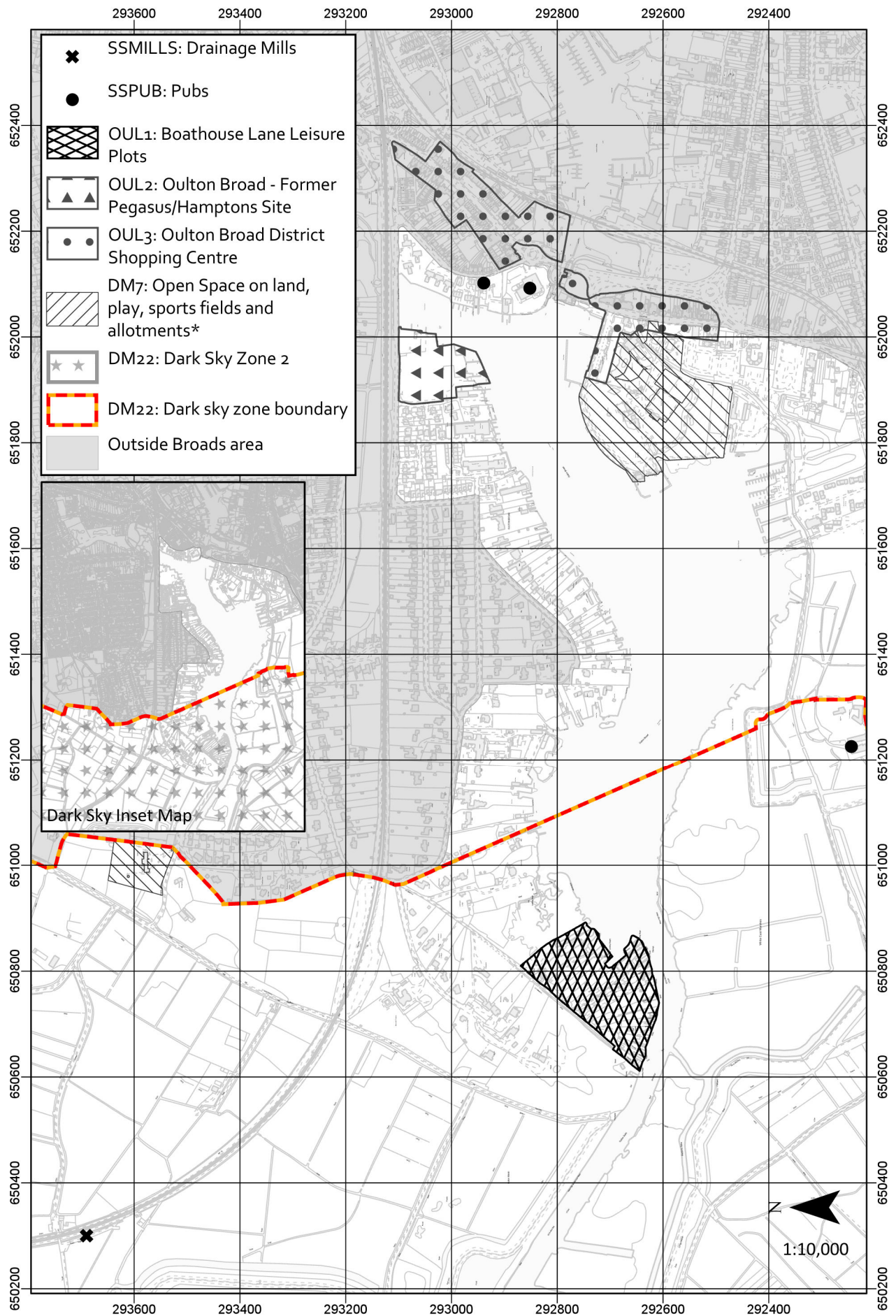


14. OULTON BROAD

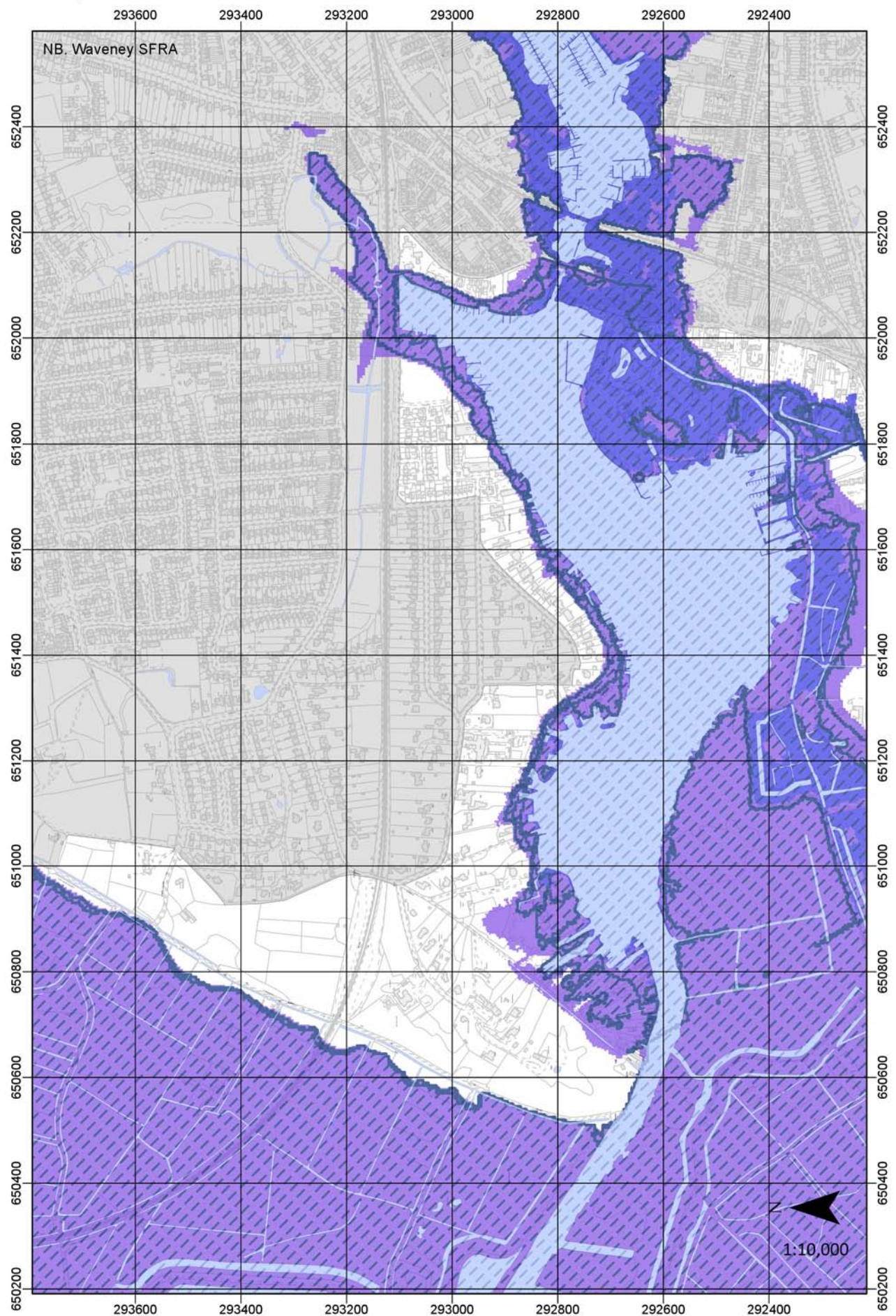
Policy Map



© Crown copyright [and database rights] 2018 Ordnance Survey 100021573. You are granted a non-exclusive, royalty free, revocable licence solely to view the Licensed Data for non-commercial purposes for the period during which the Broads Authority makes it available. You are not permitted to copy, sub-license, distribute, sell or otherwise make available the Licensed Data to third parties in any form. Third party rights to enforce the terms of this licence shall be reserved to Ordnance Survey. © Norfolk County Council (Norfolk Historic Environment Record).

14. OULTON BROAD

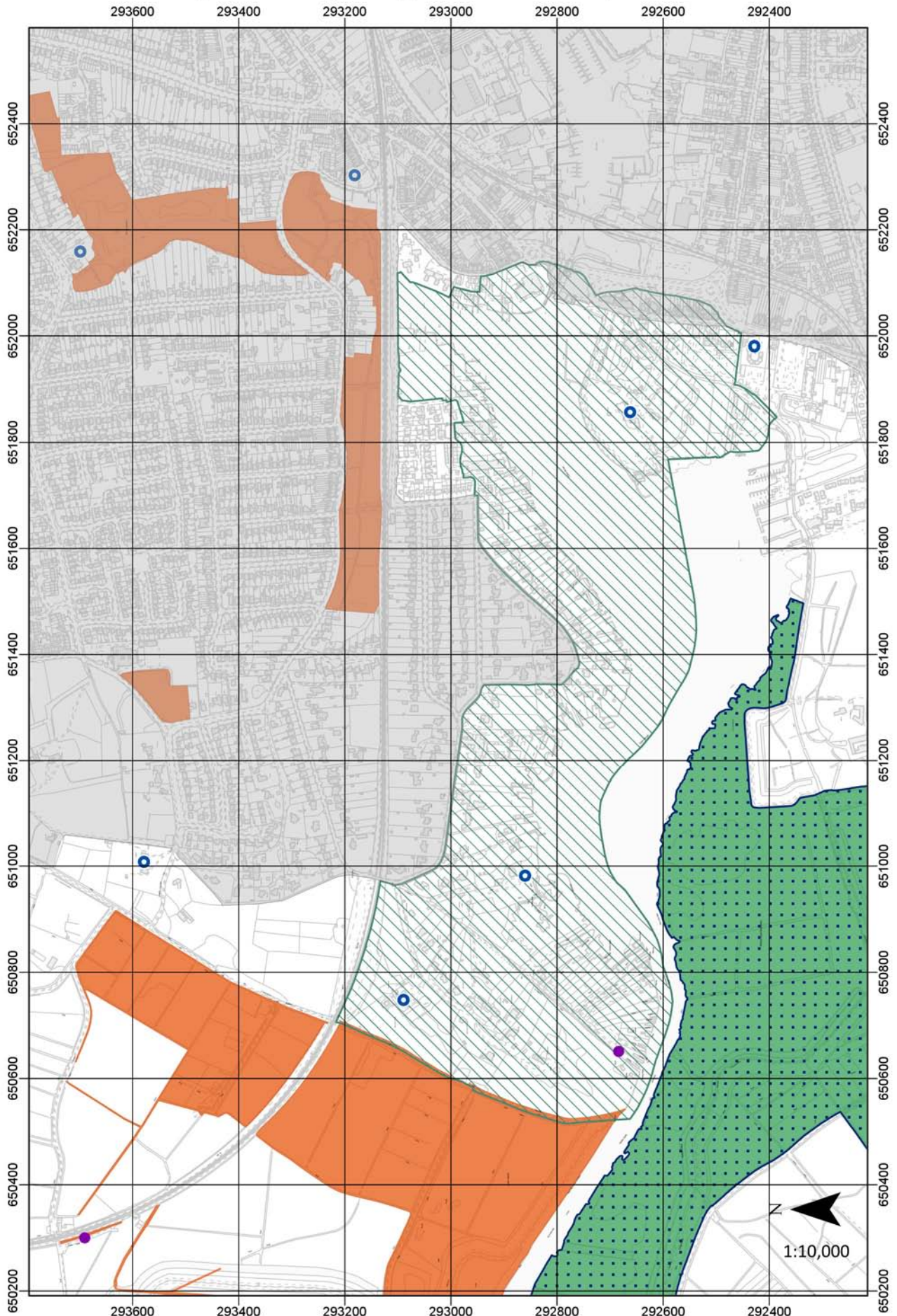
Flood Map



© Crown copyright [and database rights] 2019, 2004. Ordnance Survey 100021573,100024198. You are granted a non-exclusive, royalty free, revocable licence solely to view the Licensed Data for non-commercial purposes for the period during which the Broads Authority makes it available. You are not permitted to copy, sub-license, distribute, sell or otherwise make available the Licensed Data to third parties in any form. Third party rights to enforce the terms of this licence shall be reserved to Ordnance Survey. © Environment Agency copyright and/or database right 2017. All rights reserved. Some features of this map are based on digital spatial data from the Centre for Ecology & Hydrology, © NERC (CEH).

14. OULTON BROAD

Nature Conservation Designations & Heritage Assets, plus Minerals & Waste Map



© Crown copyright [and database rights] 2019. Ordnance Survey 100021573. You are granted a non-exclusive, royalty free, revocable licence solely to view the Licensed Data for non-commercial purposes for the period during which the Broads Authority makes it available. You are not permitted to copy, sub-license, distribute, sell or otherwise make available the Licensed Data to third parties in any form. Third party rights to enforce the terms of this licence shall be reserved to Ordnance Survey. © Historic England 2019. © Natural England 2019 Contains Ordnance Survey data. The Historic England GIS Data contained in this material was obtained on 24/04/2019. The most publicly available up to date Historic England GIS Data can be obtained from www.HistoricEngland.org.uk. © Norfolk County Council. © Suffolk Biological Records Service.