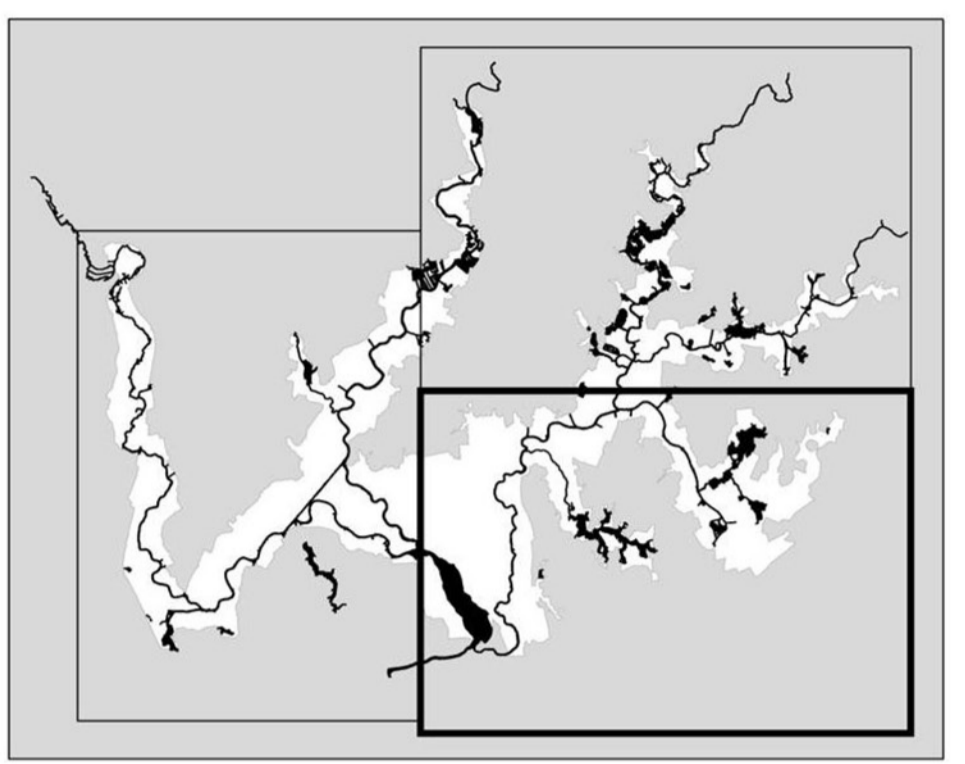


**Broad Local Plan**  
**Nature Conservation Designation & Heritage Asset, plus Minerals and Waste Sites**

North East Scale 1:30,000  
May 2019

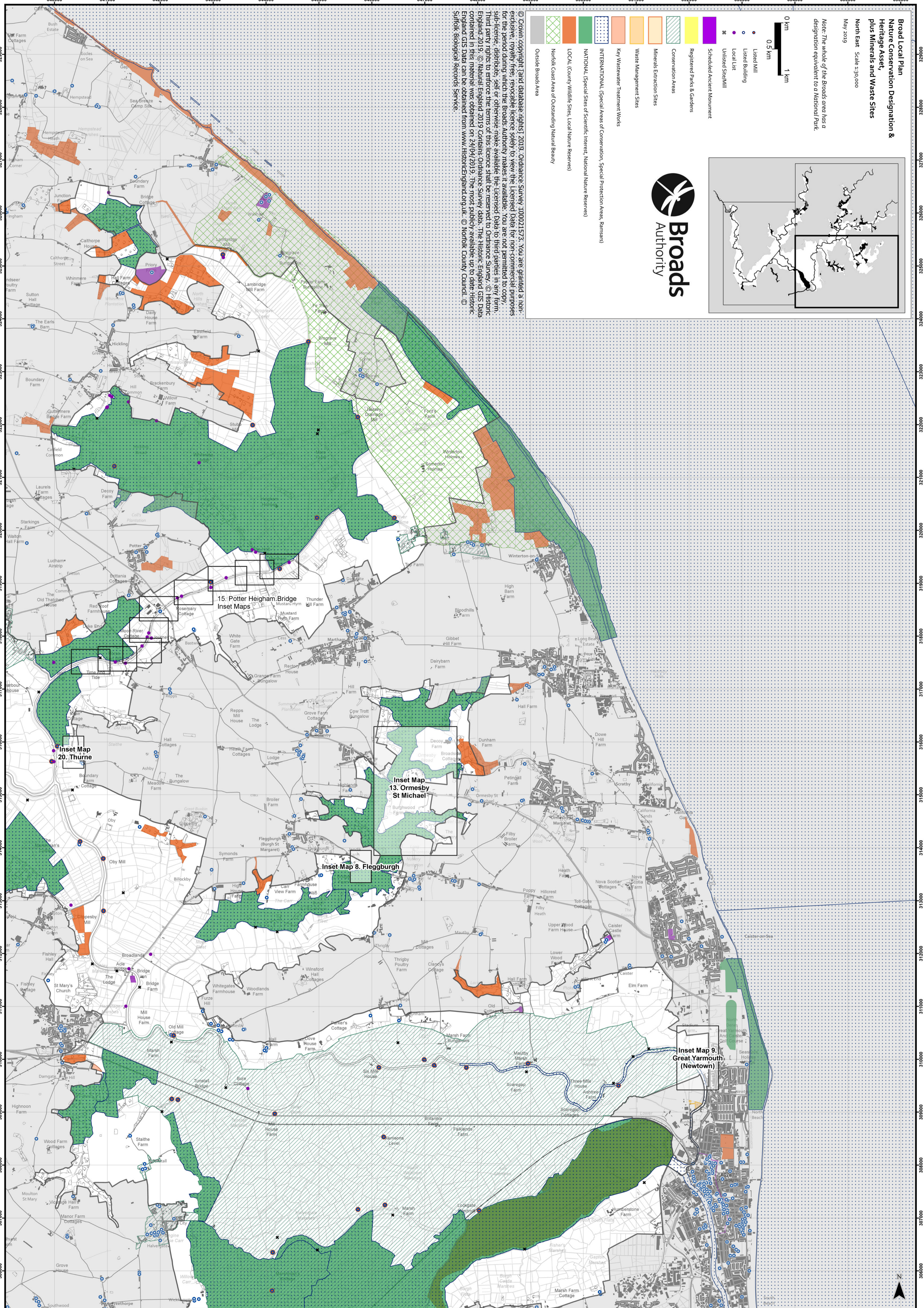
Note: The whole of the Broads area has a designation equivalent to a National Park.

0 km  
0.5 km  
1 km



- Listed Mill
- Listed Building
- Local List
- Unlisted Stream/Well
- Scheduled Ancient Monument
- Registered Parks & Gardens
- Conservation Areas
- Minerals Extraction Sites
- Waste Management Sites
- Key Wastewater Treatment Works
- INTERNATIONAL (Special Areas of Conservation, Special Protection Areas, Ramsars)
- NATIONAL (Special Sites of Scientific Interest, National Nature Reserves)
- LOCAL (County Wildlife Sites, Local Nature Reserves)
- Norfolk Coast Area of Outstanding Natural Beauty
- Outside Broads Area

© Crown copyright. Land database rights 1 2019. Ordnance Survey 100021573. You are granted a non-exclusive, royalty-free, perceptive licence solely to view the Licensed Data for non-commercial purposes for the period during which the Broads Authority makes it available. You are not permitted to copy, sub-licence, distribute, sell or otherwise make available the Licensed Data to third parties in any form. Third party rights to enforce the terms of this licence shall be reserved to third parties in any form. © Natural England 2019. Contents Ordnance Survey data. The Historic England GIS Data contained in this material was obtained on 24/04/2019. The most publicly available up to date Historic England GIS data can be obtained from [www.historicengland.org.uk](http://www.historicengland.org.uk). © Norfolk County Council. © Suffolk Biological Records Service.



15. Potter Heigham Bridge Inset Maps

Inset Map 20. Thurne

Inset Map 13. Ormesby St Michael

Inset Map 8. Fleggburgh

Inset Map 9. Great Yarmouth (Newtown)