

Broads Engage

# Accessing the Broads – priorities for action



Adrian Clarke  
Senior Waterways and Recreation Officer

# Today's event

- 1.30 Welcome and presentation on land access
- 2.00 Table session 1 - Land Access
- 2.45 Tea break
- 3.15 Briefing on moorings
- 3.25 Table session 2 - Mooring Provision
- 4.10 Round up and close

# Broads Integrated Access Strategy

- Develop and implement schemes to upgrade and improve the network of access points and routes (where adverse effects can be prevented), linked to visitor facilities and including easier access for people with mobility and sensory needs
- Implement Broads Angling Strategy action plan through partnership working and securing of additional resources

(Broads Plan 2017)

## Key objectives

- To improve links between land and water and to the water's edge
- To improve access links to local facilities, settlements and visitor destination points
- To encourage sustainable travel choices and improve links between public transport provision and visitor destination points and access routes
- To provide appropriate information and interpretation on access to recreational opportunities

# Constraints

BA works 70% navigation 30% National Park Grant

Current capacity – approx. 30km of path (2 annual cuts)

Land ownership

Access projects funded by NPG include slipways, canoe launches and angling facilities

More projects that require ongoing maintenance = less capacity for new projects



New facilities...



... need ongoing maintenance



A photograph of a wooden bridge with railings crossing a flooded area. The water is murky and brown. Bare, leafless trees are visible in the background, suggesting a winter or late autumn setting. The bridge is made of weathered wood and has a chain-link fence section in the middle. The water level is high, reaching up to the railings in some places. The overall scene conveys a sense of environmental impact or flooding.

## Public Rights of Way and the changing climate

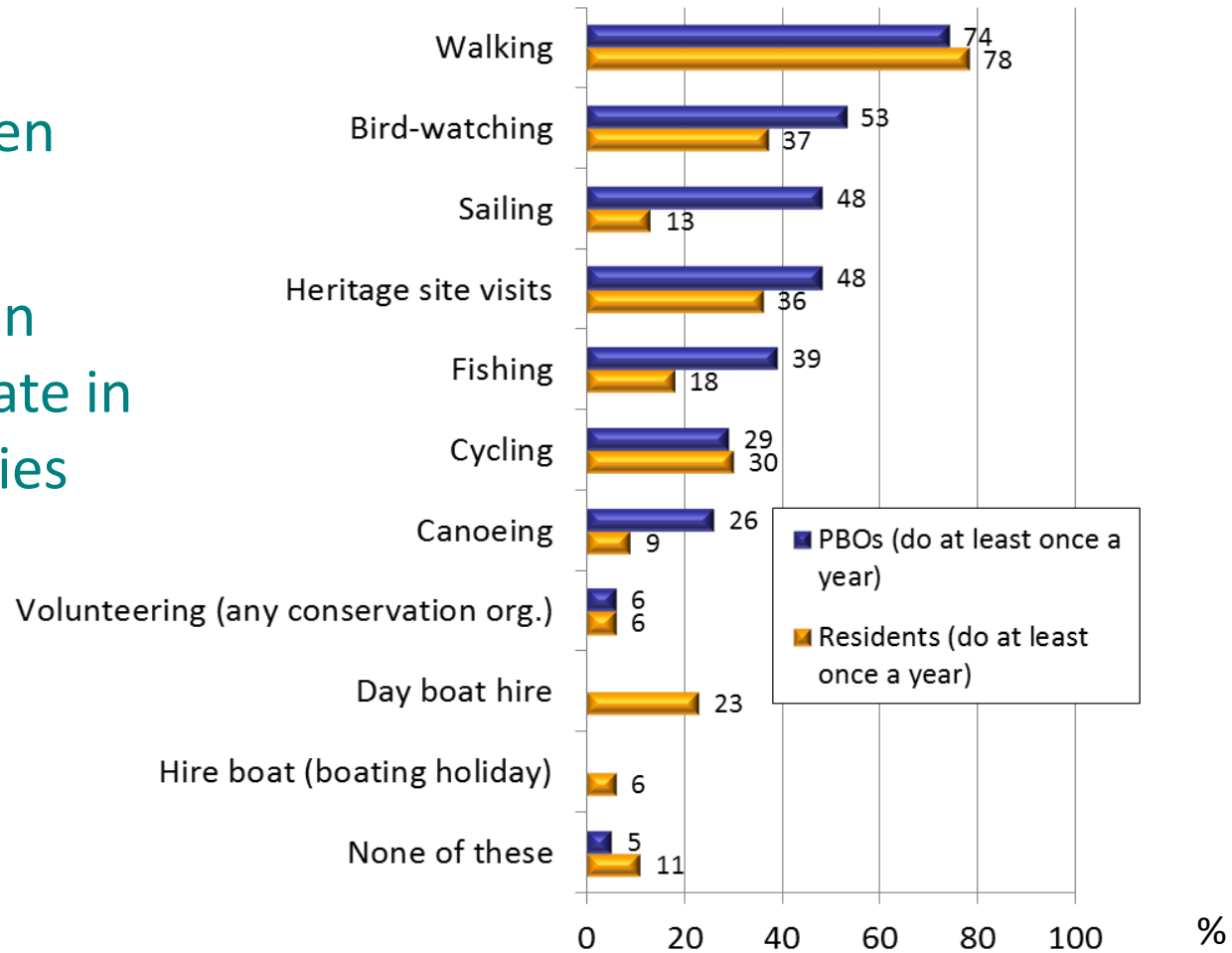


# Leisure activities undertaken on the Broads

PBOs & residents

Walking is the most commonly undertaken activity by all users

PBOs more likely than residents to participate in water-related activities

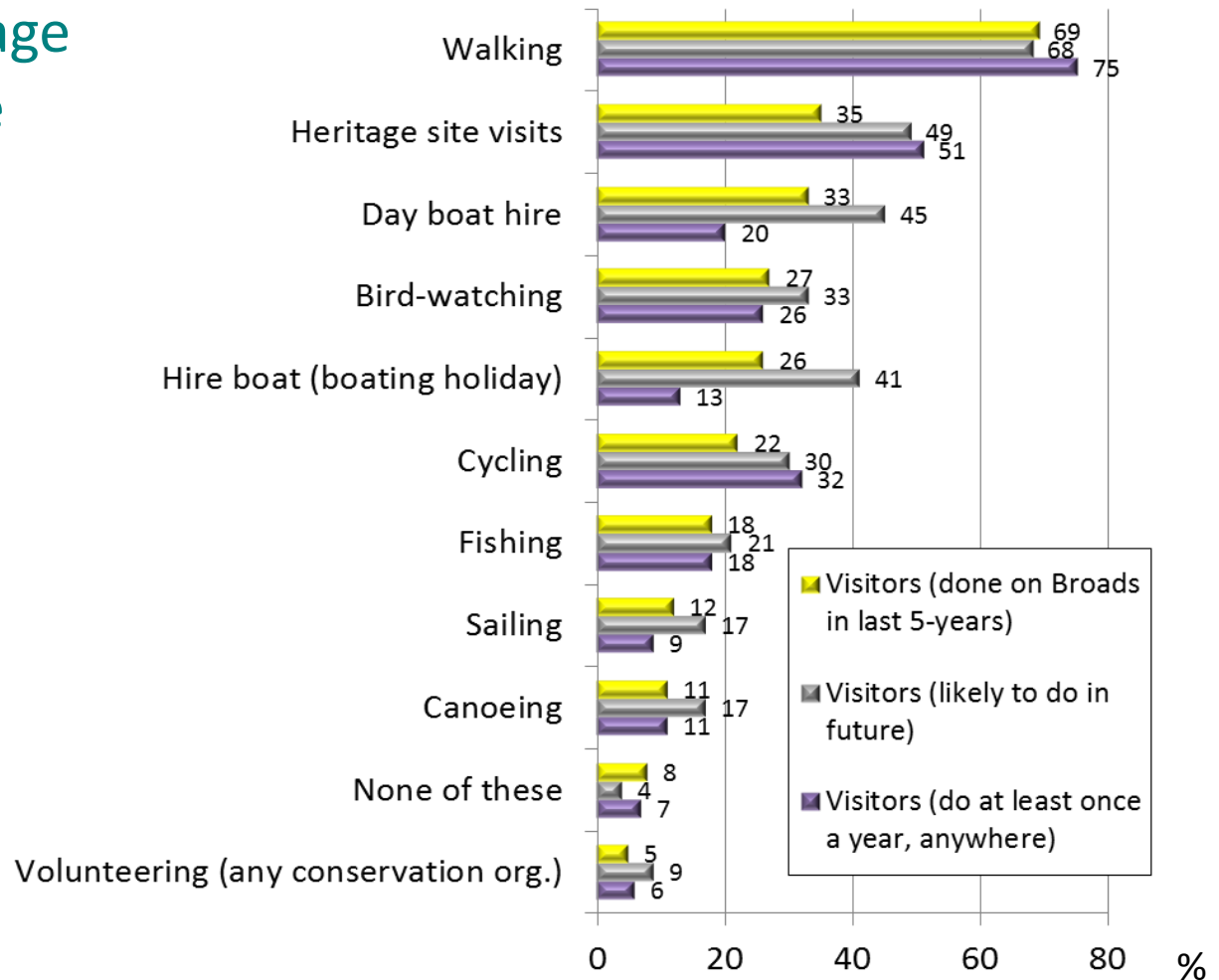




# Activities on the Broads

## Visitors

Walking, visiting heritage sites and day boat hire popular activities for visitors











# Green Infrastructure & Planning

**Andy Hutcheson**  
**Environment Manager**  
**(Green Infrastructure,**  
**Strategy & Advice)**  
**Norfolk County Council**



# Green infrastructure (Gov.uk website)

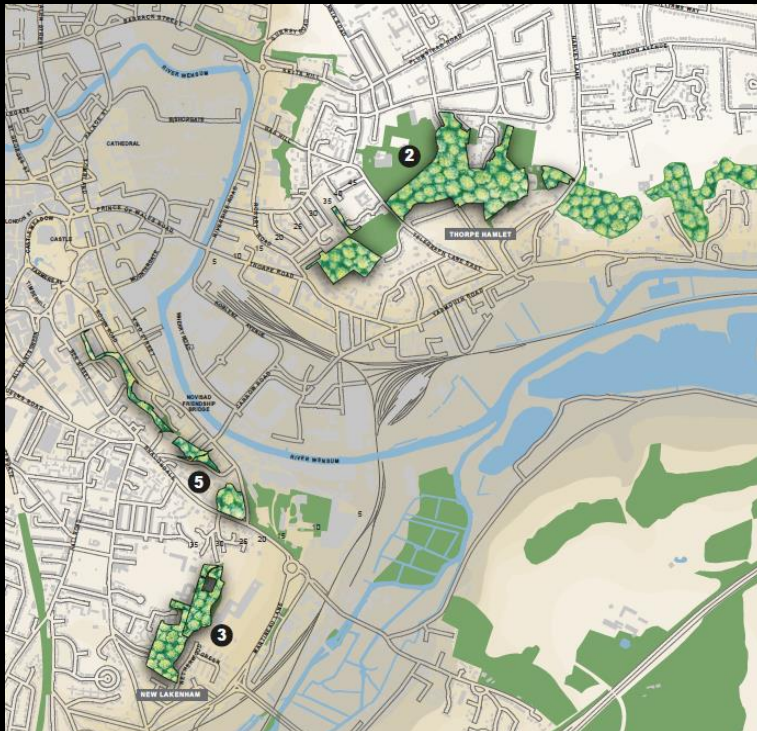
*Green infrastructure is a network of multifunctional green space, urban and rural, which is capable of delivering a wide range of environmental and quality of life benefits for local communities.*

*Green infrastructure is not simply an alternative description for conventional open space. As a network it includes parks, open spaces, playing fields, woodlands, but also street trees, allotments and private gardens. It can also include streams, canals and other water bodies and features such as green roofs and walls.*





# Two components of GI: Access and biodiversity





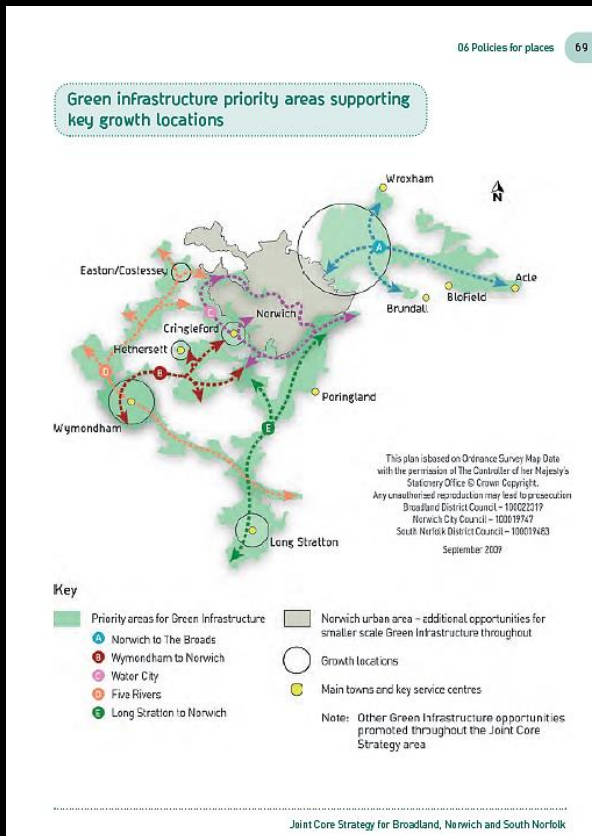
# Greater Norwich Joint Core Strategy

## Policy 10: Locations for major growth or expanded communities in the Norwich Policy area

Supporting text, para 6.24:

“Provision of significant levels of local GI is essential to ensure the long-term sustainability of the proposed developments...”

“It must also be sufficient in scale and type to ensure that there are no potential impacts on nearby sites of international biodiversity importance...”



# Working in partnership



# 1 Introduction: Refreshed aims and objectives

1.1 The new 10 year Statement of Actions has a refreshed set of aims and objectives with a structure for annual delivery plans.

We aim to create an easy to use, safe, healthy and sustainable way to enjoy the Norfolk coast and countryside. We will:

- manage the countryside access network so that it is better able to meet the varying demands placed upon it.
- increase public, economic and environmental benefit
- actively seek the involvement of communities
- take a collaborative and pragmatic approach to responsibilities and resources
- increase investment in the countryside access network

We will do this by delivering:

1. **A well-managed Access Network.** We will establish a well-signed, maintained and accessible network of routes enabling access for all to the countryside.
2. **A well connected Access Network.** We will develop an integrated green infrastructure network that provides opportunities for all users; improving connectivity and all abilities access to the countryside.
3. **A well-protected Natural and Historic Environment.** We will help protect the environment through managed access and improved understanding of Norfolk's landscape, natural and

built heritage.

4. **A well promoted Access Network.** We will improve promotion and increase use of the network through the delivery of a communication plan promoting all abilities access to Norfolk's outstanding countryside.
5. **A well informed Access Network.** We will keep up to date web-based spatial and database information making best use of new technologies for use by professionals, residents and visitors.
6. **A community Access Network.** We will increase the involvement of communities in the development and management of their local access network.
7. **A healthy Access Network.** We will improve the health and wellbeing of Norfolk residents and visitors encouraging active travel initiatives and leisure use of the access network.
8. **A valuable Access Network.** We will maximise the economic benefits to Norfolk businesses that are generated by residents and visitors through enjoyment of the coast and countryside.





## 3 Future user needs: user groups | All Abilities Access



### 3.1.1 People with Mobility or Visual Impairments Access for All

The network of public rights of way (PRoW) and trails should be, as far as possible, accessible to all types of user including the elderly, those with chronic health conditions including physical and mental disabilities, people with visual impairments and those with young families.

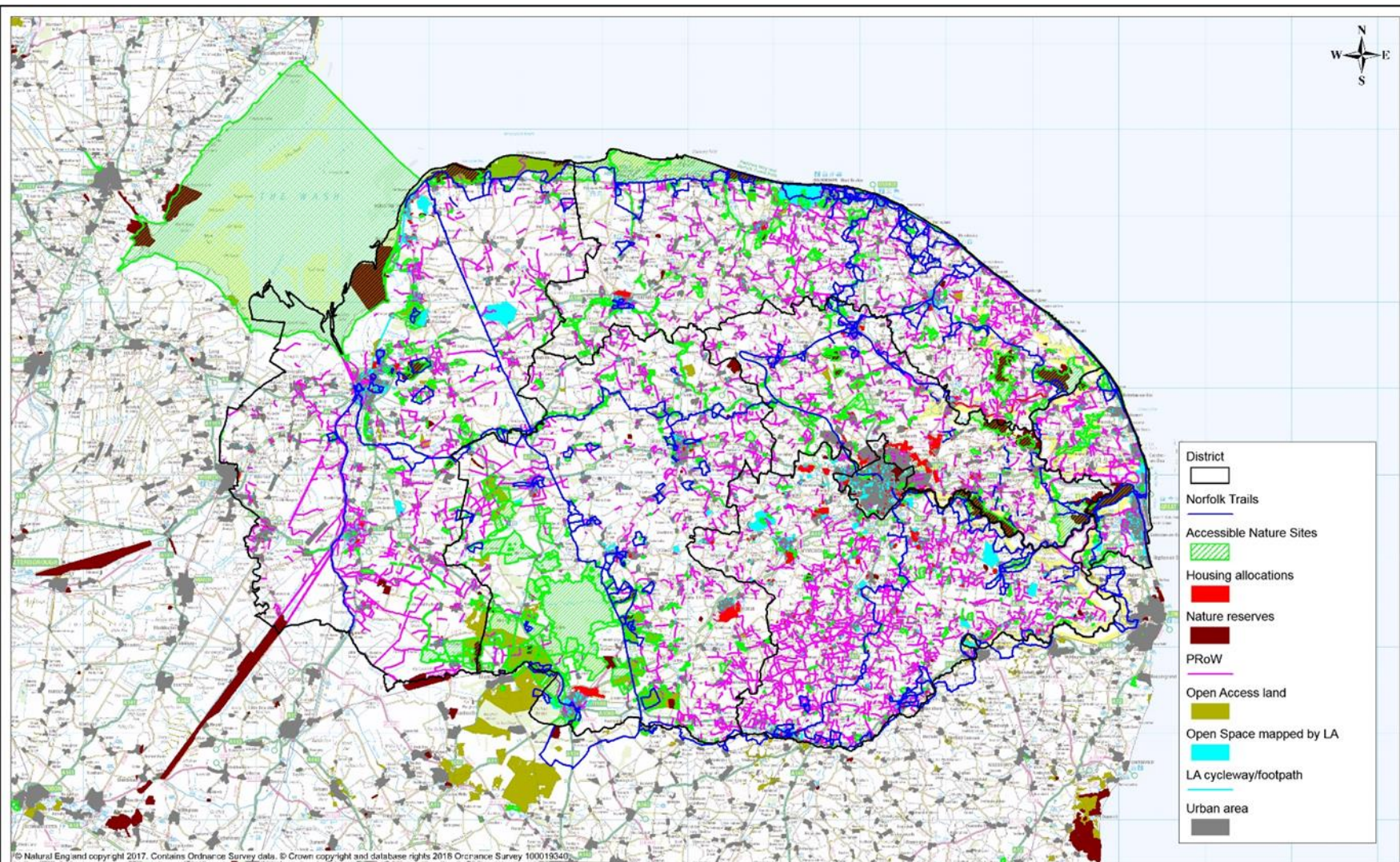
The physical needs of these groups of people in relation to the countryside access network are identified by the existing Rights of Way Improvement Plan (RoWIP) and the action plan pledges to identify and develop accessible routes as well as promoting these with partners. The Norfolk Health, Heritage and Biodiversity Walks developed between 2008 and 2011 ensured that each town provided some routes accessible to wheelchair and pushchair users. However, developing these walks highlighted the lack of accessible routes in the more rural locations and an obvious need to address this situation. Other circular walks and long distance trails have been upgraded in places to improve accessibility to more users but there are still gaps in the network and this is a high priority for the new NAIP.

The new Norfolk Access Improvement Plan (NAIP) will explore the opportunities to promote the countryside access network to a wider range of users. For many, finding, accessing and understanding the information in front of them poses a challenge in the first instance

and then there are issues of confidence, self-esteem and familiarity in going outdoors and venturing into the countryside. We need to build relationships with carers, groups and organisations that help and support people with chronic conditions so that they are given the best opportunities to discover and enjoy the countryside. Similarly we will need to find the most effective means of promoting the countryside access network to the elderly or those with young families.

### **Priority actions**

- Audit routes (PRoW and trails) to assess current provision for wider access such as surface condition and infrastructure suitability for wheelchairs and pushchairs or appropriateness of signage for users with visual impairments or mental health difficulties such as dementia.
- Conduct user needs assessments and undertake subsequent improvement of infrastructure and signage on trails and PRoW where needs are identified
- Develop promotional material suitable for a range of target users and ensure the website is accommodating for those who may have visual impairments.

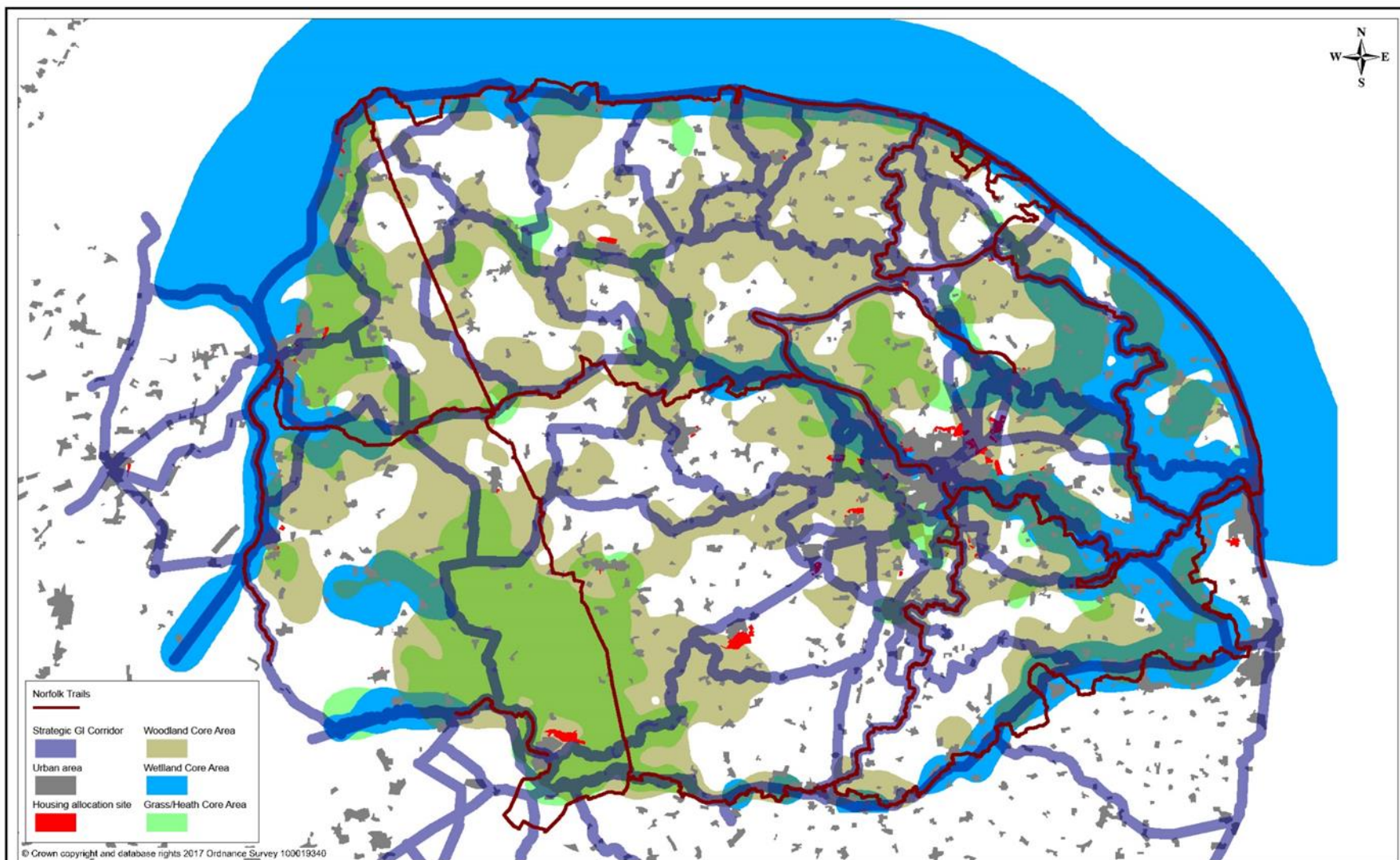


## Current GI Assets

Scale 1:400000

Compiled by K Rushen on 24 October 2017





## Norfolk Green Infrastructure Map

Strategic GI corridors and habitat core areas

Scale 1:350000

Compiled by M. Horlock on 18 October 2017

**NBIS**  
Norfolk Biodiversity  
Information Service

Norfolk Biodiversity Information Service  
County Hall  
Martineau Lane  
Norwich NR1 2SG

Tel: 01603 224458 Fax: 01603 223219





# GREAT CYCLE MAP YARMOUTH

1st Edition March 2017 • Tidal and overwater



## Wind and Waves Cycle

**1 Wind Energy Museum**  
The only historical collection of wind engines in Britain demonstrating the history of Norfolk drainage, with an example of a working scoop wheel. Many of the mills featured are some of the last remaining examples of their kind in the UK.

**2 Thurne Mill**  
A white painted drainage mill, built in 1820 by England & Co of Ludham. In 1885 a new turbine pump and patent sails were added, which enabled the sails to be adjusted without stopping the mill. Currently in private ownership and open on selected afternoons between April and September, otherwise by private appointment only.

**3 St Mary's Church, West Somerton**  
Perfectly centred between Martham and Winterton, this round-towered church dates back to the Normans. It features a 13th century thatched roof and houses the tombstone of Robert Hales, the Norfolk giant and Victorian celebrity who measured a towering height of 7ft 6inches.

**4 St Mary's the Virgin Church, Hemsby**  
A medieval church with a tall tower dating from the early 14th century. Built by the monks of Norwich Cathedral Priory. The church houses a vault depicting key scenes in the Christian faith, including the nativity, resurrection and ascension of Christ.

**5 Winterton beach**  
If you're looking to get away from the hustle and bustle of the 3000 strong beach, the shore



The main map shows the coastal area of Great Yarmouth with various cycle routes highlighted in different colors: red for the Wind and Waves Cycle, blue for the Historic Churches Cycle, and yellow for the Big Beach Cycle. Key locations marked include Martham, Hemsby, West Somerton, and Winterton-on-Sea. The map also shows the River Great Ouse and the surrounding landscape.





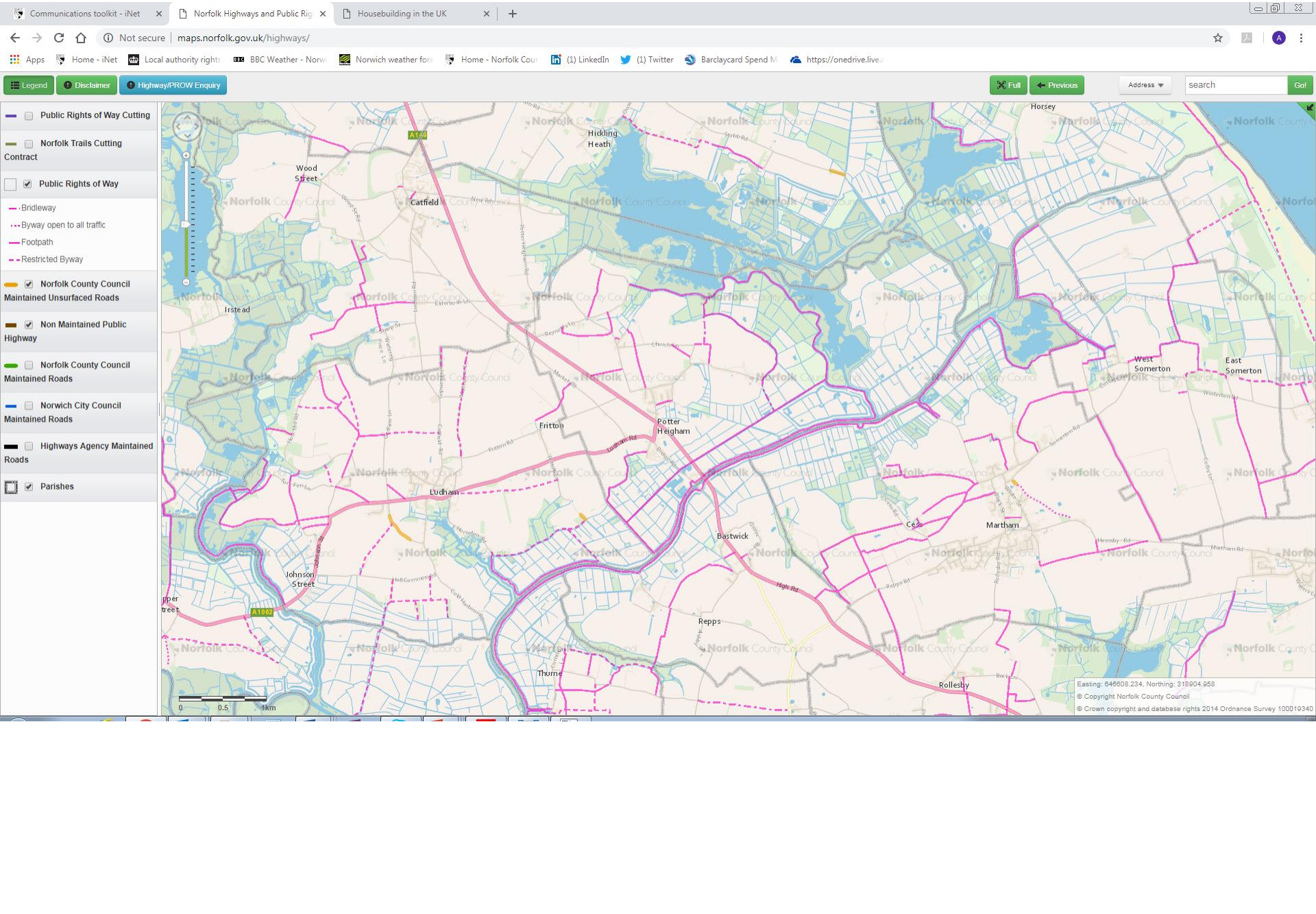
# Norfolk County Council

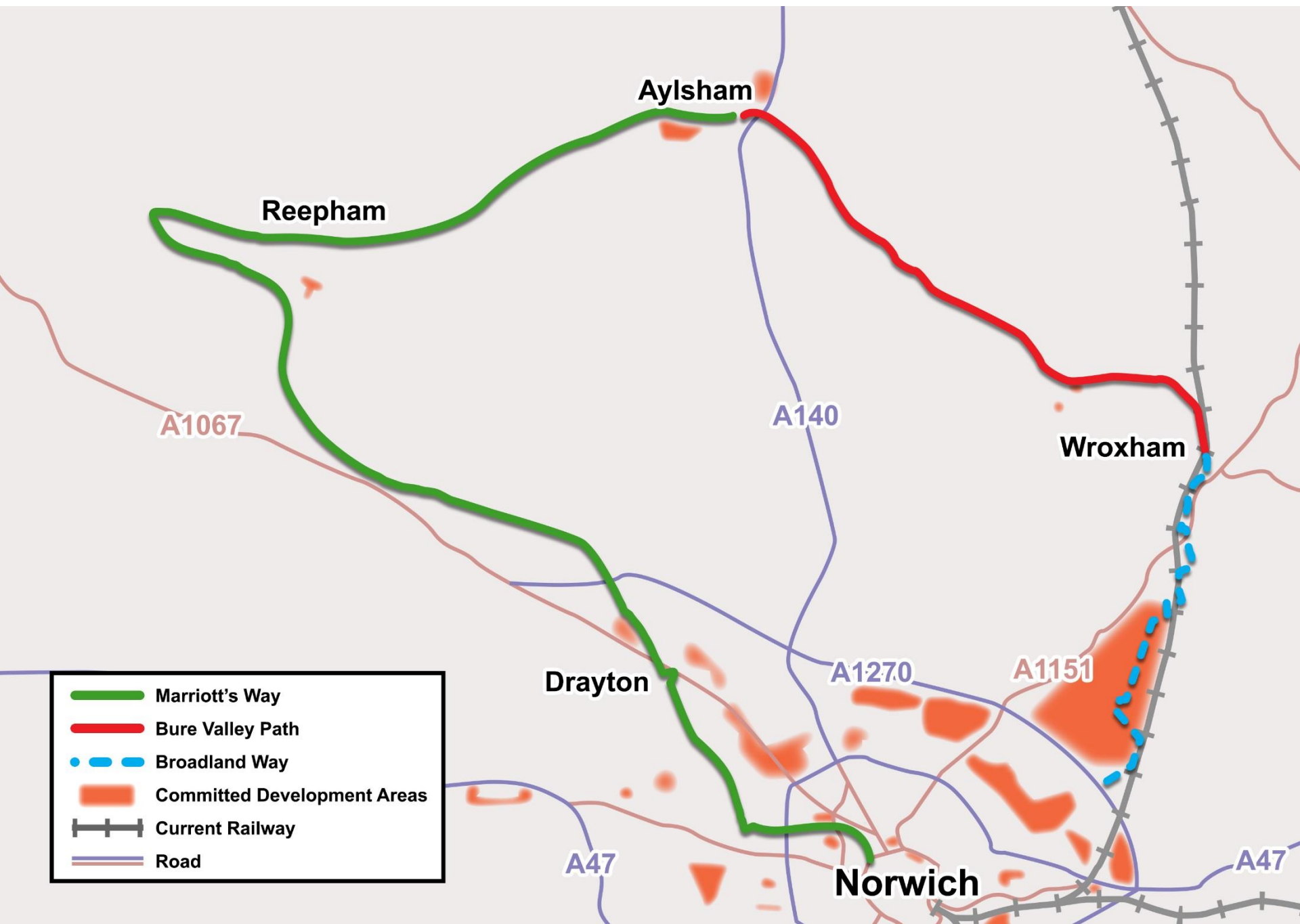
Sidebar Search Layers Previous Zoom in for public transport Zoom in for points of interest



Easting: 655  
© Copyright  
© Crown copyright










## Session 2: Mooring provision



Mooring Strategy	
Criteria	Agreed standard
Target (mooring sites)	Objective: Maintain as a minimum the present number of moorings (Moorings Audit)
Distribution	Max 30 minutes spacing
Capacity and usage	Work to be carried out
Tenure	Seek to increase freehold sites to secure long-term future for use as 24-hour moorings
Quality and design	Use range of alternative designs dependant on site; high quality; minimal environmental impacts
Other considerations	
Site availability (new moorings)	
Lease costs	
Piling liability - repiling costs for steel sheet piling approx. £1,000 pm	
General ongoing maintenance liabilities	



A person with long hair, wearing a dark jacket with reflective stripes and a backpack, is seen from behind, sitting in a wooden canoe. They are holding a red paddle. The canoe is on a calm body of water, reflecting the vibrant sunset sky. The sun is low on the horizon, surrounded by dramatic, golden clouds. The water is still, creating a clear reflection of the sky and the person. The surrounding landscape is dark and silhouetted, with some reeds visible on the right side. The overall mood is peaceful and contemplative.

Thanks for  
your help