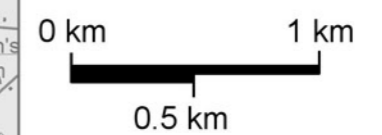
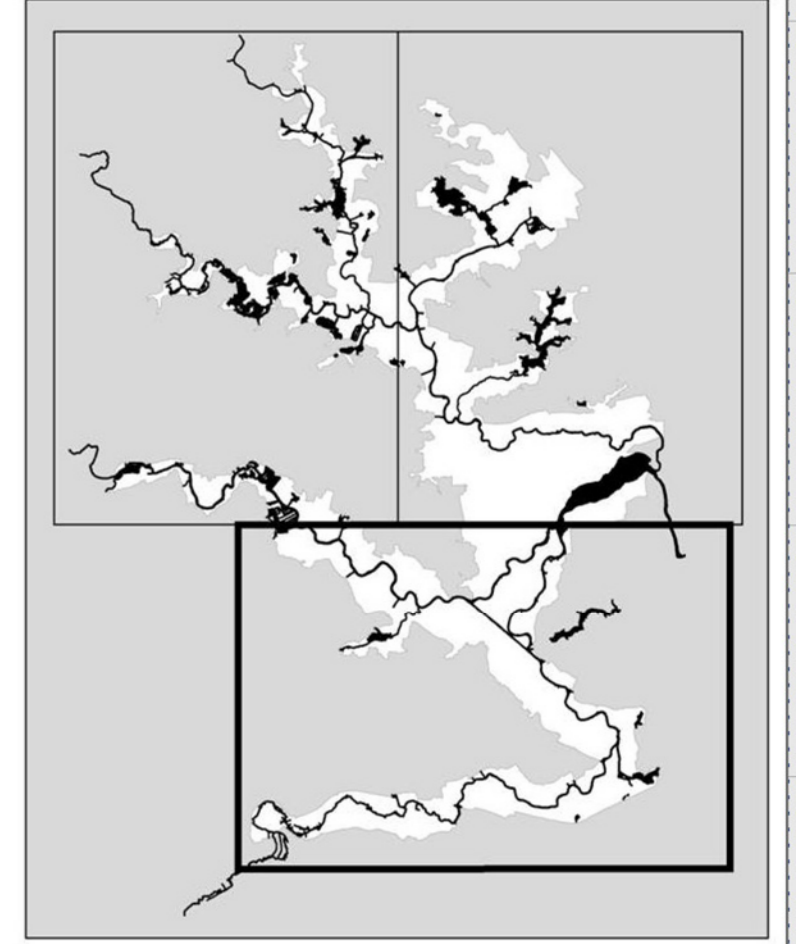


**Broads Local Plan
Nature Conservation Designations &
Heritage Assets plus Minerals and Waste**
South Scale 1:30,000
May 2019



Key

- Listed Mill
- Listed Building
- Local List
- Unlisted Site/Mill
- Scheduled Ancient Monument
- Registered Parks & Gardens
- Conservation Areas
- Minerals Extraction Sites
- Waste Management Sites
- Key Wastewater Treatment Works
- INTERNATIONAL (Special Areas of Conservation, Special Protection Areas (inc. potential), Ramsars)
- NATIONAL (Special Sites of Scientific Interest, National Nature Reserves)
- LOCAL (County Wildlife Sites, Local Nature Reserves)
- Outside Broads Area



© Crown copyright and database right 2019. Ordnance Survey 100021873. You are granted a non-exclusive, royalty free, revocable licence solely to view the Licensed Data for non-commercial purposes for the period during which the Broads Authority makes it available. You are not permitted to copy, sub-license, distribute or otherwise make available the Licensed Data to third parties in any form. Third party rights to enforce the terms of this licence shall be reserved to Ordnance Survey. © Historic England 2019. © Natural England 2019. Contains Ordnance Survey data. The Historic England GIS Data contained in this material was obtained on 24/04/2019. The most up-to-date Historic England GIS Data can be obtained from www.historicengland.org.uk. © Norfolk County Council. © Suffolk Biological Records Service.

**Inset Map
4. Cantley**

**Inset Map
17. St
Olaves**

**Inset
Map 16.
Somerleyton**

**Inset Map 14.
Oulton Broad**

**Inset Map 7.
Ditchingham Dam**

**Inset Map 2.
Beccles**

