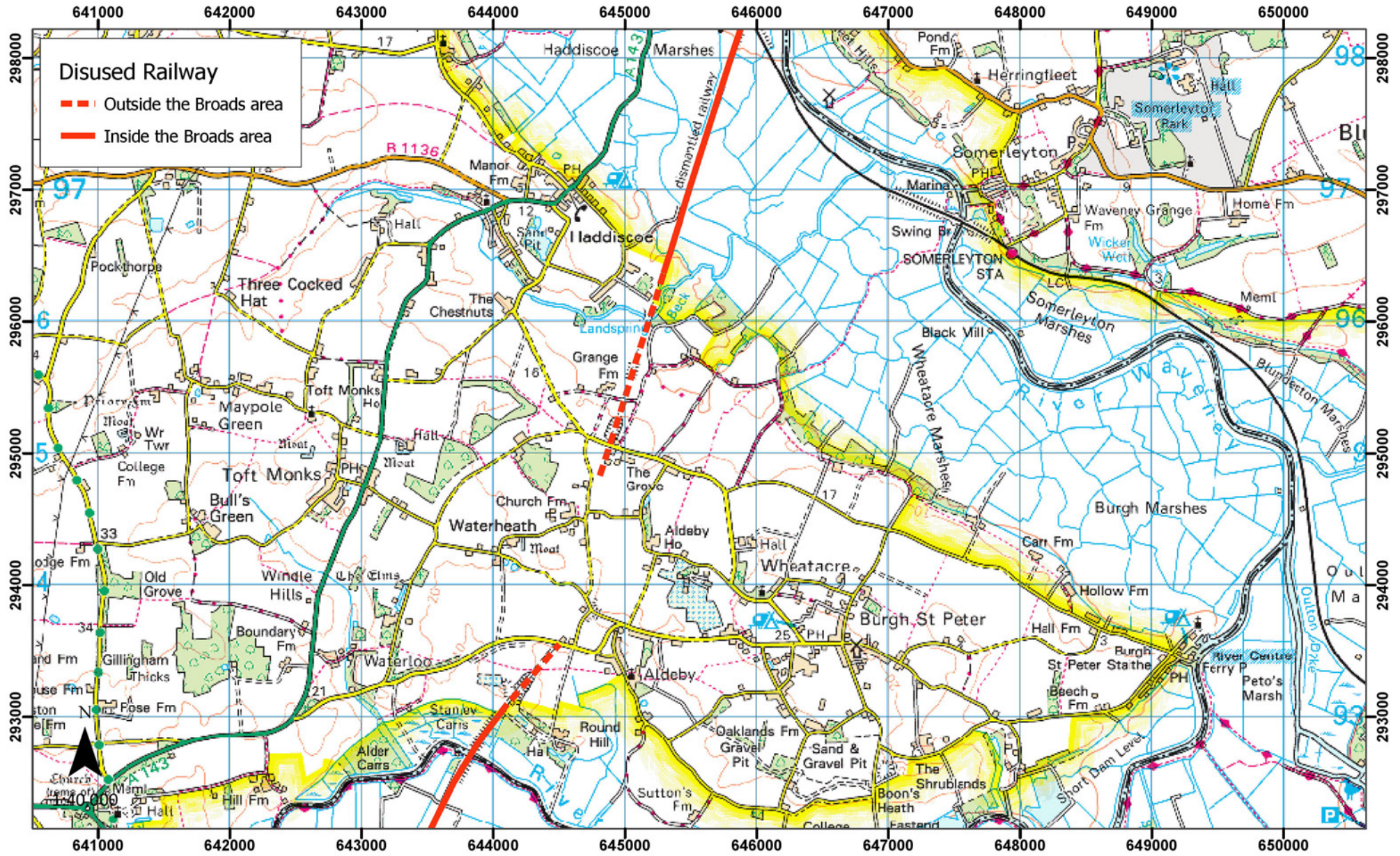
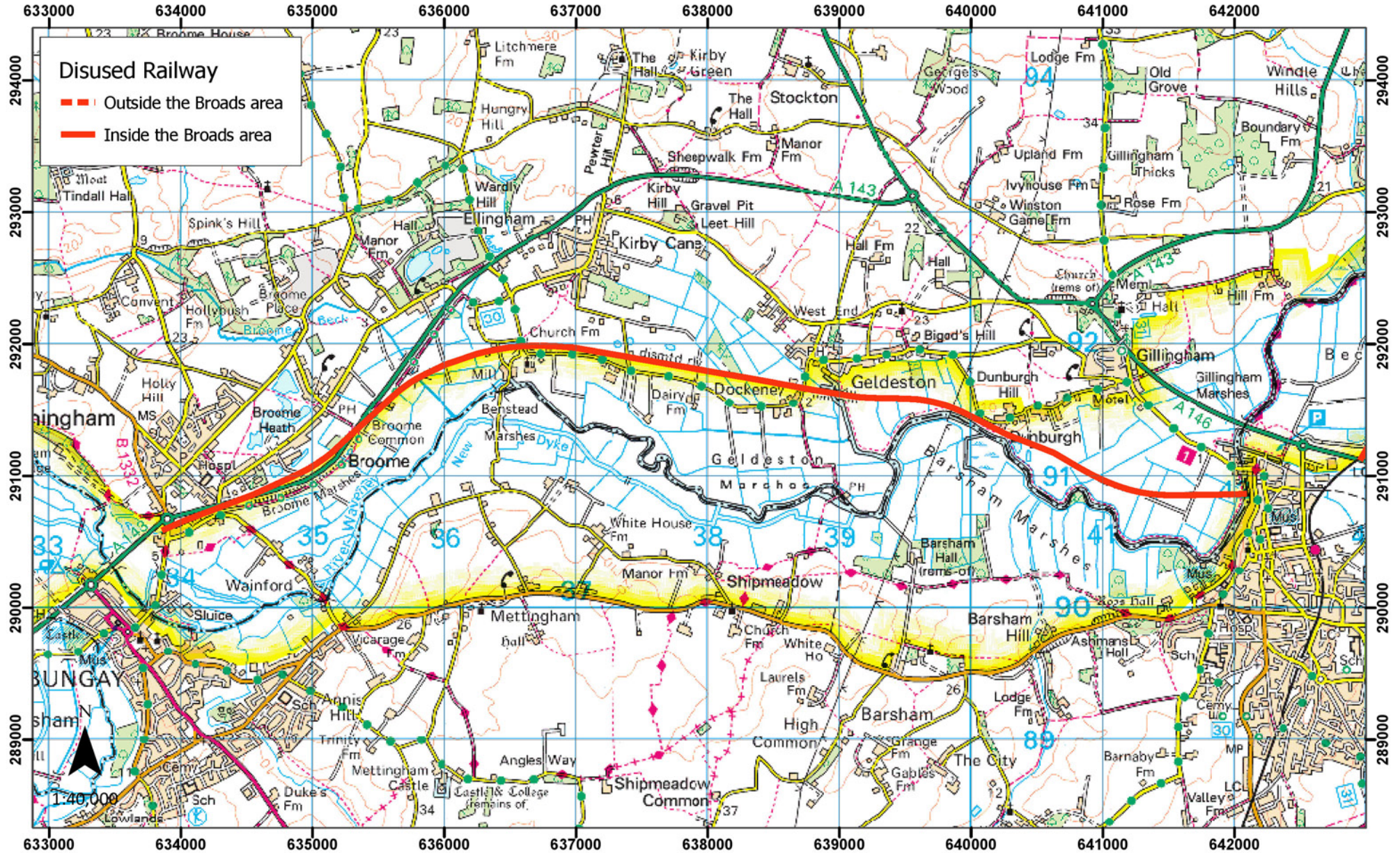


Local Plan for the Broads - May 2019
 SSTRACKS: Former rail trackways
 Beccles to Haddiscoe



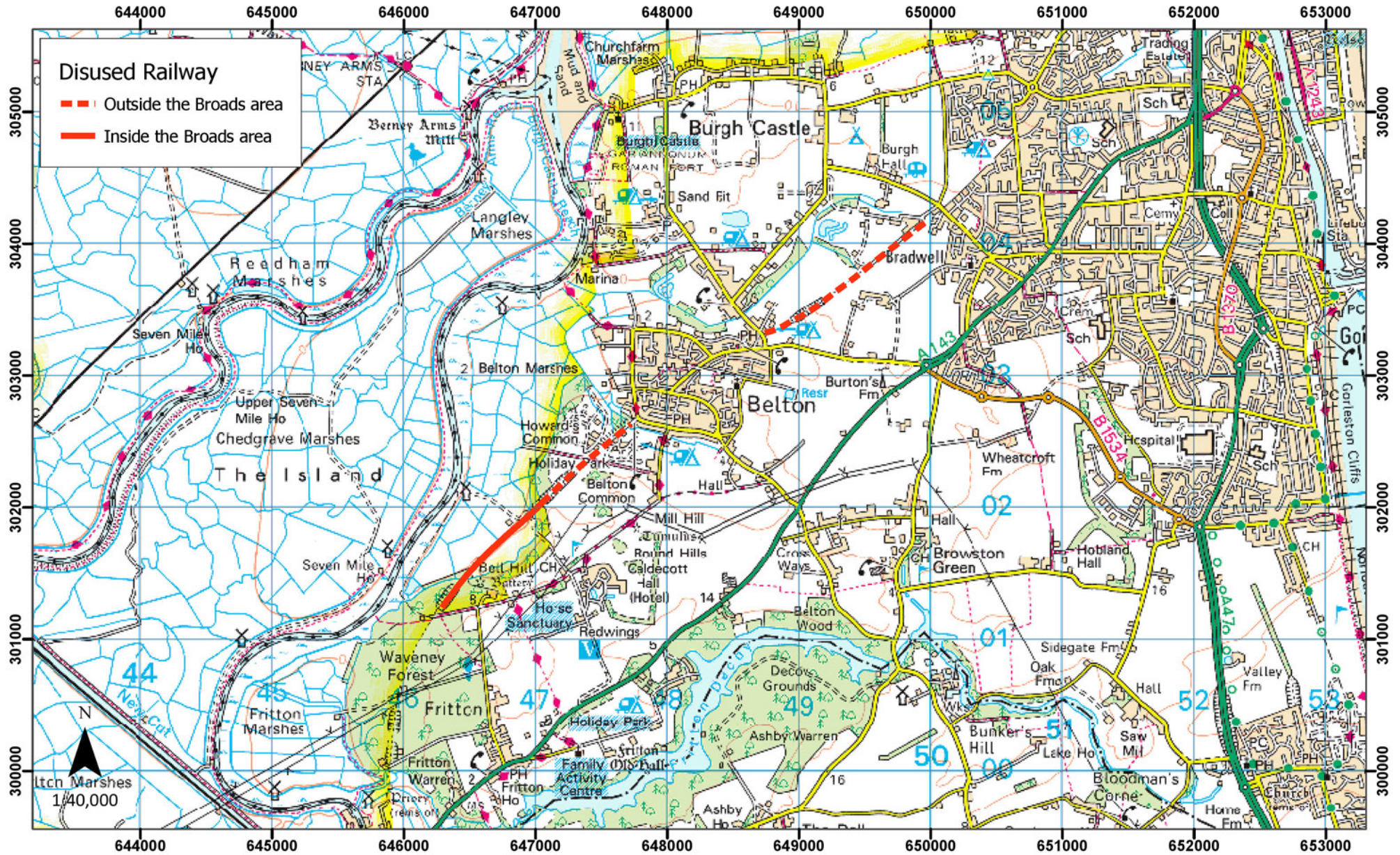
© Crown copyright [and database rights] 2019 Ordnance Survey 100021573. You are granted a non-exclusive, royalty free, revocable licence solely to view the Licensed Data for non-commercial purposes for the period during which the Broads Authority makes it available. You are not permitted to copy, sub-license, distribute, sell or otherwise make available the Licensed Data to third parties in any form. Third party rights to enforce the terms of this licence shall be reserved to Ordnance Survey.

Local Plan for the Broads - May 2019
SSTRACKS: Former rail trackways
Ditchingham to Beccles



© Crown copyright [and database rights] 2019 Ordnance Survey 100021573. You are granted a non-exclusive, royalty free, revocable licence solely to view the Licensed Data for non-commercial purposes for the period during which the Broads Authority makes it available. You are not permitted to copy, sub-license, distribute, sell or otherwise make available the Licensed Data to third parties in any form. Third party rights to enforce the terms of this licence shall be reserved to Ordnance Survey.

Local Plan for the Broads - May 2019
 SSTRACKS: Former rail trackways
 Great Yarmouth to Fritton



© Crown copyright [and database rights] 2019 Ordnance Survey 100021573. You are granted a non-exclusive, royalty free, revocable licence solely to view the Licensed Data for non-commercial purposes for the period during which the Broads Authority makes it available. You are not permitted to copy, sub-license, distribute, sell or otherwise make available the Licensed Data to third parties in any form. Third party rights to enforce the terms of this licence shall be reserved to Ordnance Survey.