



Broads Authority Local Plan
Schedule of Modifications to Policies Maps.
January 2019

1.	Explanation	1
2.	Policies Maps Changes	3
	Appendix A: Showing the changes to the SFRA	5
	Appendix B: Additional areas relating to HOV1 and shown on Inset Map 11.	7
	Appendix C: New policy allocating residential moorings at Horning.....	8
	Appendix D: New policy allocating residential moorings at Somerleyton.....	9
	Appendix E: Improved policies map showing Hoveton Town Centre.....	10
	Appendix F: Improved BRU6 policies map.....	11
	Appendix G: Improved Waveney Meadow Open Space Policies Map.	12
	Appendix H: Amended key to show AONB on North East heritage and minerals map.....	13
	Appendix I: Amended flood risk policy maps for Beccles and Oulton Broad.	14

1. Explanation

- The proposed changes below are expressed in the form of a red ~~strikethrough~~ for deletions and blue underlining for additions of text.
- Main modifications are given the reference MM.
- Additional minor modifications are given the reference AM.
- Changes to policies maps are given the reference PM.
- Other instructions or explanations are set out in *italics*.
- The page numbers and paragraph numbering below refer to the publication local plan as published, and do not take account of the deletion or addition of text.
- For reference, the following table shows the policy reference number of the Publication version of the Local plan when compared to the Modifications version of the Local Plan – for DM only as there are no changes to SP policies or the Sites Specifics Policies in terms of their numbering.
- All tables are ordered by page number of the Publication version of the Local Plan.
- On occasion, where a policy is subject to a few changes, it is easier to copy over the entire policy into an appendix with the changes shown.
- For the avoidance of doubt, these changes will only come into force, if indeed they are supported through the examination of the Local Plan, on adoption of the final Local Plan.
- A consultation on these modifications runs until 4pm on 15 March 2019.

Publication Policy	Modifications Policy	Publication Policy	Modifications Policy	Publication Policy	Modifications Policy	Publication Policy	Modifications Policy
PUBDM1	MODDM2	PUBDM13	MODDM14	PUBDM25	MODDM26	PUBDM37	MODDM38
PUBDM2	MODDM3	PUBDM14	MODDM15	PUBDM26	MODDM27	PUBDM38	MODDM39
PUBDM3	MODDM4	PUBDM15	MODDM16	PUBDM27	MODDM28	PUBDM39	MODDM40
PUBDM4	MODDM5	PUBDM16	MODDM17	PUBDM28	MODDM29	PUBDM40	MODDM41
PUBDM5	MODDM6	PUBDM17	MODDM18	PUBDM29	MODDM30	PUBDM41	MODDM42
PUBDM6	MODDM7	PUBDM18	MODDM19	PUBDM30	MODDM31	PUBDM42	MODDM43
PUBDM7	MODDM8	PUBDM19	MODDM20	PUBDM31	MODDM32	PUBDM43	MODDM44
PUBDM8	MODDM9	PUBDM20	MODDM21	PUBDM32	MODDM33	PUBDM44	MODDM45
PUBDM9	MODDM10	PUBDM21	MODDM22	PUBDM33	MODDM34	PUBDM45	MODDM46
PUBDM10	MODDM11	PUBDM22	MODDM23	PUBDM34	MODDM35	PUBDM46	MODDM47
PUBDM11	MODDM12	PUBDM23	MODDM24	PUBDM35	MODDM36	PUBDM47	MODDM48
PUBDM12	MODDM13	PUBDM24	MODDM25	PUBDM36	MODDM37	PUBDM48	MODDM49
						PUBDM49	MODDM50

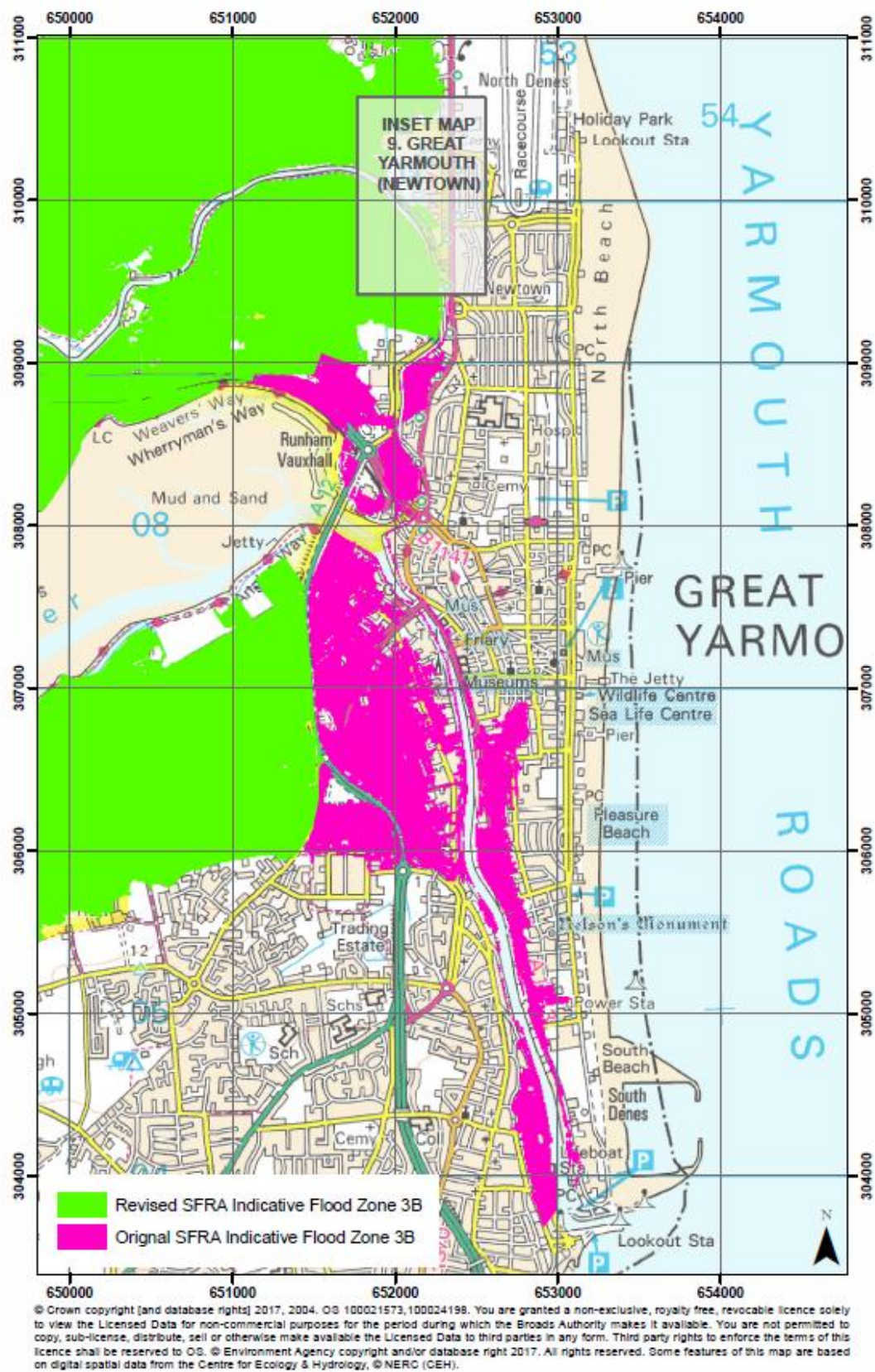
2. Policies Maps Changes

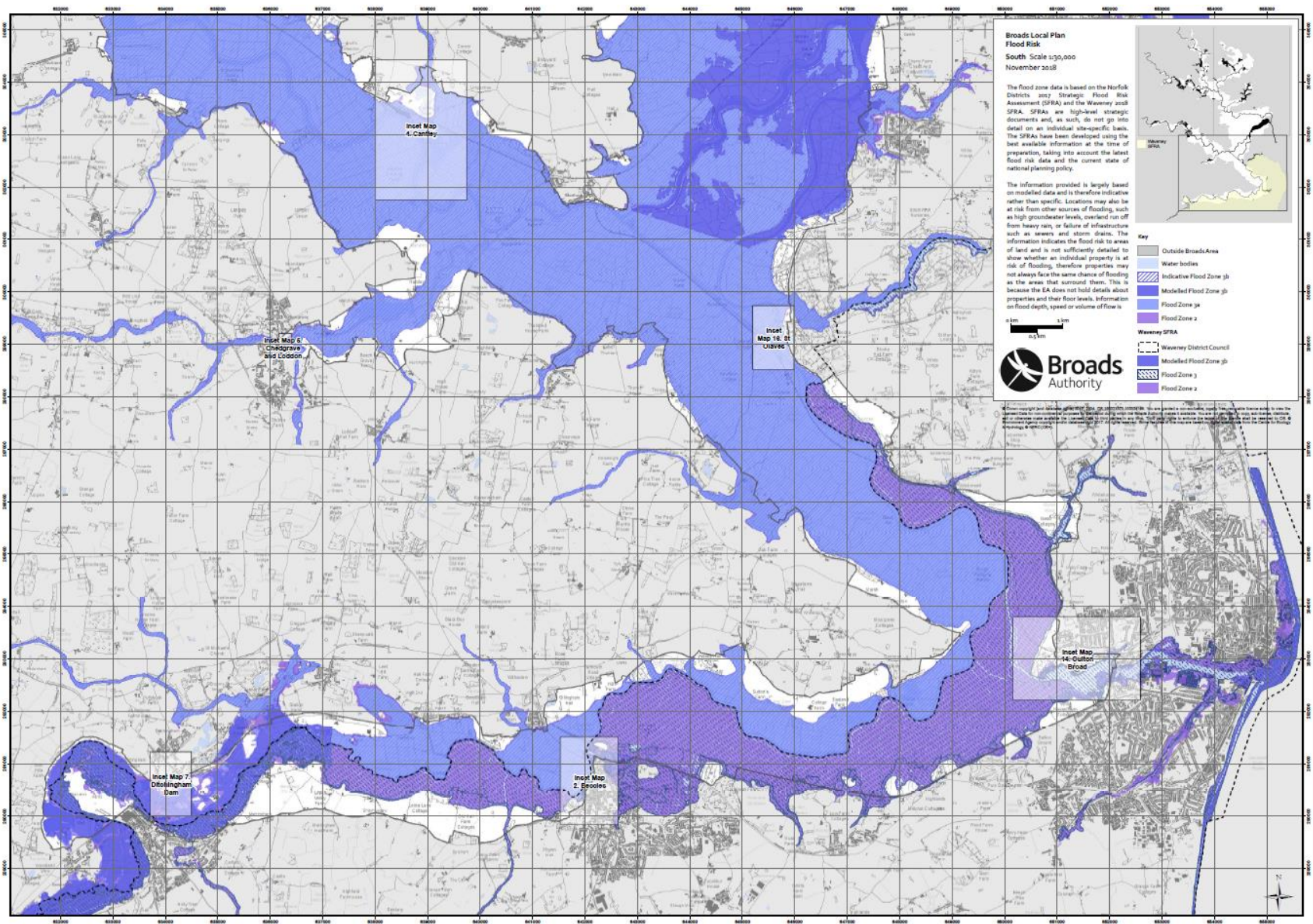
Ref.	Page No. (From Broads Local Plan Pre- Submission)	Policy/ Para. No. (From Broads Local Plan Pre- Submission)	Proposed Change	Reason for change
P1	All policies maps	All policies maps	<i>Remove 'PUB' as prefix to all policies.</i>	<i>On adoption, policies will either be SPxx, DMxx or SSxx. For the modifications consultation, policies will be 'MOD'.</i>
P2	New policies map	New policies map in Horning bundle.	<i>Add to Horning Bundle the policies map at Appendix C.</i>	<i>To reflect additional allocation for residential moorings at Horning.</i>
P3	New policies map	New policies map	<i>New map for Somerleyton at Appendix D.</i>	<i>To reflect additional allocation for residential moorings at Somerleyton.</i>
P4	Policies map	PUBBRU6 Map 3a.	<i>Insert new policies map as shown in Appendix F.</i>	<i>To reflect changes to the basin on site.</i>
P5	Policies map	Map 11. main map for Hoveton and Wroxham, page 2.	<i>Remove the yellow shading from the policies and add the Primary Shopping Area. See Appendix E.</i>	<i>To better show parts in NNDC and the Broads Authority Executive Area as well as show the Primary Shopping Area.</i>
P6	Policies Map	Overarching flood risk Policies Maps	<i>Amend to reflect the most up to date SFRA layers. See maps in Appendix A.</i>	<i>The extent of the indicative 3b layer was refined and has changed in the most recent SFRA. These changes are factual changes to reflect evidence and do not materially affect policies in that area. The changes only affect a small part of the urban part of Great Yarmouth as well as Waveney</i>

Ref.	Page No. (From Broads Local Plan Pre- Submission)	Policy/ Para. No. (From Broads Local Plan Pre- Submission)	Proposed Change	Reason for change
				<i>District.</i>
P7	Policies Map	Policies map 11. PUBHOV1	<i>Extra area of Green Infrastructure. See Appendix B.</i>	<i>Extra area of Green Infrastructure included on the policies map suggested by Wroxham Parish Council.</i>
P8	Policies Map	North East area heritage and minerals map	<i>Add the symbol of AONB to the key. See Appendix H.</i>	<i>The symbol was missing.</i>
P9	Policies Maps	Open space map bundle Waveney meadow	<i>Improve name – ‘Beccles – Waveney Meadow’. See Appendix G.</i>	<i>To clarify the location of the open space.</i>
P10	Policies Maps	Beccles flood risk map	<i>Amend to reflect the Waveney SFRA. See Appendix I.</i>	<i>To reflect evidence base for Waveney district.</i>
P11	Policies maps	Constraints	<i>Updated as at 4 December 2018.</i>	<i>To ensure the constraints are as up to date as possible.</i>
P12	Policies maps	Large A1 maps	<i>Show all listed buildings.</i>	<i>Currently shows listed mills only.</i>
P13	Policies maps	Constraints	<i>Local list layer added.</i>	<i>To ensure all constraints are included.</i>

Appendix A: Showing the changes to the SFRA

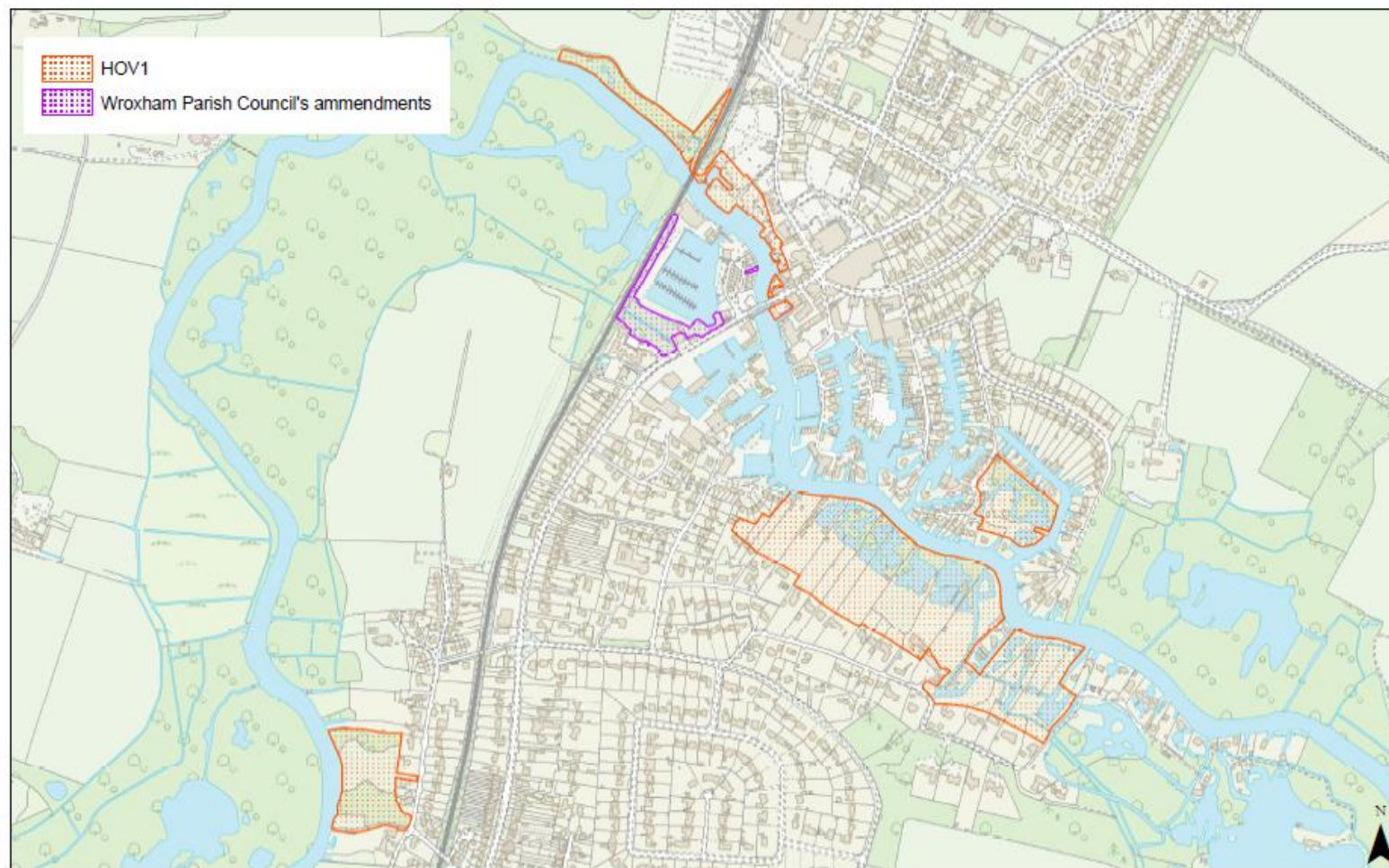
This does not materially affect the area that has a site specific policy.





Appendix B: Additional areas relating to HOV1 and shown on Inset Map 11.

GREEN INFRASTRUCTURE
Hoveton



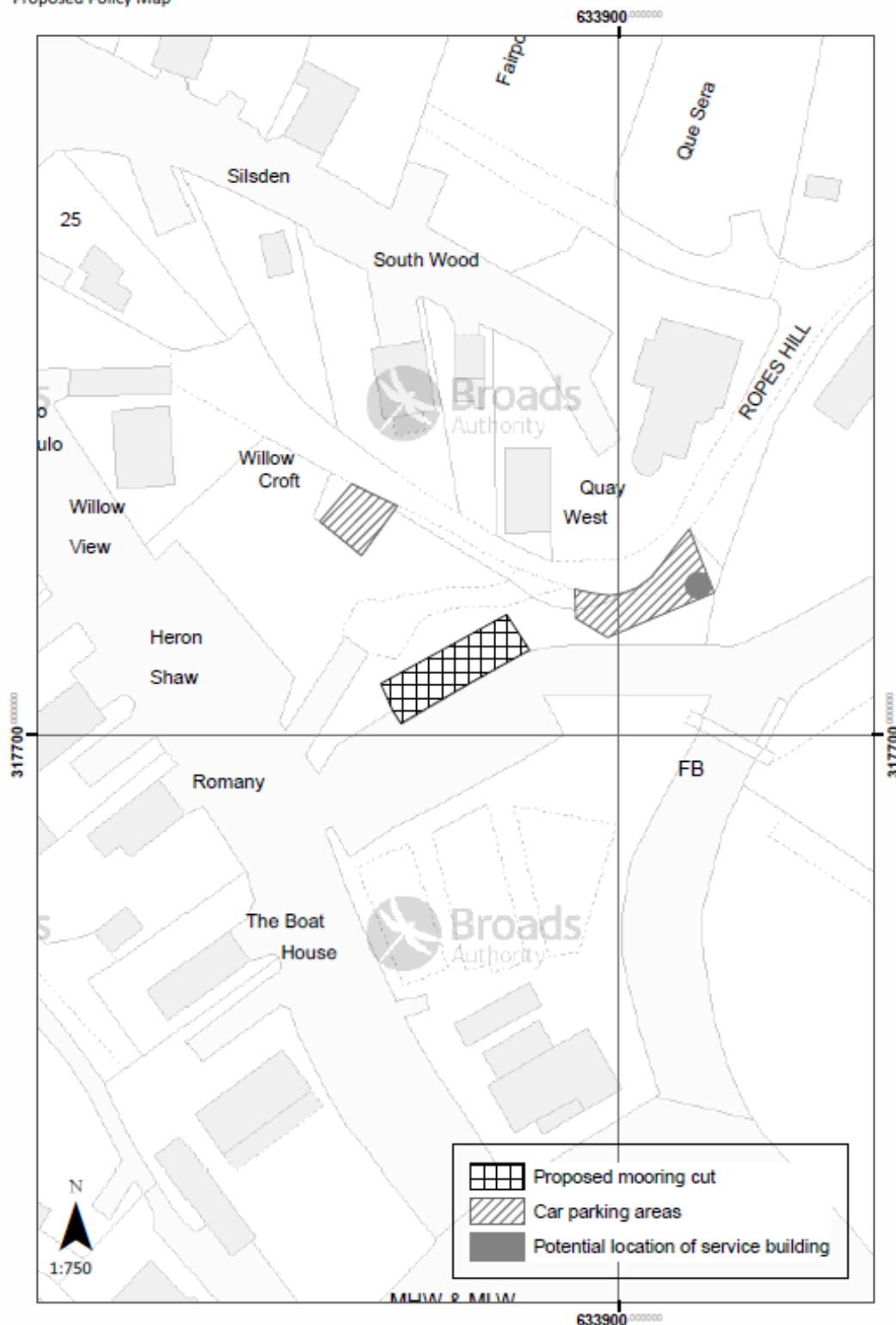
© Crown copyright [and database rights] 2017, 2004. OS 100021573, 100024158. You are granted a non-exclusive, royalty free, revocable licence solely to view the Licensed Data for non-commercial purposes for the period during which the Broads Authority makes it available. You are not permitted to copy, sub-license, distribute, sell or otherwise make available the Licensed Data to third parties in any form. Third party rights to enforce the terms of this licence shall be reserved to OS. © Environment Agency copyright and/or database right 2017. All rights reserved. Some features of this map are based on digital spatial data from the Centre for Ecology & Hydrology, © NERC (CEH).

Appendix C: New policy allocating residential moorings at Horning.

Broads Local Plan - Publication version - February 2018

Horning

Proposed Policy Map



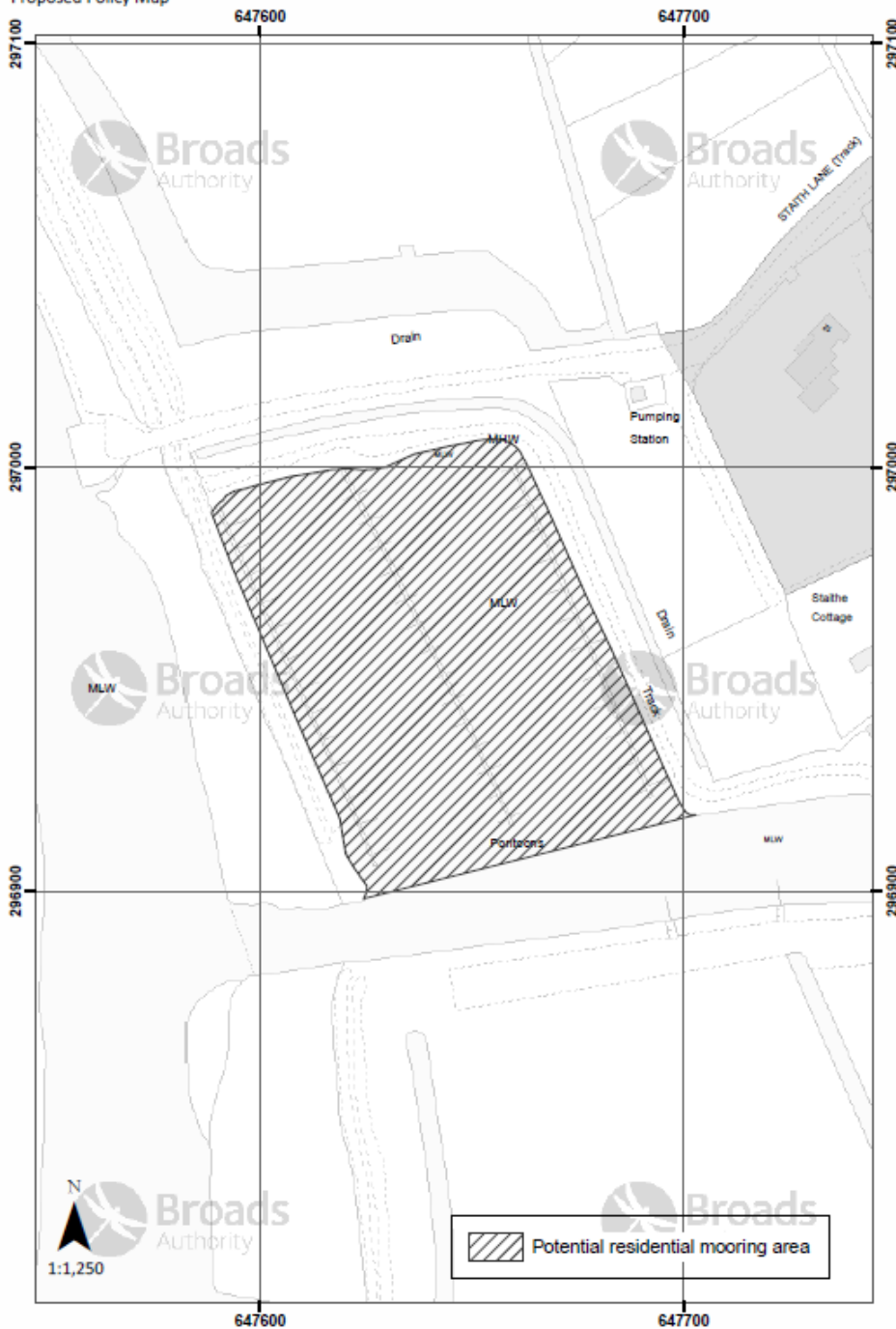
© Crown copyright [and database rights] 2018 OS 100021573. You are granted a non-exclusive, royalty free, revocable licence solely to view the Licensed Data for non-commercial purposes for the period during which the Broads Authority makes it available. You are not permitted to copy, sub-license, distribute, sell or otherwise make available the Licensed Data to third parties in any form. Third party rights to enforce the terms of this licence shall be reserved to OS. © Historic England 2017. Contains Ordnance Survey data.

Appendix D: New policy allocating residential moorings at Somerleyton.

Broads Local Plan - Publication version - February 2018

Somerleyton

Proposed Policy Map



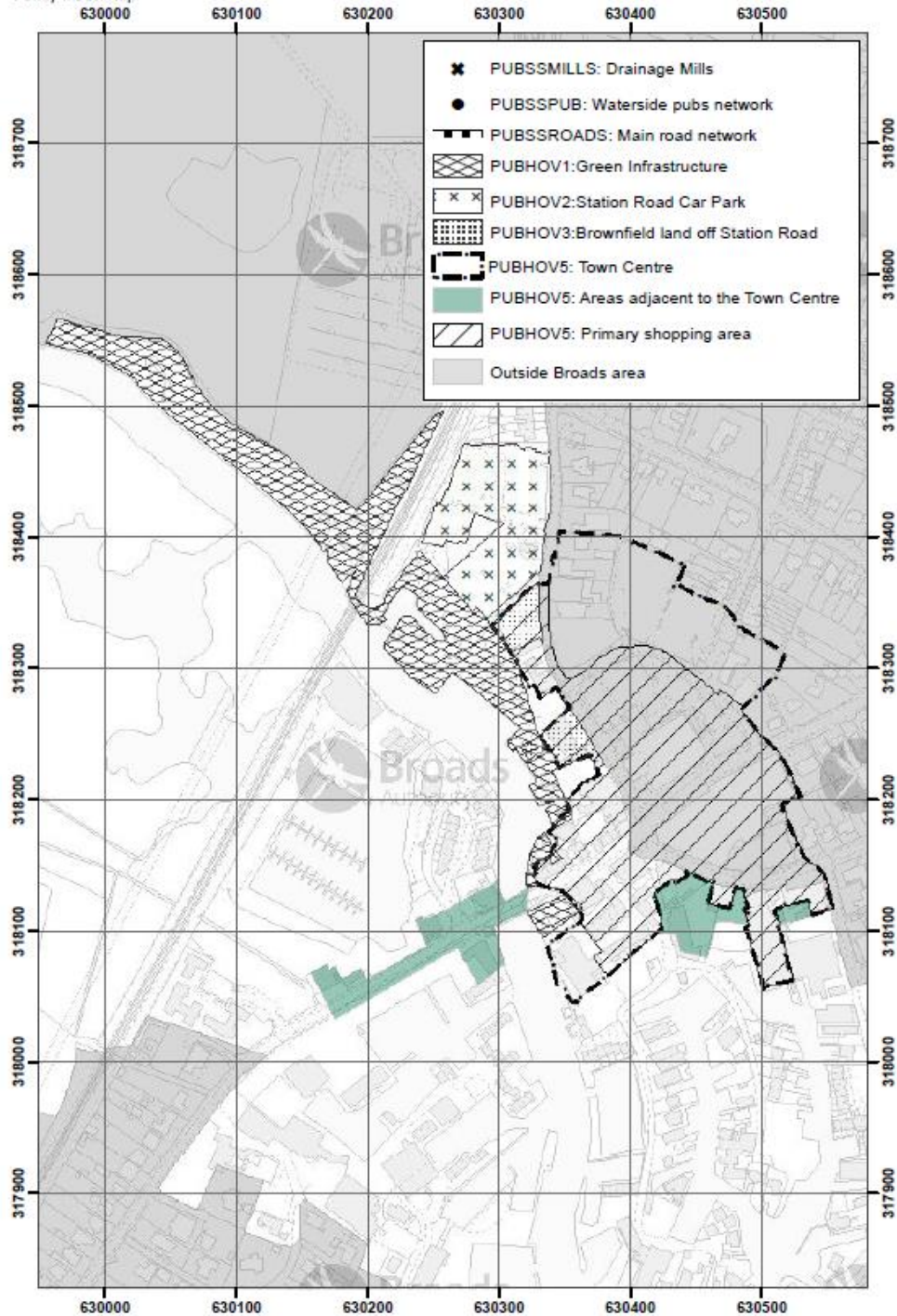
© Crown copyright (and database rights) 2018 OS 100021573. You are granted a non-exclusive, royalty free, revocable licence solely to view the Licensed Data for non-commercial purposes for the period during which the Broads Authority makes it available. You are not permitted to copy, sub-license, distribute, sell or otherwise make available the Licensed Data to third parties in any form. Third party rights to enforce the terms of this licence shall be reserved to OS. © Historic England 2017. Contains Ordnance Survey data.

Appendix E: Improved policies map showing Hoveton Town Centre

Broads Local Plan - Publication version - July 2017

11A. HOVETON & WROXHAM

Policy Inset Map



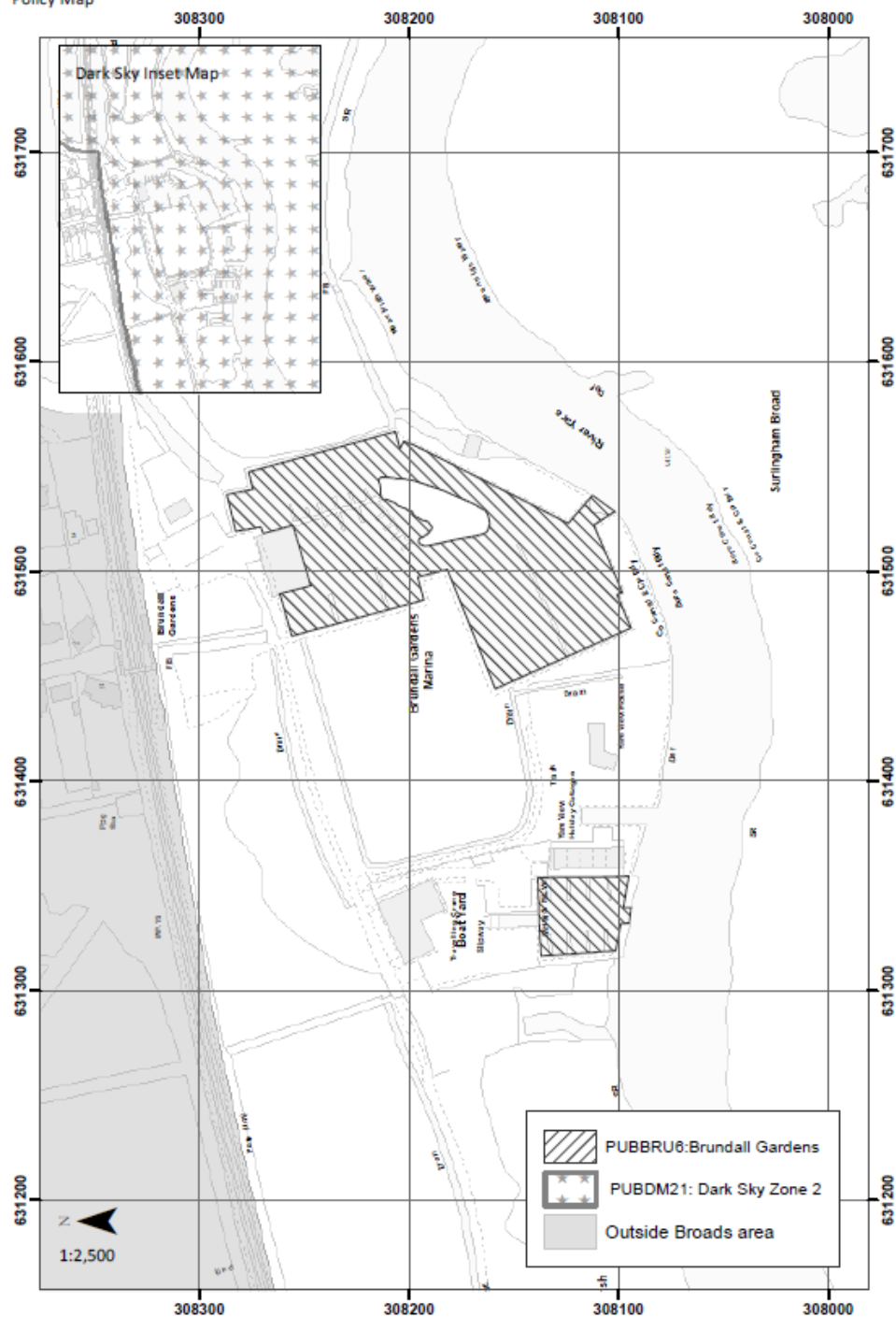
© Crown copyright (and database rights) 2017 OS 100021573. You are granted a non-exclusive, royalty free, revocable licence solely to view the Licensed Data for non-commercial purposes for the period during which the Broads Authority makes it available. You are not permitted to copy, sub-license, distribute, sell or otherwise make available the Licensed Data to third parties in any form. Third party rights to enforce the terms of this licence shall be reserved to OS. © Historic England 2017. Contains Ordnance Survey data.

Appendix F: Improved BRU6 policies map.

Broads Local Plan - Publication version - May 2018

3A. BRUNDALL GARDENS

Policy Map



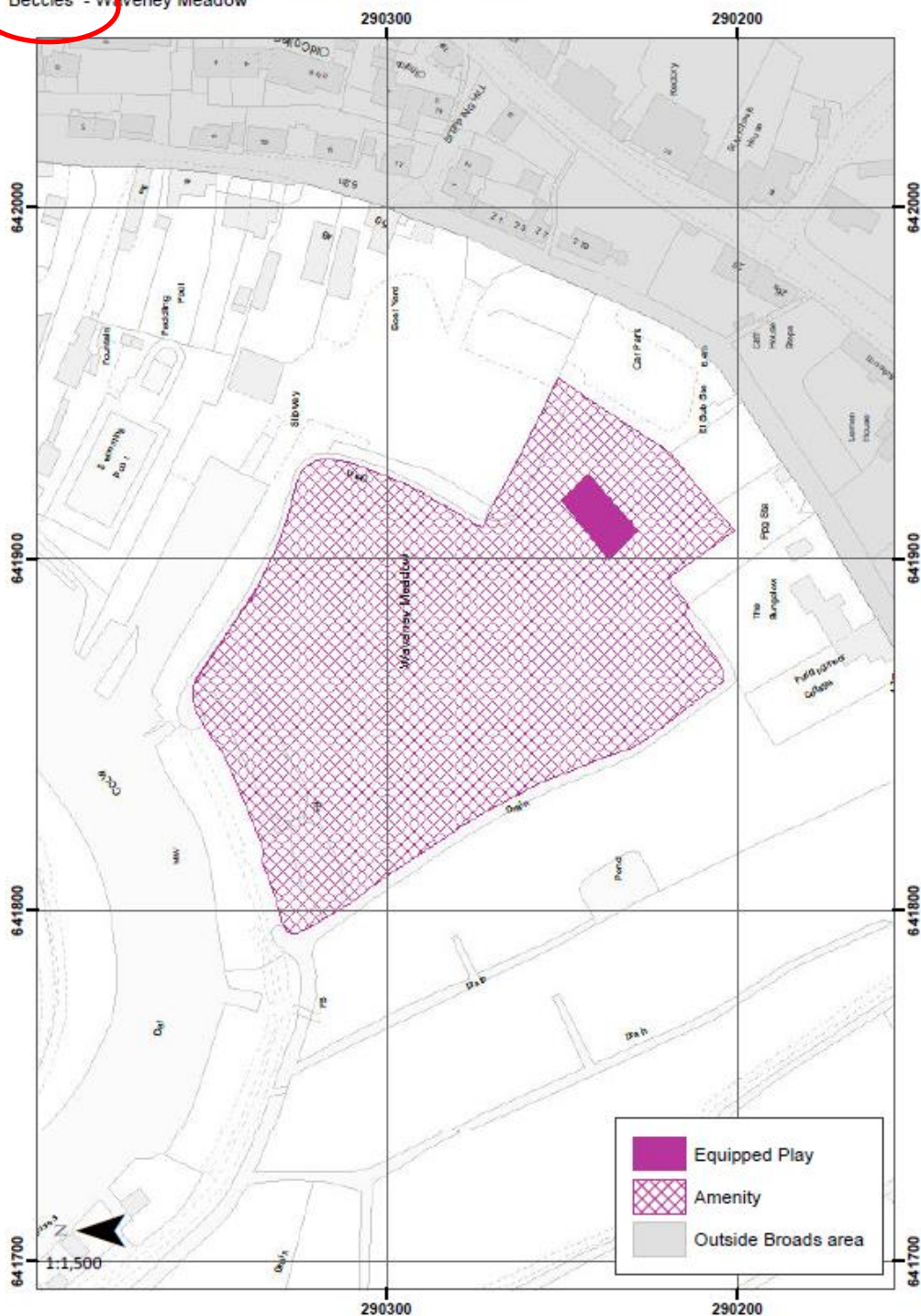
© Crown copyright [and database rights] 2017 OS 100021573. You are granted a non-exclusive, royalty free, revocable licence solely to view the Licensed Data for non-commercial purposes for the period during which the Broads Authority makes it available. You are not permitted to copy, sub-license, distribute, sell or otherwise make available the Licensed Data to third parties in any form. Third party rights to enforce the terms of this licence shall be reserved to OS. © Historic England 2017. Contains Ordnance Survey data.

Appendix G: Improved Waveney Meadow Open Space Policies Map.

Broads Local Plan - Publication version - July 2017

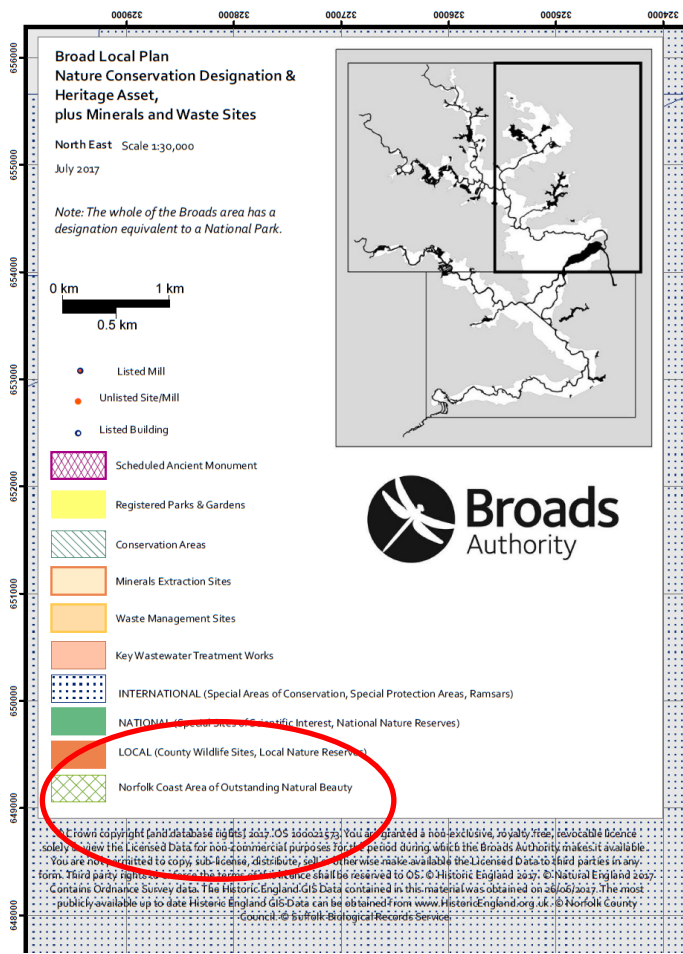
PUBDMB: OPEN SPACE ON LAND, PLAY, SPORTS FIELDS AND ALLOTMENTS

Beccles - Waveney Meadow



© Crown copyright (and database rights) 2017 OS 100021573. You are granted a non-exclusive, royalty free, revocable licence solely to view the Licensed Data for non-commercial purposes for the period during which the Broads Authority makes it available. You are not permitted to copy, sub-licence, distribute, sell or otherwise make available the Licensed Data to third parties in any form. Third party rights to enforce the terms of this licence shall be reserved to OS. © Historic England 2017. Contains Ordnance Survey data.

Appendix H: Amended key to show AONB on North East heritage and minerals map



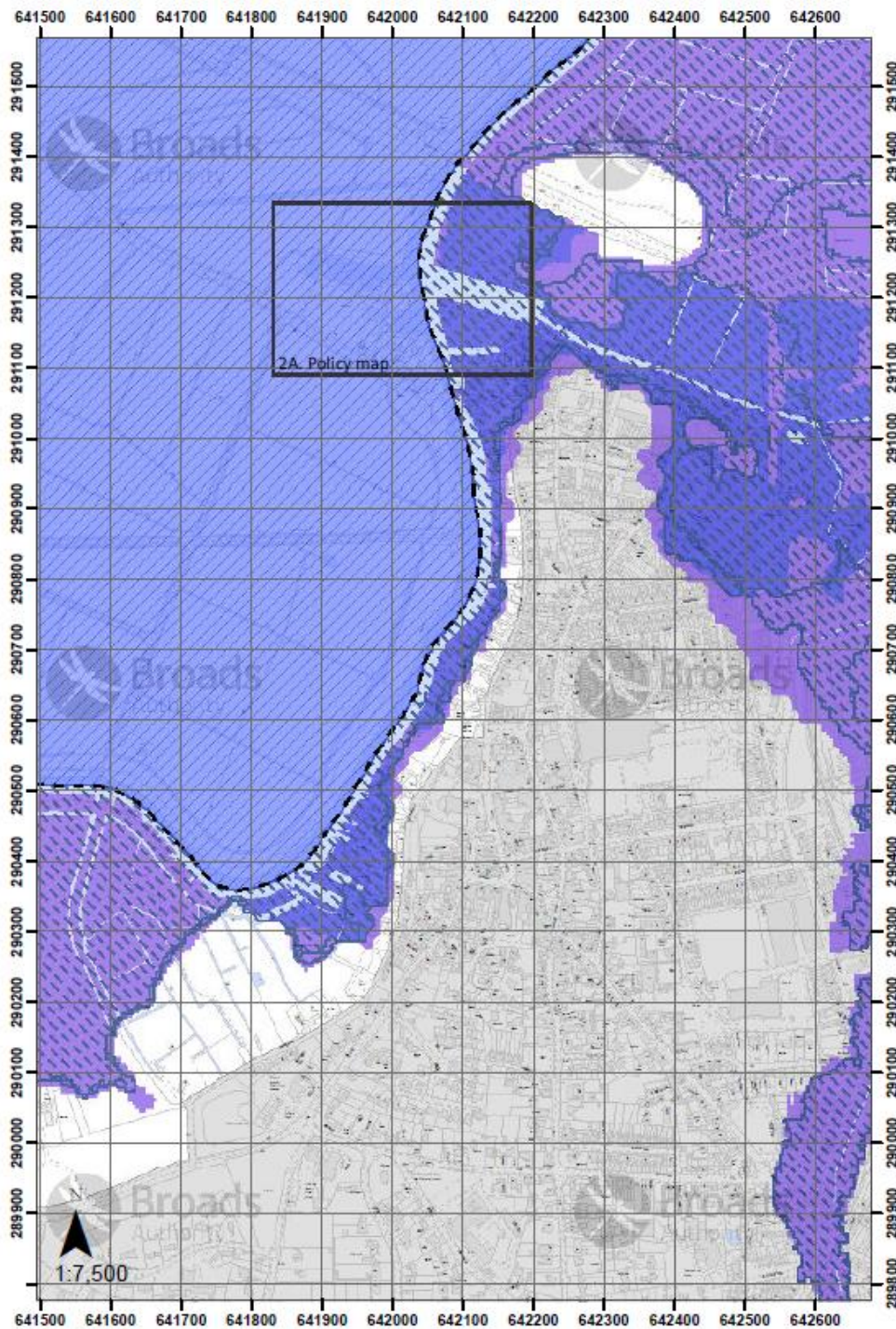
Appendix I: Amended flood risk policy maps for Beccles and Oulton Broad.

Broads Local Plan - Publication version - November 2018

2. BECCLES

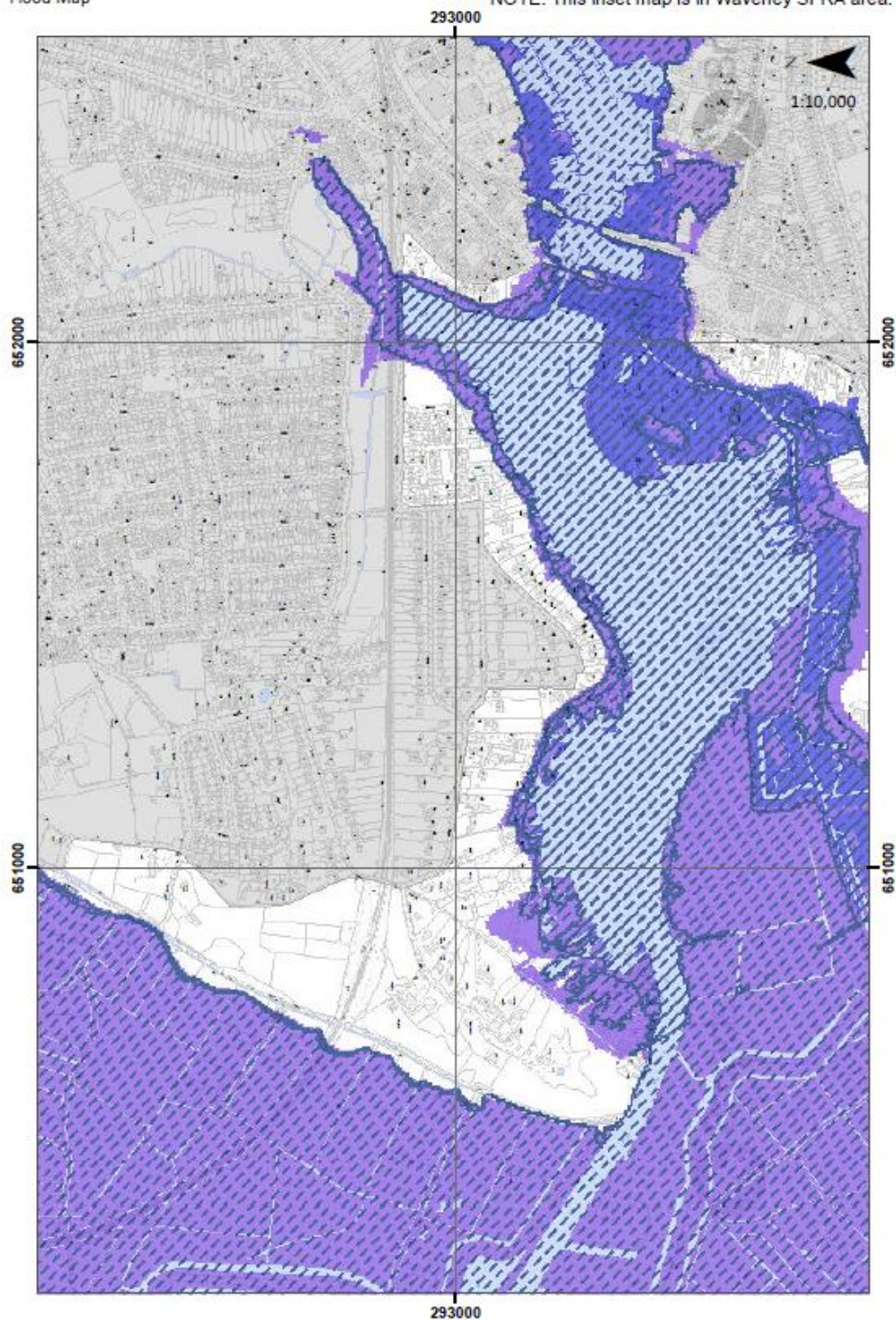
Flood Map

NOTE. This inset map includes the Waveney SFRA and Norfolk Districts SFRA.



© Crown copyright [and database rights] 2017, 2004. OS 100021573, 100024198. You are granted a non-exclusive, royalty free, revocable licence solely to view the Licensed Data for non-commercial purposes for the period during which the Broads Authority makes it available. You are not permitted to copy, sub-license, distribute, sell or otherwise make available the Licensed Data to third parties in any form. Third party rights to enforce the terms of this licence shall be reserved to OS. © Environment Agency copyright and/or database right 2017, 2018. All rights reserved. Some features of this map are based on digital spatial data from the Centre for Ecology & Hydrology, © NERC (CEH).

NOTE. This inset map is in Waveney SFRA area.



© Crown copyright [and database rights] 2017, 2004. OS 100021573, 100024198. You are granted a non-exclusive, royalty free, revocable licence solely to view the Licensed Data for non-commercial purposes for the period during which the Broads Authority makes it available. You are not permitted to copy, sub-licence, distribute, sell or otherwise make available the Licensed Data to third parties in any form. Third party rights to enforce the terms of this licence shall be reserved to OS. © Environment Agency copyright and/or database right 2017, 2018. All rights reserved. Some features of this map are based on digital spatial data from the Centre for Ecology & Hydrology, © NERC (CEH).