

**THE BROADS AUTHORITY**  
**TOWN AND COUNTRY PLANNING ACT 1990 (AS AMENDED)**  
**TOWN AND COUNTRY PLANNING (GENERAL PERMITTED DEVELOPMENT) (ENGLAND)**  
**ORDER 2015**

**NOTICE OF MAKING AN ARTICLE 4 DIRECTION**

NOTICE is hereby given that the Broads Authority have made a non-immediate Article 4 Direction on 12<sup>th</sup> of May 2021, under Article 4(1) of the Town and Country Planning (General Permitted Development) (England) Order 2015, as amended.

The Direction relates to any other alteration to the roof of a dwellinghouse being development comprised in Class C of Part 1 of Schedule 2 to the Order, and removes Permitted Development rights for this type of development from the date when the Direction comes into force. Planning permission will therefore be required for such works once the Article 4 Direction is in force.

The Article 4 Direction applies to the area shown within the hatched purple line on the attached plan. This Direction is made in order to protect the visual amenity of this part of Belaugh Conservation Area.

A copy of the Direction, including a map defining the area covered, can be viewed at the Broads Authority's office at Yare House, 62-64 Thorpe Road, Norwich, NR1 1RY or on the Authority's website at [www.broads-authority.gov.uk/about-us/how-we-work/transparency/consultations](http://www.broads-authority.gov.uk/about-us/how-we-work/transparency/consultations).

Representations may be made concerning the Article 4 Direction between 12 May and 7 July 2021. If you wish to make a representation you may do so by email to [planning@broads-authority.gov.uk](mailto:planning@broads-authority.gov.uk) or by post to the Broads Authority, Yare House, 62-64 Thorpe Road, Norwich, NR1 1RY. Any representations must be received by 5pm on 7 July 2021.

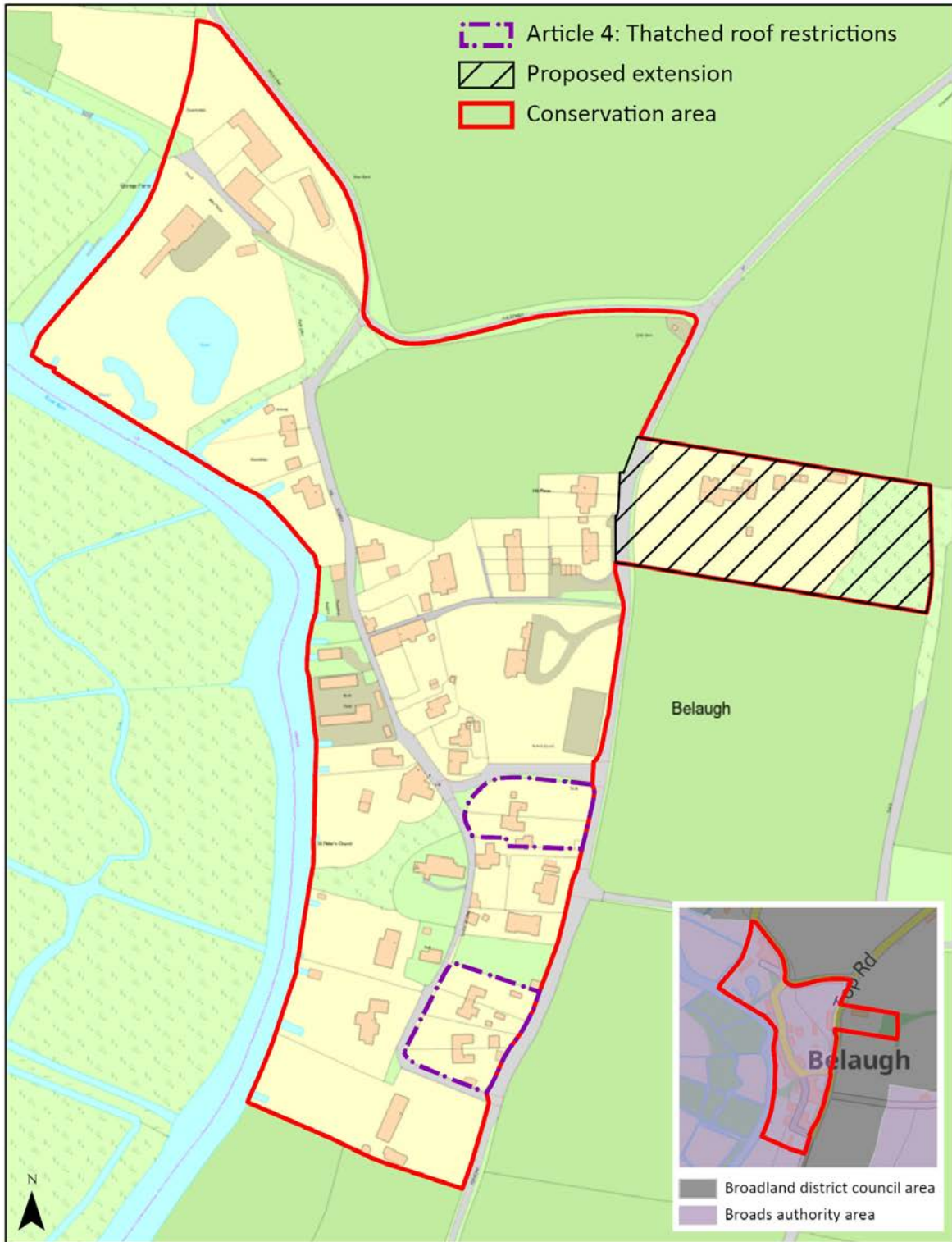
The Article 4 Direction will come into force, subject to confirmation by the Authority, on 1<sup>st</sup> December 2021.



Cally Smith

Head of Planning

Dated 12<sup>th</sup> May 2021.



© Crown copyright and database rights 2021 Ordnance Survey 100021573. You are permitted to use this data solely to enable you to respond to, or interact with, the organisation that provided you with the data. You are not permitted to copy, sub-licence, distribute or sell any of this data to third parties in any form., Contains OS data © Crown Copyright and database right 2020 Contains data from OS Zoomstack