

# Planning Committee

24 May 2024

Agenda item number 11

## Hoveton Neighbourhood Plan – area designation consultation

Report by Planning Policy Officer

---

### Summary

This report introduces the Hoveton Neighbourhood Plan.

### Recommendation

To agree to Hoveton becoming a neighbourhood area to produce a Neighbourhood Plan.

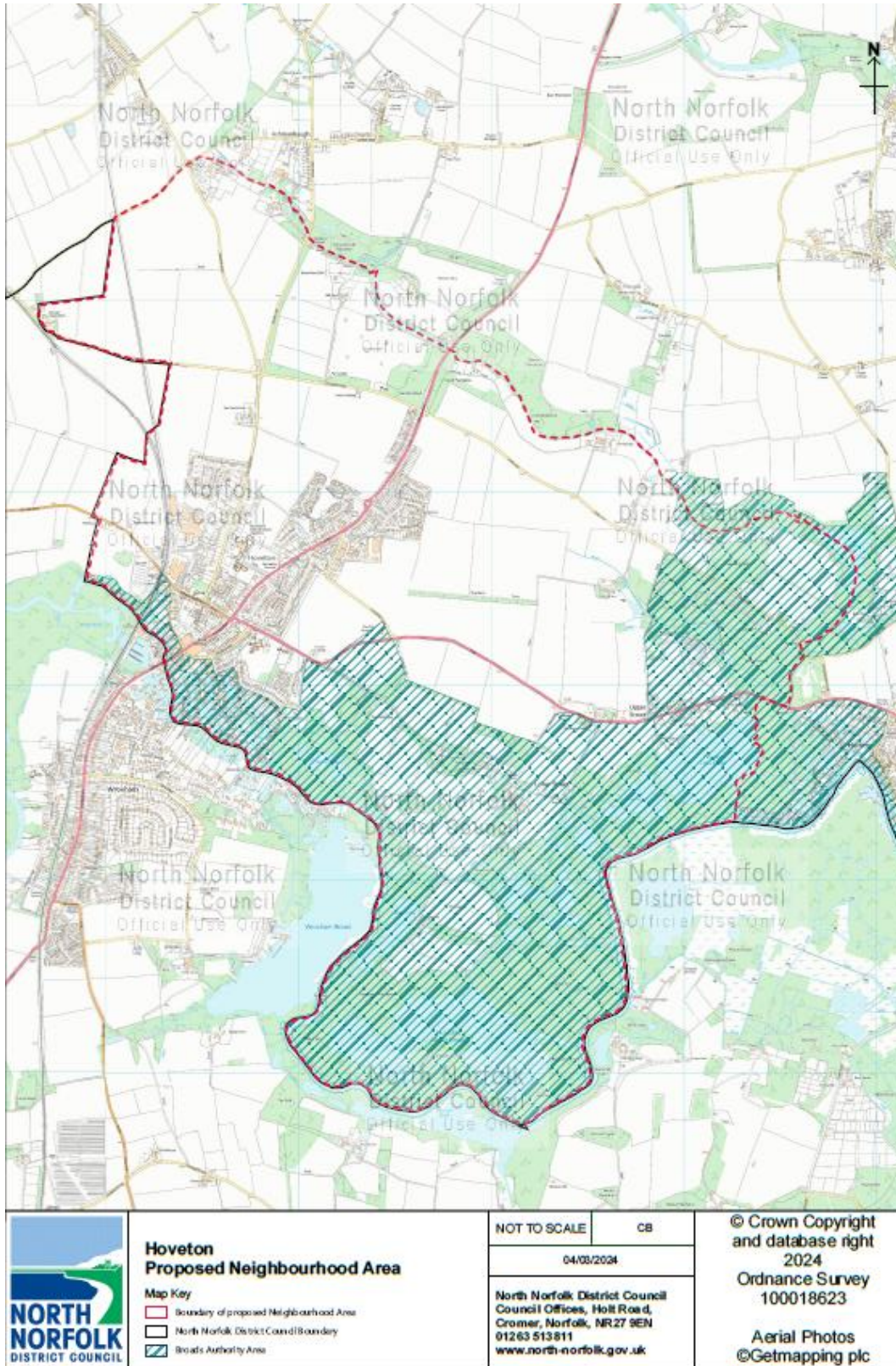
---

## 1. Neighbourhood planning

- 1.1. Neighbourhood planning was introduced through the Localism Act 2011. Legislation then came into effect in April 2012 giving communities the power to agree a Neighbourhood Development Plan, make a Neighbourhood Development Order and make a Community Right to Build Order.
- 1.2. A Neighbourhood Development Plan can establish general planning policies for the development and use of land in a neighbourhood, such as where new homes and offices should be built, and what they should look like.
- 1.3. Under the Neighbourhood Planning (General) Regulations 2012, a parish or town council within the Broads Authority Executive Area undertaking a Neighbourhood Plan is required to apply to the Broads Authority and the relevant District Council to designate the Neighbourhood Area that their proposed plan will cover.
- 1.4. An update to the National Planning Policy Guidance removed the previous requirement to consult on the proposal for six weeks, and it is for the Local Planning Authority to agree an area becoming a Neighbourhood Area in order to produce a Neighbourhood Plan.

## 2. Hoveton Neighbourhood Plan Area

- 2.1. Hoveton Parish Council in North Norfolk has submitted the application for the entire parish to be an area for the purposes of producing a Neighbourhood Plan.



### 3. About Hoveton neighbourhood area application

- 3.1. The nomination was received on 3 May 2024.
- 3.2. There are no known or obvious reasons not to agree the Neighbourhood Area.

### 4. Useful links

[Broads Authority Neighbourhood Planning](#)

[Home | Neighbourhood Planning \(north-norfolk.gov.uk\)](#)

[Royal Town Planning Institute neighbourhood planning guidance](#)

Author: Natalie Beal

Date of report: 10 May 2024