

# Planning Committee

18 August 2023

Agenda item number 12

## Postwick with Wotton Neighbourhood Plan- Area designation consultation

Report by Planning Policy Officer

---

### Summary

This report introduces the Postwick with Wotton Neighbourhood Plan.

### Recommendation

To agree to Postwick with Wotton Neighbourhood Plan becoming a neighbourhood area to produce a Neighbourhood Plan.

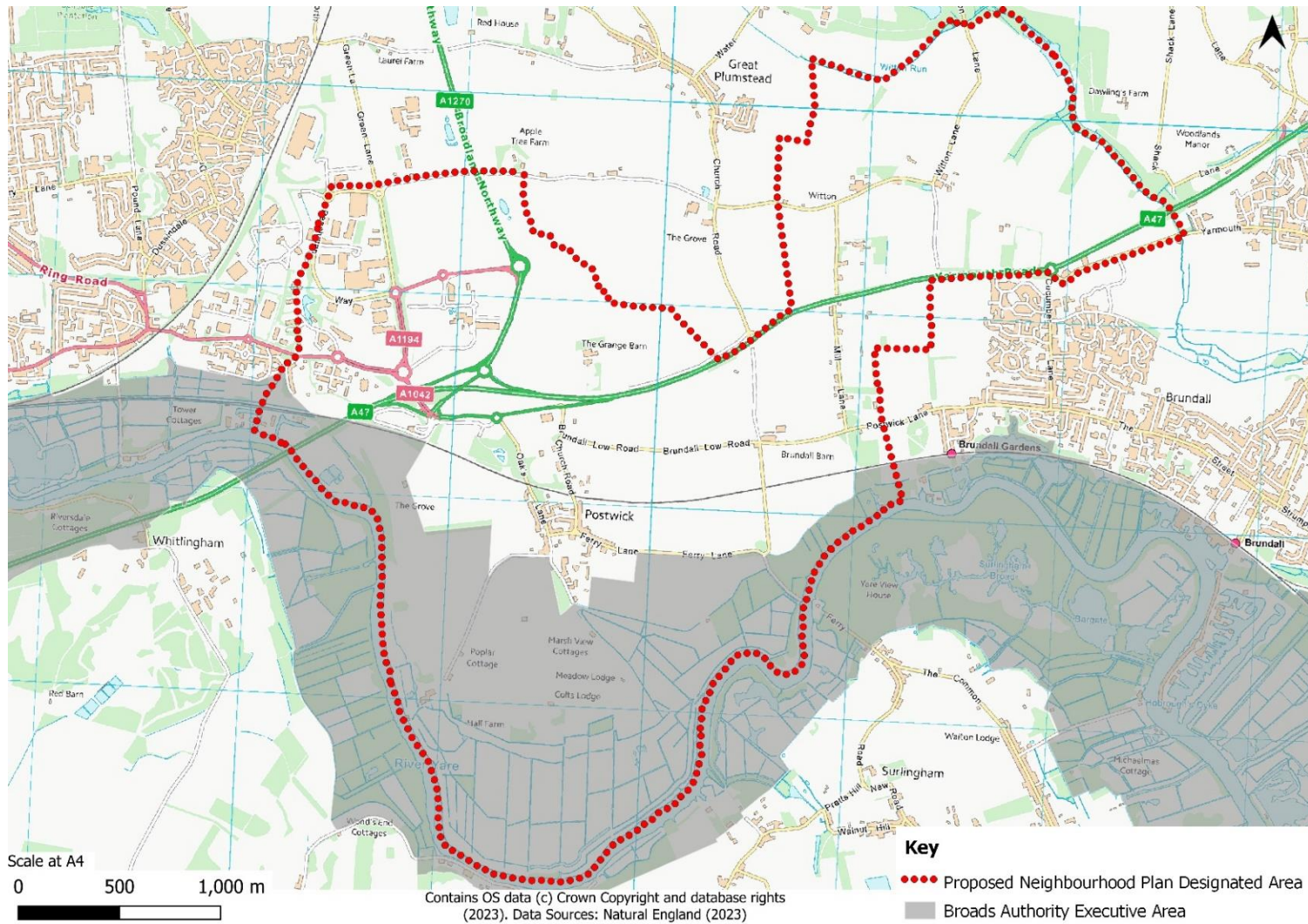
---

## 1. Neighbourhood planning

- 1.1. Neighbourhood planning was introduced through the Localism Act 2011. Legislation then came into effect in April 2012 giving communities the power to agree a Neighbourhood Development Plan, make a Neighbourhood Development Order and make a Community Right to Build Order.
- 1.2. A Neighbourhood Development Plan can establish general planning policies for the development and use of land in a neighbourhood, such as where new homes and offices should be built, and what they should look like.

## 2. Postwick with Witton Parish Council

Postwick with Witton Parish Council in Broadland District Council has submitted the application to become a neighbourhood area.



### 3. About Postwick with Witton neighbourhood area application

- 3.1. The nomination was received on 28 July 2023.
- 3.2. There are no known or obvious reasons not to agree the Neighbourhood Area.

### 4. Useful links

[Broads Authority Neighbourhood Planning](#)

[Neighbourhood Plans – Broadland and South Norfolk  
\(\[southnorfolkandbroadland.gov.uk\]\(https://southnorfolkandbroadland.gov.uk\)\)](#)

[Royal Town Planning Institute neighbourhood planning guidance](#)

Author: Natalie Beal

Date of report: 03 August 2023